

Willow Lake (Survey #: 219003)
M. Cohen, Region 2 Fisheries

05/14/2020

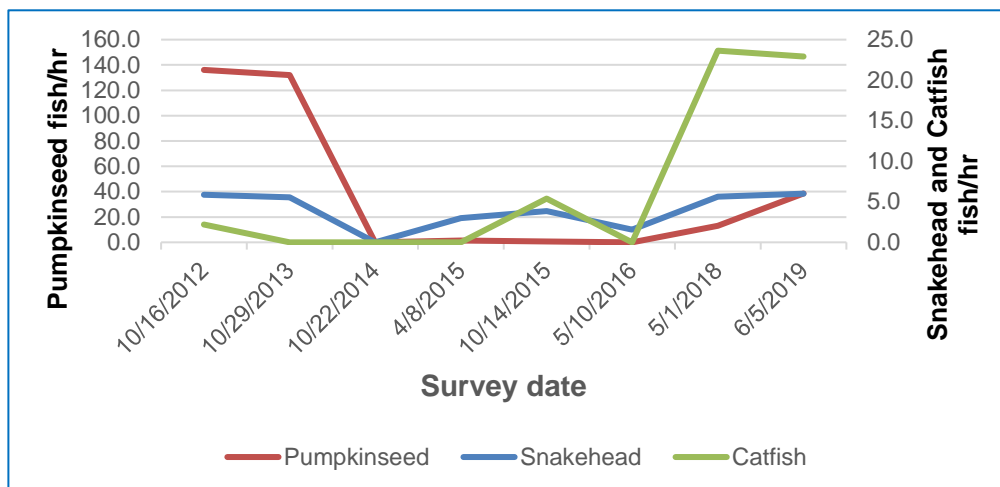
Willow Lake in Flushing Meadows Corona Park, Queens, is 45 acres and adjoins 95-acre Meadow Lake. Region 2 Fisheries has executed annual boat electrofishing surveys of both waters, annually, since capture of three northern snakeheads from Meadow Lake in 2005. Species commonly captured or observed during annual fish surveys have been white perch, common carp, American eel and inland silverside. Pumpkinseed were commonly captured until a 2014 mortality event at both Meadow and Willow Lakes after which no pumpkinseed sunfish were observed or captured in electrofishing surveys until 2018. This survey was executed the evening of June 5, 2019. Water temperature was 74 degrees F and conductivity was 1,406 microS/cm³, relatively low for this water which is remotely connected to saline Flushing Bay.

A total of 122 fish were captured with American eels and common carp observed and counted during each of the three electrofishing runs. White perch and pumpkinseed, together, comprised over 50% of captured fish; other species captured were gizzard shad, brown bullhead, goldfish and northern snakehead (Table 1). Forty-seven American eels and 102 common carp were observed but not collected.

Table 1. Number and catch rates of fish collected from Willow Lake during a June 5, 2019 boat electrofishing survey

Species	# collected	Time (hr)	Catch rate (fish/hr; standard error)				
			All sizes	Age-1	Stock	Quality	Preferred
Gizzard shad	22	0.83	26.5(9.6)	0	26.5(9.6)	25.3(8.8)	N/A
Goldfish	7	0.83	8.4(4.8)	*	*	*	*
Brown bullhead	19	0.83	22.9(11.4)	0	22.9(11.4)	18.1(9.6)	7.2(3.8)
White perch	31	0.83	37.3(7.6)	10(5)	28(3)	14.5(5.7)	7.2(3.6)
Pumpkinseed	32	0.83	38.6(27)	9.6(9)	29(18)	2.4(2.2)	0.0
Northern snakehead	5	0.83	6.0()	*	*	*	*

Figure 1. Catch rates of three Willow Lake fish species from electrofishing surveys, 2012-2019



Northern snakehead CPUE (6 fish/hr) remained similar to that of the 2018 survey (5.45 fish/hr). Brown bullhead CPUE (22.9 fish/hr) was also similar to that in 2018 (23.6 fish/hr), while pumpkinseed CPUE (38.6 fish/hr) was approximately three times higher than in 2018 (12.7 fish/hr), suggesting this species is rebounding after the

2014 mortality event. Staff should continue to look for trends in pumpkinseeds.

