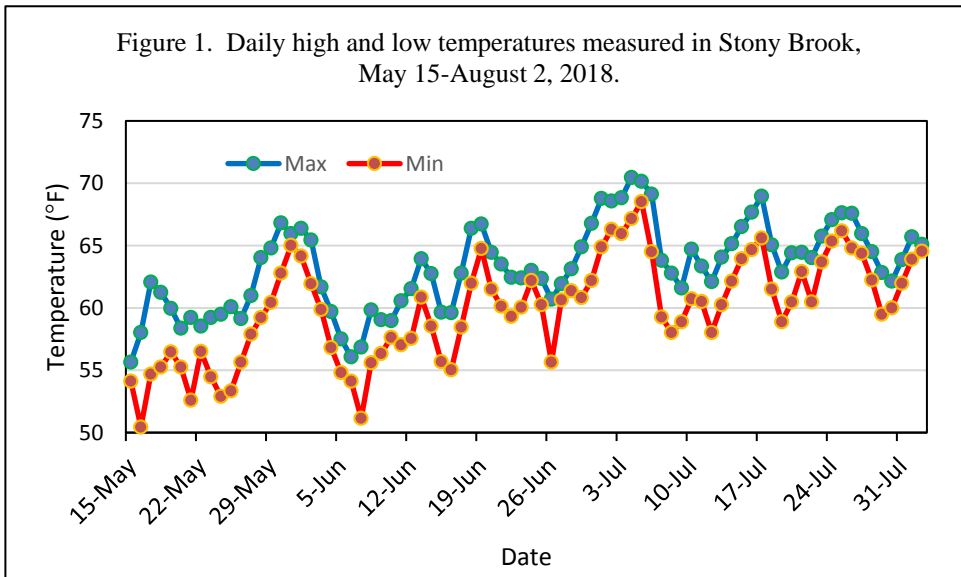


**Stony Brook Trout Population Evaluation #918003**  
 Scott Cornett, Region Nine Fisheries

8/5/18

On June 8, 2018 Region 9 Fisheries Staff conducted a trout stream survey at one site on Stony Brook, a tributary of Quaker Run. The stream is located in Allegany State Park, Cattaraugus County. This stream, under a special regulation covering all waters in Allegany State Park, is managed with a year-round open season, with the period October 16-March 31 limited to catch and release and the use of artificial lures only. In the 1990s DEC surveys (most recent in 1998) found this stream to support a very limited population of wild brown trout with a few wild brook trout also present. An extensive beaver colony in the stream’s headwaters was found to likely be warming the stream and increasing sedimentation. Recent information that beaver were no longer using the stream’s headwaters gave us some hope that the stream’s trout population might be improving after 20 years. With the exception of the headwater beaver meadows, the remainder of Stony Brook’s watershed is heavily forested in hemlock and hardwood forest and much of the stream contains very good adult trout habitat consisting of large boulders and large woody debris. Surveys in the late 1940s had found the stream to contain a fairly abundant population of wild brook trout and wild rainbow trout. We have an automated thermometer installed in the stream at our sampling site to evaluate whether water temperatures may be a limiting factor for the trout population.

Figure 1. Daily high and low temperatures measured in Stony Brook, May 15-August 2, 2018.



Our survey site was located approximately 0.3 miles above the stream’s mouth and was 1,130 feet in length, with a 15-foot average width. We collected five yearling and older (adult) wild brown trout, one adult wild brook trout and one stocked brown trout that had moved upstream from Quaker Run. Brown trout captured ranged in length from 8.3 to 15.8 inches and the brook trout was

9.1 inches. No young-of-year trout were found in this survey. Other fish species collected were blacknose dace, mottled sculpin and creek chub. The very low abundance of wild trout found in over 1,000 feet of high quality habitat indicates that the factors which have been limiting this stream’s trout population for the past 30 years are still negatively affecting it. Sedimentation from an adjacent horse trail may be having negative effects on trout reproduction. Through early August, daily high temperatures have mainly ranged from the low to mid-60s (F), with one period in early July where temperatures reached 70F (Figure 1). It does not appear that these



temperatures would be limiting for wild brook trout and especially not for wild brown trout, thus other factors appear to be limiting the trout population in Stony Brook. Based on our sampling in 2018, no changes in regulations or wild trout management are recommended for Stony Brook. We will continue to work with Allegany State Park staff to identify and mitigate the factors limiting trout abundance in this stream.