

ALB POOL SURVEY

Monitoring Your Pool for the Asian Longhorned Beetle



Department of
Environmental
Conservation

Introduction. The Asian longhorned beetle (ALB) is an invasive insect from Asia that has killed thousands of trees in the United States. To stop its spread, we need as many people as possible looking for the beetle, and the common signs of tree damage that it causes. To date, all ALB infestations in the U.S. have been discovered by residents. You are the key to keeping forests free of ALB! Thank you for protecting New York's forests by participating in the ALB Pool Survey.

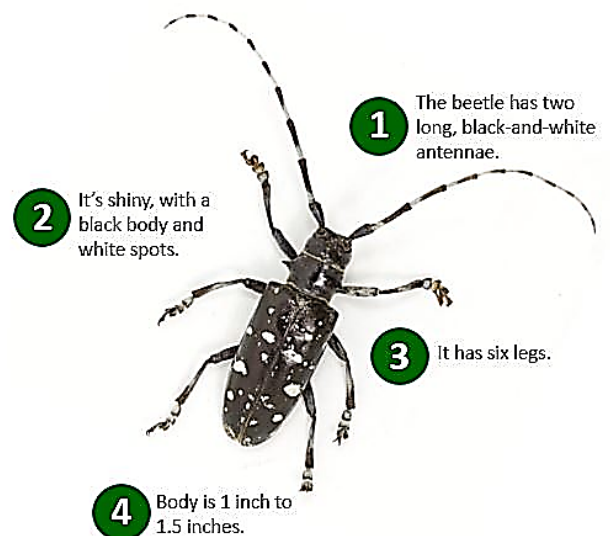
How to check your pool for ALB

- **Inspect your filter.** From late July until you close your pool, look at the debris you collect in your pool filter or skimmer.
- **Look for ALB.** ALB is in the family Cerambycidae, the longhorned beetles. Use the visual aids below to help you know what to look for.
- **Take a photo.** Photograph any insect you think might be ALB. We need a good view of the insect's back, as shown to the right.
- **Send the photo to DEC.** There are three ways to send photos. *Please include your name and address.*
 - **Email.** Send an email to foresthealth@dec.ny.gov with the subject heading "ALB Pool Survey".
 - **Text.** Text an image to (518) 810-1609, and type "ALB Pool Survey" in the body of the text.
 - **Mail.** Send a printed image to the Forest Health Diagnostic Lab at 108 Game Farm Rd., Delmar, NY 12054.
- **Save the insect.** Freeze the insect in a plastic bag or container until you hear back from us.



Identifying ALB

- **Description.** ALB is large, ranging from $\frac{3}{4}$ " to $1\frac{1}{4}$ " long, with very long, black and white antennae. The body is glossy with irregular white spots.
- **Hosts.** ALB feeds on many species of hardwood trees, including maple, birch, ash, willow and sycamore.
- **Activity.** In New York, adults are typically seen from late July through fall, depending on the weather.



Common ALB Look-alikes

These insects are common in New York and are **NOT** the Asian longhorned beetle.

White-spotted pine sawyer

- **Description.** $\frac{3}{4}$ " – 1" long. Dull or bronzy-black, may be mottled with white patches. Long, faintly banded antennae. White scutellum, triangle patch at the top of the wing cases (indicated by arrow), same area is always black on ALB.



Northeastern sawyer

- **Description.** $\frac{3}{4}$ " – 1 $\frac{1}{4}$ " long. Mottled, light brown/white. No distinct spots.



Broad-necked root borer

- **Description.** Black with no white markings. Solid black antennae.

Eyed click beetle

- **Description.** Black with white speckles. Black "eye spots".



PHOTO CREDITS
Steve Katovich, USDA
Forest Service,
Bugwood.org; R. Routledge,
Sault College,
Bugwood.org; Jon
Yuschock, Bugwood.org;
Gerald J. Lenhard,
Louisiana State University,
Bugwood.org

CONTACT INFORMATION

Jessica Cancelliere

Division of Lands & Forests, Forest Health Diagnostic Lab

New York State Department of Environmental Conservation

108 Game Farm Rd. Delmar, NY 12054

P: (518) 478-7813 | jessica.cancelliere@dec.ny.gov

www.dec.ny.gov

Updated November 13, 2018



Department of
Environmental
Conservation



This institution is an equal opportunity provider.