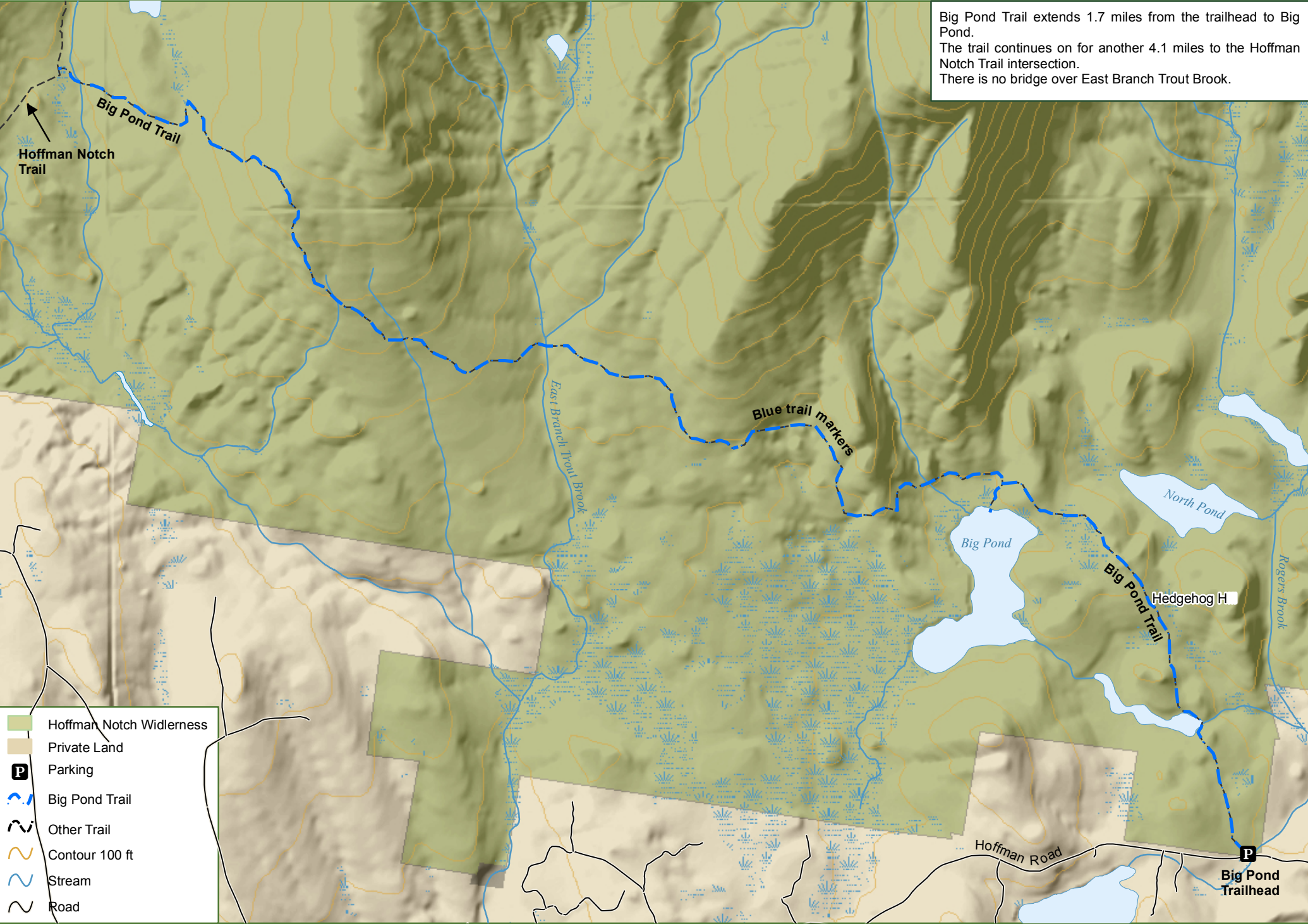


Hoffman Notch Wilderness - Big Pond Trail

Big Pond Trail extends 1.7 miles from the trailhead to Big Pond.  
The trail continues on for another 4.1 miles to the Hoffman Notch Trail intersection.  
There is no bridge over East Branch Trout Brook.



- Hoffman Notch Wilderness
- Private Land
- Parking
- Big Pond Trail
- Other Trail
- Contour 100 ft
- Stream
- Road