

Rusk Mountain Wild Forest

Hunter

Haines Falls

Tannersville

Devil's Tombstone Campground

Hunter-West Kill Wilderness

Phoenicia Wild Forest

Indian Head Wilderness

Kaaterskill Wild Forest

Phoenicia

Phoenicia Wild Forest

Overlook Mountain Wild Forest

Woodstock

Catskill Interpretive Center

Kenneth L. Wilson Campground

Boiceville

Shokan

West Shokan

Bluestone Wild Forest

Sundown Wild Forest

Olivebridge

Onteora Lake

Ashokan Reservoir

Mombaccus Mt

North Dome

Evergreen Mt

Rusk Mt

Colonels Chair

John Robb

Diamond Notch

South West Hunter

Plateau Mt

Spruce Top

Roundtop Mt

High Peak (Kaaterskill)

Olderbark Mt

Mink Hollow

Sugarloaf Mt (Mink)

Twin Mt

Indian Head Mt

Devils Kitchen

Plattekill Mt

Overlook Mt

Tremper Mt

Willow

Cooper Lake

Mt. Tobias

Mount Pleasant

Terrace Mountain

Samuels Point

Wittenberg

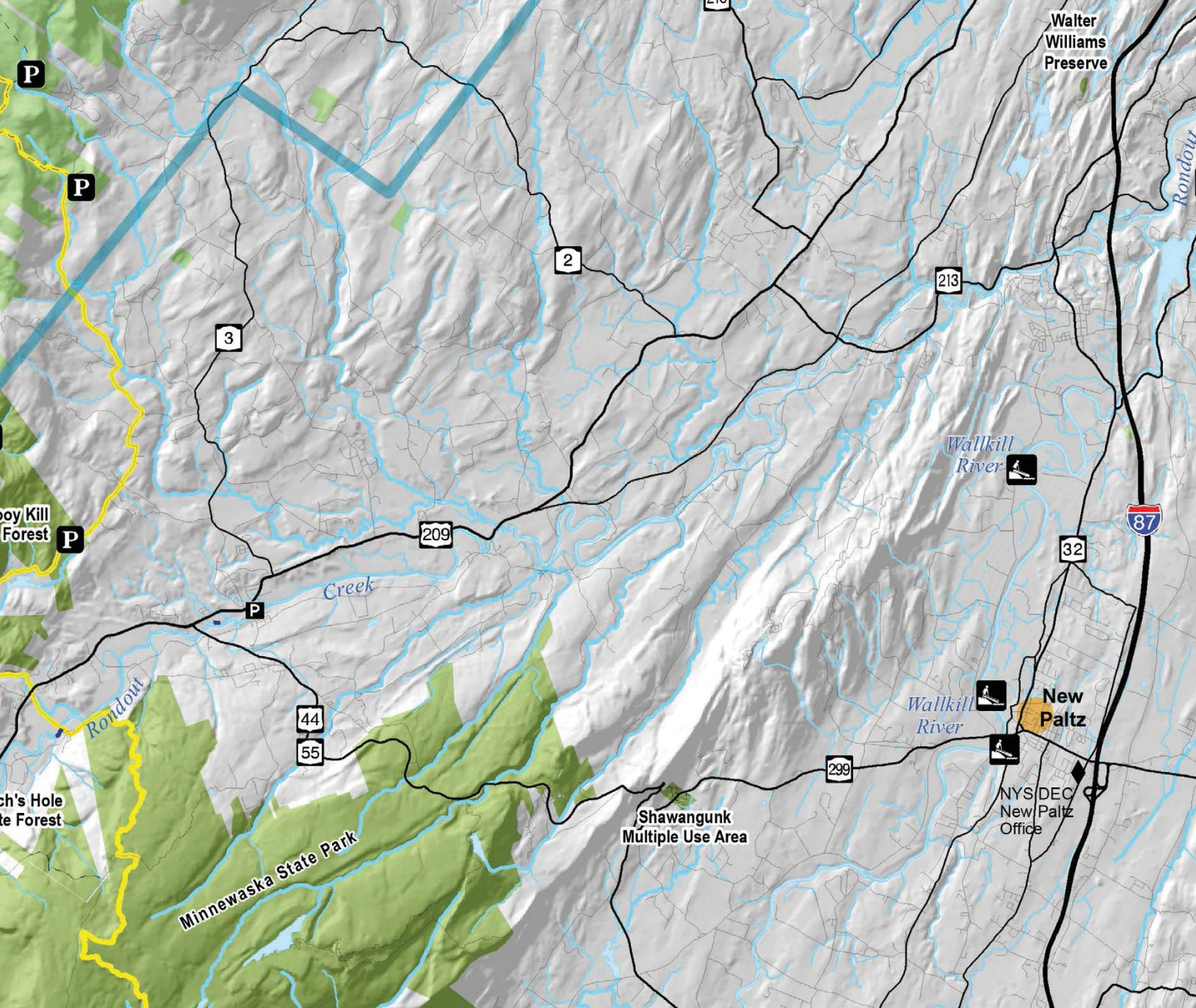
Tonshi Mt

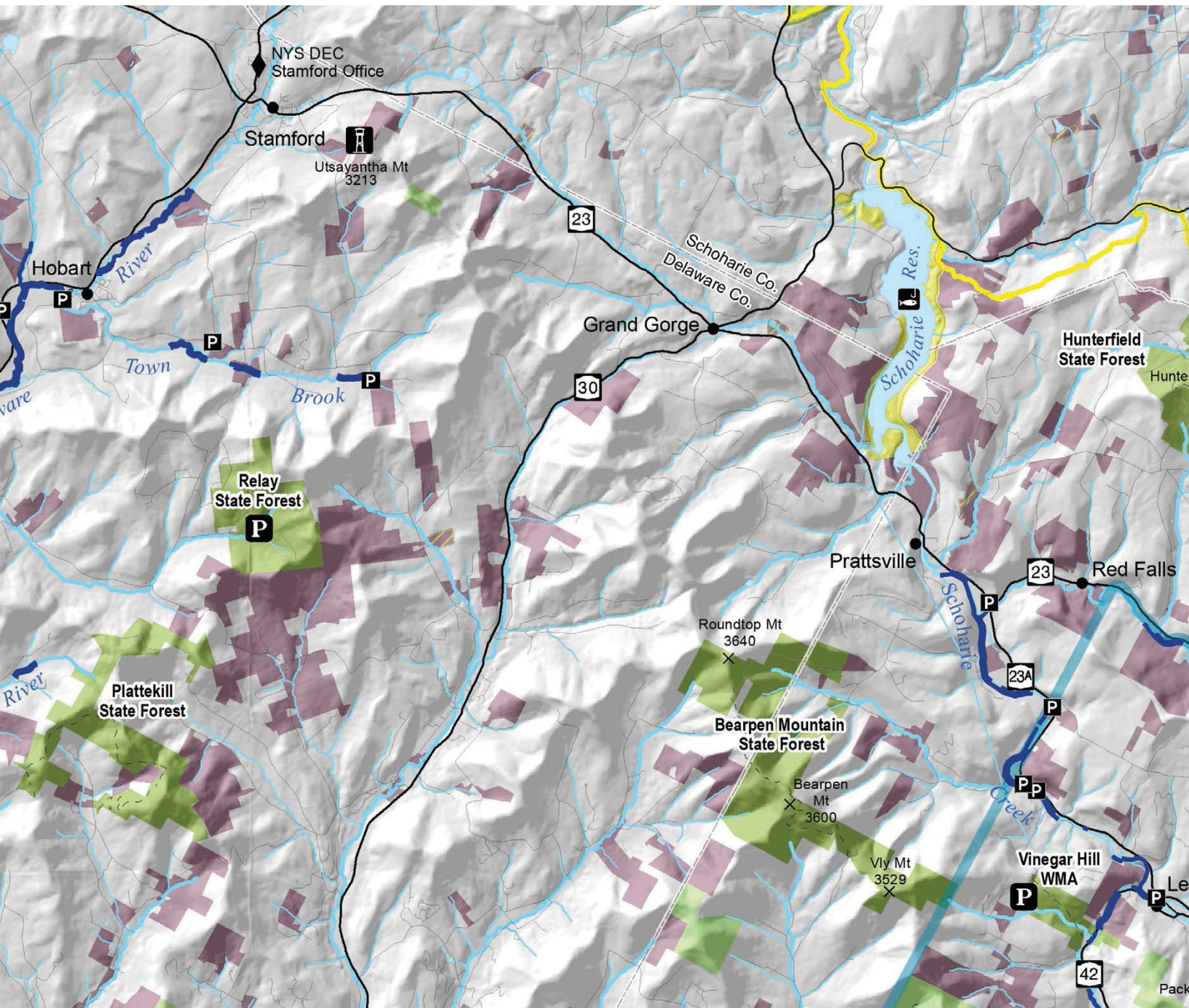
Ticetonyk Mt

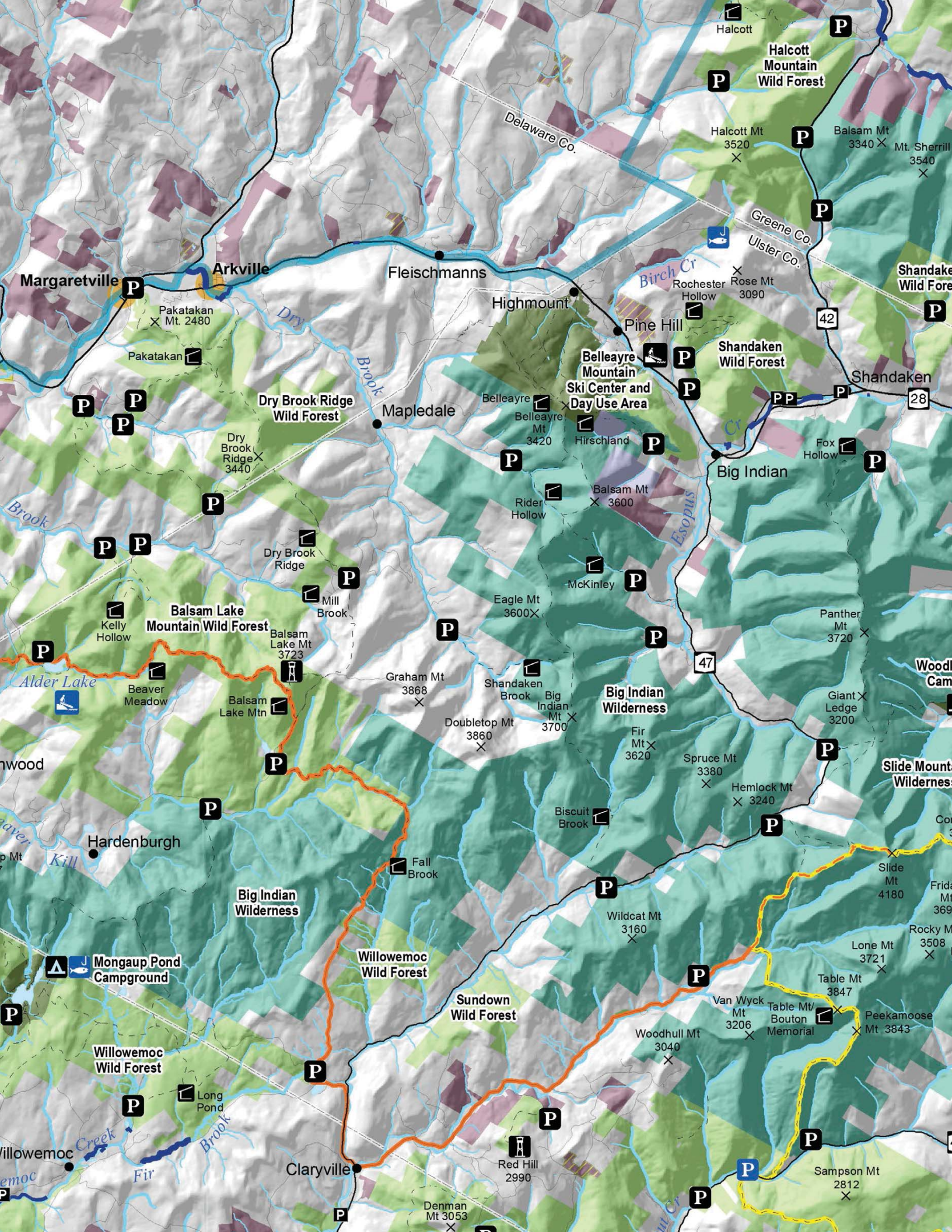
Hanover Mt

Ashokan High Point

Esopus







Margaretville

Arkville

Fleischmanns

Highmount

Pine Hill

Shandaken Wild Forest

Shandaken

Mapledale

Belleayre Mountain Ski Center and Day Use Area

Big Indian

Balsam Lake Mountain Wild Forest

Big Indian Wilderness

Hardenburgh

Big Indian Wilderness

Willowemoc Wild Forest

Sundown Wild Forest

Willowemoc Wild Forest

Claryville

Red Hill

Sampson Mt

Halcott Mountain Wild Forest

Pakatakan

Dry Brook Ridge Wild Forest

Belleayre

Hirschland

Halcott Mt 3520

Balsam Mt 3340

Mt. Sherrill 3540

Kelly Hollow

Dry Brook Ridge

Eagle Mt 3600

Balsam Mt 3600

Panther Mt 3720

Balsam Lake Mtn

Graham Mt 3868

Shandaken Brook

Big Indian Mt 3700

Giant Ledge 3200

Beaver Meadow

Fall Brook

Biscuit Brook

Spruce Mt 3380

Hemlock Mt 3240

Slide Mountain Wilderness

Mongaup Pond Campground

Willowemoc Wild Forest

Wildcat Mt 3160

Van Wyck Mt 3206

Table Mt 3847

Rocky Mt 3508

Willowemoc Wild Forest

Long Pond

Woodhull Mt 3040

Table Mt/Bouton Memorial

Peekamoose Mt 3843

Slide Mt 4180

Friday Mt 3690

Lone Mt 3721

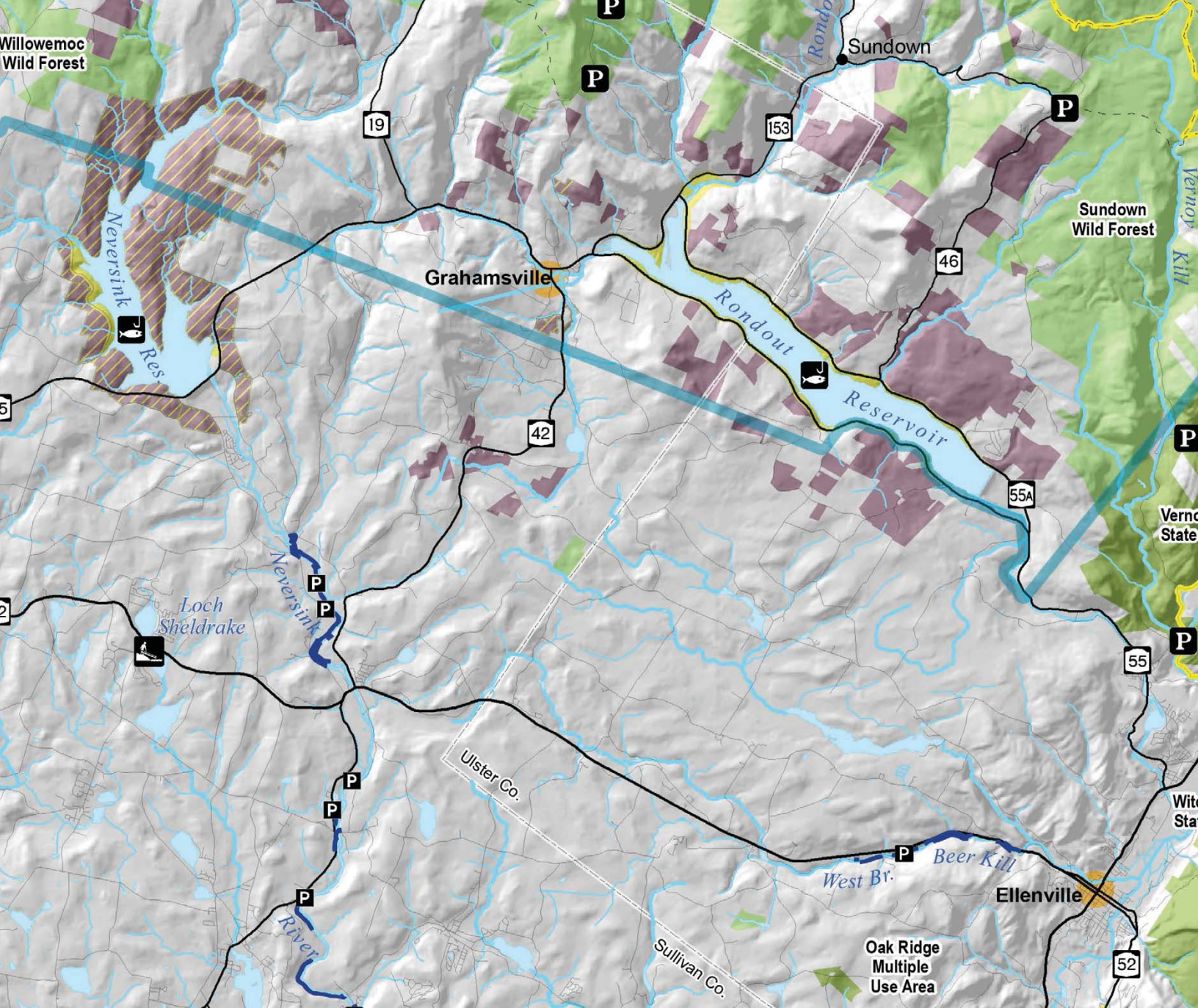
Table Mt 3847

Peekamoose Mt 3843

Denman Mt 3053

Red Hill 2990

Sampson Mt 2812



VIEW THE PARK

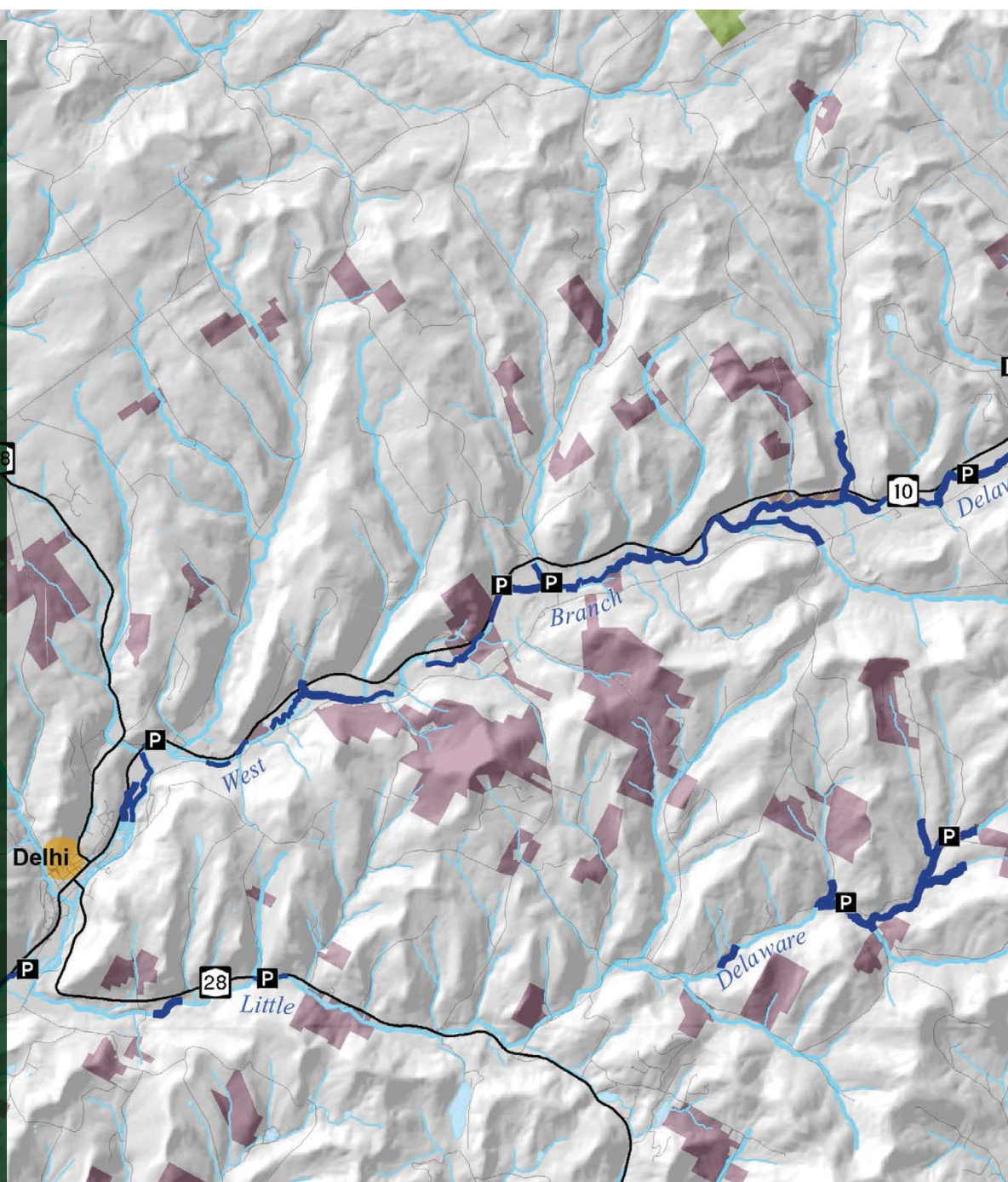
Preserve and the Catskill
t. The Catskill Park is
by the “blue line,” a
The Preserve is state-
wild” within the park.

Exceptional places for solitude
bicycles are not allowed.

of recreation, including
mountain biking. Some areas

campgrounds and day-
swimming, fishing and

NYS Forest Preserve and NYC-
and-use map. The information on
possible. However, DEC does not
se. Detailed information about
at DEC or NYC Department
www.nyc.gov or www.nyc.gov/dep
particular caution is advised where a
consult with the local DEC or DEP





Andes

Wolf Hollow
WMA

Murphy Hill
State Forest

Downsville

Pepacton
Reservoir

Delaware
Wild Forest

Barkaboom Mt
3100

Brock
Mt
2860

Mary
Smith Hill
2767

Middle
Mt
2975

Campbell
Mt
2353

Delaware
Wild Forest

Delaware
Wild Forest

Little Pond
Campground

Trout
Pond

Mud
Pond

Pelnor
Hollow

Lewbeach

Ulster Co.

Sullivan Co.

Butternut Grove

Roscoe

Catskill Fly Fishing
Center & Museum

Beaverkill
Campground

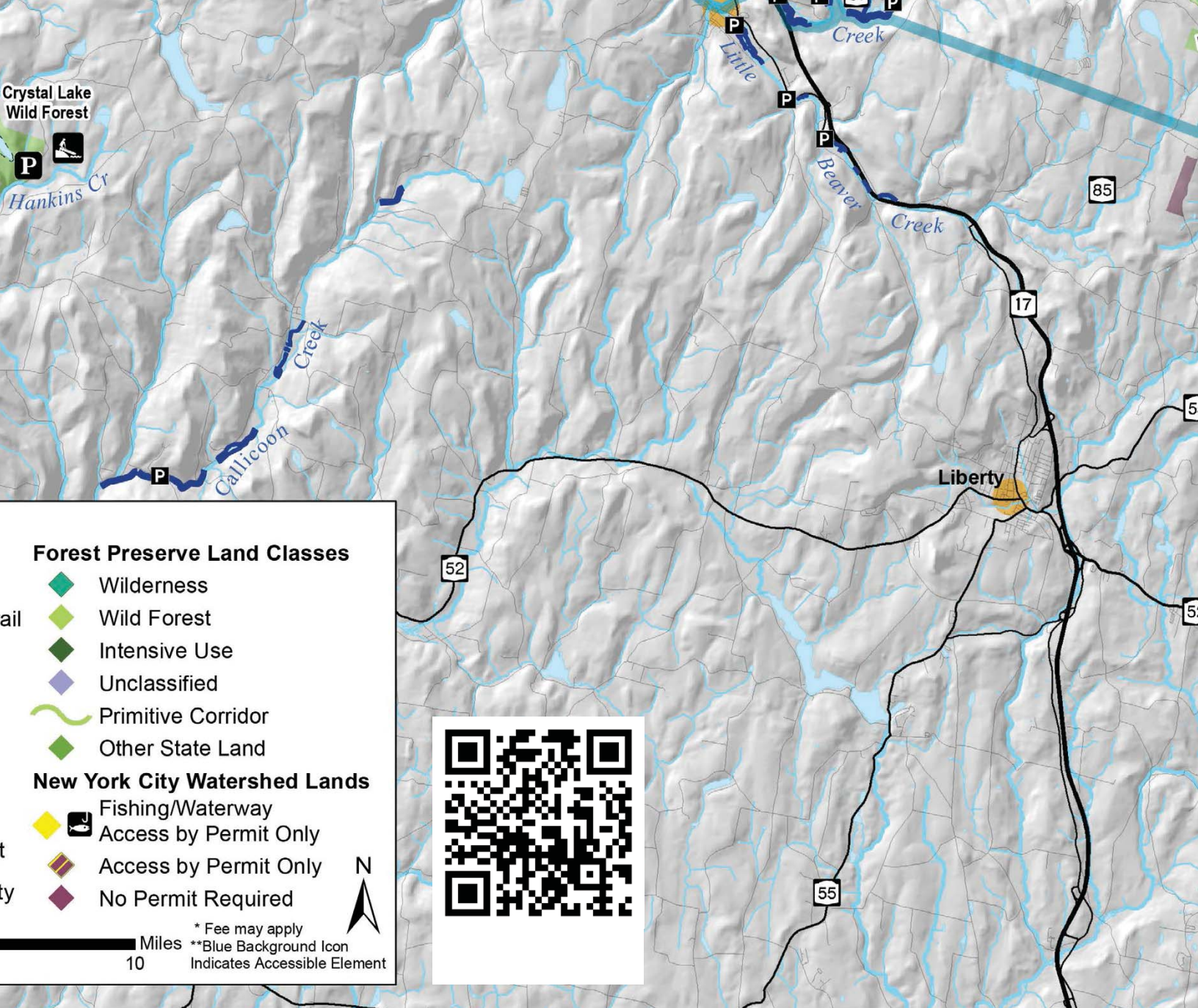
Waneta
Lake

Quick
Lake

DeBruce
Environmental
Education Camp

Livingston Manor

DeBruce



Forest Preserve Land Classes

- ◆ Wilderness
- ◆ Wild Forest
- ◆ Intensive Use
- ◆ Unclassified
- ~ Primitive Corridor
- ◆ Other State Land

New York City Watershed Lands

- ◆ Fishing/Waterway
- ◆ Access by Permit Only
- ◆ Access by Permit Only
- ◆ No Permit Required



Miles 10
 * Fee may apply
 **Blue Background Icon Indicates Accessible Element





THE PRESERVE *WITHIN*

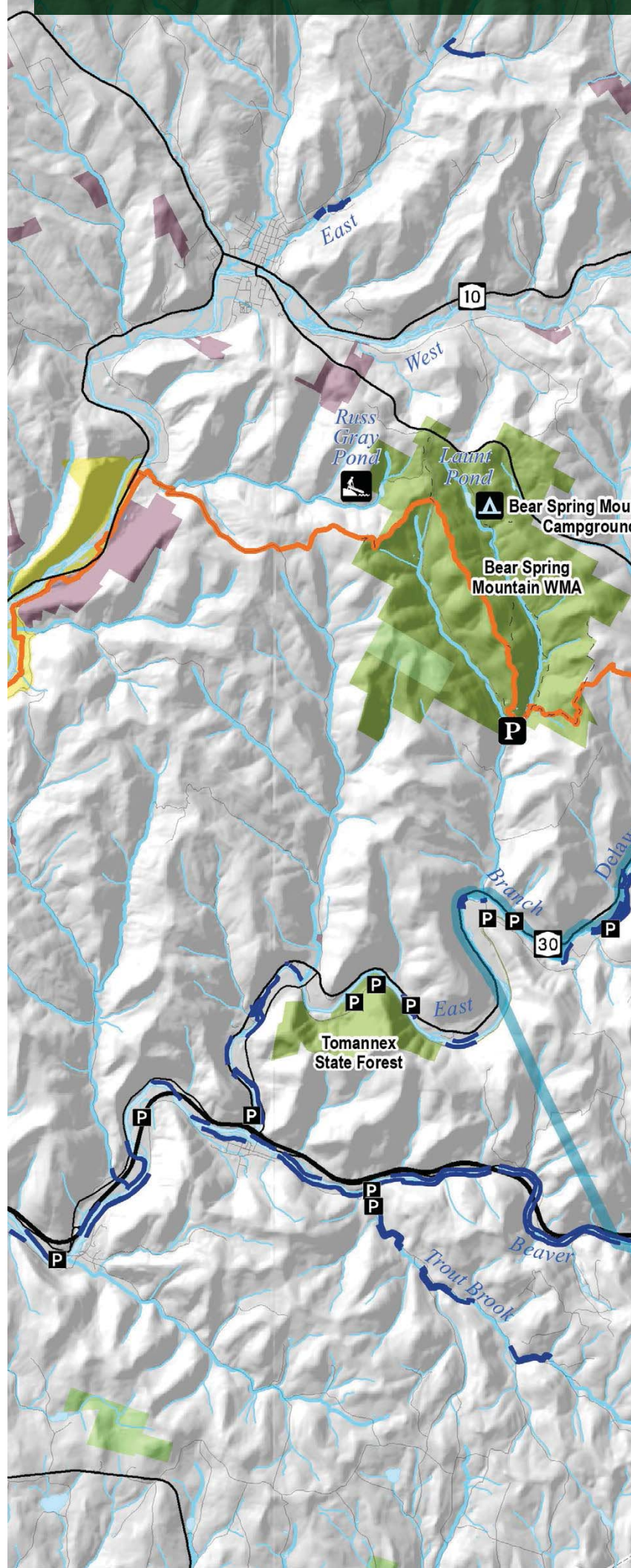
Many people think the Catskill Forest Preserve and Catskill Park are the same thing, but they are not. The Preserve is a mix of public and private land, defined by the boundary the state established in 1904. It includes NYC-owned land that is protected as “forever wild.”

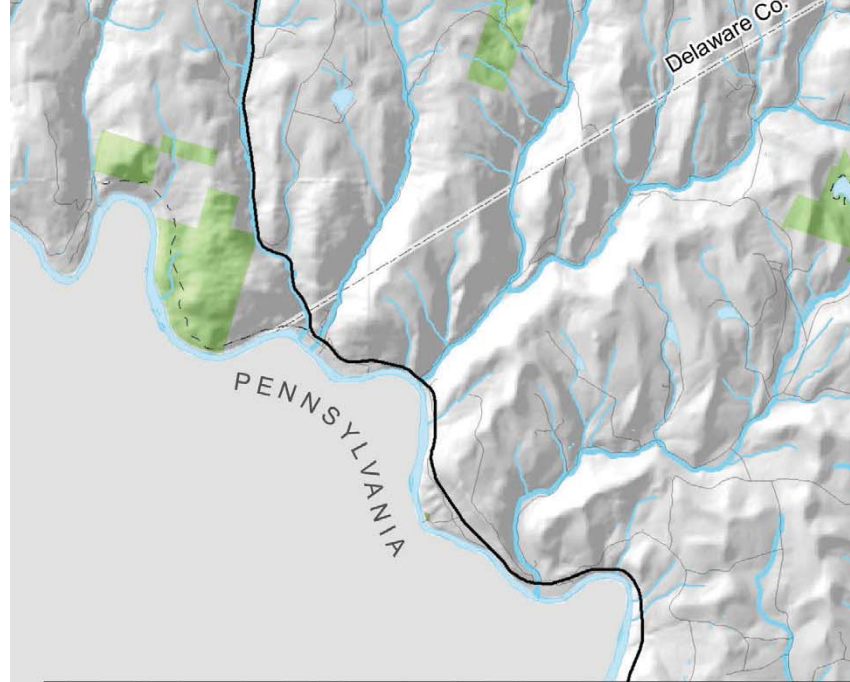
PRESERVE LANDS INCLUDE:

- **Wilderness – About 143,000 acres**
These areas, accessible by foot only, offer exceptional solitude in remote forest settings. Motor vehicles and bicycles are prohibited.
- **Wild Forest – About 130,000 acres**
These areas provide settings for a wide range of recreational activities including hiking, camping, cross-country skiing and mountaineering. Some also have snowmobile and horse trails.
- **State Recreation Areas – About 6,000 acres**
These include Belleayre Mountain Ski Center, and several other areas. All offer picnicking, and some offer car-top boat launches.

NOTICE:

This map is intended as an overview of places for recreation on NYC-owned lands within and near the Catskill Park. It is not a trail or land ownership map. It has been compiled from many sources and verified wherever possible. We do not guarantee its accuracy and is not liable for its use for any purpose. A detailed map of specific NYS Forest Preserve and NYC-owned lands is available from the New York State Department of Environmental Protection (DEP) offices and online at www.dec.ny.gov and www.nyc.gov respectively. Trail conditions and land ownership may change. Please do not use a trail that crosses private land. Always check with the landowner and the appropriate agency office prior to using any trail which crosses private land.





	Accessible Opportunity**		Trail
	Fishing Opportunity		Finger Lakes Trail
	Waterway Access Site* (Car Top)		NYNJ Long Path Tr
	Environmental Education Camp*		Parking Area
	DEC Campground and Day Use Area*		Lean-to
	DEC Campground with Waterway Access*		Firetower
	Visitor Information*		Waterfall
			Angler Parking
			Public Fishing Right
			Gateway Communit

