

ADVENTURE NEW YORK
MAP & GUIDE
PARK CATSKILL

CONNECT WITH US
www.dec.ny.gov/outdoor

Department of Environmental Conservation

BOATING AND WATER RECREATION IN THE CATSKILLS

The Catskills offer water recreation of all kinds, including tubing, swimming and boating. Many DEC campgrounds and fishing spots have launch sites for small boats. Some of the most popular DEC launch sites are listed by county below. For New York City reservoir boating information, see "Water for the Big Apple" in this brochure.

WATERBODY	LOCATION	TYPE	PARKING	FEE	SWIMMING	CONTACT	NOTES
LAUNT POND	Bear Spring Mountain Campground	Hand launch, No motors.	5 spaces	Day-use fee in season.	Yes	607-865-6989	Open when campground is open.
RUSS GRAY POND	Bear Spring Mountain Wildlife Management Area	Beach launch, Electric motors only.	4 spaces	No fee.	No	607-865-6989	Year-round access as conditions allow.
LITTLE POND	Little Pond Campground	Hand surface ramp, No motors allowed.	20 spaces	Day-use fee in season.	Yes	845-439-5480	Open when campground is open.
BIG POND	Delaware Wild Forest	Electric motors only.	6 spaces	No fee.	No	607-652-7366	Year-round access as conditions allow.
GREENE COUNTY	Cogate Lake Wild Forest	Hand launch.	20 spaces, 2 accessible	No fee.	No	607-652-7366	Year-round access as conditions allow.
ALDER LAKE	Balsam Lake Mountain Wild Forest, Turnwood	Hand launch, Electric motors only.	10 spaces	No fee.	No	845-256-3076	Year-round access as conditions allow.
ONTEORA LAKE	Bluestone Wild Forest (Just east of Kingston)	Hand launch, Electric motors only.	10 spaces, 2 accessible	No fee.	No	845-256-3076	Year-round access as conditions allow.
UPPER POND	Kenneth L. Wilson Campground	Hand launch, No motors allowed.	50 spaces	Day-use fee in season.	No	845-679-7020	Year-round access as conditions allow.
FINE HILL LAKE	Belleayre Mountain Day-use Area	Hand launch, No motors allowed.	50 spaces	Day-use fee in season.	Yes	845-254-5600	Open when day-use area is open.

DISCOVERING NEW YORK'S NATURE IN THE CATSKILL PARK

Reaction and tourism exist side by side with the traditional masters of the Catskill economy: timber harvesting, farming and mining. Just as the mountains offer a breathtaking view, the park's villages offer excellent accommodations, dining and a variety of cultural experiences. From BBQs to campgrounds, you'll find an ideal base for discovering New York's nature in any season.

Relax at pond beaches to cool off. Park offers many great places to enjoy. From early mornings to late evenings, all game hunting for NY-licensed hunters.

Stay at one of eight New York State campgrounds, or try primitive camping in a tent or lean-to in the state forest.

From sandy beaches to primitive camping, all game hunting for NY-licensed hunters.

The park is a patchwork of public and private land. Nearly 300,000 acres comprise the state forest preserve. New York City owns more than 40,000 acres within the park to produce clean water for the city.

Thousands of year-round residents.

In 1894, New York State began setting aside land in the Catskills to be kept forever as Wild Forest. In 1904, the state established a boundary around 705,500 mountainous acres (Green, Delaware, Sullivan and Ulster counties), and the Catskill Park was born.

WATCHABLE WILDLIFE

Whether vacationing in the mountains or just traveling through, you'll encounter some of the wild creatures that make your Catskills excursion a thrilling adventure. From the *New York Wildlife Viewing Guide*, here are four of the most popular places in the Catskill Park for watching wildlife:



SLIDE MOUNTAIN WILDERNESS
Extensive foot trails ascend to spectacular views deep within this largest and most popular wilderness in the Catskills. Heavily forested, Slide Mountain supports a tremendous diversity of wildlife. The trees ring with birdsong. The woods sustain a thriving bear population. Deer, turkey, beaver, fisher and coyote are found here as well.

CONTACT:
Region 3 Forester
845-256-3083
www.dec.ny.gov/lands/9150.html



NORTH-SOUTH LAKE PUBLIC CAMPGROUND
Deer and bear share the woods with red squirrels at this largest campground in the Catskills, which is also open for day use. Birders will find turkey, ruffed grouse, hawks, owls and a variety of songbirds. Geese and mallards are common sights on the lake. You can fish for bass while the kids catch panfish or discover frogs and turtles near the bank.

CONTACT:
518-589-5058
County Route 18
Haines Falls, NY 12436
www.dec.ny.gov/outdoor/24487.html



BALD EAGLES IN THE CATSKILL PARK
This iconic bird, no longer on the Endangered Species List, now ranges over a wide area in the Catskills. A chance to see our majestic national bird in the wild is not to be missed. Less frequently, you'll spy a fox or bear. The New York City Water Supply Reservoirs: Ashokan Neversink, Pepacton and Rondout (with its special eagle-viewing site), and the Delaware River system, including the Beaverkill and the Neversink River.

CONTACT:
845-439-5480
549 Little Pond State Campground Road
Andes, NY 13731
www.dec.ny.gov/outdoor/24478.html



LITTLE POND PUBLIC CAMPGROUND
As you climb the trail to Touchnet Mountain for a breathtaking view, look for bald eagles, turkey, or dozens of other forest birds. Deer and red squirrels are commonly seen. Less frequently, you'll spy a fox or bear. The campground is also open for day use, but camping overnight might just allow you to surprise raccoons noisily scrounging for a meal.

CONTACT:
845-439-5480
549 Little Pond State Campground Road
Andes, NY 13731
www.dec.ny.gov/outdoor/24478.html

FISHING THE CATSKILLS



The Catskills are famous for trout fishing. Both fly and bait anglers find streams with great spots for catching their limit of brown, rainbow and brook trout.

Here are four of the best:

ESOPUS CREEK
The Esopus is one of the most popular trout streams in the Catskills, offering excellent fishing for wild browns and rainbows. The headwaters hold wild brookies.

WILLOMOC CREEK
Wild brown trout are found throughout the Willomoc. In summer, more are landed upstream, where the water stays cooler.

BEAVERKILL
Birthplace of American fly fishing, the Beaverkill is divided into upper and lower sections, both with wild browns and rainbows. Find wild brookies in the upper section.

EAST BRANCH DELAWARE RIVER
Below the Pepacton Reservoir, wild browns, rainbows and some brookies are found. Above the reservoir, browns are plentiful.

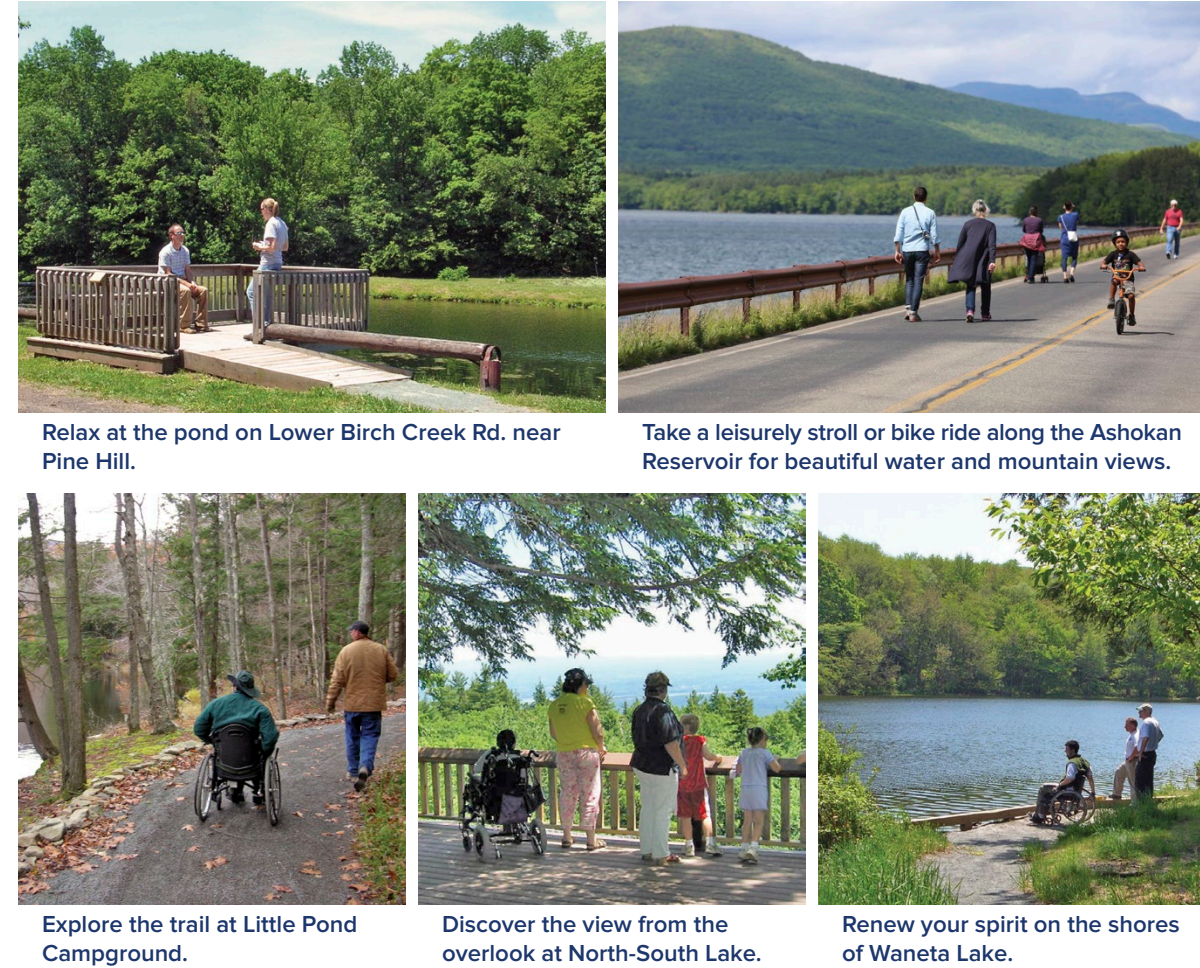
See www.dec.ny.gov/outdoor/9924.html for more fishing spot information and maps.

ACCESSIBLE ADVENTURES

Seeking a leisurely, family-friendly way to enjoy the natural beauty and tranquility of the Catskill Park? Many areas are wheelchair accessible and contain a full range of features that welcome people of all ages and abilities.

The shore of Ontario Lake, near Kingston, is the perfect place for a family picnic and includes a fishing platform and canoe launch. Or visit the quiet pond on Lower Birch Creek Rd., which has a wheelchair-accessible path around the pond to picnic tables.

You will find campsites with accessible features in secluded areas as well as at our campgrounds.



THE CATSKILL PARK TRULY HAS SOMETHING FOR EVERYONE.
Call DEC's Regional Access Coordinators or the Universal Access Program in Albany at 518-402-9428 for trip-planning information.
www.dec.ny.gov/outdoor/34035.html

WATER FOR THE BIG APPLE...

Providing Great Places for Recreation



New York City gets nearly 90 percent of its drinking water from the Ashokan, Rondout, Cannonsville, Schoharie, Pepacton and Neversink reservoirs in the Catskill region. To protect that water, the city owns more than 125,000 acres of land around those waterbodies, including more than 40,000 acres in the Catskill Park.

HIKING, FISHING, HUNTING AND TRAPPING

Many city-owned lands that adjoin state preserve lands in the Catskills are open for hiking, fishing, hunting and trapping and do not require a New York City Department of Environmental Protection (NYCDEP) Access Permit. However, some city-owned lands, especially those close to the reservoirs, do require the free permit.

FISHING AND BOATING

All six reservoirs are open to fishing by permit. Fishing from a rowboat requires an access permit and boat tag, both of which are free. Anglers must have boats steam-cleaned and store them at a designated storage area.

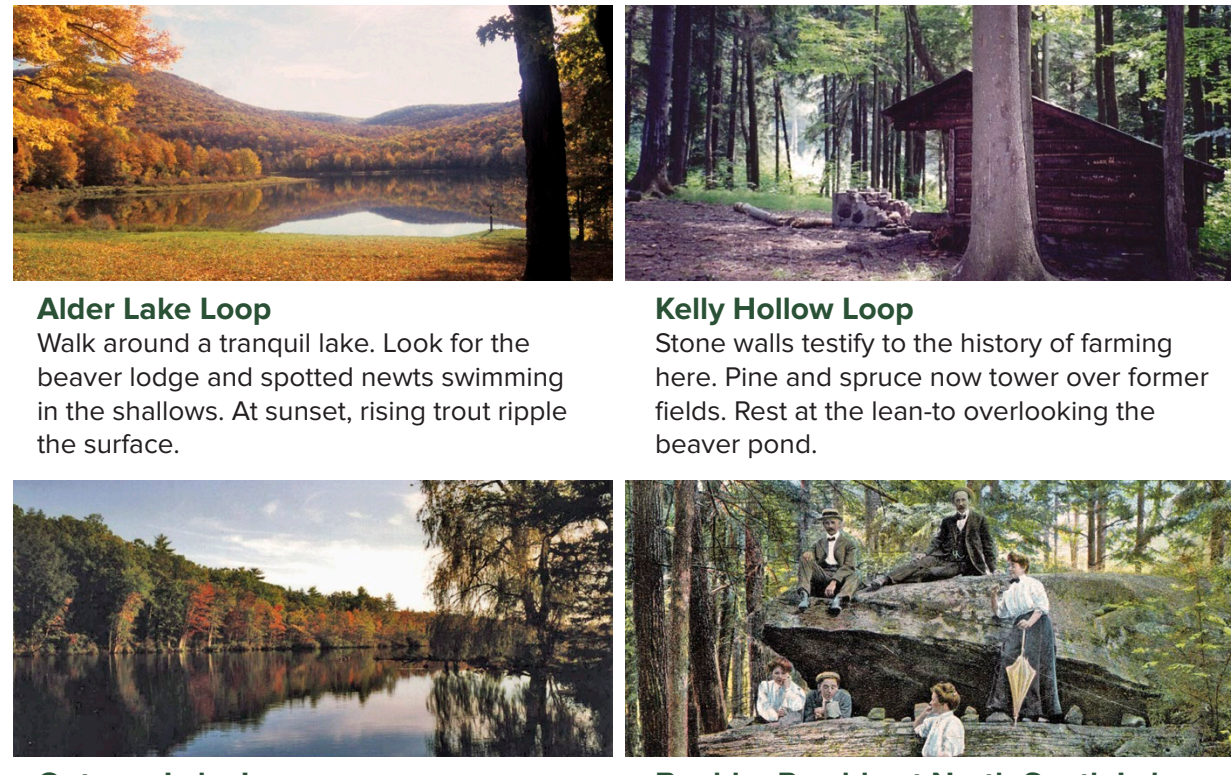
Cannonsville, Schoharie, Pepacton and Neversink reservoirs are also open to canoes, kayaks, sculls and sailboats, which require a free permit and boat tag.

For more information about recreation on and around the reservoirs, access permits and an interactive map, visit www.nyc.gov/dep, click on "Watershed Recreation"

TRAILS

The Catskill Park offers more than 300 miles of well-marked and easily accessible trails, varying in length from less than a mile to a 94-mile section of the Long Path. Horseback riding, mountain biking, cross-country skiing and snowmobiling trails are also available. Trail brochures are available at DEC's regional offices.

BRING THE FAMILY



Alder Lake Loop

Walk around a tranquil lake. Look for the beaver lodge and spotted newts swimming in the shallows. At sunset, rising trout ripple the surface.

Kelly Hollow Loop

Stone walls testify to the history of farming here. Pine and spruce now tower over former fields. Rest at the lean-to overlooking the beaver pond.

Onteora Lake Loop

Here, teams of oxen once hauled ponderous wagonloads of bluestone used for sidewalks in Kingston and cities throughout the country.

Boulder Ramble at North-South Lake

Discover huge boulders dropped by Ice Age glaciers, including Sunset Rock, overlooking the lake, and toothy-jawed Alligator Rock.

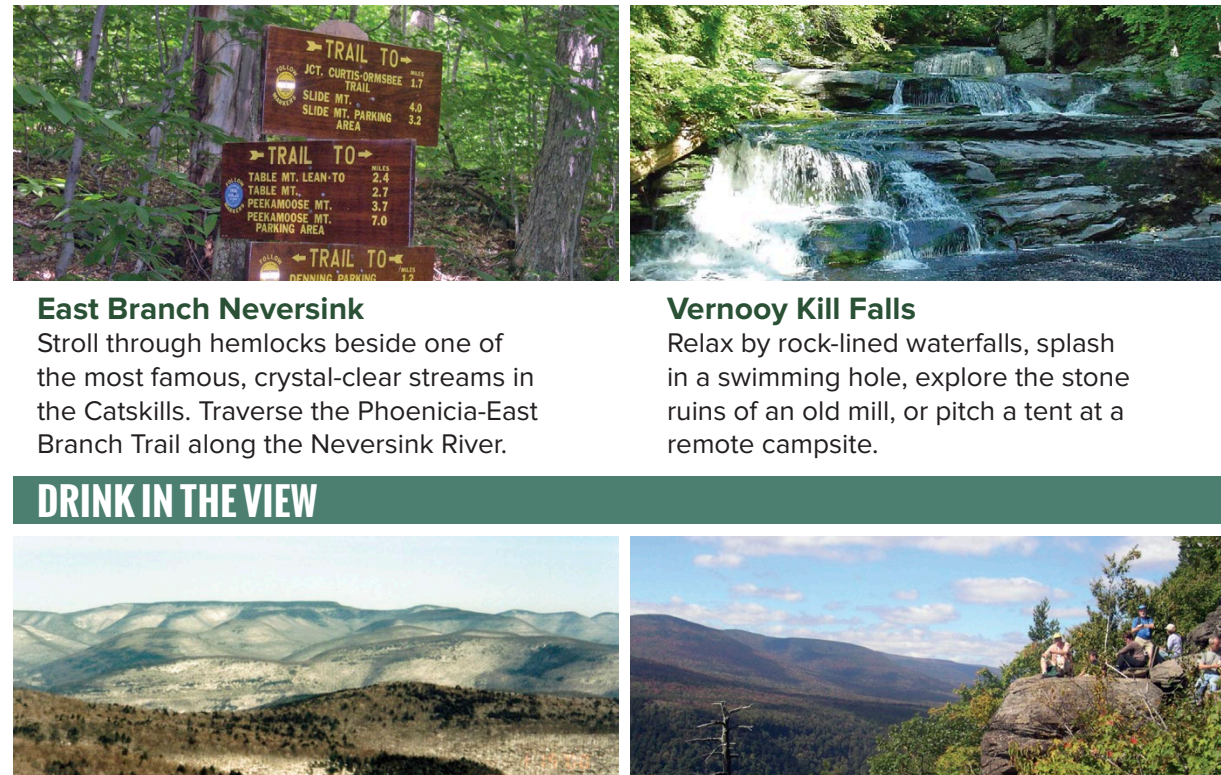
HIKES THROUGH HISTORY

Historic Hotels

Follow the Escarpment Trail past the sites of the Kaaterskill and Catskill Mountain House hotels, where presidents stayed during the 19th and early 20th centuries.



WATER, WATER EVERYWHERE



East Branch Neversink

Stroll through hemlocks beside one of the most famous, crystal-clear streams in the Catskills. Traverse the Phenicia-East Branch Trail along the Neversink River.

Vernooij Kill Falls

Relax by rock-lined waterfalls, splash in a swimming hole, explore the stone ruins of an old mill, or pitch a tent at a remote campsite.

DRINK IN THE VIEW



Giant Ledge

To access this wide panorama of the eastern Catskills, follow the Phenicia-East Branch Trail to the Giant Ledge-Panther Trail.

Huckleberry Point

Enjoy views of Platte Clove, the Hudson Valley, and Devil's Path as vultures and squawking ravens trace lazy circles above.

FIRE TOWERS

Historic fire towers at Balsam Lake Mountain, Overlook Mountain, Hunter Mountain, Mt. Tremper and Red Hill are popular destinations. For more information, call 845-586-2611 or visit <http://catskillcenter.org>



WINTER'S WONDERS

Willomoc Wild Forest

Lose yourself in snow-covered splendor while cross-country skiing or snowshoeing Willomoc's more than 40 miles of trails. Snowmobiles are allowed on some trails, so take care when cross-country skiing.



MOUNTAIN BIKING IN THE CATSKILL PARK

DEC preserve lands offer challenging mountain biking trail networks amidst the striking scenery of the Catskill Park.



Elm Ridge Wild Forest

Greene County, north of the Village of Windham. This system has 18 miles of trails offering some of the best mountain biking in New York, with great opportunities for both beginner and advanced riders.

Bluestone Wild Forest

Ulster County, west of Kingston. Bluestone Wild Forest provides an outstanding experience for cyclists of all abilities. The trailhead at Onteora Lake, easily accessed from Route 28, is the most popular.

For more information: Fats in the Cats Bicycle Club, www.fatsinthecats.com

PLANNING YOUR CATSKILL ADVENTURE

Discover the remote mountain villages, beautiful views, and steep river valleys that have made the Catskills a favorite tourist destination for generations.

For information on DEC Preserve rules and regulations, visit <http://www.dec.ny.gov/regulations/regulations.html> (Chapter III Lands and Forests tab).

REGIONAL TOURISM

I LOVE NY
www.iloveny.com
800-CALLNYS (456-8369)

Catskill Association for Tourism Services (CATS)
www.visitthecatskills.com

LOCAL TOURISM

Delaware County
607-746-2281
www.greatwesterncatskills.com

Green County
800-355-CATS (2287)
www.greatnorthcatskills.com

Sullivan County
800-882-CATS (2287)
www.scva.net

Ulster County
800-342-5826
www.ulstercountyalive.com



For an excellent introduction to the Catskills, stop by the Catskill Interpretive Center on Route 28 in Mount Tremper, just 20 minutes west of the NY State Thruway Exit 19 at Kingston. The Interpretive Center is a great resource for maps, information and suggestions from the staff. Open daily, 8:30 AM to 4:30 PM. The center includes exhibits, a nature trail and a picnic area.

RECREATION ORGANIZATIONS

Catskill Mountain Club
www.catskillmountainclub.org

NY-NJ Trail Conference
www.nynjtc.org
201-512-9348

ATTRACTIONS

Catskill Interpretive Center
NYS Route 28
Mount Tremper
www.catskillinterpretivecenter.org
845-688-3359

Catskill Fly Fishing Center and Museum
Livingston Manor
www.cffcm.net
845-439-4810

Empire State Railway Museum
Phoenicia
www.esrm.com
845-688-7501

GETTING THERE

By Bus:
Adirondack Trailways/
Pine Hill Trailways
www.trailwaysny.com
800-776-7548

Shortline
www.cochusa.com
800-631-8405

MAPS

The Catskill Center for Conservation and Development
www.catskillcenter.org
845-586-2611

NY-NJ Trail Conference
www.nynjtc.org
201-512-9348

Adirondack Mountain Club
www.admc.org (search for "maps")
800-395-8080

National Geographic Maps
Catskill Park #755
www.nationalgeographic.com
800-437-5521



CAMPING IN THE CATSKILLS

Each of DEC's eight Catskill campgrounds is a perfect gateway to the mountains and regional attractions, with well-maintained, easily accessible sites for tents and trailers.

All but Devil's Tombstone have showers and recreational programs. Each of the campgrounds have day-use areas. You don't have to stay overnight to enjoy activities like hiking, swimming, picnicking, and paddling.

NORTH-SOUTH LAKE

This largest and most popular campground in the Catskill Park offers an extensive list of recreational activities. It also has a full range of accessible features, including horse-mounting platforms.

County Route 18
Haines Falls, NY 12436
518-589-5058
www.dec.ny.gov/outdoor/24487.html

DEVIL'S TOMBSTONE

This oldest Catskills campground has few amenities, but its high mountain location, midway along the rugged Devil's Path hiking trail, is popular with serious hikers. Nearby Hunter Mountain holds a variety of festivals from spring through fall.

NYS Route 214
Hunter, NY 12442
845-688-7160
www.dec.ny.gov/outdoor/24462.html

WOODLAND VALLEY

Nestled below Slide Mountain, the Catskills' highest peak, this campground is also a trailhead for popular hiking trails. Other attractions are similar to those for Kenneth L. Wilson (below).
1319 Woodland Valley Road
Phoenicia, NY 12464
845-688-7647
www.dec.ny.gov/outdoor/24501.html

KENNETH L. WILSON

Enjoy the family-friendly and accessible boardwalk, trails, boat launch, and fishing pier. Surrounded by picturesque mountains, the large, wooded sites here are just five miles from the famous village of Woodstock. Enjoy shopping and entertainment there, or tubing and trout fishing on the equally famous Esopus Creek in nearby Phoenicia.
859 Wittenberg Road
Hunter, NY 12457
845-679-7020
www.dec.ny.gov/outdoor/24472.html

GENERAL INFORMATION
518-457-2500
www.dec.ny.gov/outdoor/camping.html

RESERVATIONS
800-456-CAMP (2267)
<https://newyorkstateparks.reserveamerica.com/>



LITTLE POND

Stroll around the pond, explore the ruins of an old farm and marvel at the view from Touchnet Mountain. There is primitive camping at remote sites. Wheelchair-accessible fishing pier.
549 Little Pond State Campground Road
Andes, NY 13731
845-439-5480
www.dec.ny.gov/outdoor/24478.html

BEAVERKILL

The famous Beaverkill, popular for trout fishing, flows through this campground, which is complete with a covered bridge. Other attractions are similar to those for Mongaup Pond.
792 Roserbrook Road Spur
Roscoe, NY 12776
845-439-4281
www.dec.ny.gov/outdoor/24455.html

MONGAUP POND

This campground offers a variety of water recreation on its large pond. A remote location with large wooded sites, many of which are wheelchair accessible. Don't miss a side trip to DEC's nearby Catskill Fish Hatchery.
231 Mongaup Pond Road
Livingston Manor, NY 12758
845-439-4233
www.dec.ny.gov/outdoor/24484.html

BEAR SPRING MOUNTAIN

Just outside the park's westernmost boundary, this campground offers unique features for horseback riding, with 24 stalls, a horse trailer ramp, and 24 miles of multi-use trails. Launt Pond has a beach, boat rentals, and excellent fishing there or at nearby Trout Brook.
512 East Trout Brook Road
Downsville, NY 13755
607-865-6989
www.dec.ny.gov/outdoor/24454.html

BACK-COUNTRY CAMPING

There's plenty of back-country camping throughout the Catskill Park. Backpacking the extensive trail system is a challenging, yet rewarding, way to experience quiet ponds and scenic peaks. Search "back-country camping" at www.dec.ny.gov for more information. You can also choose from numerous privately run campgrounds in the Catskills. See www.visitthecatskills.com for more information.

THE PRESERVE WITHIN THE PARK

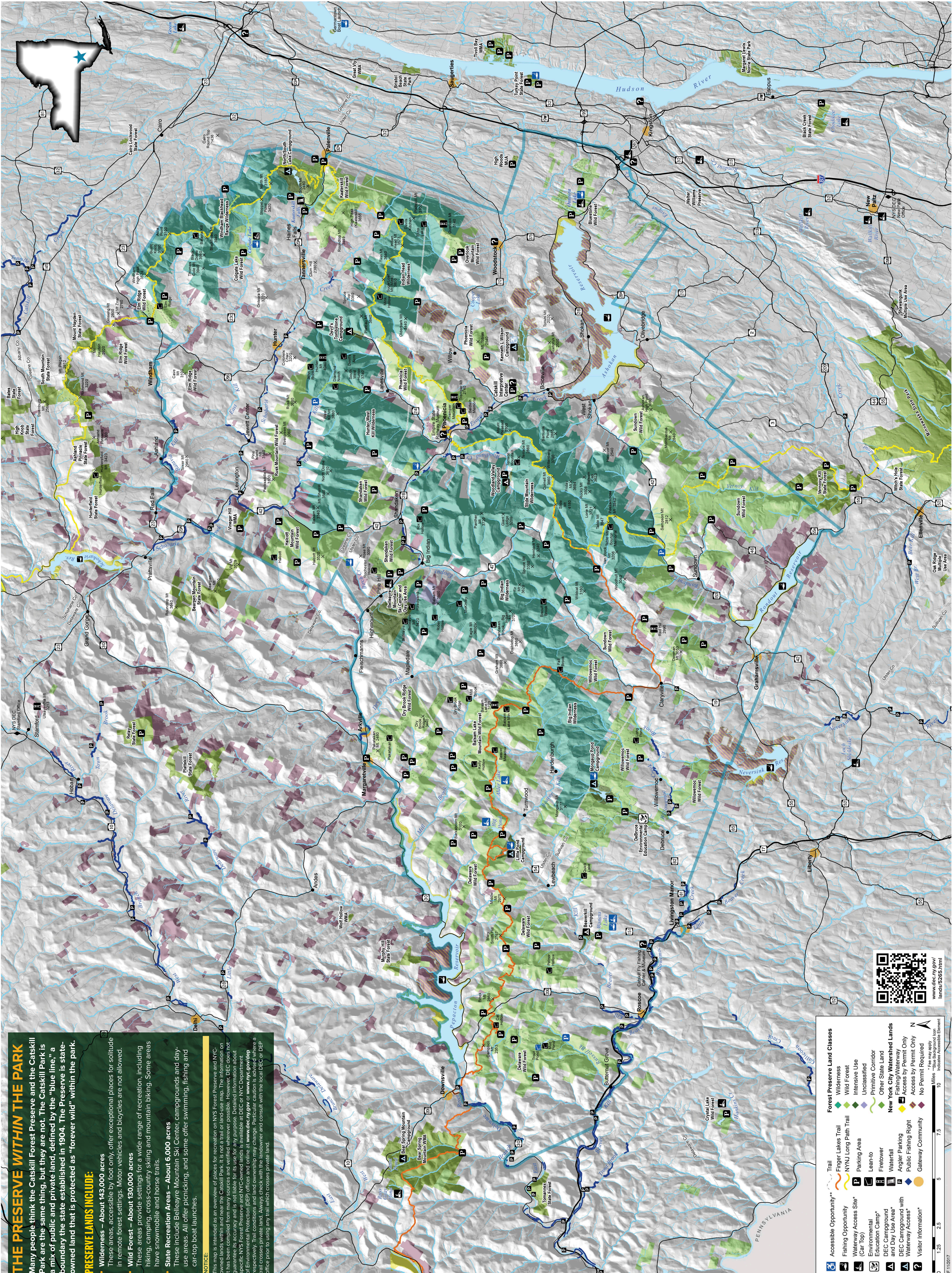
Many people think the Catskill Forest Preserve and the Catskill Park are the same thing, but they are not. The Catskill Park is a mix of public and private land, defined by the "blue line," a boundary the state established in 1904. The Preserve is state-owned land that is protected as "forever wild" within the park.

PRESERVE LANDS INCLUDE:

- Wilderness** – About 143,000 acres
These areas, accessible by foot only, offer exceptional places for solitude in remote forest settings. Motor vehicles and bicycles are not allowed.
- Wild Forest** – About 130,000 acres
These areas provide settings for a wide range of recreation, including hiking, camping, cross-country skiing and mountain biking. Some areas have snowmobile and horse trails.
- State Recreation Areas** – About 6,000 acres
These include Belleayre Mountain Ski Center, campgrounds and day-use areas. All offer picnicking, and some offer swimming, fishing and car-top boat launches.

NOTICE:

This map is intended as an overview of places for recreation on NYS Forest Preserve and NYC-owned lands within and near the Catskill Park. It is not a trail or land-use map. The information on this map has been compiled from many sources and verified wherever possible. However, DEC does not guarantee its accuracy and is not liable for its use for any purpose. Detailed information about specific NYS Forest Preserve and NYC-owned lands is available at DEC or NYC Department of Environmental Protection (DEP) offices and online at www.dec.ny.gov or www.nyc.gov/dep respectively. Trail conditions and land ownership may change. Particular caution is advised where a trail crosses private land. Always check with the landowner and consult with the local DEC or DEP office prior to using any trail which crosses private land.



Accessible Opportunity**

- Fishing Opportunity
- Watershed Access Site*
- Watershed Access Site* (Car Top)
- Environmental Education Camp*
- DEC Campground and Day Use Area*
- DEC Campground with Watershed Access*
- Visitor Information*

Trail

- Finger Lakes Trail
- NYNY Long Path Trail
- Parking Area
- Leash-to-Leash
- Firetower
- Waterfall
- Angler Parking
- Public Fishing Right
- Gateway Community

Forest Preserve Land Classes

- Wilderness
- Wild Forest
- Intensive Use
- Unclassified
- Primitive Corridor
- Other State Land
- New York City Watershed Lands
- Fishing/Watershed Access by Permit Only
- Access by Permit Only
- No Permit Required

Legend:

- Trail
- Finger Lakes Trail
- NYNY Long Path Trail
- Parking Area
- Leash-to-Leash
- Firetower
- Waterfall
- Angler Parking
- Public Fishing Right
- Gateway Community

Scale: 0, 1.25, 2.5, 5, 7.5, 10 Miles

Footnote: * Fee may apply. **Blue background icon indicates Accessible Element.

Source: www.dec.ny.gov/lands/6265.html