

Figure 4. – Current Forest Type and Forest Stand Identification Number Maps

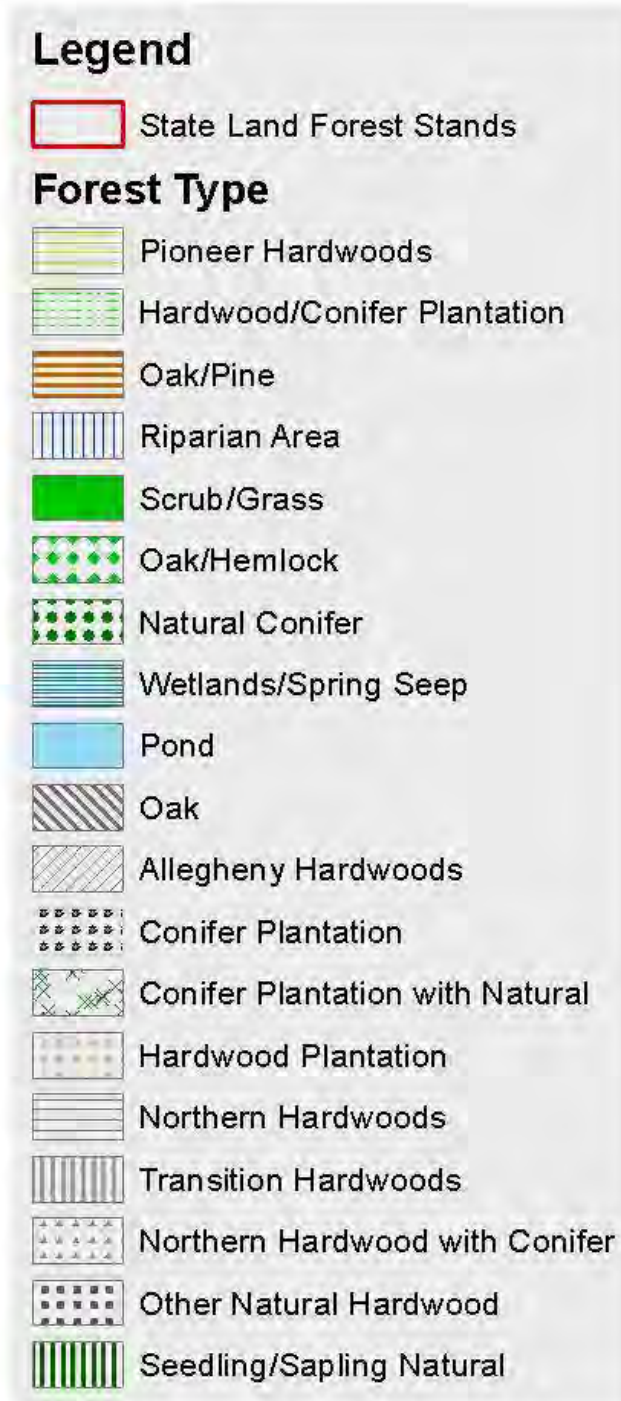


FIGURE 4. – CURRENT FOREST TYPE AND FOREST STAND IDENTIFICATION NUMBER MAPS

Cattaraugus RA 1



FIGURE 4. – CURRENT FOREST TYPE AND FOREST STAND IDENTIFICATION NUMBER MAPS

Cattaraugus RA 2

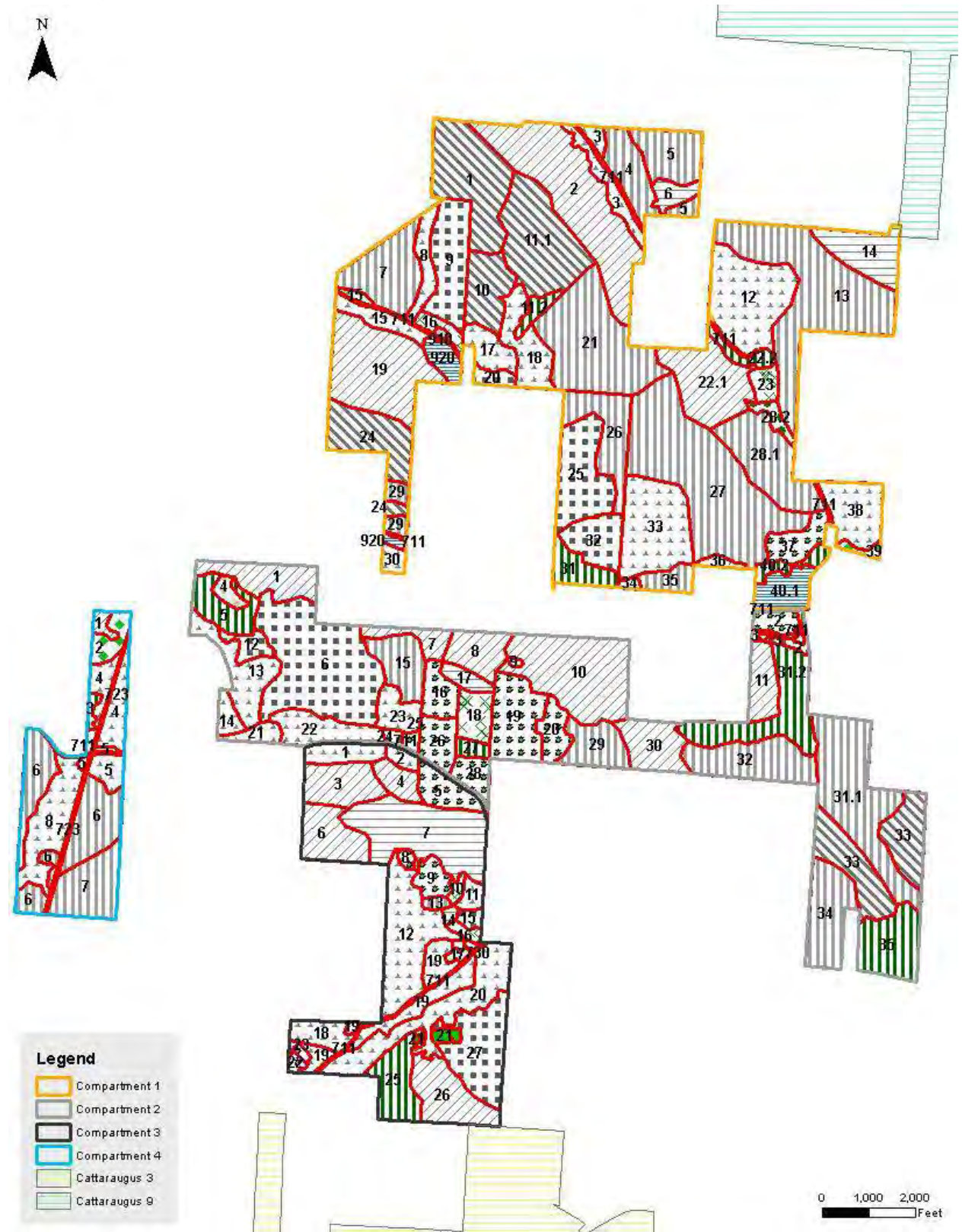


FIGURE 4. – CURRENT FOREST TYPE AND FOREST STAND IDENTIFICATION NUMBER MAPS

Cattaraugus RA 3



FIGURE 4. – CURRENT FOREST TYPE AND FOREST STAND IDENTIFICATION NUMBER MAPS

Cattaraugus RA 4



0 1,000 2,000  
Feet

**Legend**

-  Compartment 1
-  Compartment 2
-  Compartment 3

FIGURE 4. – CURRENT FOREST TYPE AND FOREST STAND IDENTIFICATION NUMBER MAPS

Cattaraugus RA 5 Compartment 1





FIGURE 4. – CURRENT FOREST TYPE AND FOREST STAND IDENTIFICATION NUMBER MAPS

Cattaraugus RA 6

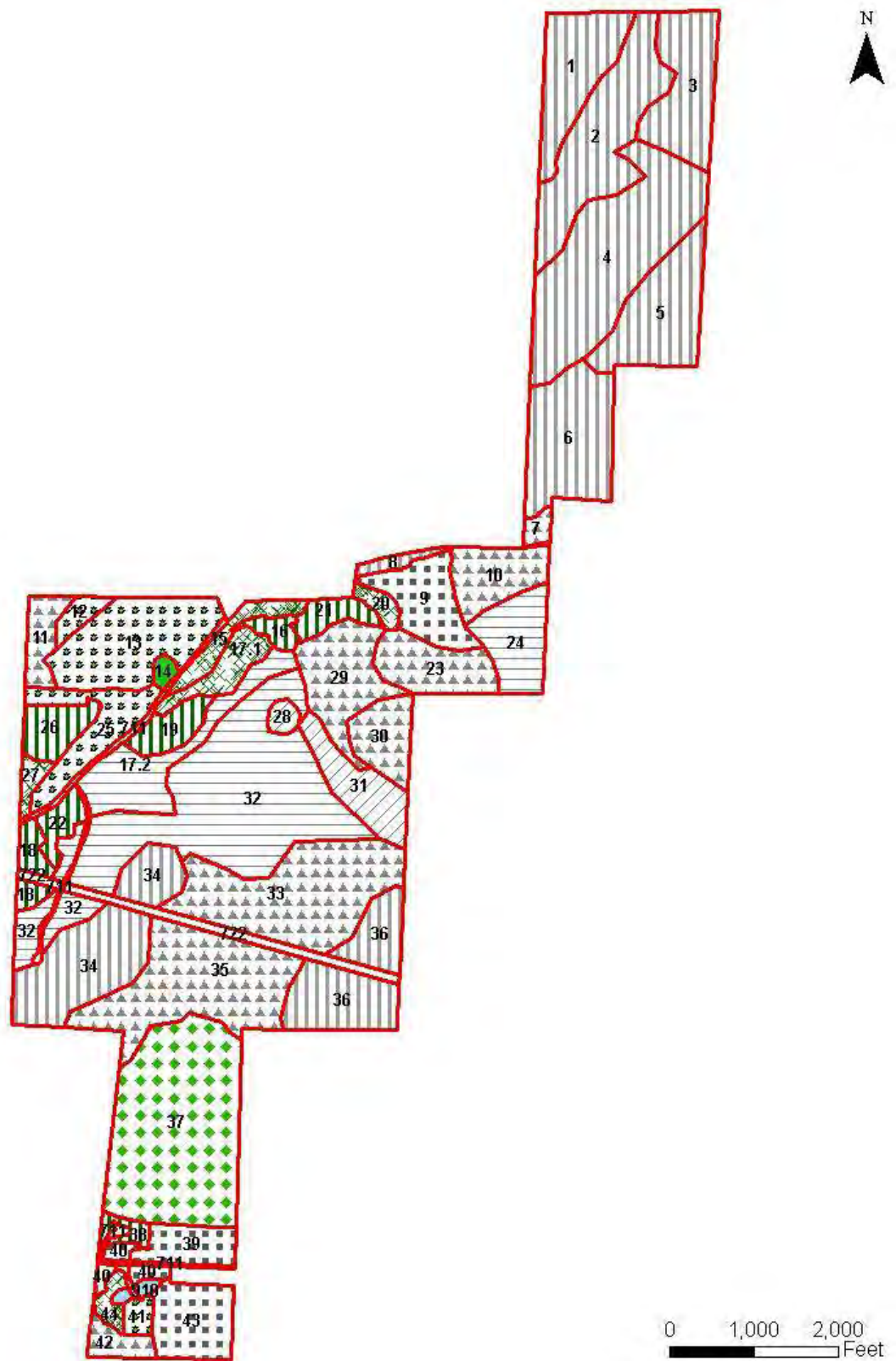




FIGURE 4. – CURRENT FOREST TYPE AND FOREST STAND IDENTIFICATION NUMBER MAPS

Cattaraugus RA 7

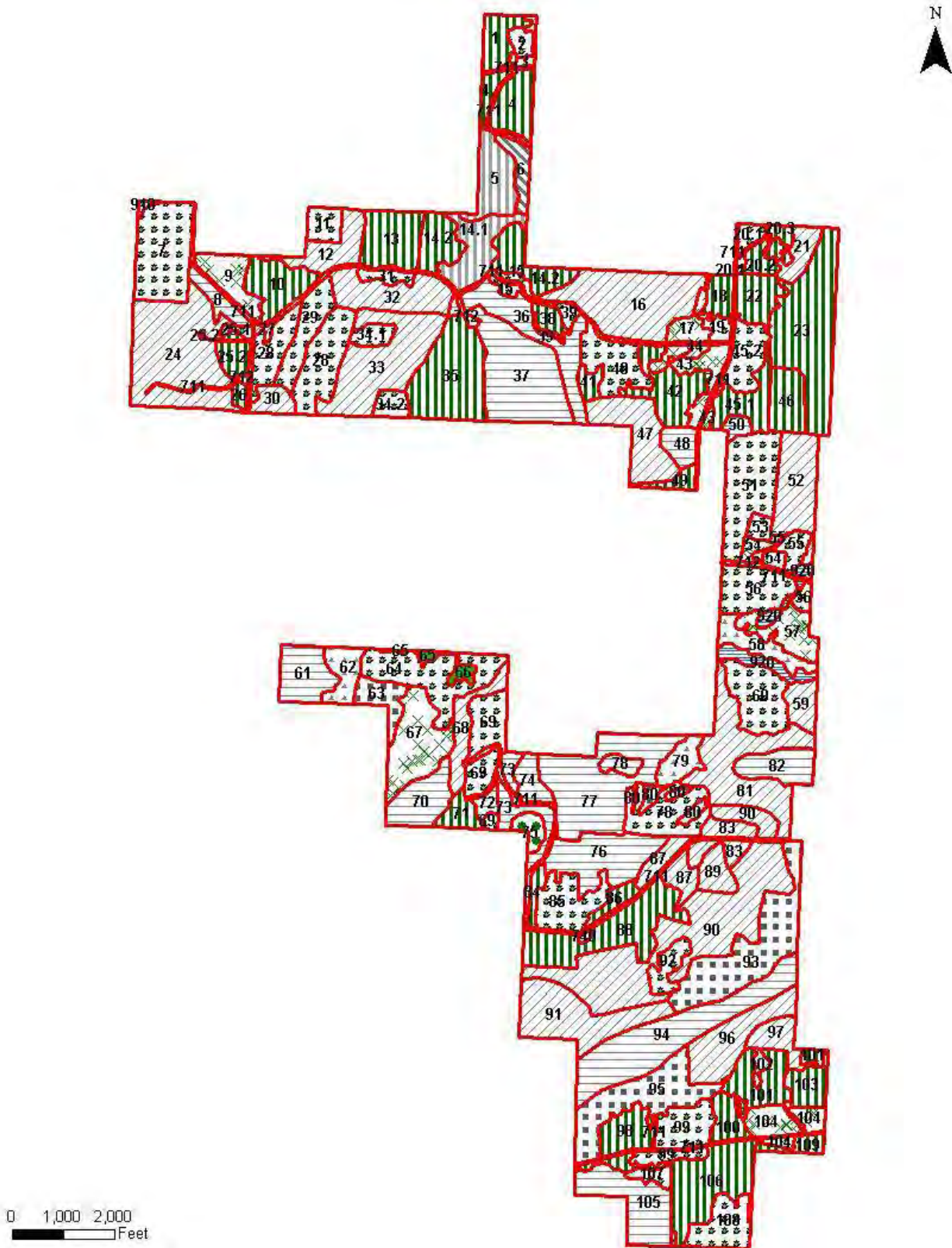


FIGURE 4. – CURRENT FOREST TYPE AND FOREST STAND IDENTIFICATION NUMBER MAPS

Cattaraugus RA 8

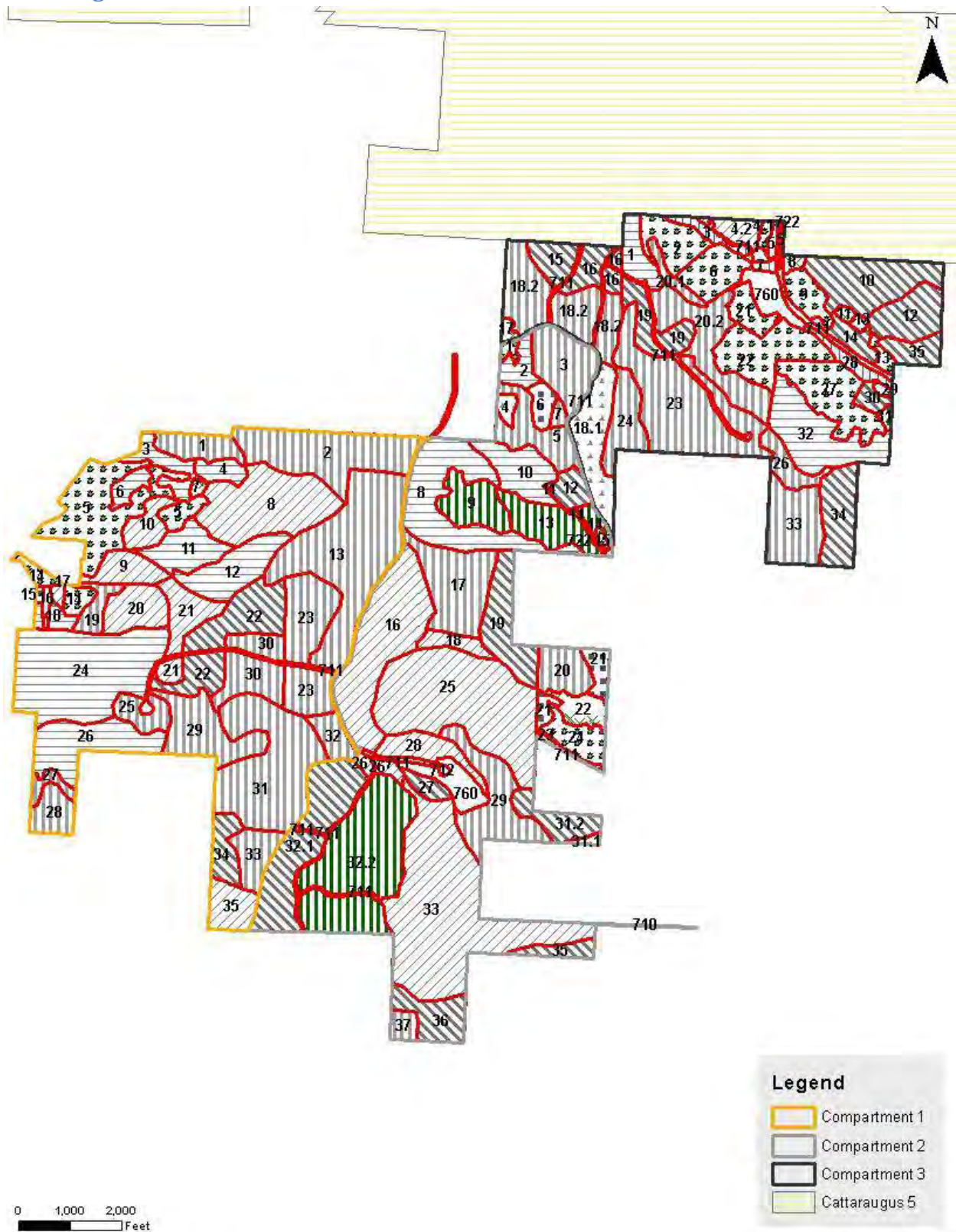


FIGURE 4. – CURRENT FOREST TYPE AND FOREST STAND IDENTIFICATION NUMBER MAPS

Cattaraugus RA 9

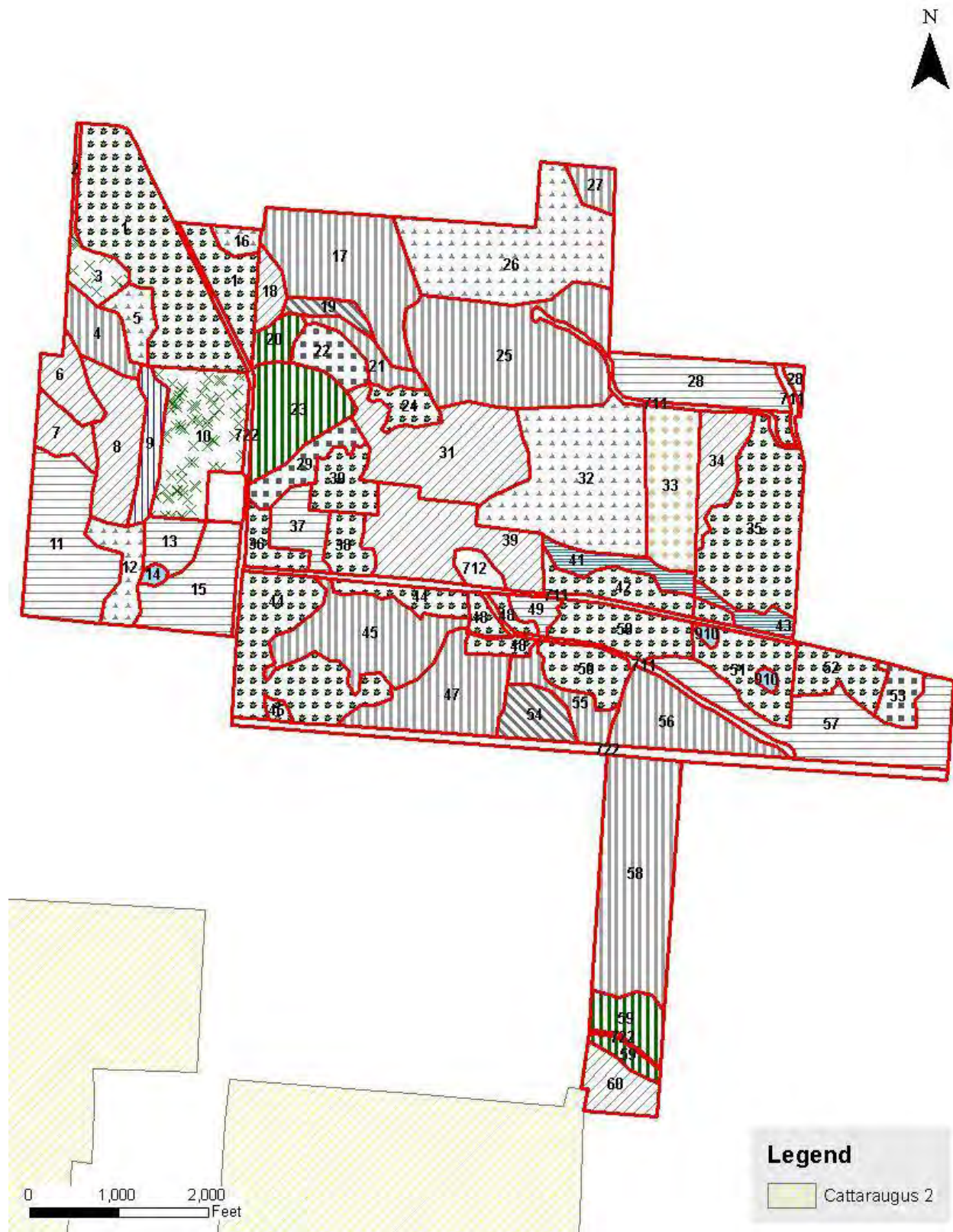


FIGURE 4. – CURRENT FOREST TYPE AND FOREST STAND IDENTIFICATION NUMBER MAPS

Cattaraugus RA 12



FIGURE 4. – CURRENT FOREST TYPE AND FOREST STAND IDENTIFICATION NUMBER MAPS

Cattaraugus RA 13

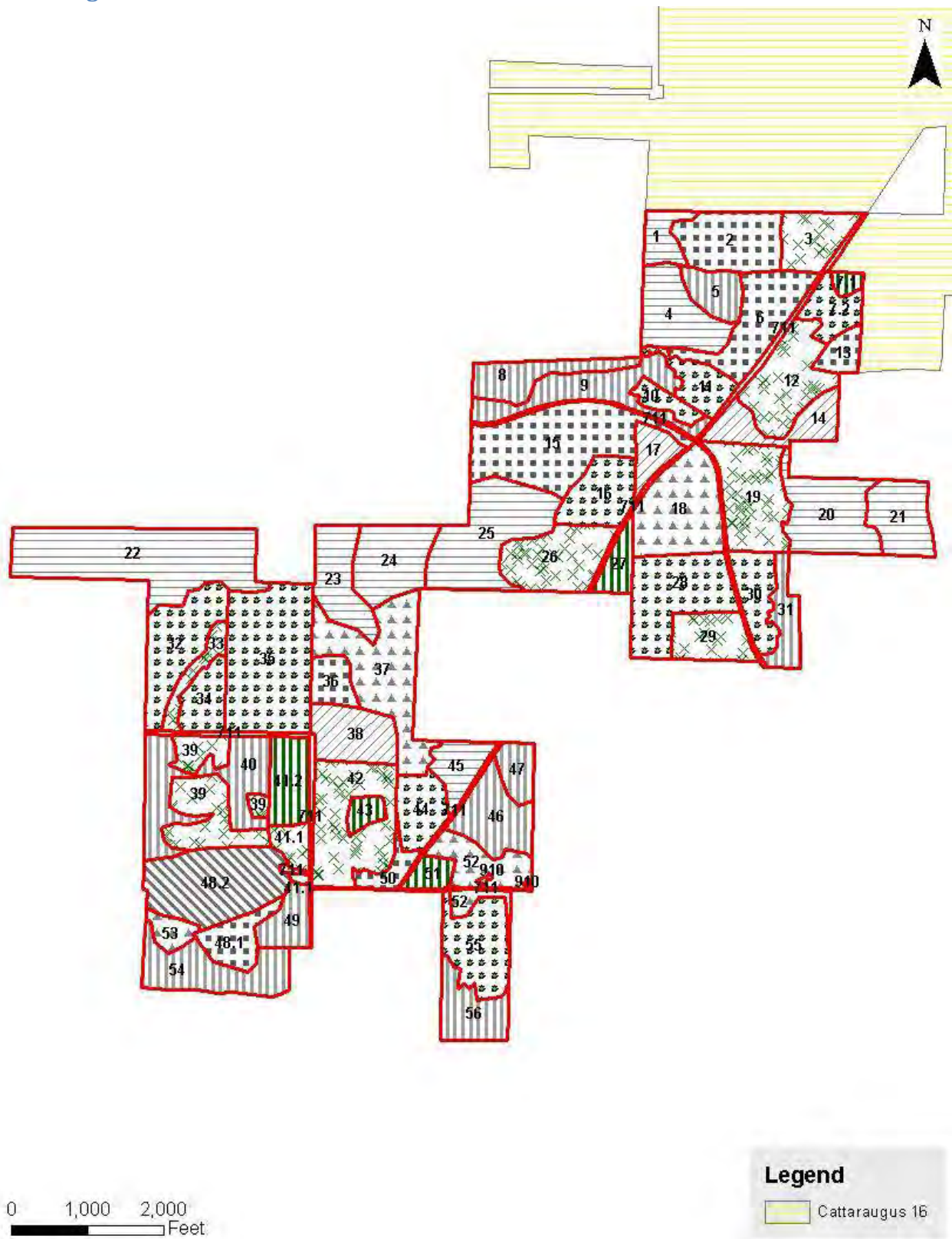


FIGURE 4. – CURRENT FOREST TYPE AND FOREST STAND IDENTIFICATION NUMBER MAPS

Cattaraugus RA 14

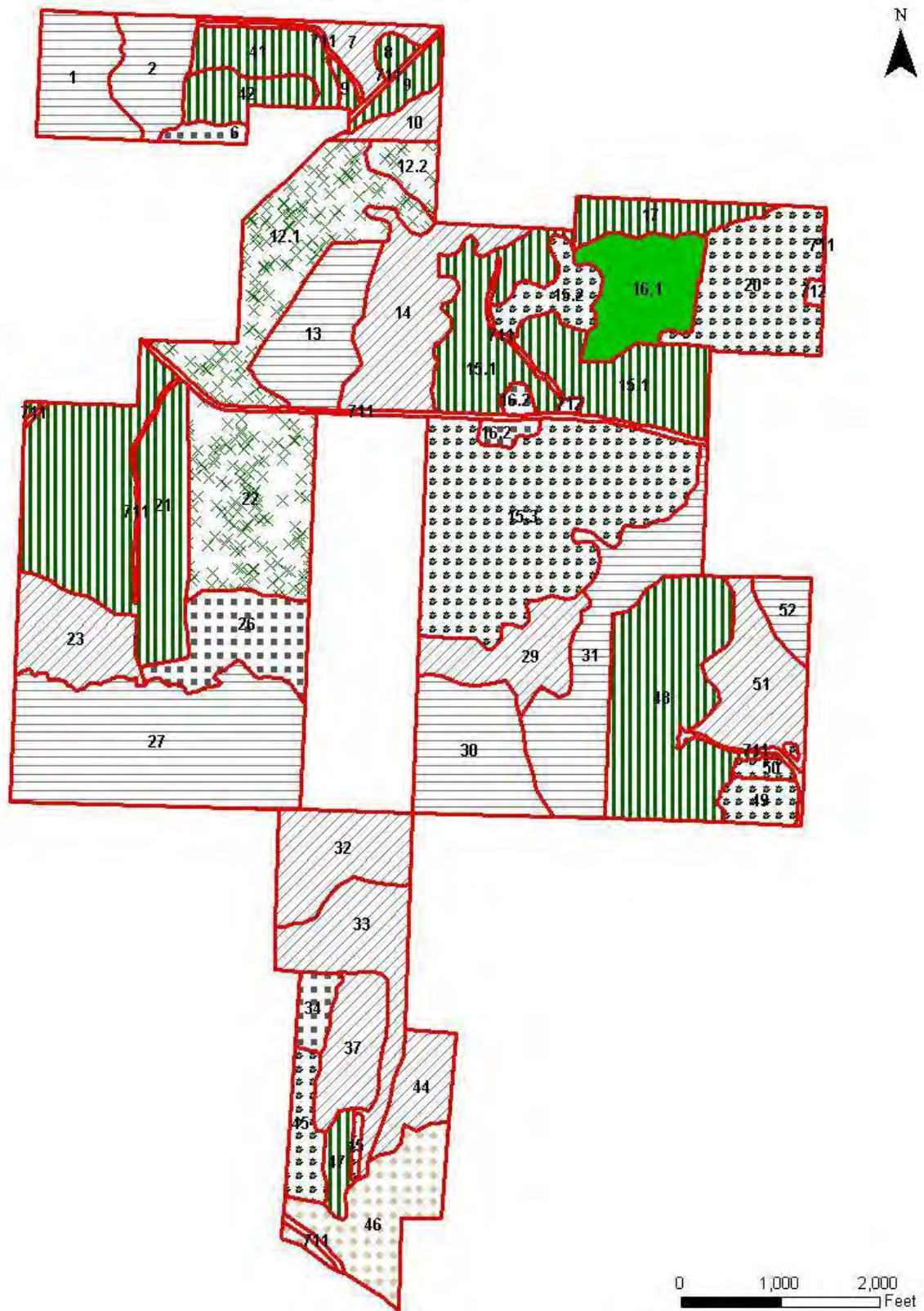


FIGURE 4. – CURRENT FOREST TYPE AND FOREST STAND IDENTIFICATION NUMBER MAPS

Cattaraugus RA 16

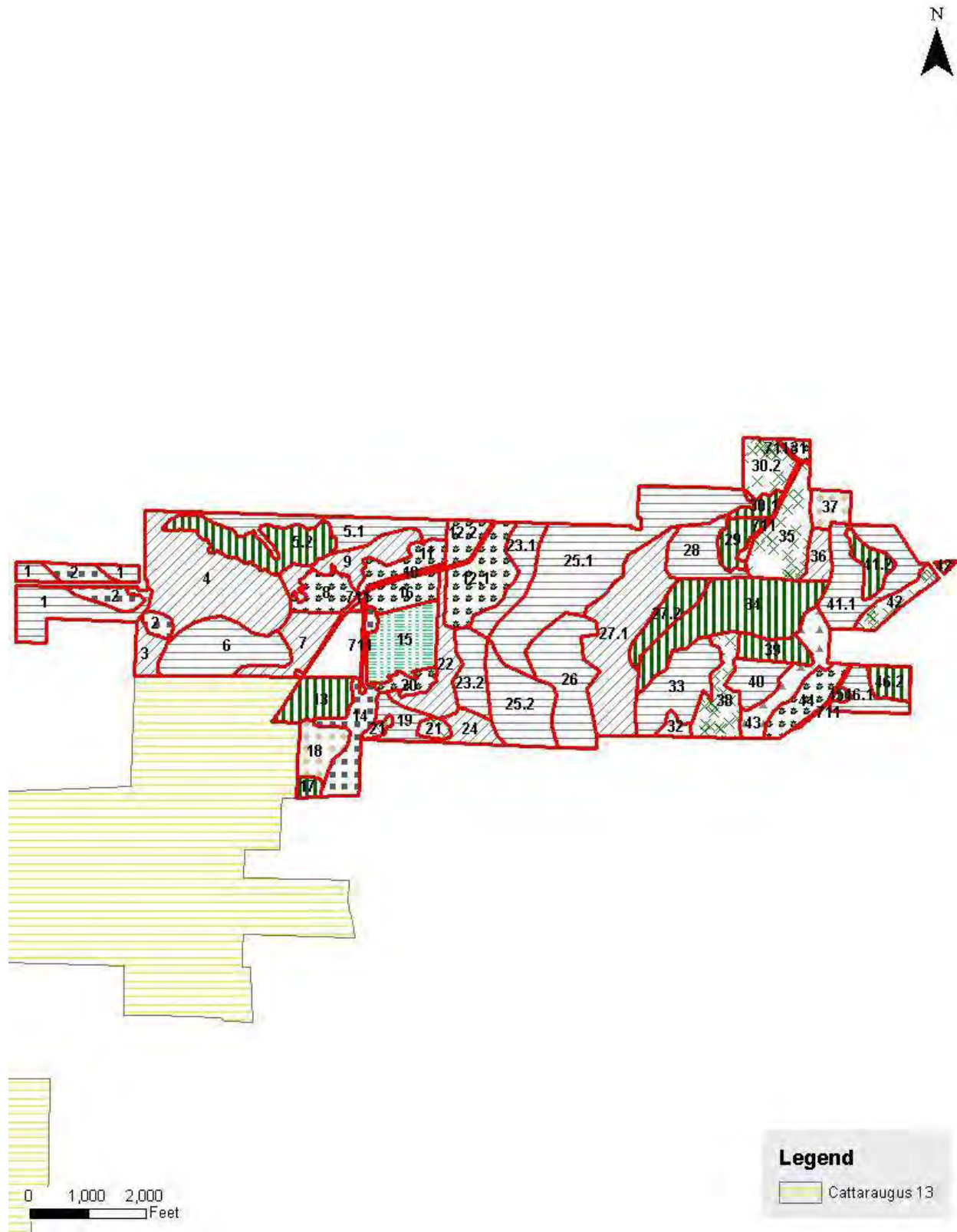


FIGURE 4. – CURRENT FOREST TYPE AND FOREST STAND IDENTIFICATION NUMBER MAPS

Cattaraugus RA 17





FIGURE 4. – CURRENT FOREST TYPE AND FOREST STAND IDENTIFICATION NUMBER MAPS

Cattaraugus RA 18



FIGURE 4. – CURRENT FOREST TYPE AND FOREST STAND IDENTIFICATION NUMBER MAPS

Cattaraugus RA 19

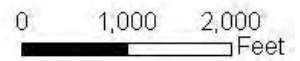


FIGURE 4. – CURRENT FOREST TYPE AND FOREST STAND IDENTIFICATION NUMBER MAPS

Cattaraugus RA 20

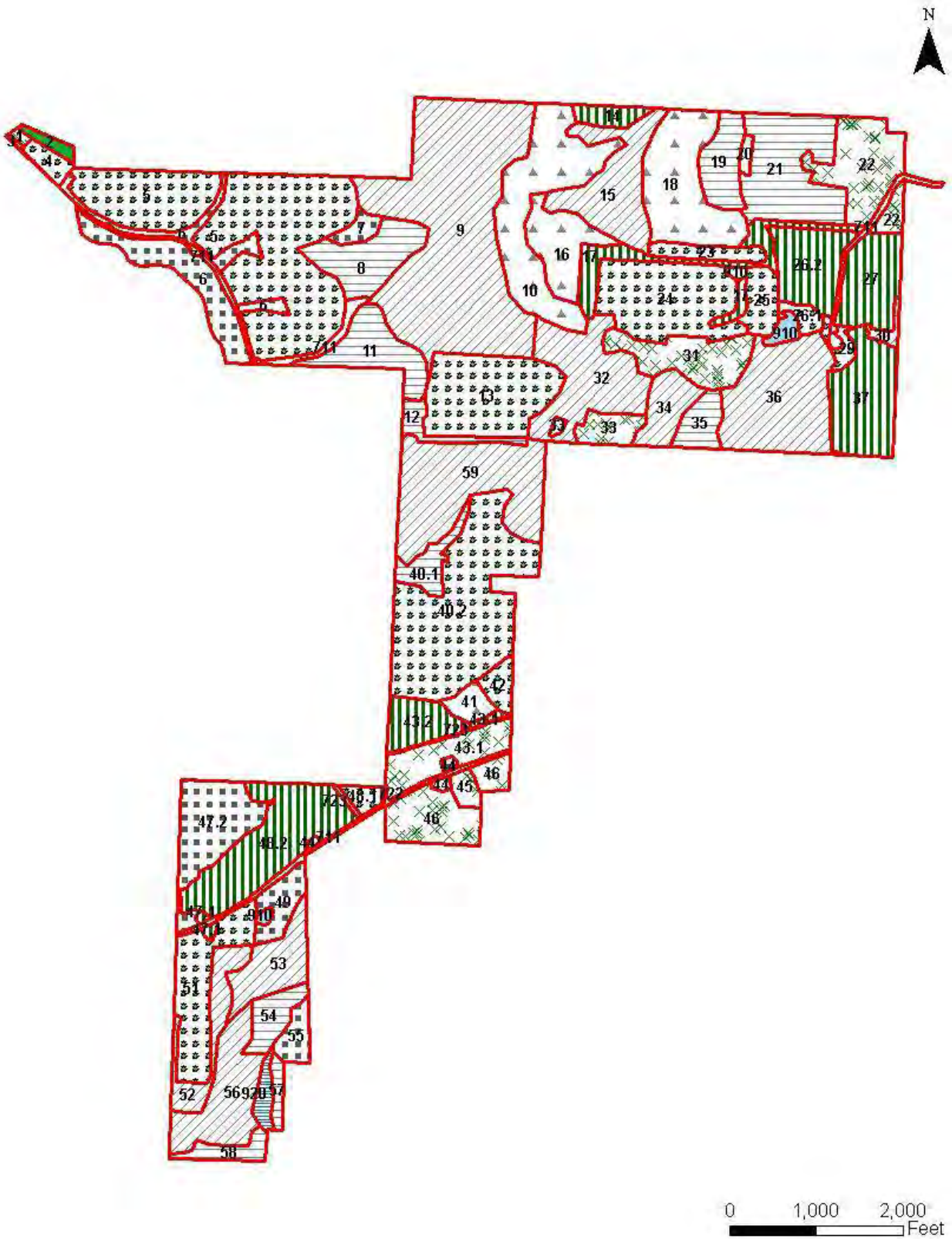


FIGURE 4. – CURRENT FOREST TYPE AND FOREST STAND IDENTIFICATION NUMBER MAPS

Cattaraugus RA 21

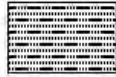




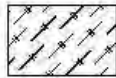


**Figure 5. – Current Management Maps**

**Management Type**



0-5 YEARS



6-10 YEARS



NO SCHEDULED MANAGEMENT



NON MANAGED



PROTECTED AREA

FIGURE 5. – CURRENT MANAGEMENT MAPS

Cattaraugus RA 1

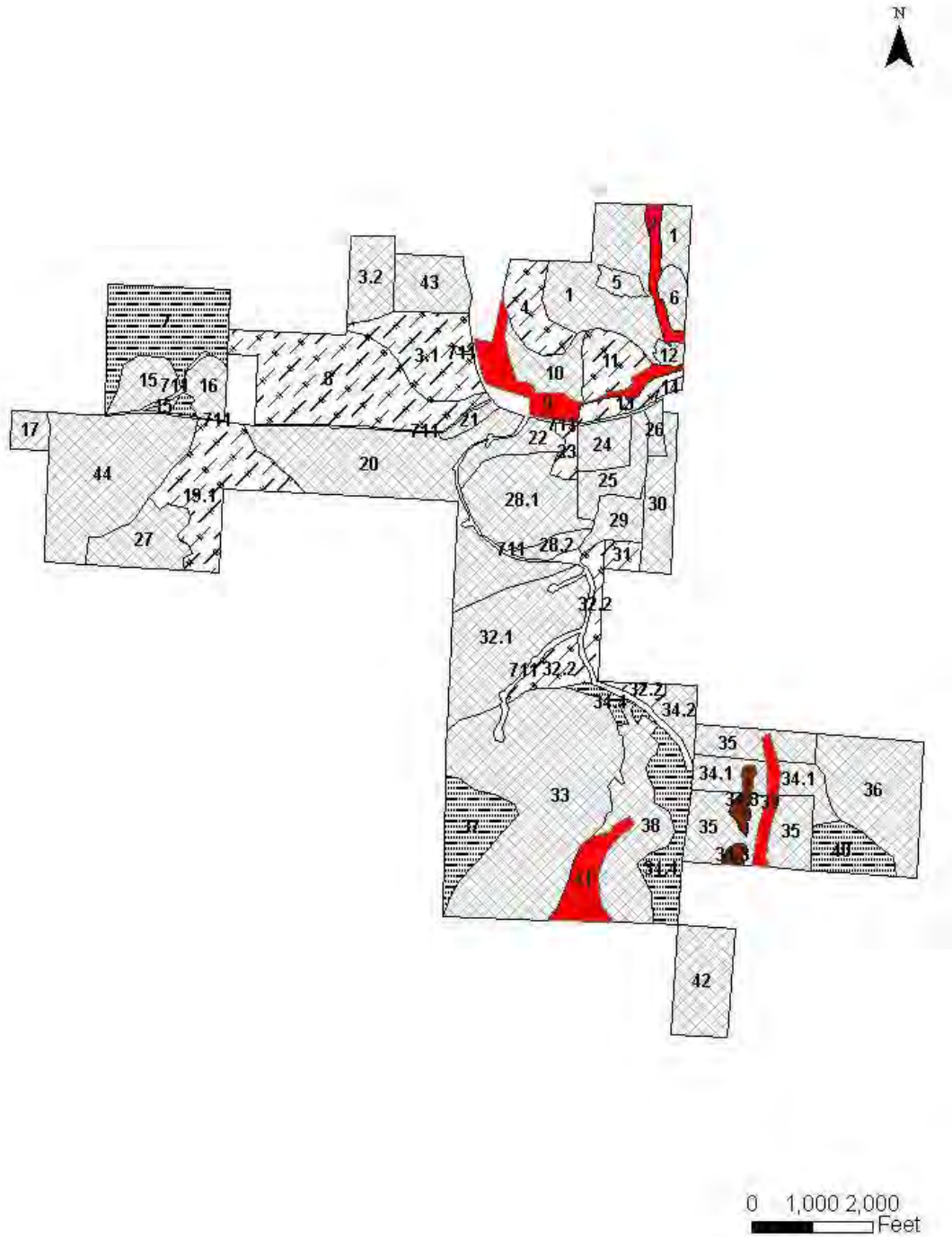




FIGURE 5. – CURRENT MANAGEMENT MAPS

Cattaraugus RA 2



FIGURE 5. – CURRENT MANAGEMENT MAPS

Cattaraugus RA 3

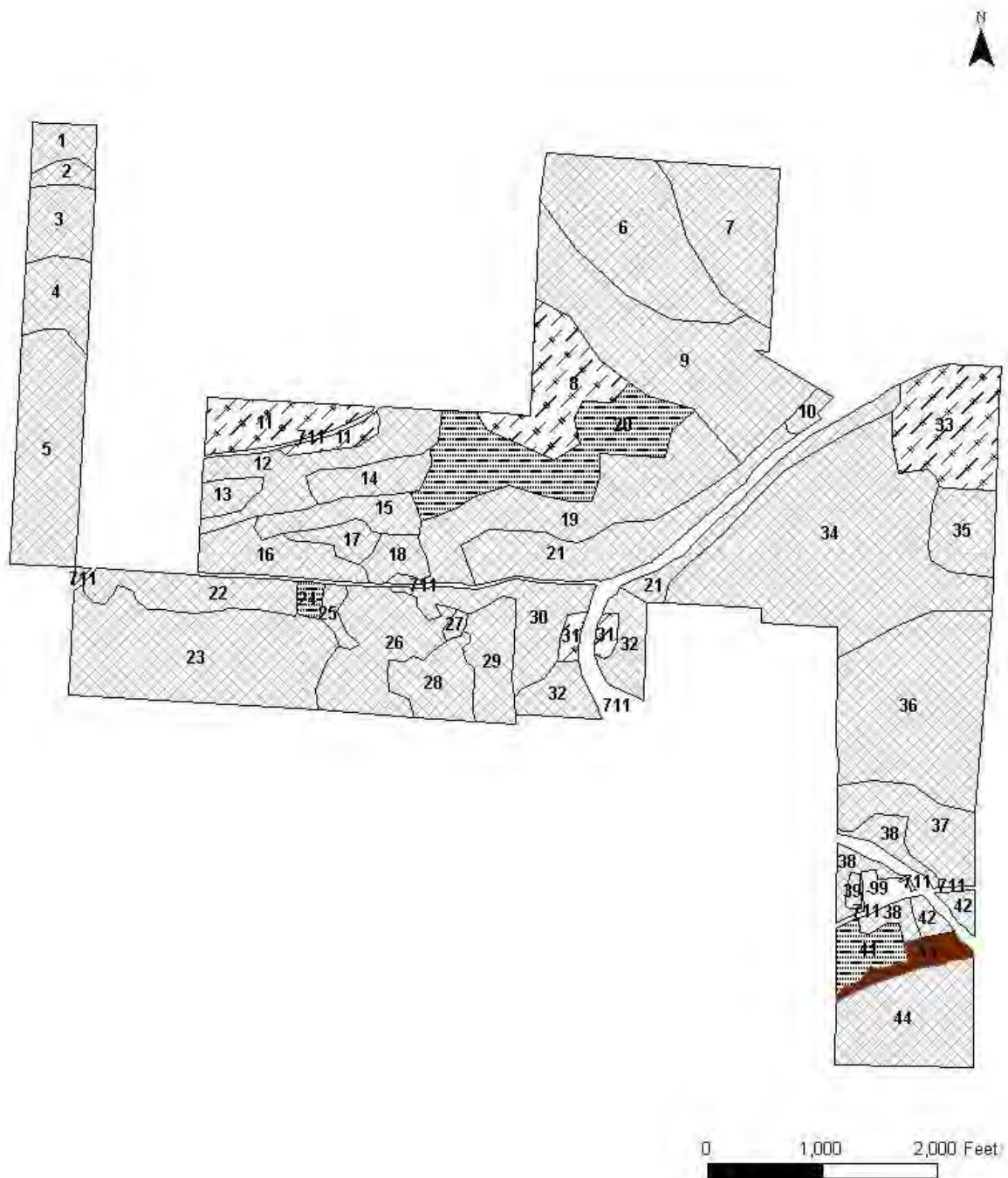


FIGURE 5. – CURRENT MANAGEMENT MAPS

Cattaraugus RA 4

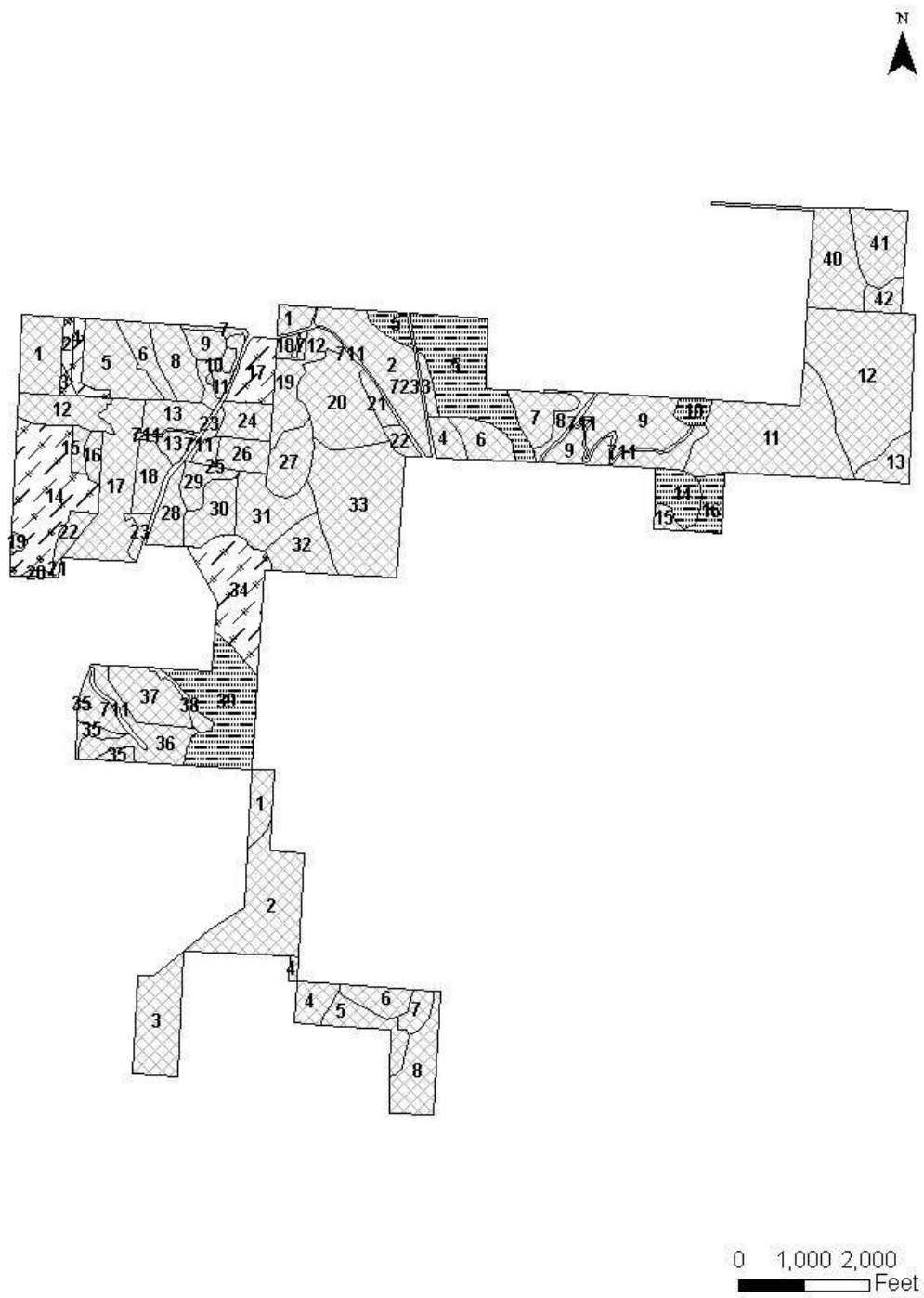


FIGURE 5. – CURRENT MANAGEMENT MAPS

Cattaraugus RA 5 Compartment 1



FIGURE 5. – CURRENT MANAGEMENT MAPS

Cattaraugus RA 5 Compartment 2

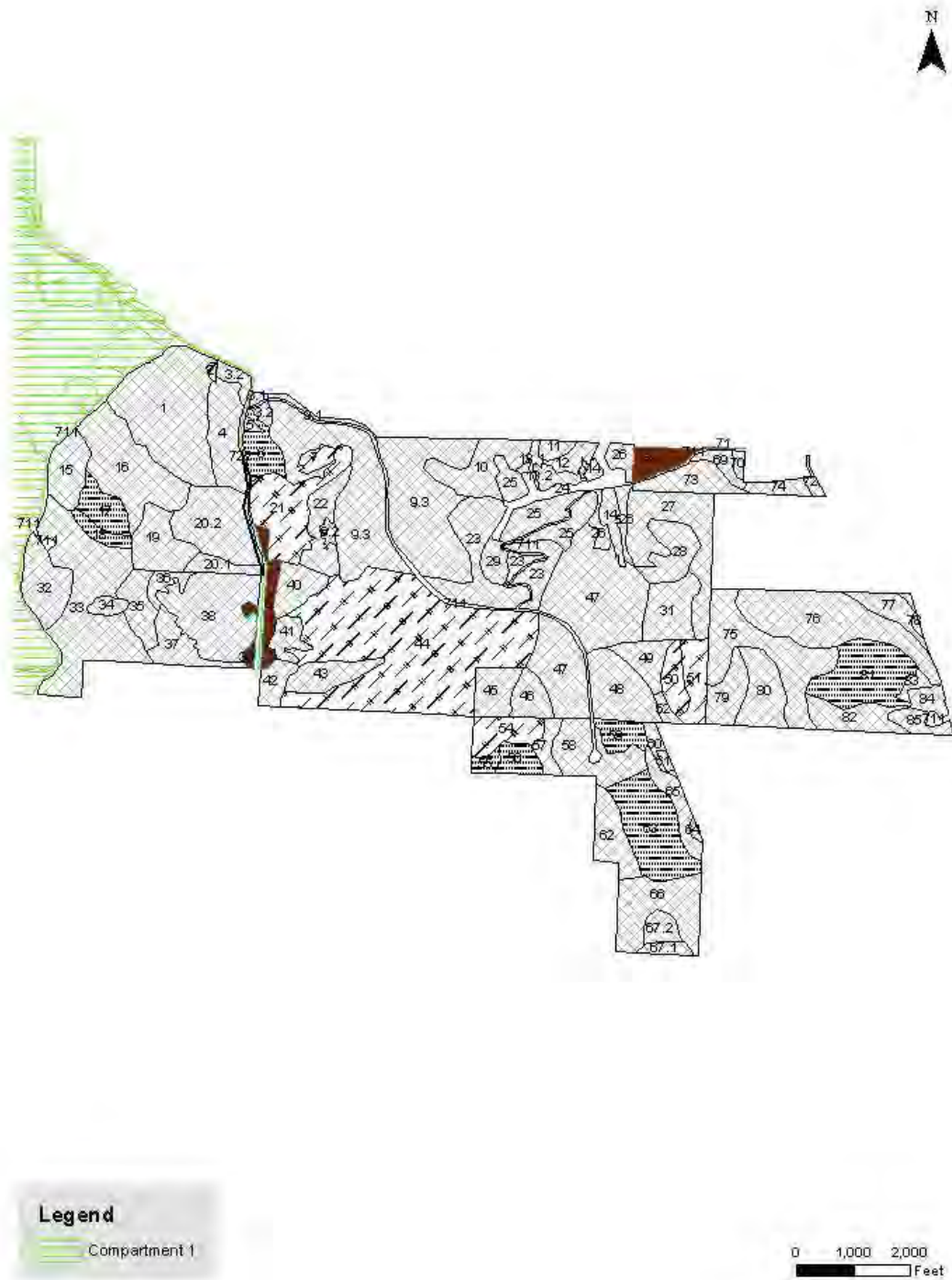


FIGURE 5. – CURRENT MANAGEMENT MAPS

Cattaraugus RA 6

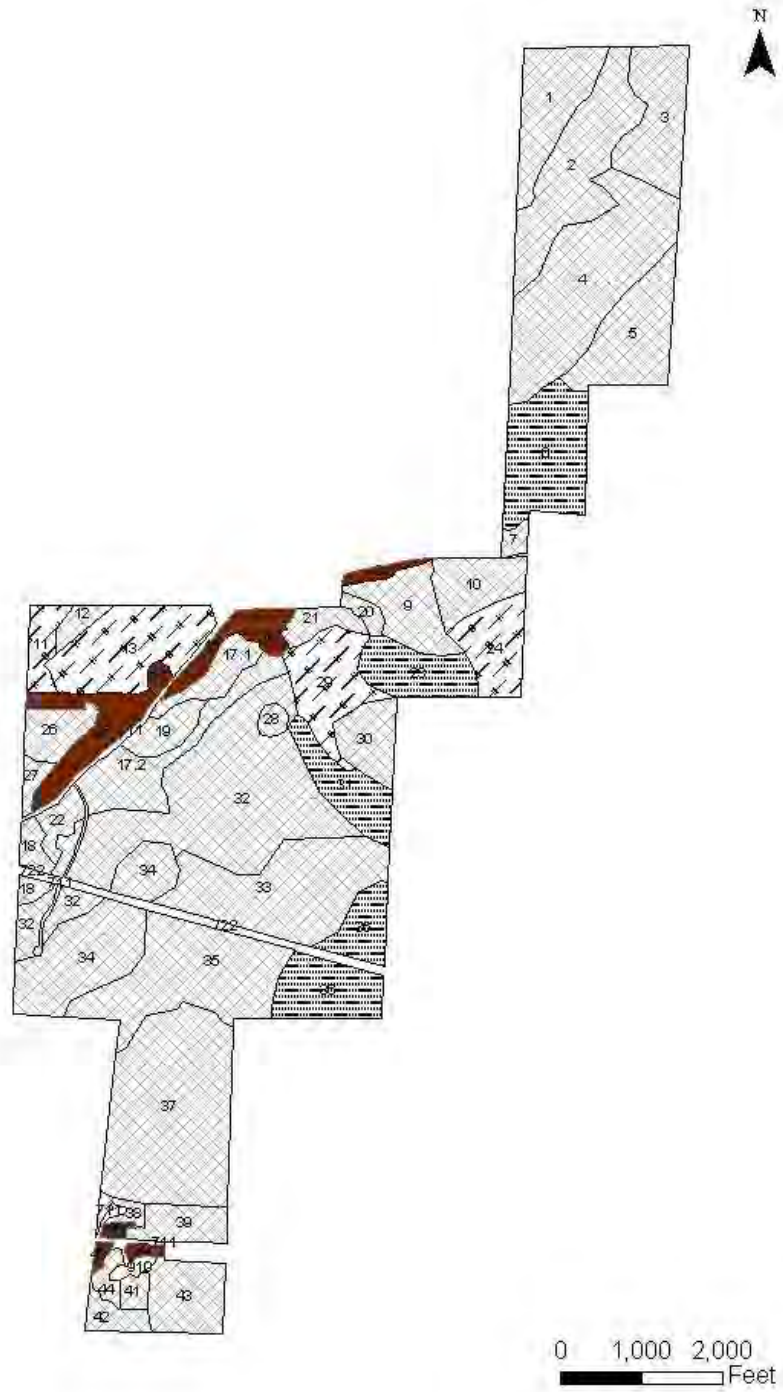


FIGURE 5. – CURRENT MANAGEMENT MAPS

Cattaraugus RA 7

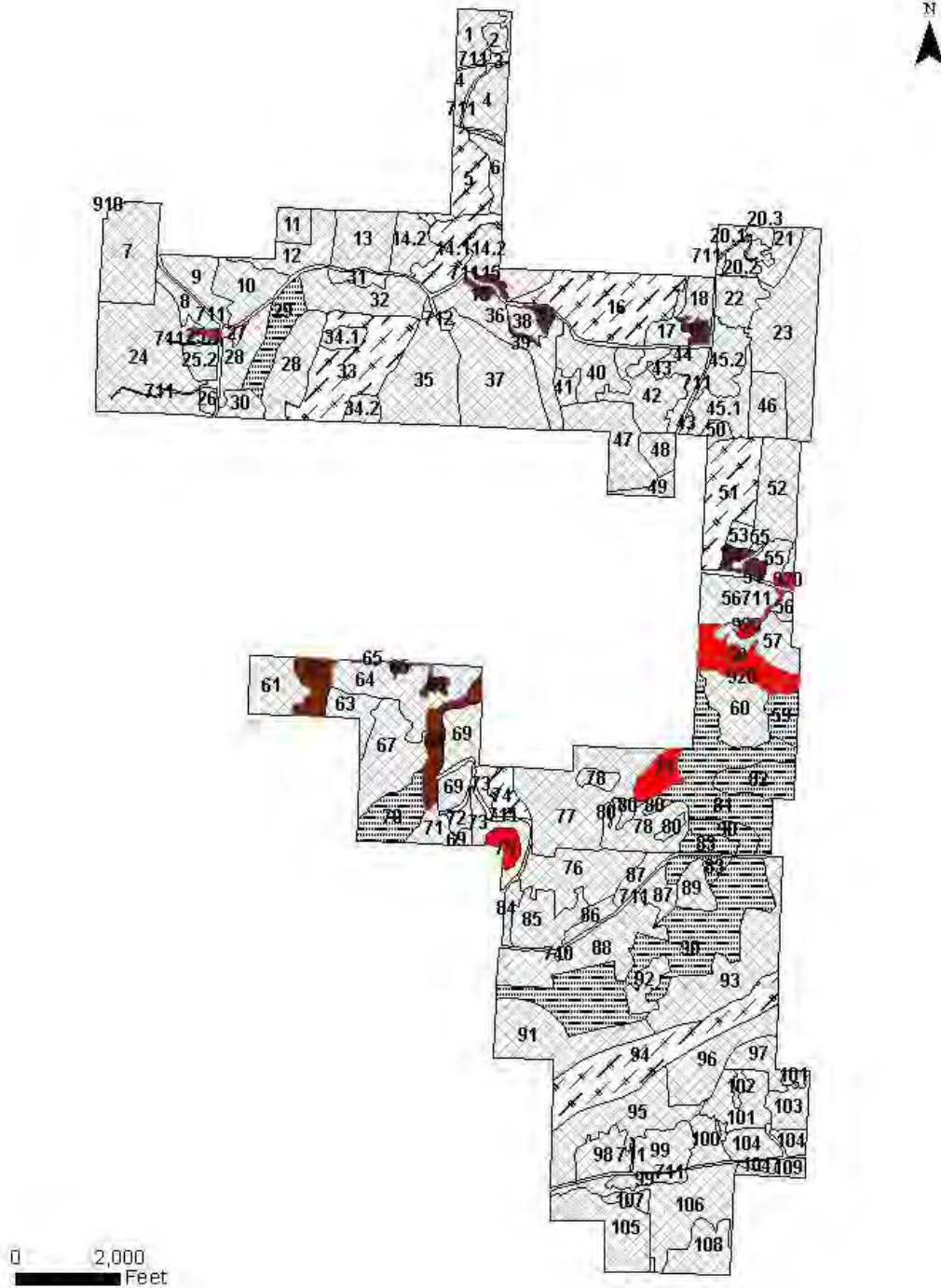


FIGURE 5. – CURRENT MANAGEMENT MAPS

Cattaraugus RA 8

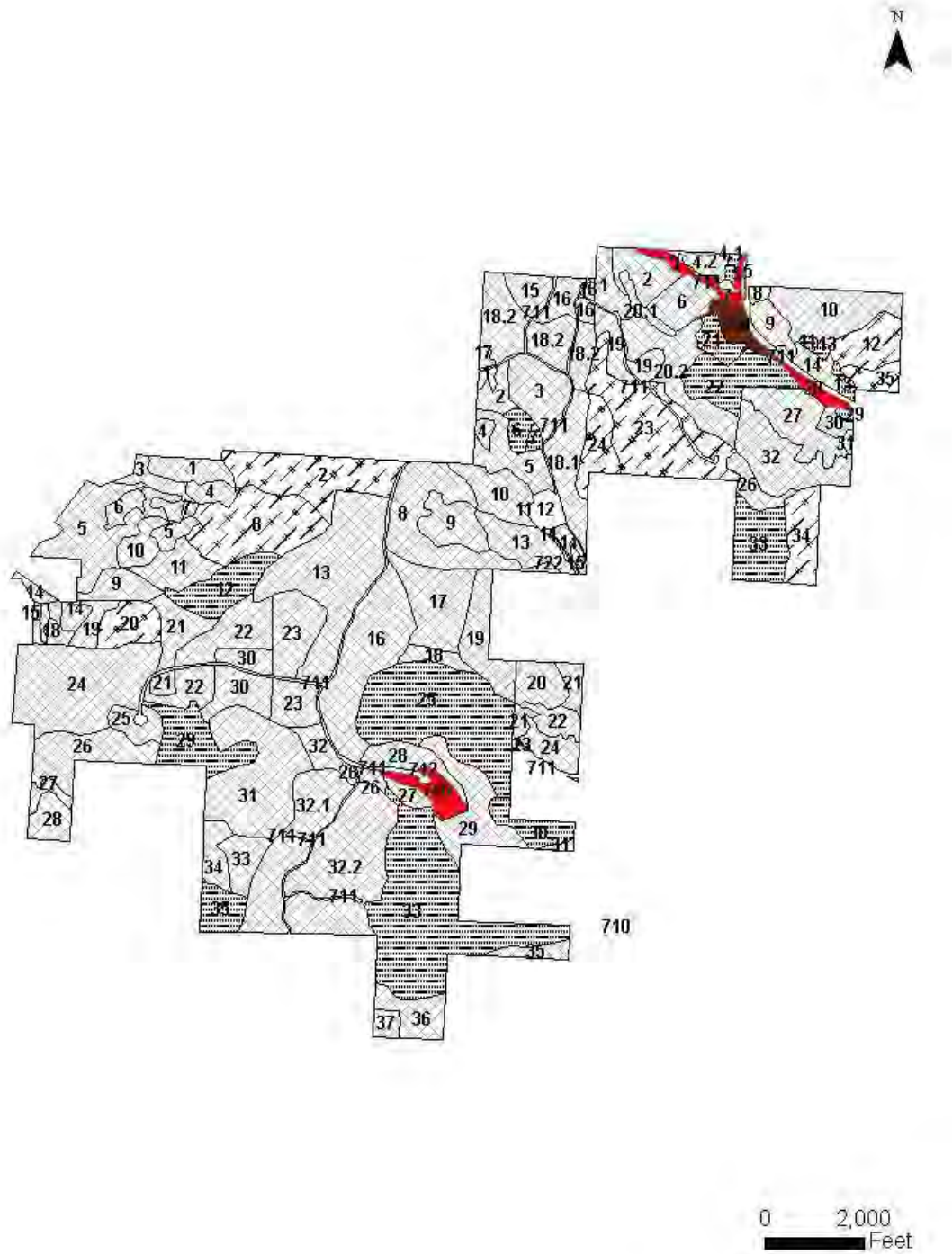




FIGURE 5. – CURRENT MANAGEMENT MAPS

Cattaraugus RA 9

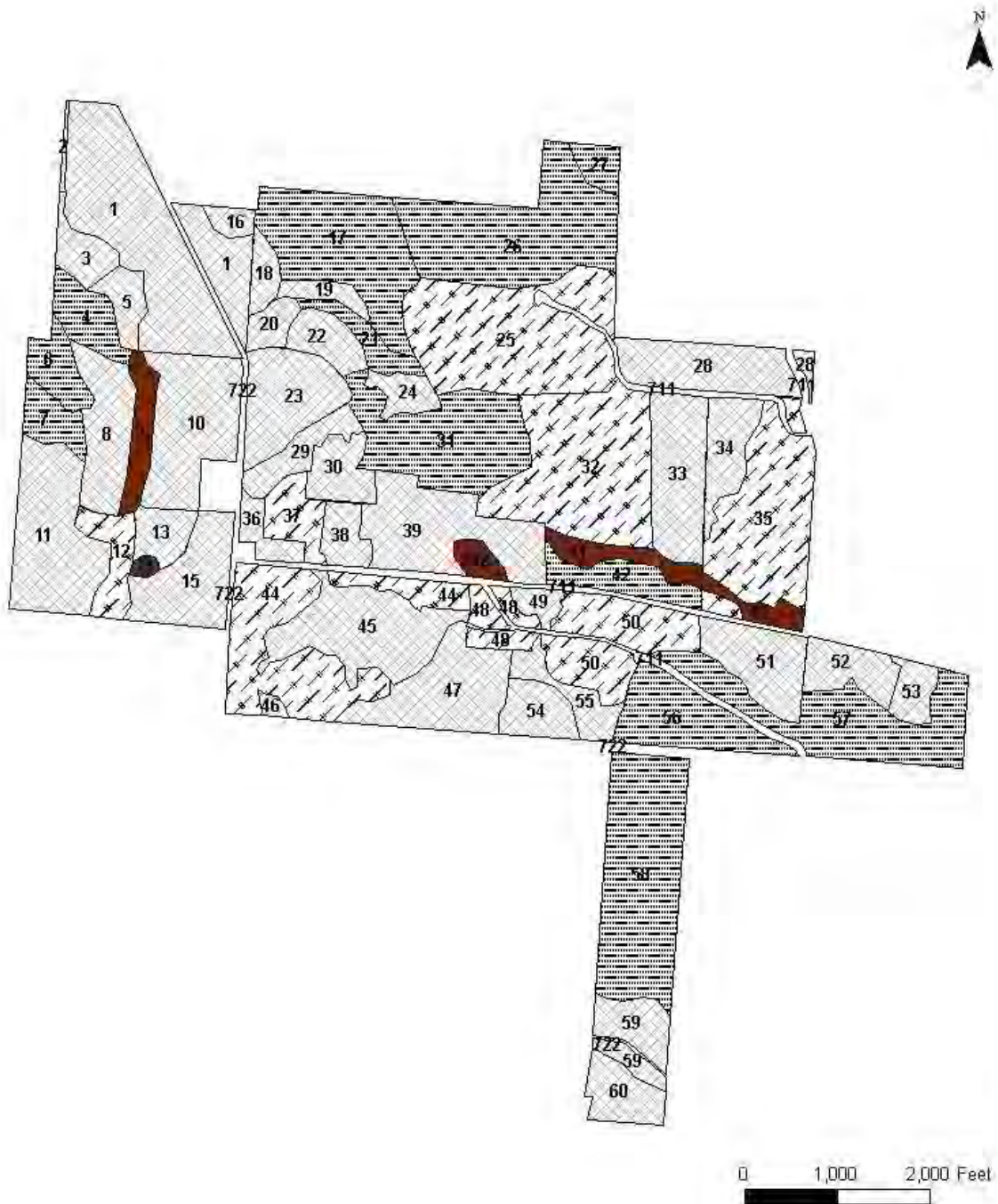


FIGURE 5. – CURRENT MANAGEMENT MAPS

Cattaraugus RA 12

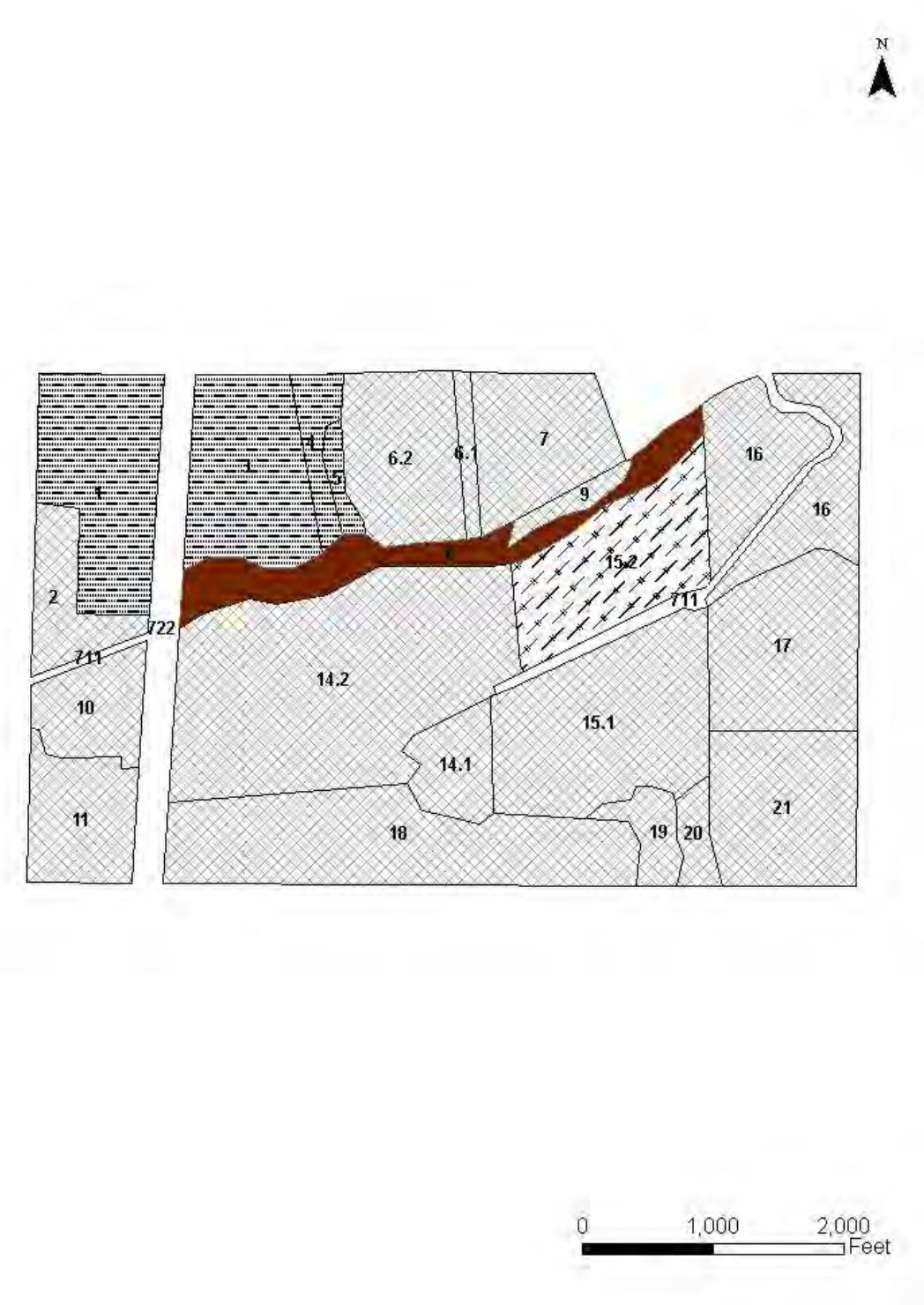


FIGURE 5. – CURRENT MANAGEMENT MAPS

Cattaraugus RA 13

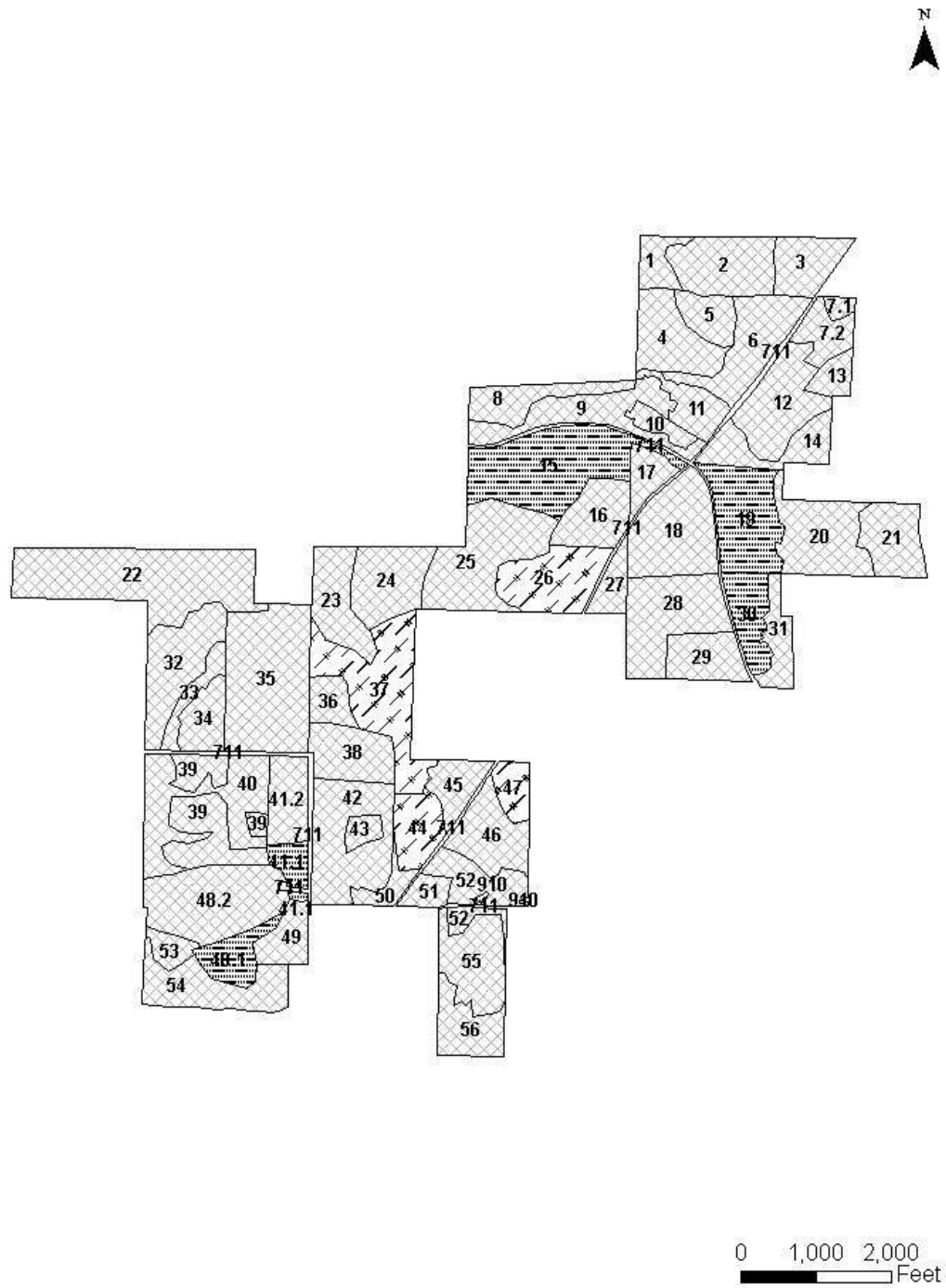


FIGURE 5. – CURRENT MANAGEMENT MAPS

Cattaraugus RA 14

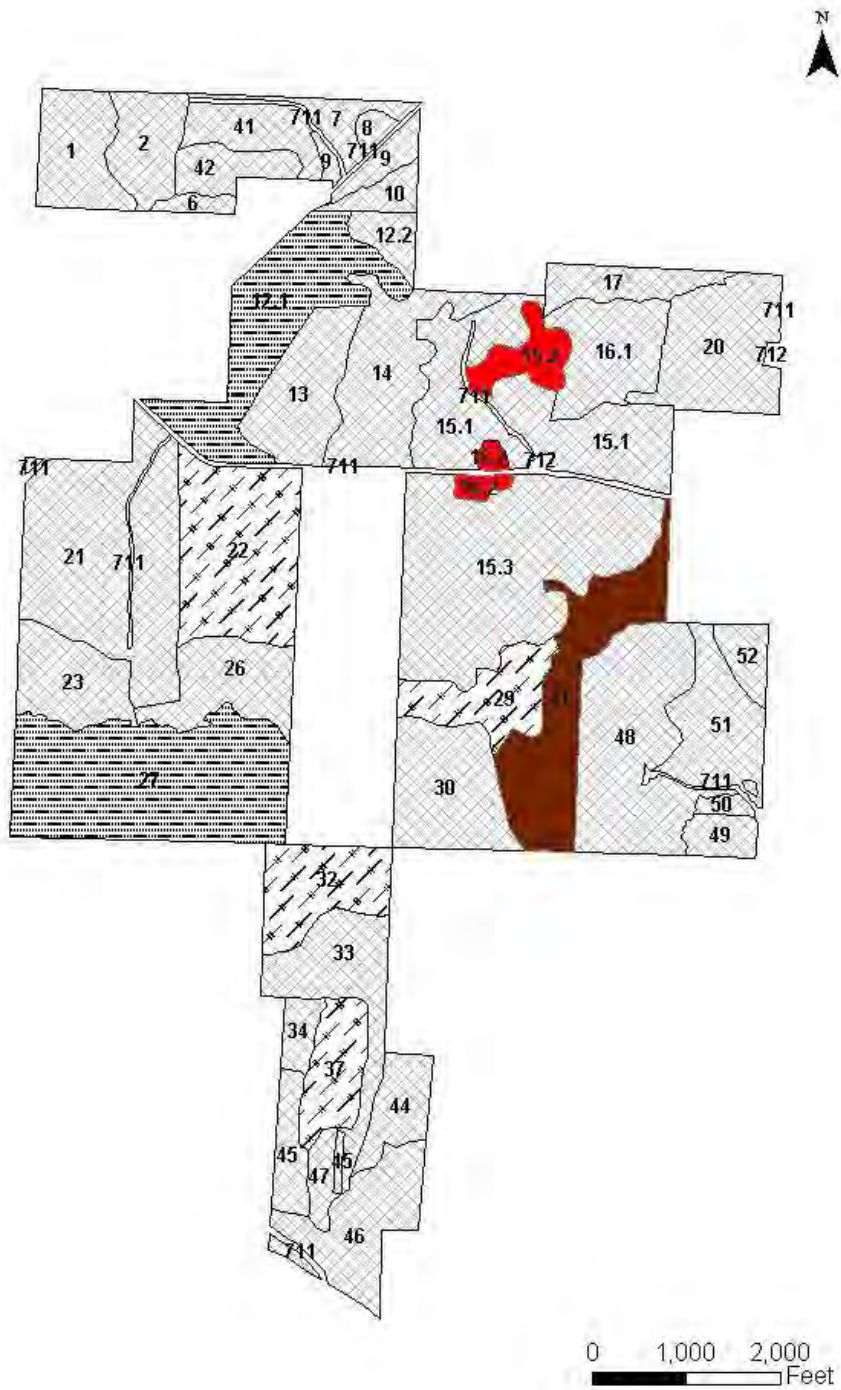


FIGURE 5. – CURRENT MANAGEMENT MAPS

Cattaraugus RA 16

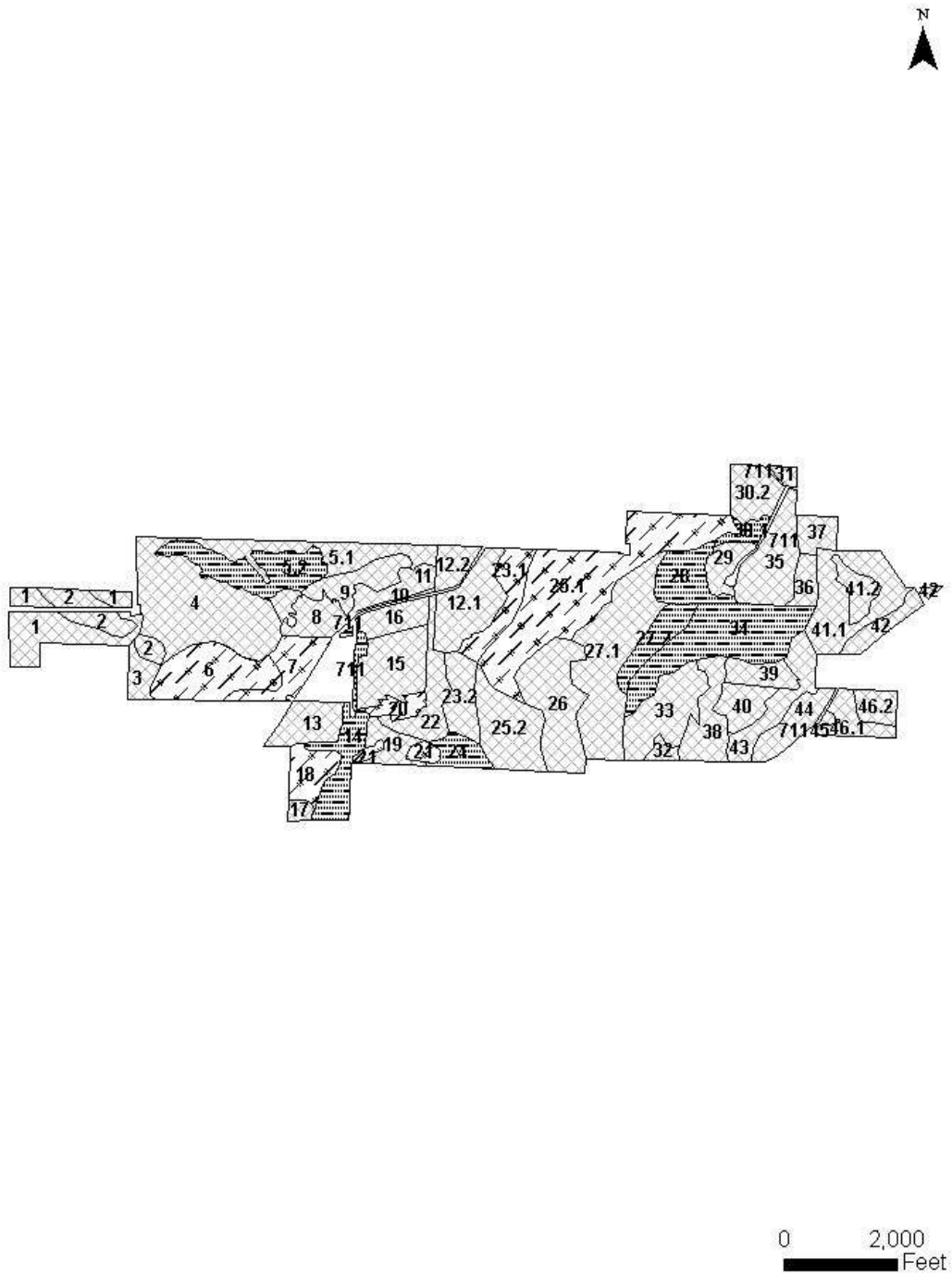


FIGURE 5. – CURRENT MANAGEMENT MAPS

Cattaraugus RA 17

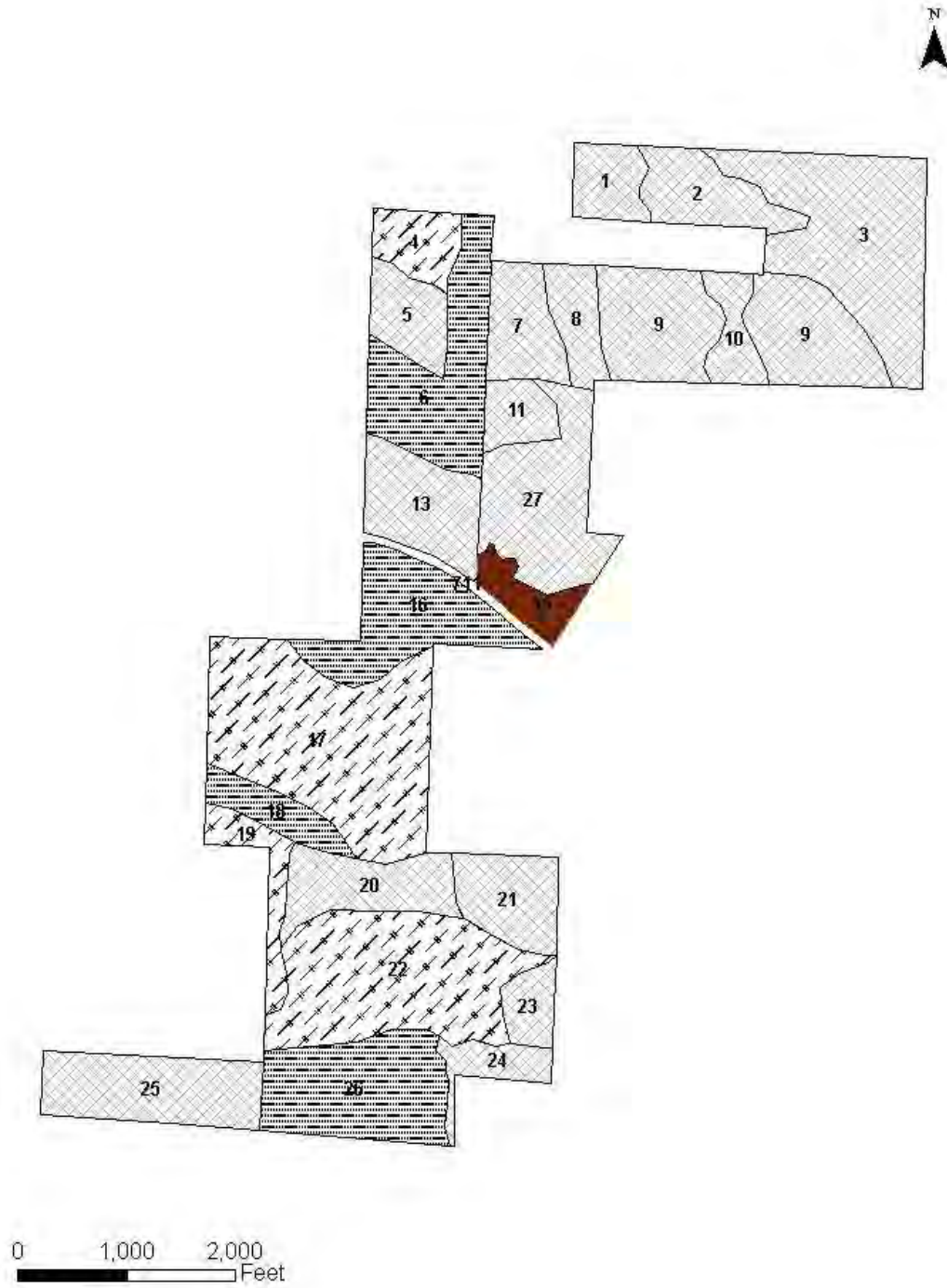


FIGURE 5. – CURRENT MANAGEMENT MAPS

Cattaraugus RA 18

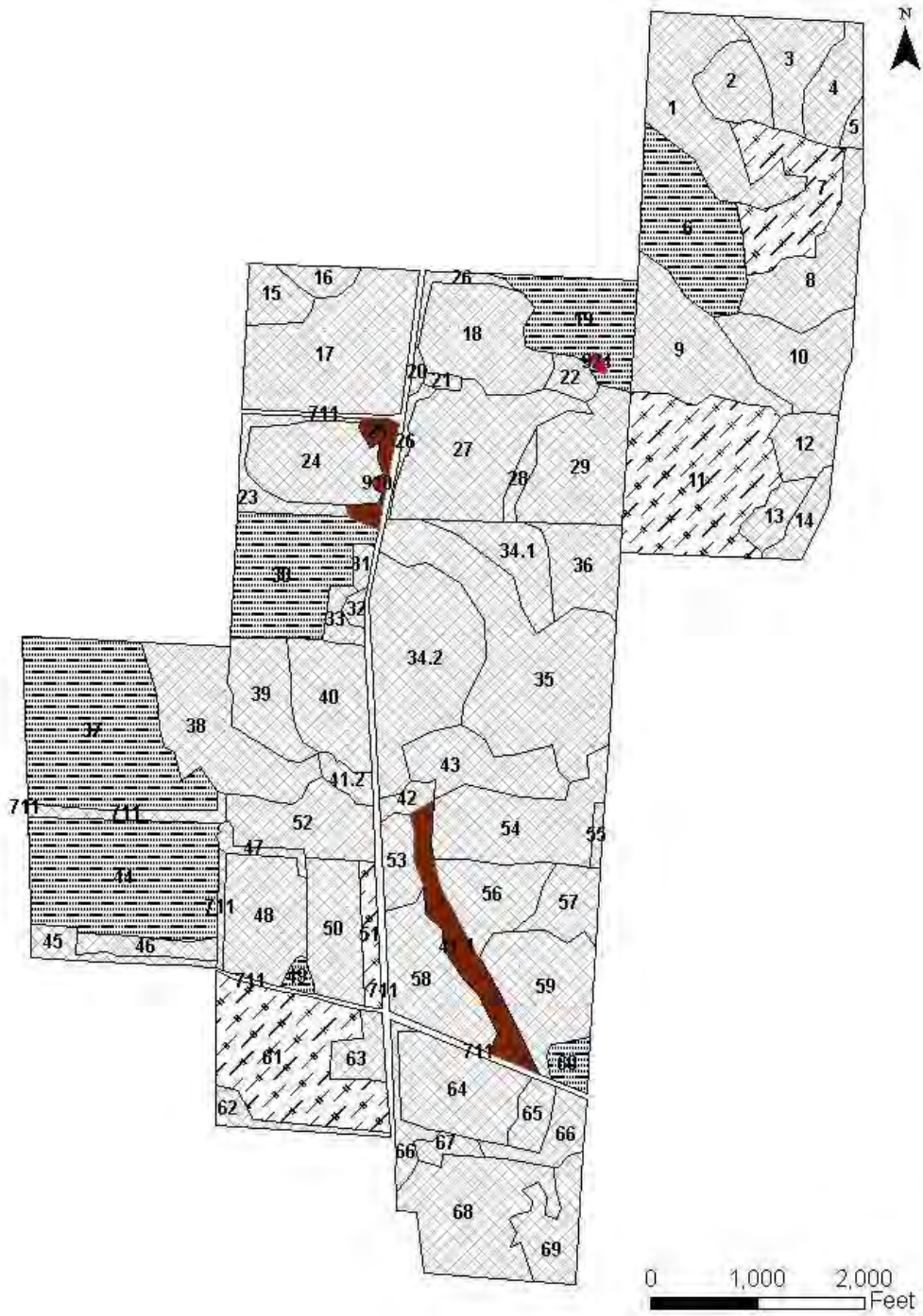


FIGURE 5. – CURRENT MANAGEMENT MAPS

Cattaraugus RA 19

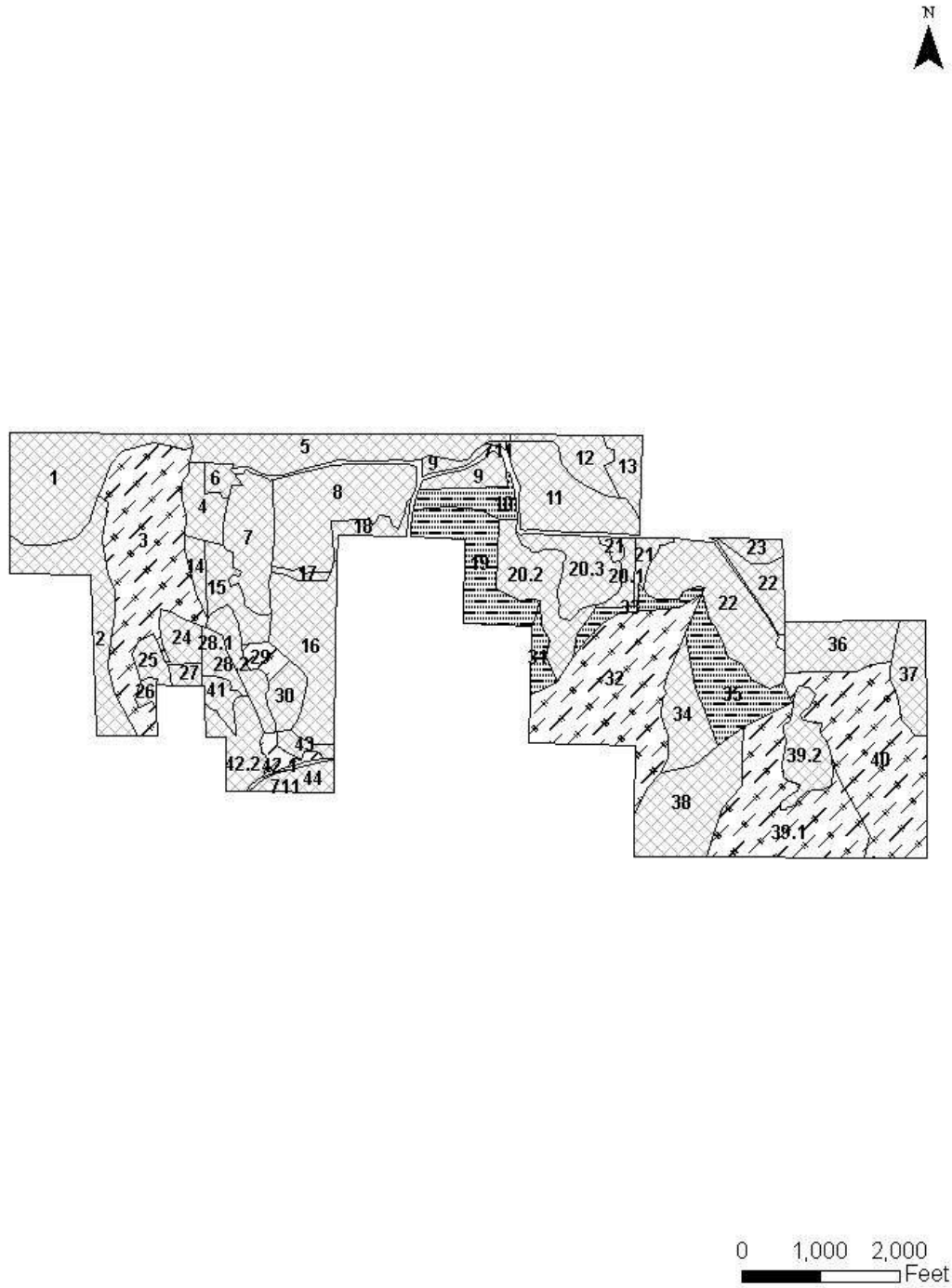




FIGURE 5. – CURRENT MANAGEMENT MAPS

Cattaraugus RA 20

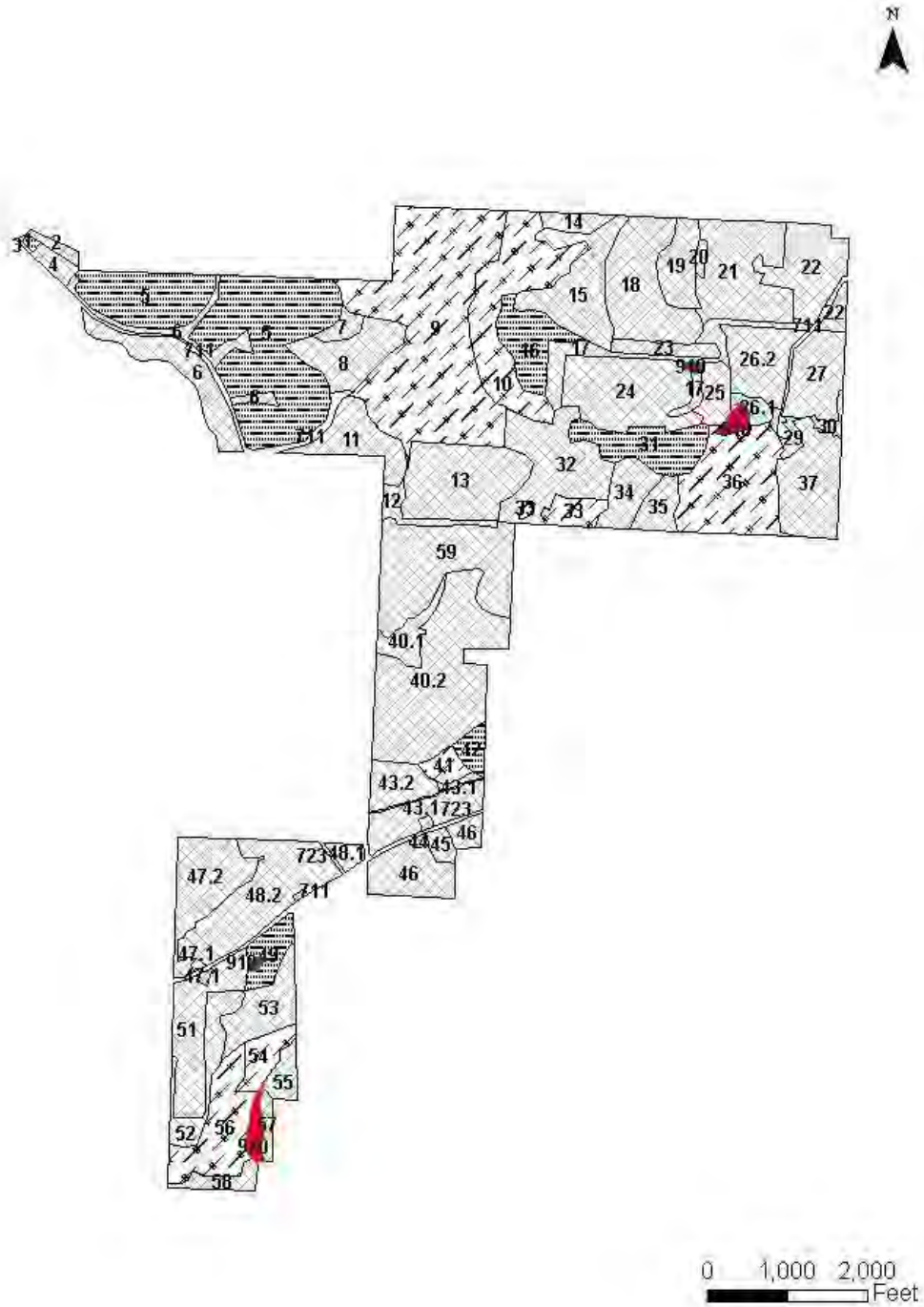


FIGURE 5. – CURRENT MANAGEMENT MAPS

Cattaraugus RA 21

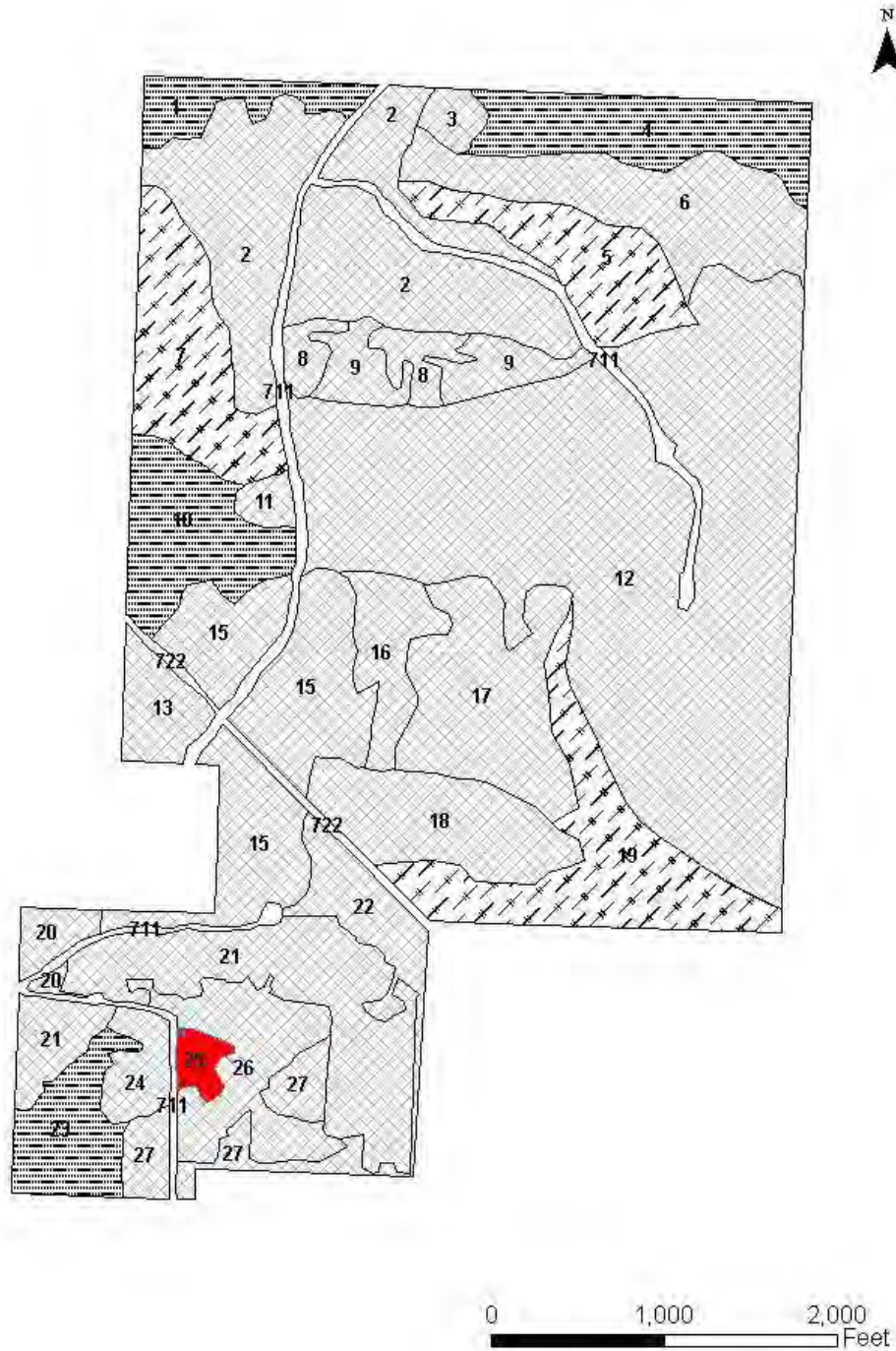


FIGURE 5. – CURRENT MANAGEMENT MAPS

Cattaraugus RA 22

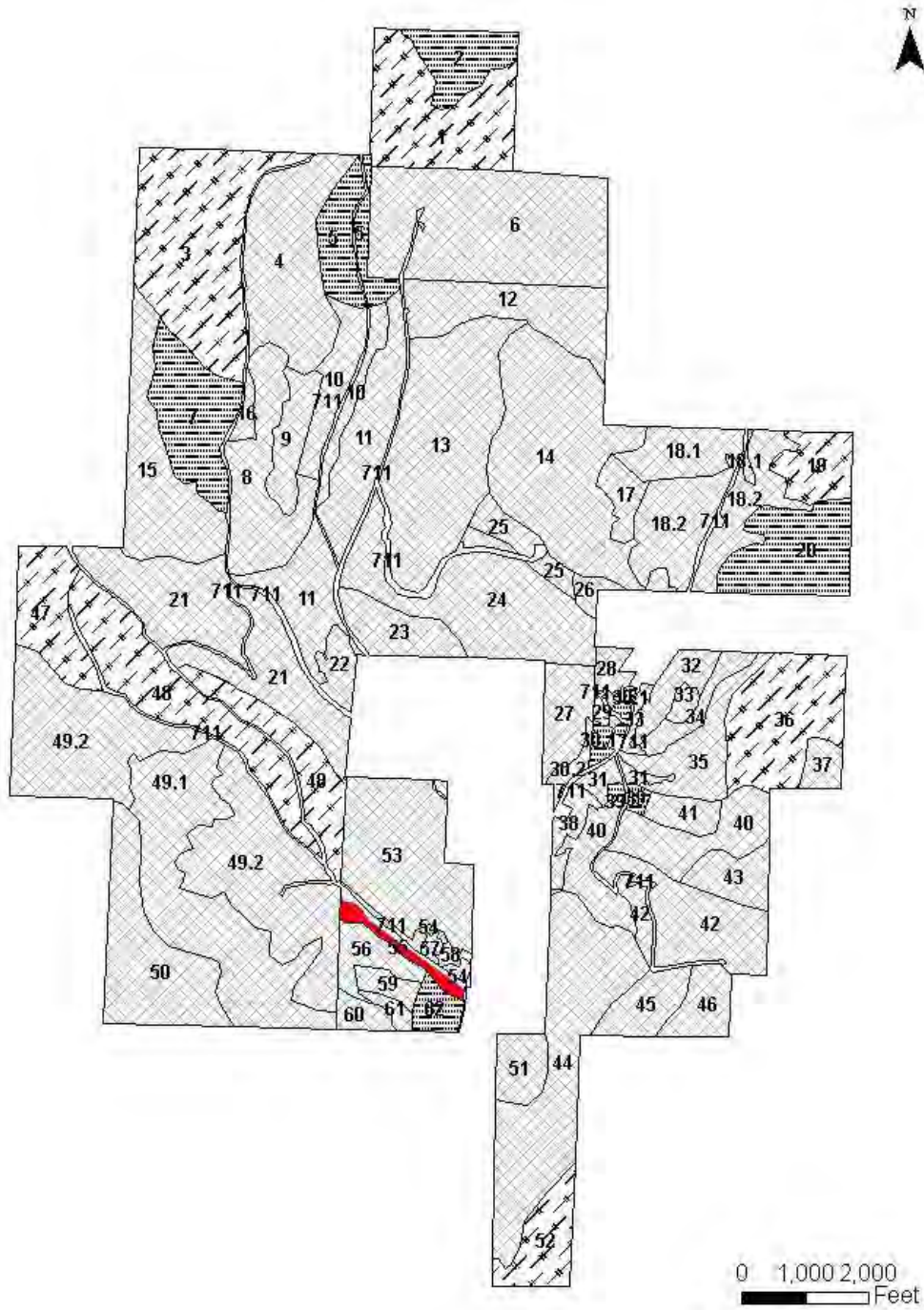
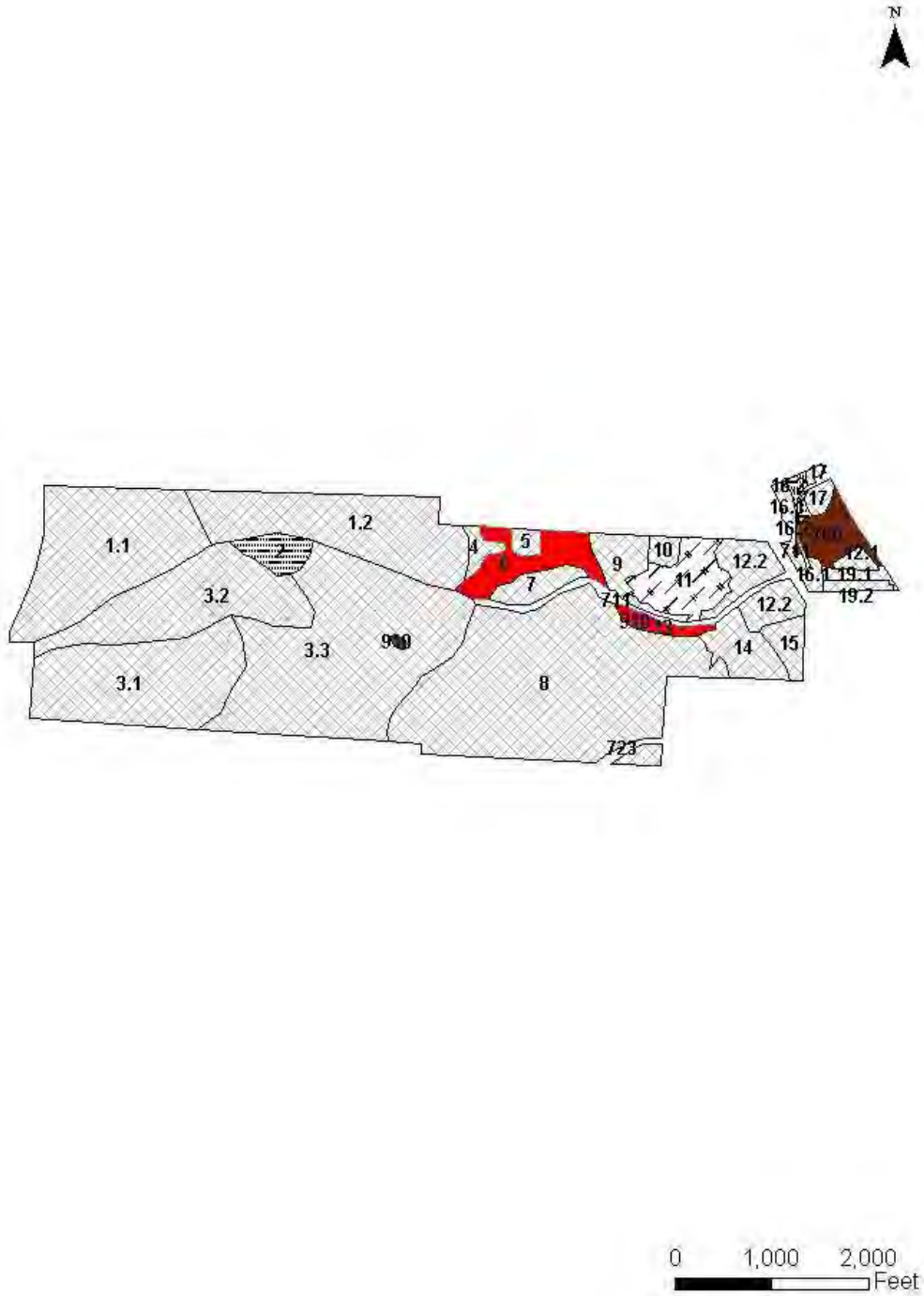


FIGURE 5. – CURRENT MANAGEMENT MAPS

Cattaraugus RA 23



**Figure 6. – Other/Specialized Maps**

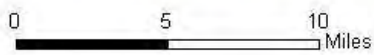
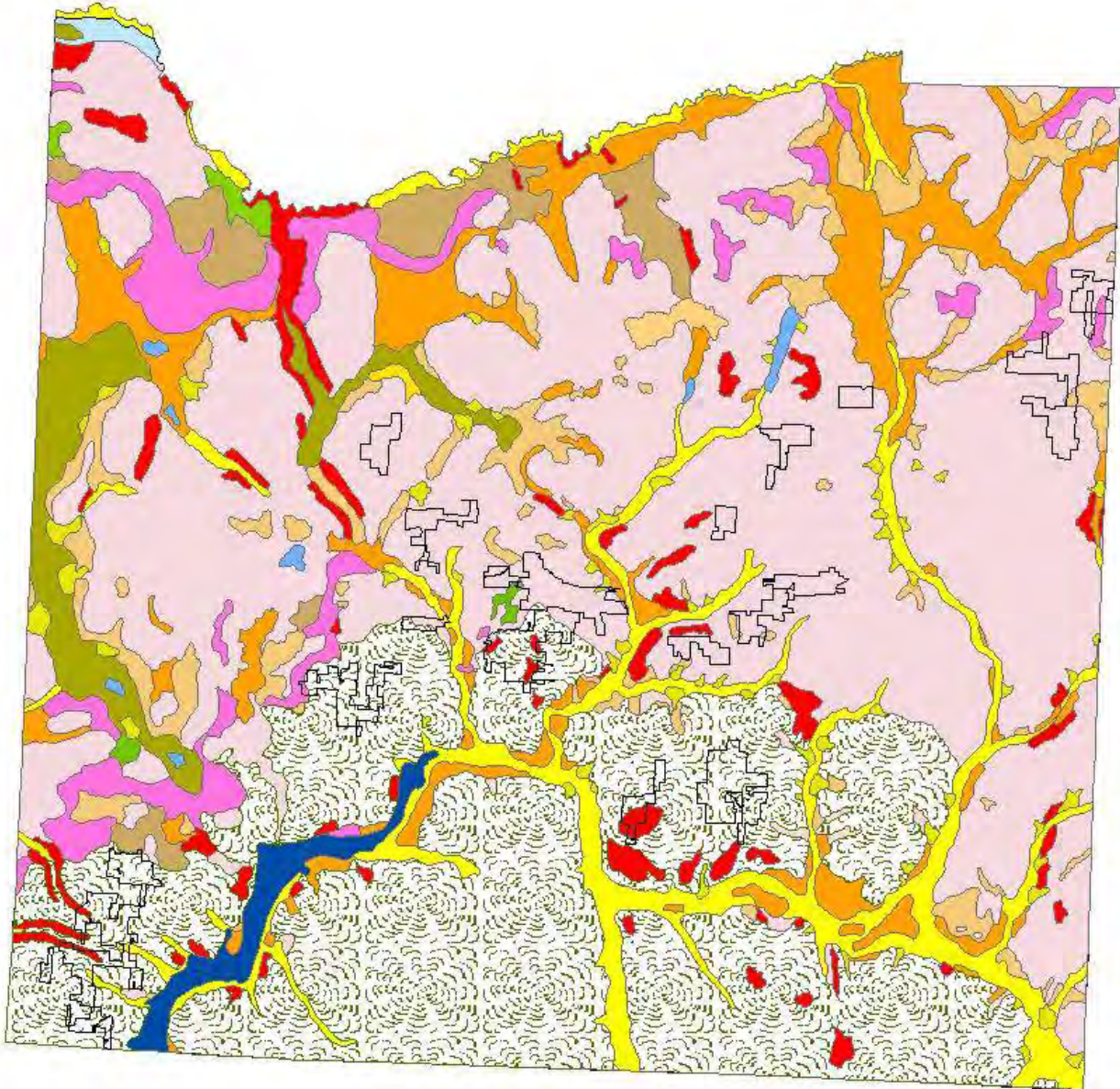
**Cattaraugus County Surficial Geology**

**Legend**

-  State Forest
- Surficial Geology**
- MATERIAL**
-  Recent alluvium
-  Alluvial fan
-  Colluvial diamicton; Unglaciaded
-  Colluvium
-  Fluvial sand and/or gravel
-  Water
-  Kame deposit
-  Kame moraine
-  Lacustrine beach
-  Lacustrine sand
-  Lacustrine silt and clay
-  Outwash sand and gravel
-  Swamp deposits
-  Bedrock
-  Till
-  Till moraine
-  Undifferentiated stratified drift
-  County Boundary for New York State


FIGURE 6. – OTHER/SPECIALIZED MAPS

Cattaraugus County Surficial Geology



**Cattaraugus County Bedrock Geology**

**Legend**

 <all other values>

**MATERIAL**


 Oswayo


 Ellicott


 Machias

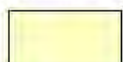
 Gowanda

 Westfield

 Northeast

 Hanover

 Cuyahoga

 Connoquenessing

 Water

 State Forest


 County Boundary for New York State

FIGURE 6. – OTHER/SPECIALIZED MAPS

Cattaraugus County Bedrock Geology

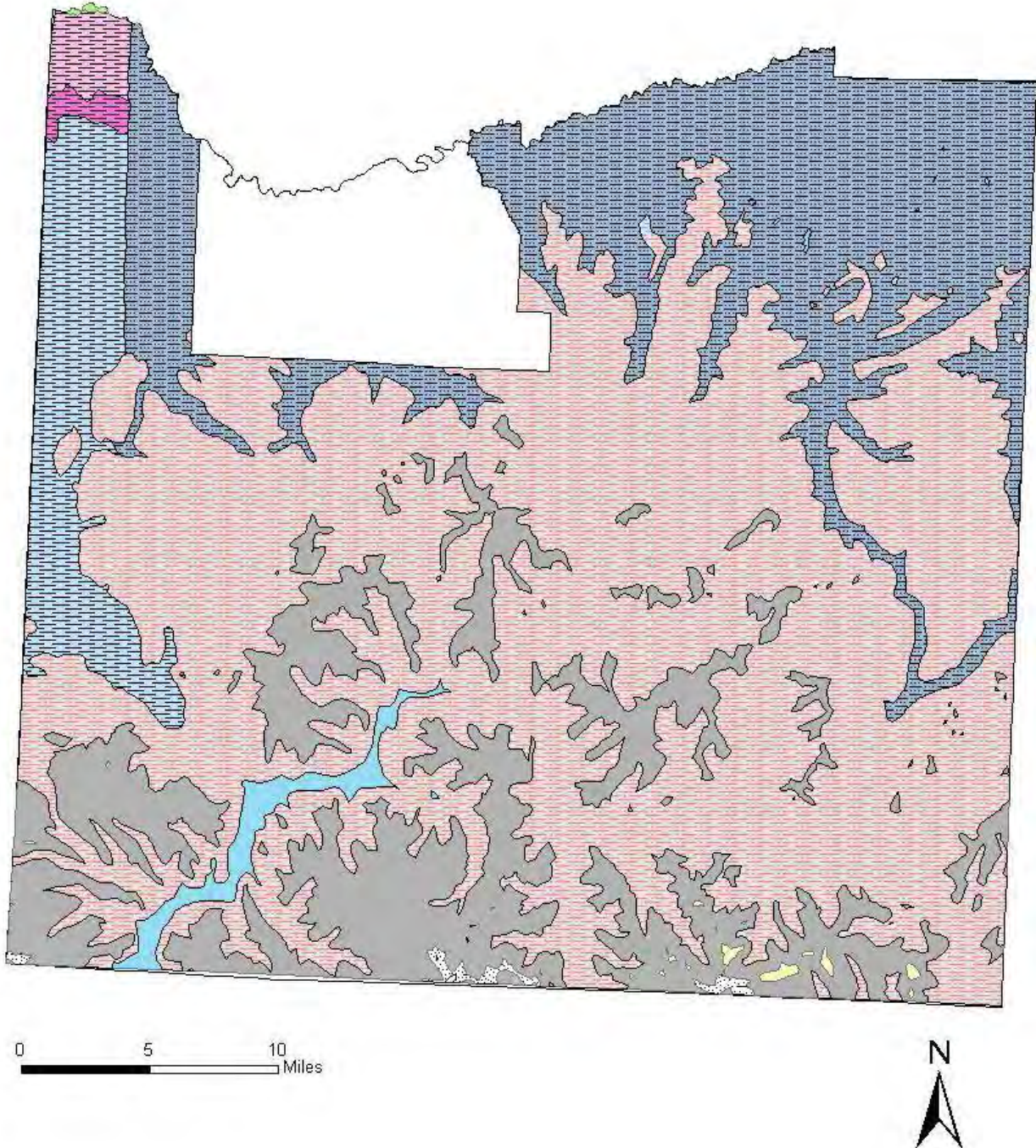
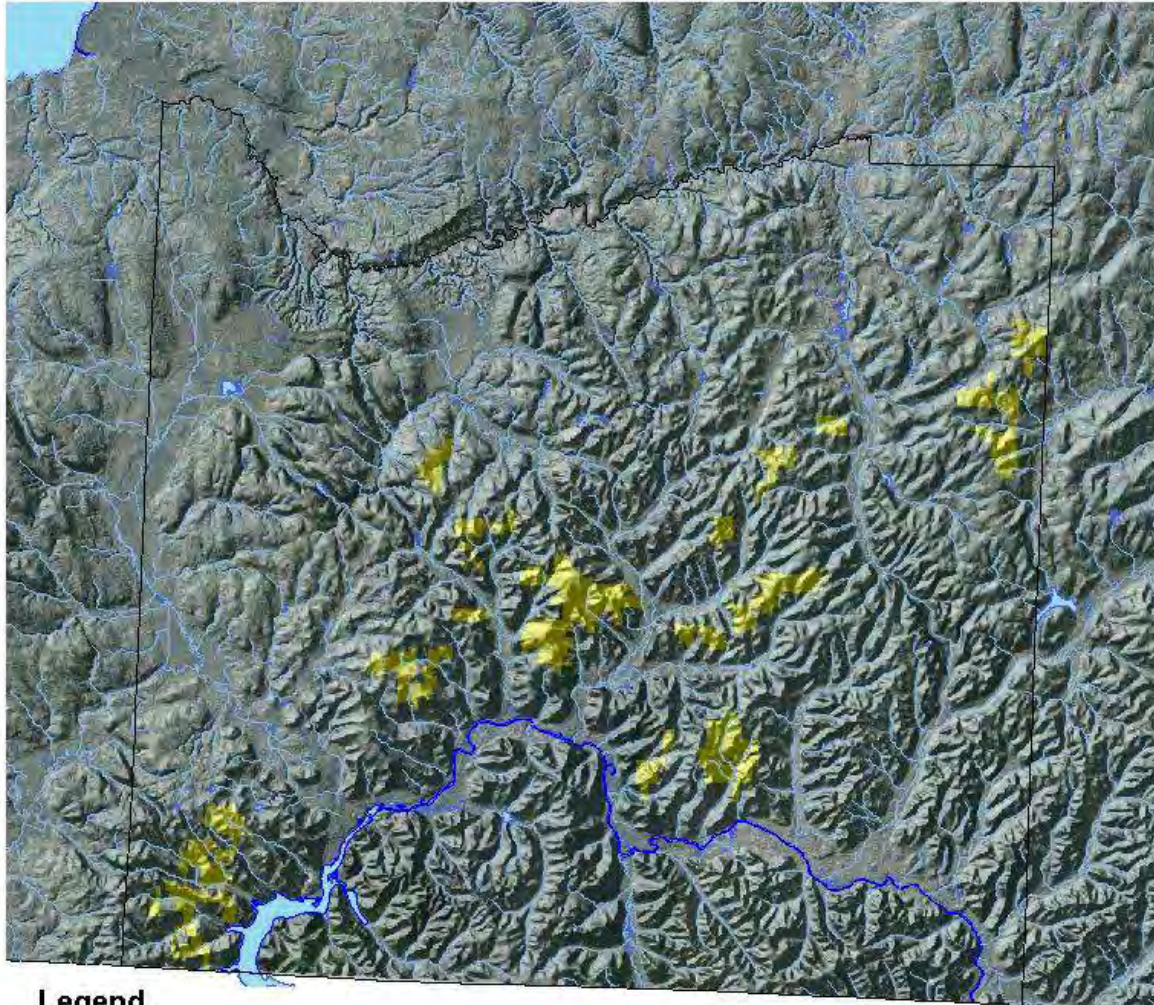








FIGURE 6. – OTHER/SPECIALIZED MAPS

Cattaraugus Shaded Relief



**Legend**

-  County Boundary for New York State
-  Stream, 1:100,000
-  Major Streams, 1:100,000
-  State Forest

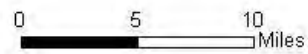


FIGURE 6. – OTHER/SPECIALIZED MAPS

Forest Health Maps

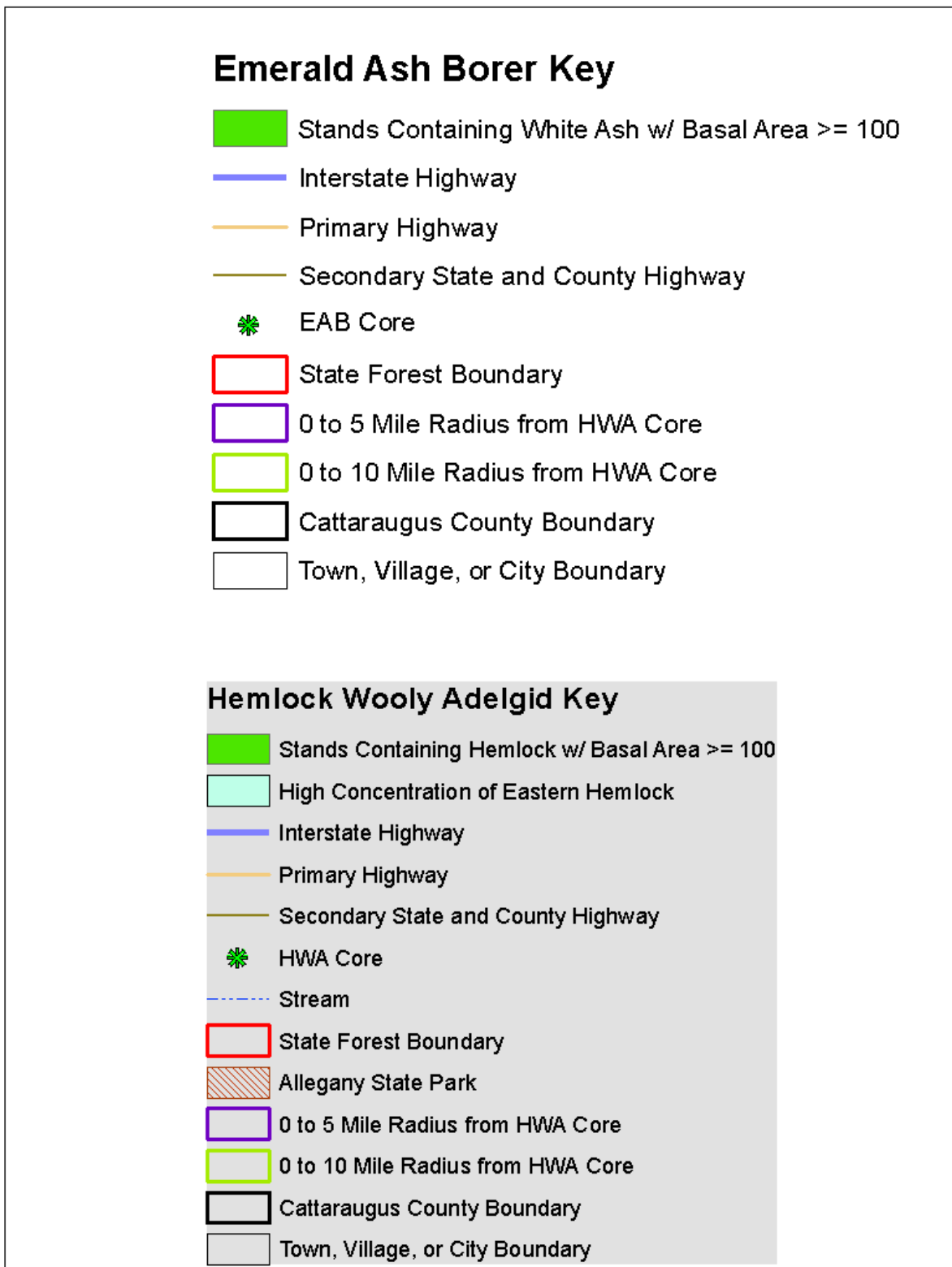


FIGURE 6. – OTHER/SPECIALIZED MAPS

Hardwood Stands with white ash

