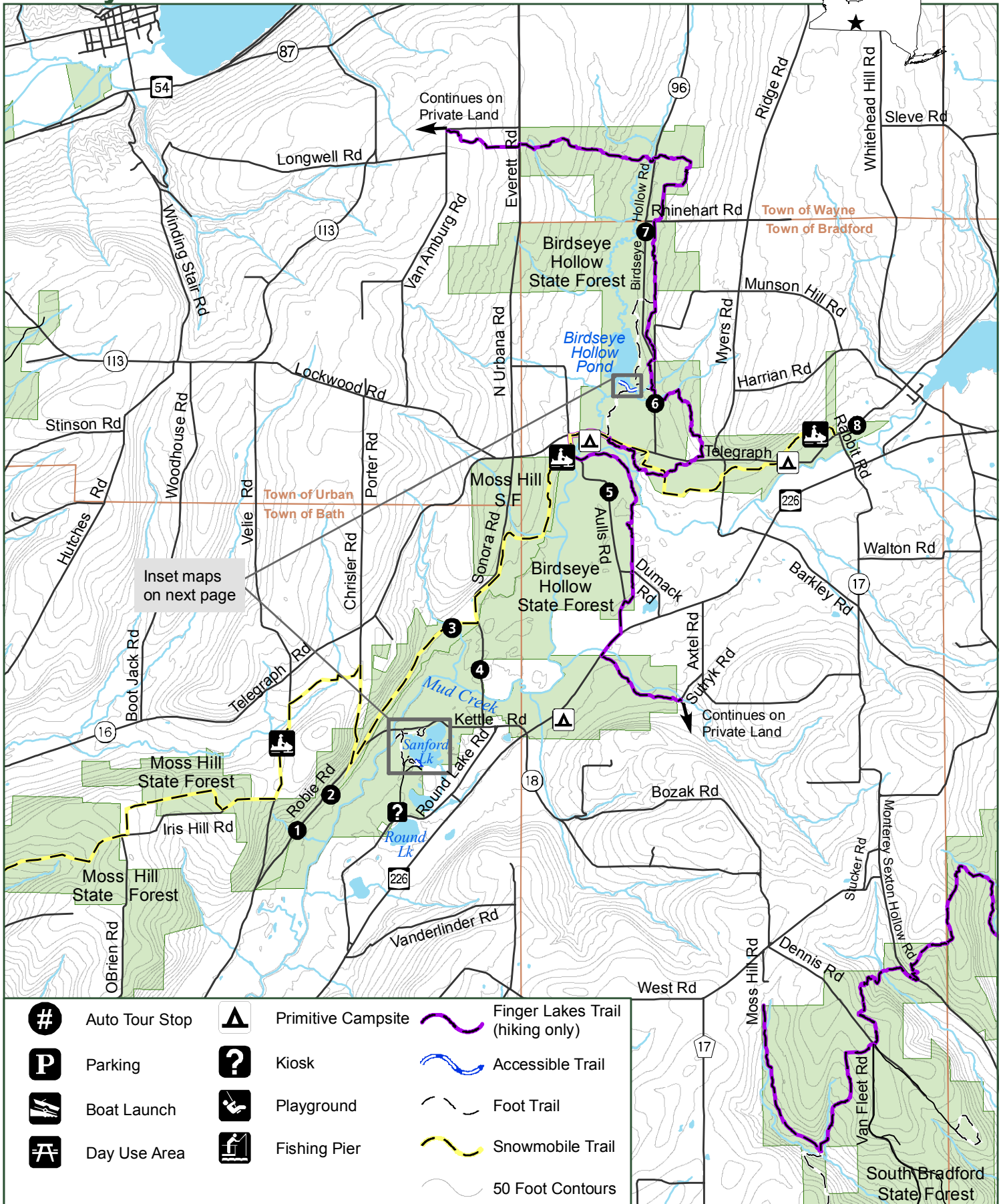


Birdseye Hollow State Forest



Department of Environmental Conservation

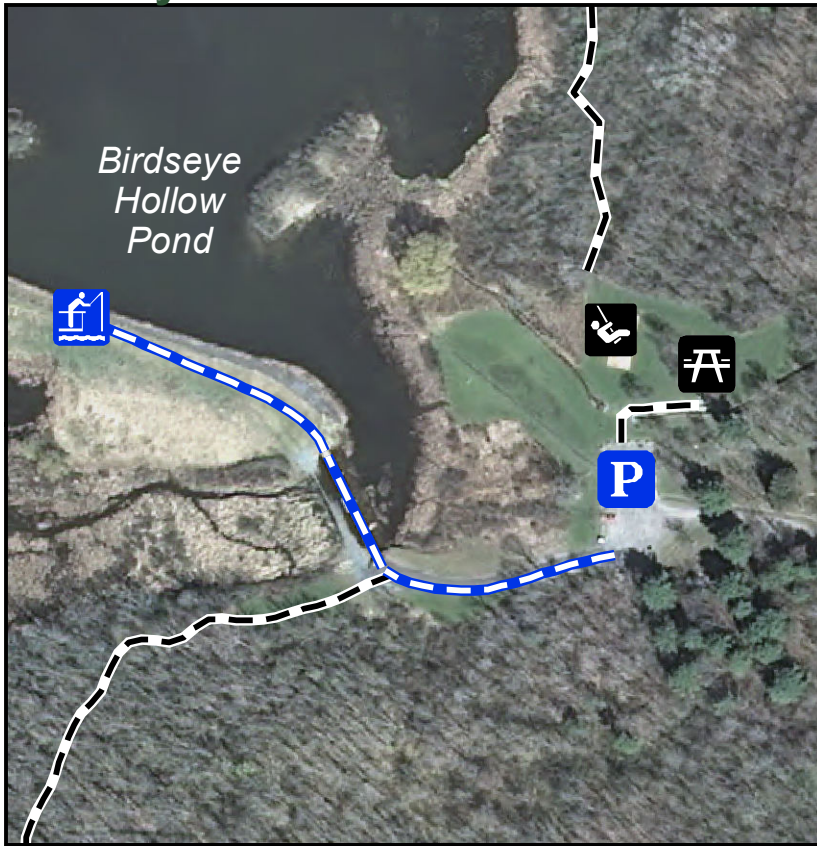
Blue Background Icon Indicates Accessible Element



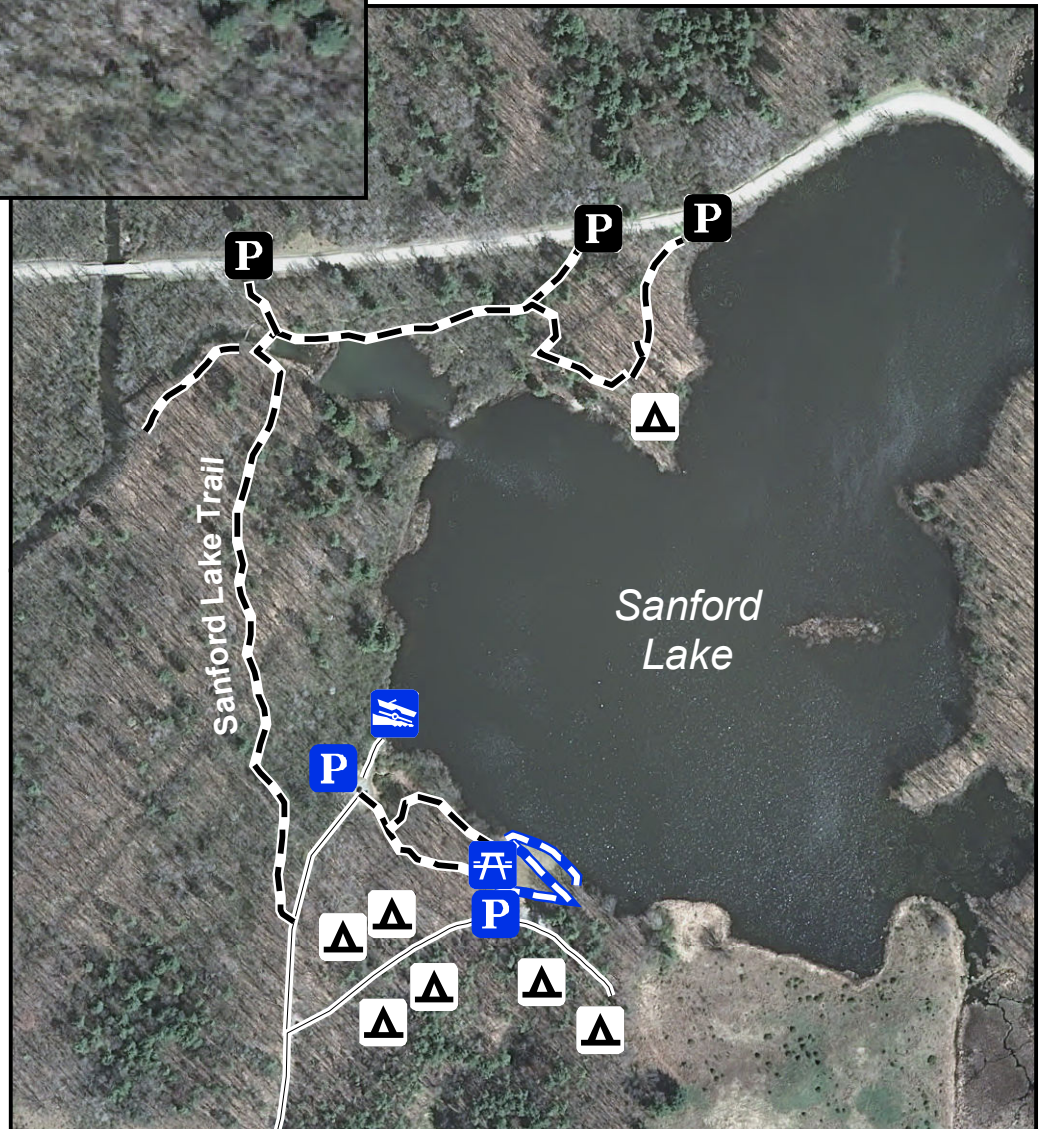
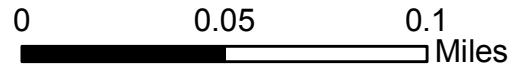
0 0.5 1 2 Miles

Steuben County

Birdseye Hollow State Forest

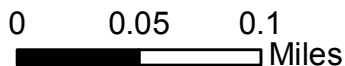


**Birdseye Hollow Park
Inset map**



**Sanford Lake
Recreation Area
Inset map**

From Memorial Day through Labor Day,
a permit is required from the Bath DEC
office to use the designated campsites



Steuben County



Department of
Environmental
Conservation