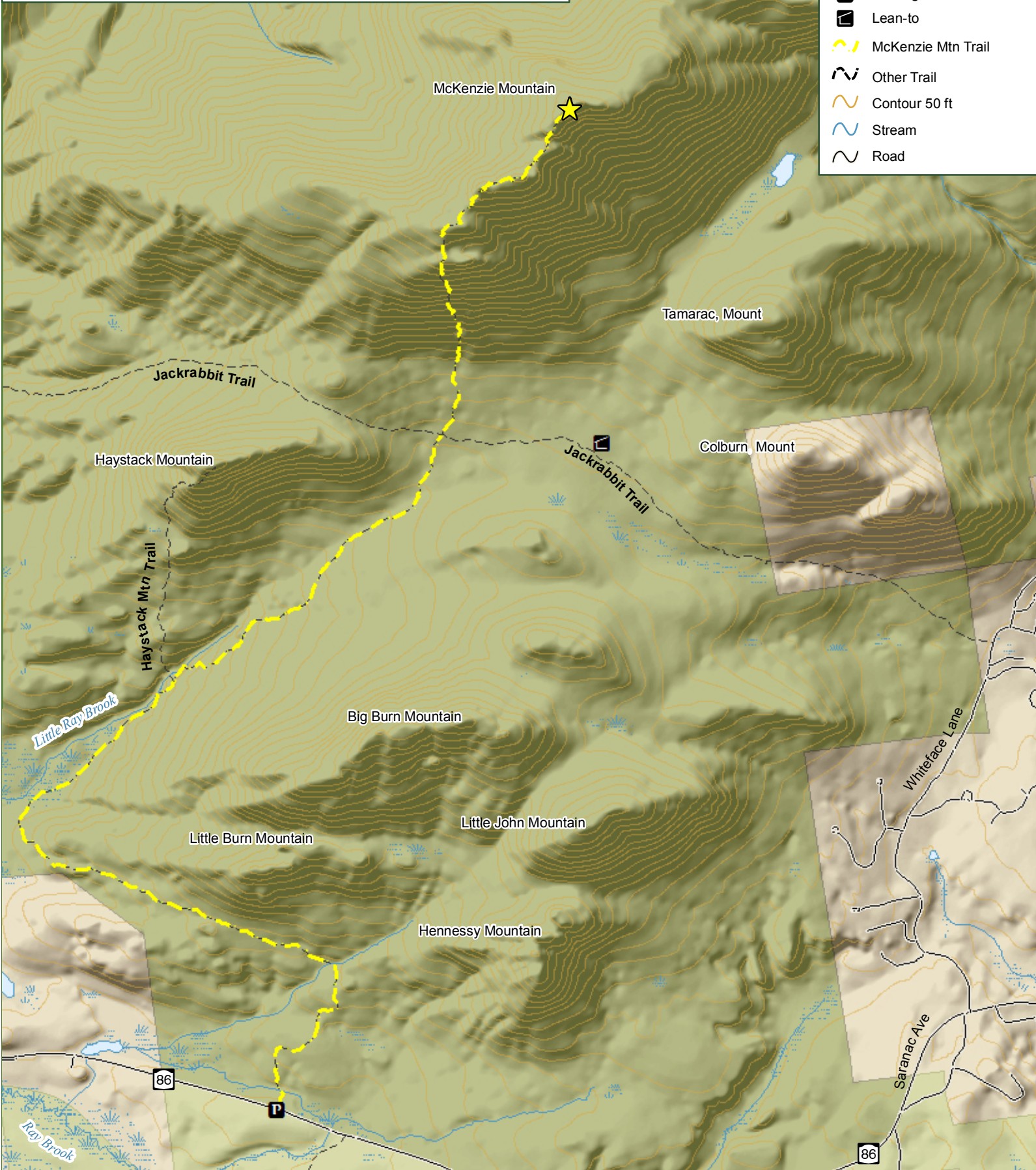


McKenzie Mountain Wilderness - McKenzie Mountain Trails

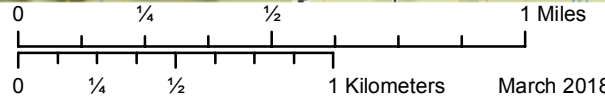
McKenzie Mountain (3,861 feet) summit, which provides amazing views for miles around. The trail extends 5.2 miles from the Ray Brook Trailhead and ascends 2,195 feet to the summit. The first 2.2 miles of the trail is mostly flat and the next 1.4 miles has a moderate ascent, followed by a 0.6-mile steep ascent to the summit.

- McKenzie Mtn Wilderness
- Private Land
- P Parking
- L Lean-to
- McKenzie Mtn Trail
- Other Trail
- Contour 50 ft
- Stream
- Road



Department of Environmental Conservation

Please respect private property. Stay on designated trails
 Practice Leave No Trace Principles
 Emergency contact 518-891-0235



March 2018