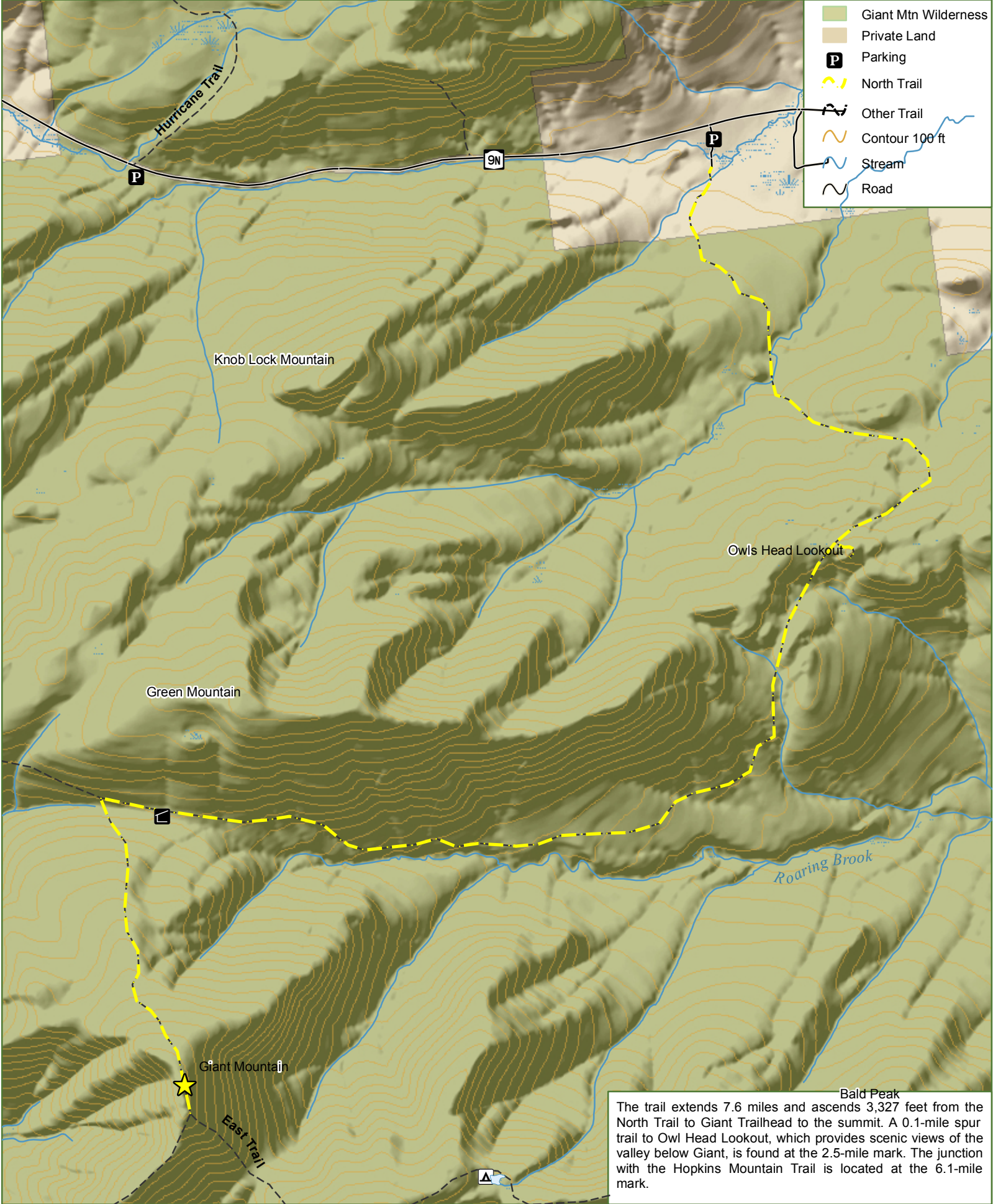


Giant Mountain - North Trail



The trail extends 7.6 miles and ascends 3,327 feet from the North Trail to Giant Trailhead to the summit. A 0.1-mile spur trail to Owl Head Lookout, which provides scenic views of the valley below Giant, is found at the 2.5-mile mark. The junction with the Hopkins Mountain Trail is located at the 6.1-mile mark.