

The New York State Department of Environmental Conservation (DEC) is seeking public input on the development of a draft Recreation Management Plan (RMP) for the South Colton Tract Conservation Easement

RMP Development Process

- ❖ RMPs document natural and man-made resources on conservation easements (CEs) and are used in planning public recreation consistent with the protection of natural resources and the terms agreed upon in the conservation easement.
- ❖ A draft South Colton Tract RMP will be shared for public comment when completed.

Property Overview

- ❖ The South Colton Conservation Easement (SCCE):
 - is a privately-owned CE encompassing approximately 1,725 acres in the town of Colton, St. Lawrence County;
 - contains commercially managed forestland, comprised primarily of a northern hardwood forest and multiple small streams and wetlands, including portions of the Dead Creek complex, and;
 - shares approximately 3,100 ft. of boundary with the High Flats State Forest off the Donovan Road in the Town of Colton.

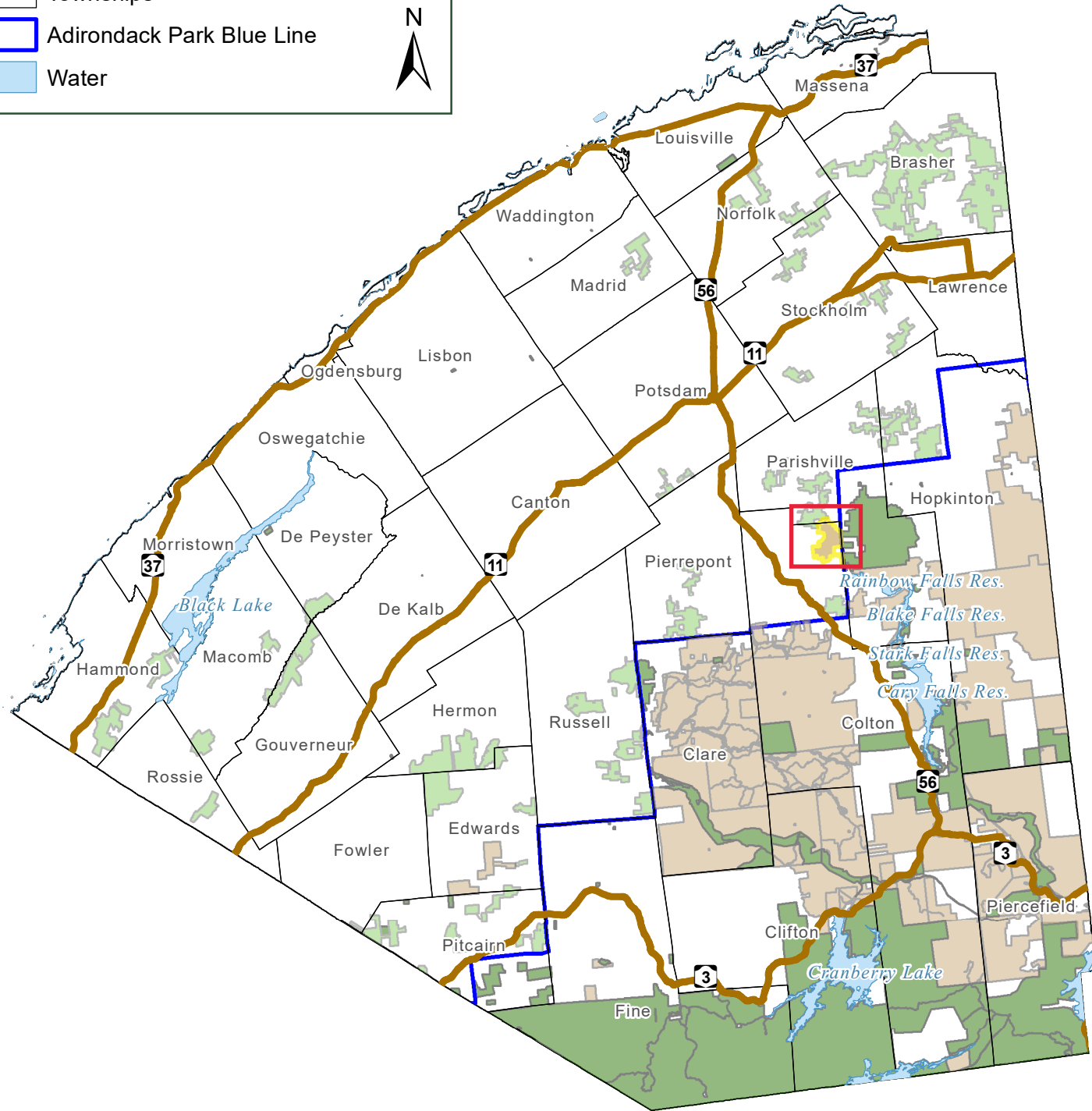
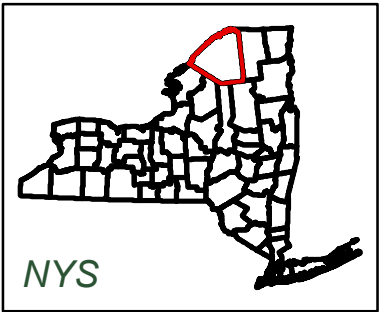
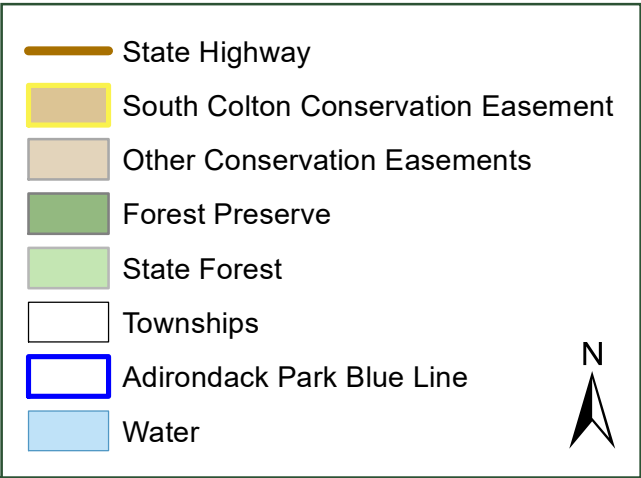
Public Rights and Access

- ❖ The public can currently access the SCCE by non-motorized means from the Morgan Road in South Colton and via a trail on the High Flats State Forest parcel off the Donovan Road, also in the town of Colton.
- ❖ The public can currently access the SCCE by snowmobile, on designated snowmobile trail S86A.
- ❖ Members of the public with a Mobility Access Permit for People with Disabilities (MAPPWD) may access the property with an ATV along a MAPPWD route, which begins on High Flats State Forest.
- ❖ Under the terms of the CE, DEC owns the rights to maintain roads and trails for motorized use on the property and to permit public hunting, fishing, trapping, camping, paddling, cross-country skiing, and horseback riding.
- ❖ Public motorized access from the Morgan Road is not currently possible. A privately owned parcel without public rights lies between the town owned parcel and SCCE.
- ❖ Based upon these rights and suggestions elicited from the scoping session, specific facilities and recreation opportunities will be identified in the draft RMP.

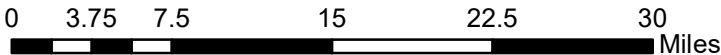


South Colton Conservation Easement

St. Lawrence County



Department of
Environmental
Conservation



Date:
12/5/2022

South Colton Conservation Easement

Existing Facilities

