

**WORK PLAN FOR
PHRAGMITES AUSTRALIS (COMMON REED GRASS)
MANAGEMENT ON FOREST PRESERVE IN THE ADIRONDACK PARK
TO BE CONDUCTED BY
THE ADIRONDACK PARK INVASIVE PLANT PROGRAM**

Applicant Information

Name: The Nature Conservancy acting through its Adirondack Park
Invasive Plant Program (APIPP)

Mailing Address: 8 Nature Way | PO Box 65
Keene Valley, NY 12943

Telephone Number: (518)-576-2082

Contact person: Rebecca Bernacki

E-mail Address: rebecca.bernacki@tnc.org

The Adirondack Park Invasive Plant Program (APIPP) serves as the Adirondack Partnership for Regional Invasive Species Management (PRISM), one of eight partnerships across New York. APIPP is hosted by The Adirondack Chapter of The Nature Conservancy and receives financial support from the Environmental Protection Fund administered by New York State Department of Environmental Conservation.

Species Specific Language

Target Species Impacts and Concerns

Common reed grass is ranked very high (Relative Score = 92.00) under New York's Non-Native Plant Species Assessment Process. Areas impacted by common reed grass range from lake/pond edges to right-of-way shoulders. Forested and emergent wetlands often provide the best conditions for invasion by this species. If infestations are not controlled, and suitable habitat is present, this species will spread vegetatively by rhizome growth and/or plant fragments to create a monotypic plant community in the impacted area. This can result in an overall decrease in the native biodiversity and ecological quality of the invaded habitat. Untreated infestations will continue to serve as source populations for future invasion. Due to the number of high-quality wetland ecosystems within the Adirondack Park, this species poses a very significant risk if left unaddressed.

Treatment Methods

Control Method - foliar spray/clip and drip with glyphosate and/or imazapyr based herbicide

Herbicide Selected for Use - RoundUp Custom (EPA Reg. No. 524-343), Rodeo (EPA Reg. No. 62719-324), Accord XRT-II (EPA Reg. No. 62719-556), Arsenal Powerline (EPA Reg. No. 241-431) and/or Arsenal Applicators Concentrate (EPA Reg. No. 241-299)

Proposed Treatment Methods

Clip and drip

The clip and drip method will be used to treat stems that are within 3-feet of desirable native vegetation. This will create a "buffer zone" around desirable vegetation to reduce the likelihood for unintentional damage from subsequent foliar spray treatments. Clip and drip will also be used to create spray lanes through the interior of the infestation if the site is deemed too large or dense to be effectively treated by foliar spray from its exterior edge. Parallel spray lanes are cut through the heart of the infestation spaced 6-8 feet apart. Each stem that is cut to create the spray lanes will receive a clip and drip treatment with herbicide. Spray lanes allow the applicator easier access to the infestation and thereby promote better herbicide spray coverage and treatment efficacy. Clip and drip treatments will utilize 5ml of a 50% glyphosate solution, per the label recommendation.

Foliar Spray

The majority of the infestation will be treated via foliar spray with a 1% solution of glyphosate-based or 0.5% imazapyr-based herbicide herbicide, in accordance with label recommendations. A backpack or handheld sprayer will be used to administer a spray-to-wet application to the foliage of all untreated plants. The foliar spray method is useful in covering large or dense stands of vegetation efficiently but presents an increased likelihood for off-target impacts via herbicide spray drift. To reduce the chance of off-target impacts, foliar spray applications will be conducted during periods of little to no wind using an appropriate droplet size and spray

pressure. A marking dye will be used to identify which plants have already been sprayed to prevent over application.

General Safety Procedures

Herbicide applications will follow all label precautions. Necessary personal protective equipment will be worn.

Assessment of Treatment Alternatives

Cutting/Mulching – Cutting or mulching common reed grass is not recommended since plant fragments as small as 1 cm have the capability to re-sprout and form a new infestation.

Pulling - Hand pulling is not an option due to the size of the impacted area, the sites soil characteristics, and the number of plants present.

Herbicide – A treatment of glyphosate- or imazapyr-based herbicide is currently the best option due to the size of the infestations and the effectiveness of the clip and drip and foliar spray methods.

Matting - Covering the site with black plastic is not an option due to the size of the infested area and/or the remoteness of the sites.

Excavation - This method is not currently a viable option due to its cost and/or the remoteness of the sites.

Timing and Schedule

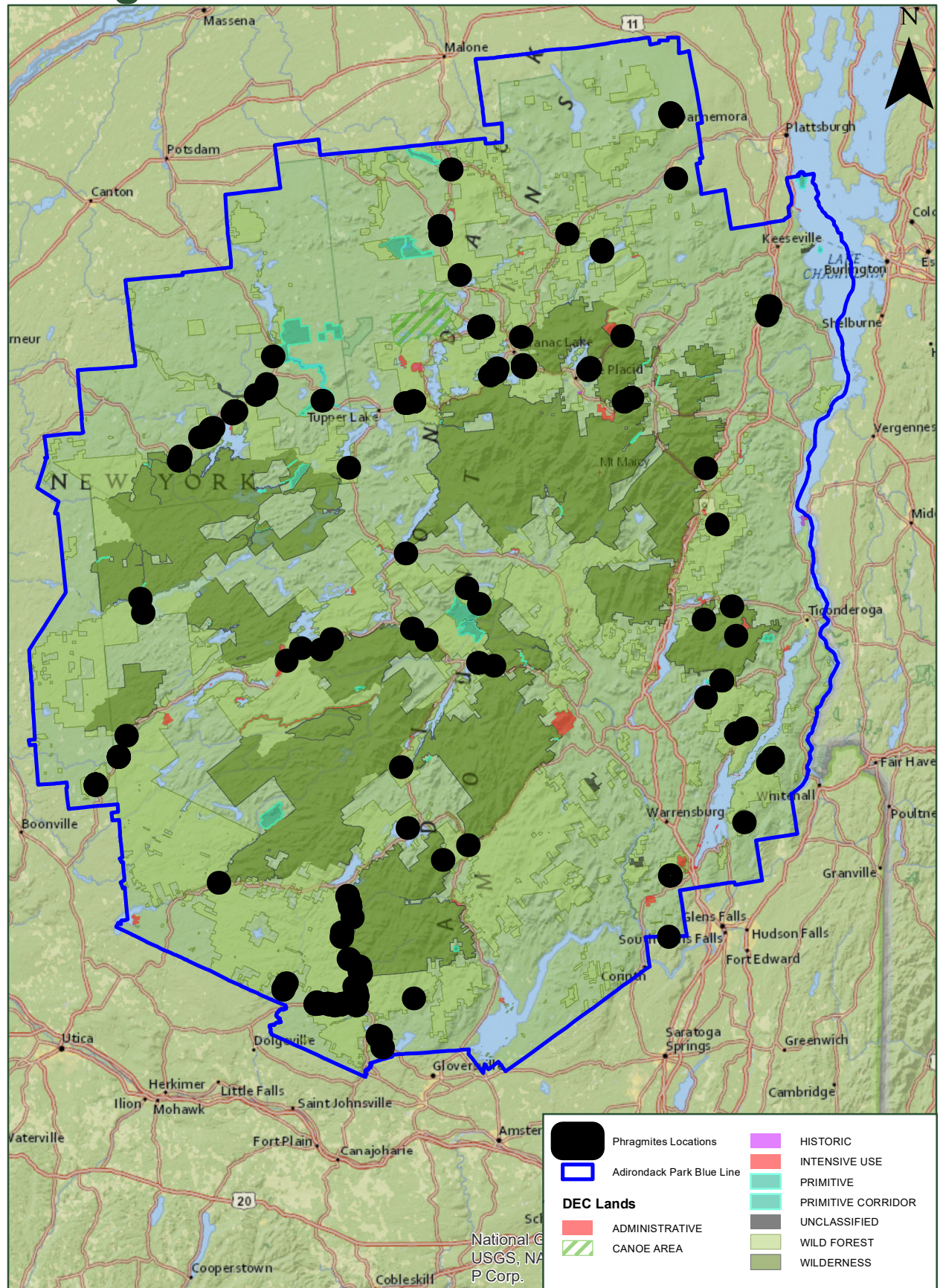
Timeframe by Which the Work Will Be Undertaken and Completed

Treatments will be completed between July and September, when the plants are nearing full growth and flower, but at least three weeks before the first hard killing frost. At that time, the plants are actively transporting nutrients to their root system in preparation for winter dormancy. Treating during the flowering period helps facilitate the translocation of herbicide deeper into the plants root system resulting in a more effective treatment. All new infestations that establish in future years due to fragmentation, rhizomatic growth, or seed dispersal from these parent patches will be treated in a similar manner. Work will be considered complete when target invasive plants are no longer observed. At this point, sites will transition from the treatment phase to the monitoring phase as outlined below.

Schedule of Future Work/Monitoring Provisions to Determine the Effectiveness of the Management Action

Sites that no longer have target species present will be inspected annually for at least three consecutive years. If target species are detected during monitoring visits, follow-up treatment will be performed, and annual inspections will occur for at least three additional consecutive years. A photographic record and GPS data will be collected to document management progress of the site over time.

Phragmites



0 10 20 40 Miles

0 15 30 60 Kilometers

National Geographic
USGS, National Park Corp.

SPECIES-SPECIFIC COMBINED WORK PLAN FOR *PHRAGMITES AUSTRALIS* (COMMON REED GRASS)

**SITE LIST
SHEET 1 OF 17**

GLOBALID (FOR APIPP USE)	SITE NAME (FOR APIPP USE)	SPECIES	DEC REGION	STATE LAND UNIT	COUNTY	TOWN	LATITUDE*	LONGITUDE*	ACRES AT MOST RECENT SURVEY	YEAR OF MOST RECENT SURVEY	NATURAL HERITAGE REVIEW	2022 PRIORITY FOR TREATMENT	DATE OF WORK PREVIOUS PLAN APPROVAL
{158509E1-11F1-46DB-8289-D0E4DD7B5CFE}	Shaw Pond, across from parking lot, near ref. marker #2201-1117	<i>Phragmites australis</i>	5	Blue Mountain Wild Forest	Hamilton	Long Lake	43.97400	-74.39972	0	2022	N/A	Yes Target invasive no longer observed but site will be surveyed and treated if reemergence occurs	7/1/2022
{02127572-9485-4627-82C4-47EDB2BE547C}	by Northville Lake Placid trailhead, across from ref. marker #2209-1285	<i>Phragmites australis</i>	5	Blue Mountain Wild Forest	Hamilton	Indian Lake	43.84175	-74.38572	0.00003	2022	N/A	Yes	7/1/2022
{31517EC0-1F2C-46EF-A8CF-F0BA8B054995}	Shadow Lake Dam	<i>Phragmites australis</i>	5	Blue Mountain Wild Forest	Essex	Minerva	43.91188	-74.25142	0.012	2021	N/A	Yes	7/1/2022
{CAB9E511-A40C-4474-B781-8E2379B0740A}	Before 45 mph sign	<i>Phragmites australis</i>	5	Blue Mountain Wild Forest	Hamilton	Indian Lake	43.821545	-74.350064	0.287	2022	N/A	Yes	NA
{9A914CEA-2EA8-4B3A-B449-4E101476330C}	In wetland off of parking area extending onto Giant Mountain Wilderness Area	<i>Phragmites australis</i>	5	Boquet River Primitive Area	Essex	Elizabethtown	44.11780	-73.66532	0	2022	N/A	Yes Target invasive no longer observed but site will be surveyed and treated if reemergence occurs	7/1/2022
{1E20A763-D75A-449A-AD67-FCDF83EB2053}	Burnt Hill state forest parking - entrance to parking area	<i>Phragmites australis</i>	5	Burnt Hill State Forest	Clinton	Saranac	44.62897	-73.72776	0.003	2021	N/A	Yes	7/1/2022
{14B59CBE-DD34-447C-9005-7954B9E80441}	Caroga Lake - end of the break wall near the beach	<i>Phragmites australis</i>	5	Caroga Lake Campground	Fulton	Caroga	43.12490	-74.47488	0.032	2022	N/A	Yes	7/1/2022
{69B6AA0E-21D1-4644-B9EA-E0939DD18BEA}	Caroga Lake - Clearing across road from fire pit dumpsite	<i>Phragmites australis</i>	5	Caroga Lake Campground	Fulton	Caroga	43.12346	-74.46828	0.093	2022	N/A	Yes	7/1/2022
{BC154786-36FC-47E5-9839-FB94B162FA3C}	Caroga Lake - at culvert near boat launch	<i>Phragmites australis</i>	5	Caroga Lake Campground	Fulton	Caroga	43.12313	-74.47363	0.0003	2022	N/A	Yes	7/1/2022
{B6E3AFC7-DB6D-47EB-A0B6-93E6B39251A7}	near ref. marker #7102-1179	<i>Phragmites australis</i>	5	Chazy Highlands State Forest	Clinton	Dannemora	44.74175	-73.73545	0.022	2022	N/A	Yes	7/1/2022
{87BFB273-5051-47C6-8DED-399FB0198CEC}	Just before parking area sign	<i>Phragmites australis</i>	5	Chazy Highlands State Forest	Clinton	Dannemora	44.73929	-73.73414	0	2022	N/A	Yes Target invasive no longer observed but site will be surveyed and treated if reemergence occurs	7/1/2022
{301B5204-4DC2-4B32-983A-6C4688DC2272}	Just before utility pole E34 - 499	<i>Phragmites australis</i>	5	Chazy Highlands State Forest	Clinton	Dannemora	44.74096	-73.73486	0.001	2022	N/A	Yes	7/1/2022

SPECIES-SPECIFIC COMBINED WORK PLAN FOR *PHRAGMITES AUSTRALIS* (COMMON REED GRASS)

**SITE LIST
SHEET 2 OF 17**

GLOBALID (FOR APIPP USE)	SITE NAME (FOR APIPP USE)	SPECIES	DEC REGION	STATE LAND UNIT	COUNTY	TOWN	LATITUDE*	LONGITUDE*	ACRES AT MOST RECENT SURVEY	YEAR OF MOST RECENT SURVEY	NATURAL HERITAGE REVIEW	2022 PRIORITY FOR TREATMENT	DATE OF WORK PREVIOUS PLAN APPROVAL
{BBC1A667-B1DA-4633-9B26-3AD4E3430DF0}	Just after utility pole E 33-498	<i>Phragmites australis</i>	5	Chazy Highlands State Forest	Clinton	Dannemora	44.74077	-73.73466	0.011	2022	N/A	Yes	7/1/2022
{DF28B313-3F05-4011-91DA-C3D7EF871C43}	in front of parking area sign	<i>Phragmites australis</i>	5	Chazy Highlands State Forest	Clinton	Dannemora	44.73950	-73.73418	0.003	2022	N/A	Yes	7/1/2022
{2127E6AF-6408-48EA-901C-9EED9079A613}	across from ref. marker #7102-1177	<i>Phragmites australis</i>	5	Chazy Highlands State Forest	Clinton	Dannemora	44.74351	-73.73716	0.139	2022	N/A	Yes	7/1/2022
{98C8C542-72B4-44D5-8675-08C5D5B65A36}	At ref. marker #7102-1179	<i>Phragmites australis</i>	5	Chazy Highlands State Forest	Clinton	Dannemora	44.74127	-73.73508	0.085	2022	N/A	Yes	7/1/2022
{F9DC4A82-489C-41B7-8722-29CE8180BBAE}	below telephone pole #34495	<i>Phragmites australis</i>	5	Chazy Highlands State Forest	Clinton	Dannemora	44.73868	-73.73352	0	2022	N/A	Yes Target invasive no longer observed but site will be surveyed and treated if reemergence occurs	7/1/2022
{1D105FB5-90F8-4668-81F0-8FB32EB5B698}	Across from ref. marker #7102-1177 - patch 2	<i>Phragmites australis</i>	5	Chazy Highlands State Forest	Clinton	Dannemora	44.74376	-73.73749	0.004	2022	N/A	Yes	7/1/2022
{3A83A3F7-29DE-4502-866D-A4B041784592}	Near ref. marker #7102-1179 - patch 2	<i>Phragmites australis</i>	5	Chazy Highlands State Forest	Clinton	Dannemora	44.74205	-73.73539	0.0006	2022	N/A	Yes	7/1/2022
{FE6DDBC2-AEA7-4972-8591-73B0AF52593C}	behind guardrail	<i>Phragmites australis</i>	5	Chazy Highlands State Forest	Clinton	Dannemora	44.73864	-73.73402	0.295	2022	N/A	Yes	7/1/2022
{2CE79726-E317-4F78-91AA-FCBCCEAB539F}	near ref. marker #7102-1177	<i>Phragmites australis</i>	5	Chazy Highlands State Forest	Clinton	Dannemora	44.74340	-73.73663	0.908	2022	N/A	Yes	7/1/2022
{98EC1C46-29F0-4776-9324-4060467E5528}	wetland across from ref. marker #7209-1514 - patch 2	<i>Phragmites australis</i>	5	Debar Mountain Wild Forest	Franklin	Duane	44.64969	-74.28120	0	2022	Bald Eagle	Yes Target invasive no longer observed but site will be surveyed and treated if reemergence occurs	7/1/2022
{C2DC3B07-B507-439F-A235-17832A37117F}	Intersection of STRT 458 and 30. about 50 yards in woods, in wetland	<i>Phragmites australis</i>	5	Debar Mountain Wild Forest	Franklin	Duane	44.55046	-74.31047	0.005	2022	N/A	Yes	7/1/2022
{3452905F-53F4-47F7-BB4E-B19C0BF9D3ED}	35 yds. off rd. near utility pole #361 and ref. marker #7209-1430 - patch 1	<i>Phragmites australis</i>	5	Debar Mountain Wild Forest	Franklin	Brighton	44.53498	-74.30838	0	2022	N/A	Yes Target invasive no longer observed but site will be surveyed and treated if reemergence occurs	7/1/2022

SPECIES-SPECIFIC COMBINED WORK PLAN FOR *PHRAGMITES AUSTRALIS* (COMMON REED GRASS)

**SITE LIST
SHEET 3 OF 17**

GLOBALID (FOR APIPP USE)	SITE NAME (FOR APIPP USE)	SPECIES	DEC REGION	STATE LAND UNIT	COUNTY	TOWN	LATITUDE*	LONGITUDE*	ACRES AT MOST RECENT SURVEY	YEAR OF MOST RECENT SURVEY	NATURAL HERITAGE REVIEW	2022 PRIORITY FOR TREATMENT	DATE OF WORK PREVIOUS PLAN APPROVAL
{7719275C-A507-4167-8575-CFE1D01B7ADF}	35 yds. off roadside near utility pole #361 and ref. marker #7209-1430 - patch 2	<i>Phragmites australis</i>	5	Debar Mountain Wild Forest	Franklin	Brighton	44.53511	-74.30841	0	2022	N/A	Yes Target invasive no longer observed but site will be surveyed and treated if reemergence occurs	7/1/2022
{5C54621C-5D00-4002-9479-EFBBF5E79C1E}	near utility pole #361 and ref. marker #7209-1430 - patch 3	<i>Phragmites australis</i>	5	Debar Mountain Wild Forest	Franklin	Brighton	44.53476	-74.30821	0	2022	N/A	Yes Target invasive no longer observed but site will be surveyed and treated if reemergence occurs	7/1/2022
{4B0DAE18-F1AB-4E4C-B606-827484ABF72B}	Barnum Pond site on forest preserve	<i>Phragmites australis</i>	5	Debar Mountain Wild Forest	Franklin	Brighton	44.46402	-74.26238	0	2022	N/A	Yes Target invasive no longer observed but site will be surveyed and treated if reemergence occurs	7/1/2022
{4E94B2AB-7DD2-422A-BB23-9642281807A8}	wetland across from ref. marker #7209-1514 - patch 1	<i>Phragmites australis</i>	5	Debar Mountain Wild Forest	Franklin	Duane	44.65008	-74.28120	0	2022	Bald Eagle	Yes Target invasive no longer observed but site will be surveyed and treated if reemergence occurs	7/1/2022
{EAFA2CBC-6DA9-4223-AD6A-C7784F15D71A}	Intersection of STRT 458 and 30. about 50 yards in woods, in wetland - patch 2	<i>Phragmites australis</i>	5	Debar Mountain Wild Forest	Franklin	Duane	44.55061	-74.31007	0	2022	N/A	Yes Target invasive no longer observed but site will be surveyed and treated if reemergence occurs	7/1/2022
{FBBAF461-93DB-484F-9F0E-46C0B05D39A5}	Essex Chain Tract - off four-wheeler trail near 8th Lake	<i>Phragmites australis</i>	5	Essex Chain Lakes Primitive Area	Essex	Newcomb	43.88382	-74.22250	0	2021	N/A	Yes Target invasive no longer observed but site will be surveyed and treated if reemergence occurs	7/1/2022
{AC944553-0380-4C46-AE86-96AF49DE8F96}	Before ref. marker #2102-1056	<i>Phragmites australis</i>	5	Ferris Lake Wild Forest	Hamilton	Stratford	43.18097	-74.58709	0.000002	2022	N/A	Yes	7/1/2022
{E4DF5C9A-37B0-4D09-9BDD-9D9EA0C420FB}	Wetland across from Dexter Lake parking area	<i>Phragmites australis</i>	5	Ferris Lake Wild Forest	Hamilton	Stratford	43.17891	-74.57762	0	2022	N/A	Yes Target invasive no longer observed but site will be surveyed and treated if reemergence occurs	7/1/2022
{CDAEDD1E-0F7F-46FD-83A8-5F68286D08BE}	On curve next to SR 10 sign and yellow arrow sign	<i>Phragmites australis</i>	5	Ferris Lake Wild Forest	Hamilton	Arietta	43.35830	-74.54152	0.0002	2022	N/A	Yes	7/1/2022
{C0D68B2F-4E23-4434-9AEE-E1447F7029D8}	Wetland before ref. marker #2102-1041	<i>Phragmites australis</i>	5	Ferris Lake Wild Forest	Hamilton	Stratford	43.18225	-74.61542	0.001	2021	N/A	Yes	7/1/2022
{840B3237-B2C0-412A-B943-1C96650C698B}	in wetland across & down the rd. 100 yds. From brown house	<i>Phragmites australis</i>	5	Ferris Lake Wild Forest	Hamilton	Arietta	43.23629	-74.51683	0	2022	N/A	Yes Target invasive no longer observed but site will be surveyed and treated if reemergence occurs	7/1/2022
{550FC82B-9003-4BB2-AFC3-DB7EE7A78862}	town of Arietta right side of NYSDOT stockpile area	<i>Phragmites australis</i>	5	Ferris Lake Wild Forest	Hamilton	Arietta	43.24687	-74.51796	0.002	2022	N/A	Yes	7/1/2022

SPECIES-SPECIFIC COMBINED WORK PLAN FOR *PHRAGMITES AUSTRALIS* (COMMON REED GRASS)

**SITE LIST
SHEET 4 OF 17**

GLOBALID (FOR APIPP USE)	SITE NAME (FOR APIPP USE)	SPECIES	DEC REGION	STATE LAND UNIT	COUNTY	TOWN	LATITUDE*	LONGITUDE*	ACRES AT MOST RECENT SURVEY	YEAR OF MOST RECENT SURVEY	NATURAL HERITAGE REVIEW	2022 PRIORITY FOR TREATMENT	DATE OF WORK PREVIOUS PLAN APPROVAL
{EC046483-C5CC-4A9C-8D7F-213116C5B5AE}	Next to utility pole #94.5	<i>Phragmites australis</i>	5	Ferris Lake Wild Forest	Hamilton	Stratford	43.17996	-74.56562	0.007	2022	N/A	Yes	7/1/2022
{2D108420-97B5-422E-AE98-252490933703}	Near utility pole #50	<i>Phragmites australis</i>	5	Ferris Lake Wild Forest	Hamilton	Salisbury	43.20786	-74.70125	0.028	2022	N/A	Yes	7/1/2022
{1C8B4C7B-D8FF-4FCF-9219-48BD2D0A6EE5}	Before utility pole #99	<i>Phragmites australis</i>	5	Ferris Lake Wild Forest	Hamilton	Stratford	43.18203	-74.56033	0.037	2022	N/A	Yes	7/1/2022
{2A38D170-8E87-4FA5-9602-DD992988B0FF}	Across from utility pole#126	<i>Phragmites australis</i>	5	Ferris Lake Wild Forest	Hamilton	Caroga	43.18751	-74.53359	0	2022	N/A	Yes Target invasive no longer observed but site will be surveyed and treated if reemergence occurs	7/1/2022
{FE221282-B284-46BE-9BC3-25EE6C64E4D7}	just beyond house #274	<i>Phragmites australis</i>	5	Ferris Lake Wild Forest	Hamilton	Arietta	43.23835	-74.51768	0.002	2022	N/A	Yes	7/1/2022
{DD092C8C-F8D4-425D-9942-3705FF6947D8}	Across from utility pole #49	<i>Phragmites australis</i>	5	Ferris Lake Wild Forest	Hamilton	Salisbury	43.20704	-74.70128	0.023	2022	N/A	Yes	7/1/2022
{2E09ACF8-9479-4B17-ABC7-0C2C3A912759}	Stratford, west of Burnt Vly Brook	<i>Phragmites australis</i>	5	Ferris Lake Wild Forest	Hamilton	Stratford	43.17970	-74.58088	0.015	2022	N/A	Yes	7/1/2022
{EC9FD479-ACF6-4290-A895-1BD8B17CC715}	Wetland survey, Ferris Lake Wild forest	<i>Phragmites australis</i>	5	Ferris Lake Wild Forest	Hamilton	Stratford	43.18070	-74.56157	0.064	2022	N/A	Yes	7/1/2022
{37168CE2-5AF4-474C-908C-B3086F5E4E34}	After and across from ref. marker #2102-1037	<i>Phragmites australis</i>	5	Ferris Lake Wild Forest	Hamilton	Stratford	43.18156	-74.62447	0.063	2022	N/A	Yes	7/1/2022
{565456A6-55E5-4AB7-8901-FDE09A09A0C9}	Across from and before 40mph curve sign	<i>Phragmites australis</i>	5	Ferris Lake Wild Forest	Hamilton	Caroga	43.18704	-74.53707	0.011	2022	N/A	Yes	7/1/2022
{9EF93F7B-AC00-483F-BA5C-891388DFB4BC}	Wetland across from utility pole #57	<i>Phragmites australis</i>	5	Ferris Lake Wild Forest	Hamilton	Stratford	43.18196	-74.61920	0.095	2022	N/A	Yes	7/1/2022
{1433192B-7C3E-4C07-A048-228B643CC775}	In wetland behind Arietta DOT facility	<i>Phragmites australis</i>	5	Ferris Lake Wild Forest	Hamilton	Arietta	43.24662	-74.52053	0.096	2022	N/A	Yes	7/1/2022

SPECIES-SPECIFIC COMBINED WORK PLAN FOR *PHRAGMITES AUSTRALIS* (COMMON REED GRASS)

**SITE LIST
SHEET 5 OF 17**

GLOBALID (FOR APIPP USE)	SITE NAME (FOR APIPP USE)	SPECIES	DEC REGION	STATE LAND UNIT	COUNTY	TOWN	LATITUDE*	LONGITUDE*	ACRES AT MOST RECENT SURVEY	YEAR OF MOST RECENT SURVEY	NATURAL HERITAGE REVIEW	2022 PRIORITY FOR TREATMENT	DATE OF WORK PREVIOUS PLAN APPROVAL
{577CCA05-E7CF-431B-B31B-8B8774C8D132}	just before ref. marker #2104-1171	<i>Phragmites australis</i>	5	Ferris Lake Wild Forest	Hamilton	Caroga	43.17843	-74.52678	0.057	2022	N/A	Yes	7/1/2022
{EDED1ADB-DA6D-4D42-BECA-338C951DA19A}	Salisbury, Merriman rd.	<i>Phragmites australis</i>	5	Ferris Lake Wild Forest	Hamilton	Salisbury	43.20745	-74.70120	0.128	2022	N/A	Yes	7/1/2022
{77B39762-137F-4386-A21B-EB927D48A7C4}	ref. marker #2205-1129 near large box culvert - patch 1	<i>Phragmites australis</i>	5	Ferris Lake Wild Forest	Hamilton	Arietta	43.37110	-74.54641	0.028	2022	N/A	Yes	7/1/2022
{E3DE94DD-73CA-4523-B22B-39097B861581}	In Ayers creek wetland	<i>Phragmites australis</i>	5	Ferris Lake Wild Forest	Hamilton	Stratford	43.18464	-74.62102	0.156	2022	N/A	No	7/1/2022
{A3C3283D-5551-489C-8B1A-5E8765D9F09C}	Stratford, Ferris Lake Wild Forest, Pleasant Lake	<i>Phragmites australis</i>	5	Ferris Lake Wild Forest	Hamilton	Stratford	43.18215	-74.59543	0.009	2022	N/A	Yes	7/1/2022
{81EE4E06-3F35-4285-8799-51C2F253E93D}	25 yds. past ref. marker #2102-1051 in woods	<i>Phragmites australis</i>	5	Ferris Lake Wild Forest	Hamilton	Stratford	43.18185	-74.59665	0.210	2022	N/A	Yes	7/1/2022
{AAE0090E-298A-4867-B3E8-3A3BD43C12B8}	Ferris Lake Wild Forest, near utility pole #111	<i>Phragmites australis</i>	5	Ferris Lake Wild Forest	Hamilton	Caroga	43.18341	-74.54730	0.071	2022	N/A	Yes	7/1/2022
{DD86D828-654B-4622-849C-82FB40A29C38}	In wetland behind tavern	<i>Phragmites australis</i>	5	Ferris Lake Wild Forest	Hamilton	Stratford	43.18045	-74.58983	0.248	2022	N/A	No	7/1/2022
{63AED244-B5C5-4C8F-968E-A748CC42969C}	across rd. & 50 yds. Down from ref. marker #2205-1074	<i>Phragmites australis</i>	5	Ferris Lake Wild Forest	Hamilton	Arietta	43.30805	-74.56026	0	2022	N/A	Yes Target invasive no longer observed but site will be surveyed and treated if reemergence occurs	7/1/2022
{850F7DCA-C98A-461C-99E9-CF9AF90D1373}	Before residence #882	<i>Phragmites australis</i>	5	Ferris Lake Wild Forest	Hamilton	Caroga	43.20232	-74.52667	0	2022	N/A	Yes Target invasive no longer observed but site will be surveyed and treated if reemergence occurs	7/1/2022
{1918F0E5-D70A-4949-9E71-C4FADFF8F3A0}	Behind guard rail, just before ref. marker #2102 1084	<i>Phragmites australis</i>	5	Ferris Lake Wild Forest	Hamilton	Caroga	43.18692	-74.53586	0	2022	N/A	Yes Target invasive no longer observed but site will be surveyed and treated if reemergence occurs	7/1/2022
{39C49F08-8994-4950-B6E1-94B5C291697A}	Across from ref. marker #2102-1068	<i>Phragmites australis</i>	5	Ferris Lake Wild Forest	Hamilton	Stratford	43.18023	-74.56471	0.009	2022	N/A	Yes	7/1/2022

SPECIES-SPECIFIC COMBINED WORK PLAN FOR *PHRAGMITES AUSTRALIS* (COMMON REED GRASS)

**SITE LIST
SHEET 6 OF 17**

GLOBALID (FOR APIPP USE)	SITE NAME (FOR APIPP USE)	SPECIES	DEC REGION	STATE LAND UNIT	COUNTY	TOWN	LATITUDE*	LONGITUDE*	ACRES AT MOST RECENT SURVEY	YEAR OF MOST RECENT SURVEY	NATURAL HERITAGE REVIEW	2022 PRIORITY FOR TREATMENT	DATE OF WORK PREVIOUS PLAN APPROVAL
{4BCE4201-085D-419E-9D3D-609438D08321}	town of Arrietta behind NYSDOT stockpile area	<i>Phragmites australis</i>	5	Ferris Lake Wild Forest	Hamilton	Arietta	43.24640	-74.51846	0.315	2022	N/A	Yes	7/1/2022
{652838DB-A00E-4B47-8531-F7026225A306}	Across from 45 mph curve sign, under utility pole # 120	<i>Phragmites australis</i>	5	Ferris Lake Wild Forest	Hamilton	Caroga	43.186522	-74.539846	0.0006	2022	N/A	Yes	NA
{7C6B9C42-0BF5-468F-92E9-3EFD1F78CB7C}	Across from utilizing pole #121	<i>Phragmites australis</i>	5	Ferris Lake Wild Forest	Hamilton	Caroga	43.18684	-74.538507	0.002	2022	N/A	Yes	NA
{3CFD6A43-633B-4A2A-9075-E22EBCE12C2B}	Before route 29A junction sign	<i>Phragmites australis</i>	5	Ferris Lake Wild Forest	Hamilton	Caroga	43.194005	-74.524461	0.034	2022	N/A	Yes	NA
{9F98733B-963B-42CE-8725-8CEFBDA98F9B}	Before utility pole # VZ54	<i>Phragmites australis</i>	5	Ferris Lake Wild Forest	Hamilton	Stratford	43.210657	-74.700159	0.004	2022	N/A	Yes	NA
{D7AB48AD-93BC-449D-B269-7639D5ECAE62}	At utility pole #332-208, near small triangular rock	<i>Phragmites australis</i>	5	Ferris Lake Wild Forest	Hamilton	Caroga	43.211923	-74.530732	0.019	2022	N/A	Yes	NA
{4A7F2335-DE1C-4AD3-95BD-C67EEB475D72}	Just past and across from seasonal road sign	<i>Phragmites australis</i>	5	Ferris Lake Wild Forest	Hamilton	Stratford	43.218588	-74.69445	0.0006	2022	N/A	Yes	NA
{09BDC7E2-DB24-492B-966B-F0EFB12CBC01}	Just pass ref. Marker #2308-1303	<i>Phragmites australis</i>	5	Ferris Lake Wild Forest	Hamilton	Ohio	43.395433	-74.856517	0.029	2022	N/A	Yes	NA
{994C99BB-4983-40DD-8DB1-561FAE1B717C}	30 yards before ref. Marker# 2205-1063	<i>Phragmites australis</i>	5	Ferris Lake Wild Forest	Hamilton	Arietta	43.299527	-74.560644	0.001	2022	N/A	Yes	NA
{2443E6A0-92CE-44EA-88B7-299FC2D339E3}	between rd. and Raquette Lake ref. marker #2209-1155	<i>Phragmites australis</i>	5	Golden Beach Campground	Hamilton	Arietta	43.80586	-74.60763	0.0001	2022	N/A	Yes	7/1/2022
{4827D236-3E43-4686-8271-3CEF9D7E96F0}	Across from ref. marker #1201-1120	<i>Phragmites australis</i>	5	Hammond Pond Wild Forest	Essex	Ticonderoga	43.87426	-73.60719	0	2022	N/A	Yes Target invasive no longer observed but site will be surveyed and treated if reemergence occurs	7/1/2022
{ECB4D674-7A6A-43E4-80EF-0C4F2C4B2ADF}	Howard Pond	<i>Phragmites australis</i>	5	Hammond Pond Wild Forest	Essex	North Hudson	44.018707	-73.63905	0.083	2022	N/A	Yes	NA

SPECIES-SPECIFIC COMBINED WORK PLAN FOR *PHRAGMITES AUSTRALIS* (COMMON REED GRASS)

**SITE LIST
SHEET 7 OF 17**

GLOBALID (FOR APIPP USE)	SITE NAME (FOR APIPP USE)	SPECIES	DEC REGION	STATE LAND UNIT	COUNTY	TOWN	LATITUDE*	LONGITUDE*	ACRES AT MOST RECENT SURVEY	YEAR OF MOST RECENT SURVEY	NATURAL HERITAGE REVIEW	2022 PRIORITY FOR TREATMENT	DATE OF WORK PREVIOUS PLAN APPROVAL
{65C538D6-0204-430F-972E-7B64D12A6394}	outlet of Lower Cascade Lake	<i>Phragmites australis</i>	5	High Peaks Wilderness	Essex	Keene	44.23800	-73.86061	0.013	2021	N/A	Yes	7/1/2022
{4F8B1539-5692-43A3-B8DB-1BA15E6FE7C3}	In wetland just after Second Pond boat launch - patch 2	<i>Phragmites australis</i>	5	High Peaks Wilderness	Essex	Harrietstown	44.28757	-74.18796	0.003	2022	N/A	Yes	7/1/2022
{E68CE056-9987-481B-8A87-4926A6ED086B}	wetland east of Lower Pitchoff trailhead parking - patch 4	<i>Phragmites australis</i>	5	High Peaks Wilderness	Essex	Keene	44.24379	-73.84418	0	2022	N/A	Yes Target invasive no longer observed but site will be surveyed and treated if reemergence occurs	7/1/2022
{68C8A636-83B5-430E-A625-DF4C388EE01B}	Wetland east of pitchoff - patch 5	<i>Phragmites australis</i>	5	High Peaks Wilderness	Essex	Keene	44.24374	-73.84431	0	2022	N/A	Yes Target invasive no longer observed but site will be surveyed and treated if reemergence occurs	7/1/2022
{2522ABAC-759F-435D-A0D2-43A774899EFF}	In wetland just after Second Pond boat launch	<i>Phragmites australis</i>	5	High Peaks Wilderness	Essex	Harrietstown	44.28736	-74.18817	0.010	2022	N/A	Yes	7/1/2022
{3E641EBA-E918-40C0-8DCA-060614880B56}	wetland east of Lower Pitchoff trailhead parking - patch 2	<i>Phragmites australis</i>	5	High Peaks Wilderness	Essex	Keene	44.24427	-73.84252	0	2022	N/A	Yes Target invasive no longer observed but site will be surveyed and treated if reemergence occurs	7/1/2022
{DAC57B59-D9A7-4AD2-93D2-2359B5C7AC50}	outlet of lower Cascade Lake - patch 2	<i>Phragmites australis</i>	5	High Peaks Wilderness	Essex	Keene	44.23767	-73.86132	0	2021	N/A	Yes Target invasive no longer observed but site will be surveyed and treated if reemergence occurs	7/1/2022
{4F1BE59D-EBBA-46B0-B177-C142100A2D93}	Lower Cascade Lake at pull off with ref. marker #1201-1069	<i>Phragmites australis</i>	5	High Peaks Wilderness	Essex	Keene	44.23713	-73.86273	0	2020	N/A	Yes Target invasive no longer observed but site will be surveyed and treated if reemergence occurs	7/1/2022
{01C3C999-F202-4B57-9A4F-05FFD1C31953}	Across from ref. marker #2209-1365	<i>Phragmites australis</i>	5	Jessup River Wild Forest	Hamilton	Wells	43.45981	-74.25404	0.003	2022	N/A	Yes	7/1/2022
{E3F8B8E1-2B78-4478-9ACF-F7CDF001B82A}	On the banks of Mason Lake, SE corner, West from ref. marker #2206-1340	<i>Phragmites australis</i>	5	Jessup River Wild Forest	Hamilton	Lake Pleasant	43.59784	-74.41434	0.051	2022	Common Loon	No	7/1/2022
{C57DCA78-93AB-48A3-BA6A-ADC63B94A4F8}	Between intersection of Route 28-Chamberlain Rd. and utility pole #303	<i>Phragmites australis</i>	5	Jessup River Wild Forest	Hamilton	Indian Lake	43.78000	-74.22594	0	2022	N/A	Yes Target invasive no longer observed but site will be surveyed and treated if reemergence occurs	7/1/2022
{4A536A82-F3C1-4077-B6F7-6D8564C661DF}	in between utility pole #302 and deer crossing next 1 mile sign	<i>Phragmites australis</i>	5	Jessup River Wild Forest	Hamilton	Indian Lake	43.78028	-74.22468	0.003	2022	N/A	Yes	7/1/2022

SPECIES-SPECIFIC COMBINED WORK PLAN FOR *PHRAGMITES AUSTRALIS* (COMMON REED GRASS)

**SITE LIST
SHEET 8 OF 17**

GLOBALID (FOR APIPP USE)	SITE NAME (FOR APIPP USE)	SPECIES	DEC REGION	STATE LAND UNIT	COUNTY	TOWN	LATITUDE*	LONGITUDE*	ACRES AT MOST RECENT SURVEY	YEAR OF MOST RECENT SURVEY	NATURAL HERITAGE REVIEW	2022 PRIORITY FOR TREATMENT	DATE OF WORK PREVIOUS PLAN APPROVAL
{12546D64-1A86-4528-AB72-157B5F3324FD}	Behind utility pole # 66.5 under power lines	<i>Phragmites australis</i>	5	Jessup River Wild Forest	Hamilton	Wells	43.433665	-74.315161	0.016	2022	N/A	Yes	NA
{228FB509-E283-47EF-ADD6-86BF1E37621D}	Brown Pond 1	<i>Phragmites australis</i>	5	Lake George Wild Forest	Warren	Bolton	43.65697	-73.57718	0.004	2019	N/A	Yes	7/1/2022
{3A92615B-A895-4FE7-8EF0-E3321ED27B79}	Berry Pond - patch 2	<i>Phragmites australis</i>	5	Lake George Wild Forest	Warren	Lake George	43.40149	-73.76586	0.015	2018	N/A	Yes	7/1/2022
{E327E9AF-E442-4165-90D2-C8F43F40823F}	After ref. marker #1710-1383, in wetland - patch 2	<i>Phragmites australis</i>	5	Lake George Wild Forest	Warren	Hague	43.74361	-73.63389	NA - combined with site After ref. marker #1710-1383, in wetland	2022	N/A	Yes	7/1/2022
{9A709E2B-F581-4D1F-814C-C94295081E7E}	Berry Pond	<i>Phragmites australis</i>	5	Lake George Wild Forest	Warren	Lake George	43.40144	-73.76705	0.023	2018	N/A	Yes	7/1/2022
{F9A4FFE9-A93D-4AA7-98D1-B4B76129F225}	Lily Pond road	<i>Phragmites australis</i>	5	Lake George Wild Forest	Warren	Horicon	43.71436	-73.67283	0.039	2022	N/A	Yes	7/1/2022
{DAD4D03D-3661-4B8D-BE73-BDD37DB7FD12}	Brown Pond 2	<i>Phragmites australis</i>	5	Lake George Wild Forest	Warren	Bolton	43.64991	-73.60214	0.034	2022	N/A	Yes	7/1/2022
{65C39C27-5F43-43EE-B528-936CD6CABC0D}	At ref. marker # 1702-1323	<i>Phragmites australis</i>	5	Lake George Wild Forest	Warren	Hague	43.65929	-73.57801	0.211	2022	Hemlock-Northern Hardwood Forest	Yes	7/1/2022
{7A61BC14-F21B-40F5-89A6-388D7DD21D2C}	Off trail to black mountain on pike brook road.	<i>Phragmites australis</i>	5	Lake George Wild Forest	Washington	Dresden	43.60523	-73.51344	0.135	2022	N/A	Yes	7/1/2022
{8ADD92A3-2683-4FE0-B350-054B03C55B0A}	Bolton - patch 1	<i>Phragmites australis</i>	5	Lake George Wild Forest	Warren	Bolton	43.65017	-73.60179	0.015	2021	N/A	Yes	7/1/2022
{B99FD2B3-8A68-4A6F-9232-8D50B90D9F72}	Berry Pond - patch 3	<i>Phragmites australis</i>	5	Lake George Wild Forest	Warren	Lake George	43.40217	-73.76539	0.316	2018	N/A	Yes	7/1/2022
{FE3B467E-62A2-45A0-A147-A7FFEE1858B5}	Off trail to black mountain on pike brook road.	<i>Phragmites australis</i>	5	Lake George Wild Forest	Washington	Dresden	43.60641	-73.51336	0.665	2022	N/A	No	7/1/2022

SPECIES-SPECIFIC COMBINED WORK PLAN FOR *PHRAGMITES AUSTRALIS* (COMMON REED GRASS)

**SITE LIST
SHEET 9 OF 17**

GLOBALID (FOR APIPP USE)	SITE NAME (FOR APIPP USE)	SPECIES	DEC REGION	STATE LAND UNIT	COUNTY	TOWN	LATITUDE*	LONGITUDE*	ACRES AT MOST RECENT SURVEY	YEAR OF MOST RECENT SURVEY	NATURAL HERITAGE REVIEW	2022 PRIORITY FOR TREATMENT	DATE OF WORK PREVIOUS PLAN APPROVAL
{C3682F1C-F3EB-4B40-A55D-67F1FA6FFAD6}	After ref. marker #1710-1383, in wetland	<i>Phragmites australis</i>	5	Lake George Wild Forest	Warren	Hague	43.74392	-73.63444	1.251	2022	N/A	Yes	7/1/2022
{1B400132-2F94-4CCA-9032-27C87A783CF8}	Dresden - Patch 1	<i>Phragmites australis</i>	5	Lake George Wild Forest	Washington	Dresden	43.59721	-73.52523	0.338	2022	N/A	Yes	NA
{5B970767-2CF4-443E-BED7-346B34A99815}	Inman Pond - patch 1	<i>Phragmites australis</i>	5	Lake George Wild Forest	Washington	Fort Ann	43.4934	-73.58599	0.003	2022	N/A	No	NA
{8635DD1D-4096-475E-8444-0FB6F6B6A443}	Moffitt Beach - on the beach near the parking lot and site 106	<i>Phragmites australis</i>	5	Moffitt Beach Campground	Hamilton	Lake Pleasant	43.49072	-74.40004	0.053	2022	N/A	Yes	7/1/2022
{4A8807F9-FAB0-47D5-BEAC-0C054C488338}	corner of Sagamore rd.	<i>Phragmites australis</i>	5	Moose River Plains Wild Forest	Hamilton	Long Lake	43.80816	-74.65543	0.007	2022	N/A	Yes	7/1/2022
{CEBDD333-1FE9-47B9-85DE-5A8FDD51E85E}	After utility pole #496	<i>Phragmites australis</i>	5	Moose River Plains Wild Forest	Hamilton	Inlet	43.78590	-74.69080	0.105	2022	Spruce-Northern Hardwood Forest	Yes	7/1/2022
{9D5611AB-FB3A-42D9-8095-5A881D02BC65}	At opening of Grizzle Ocean surrounding wooden walkway	<i>Phragmites australis</i>	5	Pharaoh Lake Wilderness	Essex	Ticonderoga	43.82228	-73.59700	0.064	2022	N/A	Yes	7/1/2022
{EB2A2547-561D-4AA9-A4BA-EEC0EDB3B9BF}	Pharaoh Lakes WA, near Alder Pond	<i>Phragmites australis</i>	5	Pharaoh Lake Wilderness	Essex	Schroon	43.85160	-73.67573	0.059	2022	N/A	Yes	7/1/2022
{FB751310-6EC2-44AB-B105-7CDB352B0E25}	In Wetland next to northway highway	<i>Phragmites australis</i>	5	Poke-O-Moonshine Day Use Area	Essex	Chesterfield	44.39842	-73.50232	0.678	2022	N/A	No	7/1/2022
{4745AE6B-81D8-4676-9479-FC13AF64BF4A}	Ralph road forest- wetland to the east of logging road	<i>Phragmites australis</i>	5	Ralph Road State Forest	Warren	Lake Luzerne	43.293934	-73.772044	0.020	2022	Hemlock-Northern Hardwood Forest	Yes	NA
{B4BFE465-D6C0-4707-BD8E-782B2BA18207}	across rd. from ref. marker #7205-1221 along guardrail	<i>Phragmites australis</i>	5	Saranac Lakes Wild Forest	Franklin	Harrietstown	44.29865	-74.17226	0.0008	2021	N/A	Yes	7/1/2022
{970EB621-8DA7-46D0-931F-788395C22C3B}	across from ref. marker #7201-1010	<i>Phragmites australis</i>	5	Saranac Lakes Wild Forest	Franklin	Harrietstown	44.37194	-74.21309	0	2022	N/A	Yes Target invasive no longer observed but site will be surveyed and treated if reemergence occurs	7/1/2022

SPECIES-SPECIFIC COMBINED WORK PLAN FOR *PHRAGMITES AUSTRALIS* (COMMON REED GRASS)

**SITE LIST
SHEET 10 OF 17**

GLOBALID (FOR APIPP USE)	SITE NAME (FOR APIPP USE)	SPECIES	DEC REGION	STATE LAND UNIT	COUNTY	TOWN	LATITUDE*	LONGITUDE*	ACRES AT MOST RECENT SURVEY	YEAR OF MOST RECENT SURVEY	NATURAL HERITAGE REVIEW	2022 PRIORITY FOR TREATMENT	DATE OF WORK PREVIOUS PLAN APPROVAL
{21A9043C-DA69-49C0-B9AA-0FD880657736}	Raybrook wetland well off of rd. extending onto forest preserve - patch 2	<i>Phragmites australis</i>	5	Saranac Lakes Wild Forest	Essex	North Elba	44.30176	-74.10930	0	2022	N/A	Yes Target invasive no longer observed but site will be surveyed and treated if reemergence occurs	7/1/2022
{28B3F3C9-03E1-46B4-801F-63C926B6357B}	Raybrook wetland isolated dense patch nearest to DEC headquarters	<i>Phragmites australis</i>	5	Saranac Lakes Wild Forest	Essex	North Elba	44.30265	-74.10825	0	2022	N/A	Yes Target invasive no longer observed but site will be surveyed and treated if reemergence occurs	7/1/2022
{DD5D2DD5-84A1-4BA0-BD3F-EADF74012675}	Across from ref. marker #7201-1009 - patch 2	<i>Phragmites australis</i>	5	Saranac Lakes Wild Forest	Franklin	Harrietstown	44.37072	-74.21499	0.019	2022	N/A	Yes	7/1/2022
{3DAFCE4C-BC32-494C-8727-EA892B9AD45F}	Upper Cherrypatch	<i>Phragmites australis</i>	5	Saranac Lakes Wild Forest	Essex	North Elba	44.29357	-73.94990	0.001	2022	N/A	Yes	7/1/2022
{DAA99333-EF2D-4BB9-911B-1DD2BB6D9480}	Raybrook wetland	<i>Phragmites australis</i>	5	Saranac Lakes Wild Forest	Essex	North Elba	44.30351	-74.10942	0	2022	N/A	Yes Target invasive no longer observed but site will be surveyed and treated if reemergence occurs	7/1/2022
{526C0EA8-1578-4B44-B974-0939BC372A57}	across from ref. marker #7201-1009	<i>Phragmites australis</i>	5	Saranac Lakes Wild Forest	Franklin	Harrietstown	44.37116	-74.21467	0.099	2022	N/A	Yes	7/1/2022
{226E67CE-E860-4265-9666-96C846705786}	Raybrook wetland well off of rd. extending onto forest preserve - patch 1	<i>Phragmites australis</i>	5	Saranac Lakes Wild Forest	Essex	North Elba	44.30192	-74.10964	0	2022	N/A	Yes Target invasive no longer observed but site will be surveyed and treated if reemergence occurs	7/1/2022
{26D93A46-2781-4ED8-A888-7E508A55065C}	10 meters past occurrences near Rd.	<i>Phragmites australis</i>	5	Saranac Lakes Wild Forest	Essex	North Elba	44.30275	-74.10888	0	2022	N/A	Yes Target invasive no longer observed but site will be surveyed and treated if reemergence occurs	7/1/2022
{305CFE98-3D0C-45B4-8A2C-50310B63A326}	Raybrook wetland, south side	<i>Phragmites australis</i>	5	Saranac Lakes Wild Forest	Essex	North Elba	44.30306	-74.10883	0	2022	N/A	Yes Target invasive no longer observed but site will be surveyed and treated if reemergence occurs	7/1/2022
{102B6C31-5D7F-45AA-A3F4-08EBD98069CD}	After and across road ref. marker #7205-1216	<i>Phragmites australis</i>	5	Saranac Lakes Wild Forest	Franklin	Harrietstown	44.29218	-74.17623	0	2022	N/A	Yes Target invasive no longer observed but site will be surveyed and treated if reemergence occurs	7/1/2022
{D8909E10-6F77-41B6-85FF-29588949499D}	ditch around utility pole heading from Saranac Lake to Tupper Lake just past DOT residency	<i>Phragmites australis</i>	5	Saranac Lakes Wild Forest	Franklin	Harrietstown	44.23909	-74.39327	0	2022	N/A	Yes Target invasive no longer observed but site will be surveyed and treated if reemergence occurs	7/1/2022
{1C33F9F5-6E87-4CA7-AB4F-1643D585DD40}	Just after and across from ref marker #7201-1014	<i>Phragmites australis</i>	5	Saranac Lakes Wild Forest	Franklin	Harrietstown	44.37372	-74.20591	0.005	2022	N/A	Yes	7/1/2022

SPECIES-SPECIFIC COMBINED WORK PLAN FOR *PHRAGMITES AUSTRALIS* (COMMON REED GRASS)

**SITE LIST
SHEET 11 OF 17**

GLOBALID (FOR APIPP USE)	SITE NAME (FOR APIPP USE)	SPECIES	DEC REGION	STATE LAND UNIT	COUNTY	TOWN	LATITUDE*	LONGITUDE*	ACRES AT MOST RECENT SURVEY	YEAR OF MOST RECENT SURVEY	NATURAL HERITAGE REVIEW	2022 PRIORITY FOR TREATMENT	DATE OF WORK PREVIOUS PLAN APPROVAL
{963EDE3B-233E-4900-A0D1-6C1F4A1096F9}	70 yds. beyond ref. marker 7205-1081	<i>Phragmites australis</i>	5	Saranac Lakes Wild Forest	Franklin	Harrietstown	44.23885	-74.39765	0	2022	N/A	Yes Target invasive no longer observed but site will be surveyed and treated if reemergence occurs	7/1/2022
{64AA04E8-2647-40D1-8BF1-08E806D25F3D}	Just before ref. marker #1206-1017	<i>Phragmites australis</i>	5	Saranac Lakes Wild Forest	Essex	St Armand	44.35354	-74.11260	0	2022	N/A	Yes Target invasive no longer observed but site will be surveyed and treated if reemergence occurs	7/1/2022
{144393D8-F2A5-484F-B647-DCF9AEA96F1D}	across from ref. marker #1202-1021	<i>Phragmites australis</i>	5	Saranac Lakes Wild Forest	Essex	North Elba	44.30026	-74.10434	0	2022	N/A	Yes Target invasive no longer observed but site will be surveyed and treated if reemergence occurs	7/1/2022
{4BAC4E6A-430D-4BD7-A261-E08E175C2E0A}	across rd. from ref. marker #7205-1216, down in woods	<i>Phragmites australis</i>	5	Saranac Lakes Wild Forest	Franklin	Harrietstown	44.29191	-74.17674	0	2022	N/A	Yes Target invasive no longer observed but site will be surveyed and treated if reemergence occurs	7/1/2022
{9A10E19C-98D6-4884-A43F-BD0782668E12}	Raybrook wetland isolated patch near rd.	<i>Phragmites australis</i>	5	Saranac Lakes Wild Forest	Essex	North Elba	44.30373	-74.10961	0	2022	N/A	Yes Target invasive no longer observed but site will be surveyed and treated if reemergence occurs	7/1/2022
{69ED7320-8A5B-443A-921F-505F8443C6AA}	Lower Cherrypatch	<i>Phragmites australis</i>	5	Saranac Lakes Wild Forest	Essex	North Elba	44.29681	-73.94336	0.278	2022	N/A	Yes	7/1/2022
{37EF7378-A076-4132-8952-61AE0A6B4A51}	Near utility pole #490- patch 2	<i>Phragmites australis</i>	5	Saranac Lakes Wild Forest	Franklin	Harrietstown	44.241947	-74.376853	0.715	2022	N/A	Yes	NA
{82C55CC9-5D5D-4396-ABC5-93BEC7701DE9}	Behind utility pole #41	<i>Phragmites australis</i>	5	Saranac Lakes Wild Forest	Franklin	Harrietstown	44.241954	-74.378529	0.051	2022	N/A	Yes	NA
{B2217E5B-6F51-4A16-93B7-49B0F3D7BEE0}	Across from ref marker #7205-1208	<i>Phragmites australis</i>	5	Saranac Lakes Wild Forest	Franklin	Harrietstown	44.286234	-74.189822	0.006	2022	N/A	Yes	NA
{271E6B0C-8603-4577-8771-80ECB07D3F9D}	across rd. from ref. marker #2209-1174, in wetland	<i>Phragmites australis</i>	5	Sargent Ponds Wild Forest	Hamilton	Arietta	43.82409	-74.58178	0	2022	N/A	Yes Target invasive no longer observed but site will be surveyed and treated if reemergence occurs	7/1/2022
{0B8035DD-BFCF-42D0-A3AD-561BF44A58E8}	near creek 50 yds. From utility pole #327	<i>Phragmites australis</i>	5	Shaker Mountain Wild Forest	Fulton	Caroga	43.20508	-74.52865	0.001	2022	N/A	Yes	7/1/2022
{65BB01DE-9FB3-4DD0-BDCB-92849AFF24E2}	Pinnacle Creek Wetland - patch 1	<i>Phragmites australis</i>	5	Shaker Mountain Wild Forest	Fulton	Bleecker	43.19064	-74.38721	0.034	2022	N/A	Yes	7/1/2022

SPECIES-SPECIFIC COMBINED WORK PLAN FOR *PHRAGMITES AUSTRALIS* (COMMON REED GRASS)

**SITE LIST
SHEET 12 OF 17**

GLOBALID (FOR APIPP USE)	SITE NAME (FOR APIPP USE)	SPECIES	DEC REGION	STATE LAND UNIT	COUNTY	TOWN	LATITUDE*	LONGITUDE*	ACRES AT MOST RECENT SURVEY	YEAR OF MOST RECENT SURVEY	NATURAL HERITAGE REVIEW	2022 PRIORITY FOR TREATMENT	DATE OF WORK PREVIOUS PLAN APPROVAL
{6DF4C104-8453-48F0-97D1-FE626C88B54C}	on steep bank behind gaurdail near utility pole #37	<i>Phragmites australis</i>	5	Shaker Mountain Wild Forest	Fulton	Caroga	43.19444	-74.52420	0.028	2022	N/A	Yes	7/1/2022
{DA366B4F-3FEA-4FE3-A0B7-A49A4D3BAE99}	In wetland	<i>Phragmites australis</i>	5	Shaker Mountain Wild Forest	Fulton	Caroga	43.104139	-74.46461	0.065	2022	N/A	Yes	NA
{D061514F-F3E5-43A1-803D-2008A218692D}	in wetland, near utility line	<i>Phragmites australis</i>	5	Siamese Ponds Wilderness	Warren	Indian Lake	43.77470	-74.18769	0	2022	N/A	Yes Target invasive no longer observed but site will be surveyed and treated if reemergence occurs	7/1/2022
{73CE028D-C6DE-4099-B43A-279FD0852702}	behind gaurdail & across rd. from utility pole #371	<i>Phragmites australis</i>	5	Silver Lake Wilderness	Hamilton	Arietta	43.23532	-74.51574	0.00200	2022	N/A	Yes	7/1/2022
{3560446E-F0C4-49CB-B319-533DCD36B5AB}	After sign that says test area 1	<i>Phragmites australis</i>	5	Silver Lake Wilderness	Hamilton	Arietta	43.33313	-74.53388	0.0080	2022	N/A	Yes	7/1/2022
{45D1CA87-9D90-47F6-8146-6E2CA9D7F6F0}	just past ref. marker #2205-1114	<i>Phragmites australis</i>	5	Silver Lake Wilderness	Hamilton	Arietta	43.35238	-74.53985	0.002	2022	N/A	Yes	7/1/2022
{D2B7CE8B-0561-4A34-BC0D-378CE89F575B}	across rd. from ref. marker #2205-1033	<i>Phragmites australis</i>	5	Silver Lake Wilderness	Hamilton	Arietta	43.26066	-74.54357	0.009	2022	Sedge Meadow	Yes	7/1/2022
{DDF8BACF-7206-4B33-9A49-7AC45BC493D6}	ref. marker #2205-1129 near large box culvert - patch 3	<i>Phragmites australis</i>	5	Silver Lake Wilderness	Hamilton	Arietta	43.37174	-74.54586	0.028	2022	N/A	Yes	7/1/2022
{09A6D02E-90DE-4DF6-AE18-5E2B97A8AE8B}	across rd. from ref. marker #2205-1033 - patch 2	<i>Phragmites australis</i>	5	Silver Lake Wilderness	Hamilton	Arietta	43.26028	-74.54300	0	2022	Sedge Meadow	Yes Target invasive no longer observed but site will be surveyed and treated if reemergence occurs	7/1/2022
{574CAA49-ACDB-4D75-AA56-A7DD6CA44B1B}	25 yds. beyond 35 mph curve sign	<i>Phragmites australis</i>	5	Silver Lake Wilderness	Hamilton	Arietta	43.35696	-74.54079	0.0002	2022	N/A	Yes	7/1/2022
{01B37418-2C08-47FA-BAF8-69AD744E122E}	ref. marker #2205-1129 near large box culvert - patch 2	<i>Phragmites australis</i>	5	Silver Lake Wilderness	Hamilton	Arietta	43.37108	-74.54610	0.454	2022	N/A	Yes	7/1/2022
{9029D313-342E-4EB4-9986-50E08D21F691}	Union Falls Pond - patch 3	<i>Phragmites australis</i>	5	Taylor Pond Wild Forest	Franklin	Black Brook	44.50293	-73.91107	0.0006	2012	Bald Eagle	No	7/1/2022

SPECIES-SPECIFIC COMBINED WORK PLAN FOR *PHRAGMITES AUSTRALIS* (COMMON REED GRASS)

**SITE LIST
SHEET 13 OF 17**

GLOBALID (FOR APIPP USE)	SITE NAME (FOR APIPP USE)	SPECIES	DEC REGION	STATE LAND UNIT	COUNTY	TOWN	LATITUDE*	LONGITUDE*	ACRES AT MOST RECENT SURVEY	YEAR OF MOST RECENT SURVEY	NATURAL HERITAGE REVIEW	2022 PRIORITY FOR TREATMENT	DATE OF WORK PREVIOUS PLAN APPROVAL
{8096A1DD-5746-4038-A4C0-59D822FBE51A}	Wetland by road marker 1211-1510	<i>Phragmites australis</i>	5	Taylor Pond Wild Forest	Essex	Chesterfield	44.39986	-73.50182	0.030	2022	N/A	No	7/1/2022
{33B449FD-5B1B-4ED2-9AC5-1404C55E0EB4}	Union Falls Pond - patch 5	<i>Phragmites australis</i>	5	Taylor Pond Wild Forest	Franklin	Black Brook	44.50213	-73.91219	0.009	2012	Bald Eagle	No	7/1/2022
{EDF740DE-131B-4731-A009-64AFE0B1FFDE}	Union Falls Pond - patch 2	<i>Phragmites australis</i>	5	Taylor Pond Wild Forest	Franklin	Black Brook	44.50451	-73.91152	0.027	2022	Bald Eagle	No	7/1/2022
{4AA916A7-65F0-428A-905F-5FF5FD0DA7F3}	Union Falls Pond - patch 4	<i>Phragmites australis</i>	5	Taylor Pond Wild Forest	Franklin	Black Brook	44.50264	-73.91154	0.037	2012	Bald Eagle	No	7/1/2022
{12C7D106-3AEF-492B-9474-468E6A3C7F8D}	Union Falls Pond - patch 1	<i>Phragmites australis</i>	5	Taylor Pond Wild Forest	Franklin	Black Brook	44.50483	-73.91169	0.038	2022	Bald Eagle	No	7/1/2022
{EA756894-F4DF-46A0-94BE-264B9B22C248}	before ref. marker #1211-1508	<i>Phragmites australis</i>	5	Taylor Pond Wild Forest	Essex	Chesterfield	44.40017	-73.50103	0	2022	N/A	Yes Target invasive no longer observed but site will be surveyed and treated if reemergence occurs	7/1/2022
{7C2E6DFF-F928-4995-94A0-2CA121B3121E}	Reference marker #1211-1493	<i>Phragmites australis</i>	5	Taylor Pond Wild Forest	Essex	Lewis	44.38590	-73.50874	0	2022	N/A	Yes Target invasive no longer observed but site will be surveyed and treated if reemergence occurs	7/1/2022
{4673CD16-8B20-4EDC-8D4C-F4087F82D4C1}	Wetland between rt 9 and I-87	<i>Phragmites australis</i>	5	Taylor Pond Wild Forest	Essex	Chesterfield	44.40106	-73.50160	0.289	2022	N/A	No	7/1/2022
{314D8C81-99AA-418B-932E-592B4833BD25}	Just before ref. Marker #1211-1497 median	<i>Phragmites australis</i>	5	Taylor Pond Wild Forest	Essex	Lewis	44.385209	-73.507649	0.022	2022	N/A	Yes	NA
{43BC433C-63A1-4708-B77D-A3B6CADB6D6F}	Across from aid station phone, in median. North bound	<i>Phragmites australis</i>	5	Taylor Pond Wild Forest	Essex	Chesterfield	44.39944	-73.50147	0.032	2022	N/A	Yes	NA
{FC8FA5F4-0558-4FEF-AF26-7AFC7F5C41DB}	Before culvert ref. #C720024	<i>Phragmites australis</i>	5	Taylor Pond Wild Forest	Franklin	Franklin	44.53336	-73.997062	0.001	2022	N/A	Yes	NA
{17381A15-B873-4FC5-891D-7F8CB1C1E78C}	Wilmington, Whiteface Mtn. ski area	<i>Phragmites australis</i>	5	Whiteface Mountain Ski Center	Essex	Wilmington	44.352905	-73.863891	0.052	2022	N/A	Yes	NA

SPECIES-SPECIFIC COMBINED WORK PLAN FOR *PHRAGMITES AUSTRALIS* (COMMON REED GRASS)

**SITE LIST
SHEET 14 OF 17**

GLOBALID (FOR APIPP USE)	SITE NAME (FOR APIPP USE)	SPECIES	DEC REGION	STATE LAND UNIT	COUNTY	TOWN	LATITUDE*	LONGITUDE*	ACRES AT MOST RECENT SURVEY	YEAR OF MOST RECENT SURVEY	NATURAL HERITAGE REVIEW	2022 PRIORITY FOR TREATMENT	DATE OF WORK PREVIOUS PLAN APPROVAL
{160871CD-3DB6-4C46-BCF2-BD0BC623A0A1}	Brandy Lake - patch 4	<i>Phragmites australis</i>	6	Black River Wild Forest	Oneida	Forestport	43.56810	-75.15409	0.022	2022	N/A	No	7/1/2022
{65A25211-B07B-4790-A405-A67B0621B69B}	Brandy Lake - patch 2	<i>Phragmites australis</i>	6	Black River Wild Forest	Oneida	Forestport	43.56833	-75.15444	0.048	2022	N/A	No	7/1/2022
{D26BB4EB-1282-40EC-B497-E915ED62A0CE}	Brandy Lake - patch 1	<i>Phragmites australis</i>	6	Black River Wild Forest	Oneida	Forestport	43.56759	-75.15530	0.070	2022	N/A	No	7/1/2022
{F5F76DD3-003E-4A66-9724-1693575B1767}	Brandy Lake - patch 3	<i>Phragmites australis</i>	6	Black River Wild Forest	Oneida	Forestport	43.56873	-75.15418	0.194	2022	N/A	No	7/1/2022
{443F8608-EED8-472C-A767-AC4395A96295}	100 ft. from Covert	<i>Phragmites australis</i>	6	Black River Wild Forest	Herkimer	Webb	43.65424	-75.08079	0.0005	2022	N/A	Yes	7/1/2022
{BC1541F5-B54B-4396-B9B4-3E7C8220BC5B}	near ref. marker #2308-1014 in woods	<i>Phragmites australis</i>	6	Black River Wild Forest	Herkimer	Webb	43.61748	-75.09853	0.249	2022	N/A	Yes	7/1/2022
{344F70BA-826A-460B-AE2C-69040C437443}	Wanakena wetland - patch 2	<i>Phragmites australis</i>	6	Cranberry Lake Wild Forest	St. Lawrence	Fine	44.13946	-74.95270	0	2022	N/A	Yes Target invasive no longer observed but site will be surveyed and treated if reemergence occurs	7/1/2022
{0E44F249-BA3D-4235-982D-A1CF9EE990CB}	drainage ditch near boulders	<i>Phragmites australis</i>	6	Cranberry Lake Wild Forest	St. Lawrence	Colton	44.25477	-74.76365	0	2022	N/A	Yes Target invasive no longer observed but site will be surveyed and treated if reemergence occurs	7/1/2022
{3BA6B209-FF71-4902-8136-7B4F511165E4}	ref. marker #7504-1298 - patch 2	<i>Phragmites australis</i>	6	Cranberry Lake Wild Forest	St. Lawrence	Clifton	44.18332	-74.88362	0	2022	N/A	Yes Target invasive no longer observed but site will be surveyed and treated if reemergence occurs	7/1/2022
{B7DF9DCD-BD4B-47A1-BD5F-DD9FCFB18261}	near ref. marker #7504-1404	<i>Phragmites australis</i>	6	Cranberry Lake Wild Forest	St. Lawrence	Colton	44.27339	-74.73745	0	2022	N/A	Yes Target invasive no longer observed but site will be surveyed and treated if reemergence occurs	7/1/2022
{C92AE0B0-BD83-4D8F-AAAB-2A8D2E74A3DD}	wetland on forest preserve near Wanakena	<i>Phragmites australis</i>	6	Cranberry Lake Wild Forest	St. Lawrence	Fine	44.14673	-74.94991	0.004	2022	N/A	Yes	7/1/2022
{BD878071-D6F7-4154-AA84-AF3B7A564F3D}	Peavine Swamp - patch 2	<i>Phragmites australis</i>	6	Cranberry Lake Wild Forest	St. Lawrence	Clifton	44.19452	-74.87427	0	2022	N/A	Yes Target invasive no longer observed but site will be surveyed and treated if reemergence occurs	7/1/2022

SPECIES-SPECIFIC COMBINED WORK PLAN FOR *PHRAGMITES AUSTRALIS* (COMMON REED GRASS)

**SITE LIST
SHEET 15 OF 17**

GLOBALID (FOR APIPP USE)	SITE NAME (FOR APIPP USE)	SPECIES	DEC REGION	STATE LAND UNIT	COUNTY	TOWN	LATITUDE*	LONGITUDE*	ACRES AT MOST RECENT SURVEY	YEAR OF MOST RECENT SURVEY	NATURAL HERITAGE REVIEW	2022 PRIORITY FOR TREATMENT	DATE OF WORK PREVIOUS PLAN APPROVAL
{DDA2E04E-51CA-42BF-89C4-4C9078884660}	Cranberry Lake Wetland - patch 1	<i>Phragmites australis</i>	6	Cranberry Lake Wild Forest	St. Lawrence	Clifton	44.22590	-74.81596	0	2022	N/A	Yes Target invasive no longer observed but site will be surveyed and treated if reemergence occurs	7/1/2022
{64B1B355-2783-4646-84F8-3209492EB162}	ref. marker #7504-1298 - patch 1	<i>Phragmites australis</i>	6	Cranberry Lake Wild Forest	St. Lawrence	Clifton	44.18316	-74.88396	0.00001	2022	N/A	Yes	7/1/2022
{860DB6E6-F02D-4741-86FA-7FB9F749EF21}	ref. marker #7504-1298 - patch 3	<i>Phragmites australis</i>	6	Cranberry Lake Wild Forest	St. Lawrence	Clifton	44.18279	-74.88455	0	2022	N/A	Yes Target invasive no longer observed but site will be surveyed and treated if reemergence occurs	7/1/2022
{3251E826-7F4E-4CF9-9917-79AF0AA0D76B}	near ref. marker #7504-1300 - patch 3	<i>Phragmites australis</i>	6	Cranberry Lake Wild Forest	St. Lawrence	Clifton	44.18496	-74.87962	0	2022	N/A	Yes Target invasive no longer observed but site will be surveyed and treated if reemergence occurs	7/1/2022
{BB3AA27A-0EB0-4394-B42A-7E20E5B46455}	Peavine Swamp - patch 3 near culvert outlet	<i>Phragmites australis</i>	6	Cranberry Lake Wild Forest	St. Lawrence	Clifton	44.19535	-74.87338	0	2022	N/A	Yes Target invasive no longer observed but site will be surveyed and treated if reemergence occurs	7/1/2022
{2CDD882F-4C9B-44F4-B598-F0438EC42748}	Route 3 Wetland	<i>Phragmites australis</i>	6	Cranberry Lake Wild Forest	St. Lawrence	Clifton	44.19693	-74.86939	0	2022	N/A	Yes Target invasive no longer observed but site will be surveyed and treated if reemergence occurs	7/1/2022
{879EA0C3-5A6D-42C1-A4B4-03FCBF505B90}	wetland on forest preserve near ref. marker #7504-1348 on snow plow turn around sign	<i>Phragmites australis</i>	6	Cranberry Lake Wild Forest	St. Lawrence	Clifton	44.22374	-74.81807	0	2022	N/A	Yes Target invasive no longer observed but site will be surveyed and treated if reemergence occurs	7/1/2022
{77254D63-8952-47B5-8F4C-143902D8B4D3}	Near utility pole NG #180	<i>Phragmites australis</i>	6	Cranberry Lake Wild Forest	St. Lawrence	Clifton	44.19470	-74.87356	0	2022	N/A	Yes Target invasive no longer observed but site will be surveyed and treated if reemergence occurs	7/1/2022
{EF663CAF-AEAF-4943-91E9-A83CC9DAB9BB}	Wanakena wetland - patch 1	<i>Phragmites australis</i>	6	Cranberry Lake Wild Forest	St. Lawrence	Fine	44.13915	-74.95233	0	2022	N/A	Yes Target invasive no longer observed but site will be surveyed and treated if reemergence occurs	7/1/2022
{AA415028-9045-45FE-AAF7-5047D9DD63BD}	In wetland 30 yds ref. marker #7504-1350	<i>Phragmites australis</i>	6	Cranberry Lake Wild Forest	St. Lawrence	Clifton	44.22651	-74.81511	0	2022	N/A	Yes Target invasive no longer observed but site will be surveyed and treated if reemergence occurs	7/1/2022
{AA82FD7D-EEA4-48F4-9D76-AAE51B72209E}	In wetland across from ref. marker #7504-1346	<i>Phragmites australis</i>	6	Cranberry Lake Wild Forest	St. Lawrence	Clifton	44.22188	-74.82094	0	2022	N/A	Yes Target invasive no longer observed but site will be surveyed and treated if reemergence occurs	7/1/2022
{B56A2C02-0B8F-49DC-97BC-99E4D01F0FB4}	near ref. marker #7504-1300 - patch 1	<i>Phragmites australis</i>	6	Cranberry Lake Wild Forest	St. Lawrence	Clifton	44.18518	-74.87920	0	2022	N/A	Yes Target invasive no longer observed but site will be surveyed and treated if reemergence occurs	7/1/2022

SPECIES-SPECIFIC COMBINED WORK PLAN FOR *PHRAGMITES AUSTRALIS* (COMMON REED GRASS)

**SITE LIST
SHEET 16 OF 17**

GLOBALID (FOR APIPP USE)	SITE NAME (FOR APIPP USE)	SPECIES	DEC REGION	STATE LAND UNIT	COUNTY	TOWN	LATITUDE*	LONGITUDE*	ACRES AT MOST RECENT SURVEY	YEAR OF MOST RECENT SURVEY	NATURAL HERITAGE REVIEW	2022 PRIORITY FOR TREATMENT	DATE OF WORK PREVIOUS PLAN APPROVAL
{3F7DE85C-EDEE-44DF-B3BE-F5DFBE12D0D7}	Peavine Swamp - patch 4	<i>Phragmites australis</i>	6	Cranberry Lake Wild Forest	St. Lawrence	Clifton	44.19390	-74.87470	0	2022	N/A	Yes Target invasive no longer observed but site will be surveyed and treated if reemergence occurs	7/1/2022
{8932A011-B581-4C99-84EF-D7504F25DBEF}	Peavine Swamp - patch 6	<i>Phragmites australis</i>	6	Cranberry Lake Wild Forest	St. Lawrence	Clifton	44.19410	-74.87456	0	2022	N/A	Yes Target invasive no longer observed but site will be surveyed and treated if reemergence occurs	7/1/2022
{3A9A8665-EC08-46CF-BD5E-1FF07515135A}	40 yds. From ref. marker #7504-1292	<i>Phragmites australis</i>	6	Cranberry Lake Wild Forest	St. Lawrence	Clifton	44.18026	-74.89539	0	2022	N/A	Yes Target invasive no longer observed but site will be surveyed and treated if reemergence occurs	7/1/2022
{46930276-18DF-4BD5-93C6-477405AB557D}	Peavine Swamp - patch 5	<i>Phragmites australis</i>	6	Cranberry Lake Wild Forest	St. Lawrence	Clifton	44.19380	-74.87482	0	2022	N/A	Yes Target invasive no longer observed but site will be surveyed and treated if reemergence occurs	7/1/2022
{1EB99A04-15D5-48C1-A091-1DBB23646227}	across from James F. Dubar forest sign	<i>Phragmites australis</i>	6	Cranberry Lake Wild Forest	St. Lawrence	Clifton	44.18014	-74.90110	0	2022	N/A	Yes Target invasive no longer observed but site will be surveyed and treated if reemergence occurs	7/1/2022
{6FF53923-AF9D-46C1-BEAE-F379FFA8632B}	near ref. marker #7504-1300 - patch 2	<i>Phragmites australis</i>	6	Cranberry Lake Wild Forest	St. Lawrence	Clifton	44.18505	-74.87941	0	2022	N/A	Yes Target invasive no longer observed but site will be surveyed and treated if reemergence occurs	7/1/2022
{277A122A-E7F9-4B3F-A3AE-4E5DABDEFD0B}	Peavine Swamp - patch 1	<i>Phragmites australis</i>	6	Cranberry Lake Wild Forest	St. Lawrence	Clifton	44.19352	-74.87478	0	2022	N/A	Yes Target invasive no longer observed but site will be surveyed and treated if reemergence occurs	7/1/2022
{72AC499D-E002-49A8-A825-D167F8BBF72A}	Cranberry Lake Wetland - patch 2	<i>Phragmites australis</i>	6	Cranberry Lake Wild Forest	St. Lawrence	Clifton	44.22535	-74.81310	0.444	2021	N/A	Yes	7/1/2022
{634C0094-3DB7-4D76-A1F1-C34E7C6A950A}	At pull off	<i>Phragmites australis</i>	6	Cranberry Lake Wild Forest	St. Lawrence	Clifton	44.225405	-74.816913	0.006	2022	N/A	Yes	NA
{E0568E2D-5E67-4606-B129-FFBE237AB2AB}	At to ref. #7504-1402	<i>Phragmites australis</i>	6	Cranberry Lake Wild Forest	St. Lawrence	Colton	44.265603	-74.740806	0.015	2022	N/A	Yes	NA
{5FDA74E0-1CC0-405A-934E-A1016629D8F2}	At parking area at ref. Marker # 7209-1001	<i>Phragmites australis</i>	6	Horseshoe Lake Wild Forest	St. Lawrence	Tupper Lake	44.125261	-74.537832	0.000	2022	N/A	Yes	NA
{0DDCD547-7EDF-45BC-BF83-8750EE16D5AE}	Forest Preserve near Stillwater Reservoir	<i>Phragmites australis</i>	6	Independence River Wild Forest	Lewis	Webb	43.87108	-75.03984	0.053	2020	N/A	No	7/1/2022

SPECIES-SPECIFIC COMBINED WORK PLAN FOR *PHRAGMITES AUSTRALIS* (COMMON REED GRASS)

**SITE LIST
SHEET 17 OF 17**

GLOBALID (FOR APIPP USE)	SITE NAME (FOR APIPP USE)	SPECIES	DEC REGION	STATE LAND UNIT	COUNTY	TOWN	LATITUDE*	LONGITUDE*	ACRES AT MOST RECENT SURVEY	YEAR OF MOST RECENT SURVEY	NATURAL HERITAGE REVIEW	2022 PRIORITY FOR TREATMENT	DATE OF WORK PREVIOUS PLAN APPROVAL
{A08491B3-89D5-4E6A-BC73-41C9C48A8EAE}	Necessary Dam rd. off of Stillwater rd. far end of marsh	<i>Phragmites australis</i>	6	Independence River Wild Forest	Lewis	Webb	43.89624	-75.04653	0	2022	Common Loon	Yes Target invasive no longer observed but site will be surveyed and treated if reemergence occurs	7/1/2022
{A603C39B-7850-47E1-B0AF-D4A9723AC754}	25 yds. from 35 mph left curve sign under powerline	<i>Phragmites australis</i>	6	Raquette River Wild Forest	St. Lawrence	Colton	44.32225	-74.72222	0	2022	N/A	Yes Target invasive no longer observed but site will be surveyed and treated if reemergence occurs	7/1/2022
{1886CA5F-C76F-4828-B65C-5F087D66F2B2}	Right before state route 3 and bike route sign	<i>Phragmites australis</i>	6	Raquette-Jordan Boreal Primitive Area	St. Lawrence	Piercefield	44.243913	-74.600133	0.059	2022	N/A	Yes	NA

* Coordinates in WGS 1984 Web Mercator Auxiliary Sphere