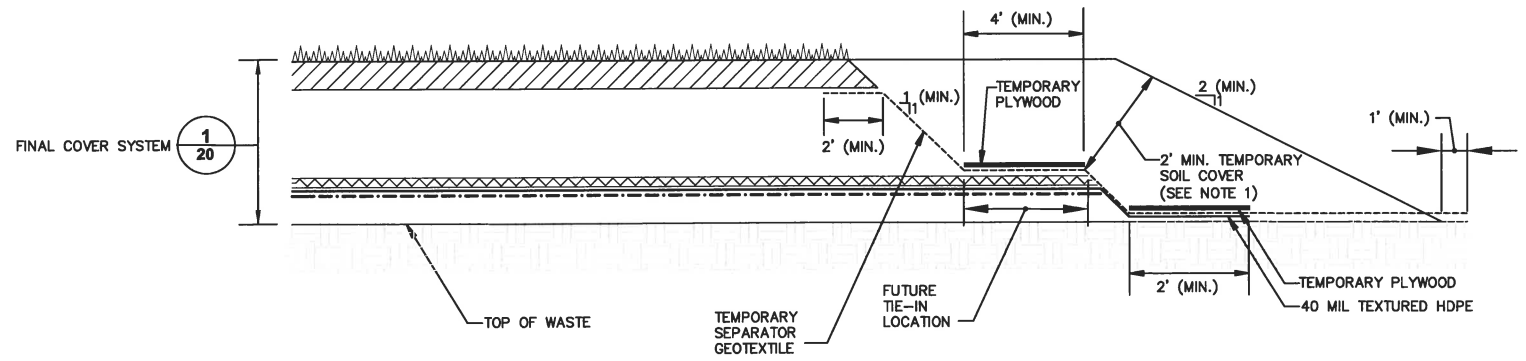


NOTE:

1. SEPARATION LAYER SHALL CONSIST OF GENERAL FILL MATERIAL HAVING A MAXIMUM PARTICLE SIZE OF 2-INCHES.

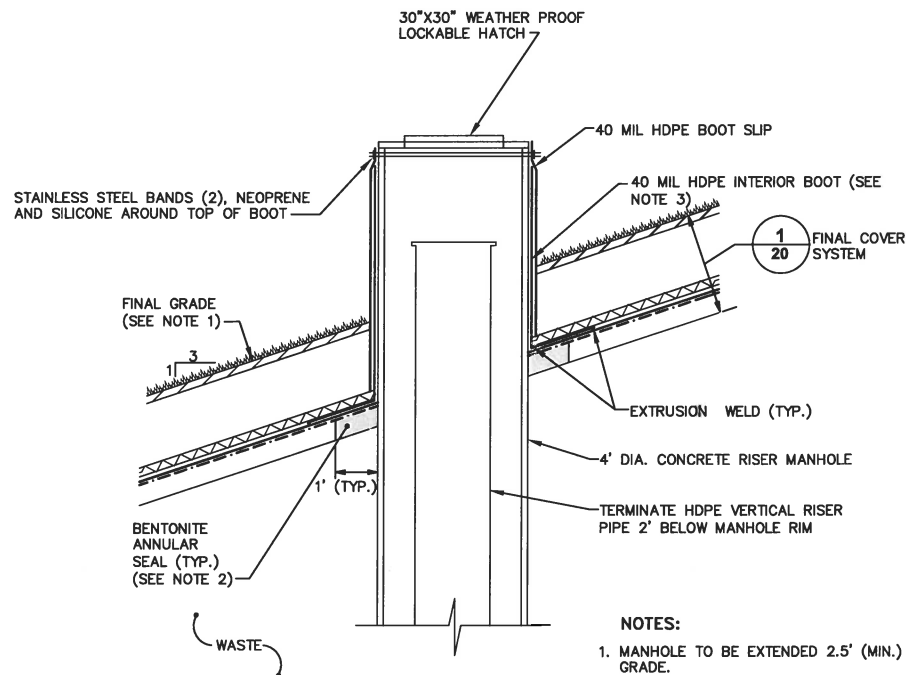
FINAL COVER SYSTEM 1
NOT TO SCALE



NOTE:

1. TEMPORARY SOIL COVER REPRESENTS EARTHEN MATERIAL TO BE REMOVED DURING FUTURE TIE-IN CONSTRUCTION TO ACHIEVE PERMIT GRADES. GEOSYNTHETICS TO BE PROTECTED DURING REMOVAL.

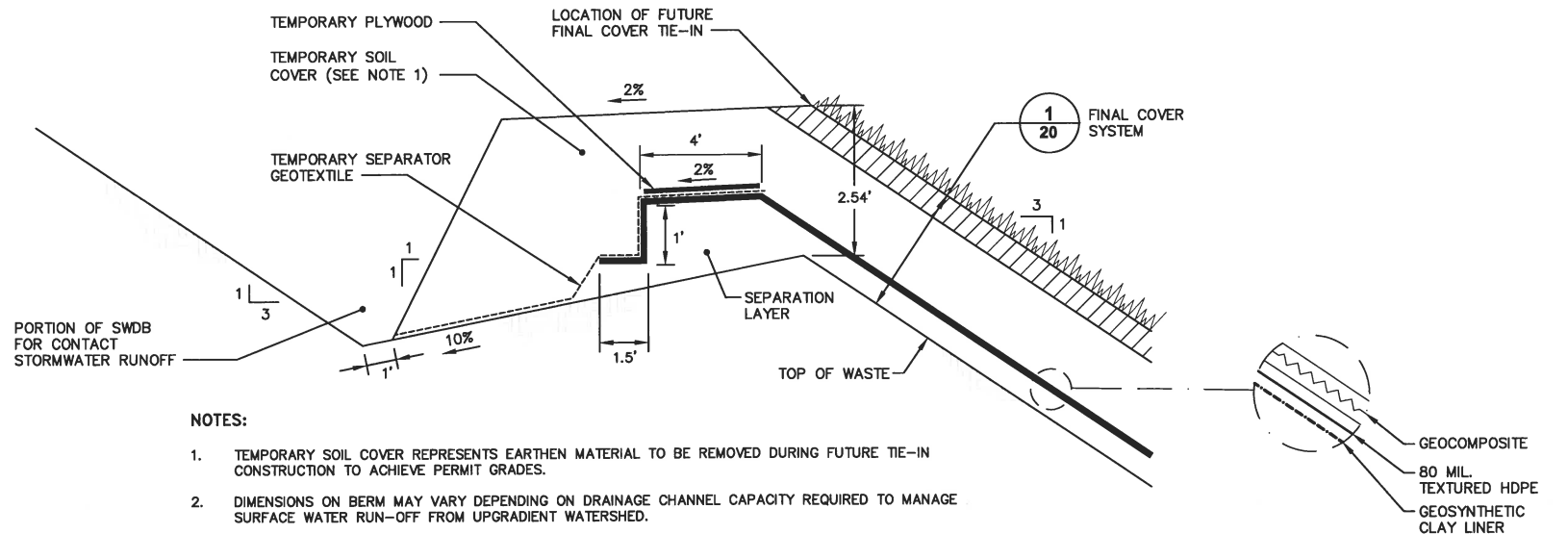
TEMPORARY FINAL COVER SYSTEM TERMINATION AT SIDESLOPE OR TOP PLATEAU 2
NOT TO SCALE



NOTES:

1. MANHOLE TO BE EXTENDED 2.5' (MIN.) ABOVE FINAL GRADE.
2. SEAL ANNULAR SPACE AROUND RISER PIPE WITH BENTONITE PRIOR TO FINAL COVER PLACEMENT.
3. 40 MIL HDPE INTERIOR BOOT TO BE LEFT UNATTACHED TO MANHOLE AND EXTERIOR BOOT SLIP TO ALLOW FOR MOVEMENT.

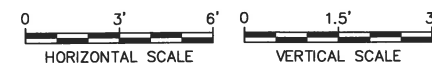
FINAL COVER VERTICAL RISER PENETRATION 3
NOT TO SCALE



NOTES:

1. TEMPORARY SOIL COVER REPRESENTS EARTHEN MATERIAL TO BE REMOVED DURING FUTURE TIE-IN CONSTRUCTION TO ACHIEVE PERMIT GRADES.
2. DIMENSIONS ON BERM MAY VARY DEPENDING ON DRAINAGE CHANNEL CAPACITY REQUIRED TO MANAGE SURFACE WATER RUN-OFF FROM UPGRAIDENT WATERSHED.
3. FUTURE GEOSYNTHETICS TIE-IN EXTRUSION SEAM TO BE MADE ON SURFACE WATER DIVERSION BERM.

TEMPORARY FINAL COVER SYSTEM TERMINATION AT SURFACE WATER DIVERSION BERM 4



GENERAL NOTE:

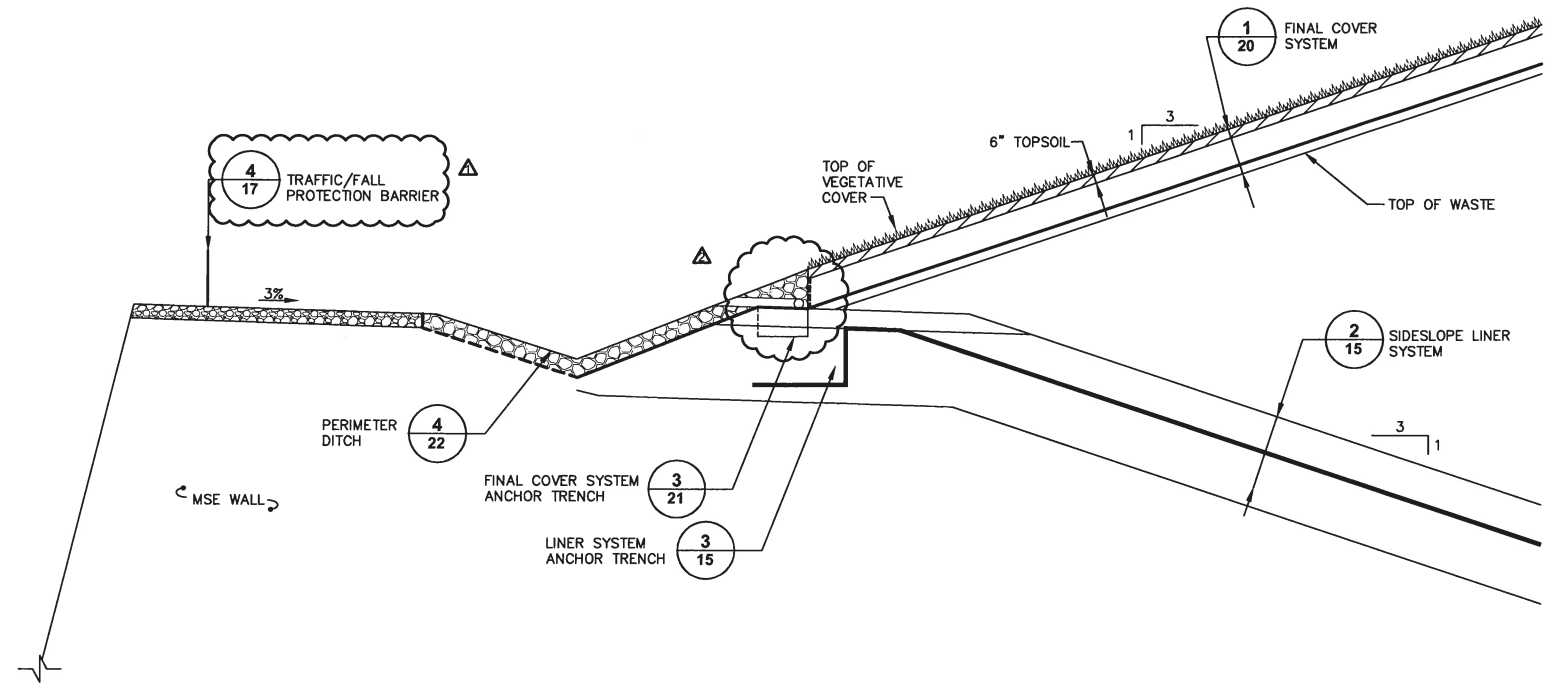
1. GEOSYNTHETICS ARE SHOWN AT AN EXAGGERATED SCALE IN CERTAIN DETAILS FOR CLARITY.

CITY: SYRACUSE DIV: GROUP: ENV: CAD: DR: K. DAVIS G. STOWELL L. FORAKER LD: P/C: W. POPHAM PK: W. RANKIN TM: B. STONE LVR: ON: OFF: REF: G:\ENV\CAD\SYRACUSE\ACT180023725\201\10003\DWG\RMU_2023725620.dwg LAYOUT: 20. SAVED: 2/8/2013 3:28 PM ACADVER: 18.1 (LMS TECH) PAGES: 20 PLOT: 2/8/2013 1:14 PM BY: SARTORI, KATHERINE

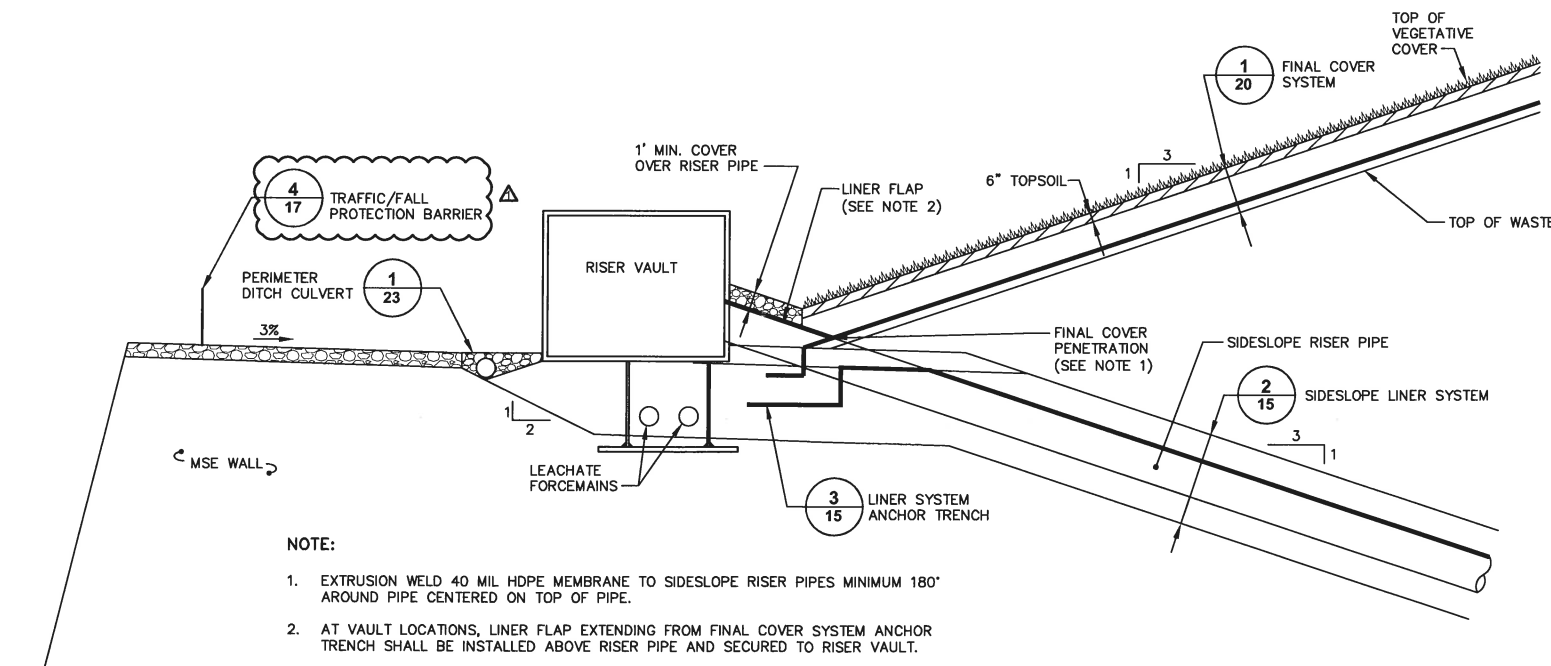
XREFS: 23725X00

SCALE(S) AS INDICATED		Professional Engineer's Name JOSEPH MOLINA Professional Engineer's No. 072644		CWM CHEMICAL SERVICES, LLC • MODEL CITY, NEW YORK RESIDUALS MANAGEMENT UNIT 2 PERMIT DRAWING		ARCADIS Project No. 80023725.2009.00006	
THIS BAR REPRESENTS ONE INCH ON THE ORIGINAL DRAWING.		USE TO VERIFY FIGURE REPRODUCTION SCALE		State NY		Date AUGUST 2009	
No.		Date		Project Mgr. WAR		ARCADIS of New York, Inc. 6723 Towpath Road P.O. Box 66 Syracuse, New York TEL. 315.446.9120	
Revisions		By		Checked by BMS		20	
THIS DRAWING IS THE PROPERTY OF THE ARCADIS ENTITY IDENTIFIED IN THE TITLE BLOCK AND MAY NOT BE REUSED OR ALTERED IN WHOLE OR IN PART WITHOUT THE EXPRESS WRITTEN PERMISSION OF SAME.		Designed by BMS/PTO		Drawn by SJK		GENERAL	

CITY: SYRACUSE DIVGROUP: ENVCAD DB: K. DAVIS N. SMITHGALL K. DAVIS LD: PIC: W. POPHAM PM: W. RANKIN TM: B. STONE LVR: ON*OFF*REF* PAGES: 21
G:\ENVCAD\SYRACUSE\ACT\B0023725\2011\100003\DWG\RMU_23725621.dwg LAYOUT: 21 SAVED: 2/25/2013 1:49 PM ACADVER: 18.15 (LMS TECH) PLOTSETUP: PLOTSTYLETABLE: PLTCONTI.CTB PLOTTED: 2/25/2013 1:49 PM BY: SARTORI, KATHERINE
PROJECTNAME: 23725X00
SHEETS: 23725X00

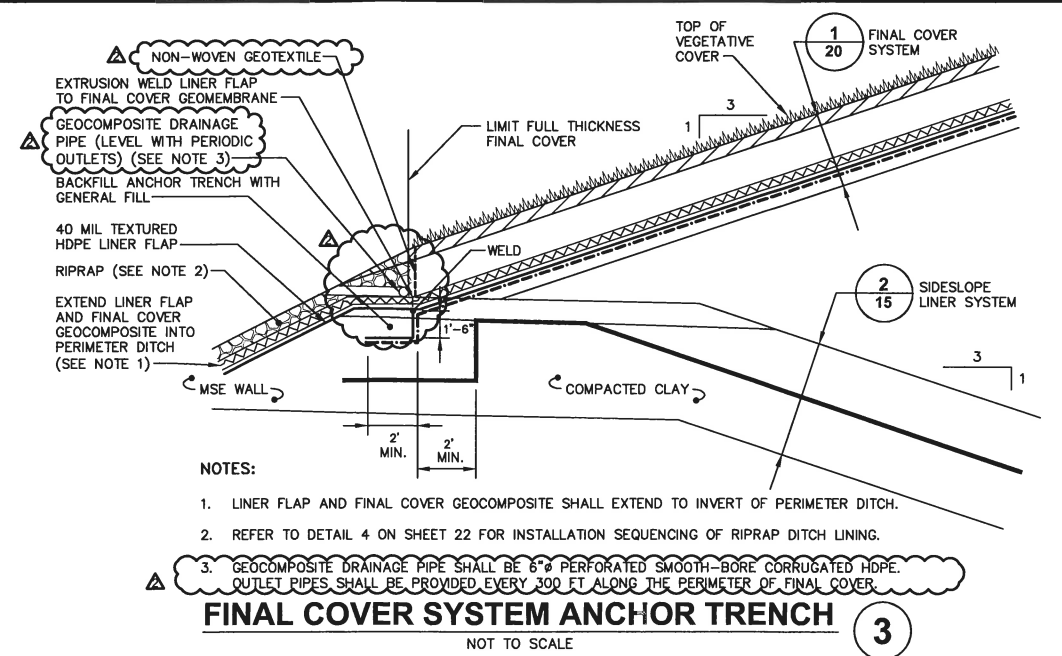


TYPICAL FINAL COVER TERMINATION 1
0 5' 10'
GRAPHIC SCALE

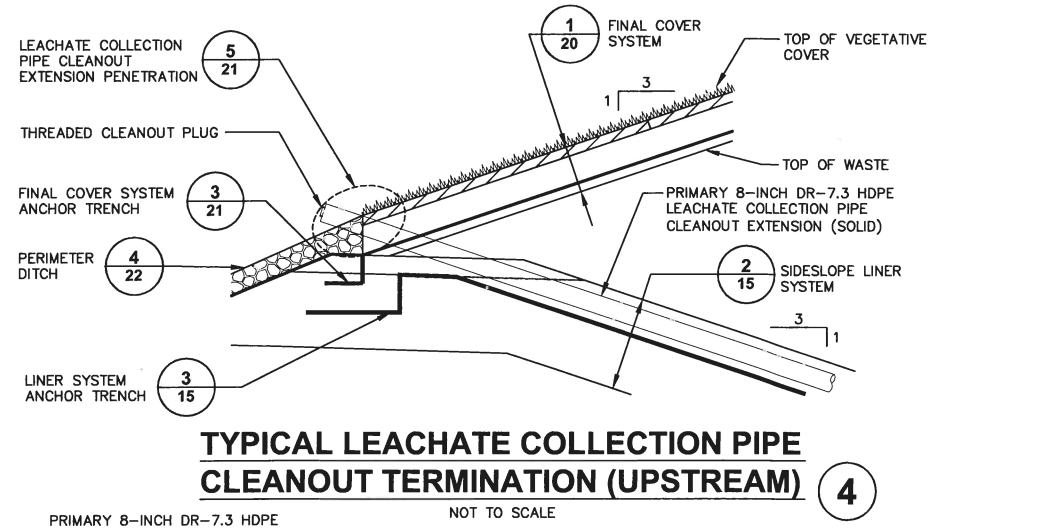


FINAL COVER TERMINATION AT RISER VAULT 2
0 5' 10'
GRAPHIC SCALE

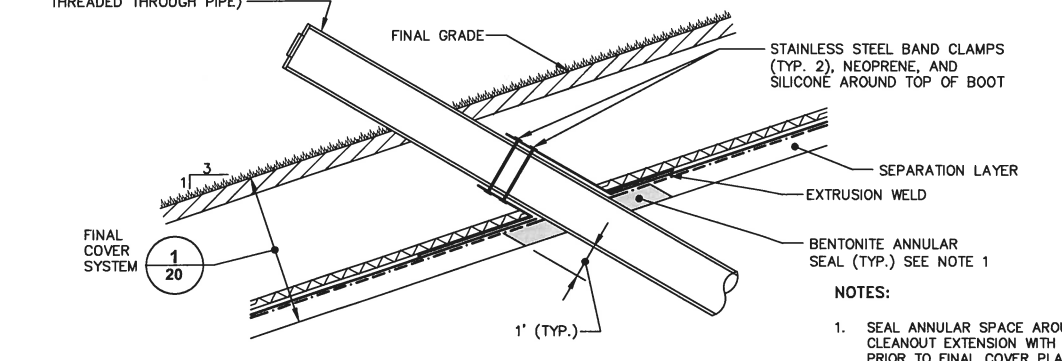
- NOTE:
1. EXTRUSION WELD 40 MIL HDPE MEMBRANE TO SIDESLOPE RISER PIPES MINIMUM 180" AROUND PIPE CENTERED ON TOP OF PIPE.
 2. AT VAULT LOCATIONS, LINER FLAP EXTENDING FROM FINAL COVER SYSTEM ANCHOR TRENCH SHALL BE INSTALLED ABOVE RISER PIPE AND SECURED TO RISER VAULT.



FINAL COVER SYSTEM ANCHOR TRENCH 3
NOT TO SCALE

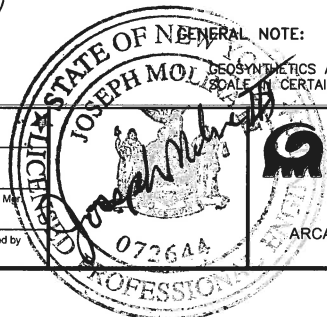


TYPICAL LEACHATE COLLECTION PIPE CLEANOUT TERMINATION (UPSTREAM) 4
NOT TO SCALE



LEACHATE COLLECTION PIPE CLEANOUT EXTENSION PENETRATION 5
NOT TO SCALE

GENERAL NOTE:
GEOMETRICS ARE SHOWN AT AN EXAGGERATED SCALE FOR CERTAIN DETAILS FOR CLARITY.



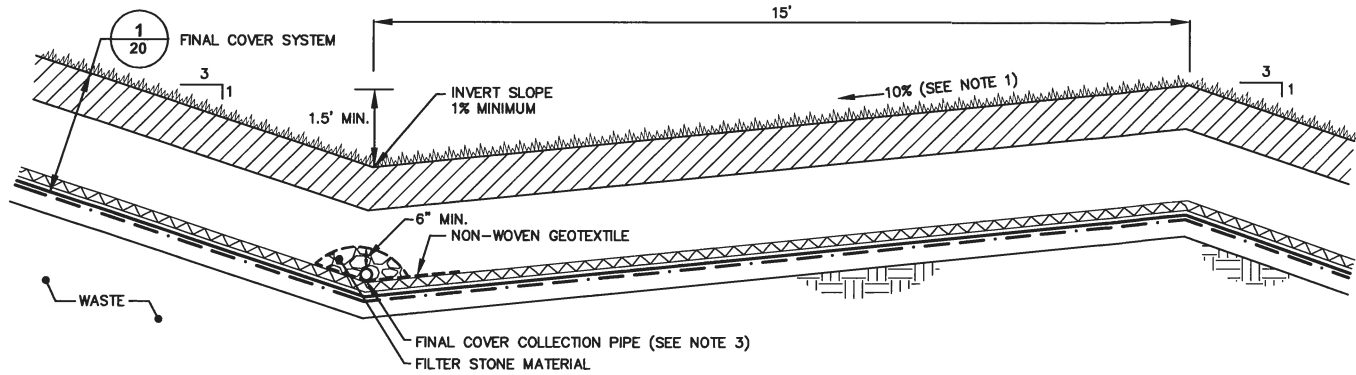
ARCADIS OF NEW YORK, INC.

CWM CHEMICAL SERVICES, LLC • MODEL CITY, NEW YORK
RESIDUALS MANAGEMENT UNIT 2 PERMIT DRAWING

FINAL COVER DETAILS

GENERAL

ARCADIS Project No.
B0023725.2009.00006
Date
AUGUST 2009
ARCADIS of New York, Inc.
6723 Tawpath Road
P.O. Box 66
Syracuse, New York
TEL: 315.446.9120



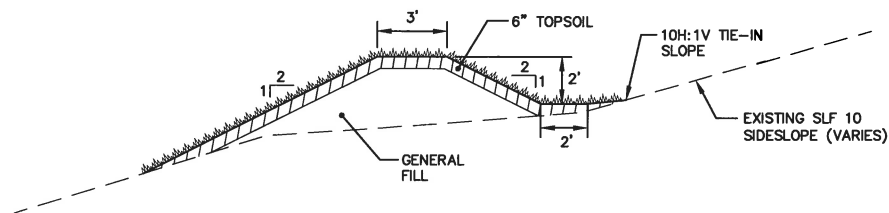
NOTES:

1. MINIMUM OUTBOARD CHANNEL SIDESLOPE FOR UNCAPPED AREAS IS 10%.
2. INTERIOR SIDESLOPES OF SURFACE WATER DIVERSION BERMS SHALL BE LINED WITH TEMPORARY EROSION CONTROL MAT.
3. FINAL COVER COLLECTION PIPE SHALL BE 6"Ø. PIPES SHALL BE PERFORATED SMOOTH-BORE CORRUGATED HDPE.

SURFACE WATER DIVERSION BERM

NOT TO SCALE

1



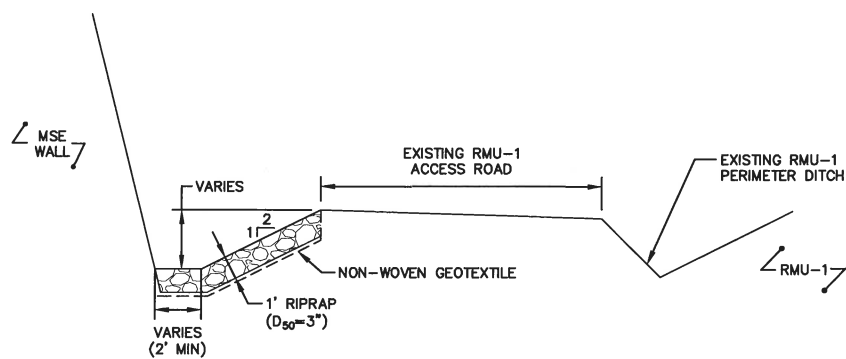
NOTE:

1. INTERIOR SIDESLOPES OF SLF 10 DIVERSION CHANNEL SHALL BE LINED WITH TEMPORARY EROSION CONTROL MAT.

SLF 10 DIVERSION CHANNEL

SCALE: 1"=4'

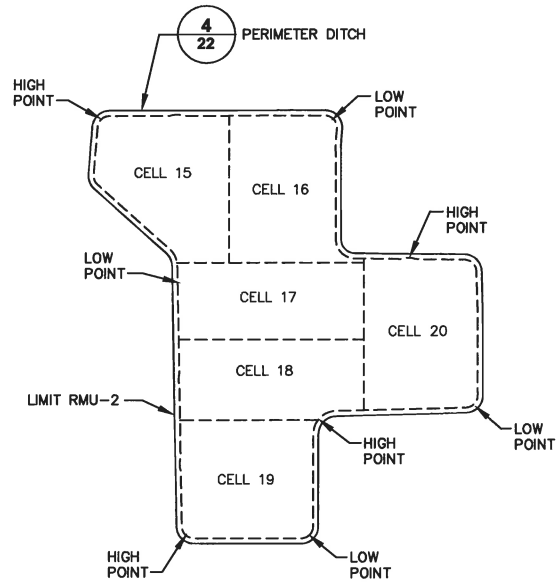
2



RMU-1/RMU-2 DITCH

SCALE: 1"=4'

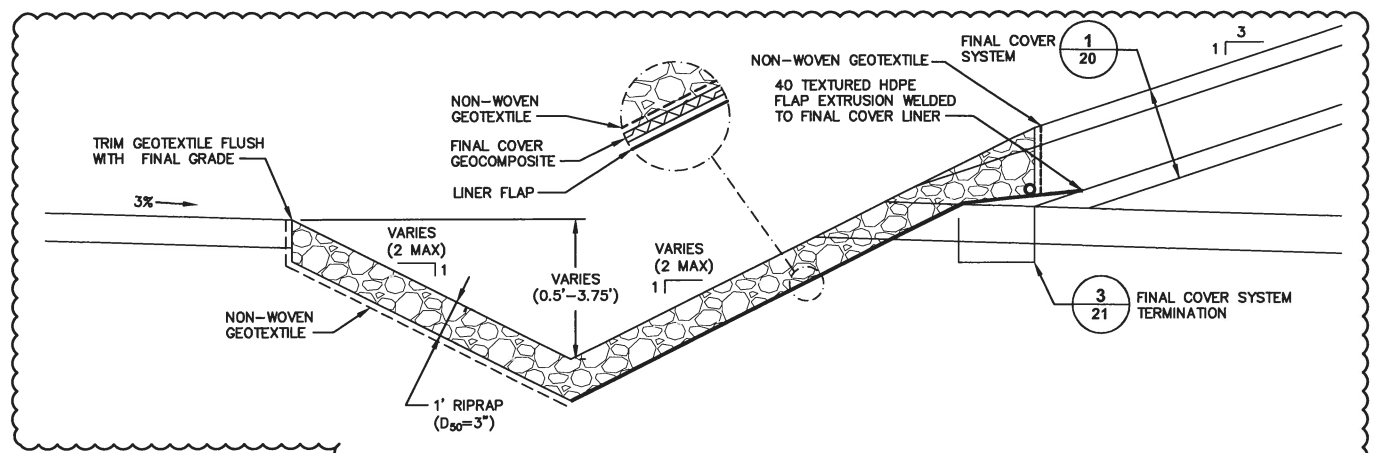
3



PERIMETER DITCH LOCATION PLAN

SCALE: 1"=400'

4



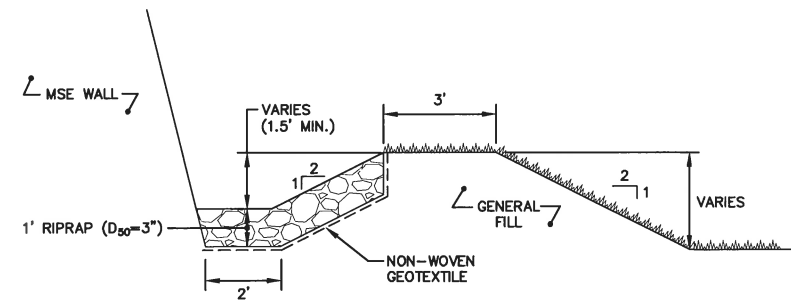
NOTES:

1. RIPRAP LINING MAY BE INSTALLED IMMEDIATELY FOLLOWING CONSTRUCTION OF DITCH OR DELAYED UNTIL CONSTRUCTION OF ADJACENT FINAL COVER AREAS. IF RIPRAP IS INSTALLED IMMEDIATELY FOLLOWING DITCH CONSTRUCTION, LINER FLAP SHALL BE OMITTED UNTIL ADJACENT FINAL COVER AREAS ARE CONSTRUCTED.

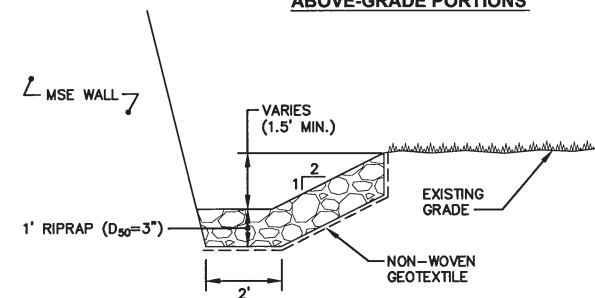
PERIMETER DITCH

SCALE: 1"=2.5'

5



ABOVE-GRADE PORTIONS



BELOW-GRADE PORTIONS

SLF 10 DITCH

SCALE: 1"=2.5'

6

GENERAL NOTE:

1. GEOSYNTHETICS IN SELECT DETAILS ARE SHOWN AT AN EXAGGERATED SCALE FOR CLARITY.

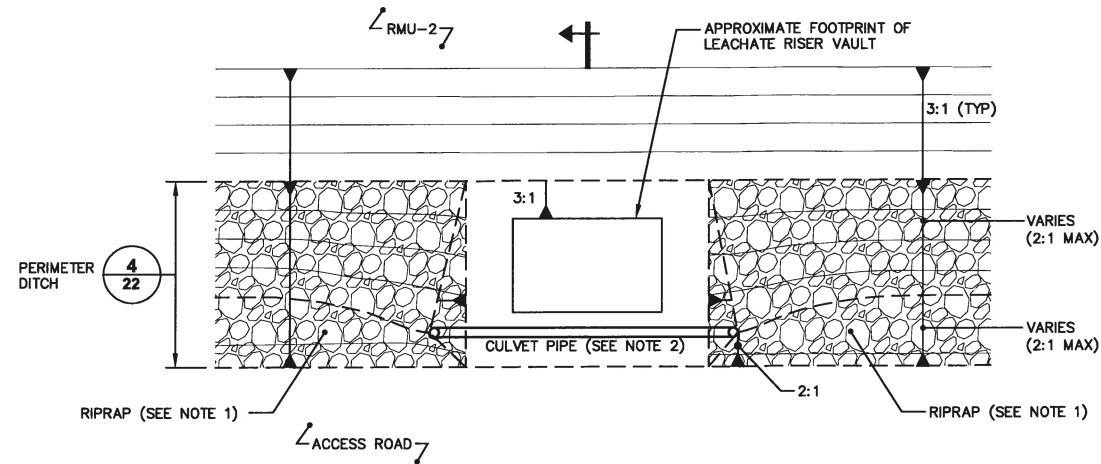
CITY: SYRACUSE DIV/GRP: ENV/CD DB: K. DAVIS K. SARTORI K. DAVIS LD: PIC: W. POPHAM PM: W. RANKIN TM: B. STONE LVR: ON=OFF=REF*
G:\ENV\CD\SYRACUSE\ACT\B0023725\2011\00003\DWGRMU_2023725\2502.dwg LAYOUT: 22 SAVED: 2/25/2013 1:32 PM ACADVER: 18.1 (LMS TECH) PAGES: 22
XREFS: IMAGES: PROJECTNAME: 23725\X00

SCALE(S) AS INDICATED																																																																																																																																																																																																																																																																																																																																																																																																																																																																																																																																																																																																																																																																																																																																																																																																																																																																																																																																																																																																																																																																																																																																																																																																																																																																																																																																																																																																																																																										</
-----------------------	--	--	--	--	--	--	--	--	--	--	--	--	--	--	--	--	--	--	--	--	--	--	--	--	--	--	--	--	--	--	--	--	--	--	--	--	--	--	--	--	--	--	--	--	--	--	--	--	--	--	--	--	--	--	--	--	--	--	--	--	--	--	--	--	--	--	--	--	--	--	--	--	--	--	--	--	--	--	--	--	--	--	--	--	--	--	--	--	--	--	--	--	--	--	--	--	--	--	--	--	--	--	--	--	--	--	--	--	--	--	--	--	--	--	--	--	--	--	--	--	--	--	--	--	--	--	--	--	--	--	--	--	--	--	--	--	--	--	--	--	--	--	--	--	--	--	--	--	--	--	--	--	--	--	--	--	--	--	--	--	--	--	--	--	--	--	--	--	--	--	--	--	--	--	--	--	--	--	--	--	--	--	--	--	--	--	--	--	--	--	--	--	--	--	--	--	--	--	--	--	--	--	--	--	--	--	--	--	--	--	--	--	--	--	--	--	--	--	--	--	--	--	--	--	--	--	--	--	--	--	--	--	--	--	--	--	--	--	--	--	--	--	--	--	--	--	--	--	--	--	--	--	--	--	--	--	--	--	--	--	--	--	--	--	--	--	--	--	--	--	--	--	--	--	--	--	--	--	--	--	--	--	--	--	--	--	--	--	--	--	--	--	--	--	--	--	--	--	--	--	--	--	--	--	--	--	--	--	--	--	--	--	--	--	--	--	--	--	--	--	--	--	--	--	--	--	--	--	--	--	--	--	--	--	--	--	--	--	--	--	--	--	--	--	--	--	--	--	--	--	--	--	--	--	--	--	--	--	--	--	--	--	--	--	--	--	--	--	--	--	--	--	--	--	--	--	--	--	--	--	--	--	--	--	--	--	--	--	--	--	--	--	--	--	--	--	--	--	--	--	--	--	--	--	--	--	--	--	--	--	--	--	--	--	--	--	--	--	--	--	--	--	--	--	--	--	--	--	--	--	--	--	--	--	--	--	--	--	--	--	--	--	--	--	--	--	--	--	--	--	--	--	--	--	--	--	--	--	--	--	--	--	--	--	--	--	--	--	--	--	--	--	--	--	--	--	--	--	--	--	--	--	--	--	--	--	--	--	--	--	--	--	--	--	--	--	--	--	--	--	--	--	--	--	--	--	--	--	--	--	--	--	--	--	--	--	--	--	--	--	--	--	--	--	--	--	--	--	--	--	--	--	--	--	--	--	--	--	--	--	--	--	--	--	--	--	--	--	--	--	--	--	--	--	--	--	--	--	--	--	--	--	--	--	--	--	--	--	--	--	--	--	--	--	--	--	--	--	--	--	--	--	--	--	--	--	--	--	--	--	--	--	--	--	--	--	--	--	--	--	--	--	--	--	--	--	--	--	--	--	--	--	--	--	--	--	--	--	--	--	--	--	--	--	--	--	--	--	--	--	--	--	--	--	--	--	--	--	--	--	--	--	--	--	--	--	--	--	--	--	--	--	--	--	--	--	--	--	--	--	--	--	--	--	--	--	--	--	--	--	--	--	--	--	--	--	--	--	--	--	--	--	--	--	--	--	--	--	--	--	--	--	--	--	--	--	--	--	--	--	--	--	--	--	--	--	--	--	--	--	--	--	--	--	--	--	--	--	--	--	--	--	--	--	--	--	--	--	--	--	--	--	--	--	--	--	--	--	--	--	--	--	--	--	--	--	--	--	--	--	--	--	--	--	--	--	--	--	--	--	--	--	--	--	--	--	--	--	--	--	--	--	--	--	--	--	--	--	--	--	--	--	--	--	--	--	--	--	--	--	--	--	--	--	--	--	--	--	--	--	--	--	--	--	--	--	--	--	--	--	--	--	--	--	--	--	--	--	--	--	--	--	--	--	--	--	--	--	--	--	--	--	--	--	--	--	--	--	--	--	--	--	--	--	--	--	--	--	--	--	--	--	--	--	--	--	--	--	--	--	--	--	--	--	--	--	--	--	--	--	--	--	--	--	--	--	--	--	--	--	--	--	--	--	--	--	--	--	--	--	--	--	--	--	--	--	--	--	--	--	--	--	--	--	--	--	--	--	--	--	--	--	--	--	--	--	--	--	--	--	--	--	--	--	--	--	--	--	--	--	--	--	--	--	--	--	--	--	--	--	--	--	--	--	--	--	--	--	--	--	--	--	--	--	--	--	--	--	--	--	--	--	--	--	--	--	--	--	--	--	--	--	--	--	--	--	--	--	--	--	--	--	--	--	--	--	--	--	--	--	--	--	--	--	--	--	--	--	--	--	--	--	--	--	--	--	--	--	--	--	--	--	--	--	--	--	--	--	--	--	--	--	--	--	--	--	--	--	--	--	--	--	--	--	--	--	--	--	--	--	--	--	--	--	--	--	--	--	--	--	--	--	--	--	--	--	--	--	--	--	--	--	--	--	--	--	--	--	--	--	--	--	--	--	--	--	--	--	--	--	--	--	--	--	--	--	--	--	--	--	--	--	--	--	--	--	--	--	--	--	--	--	--	--	--	--	--	--	--	--	--	--	--	--	--	--	--	--	--	--	--	--	--	--	--	--	--	--	--	--	--	--	--	--	--	--	--	--	--	--	--	--	--	--	--	--	--	--	--	--	--	--	--	--	--	--	--	--	--	--	--	--	--	--	--	--	--	--	--	--	--	--	--	--	--	--	--	--	--	--	--	--	--	--	--	--	--	--	--	--	--	--	--	--	--	--	--	--	--	--	--	--	--	--	--	--	--	--	--	--	--	--	--	--	--	--	--	--	--	--	--	--	--	--	--	--	--	--	--	--	--	--	--	--	--	--	--	--	--	--	--	--	--	--	--	--	--	--	--	--	--	--	--	--	--	--	--	--	--	--	--	--	--	--	--	--	--	--	--	--	--	--	--	--	--	--	--	--	--	--	--	--	--	--	--	--	--	--	--	--	--	--	--	--	--	--	--	--	--	--	--	--	--	--	--	--	--	--	--	--	--	--	--	--	--	--	--	--	--	--	--	--	--	--	--	--	--	--	--	--	--	--	--	--	--	--	--	--	--	--	--	--	--	--	--	--	--	--	--	--	--	--	--	--	--	--	--	--	--	--	--	--	--	--	--	--	--	--	--	--	--	--	--	--	--	--	--	--	--	--	--	--	--	--	--	--	--	--	--	--	--	--	--	--	--	--	--	--	--	--	--	----



CWM CHEMICAL SERVICES, LLC • MODEL CITY, NEW YORK
RESIDUALS MANAGEMENT UNIT 2 PERMIT DRAWING
SURFACE WATER MANAGEMENT DETAILS
GENERAL

ARCADIS Project No.
B0023725.2009.00006
Date
AUGUST 2009
ARCADIS of New York, Inc.
6723 Towpath Road
P.O. Box 66
Syracuse, New York
TEL. 315.446.9120

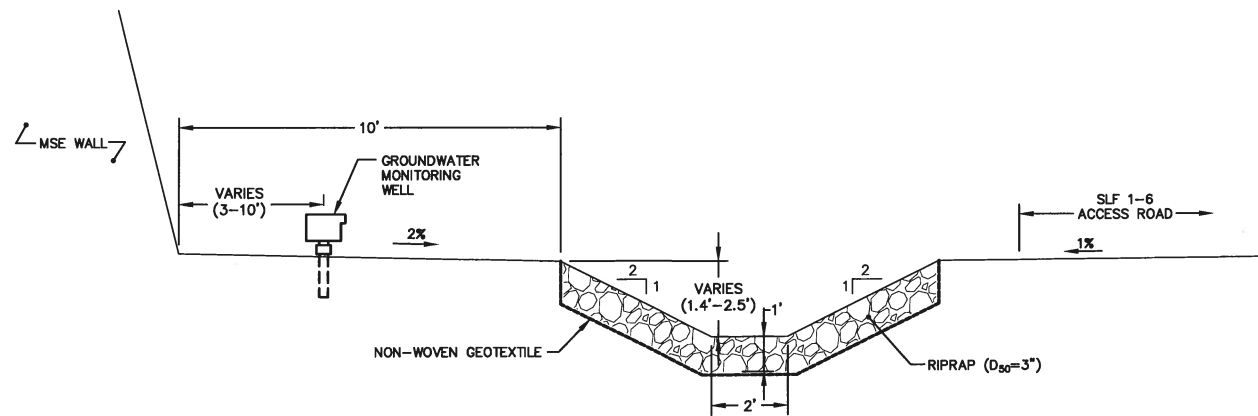
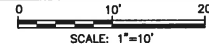


CULVERT SCHEDULE	
CULVERT ID	DESCRIPTION
CV-1	1-18-IN-DIA HDPE @ 0.3%
CV-2	1-24-IN-DIA HDPE @ 0.3%
CV-3	1-15-IN-DIA HDPE @ 0.3%
CV-4	1-24-IN-DIA HDPE @ 0.3%
CV-5	1-24-IN-DIA HDPE @ 0.3%

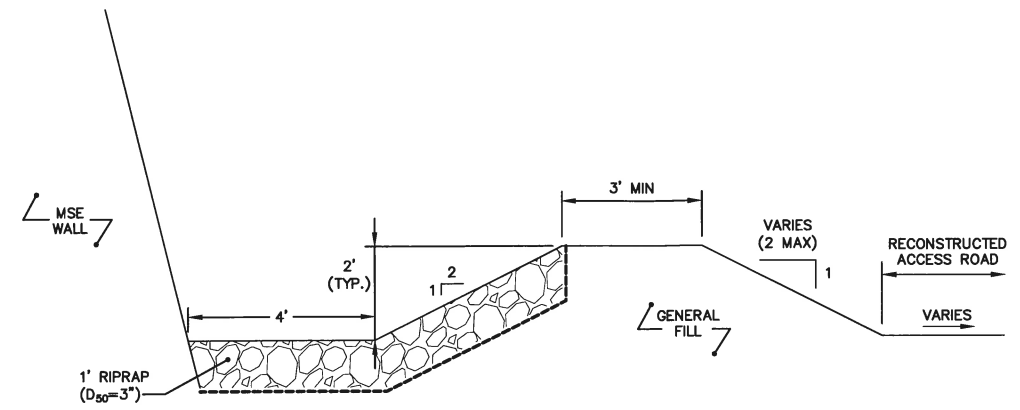
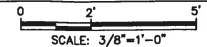
NOTES:

1. RIPRAP SHALL HAVE $D_{50}=3$ INCHES AND $D_{max}=5$ INCHES. RIPRAP SHALL BE PLACED IN A 12-INCH-THICK LAYER.
2. CULVERT PIPES SHALL BE SMOOTH-BORE CORRUGATED HDPE INSTALLED IN ACCORDANCE WITH MANUFACTURER'S RECOMMENDATIONS. REFER TO CULVERT SCHEDULE FOR PIPE DIAMETERS.

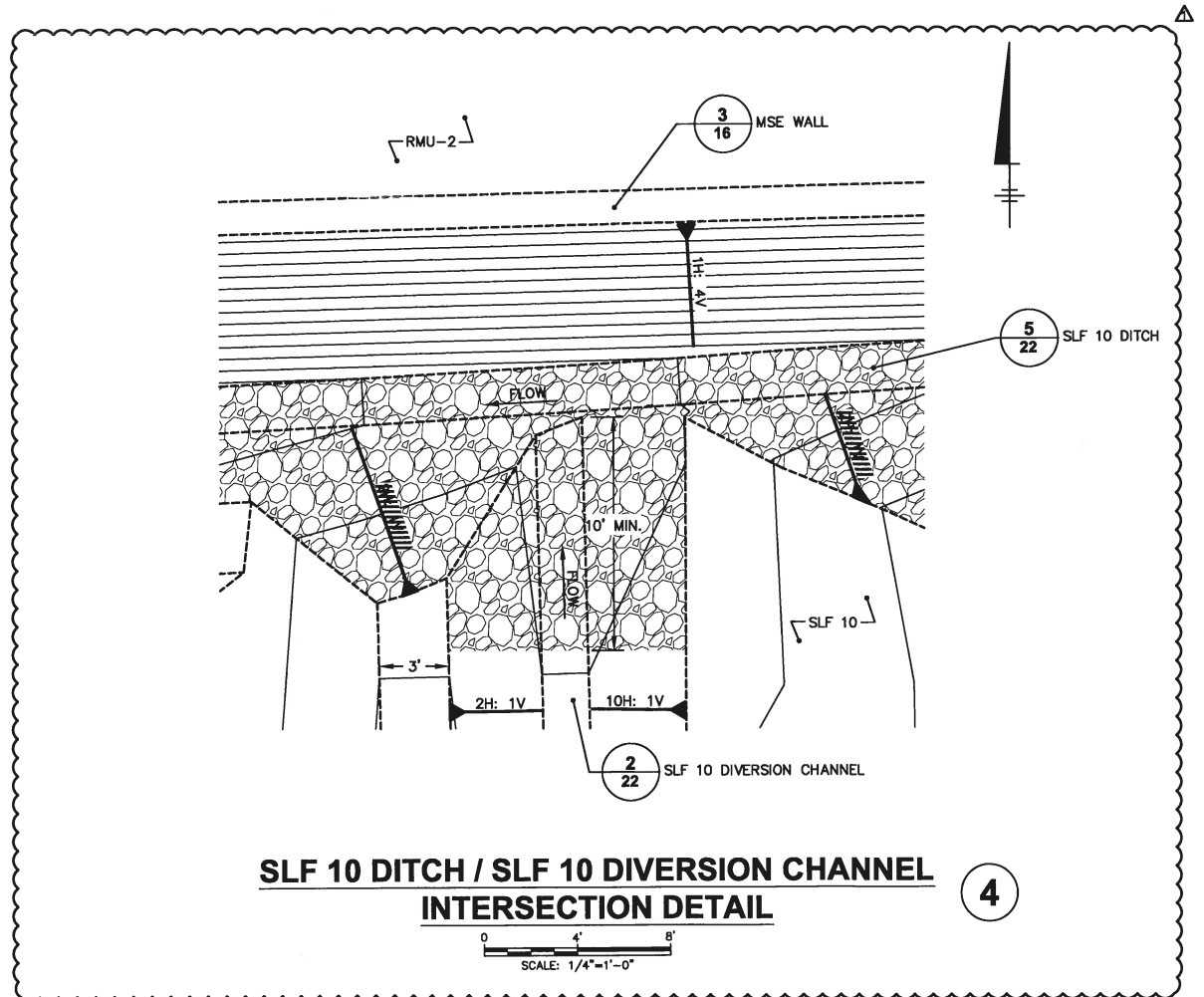
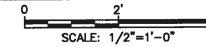
PERIMETER DITCH CULVERT DETAIL 1



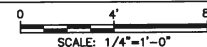
SLF 1-6 EAST PERIMETER DITCH 2



RMU-2 SOUTH DITCH 3



SLF 10 DITCH / SLF 10 DIVERSION CHANNEL INTERSECTION DETAIL 4



CITY: SYRACUSE DIV: GROUP: ENV/CAD DB: K. DAVIS G. STOWELL L. FORAKER K. SARTORI LD: PIC: W. POPHAM PM: W. RANKIN TM: B. STONE LVR: ON*OFF=REF
G:\ENV\CAD\SYRACUSE\ACT\B0023725\2017\100003\DWG\RMU_2023725\2523.dwg LAYOUT: 23 SAVED: 2/11/2013 1:18 PM ACADVER: 18.1S (LMS TECH) PAGES: 18 PAGES: 18 PAGES: 18 PAGES: 18
XREFS: 23725X00 PROJECTNAME: 1

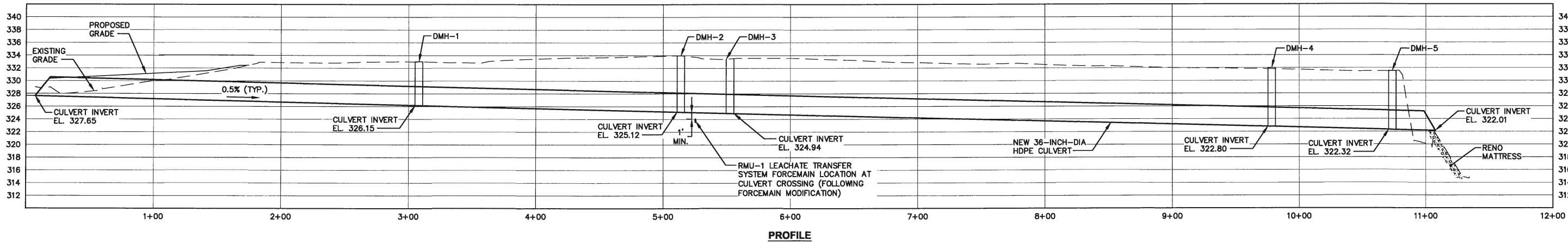
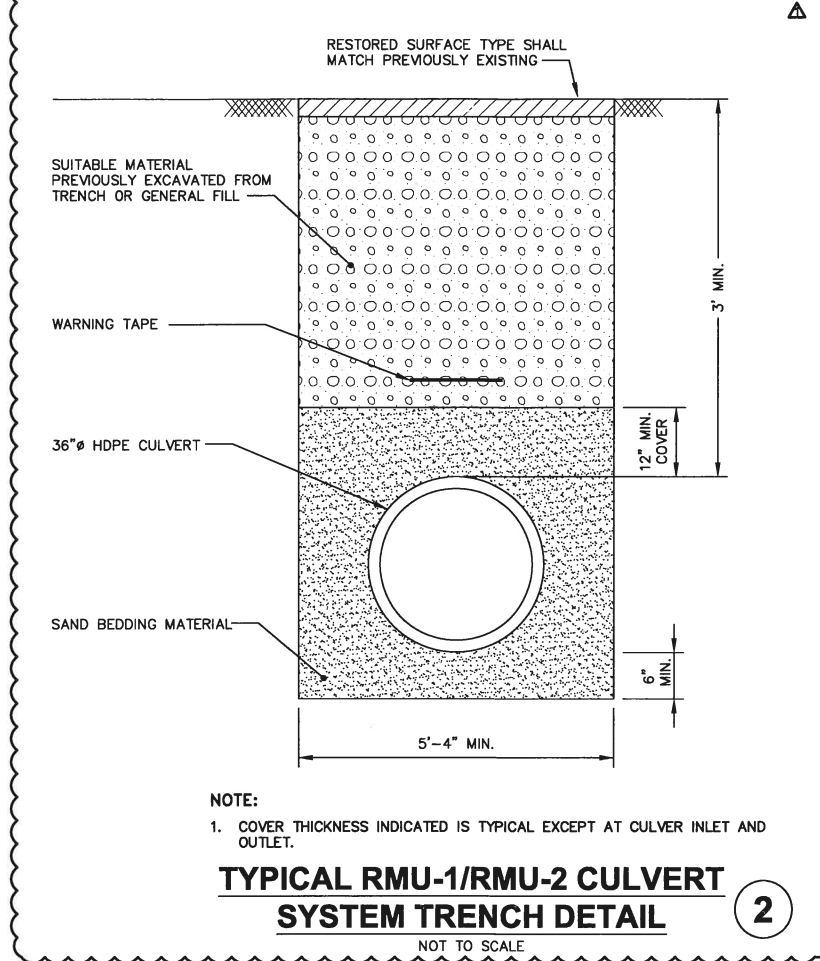
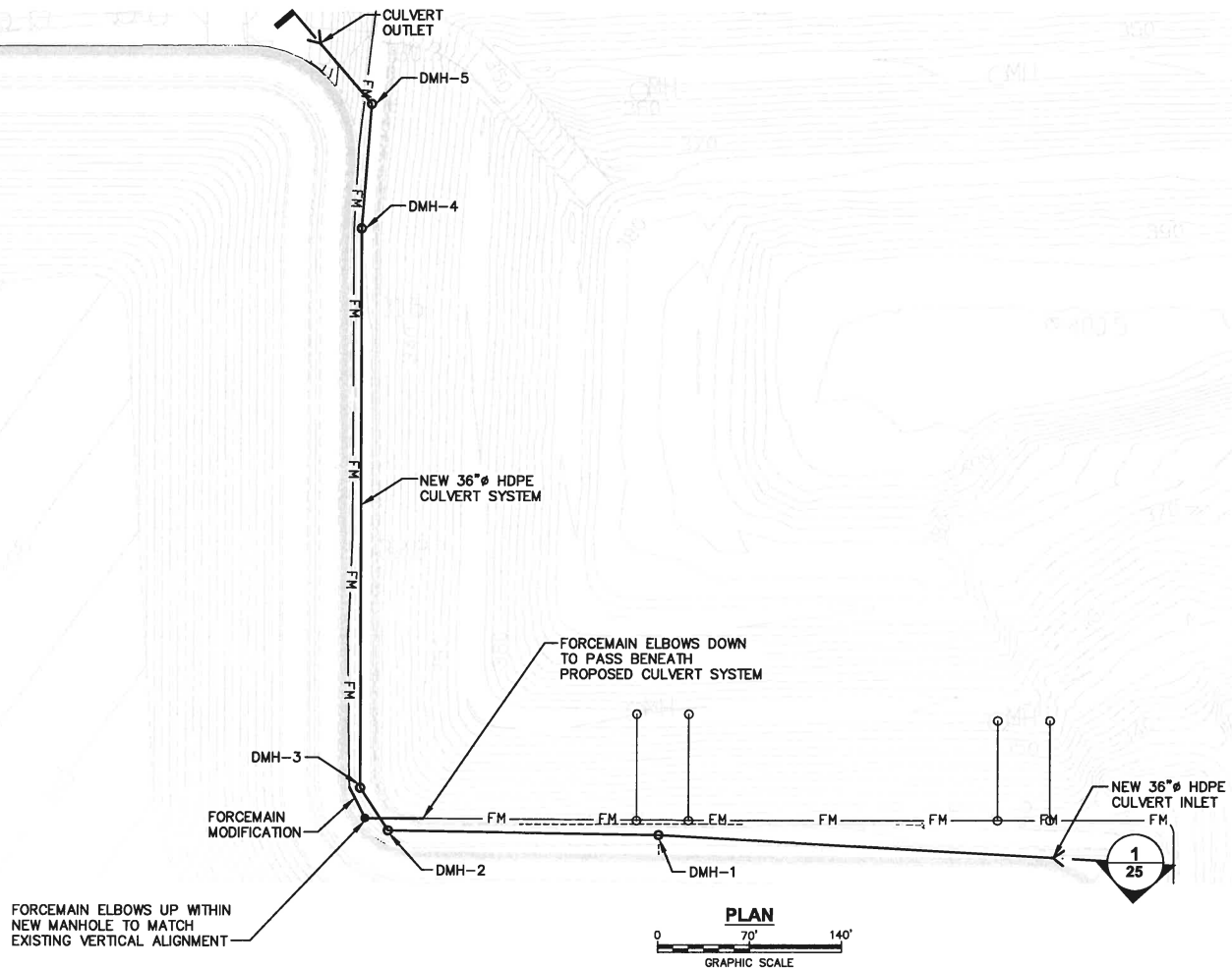
SCALE(S) AS INDICATED	
THIS BAR REPRESENTS ONE INCH ON THE ORIGINAL DRAWING:	USE TO VERIFY FIGURE REPRODUCTION SCALE
No.	Date
1	1/2012
ADDED DETAIL 4	
Revisions	PTO BMS
By	Ckd
THIS DRAWING IS THE PROPERTY OF THE ARCADIS ENTITY IDENTIFIED IN THE TITLE BLOCK AND MAY NOT BE REUSED OR ALTERED IN WHOLE OR IN PART WITHOUT THE EXPRESS WRITTEN PERMISSION OF SAME.	

Professional Engineer's Name JOSEPH MOLINA Professional Engineer's No. 072644	
State NY	Date Signed 2/27/13
Designed by BMS/PTO	Project Mgr. WAR
Drawn by SJK	Checked by BMS

ARCADIS OF NEW YORK, INC.

CWM CHEMICAL SERVICES, LLC • MODEL CITY, NEW YORK RESIDUALS MANAGEMENT UNIT 2 PERMIT DRAWING	
SURFACE WATER MANAGEMENT DETAILS	
GENERAL	
ARCADIS Project No. B0023725.2009.00006	23
Date AUGUST 2009	
ARCADIS of New York, Inc. 6723 Towpath Road P.O. Box 66 Syracuse, New York TEL: 315.446.9120	

CITY: SYRACUSE DIVISION: ENV/CAID DB: K. DAVIS L. FORAKER K. DAVIS LD: PIC: W. PORHAM PM: W. RANKIN TM: B. STONE LYR: ON=OFF=REF
G:\ENV\CAID\SYRACUSE\ACT\B0023725\201100003\DWG\RMU_2\2372502.dwg LAYOUT: 25 SAVED: 2/11/2013 1:19 PM ACADVER: 18.1S (LMS TECH) PAGES: 10 OF 10 PLOT: 2/25/2013 1:15 PM BY: SARTORI, KATHERINE
PROJECT NAME: RMU-1/RMU-2 CULVERT SYSTEM
XREFS: 23725X00 23725X05 23725X02 23725X01
IMAGES:



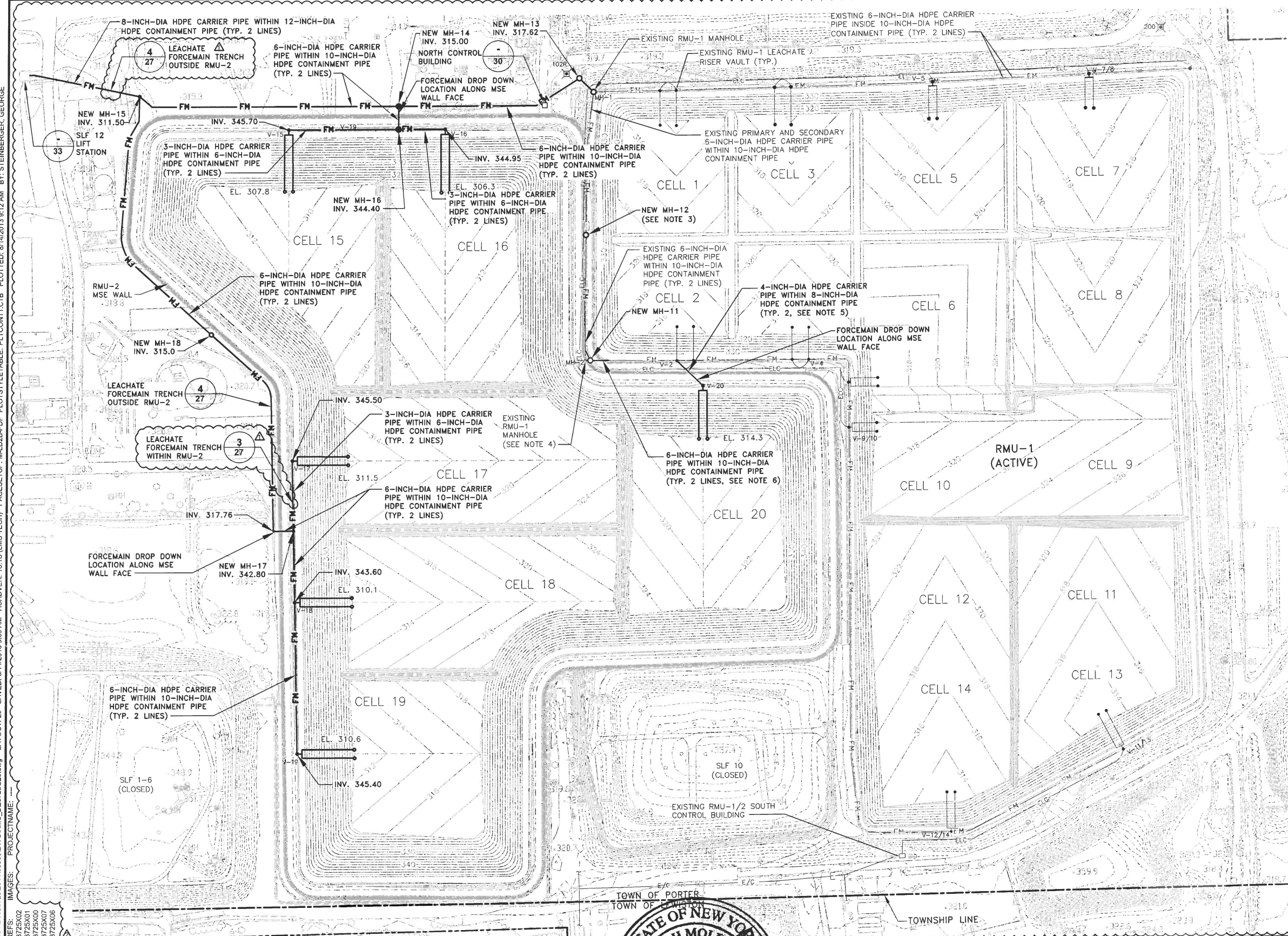
RMU-1/RMU-2 CULVERT SYSTEM

1

GENERAL NOTE:
1. NEW CULVERT SHALL BE CORRUGATED, SMOOTH-BORE HDPE PIPE.

SCALE(S) AS INDICATED		Professional Engineer's Name JOSEPH MOLINA Professional Engineer's No. 072644		State NY		Date Signed 2/21/13	Project Mgr. WAR	CWM CHEMICAL SERVICES, LLC • MODEL CITY, NEW YORK RESIDUALS MANAGEMENT UNIT 2 PERMIT DRAWING RMU-1/RMU-2 CULVERT SYSTEM PLAN AND PROFILE		ARCADIS Project No. B0023725-2009.00006 Date AUGUST 2009 ARCADIS of New York, Inc. 6723 Towpath Road P.O. Box 68 Syracuse, New York TEL. 315.446.9120		25
THIS BAR REPRESENTS ONE INCH ON THE ORIGINAL DRAWING.		USE TO VERIFY FIGURE REPRODUCTION SCALE		THIS DRAWING IS THE PROPERTY OF THE ARCADIS ENTITY IDENTIFIED IN THE TITLE BLOCK AND MAY NOT BE REPRODUCED OR ALTERED IN WHOLE OR IN PART WITHOUT THE EXPRESS WRITTEN PERMISSION OF SAME.		Designed by PDB	Drawn by SJK	Checked by BMS	GENERAL			

CITY: SYRACUSE DIV/GRUP: ENVCAD DB: K. DAVIS L. FORAKER K. DAVIS LD: PIC: W. POPHAM PM: W. RANKIN TM: B. STONE LYN: ONT-OFF=REF-
G:\ENVCAD\SYRACUSE\ACT\B0023725\01100003\DWG\RMU_2\23725G06.dwg LAYOUT: 26 SAVED: 8/14/2013 9:09 AM ACADVER: 18.15 (LMS TECH) PAGES: 27 PLOT: 8/14/2013 9:12 AM BY: STEINBERGER, GEORGE



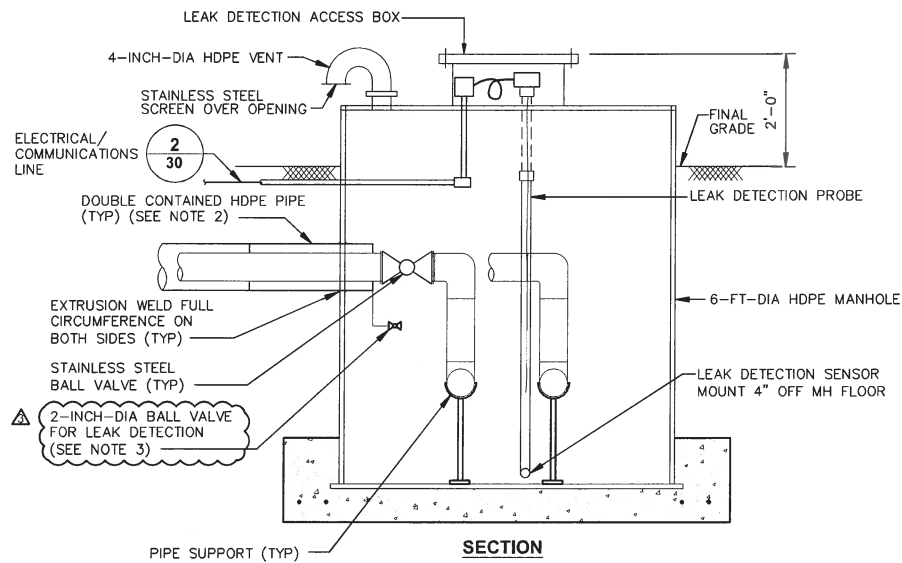
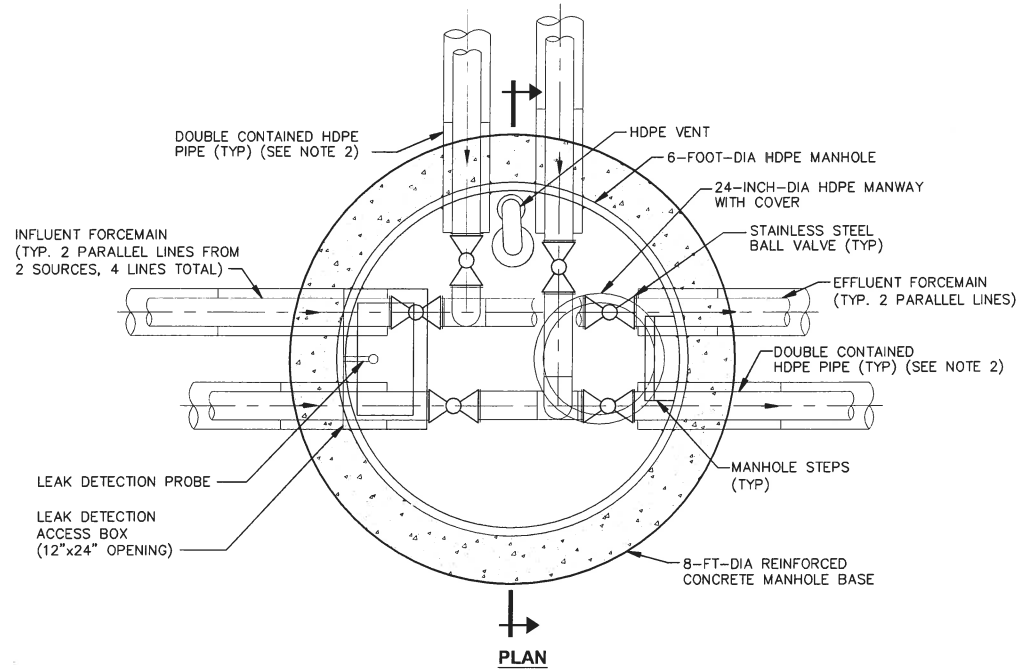
LEGEND:

- APPROXIMATE PROPERTY LINE
- TOWNSHIP LINE
- ELEVATION CONTOUR
- GRADE BREAK
- FM EXISTING FORCEMAIN
- FM PROPOSED FORCEMAIN
- EXISTING CELL LEACHATE COLLECTION SUMP AND RISER PIPE
- PROPOSED CELL LEACHATE COLLECTION SUMP AND RISER PIPE
- ELC EXISTING RMU-1 ELECTRICAL/COMMUNICATION CONDUIT
- V-16 LEACHATE RISER VAULT AND ID NO.
- LEACHATE JUNCTION MANHOLE (TYP. MH-14, MH-15, MH-16 AND MH-17)
- LEACHATE TRANSFER MANHOLE (TYP. MH-11, MH-12, MH-13 AND MH-18)
- EL 311.02 TOP OF OPERATIONS LAYER ELEVATION AT CELL LOW POINT
- 200' PERMANENT CONTROL MONUMENT
- 12500 COORDINATE GRID
- 2 • DETAIL REFERENCE NUMBER
- 14 • DRAWING REFERENCE NUMBER

- NOTES:**
- REFER TO DRAWING NO. 2 FOR ADDITIONAL BASE MAP INFORMATION.
 - PROPOSED RMU-2 GRADES SHOWN ARE TOP OF OPERATIONS LAYER GRADES (REFER TO DRAWING NO. 5). RMU-1 GRADES ARE PERMIT TOP OF OPERATIONS LAYER GRADES.
 - EXISTING RMU-1 LIFT STATION TO BE REMOVED. EXISTING FORCEMAIN TO TIE INTO NEW MH-12 NEAR FORMER LIFT STATION LOCATION.
 - EXISTING MH-2 TO BE REMOVED AND REPLACED WITH NEW MH-11 AND TIE IN WITH EXISTING FORCEMAIN.
 - RMU-2 CELL 20 LEACHATE TRANSFER SYSTEM TO TIE INTO EXISTING RMU-1 FORCEMAIN AT CELL 2 VAULT.
 - EXISTING FORCEMAINS IN RMU-1 PERIMETER BERM TO BE MODIFIED AT SOUTHWEST CORNER OF CELL 2 AS NECESSARY TO ACCOMMODATE PROPOSED RMU-1/RMU-2 CULVERT SYSTEM. REFER TO DRAWING 25 FOR ADDITIONAL INFORMATION.
 - PIPE INVERTS REPRESENT INVERT ELEVATION OF INNER CARRIER PIPE.

<p>THIS BAR REPRESENTS ONE INCH ON THE ORIGINAL DRAWING.</p>		<p>USE TO VERIFY FIGURE REPRODUCTION SCALE</p>																
<p>NO. DATE REVISIONS</p> <table border="1"><tr><td>1</td><td>8/2013</td><td>REVISED MANHOLE SYMBOL AND CALLOUTS</td><td>PTO</td><td>PHB</td></tr><tr><td>2</td><td>2/2013</td><td>REVISED FORCEMAIN LAYOUT AND SIZES</td><td>GNG</td><td>BMS</td></tr><tr><td>3</td><td>1/2012</td><td>ADDITIONAL CALLOUT</td><td>NWF</td><td>BMS</td></tr></table>		1	8/2013	REVISED MANHOLE SYMBOL AND CALLOUTS	PTO	PHB	2	2/2013	REVISED FORCEMAIN LAYOUT AND SIZES	GNG	BMS	3	1/2012	ADDITIONAL CALLOUT	NWF	BMS	<p>Professional Engineer's Name JOSEPH MOLINA Professional Engineer's No. 072644</p> <p>State NY</p> <p>Date Signed 8/15/13</p> <p>Project Mgr. WAR</p> <p>Checked by BMS</p> <p>Designed by BMS/PTO</p> <p>Drawn by SJK</p>	
1	8/2013	REVISED MANHOLE SYMBOL AND CALLOUTS	PTO	PHB														
2	2/2013	REVISED FORCEMAIN LAYOUT AND SIZES	GNG	BMS														
3	1/2012	ADDITIONAL CALLOUT	NWF	BMS														
<p>THIS DRAWING IS THE PROPERTY OF THE ARCADIS ENTITY IDENTIFIED IN THE TITLE BLOCK AND MAY NOT BE REUSED OR ALTERED IN WHOLE OR IN PART WITHOUT THE EXPRESS WRITTEN PERMISSION OF SAME.</p>		<p>STATE OF NEW YORK ARCADIS ARCADIS OF NEW YORK, INC.</p>																
<p>CWM CHEMICAL SERVICES, LLC • MODEL CITY, NEW YORK RESIDUALS MANAGEMENT UNIT 2 PERMIT DRAWING</p> <p>LEACHATE TRANSFER SYSTEM PLAN</p> <p>GENERAL</p>		<p>ARCADIS Project No. B0023725.2009.00006</p> <p>Date AUGUST 2009</p> <p>ARCADIS of New York, Inc. 6723 Towpath Road P.O. Box 66 Syracuse, New York TEL: 315.446.9120</p> <p>26</p>																

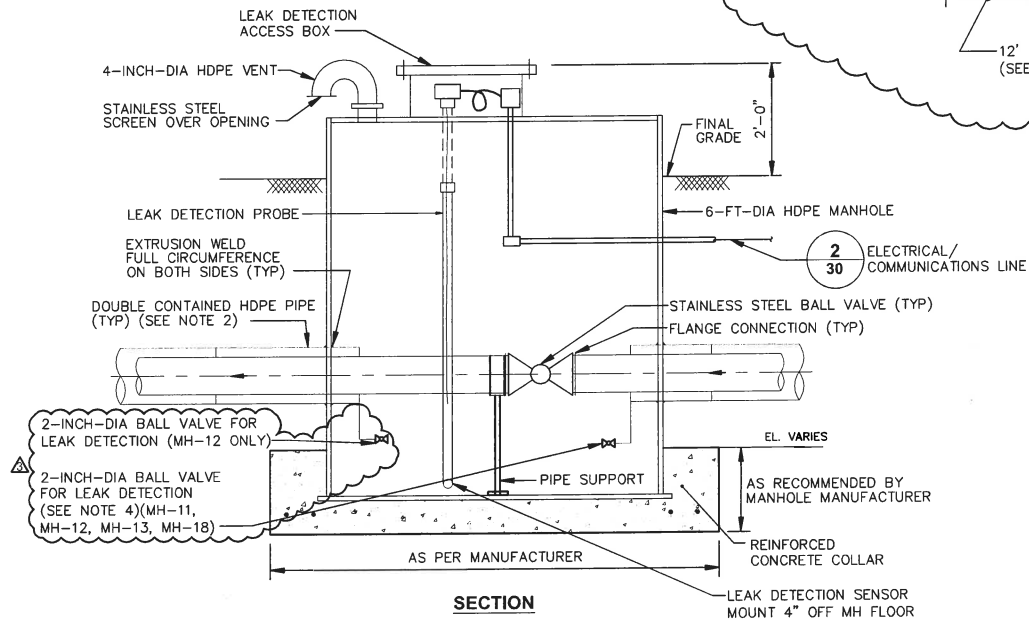
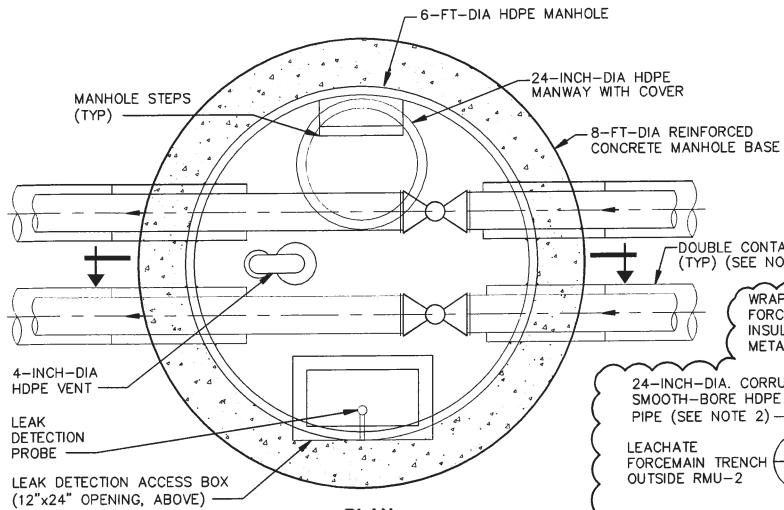
CITY: SYRACUSE DIV: GROUP: ENV: CAD DB: G. STOWELL L. FORAKER K. DAVIS LD: PIC: W. PORHAM PM: V. RANKIN TM: B. STONE LTR: ONE-OFF=REF-
G:\ENV\CAD\SYRACUSE\PROJECTS\201409232\DWG\RMU_2\23725G27.dwg LAYOUT: 27 SAVED: 8/14/2013 9:09 AM ACADVER: 18.15 (LMS TECH) PAGES: 27 PLOT: 8/14/2013 9:12 AM BY: STEINBERGER, GEORGE
PROJECTNAME: 23725X00
XREFS: 23725X00
IMAGES: 23725X00



- NOTES:
1. TYPICAL DETAIL FOR MANHOLES MH-14, MH-15, MH-16, AND MH-17. SEE DRAWING 26 FOR MANHOLE LOCATION.
 2. PIPE SIZES VARY DEPENDING ON MANHOLE LOCATION. SEE DRAWING 26 FOR PIPE SIZES.
 3. LEAK DETECTION PIPE AND VALVES INSTALLED AT LOW POINTS OF DOUBLE CONTAINED HDPE PIPE ONLY.
 4. SEAL END OF SECONDARY TRANSFER HDPE PIPE FOR TESTING PURPOSES. 1" THICK FLATSTOCK RING TO BE EXTRUSION WELDED TO BOTH PRIMARY AND SECONDARY PIPES.

TYPICAL LEACHATE JUNCTION MANHOLE

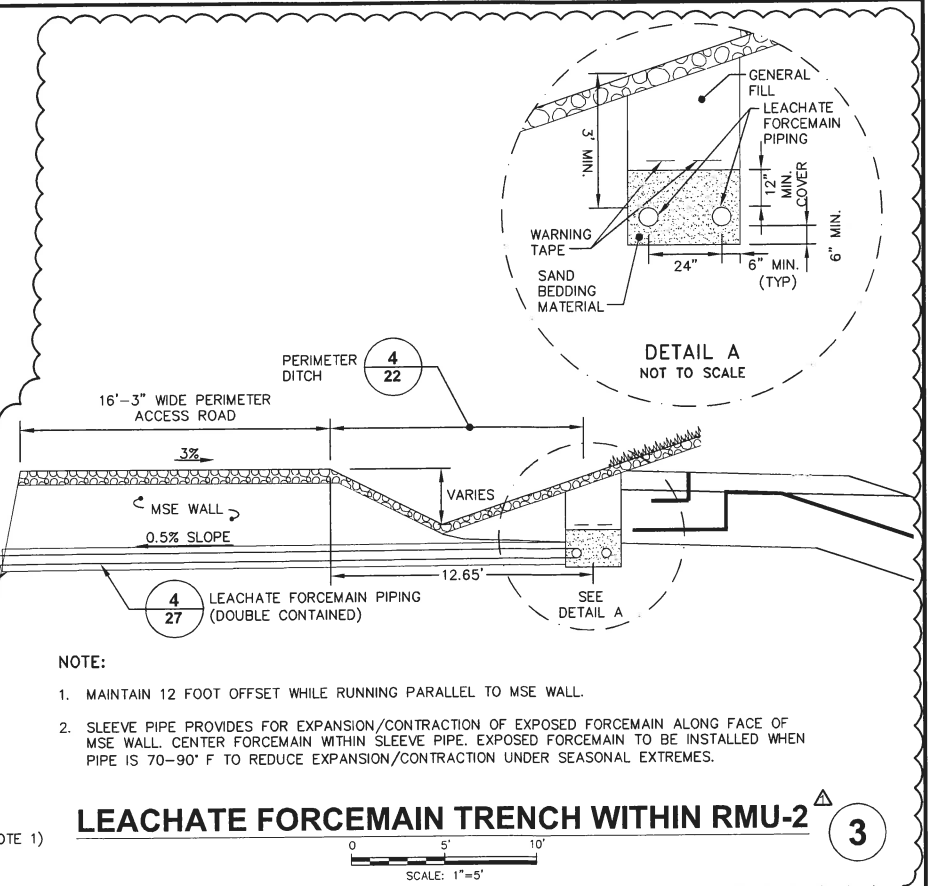
1



- NOTES:
1. TYPICAL DETAIL FOR MANHOLES MH-11, MH-12, MH-13, AND MH-18. SEE DRAWING 26 FOR MANHOLE LOCATION.
 2. PIPE SIZES VARY DEPENDING ON MANHOLE LOCATION. SEE DRAWING 26 FOR PIPE SIZES.
 3. PIPE PENETRATION AND CONFIGURATION INSIDE MANHOLES MAY VARY DEPENDING ON MANHOLE LOCATION.
 4. LEAK DETECTION PIPE AND VALVES INSTALLED AT LOW POINTS OF DOUBLE CONTAINED HDPE PIPE ONLY.
 5. SEAL END OF SECONDARY TRANSFER HDPE PIPE FOR TESTING PURPOSES. 1" THICK FLATSTOCK RING TO BE EXTRUSION WELDED TO BOTH PRIMARY AND SECONDARY PIPES.

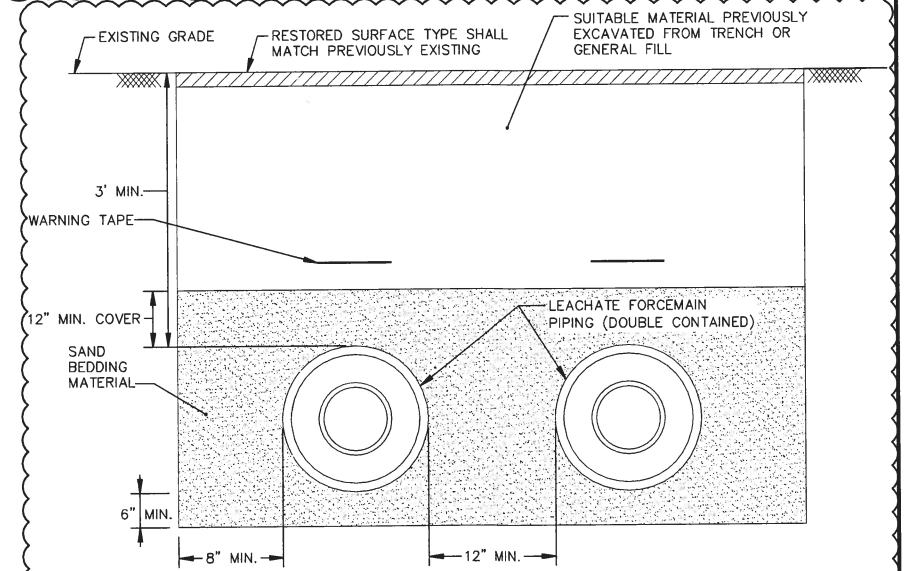
TYPICAL LEACHATE TRANSFER MANHOLE

2



LEACHATE FORCEMAIN TRENCH WITHIN RMU-2

3



LEACHATE FORCEMAIN TRENCH OUTSIDE RMU-2

4

- GENERAL NOTE:
1. ALL PIPING EXCEPT MSE WALL SLEEVE PIPE TO BE HDPE DR-11

NOT TO SCALE

THIS BAR REPRESENTS ONE INCH ON THE ORIGINAL DRAWING:

USE TO VERIFY FIGURE REPRODUCTION SCALE

No.	Date	Revisions
1	8/2013	REVISED DETAIL 1 AND 2 AND GENERAL NOTES
2	2/2013	REVISED DETAILS 1-3
3	1/2012	ADDED DETAIL 4 AND GENERAL NOTE 3

Professional Engineer's Name
JOSEPH MOLINA
Professional Engineer's No.
072644

State
NY
Date Signed
8/15/13
Project
WAR
Checked by
BMS
Designed by
BMS/PTO
Drawn by
SJK

ARCADIS
ARCADIS OF NEW YORK, INC.

CWM CHEMICAL SERVICES, LLC • MODEL CITY, NEW YORK
RESIDUALS MANAGEMENT UNIT 2 PERMIT DRAWING
LEACHATE COLLECTION AND TRANSFER SYSTEM DETAILS

GENERAL

ARCADIS Project No.
B0023725.2009.00006
Date
AUGUST 2009
ARCADIS of New York, Inc.
6723 Towpath Road
P.O. Box 66
Syracuse, New York
TEL: 315.446.9120



1



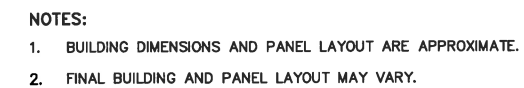
2



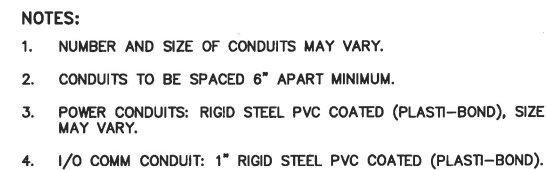
(3)

1. LINEWORK FROM AUTOMATED CONTROL SOLUTIONS, INC. 1000 YOUNG STREET, SUITE 450 TONAWANDA, NY 14150, 7/29/02 "REMOTE TRANSMITTING UNIT PANEL AND PRIMARY & SECONDARY PANEL LAYOUTS" DWG26.DWG.
2. RMU-2 CELLS 17, 18, AND 19 TO BE CONNECTED TO EXISTING RTU-RMU1-2.
3. THE PRIMARY/SECONDARY REMOTE CONTROL PANEL TO BE INSTALLED WITHIN EACH RMU-2 CELL RISER VAULT. "X" DESIGNATION IDENTIFIES SPECIFIC CELL THAT PANEL CONTROLS.

29



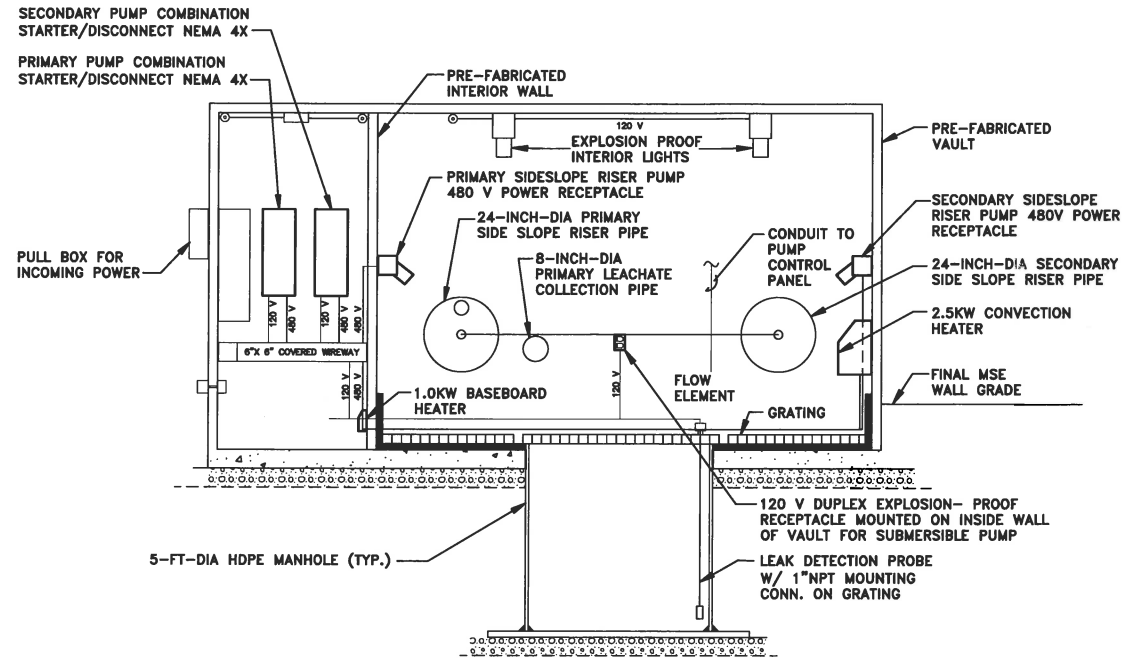
SECTION A-A'



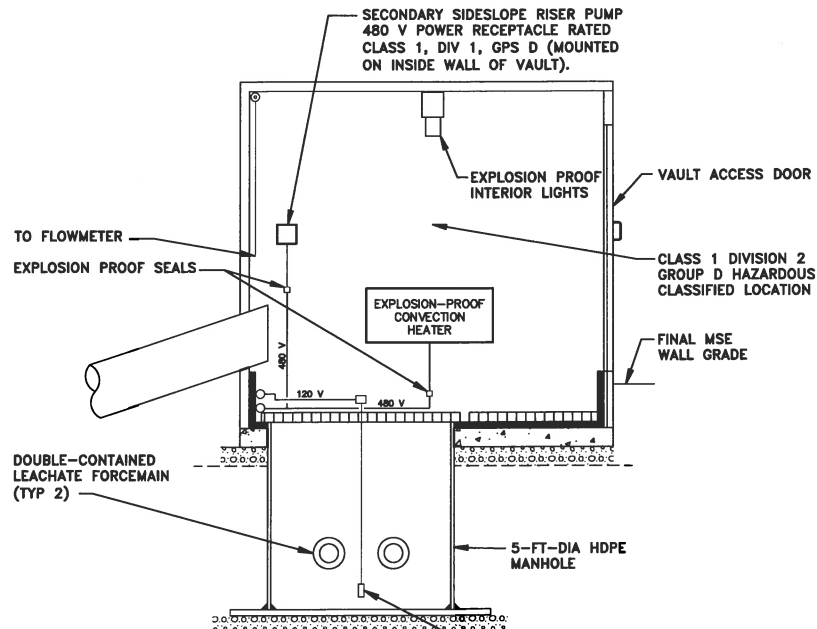
TYPICAL UNDERGROUND CONDUIT INSTALLATION DETAIL

NOT TO SCALE																																																																																																																																																																																																																																																																																																																																																																																																																																																																																																																																																																																																																																																																																																																																																																																																																																																																																																																																																																																																																																																																																																																																																																																																																																																																																																																																																																																																																				
--------------	--	--	--	--	--	--	--	--	--	--	--	--	--	--	--	--	--	--	--	--	--	--	--	--	--	--	--	--	--	--	--	--	--	--	--	--	--	--	--	--	--	--	--	--	--	--	--	--	--	--	--	--	--	--	--	--	--	--	--	--	--	--	--	--	--	--	--	--	--	--	--	--	--	--	--	--	--	--	--	--	--	--	--	--	--	--	--	--	--	--	--	--	--	--	--	--	--	--	--	--	--	--	--	--	--	--	--	--	--	--	--	--	--	--	--	--	--	--	--	--	--	--	--	--	--	--	--	--	--	--	--	--	--	--	--	--	--	--	--	--	--	--	--	--	--	--	--	--	--	--	--	--	--	--	--	--	--	--	--	--	--	--	--	--	--	--	--	--	--	--	--	--	--	--	--	--	--	--	--	--	--	--	--	--	--	--	--	--	--	--	--	--	--	--	--	--	--	--	--	--	--	--	--	--	--	--	--	--	--	--	--	--	--	--	--	--	--	--	--	--	--	--	--	--	--	--	--	--	--	--	--	--	--	--	--	--	--	--	--	--	--	--	--	--	--	--	--	--	--	--	--	--	--	--	--	--	--	--	--	--	--	--	--	--	--	--	--	--	--	--	--	--	--	--	--	--	--	--	--	--	--	--	--	--	--	--	--	--	--	--	--	--	--	--	--	--	--	--	--	--	--	--	--	--	--	--	--	--	--	--	--	--	--	--	--	--	--	--	--	--	--	--	--	--	--	--	--	--	--	--	--	--	--	--	--	--	--	--	--	--	--	--	--	--	--	--	--	--	--	--	--	--	--	--	--	--	--	--	--	--	--	--	--	--	--	--	--	--	--	--	--	--	--	--	--	--	--	--	--	--	--	--	--	--	--	--	--	--	--	--	--	--	--	--	--	--	--	--	--	--	--	--	--	--	--	--	--	--	--	--	--	--	--	--	--	--	--	--	--	--	--	--	--	--	--	--	--	--	--	--	--	--	--	--	--	--	--	--	--	--	--	--	--	--	--	--	--	--	--	--	--	--	--	--	--	--	--	--	--	--	--	--	--	--	--	--	--	--	--	--	--	--	--	--	--	--	--	--	--	--	--	--	--	--	--	--	--	--	--	--	--	--	--	--	--	--	--	--	--	--	--	--	--	--	--	--	--	--	--	--	--	--	--	--	--	--	--	--	--	--	--	--	--	--	--	--	--	--	--	--	--	--	--	--	--	--	--	--	--	--	--	--	--	--	--	--	--	--	--	--	--	--	--	--	--	--	--	--	--	--	--	--	--	--	--	--	--	--	--	--	--	--	--	--	--	--	--	--	--	--	--	--	--	--	--	--	--	--	--	--	--	--	--	--	--	--	--	--	--	--	--	--	--	--	--	--	--	--	--	--	--	--	--	--	--	--	--	--	--	--	--	--	--	--	--	--	--	--	--	--	--	--	--	--	--	--	--	--	--	--	--	--	--	--	--	--	--	--	--	--	--	--	--	--	--	--	--	--	--	--	--	--	--	--	--	--	--	--	--	--	--	--	--	--	--	--	--	--	--	--	--	--	--	--	--	--	--	--	--	--	--	--	--	--	--	--	--	--	--	--	--	--	--	--	--	--	--	--	--	--	--	--	--	--	--	--	--	--	--	--	--	--	--	--	--	--	--	--	--	--	--	--	--	--	--	--	--	--	--	--	--	--	--	--	--	--	--	--	--	--	--	--	--	--	--	--	--	--	--	--	--	--	--	--	--	--	--	--	--	--	--	--	--	--	--	--	--	--	--	--	--	--	--	--	--	--	--	--	--	--	--	--	--	--	--	--	--	--	--	--	--	--	--	--	--	--	--	--	--	--	--	--	--	--	--	--	--	--	--	--	--	--	--	--	--	--	--	--	--	--	--	--	--	--	--	--	--	--	--	--	--	--	--	--	--	--	--	--	--	--	--	--	--	--	--	--	--	--	--	--	--	--	--	--	--	--	--	--	--	--	--	--	--	--	--	--	--	--	--	--	--	--	--	--	--	--	--	--	--	--	--	--	--	--	--	--	--	--	--	--	--	--	--	--	--	--	--	--	--	--	--	--	--	--	--	--	--	--	--	--	--	--	--	--	--	--	--	--	--	--	--	--	--	--	--	--	--	--	--	--	--	--	--	--	--	--	--	--	--	--	--	--	--	--	--	--	--	--	--	--	--	--	--	--	--	--	--	--	--	--	--	--	--	--	--	--	--	--	--	--	--	--	--	--	--	--	--	--	--	--	--	--	--	--	--	--	--	--	--	--	--	--	--	--	--	--	--	--	--	--	--	--	--	--	--	--	--	--	--	--	--	--	--	--	--	--	--	--	--	--	--	--	--	--	--	--	--	--	--	--	--	--	--	--	--	--	--	--	--	--	--	--	--	--	--	--	--	--	--	--	--	--	--	--	--	--	--	--	--	--	--	--	--	--	--	--	--	--	--	--	--	--	--	--	--	--	--	--	--	--	--	--	--	--	--	--	--	--	--	--	--	--	--	--	--	--	--	--	--	--	--	--	--	--	--	--	--	--	--	--	--	--	--	--	--	--	--	--	--	--	--	--	--	--	--	--	--	--	--	--	--	--	--	--	--	--	--	--	--	--	--	--	--	--	--	--	--	--	--	--	--	--	--	--	--	--	--	--	--	--	--	--	--	--	--	--	--	--	--	--	--	--	--	--	--	--	--	--	--	--	--	--	--	--	--	--	--	--	--	--	--	--	--	--	--	--	--	--	--	--	--	--	--	--	--	--	--	--	--	--	--	--	--	--	--	--	--	--	--	--	--	--	--	--	--	--	--	--	--	--	--	--	--	--	--	--	--	--	--	--	--	--	--	--	--	--	--	--	--	--	--	--	--	--	--	--	--	--	--	--	--	--	--	--	--	--	--	--	--	--	--	--	--	--	--	--	--	--	--	--	--	--	--	--	--	--	--	--	--	--	--	--	--	--	--	--	--	--	--	--	--	--	--	--	--	--	--	--	--	--	--	--	--	--	--	--	--	--	--	--	--	--	--	--	--	--	--	--	--	--	--	--	--	--	--	--	--	--	--	--	--	--	--	--	--	--	--	--	--	--	--	--	--	--

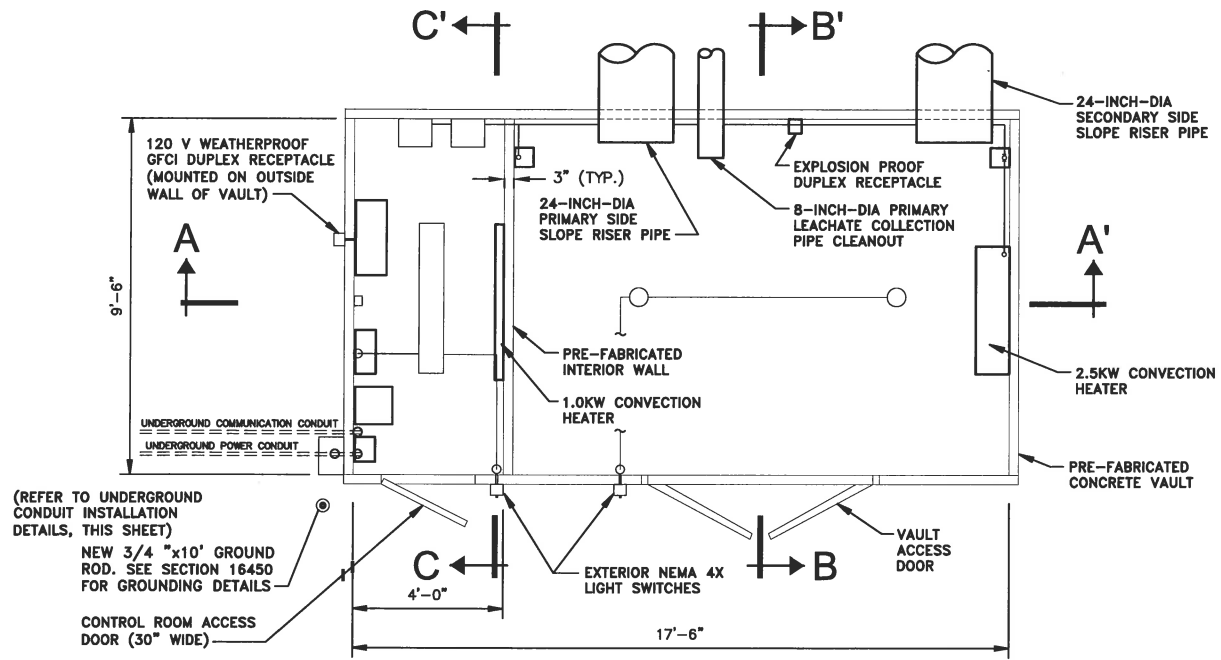
CITY: SYRACUSE DIV/GROUP: ENV/CAD DB: K. DAVIS L. FORAKER K. DAVIS LD: PIC: W. POPHAM PM: W. RANKIN TM: B. STONE LVR: ON=OFF=REF
G:\ENV\CAD\SYRACUSE\ACT\B0023725\2011\0003\DWG\RMU_2\23725G31.DWG LAYOUT: 31 SAVED: 28/2013 3:28 PM ACADVER: 18.1 (LMS TECH) PAGES: 1/1 PLOT: 2/25/2013 1:15 PM BY: SARTORI, KATHERINE
PROJECTNAME: 23725X00
XREFS: IMAGES: 23725X00



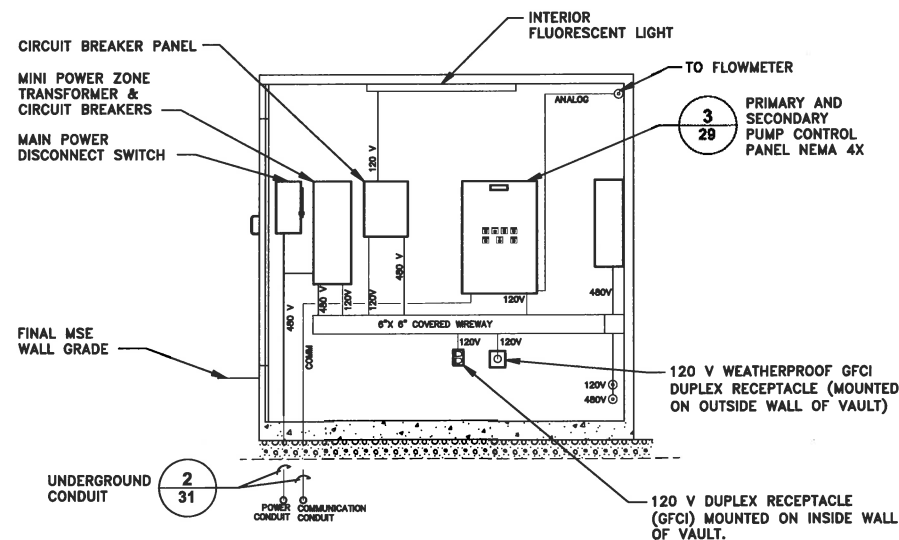
SECTION A-A'



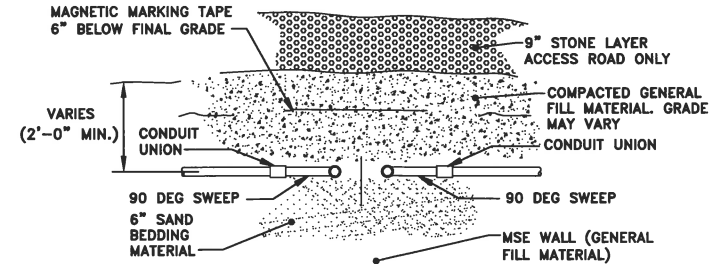
SECTION B-B'



PLAN 1

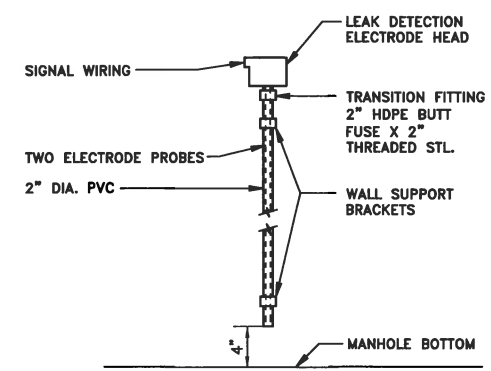


SECTION C-C'



- NOTES:
1. NUMBER AND SIZE OF CONDUITS MAY VARY.
 2. CONDUITS TO BE SPACED 6" APART MINIMUM.
 3. POWER CONDUITS: RIGID STEEL PVC COATED (PLASTI-BOND). SIZE MAY VARY.
 4. I/O COMMUNICATION CONDUIT: 1" RIGID STEEL PVC COATED (PLASTI-BOND).

MSE WALL UNDERGROUND CONDUIT INSTALLATION DETAILS



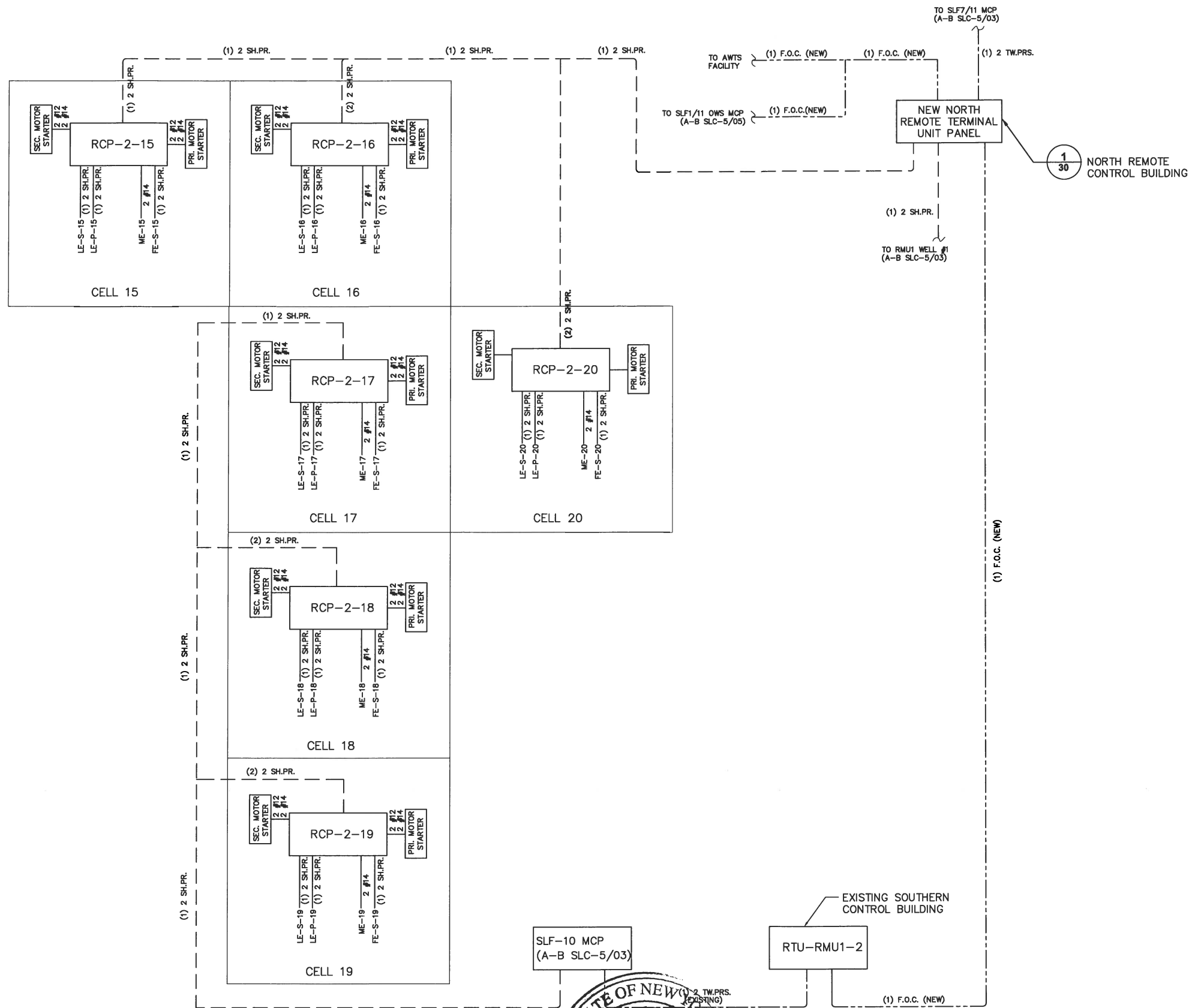
- NOTES:
1. MOUNT PROBE FITTING 6" ABOVE GRATING IN RISER VAULTS.
 2. EXTEND ELECTRODES TO 1/2" ABOVE BOTTOM OF 2" HDPE PIPE.

RISER VAULT LEAK DETECTION DETAIL

- GENERAL NOTES:
1. LINWORK FROM AUTOMATED CONTROL SOLUTIONS, INC. 1000 YOUNG STREET, SUITE 450 TONAWANDA, NY 14150, 4/2/02 "RMU-2 RISER VAULT ELECTRICAL DIAGRAM AND DETAILS" DWG27.DWG.
 2. LOCATE VAULT LEAK DETECTION PROBE ON INLET SIDE OF LEACHATE COLLECTION HDPE MANHOLE. MOUNT PROBE 4" FROM FLOOR.
 3. ALL CONDUIT TO BE RUN AGAINST WALLS NEAR GRATING OR HIGH NEAR CEILING CORNERS, AS APPROPRIATE. USE CONDUIT SEALS PER N.E.C. ARTICLE 500 FOR ALL CONDUITS IN THE MAIN PUMPING AREA OF THE RISER VAULT.
 4. REFER TO ELECTRICAL SPECIFICATIONS FOR CONDUIT AND CABLE INFORMATION.
 5. REFER TO DRAWING 28 FOR RISER VAULT MECHANICAL DETAILS.

SCALE AS NOTED		Professional Engineer's Name JOSEPH MOLINA Professional Engineer's No. 072644		State NY		Date Signed 2/27/13	Project Mgr. WAR	Checked by TPA		Designed by ACS, INC.		Drawn by LAF		Professional Engineer's Seal JOSEPH MOLINA 072644		ARCADIS ARCADIS OF NEW YORK, INC.		CH2M CHEMICAL SERVICES, LLC • MODEL CITY, NEW YORK RESIDUALS MANAGEMENT UNIT 2 PERMIT DRAWING RMU-2 RISER VAULT ELECTRICAL DIAGRAM AND DETAILS GENERAL		ARCADIS Project No. B0023725.2009.00006 Date AUGUST 2009 ARCADIS of New York, Inc. 6723 Tawpath Road P.O. Box 66 Syracuse, New York TEL. 315.446.9120		31	
THIS BAR REPRESENTS ONE INCH ON THE ORIGINAL DRAWING.		USE TO VERIFY FIGURE REPRODUCTION SCALE		THIS DRAWING IS THE PROPERTY OF THE ARCADIS ENTITY IDENTIFIED IN THE TITLE BLOCK AND MAY NOT BE REUSED OR ALTERED IN WHOLE OR IN PART WITHOUT THE EXPRESS WRITTEN PERMISSION OF SAME.																			

CITY: SYRACUSE DIV:GROUP: ENVCAD DB: L. FORAKER K. DAVIS LD: PIC: W. POPHAM PM: W. RANKIN TM: B. STONE LVR: ON="OFF"="REF" XREFS: 22725X00 IMAGES: PROJECTNAME: PLTCONT1.CTB PLOTTED: 2/25/2013 1:18 PM BY: SARTORI, KATHERINE PAGESETUP: M-LD25-PDF PLOTSTYLETABLE: PLT01.ctb



GENERAL NOTES:

1. LINWORK FROM AUTOMATED CONTROL SOLUTIONS, INC. 1000 YOUNG STREET, SUITE 450 TONAWANDA, NY 14150, 6/10/02 "RMU2 INSTRUMENT RISER DIAGRAM" DWG28.DWG.
2. THIS DRAWING SHOWS PROCESS INSTRUMENTATION AND CONTROL WIRING REQUIREMENTS. ASSOCIATED AC POWER AND GROUNDING CONDUCTORS ARE NOT SHOWN. CONTRACTOR SHALL BE RESPONSIBLE FOR ALL WIRING, WHETHER SHOWN OR NOT, NECESSARY FOR A COMPLETE AND OPERABLE SYSTEM.
3. ALL SHIELDED AND UNSHIELDED CONDUCTORS SHALL BE RUN IN CONDUIT. SHIELDED CONDUCTORS SHALL NOT BE COMBINED WITH UNSHIELDED CONDUCTORS IN ANY CONDUIT. NEITHER SHIELDED NOR UNSHIELDED CONDUCTORS SHALL BE INCLUDED IN THE SAME CONDUIT AS THREE PHASE POWER.
4. THIS DRAWING DOES NOT SHOW CONDUIT SYSTEMS. PROVIDE, AS A MINIMUM, PULL BOXES AS RECOMMENDED BY CONDUCTOR MANUFACTURER. CONDUIT SHALL NOT BE USED AS PULL BOX.
5. CONDUIT SHALL BE SIZED FOR CONDUCTORS SHOWN PLUS REQUIRED SPARES.
6. CONDUCTORS SHALL NOT BE SPLICED EXCEPT AT TERMINALS.

LIST OF ABBREVIATIONS:

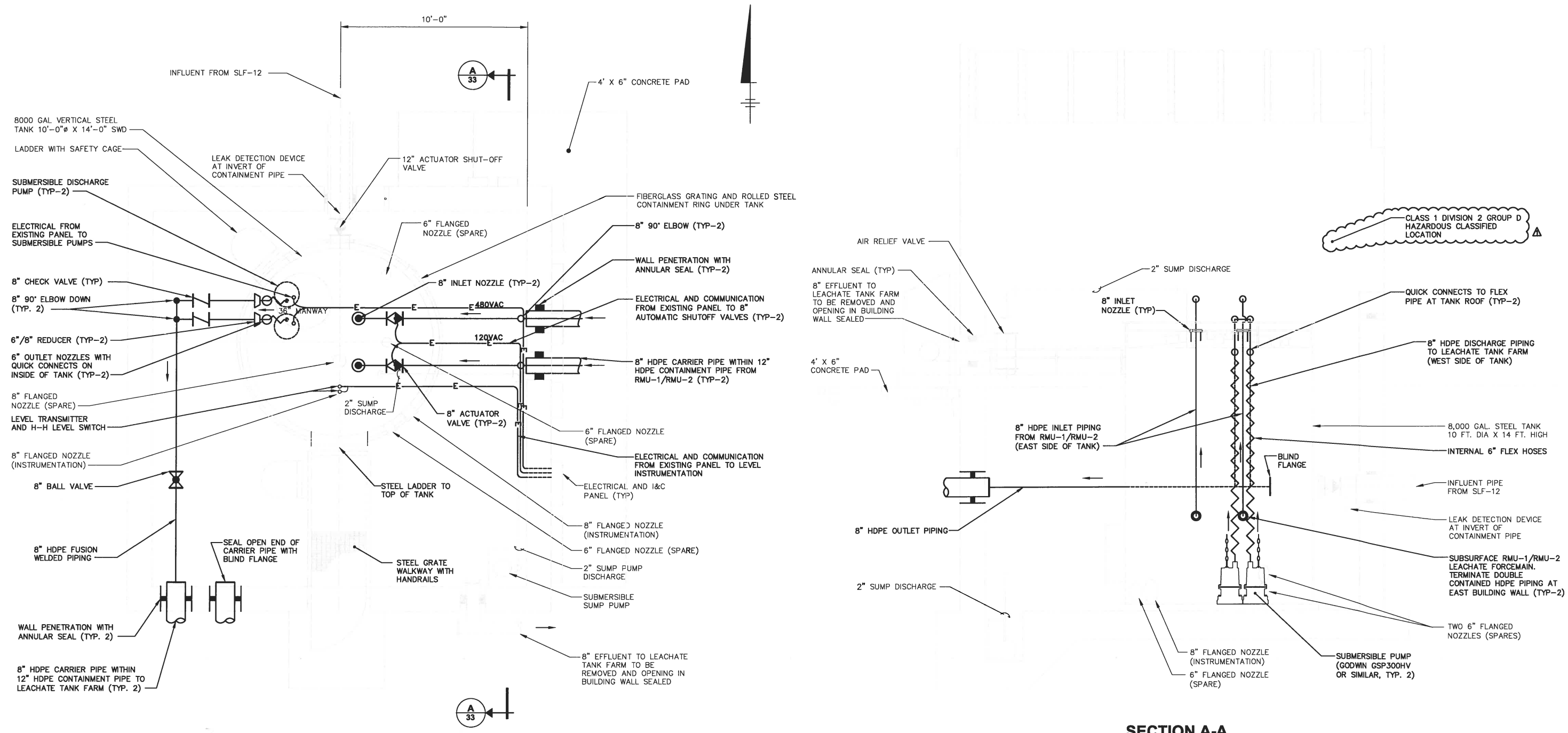
- FE - FLOW ELEMENT
FV - FLOW VALVE
LE - LEVEL ELEMENT
ME - MOISTURE ELEMENT
PRI - PRIMARY (RISER)
SEC - SECONDARY (RISER)

LEGEND:

- () #12 (QUANTITY) #12 THWN CONDUCTORS
() #14 (QUANTITY) #14 THWN CONDUCTORS
() SH. PR. (QUANTITY) SHIELDED PAIR (DUPLINE DATA HIGHWAY)
() 2 TW PRS (QUANTITY) 2 TWISTED PAIRS CABLE (RS-485 DATA HIGHWAY)
() F.O.C. (QUANTITY) FIBER OPTIC CABLE (FULL DUPLEX, MULTI-MODE)

NOT TO SCALE		THIS BAR REPRESENTS ONE INCH ON THE ORIGINAL DRAWING:		USE TO VERIFY FIGURE REPRODUCTION SCALE	
No.	Date	Revisions	By	Ckd	
THIS DRAWING IS THE PROPERTY OF THE ARCADIS ENTITY IDENTIFIED IN THE TITLE BLOCK AND MAY NOT BE REUSED OR ALTERED IN WHOLE OR IN PART WITHOUT THE EXPRESS WRITTEN PERMISSION OF SAME.					
Professional Engineer's Name JOSEPH MOLINA Professional Engineer's No. 072644			State NY Date Signed 2/27/10 Project Mgr. WAR Checked by TPA		
Designed by ACS, INC.			Drawn by LAF		
CWM CHEMICAL SERVICES, LLC • MODEL CITY, NEW YORK RESIDUALS MANAGEMENT UNIT 2 PERMIT DRAWING					
ARCADIS OF NEW YORK, INC.					
ARCADIS Project No. B0023725.2009.00006 Date AUGUST 2009 ARCADIS of New York, Inc. 6723 Tawpath Road P.O. Box 66 Syracuse, New York TEL. 315.446.9120					



CITY: SYRACUSE DIV: GROUP: ENV/CAD DB: K. DAVIS G. STOWELL L. FORAKER LD: PIC: W. POPHAM PM: W. RANKIN TM: B. STONE LVR: ON=OFF=REF*
G:\ENV\CAD\SYRACUSE\ACT\B0023725\201100003\DWG\RMU_2\23725533.dwg LAYOUT: 33 SAVER: 2/18/2013 9:36 AM ACADVER: 18.1S (LMS TECH) PAGES: 18 PLOTTED: 2/25/2013 1:16 PM BY: SARTORI, KATHERINE
PROJECTNAME: 23725X00
XREFS: 23725X00
IMAGES:

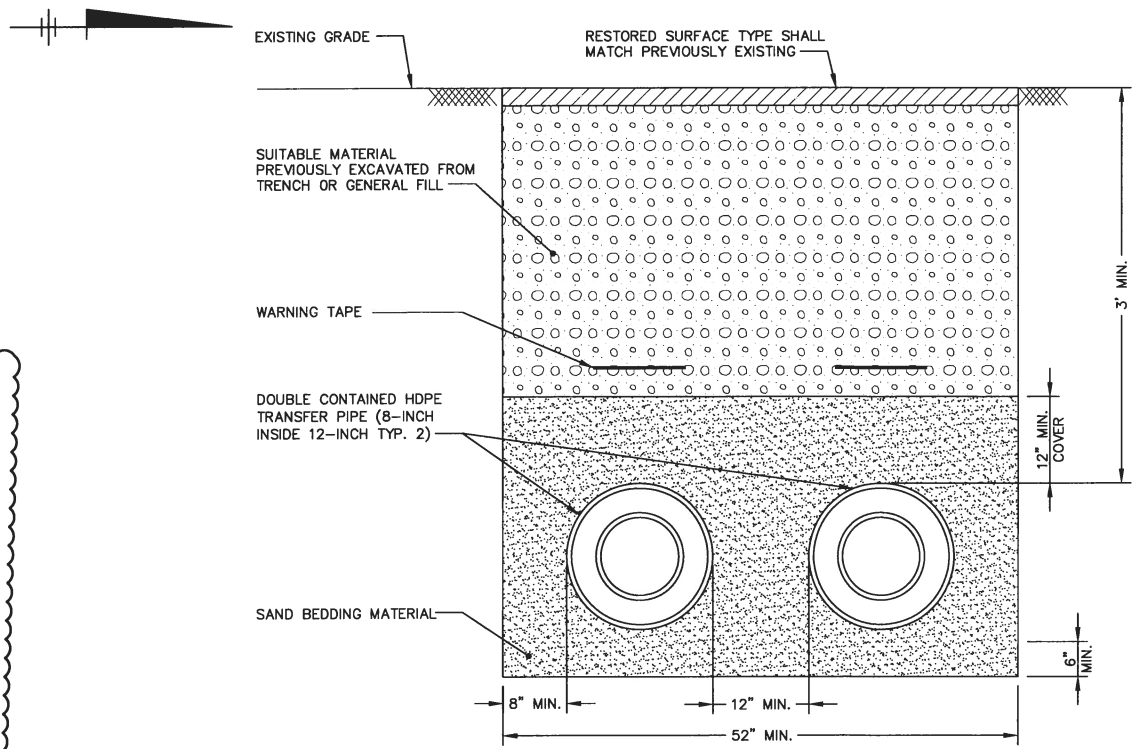
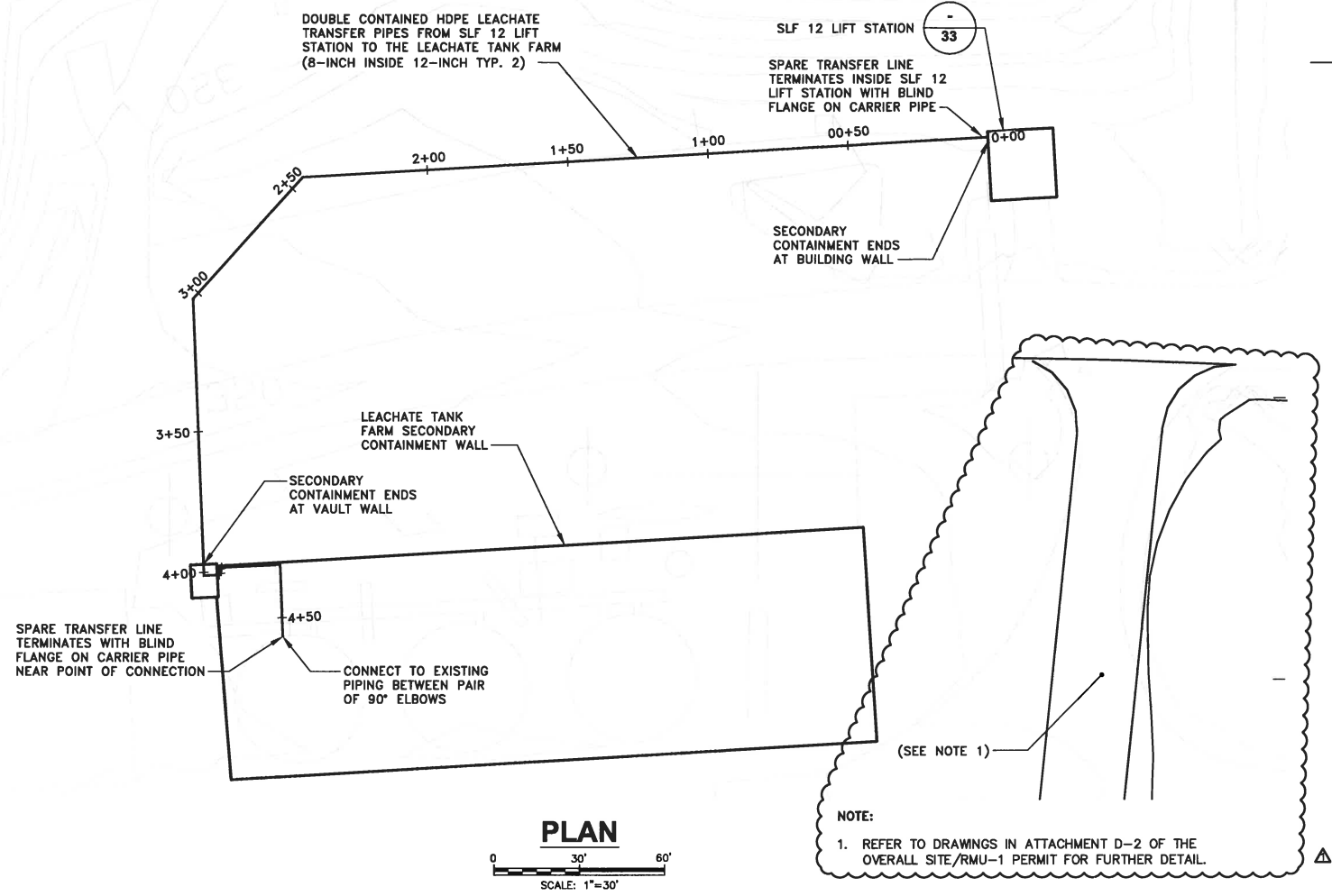


PROCESS PLAN

NOTES:

- BASEMAP INFORMATION ON THIS DRAWING WAS DIGITIZED FROM A PHOTOCOPY PROVIDED BY CWM.
- EXISTING TANK DISCHARGE LINES NOT SHOWN FOR CLARITY.
- EXISTING TANK DISCHARGE LINES (INCLUDING PIPES, VALVES, PUMPS, ETC.) TO BE REMOVED AND REPLACED AS REQUIRED.

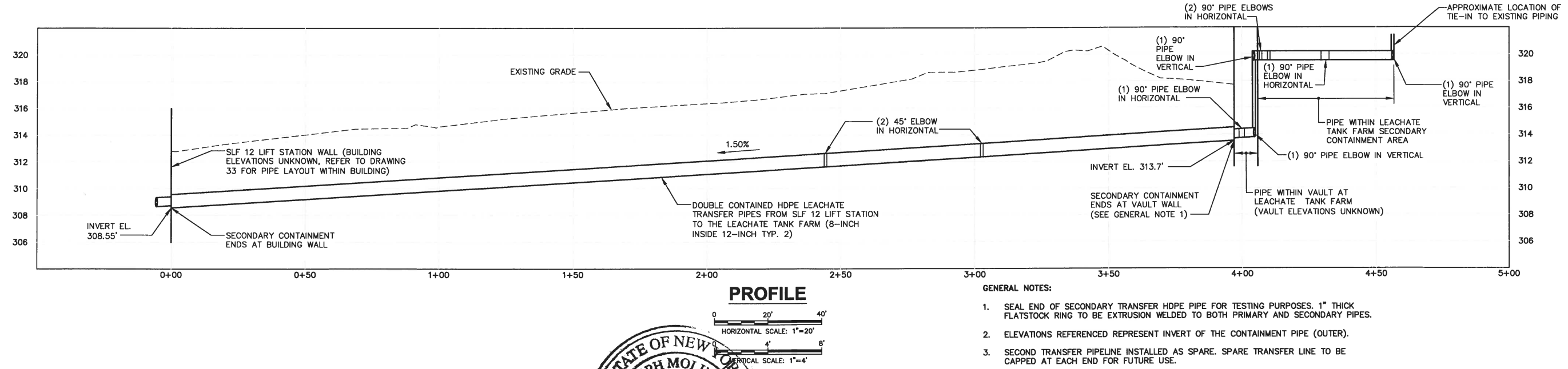
NOT TO SCALE						Professional Engineer's Name JOSEPH MOLINA Professional Engineer's No. 072644						CWM CHEMICAL SERVICES, LLC • MODEL CITY, NEW YORK RESIDUALS MANAGEMENT UNIT 2 PERMIT DRAWING		ARCADIS Project No. B0023725.2009.00006					
								State NY		Date Signed 2/21/13		Project Mgr. WAR		Date AUGUST 2009		ARCADIS of New York, Inc. 6723 Towpath Road P.O. Box 66 Syracuse, New York TEL. 315.446.9120		33	
THIS BAR REPRESENTS ONE INCH ON THE ORIGINAL DRAWING:		USE TO VERIFY FIGURE REPRODUCTION SCALE		ADDED CLASS 1 DIVISION 2 LOCATION		NWF By		BMS Ckd		Designed by BMS/PTO		Drawn by LAF		Checked by BMS		GENERAL			
				Revisions						THIS DRAWING IS THE PROPERTY OF THE ARCADIS ENTITY IDENTIFIED IN THE TITLE BLOCK AND MAY NOT BE REUSED OR ALTERED IN WHOLE OR IN PART WITHOUT THE EXPRESS WRITTEN PERMISSION OF SAME.									



TANK T-150 TRANSFER LINE TRENCH DETAIL

NOT TO SCALE

1

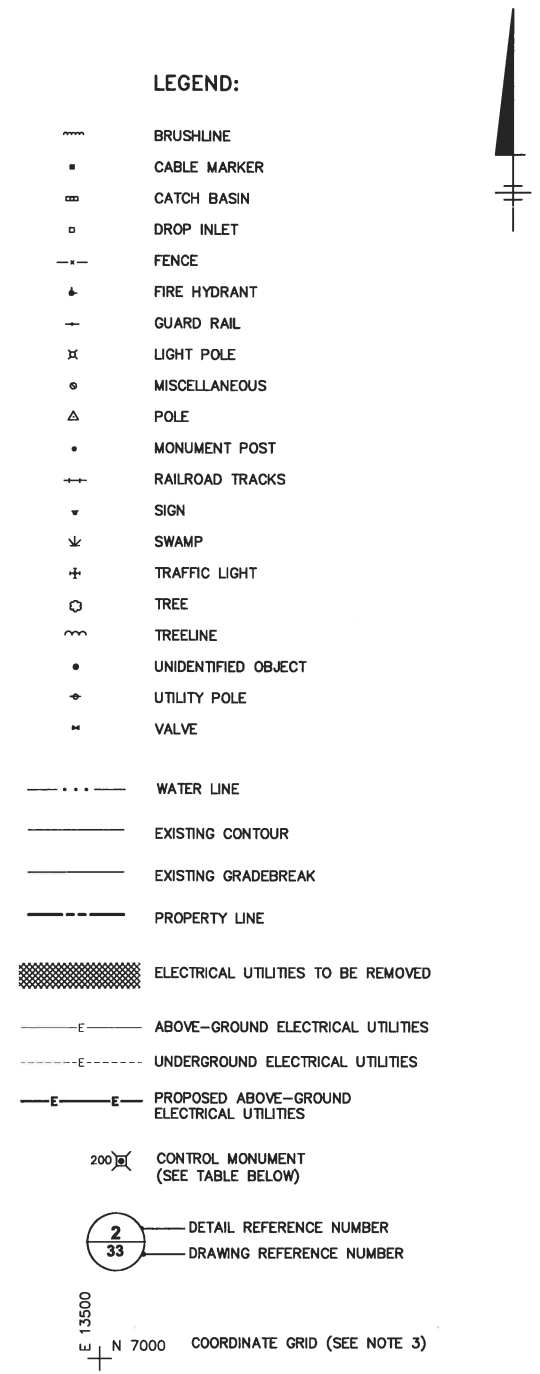


CITY: SYRACUSE DIV/GROUP: ENVCAD DB: K. DAVIS L. FORAKER K. DAVIS LD: PIC: W. POPHAM PM: W. RANKIN TM: B. STONE LTR: ONE-OFF-REF*
G:\ENVCAD\SYRACUSE\ACT\B0023725\2011\00003\DWG\RMU_2023725\634.dwg LAYOUT: 34. SAVED: 2/18/2013 3:44 PM ACADVER: 18.1S (LMS TECH) PAGES: 18 PAGES: 18 PAGES: 18 PAGES: 18
PROJECTNAME: 1
IMAGES: 1
XREFS: 1
23725X02
23725X01
23725X00

SCALE(S) AS INDICATED		Professional Engineer's Name JOSEPH MOLINA Professional Engineer's No. 072644		State NY		Date Signed 2/27/13	Project Name WAR	CWM CHEMICAL SERVICES, LLC • MODEL CITY, NEW YORK RESIDUALS MANAGEMENT UNIT 2 PERMIT DRAWING		ARCADIS Project No. B0023725.2009.00006 Date JANUARY 2012 ARCADIS of New York, Inc. 6723 Towpath Road P.O. Box 66 Syracuse, New York TEL. 315.446.9120		34
THIS BAR REPRESENTS ONE INCH ON THE ORIGINAL DRAWING.		1/2013 No. Date Revisions		Designed by NWF		Drawn by SJK		Checked by BMS		GENERAL		

THIS DRAWING IS THE PROPERTY OF THE ARCADIS ENTITY IDENTIFIED IN THE TITLE BLOCK AND MAY NOT BE REUSED OR ALTERED IN WHOLE OR IN PART WITHOUT THE EXPRESS WRITTEN PERMISSION OF SAME.

ARCADIS OF NEW YORK, INC.



- NOTES:**
1. REFER TO DRAWING NO. 2 FOR ADDITIONAL BASEMAP INFORMATION.
 2. ELECTRICAL UTILITIES SHOWN ARE APPROXIMATE AND ARE BASED ON SITE OBSERVATIONS MADE IN 2003 BY BLASLAND, BOUCK & LEE, INC. (NOW KNOWN AS ARCADIS) AND INPUT FROM CWM. POINT OF CONNECTION BETWEEN EXISTING AND PROPOSED UTILITIES ARE APPROXIMATE.
 3. REFER TO DRAWINGS IN ATTACHMENT D-1 OF THE OVERALL SITE/RMU-1 PERMIT FOR FURTHER DETAIL.
 4. REFER TO DRAWINGS IN ATTACHMENT D-2 OF THE OVERALL SITE/RMU-1 PERMIT FOR FURTHER DETAIL.
 5. ALL UTILITY MODIFICATIONS MAY NOT BE NECESSARY FOR THE CONSTRUCTION OF INDIVIDUAL ELEMENTS.



