

**NEW YORK STATE
DEPARTMENT OF
ENVIRONMENTAL CONSERVATION**

**6 NYCRR PART 373
HAZARDOUS WASTE MANAGEMENT
DRAFT PERMIT MODIFICATION
FOR
CWM CHEMICAL SERVICES L.L.C
MODEL CITY FACILITY
RESIDUALS MANAGEMENT UNIT-TWO [RMU-2]
LANDFILL AND RELATED UNITS
NIAGARA COUNTY
DEC PERMIT No. 9-2934-00022/00097
EPA ID No. NYD049836679**

VOLUME 4 OF 5

NOTE: Draft modifications are identified by **highlighted** text or by notes on existing or new pages.

PERMIT – VOLUME 4 TABLE OF CONTENTS

*[NOTE: Portions of the Volume 4 Table of Contents are being modified. Text proposed for addition is indicated in **RED**, and text proposed for deletion is indicated in ~~BLACK STRIKEOUT~~.]*

Table of Contents – Volume 4 of 5

- J Application Appendix D-6 – RMU-1 Landfill Drawings;
Application Appendix D-6a – RMU-2 Landfill Drawings;
Application Appendix D-7 – RMU-1 Landfill Technical Specifications; ~~and~~
Application Appendix D-7a – RMU-2 Landfill Technical Specifications;
Application Appendix D-8 – RMU-1 Landfill Quality Assurance Manual; ~~and~~
Application Appendix D-8a – RMU-2 Landfill Quality Assurance Manual

ATTACHMENT J

**Sections Appendices D-6, D-6a, D-7,
D-7a, & D-8 & D-8a
RMU-1 and RMU-2 Drawings,
Technical Specifications &
Construction Quality Assurance
Manuals**

(The contents of Attachment J have been derived from the Permit application submitted by CWM Chemical Services, L.L.C.)

[NOTE: Portions of Attachment J are being modified. Descriptions of how these modifications are indicated are provided on the Appendices' cover pages.]

Appendix D-6a

RMU-2 Design Drawings

[NOTE: Attachment J is being modified to add the RMU-2 Design Drawings. This page and the subsequent Drawing Nos. 1 through 36 are to be added to Attachment J.]

PERMIT DRAWINGS

RESIDUALS MANAGEMENT UNIT 2

**CWM CHEMICAL SERVICES, LLC
MODEL CITY, NIAGARA COUNTY
NEW YORK**

AUGUST 2009



INDEX TO DRAWINGS

▲ 1	TITLE AND INDEX
▲ 2	RMU-2 SITE
▲ 3	EXCAVATION GRADES
▲ 4	SUBGRADE GRADES
▲ 5	TOP OF OPERATIONS LAYER GRADES
▲ 6	TOP OF WASTE GRADES
▲ 7	TOP OF VEGETATIVE COVER GRADES
▲ 8	CELL 20 INITIAL FILL PROGRESSION
9	CONCEPTUAL WASTE FILLING AND FINAL COVER SEQUENCING
▲ 10	CROSS SECTION 11,400 E
11	CROSS SECTION 9,030 N
▲ 12	TYPICAL SUMP PLANS
▲ 13	TYPICAL SUMP PROFILES
▲ 14	TYPICAL SUMP SECTIONS AND DETAILS
▲ 15	LINER SYSTEM SECTIONS AND DETAILS
▲ 16	MSE WALL SECTIONS
▲ 17	MSE WALL SECTIONS
▲ 18	MSE WALL DETAILS
▲ 19	TYPICAL INTERCELL BERM
20	FINAL COVER DETAILS
▲ 21	FINAL COVER DETAILS
▲ 22	SURFACE WATER MANAGEMENT DETAILS
▲▲ 23	SURFACE WATER MANAGEMENT DETAILS
▲ 24	SURFACE WATER MANAGEMENT DETAILS
▲▲ 25	RMU-1/RMU-2 CULVERT SYSTEM PLAN AND PROFILE
▲▲ 26	LEACHATE TRANSFER SYSTEM PLAN
▲▲ 27	LEACHATE COLLECTION AND TRANSFER SYSTEM DETAILS
▲ 28	RISER VAULT PLAN AND SECTIONS
29	REMOTE TERMINAL UNIT PANEL AND PRIMARY AND SECONDARY CONTROL PANEL LAYOUTS
30	NORTH REMOTE CONTROL BUILDING LAYOUT
31	RMU-2 RISER VAULT ELECTRICAL DIAGRAM AND DETAILS
32	RMU-2 RISER VAULT INSTRUMENTATION DIAGRAM
▲▲ 33	SLF 12 LIFT STATION MODIFICATION
▲ 34	TANK T-150 TRANSFER PIPELINES
▲▲ 35	SITE ELECTRICAL FEED RELOCATION PLAN
▲▲ 36	SITE WATER SUPPLY RELOCATION PLAN

▲ DRAWINGS REMOVED AND INCLUDED UNDER SEPARATE COVER

- 34 FAC POND GRADING PLANS
- 35 FAC POND SECTIONS AND DETAILS
- 36 FULL TRAILER PARKING AREA
- 37 SLF 10 HOLDING TANK BUILDING LEACHATE TRANSFER RAMP
- 38 SLF 1-11 OIL/WATER SEPARATOR BUILDING LEACHATE TRANSFER RAMP
- 40 STABILIZATION FACILITY FULL TRAILER PARKING AREA
- 41 FAC POND TRANSFER PIPELINE
- 42 FAC POND TRANSFER PIPELINE
- 43 FAC POND TRANSFER PIPELINE
- 45 FAC POND TRANSFER PIPELINE DETAILS
- 48 FAC POND RISER HOUSE MECHANICAL INSTALLATION DETAILS
- 49 FAC POND RISER HOUSE ELECTRICAL INSTALLATION DETAILS
- 50 VALVE HOUSE DETAILS
- 51 FAC POND TRANSFER PIPELINE DETAILS

CITY: SYRACUSE DIV/GROUP: ENV/CAD DB: L. FORAKER K. WOOD LD: PIC: W. POPHAM PK: W. RANKIN TM: B. STONE LVR: ON=OFF=REF
 G:\ENV\CAD\SYRACUSE\ACT\B023725\2011\1000\03\DWG\RMU_2\23725\G01.dwg LAYOUT: 1. SAVED: 2/22/2013 2:43 PM ACADVER: 18.1S (LMS TECH) PAGESETUP: M-LD2B-PDF PLOTSTYLETABLE: PLTCONT1.CTB PLOTTED: 2/25/2013 1:11 PM BY: SARTORI, KATHERINE
 XREFS: IMAGES: PROJECTNAME: 23725\G01.TIF
 23725\G00

NOT TO SCALE

THIS BAR REPRESENTS ONE INCH ON THE ORIGINAL DRAWING.

USE TO VERIFY FIGURE REPRODUCTION SCALE

▲	2/2013	REVISED AND RENUMBERED DRAWINGS	GNG	BMS
▲	1/2012	NEW DRAWINGS	NWF	BMS
▲	1/2012	REVISED DRAWINGS	NWF	BMS
No.	Date	Revisions	By	Ckd

Professional Engineer's Name
JOSEPH MOLINA
Professional Engineer's No.
072644

State NY Date Signed 2/21/13 Project No. WAR
Designed by BMS/PTO Drawn by BMS Checked by BMS



ARCADIS
ARCADIS OF NEW YORK, INC.

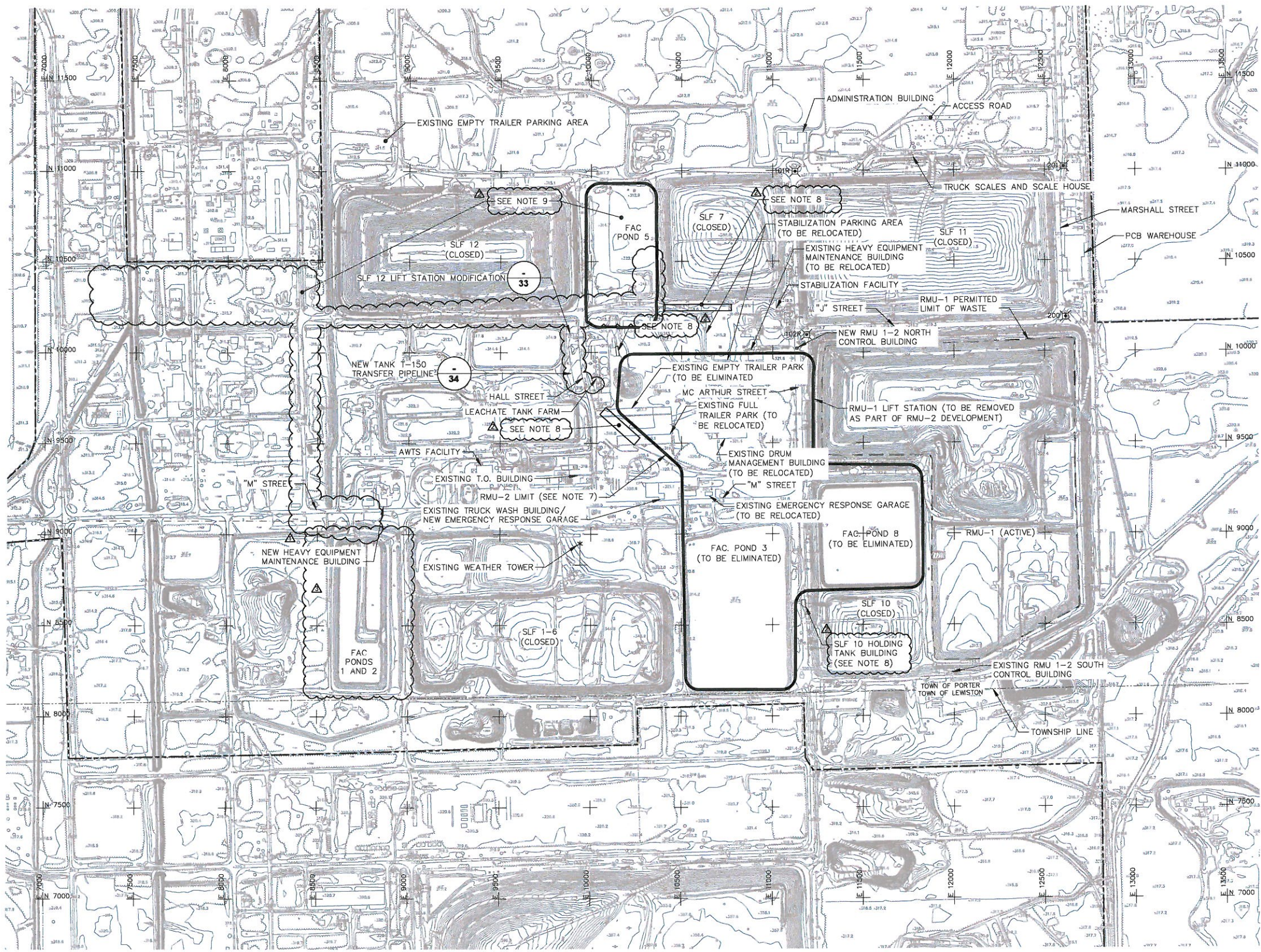
CWM CHEMICAL SERVICES, LLC • MODEL CITY, NEW YORK
RESIDUALS MANAGEMENT UNIT 2 PERMIT DRAWING

TITLE AND INDEX

GENERAL

ARCADIS Project No. B0023725.2009.00006
Date AUGUST 2009
ARCADIS of New York, Inc.
6723 Towpath Road
P.O. Box 66
Syracuse, New York
TEL. 315.446.9120

CITY: SYRACUSE, NY DIV/GRP: ENVCAD DB: K. DAVIS PIC: W. POPHAM PM: W. RANKIN TM: B. STONE LVR: ON*OFF=REF-
 G:\ENVCAD\SYRACUSE\ACT\B0023725\2013\00003\DWG\CONTRACT\RMU_2\372502.dwg LAYOUT: 2 SAVED: 11/1/2013 1:40 PM ACADVER: 18.1 S (LMS TECH) PAGES: 18 PLOT: 11/1/2013 1:40 PM BY: DAVIS, KATH
 XREFS: 23725X02
 23725X01
 23725X00
 PROJECT NAME: RMU-2 SITE



- LEGEND:**
- BRUSHLINE
 - CABLE MARKER
 - CATCH BASIN
 - DROP INLET
 - FENCE
 - ▲ FIRE HYDRANT
 - GUARD RAIL
 - × LIGHT POLE
 - MISCELLANEOUS POLE
 - ▲ MONUMENT
 - POST
 - RAILROAD TRACKS
 - * SIGN
 - × SWAMP
 - + TRAFFIC LIGHT
 - TREE
 - ~ TREELINE
 - UNIDENTIFIED OBJECT
 - + UTILITY POLE
 - VALVE
 - WATER LINE
 - EXISTING CONTOUR
 - EXISTING GRADEBREAK
 - PROPERTY LINE

200' CONTROL MONUMENT (SEE TABLE BELOW)

2 — DETAIL REFERENCE NUMBER
 33 — DRAWING REFERENCE NUMBER

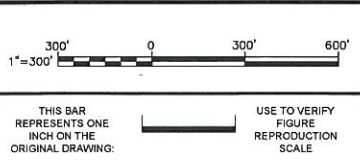
E 13500
 N 7000 COORDINATE GRID (SEE NOTE 3)

MONUMENTS	ELEVATION	CWM PLANT GRID		RMU-1 GRID		NY STATE PLANE COORDINATES (NAD-27)		NGVD-29 ELEVATION
		NORTHING	EASTING	NORTHING	EASTING	NORTHING	EASTING	
102R	319.72	100+94.55	111+87.56	100+94.65	111+87.56	1,175,430.46	396,380.12	319.86
200	318.33	101+89.56	126+13.77	101+89.56	26+13.77	1,175,488.28	397,808.18	318.27
101R	316.01	109+94.28	111+23.09	---	---	1,176,331.436	396,339.034	315.92
201	316.62	110+17.82	126+3.49	---	---	---	---	---

CONTROL MONUMENTS NOTE:

1. RMU-1 EASTING GRID COORDINATES ARE SIMPLIFIED PLANT GRID COORDINATES. SUBTRACTING 10,000 FROM THE CWM PLANT GRID EASTING COORDINATE WILL CONVERT THE CWM PLANT GRID TO THE RMU-1 GRID. NOTE THAT NO CONVERSION IS REQUIRED FOR NORTHING COORDINATES.

- NOTES:**
1. TOPOGRAPHIC BASE MAP CONSISTS OF COMBINATION OF DATA COMPILED BY PHOTOGRAMMETRIC METHODS FROM AERIAL PHOTOGRAPHY DATED 5/31/01 BY AIR SURVEY CORP. (PROJECT NO.71010503). AND AN AUGUST 2008 SURVEY BY ENSOL, INC.
 2. VERTICAL DATUM BASED ON NGS MEAN SEA LEVEL.
 3. GRID COORDINATES SHOWN ARE CWM PLANT GRID.
 4. CONTOUR INTERVAL 2 FT.
 5. DASHED CONTOURS INDICATE THAT GROUND IS PARTIALLY OBSCURED BY VEGETATION OR SHADOWS. THESE AREAS MAY NOT MEET STANDARD ACCURACY AND REQUIRE FIELD VERIFICATION.
 6. PROPERTY LINE IS APPROXIMATE. EASEMENTS AND RIGHT-OF-WAYS NOT SHOWN.
 7. RMU-2 LIMIT REPRESENTS TOE OF PERIMETER MSE WALL.
 8. REFER TO DRAWINGS IN ATTACHMENT D-1 OF THE OVERALL SITE/RMU-1 PERMIT FOR FURTHER DETAIL.
 9. REFER TO DRAWINGS IN ATTACHMENT D-2 OF THE OVERALL SITE/RMU-1 PERMIT FOR FURTHER DETAIL.



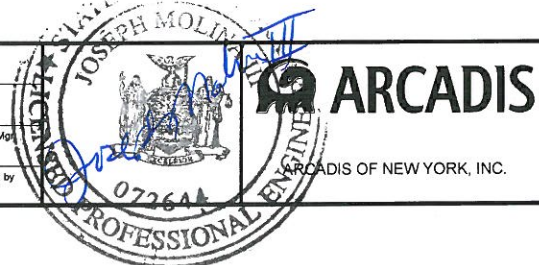
No.	Date	Revisions	By	Ckd
1	11/2013	REMOVED FAC POND 1/2 RECONSTRUCTION	GNG	BMS
2	2/2013	REVISED CALLOUTS AND NOTES	GNG	BMS
3	1/2012	REDESIGNED FAC POND TRANSFER PIPELINE	NWF	BMS

THIS DRAWING IS THE PROPERTY OF THE ARCADIS ENTITY IDENTIFIED IN THE TITLE BLOCK AND MAY NOT BE REUSED OR ALTERED IN WHOLE OR IN PART WITHOUT THE EXPRESS WRITTEN PERMISSION OF SAME.

Professional Engineer's Name
JOSEPH MOLINA
 Professional Engineer's No.
 072644

State: NY Date Signed: 11/5/13 Project No: WAR
 Designed by: BMS/PTO Drawn by: SJK Checked by: BMS

ARCADIS OF NEW YORK, INC.



CWM CHEMICAL SERVICES, LLC • MODEL CITY, NEW YORK
 RESIDUALS MANAGEMENT UNIT 2 PERMIT DRAWING

RMU-2 SITE

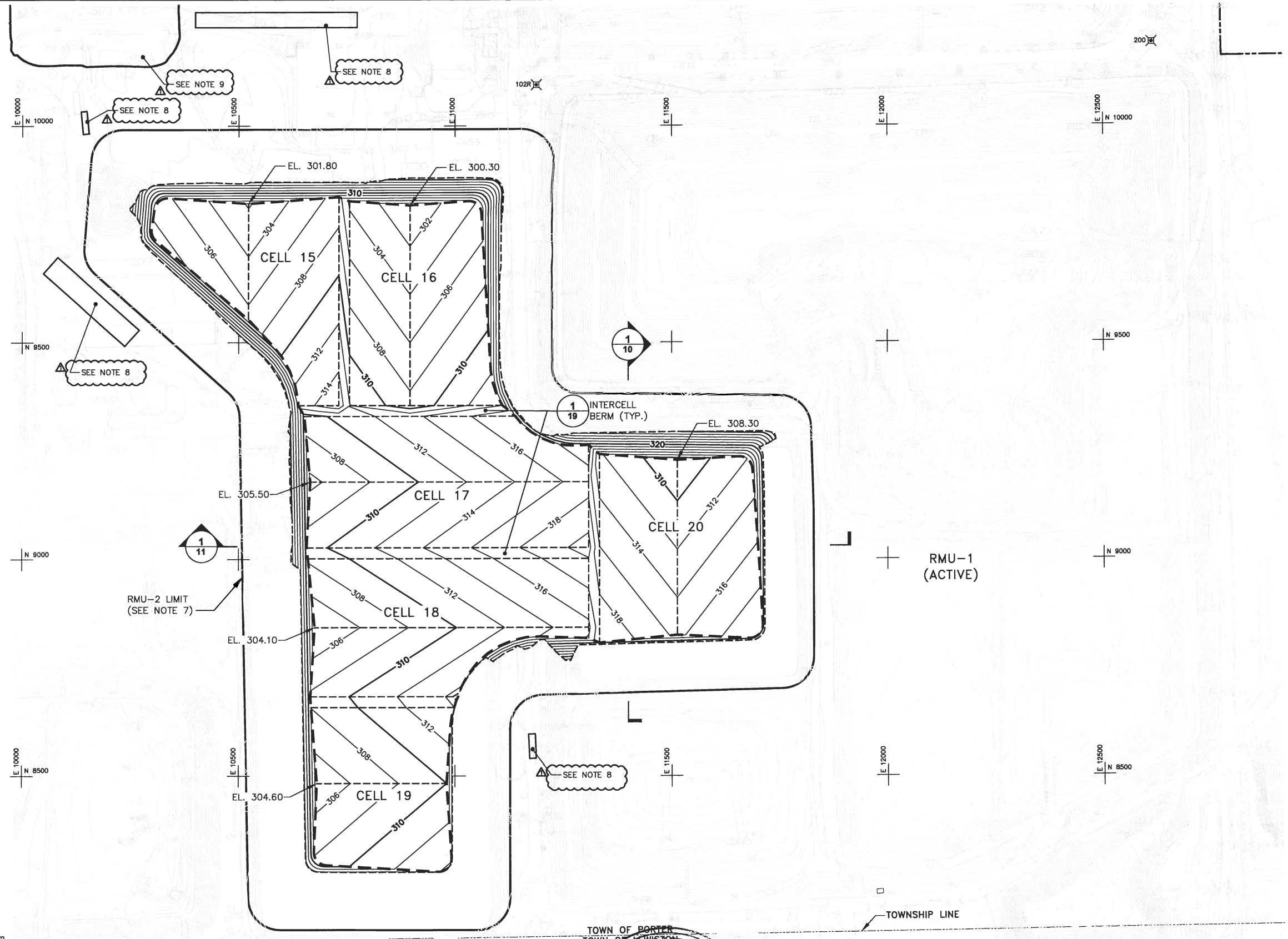
GENERAL

ARCADIS Project No.
 B0023725.2009.00006

Date
 AUGUST 2009

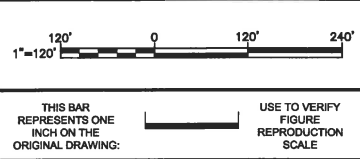
ARCADIS of New York, Inc.
 6723 Towpath Road
 P.O. Box 66
 Syracuse, New York
 TEL: 315.446.9120

CITY: SYRACUSE DIV/GROUP: ENVCAD DB: K. DAVIS L. FORAKER K. DAVIS LD: PIC: W. POPHAM PM: W. RANKIN TM: B. STONE LYN: ONE-OFF-REF
 G:\ENVCAD\SYRACUSE\ENVCAD\PROJECTS\2011000003\DWG\RMU_2\23725003.dwg LAYOUT: 3 SAVER: 2/15/2013 12:55 PM ACADVER: 18.15 (LMS TECH) PAGES: 18 PLOTTED: 2/25/2013 1:12 PM BY: BARTORI, KATHERINE
 PROJECTNAME: ---
 XREFS: IMAGES: ---
 23725002
 23725001
 23725000
 23725003



- LEGEND:**
- APPROXIMATE PROPERTY LINE
 - 310— PROPOSED INDEX ELEVATION CONTOUR
 - 308— PROPOSED INTERMEDIATE ELEVATION CONTOUR
 - PROPOSED GRADE BREAK
 - PROPOSED LOW PERMEABILITY CUT-OFF WALL
 - 200' PERMANENT CONTROL MONUMENT
 - EXISTING GROUNDWATER MONITORING WELLS
 - COORDINATE GRID
 - 4 15 DETAIL REFERENCE NUMBER
 - 1 10 SECTION REFERENCE

- NOTES:**
1. REFER TO DRAWING NO. 2 FOR ADDITIONAL BASE MAP INFORMATION.
 2. PROPOSED GRADES SHOWN ARE APPROXIMATE LIMITS OF EXCAVATION. TOPSOIL, GENERAL FILL AND CLAY WITHIN THE EXCAVATION AREA WILL BE STRIPPED AND STOCKPILED IN AREAS DESIGNATED BY THE OWNER.
 3. SURFACE DRAINAGE SHALL BE DIRECTED AROUND EXCAVATIONS. SURFACE WATER SHALL BE PUMPED TO ADJACENT DRAINAGE DITCHES AND ROUTED TO EXISTING STORMWATER RETENTION BASINS DURING CONSTRUCTION.
 4. PROPOSED SPOT ELEVATIONS AT CELL LOW POINTS REPRESENT GENERAL FLOOR SUBGRADE ELEVATION AND DO NOT REPRESENT SUMP EXCAVATING GRADES. ADDITIONAL EXCAVATION IS REQUIRED BELOW GRADES SHOWN ON THIS DRAWING AT EACH CELL SUMP LOCATION. SEE DRAWING NOS. 12, 13, AND 14 FOR ADDITIONAL INFORMATION. PRIOR TO SUMP EXCAVATION, THE POTENTIAL FOR UPLIFT SHALL BE IDENTIFIED BY THE PROTOCOL OUTLINED IN THE RMU-2 CONSTRUCTION QUALITY ASSURANCE MANUAL. APPROPRIATE CONDITIONS SHALL EXIST PRIOR TO SUMP EXCAVATIONS.
 5. RELOCATE OR ABANDON EXISTING UTILITIES PER PROJECT SPECIFICATIONS AND WITH AUTHORIZATION OF OWNER.
 6. DEMOLISH EXISTING FACILITIES (e.g., BUILDING STRUCTURES, FOUNDATIONS) WITHIN LIMITS OF LANDFILL PER PROJECT SPECIFICATIONS AND WITH AUTHORIZATION OF OWNER.
 7. RMU-2 LIMIT REPRESENTS TOE OF PERIMETER MSE WALL.
 8. REFER TO DRAWINGS IN ATTACHMENT D-1 OF THE OVERALL SITE/RMU-1 PERMIT FOR FURTHER DETAIL.
 9. REFER TO DRAWINGS IN ATTACHMENT D-2 OF THE OVERALL SITE/RMU-1 PERMIT FOR FURTHER DETAIL.



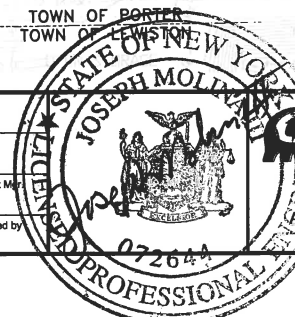
No.	Date	REVISED CALLOUTS AND NOTES	GNG	BMS
1	2/2013			

THIS DRAWING IS THE PROPERTY OF THE ARCADIS ENTITY IDENTIFIED IN THE TITLE BLOCK AND MAY NOT BE REUSED OR ALTERED IN WHOLE OR IN PART WITHOUT THE EXPRESS WRITTEN PERMISSION OF SAME.

Professional Engineer's Name
JOSEPH MOLINA
Professional Engineer's No.
072644

State: NY Date Signed: 2/21/13 Project: WAR
Designed by: BMS/PTO Drawn by: SJK Checked by: BMS

ARCADIS
ARCADIS OF NEW YORK, INC.



CWM CHEMICAL SERVICES, LLC • MODEL CITY, NEW YORK
RESIDUALS MANAGEMENT UNIT 2 PERMIT DRAWING

EXCAVATION GRADES

GENERAL

ARCADIS Project No.
80023725.2008.00006

Date
AUGUST 2009

ARCADIS of New York, Inc.
6723 Towpath Road
P.O. Box 66
Syracuse, New York
TEL: 315.446.9120