

Soil Map Legend

Code	Soil Classification	Drainage Class
1A	Udfluvents and Fluvaquents, frequently flooded, 0 to 3 % slopes	VPD
3A	Tioga loam, occasionally flooded, 0 to 3 % slopes	WD
5A	Wayland soils complex, 0 to 3 % slopes, frequently flooded	PD
6A	Wyalusing silt loam, 0 to 3 % slopes	PD
8A	Middlebury silt loam, 0 to 3 % slopes	MWD
9A	Pawling silt loam, 0 to 3 % slopes	MWD
11B	Ischua channery silt loam, 3 to 8 % slopes	MWD
11C	Ischua channery silt loam, 8 to 15 % slopes	MWD
11D	Ischua channery silt loam, 15 to 25 % slopes	MWD
11E	Ischua channery silt loam, 25 to 35 % slopes	MWD
11F	Ischua channery silt loam, 35 to 50 % slopes	MWD
12E	Franklinville channery silt loam, 25 to 35 % slopes	WD
12F	Franklinville channery silt loam, 35 to 50 % slopes	WD
14A	Hornellsville silt loam, 0 to 3 % slopes	SPD
14B	Hornellsville silt loam, 3 to 8 % slopes	SPD
14C	Hornellsville silt loam, 8 to 15 % slopes	SPD
14D	Hornellsville silt loam, 15 to 25 % slopes	SPD
14E	Hornellsville silt loam, 25 to 35 % slopes	SPD
15A	Willdin channery silt loam, 0 to 3 % slopes	MWD
15B	Willdin channery silt loam, 3 to 8 % slopes	MWD
15C	Willdin channery silt loam, 8 to 15 % slopes	MWD
15D	Willdin channery silt loam, 15 to 25 % slopes	MWD
16A	Almond silt loam, 0 to 3 % slopes	SPD
16B	Almond silt loam, 3 to 8 % slopes	SPD
16C	Almond silt loam, 8 to 15 % slopes	SPD
17B	Salamanca silt loam, 3 to 8 % slopes	MWD
17C	Salamanca silt loam, 8 to 15 % slopes	MWD
17D	Salamanca silt loam, 15 to 25 % slopes	MWD
17E	Salamanca silt loam, 25 to 35 % slopes	MWD
19A	Olean silt loam, 0 to 3 % slopes	MWD
22A	Allard silt loam, 0 to 3 % slopes	WD
25A	Chenango gravelly silt loam, 0 to 3 % slopes	WD
25B	Chenango gravelly silt loam, 3 to 8 % slopes	WD
25E	Chenango gravelly silt loam, 25 to 35 % slopes	WD
26A	Chenango channery silt loam, fan, 0 to 3 % slopes	WD
26B	Chenango channery silt loam, fan, 3 to 8 % slopes	WD
27A	Castile gravelly silt loam, 0 to 3 % slopes	MWD
27B	Castile gravelly silt loam, 3 to 8 % slopes	MWD
34A	Atherton silt loam, 0 to 3 % slopes	PD
35B	Rhinebeck silt loam, 3 to 8 % slopes	SPD
37A	Tonawanda silt loam, 0 to 3 % slopes	SPD
38B	Niagara silt loam, 3 to 8 % slopes	SPD
38C	Niagara silt loam, 8 to 15 % slopes	SPD

Soil Map Legend

39A	Atherton mucky silt loam, 0 to 3 % slopes	VPD
43A	Canandaigua silt loam, 0 to 3 % slopes	PD
46A	Red Hook silt loam, 0 to 3 % slopes	SPD
49A	Red Hook gravelly silt loam, 0 to 3 % slopes	SPD
50A	Canaseraga silt loam, 0 to 3 % slopes	MWD
50B	Canaseraga silt loam, 3 to 8 % slopes	MWD
50C	Canaseraga silt loam, 8 to 15 % slopes	MWD
51E	Chadakoin channery silt loam, 25 to 35 % slopes	WD
51F	Chadakoin channery silt loam, 35 to 50 % slopes	WD
52A	Valois gravelly silt loam, 0 to 3 % slopes	WD
52B	Valois gravelly silt loam, 3 to 8 % slopes	WD
52C	Valois gravelly silt loam, 8 to 15 % slopes	WD
52D	Valois gravelly silt loam, 15 to 25 % slopes	WD
52E	Valois gravelly silt loam, 25 to 35 % slopes	WD
53C	Valois-Volusia-Mardin complex, 3 to 15 % slopes MLRA 140	WD
58B	Rushford channery silt loam, 3 to 8 % slopes	MWD
58C	Rushford channery silt loam, 8 to 15 % slopes	MWD
58D	Rushford channery silt loam, 15 to 25 % slopes	MWD
58E	Rushford channery silt loam, 25 to 35 % slopes	MWD
59B	Yorkshire channery silt loam, 3 to 8 % slopes	MWD
59C	Yorkshire channery silt loam, 8 to 15 % slopes	MWD
59D	Yorkshire channery silt loam, 15 to 25 % slopes	MWD
60A	Napoli silt loam, 0 to 3 % slopes	SPD
60B	Napoli silt loam, 3 to 8 % slopes	SPD
60C	Napoli silt loam, 8 to 15 % slopes	SPD
60D	Napoli silt loam, 15 to 25 % slopes	SPD
61C	Schuyler silt loam, 8 to 15 % slopes	MWD
61D	Schuyler silt loam, 15 to 25 % slopes	MWD
61F	Schuyler silt loam, 35 to 50 % slopes	MWD
62B	Mardin channery silt loam, 3 to 8 % slopes	MWD
62C	Mardin channery silt loam, 8 to 15 % slopes	MWD
62D	Mardin channery silt loam, 15 to 25 % slopes	MWD
64C	Mardin channery silt loam, 8 to 15 % slopes, very stony	MWD
64D	Mardin channery silt loam, 15 to 25 % slopes, very stony	MWD
66B	Volusia channery silt loam, 3 to 8 % slopes, very stony	SPD
66C	Volusia channery silt loam, 8 to 15 % slopes, very stony	SPD
67A	Dalton silt loam, 0 to 3 % slopes	SPD
67B	Dalton silt loam, 3 to 8 % slopes	SPD
68A	Volusia channery silt loam, 0 to 3 % slopes	SPD
68B	Volusia channery silt loam, 3 to 8 % slopes	SPD
68C	Volusia channery silt loam, 8 to 15 % slopes	SPD
68D	Volusia channery silt loam, 15 to 25 % slopes	SPD
69A	Erie channery silt loam, 0 to 3 % slopes	SPD
69B	Erie channery silt loam, 3 to 8 % slopes	SPD

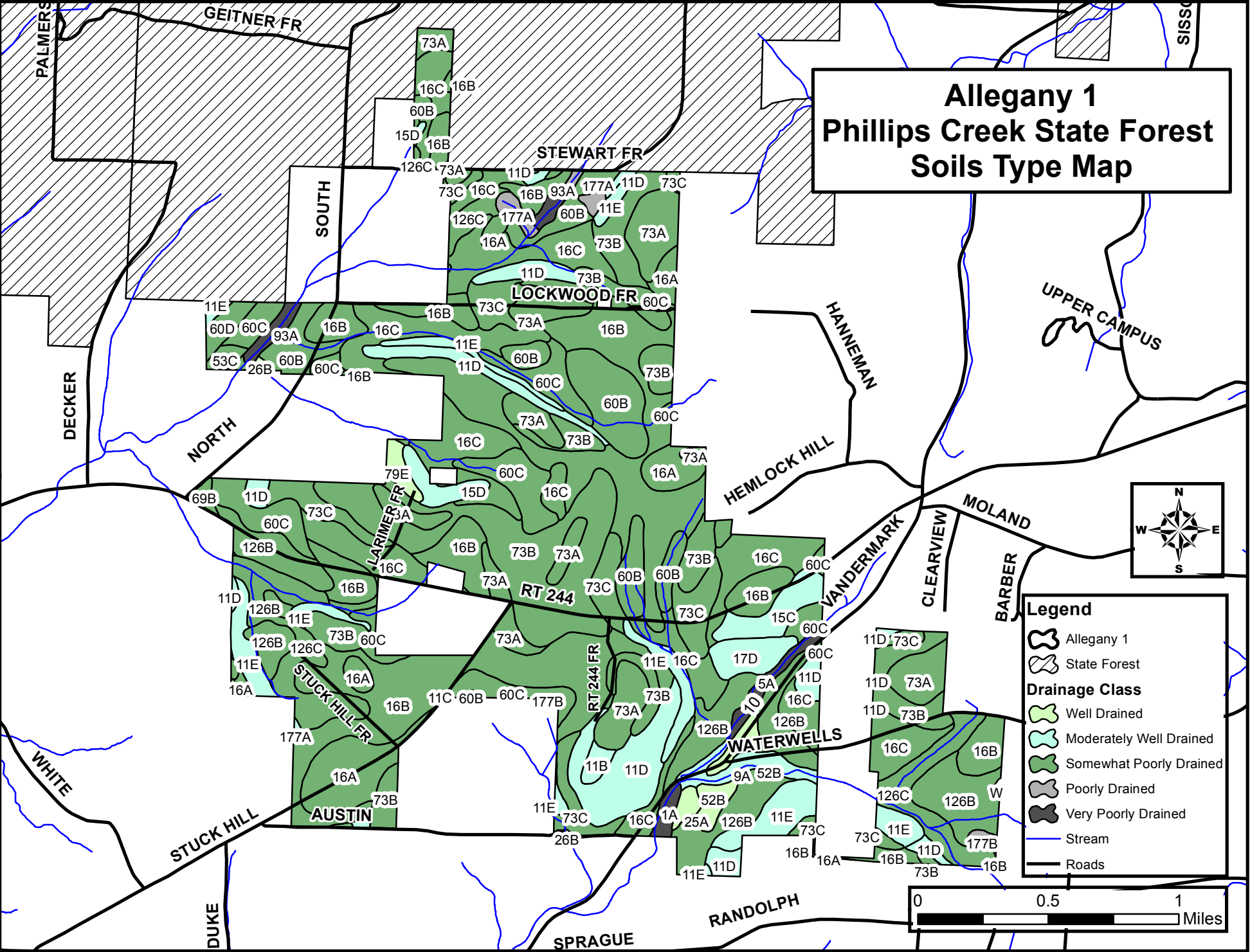
Soil Map Legend

69C	Erie channery silt loam, 8 to 15 % slopes	SPD
71B	Mongaup channery silt loam, 3 to 8 % slopes, very stony	WD
71C	Mongaup channery silt loam, 8 to 15 % slopes, very stony	WD
71D	Mongaup and Ischua channery silt loams, 15 to 25 % slopes, ext. stony	MWD
71E	Mongaup and Ischua channery silt loams, 25 to 35 % slopes, ext. stony	WD
71F	Mongaup and Ischua channery silt loams, 35 to 65 % slopes, ext. stony	WD
72B	Towerville silt loam, 3 to 8 % slopes	MWD
72C	Towerville silt loam, 8 to 15 % slopes	MWD
72D	Towerville silt loam, 15 to 25 % slopes	MWD
72E	Towerville silt loam, 25 to 35 % slopes	MWD
72F	Towerville silt loam, 35 to 50 % slopes	MWD
73A	Gretor channery silt loam, 0 to 3 % slopes	SPD
73B	Gretor channery silt loam, 3 to 8 % slopes	SPD
73C	Gretor channery silt loam, 8 to 15 % slopes	SPD
75A	Alden mucky silt loam, cool, 0 to 3 % slopes	VPD
76A	Orpark silt loam, 0 to 3 % slopes	SPD
76B	Orpark silt loam, 3 to 8 % slopes	SPD
76C	Orpark silt loam, 8 to 15 % slopes	SPD
77A	Chippewa silt loam, 0 to 3 % slopes	PD
77B	Chippewa silt loam, 3 to 8 % slopes	PD
78C	Hornell silt loam, 8 to 15 % slopes	SPD
78D	Hornell silt loam, 15 to 25 % slopes	SPD
78E	Hornell silt loam, 25 to 35 % slopes	SPD
79B	Mongaup channery silt loam, 3 to 8 % slopes	WD
79C	Mongaup channery silt loam, 8 to 15 % slopes	WD
79D	Mongaup channery silt loam, 15 to 25 % slopes	WD
79E	Mongaup channery silt loam, 25 to 35 % slopes	WD
79F	Mongaup channery silt loam, 35 to 70 % slopes	WD
80B	Fremont silt loam, 3 to 8 % slopes	SPD
80C	Fremont silt loam, 8 to 15 % slopes	SPD
80D	Fremont silt loam, 15 to 25 % slopes	SPD
81C	Varysburg gravelly loam, 8 to 15 % slopes	WD
81D	Varysburg gravelly loam, 15 to 25 % slopes	WD
81E	Varysburg gravelly loam, 25 to 35 % slopes	WD
81F	Varysburg gravelly loam, 35 to 50 % slopes	WD
91A	Natchaug muck, 0 to 2 % slopes	VPD
93A	Aquepts, Aquepts, and Saprist, inundated, 0 to 3 % slopes	VPD
111A	Middlebrook channery silt loam, 0 to 3 % slopes	MWD
111B	Middlebrook channery silt loam, 3 to 8 % slopes	MWD
111C	Middlebrook channery silt loam, 8 to 15 % slopes	MWD
117C	Willdin channery silt loam, 8 to 15 % slopes, very stony	MWD
117D	Willdin channery silt loam, 15 to 25 % slopes, very stony	MWD
118B	Ontusia channery silt loam, 3 to 8 % slopes, very stony	SPD
118C	Ontusia channery silt loam, 8 to 15 % slopes, very stony	SPD

Soil Map Legend

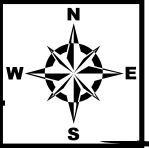
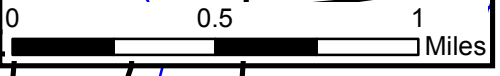
120B	Hawksnest channery silt loam, 3 to 8 % slopes	SED
124C	Lewbath channery silt loam, 8 to 15 % slopes	WD
126A	Ontusia channery silt loam, 0 to 3 % slopes	SPD
126B	Ontusia channery silt loam, 3 to 8 % slopes	SPD
126C	Ontusia channery silt loam, 8 to 15 % slopes	SPD
126D	Ontusia channery silt loam, 15 to 25 % slopes	SPD
132A	Wiscoy-Volusia complex, 0 to 3 % slopes	SPD
132B	Wiscoy-Volusia complex, 3 to 8 % slopes	SPD
132C	Wiscoy-Volusia complex, 8 to 15 % slopes	SPD
134E	Bath channery silt loam, 25 to 35 % slopes	WD
150B	Canaseraga silt loam, 3 to 8 % slopes cool phase	MWD
167A	Dalton silt loam, 0 to 3 % slopes, cool phase	SPD
167B	Dalton silt loam, 3 to 8 % slopes, cool phase	SPD
171D	Lordstown and Towerville soils, 15 to 25 % slopes, ext. stony	MWD
171F	Lordstown and Towerville soils, 35 to 60 % slopes, ext. stony	WD
177A	Norchip silt loam, 0 to 3 % slopes	PD
177B	Norchip silt loam, 3 to 8 % slopes	PD
179C	Lordstown channery silt loam, 8 to 15 % slopes	WD
179D	Lordstown channery silt loam, 15 to 25 % slopes	WD
179E	Lordstown channery silt loam, 25 to 35 % slopes	WD
179F	Lordstown channery silt loam, 35 to 60 % slopes	WD
188B	Kanona silty clay loam, 3 to 8 % slopes	SPD
188C	Kanona silty clay loam, 8 to 15 % slopes	SPD
200D	Udorthents, loamy, 0 to 25 % slopes	MWD
800A	Holderton silt loam, 0 to 3 % slopes, occasionally flooded 140	SPD
VoB	Volusia channery silt loam, 3 to 8 % slopes	SPD
VoC	Volusia channery silt loam, 8 to 15 % slopes	SPD
W	Water	

Allegany 1 Phillips Creek State Forest Soils Type Map

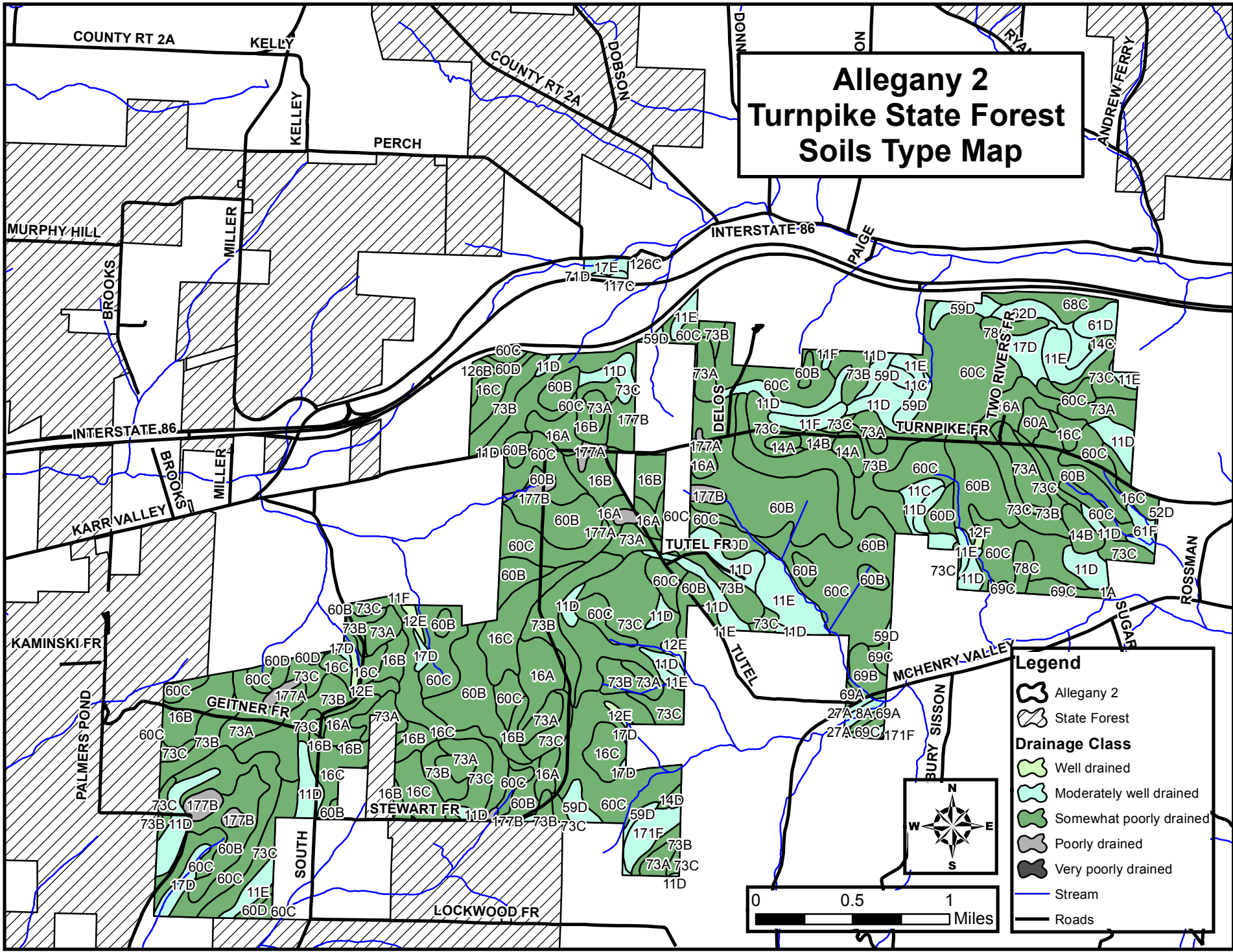


Legend

- Allegany 1
- State Forest
- Drainage Class**
 - Well Drained
 - Moderately Well Drained
 - Somewhat Poorly Drained
 - Poorly Drained
 - Very Poorly Drained
- Stream
- Roads

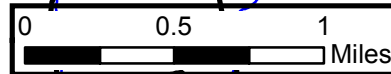
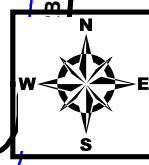


Allegany 2 Turnpike State Forest Soils Type Map

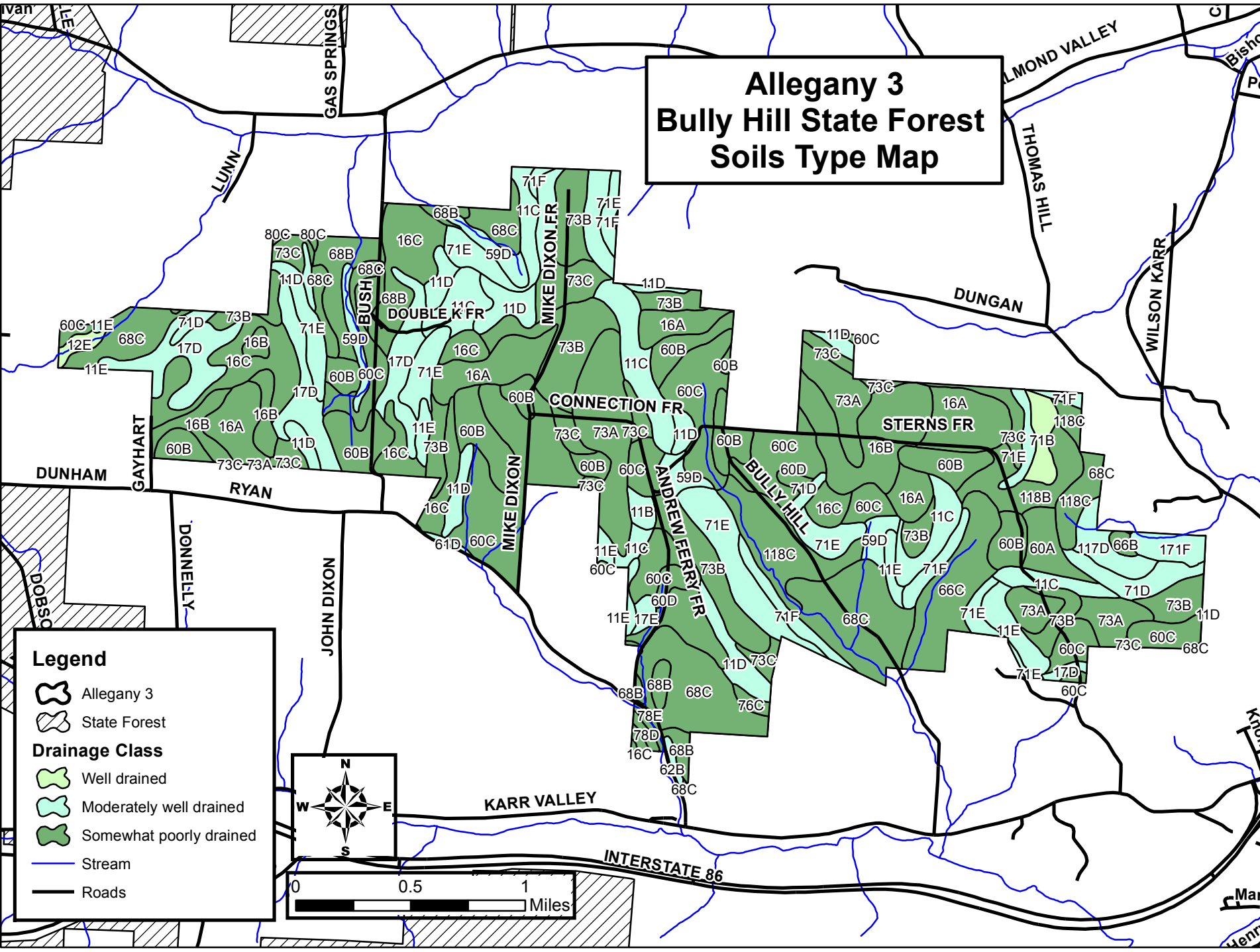


Legend

- Allegany 2
- State Forest
- Drainage Class**
- Well drained
- Moderately well drained
- Somewhat poorly drained
- Poorly drained
- Very poorly drained
- Stream
- Roads



Allegany 3 Bully Hill State Forest Soils Type Map



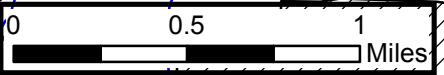
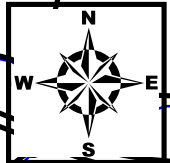
Legend

- Allegany 3
- State Forest

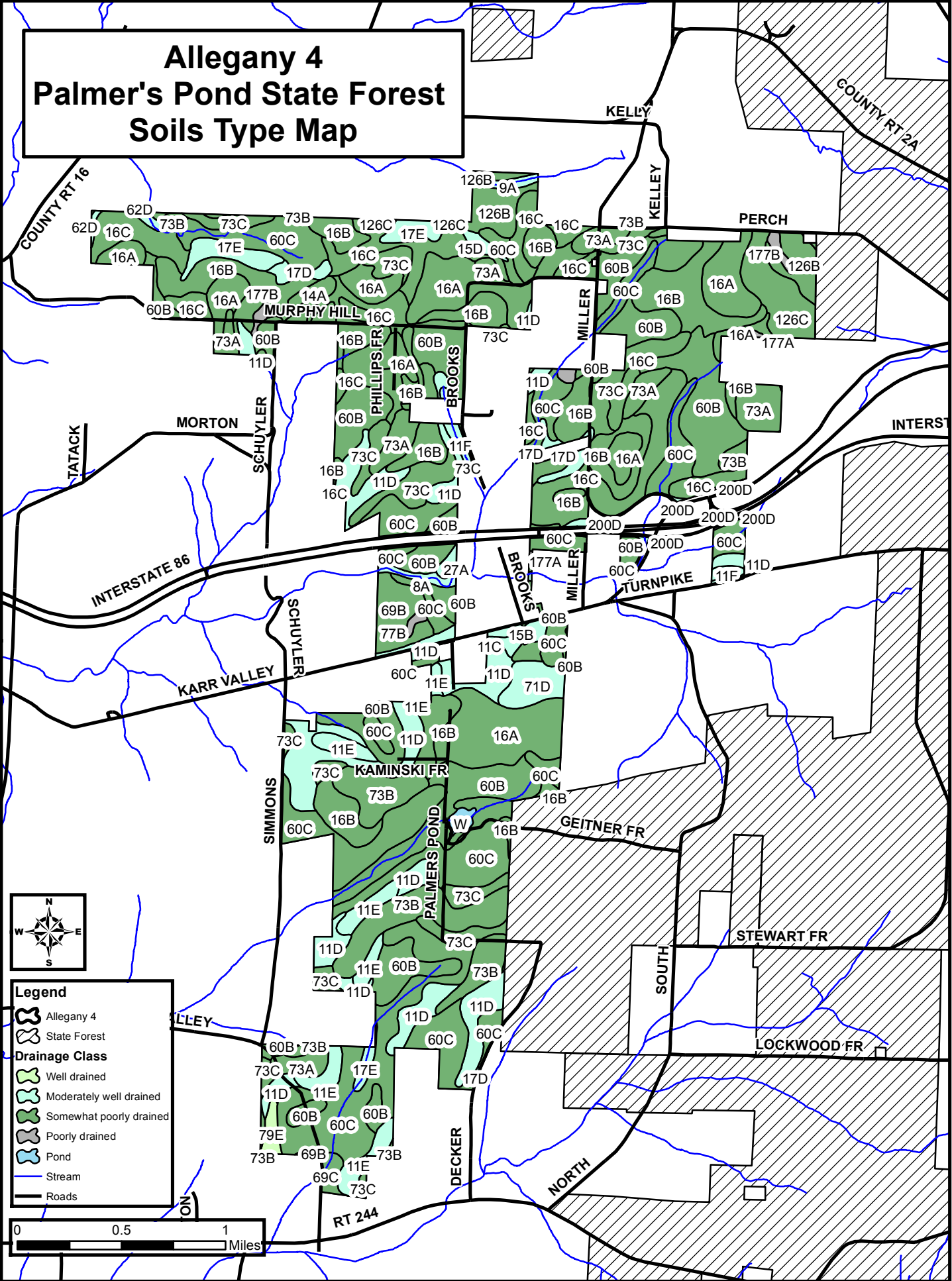
Drainage Class

- Well drained
- Moderately well drained
- Somewhat poorly drained

- Stream
- Roads

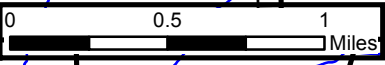


Allegany 4 Palmer's Pond State Forest Soils Type Map

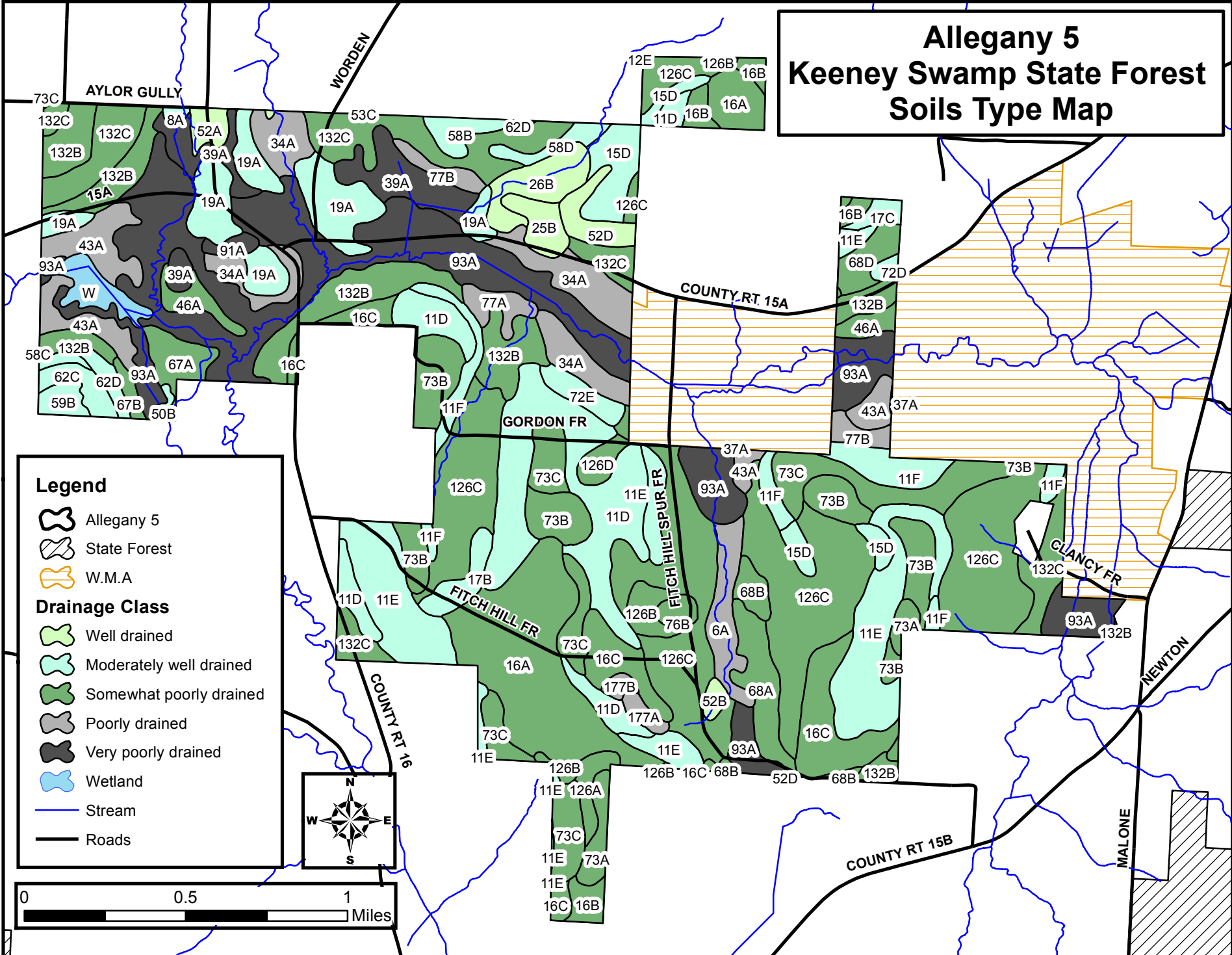


Legend

- Allegany 4
- State Forest
- Drainage Class**
- Well drained
- Moderately well drained
- Somewhat poorly drained
- Poorly drained
- Pond
- Stream
- Roads



Allegany 5 Keeney Swamp State Forest Soils Type Map

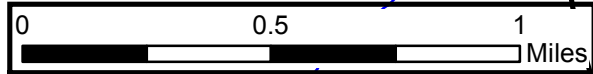
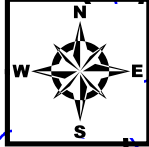


Legend

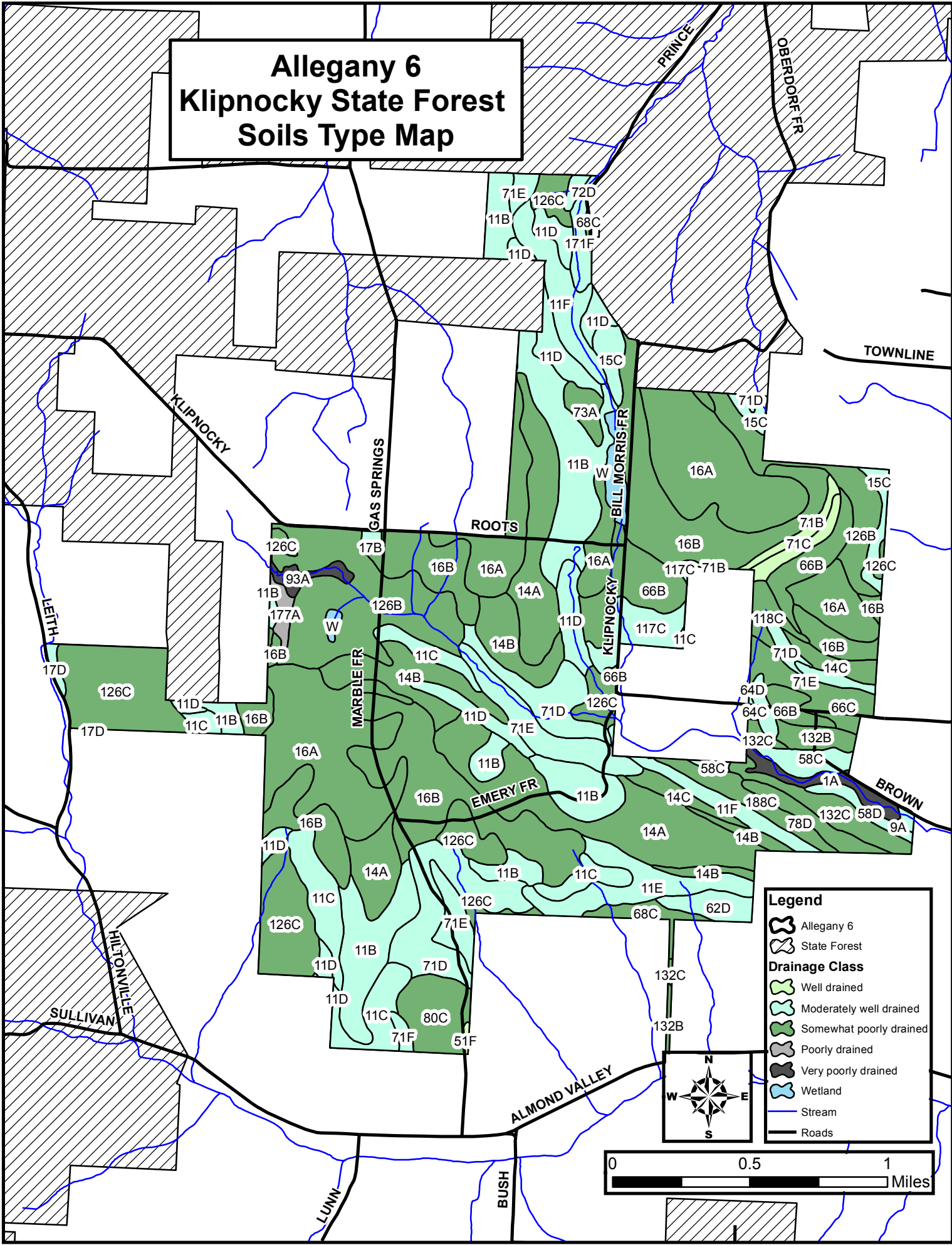
- Allegany 5
- State Forest
- W.M.A.

Drainage Class

- Well drained
- Moderately well drained
- Somewhat poorly drained
- Poorly drained
- Very poorly drained
- Wetland
- Stream
- Roads

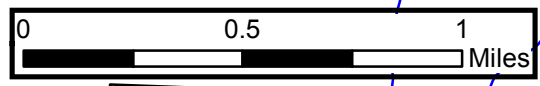
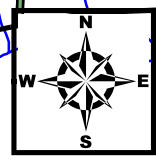


Allegany 6 Klipnocky State Forest Soils Type Map

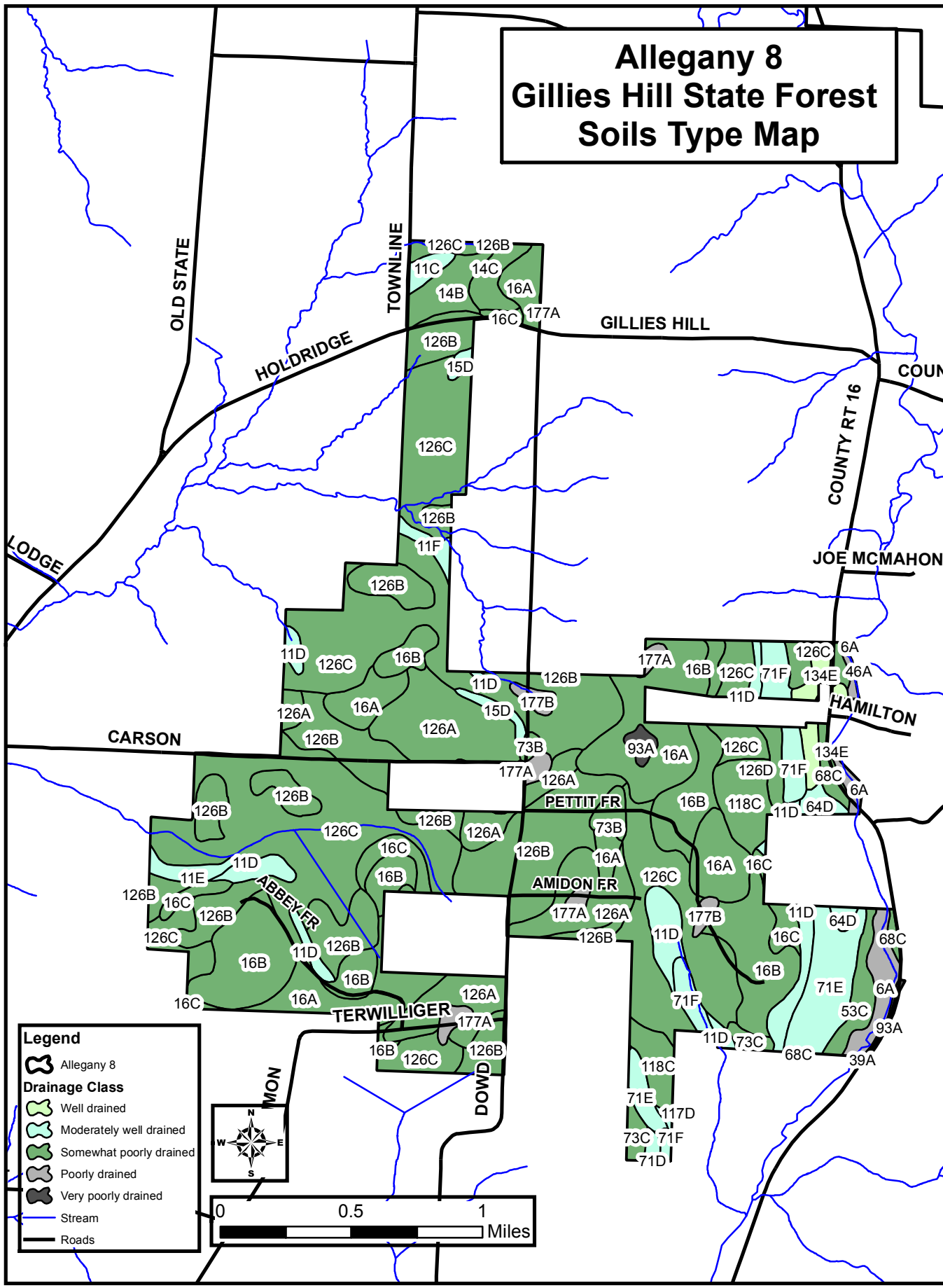


Legend

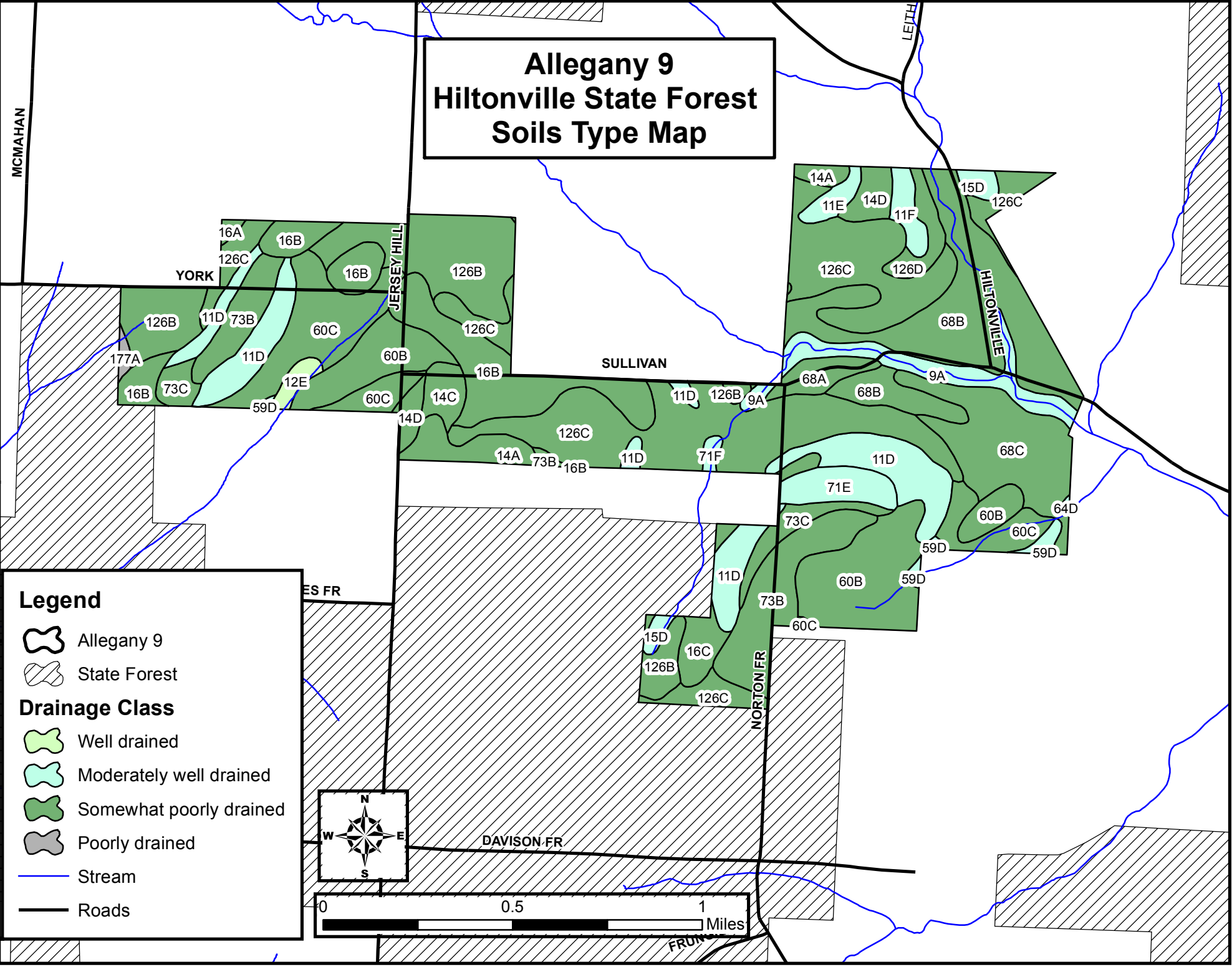
- Allegany 6
- State Forest
- Drainage Class**
- Well drained
- Moderately well drained
- Somewhat poorly drained
- Poorly drained
- Very poorly drained
- Wetland
- Stream
- Roads











Allegany 8 Gillies Hill State Forest Soils Type Map

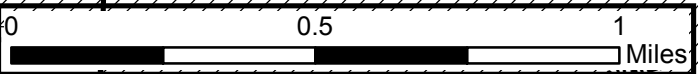


Allegany 9 Hiltonville State Forest Soils Type Map

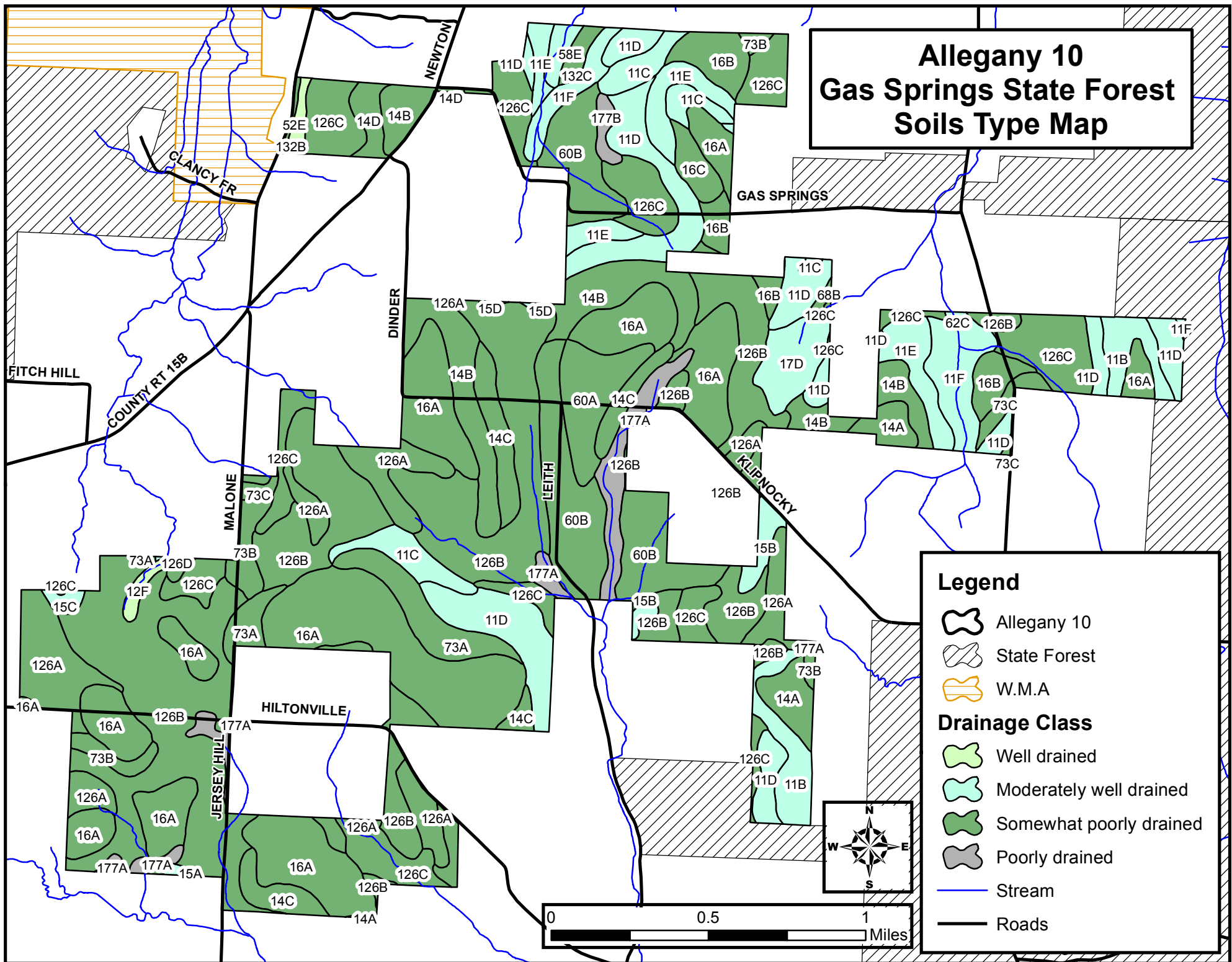


Legend

-  Allegany 9
-  State Forest
- Drainage Class**
-  Well drained
-  Moderately well drained
-  Somewhat poorly drained
-  Poorly drained
-  Stream
-  Roads



Allegheny 10 Gas Springs State Forest Soils Type Map

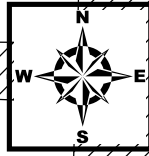
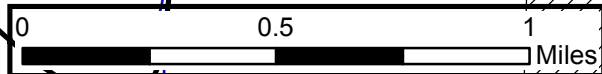


Legend

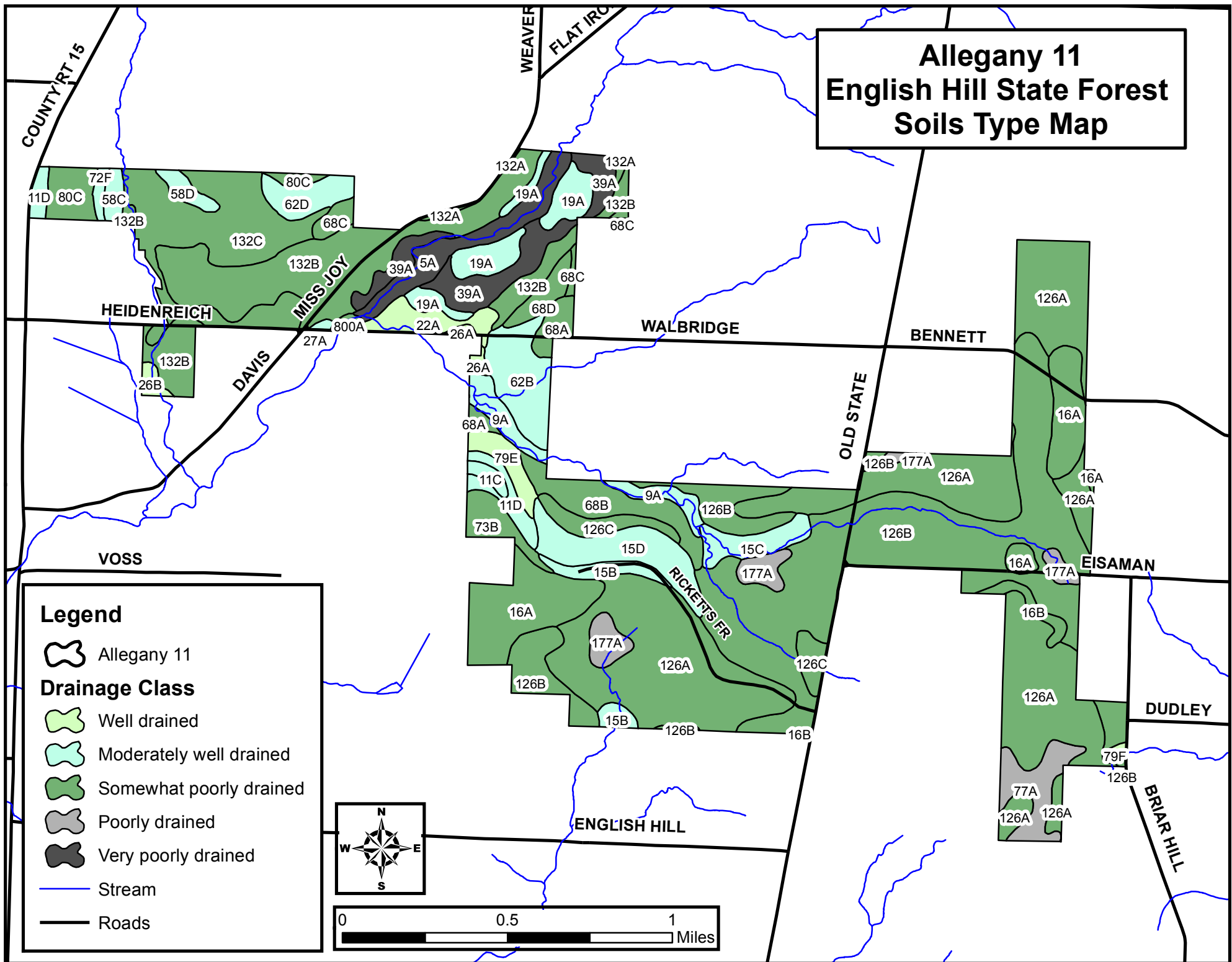
- Allegheny 10
- State Forest
- W.M.A

Drainage Class









- Well drained
- Moderately well drained
- Somewhat poorly drained
- Poorly drained
- Stream
- Roads

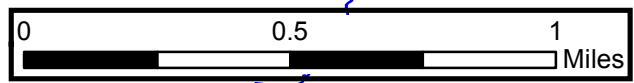
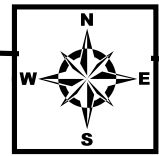


Allegheny 11 English Hill State Forest Soils Type Map

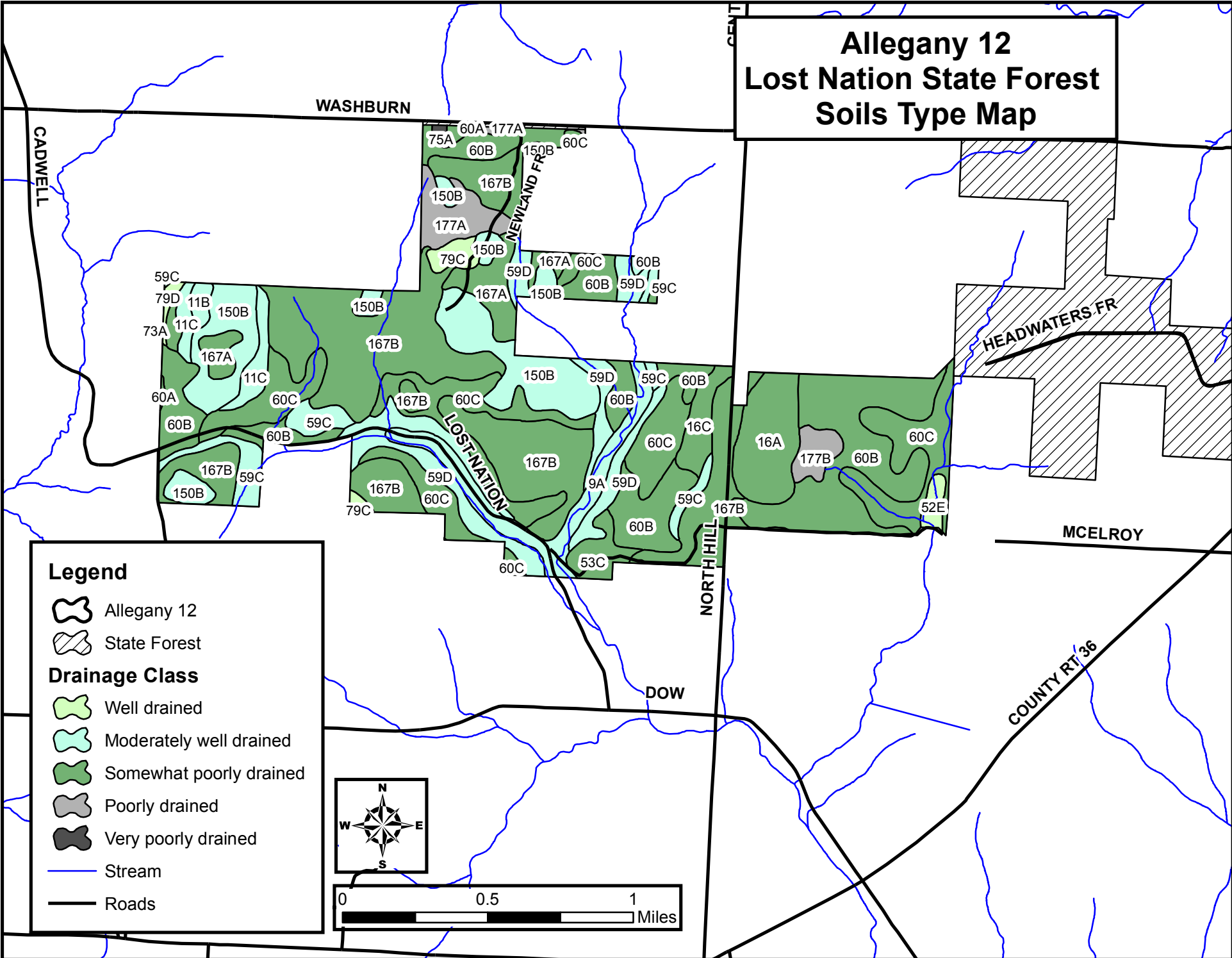


Legend










-  Allegheny 11
- Drainage Class**
-  Well drained
-  Moderately well drained
-  Somewhat poorly drained
-  Poorly drained
-  Very poorly drained
-  Stream
-  Roads

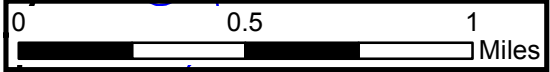
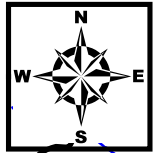


Allegany 12 Lost Nation State Forest Soils Type Map

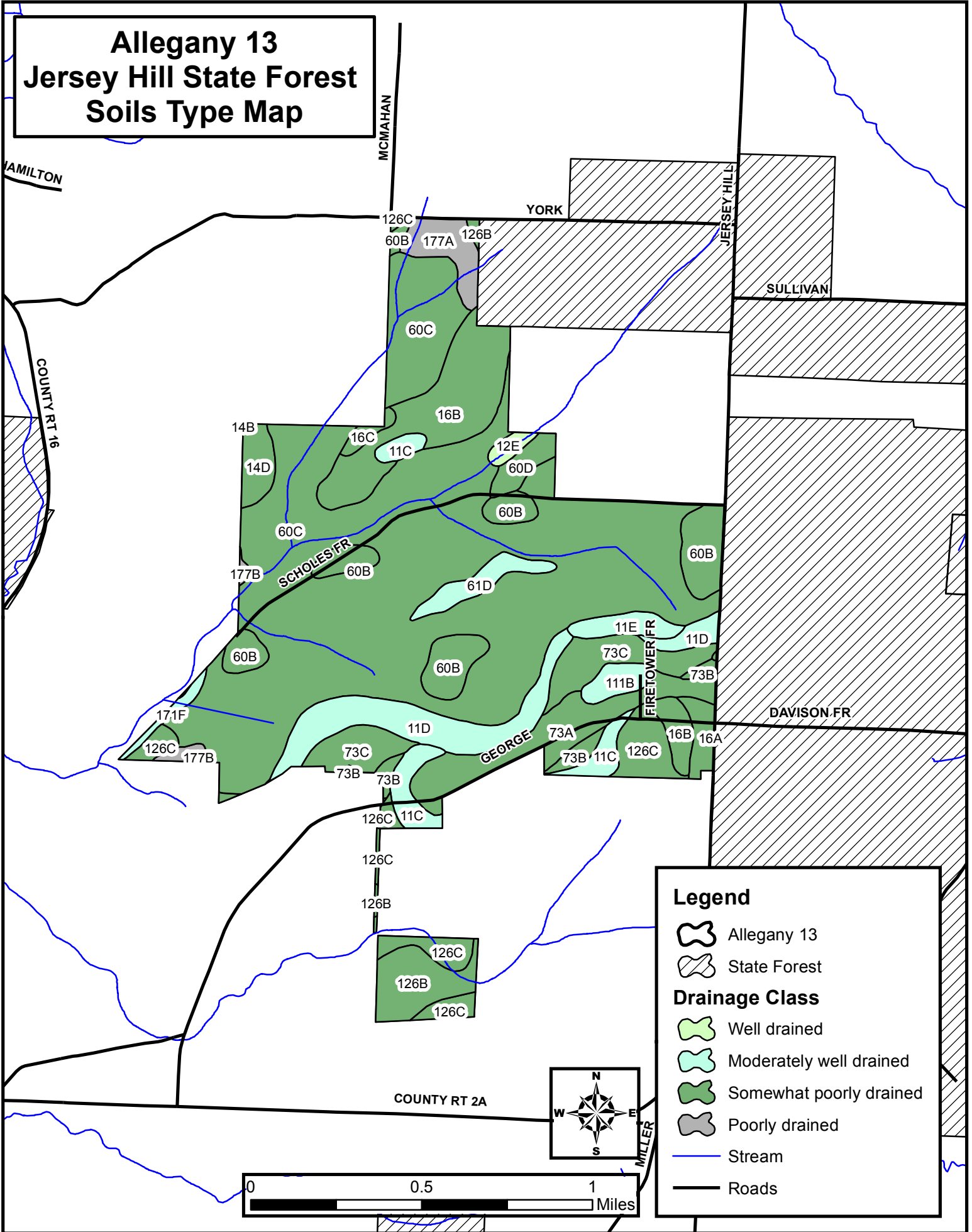


Legend

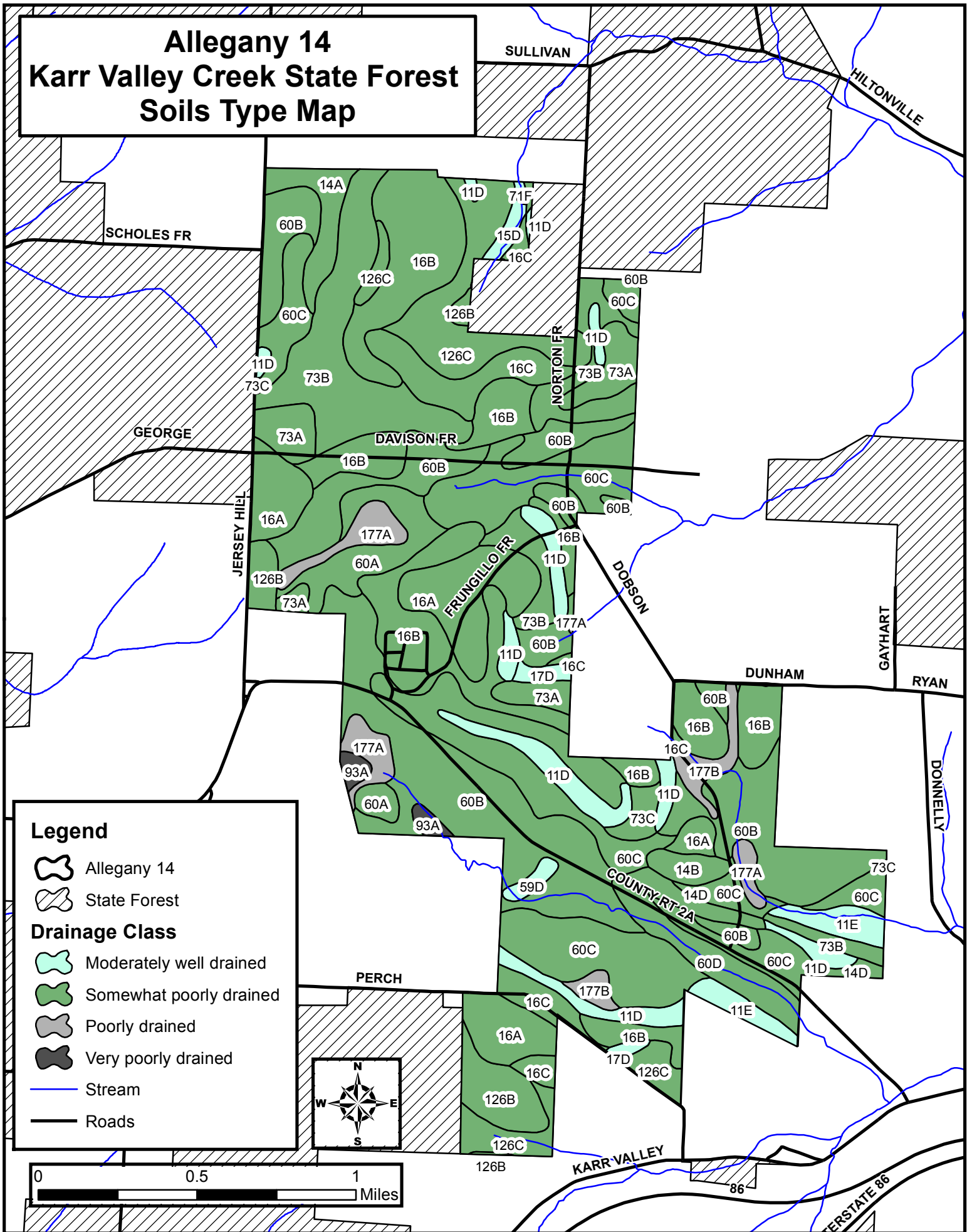
-  Allegany 12
-  State Forest
- Drainage Class**
-  Well drained
-  Moderately well drained
-  Somewhat poorly drained
-  Poorly drained
-  Very poorly drained
-  Stream
-  Roads



Allegany 13 Jersey Hill State Forest Soils Type Map



Allegany 14 Karr Valley Creek State Forest Soils Type Map

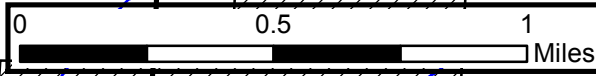
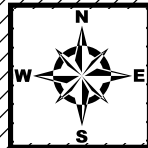


Legend

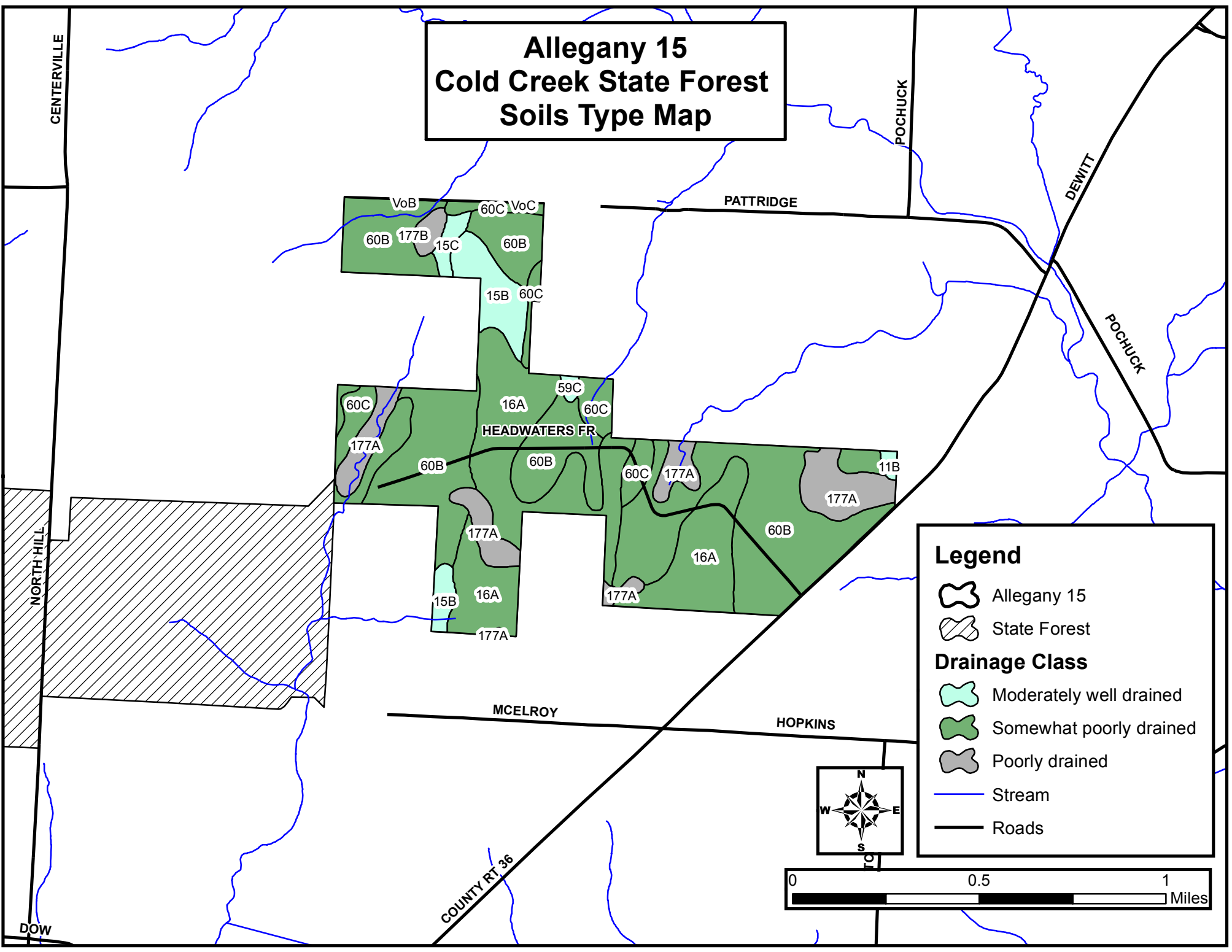
- Allegany 14
- State Forest

Drainage Class



- Moderately well drained
- Somewhat poorly drained
- Poorly drained
- Very poorly drained
- Stream
- Roads





Allegany 15 Cold Creek State Forest Soils Type Map



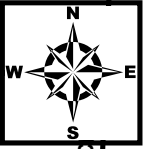
Legend

-  Allegany 15
-  State Forest

Drainage Class









-  Moderately well drained
-  Somewhat poorly drained
-  Poorly drained
-  Stream
-  Roads

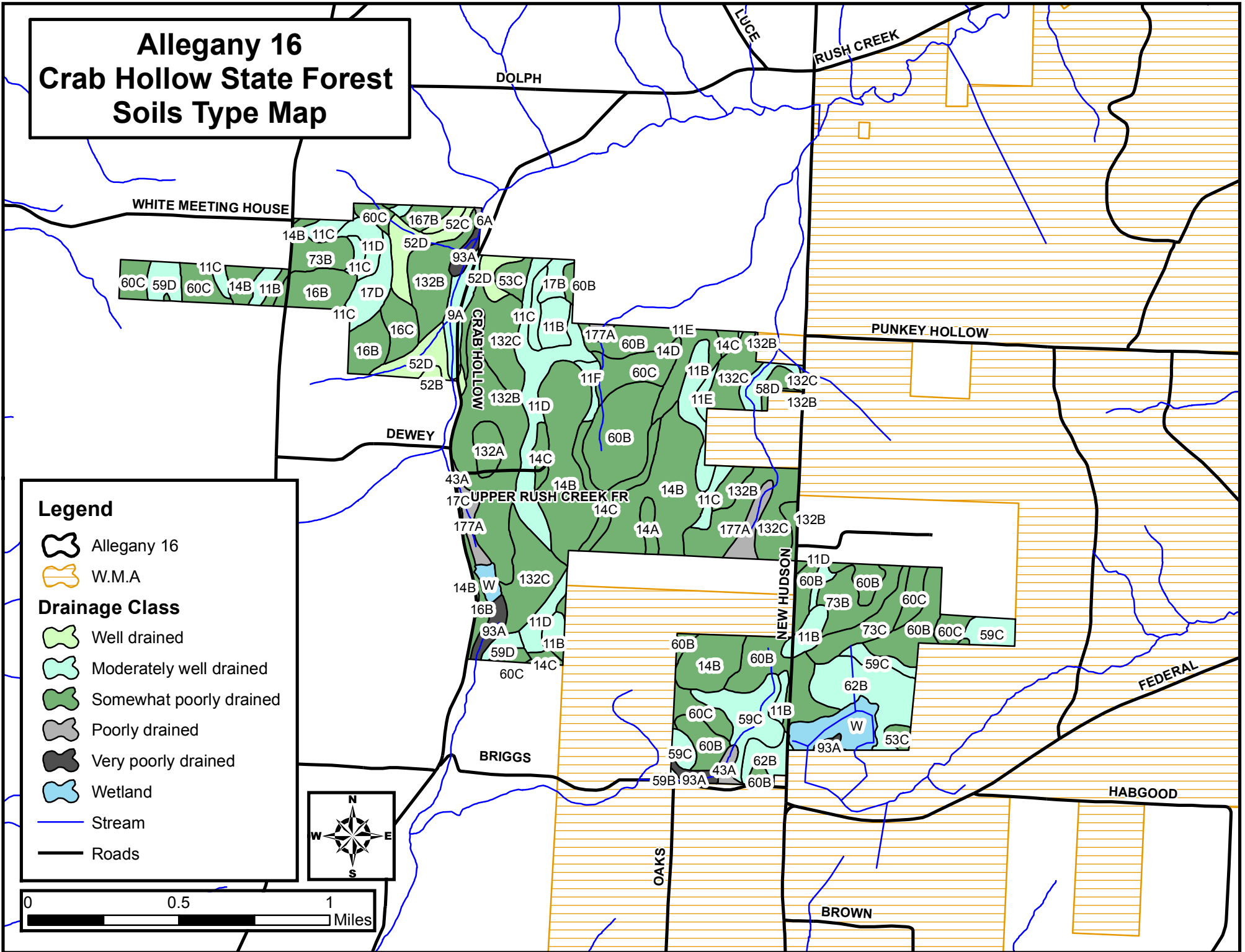
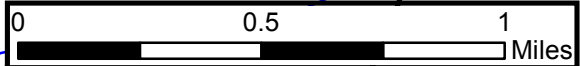
0 0.5 1 Miles



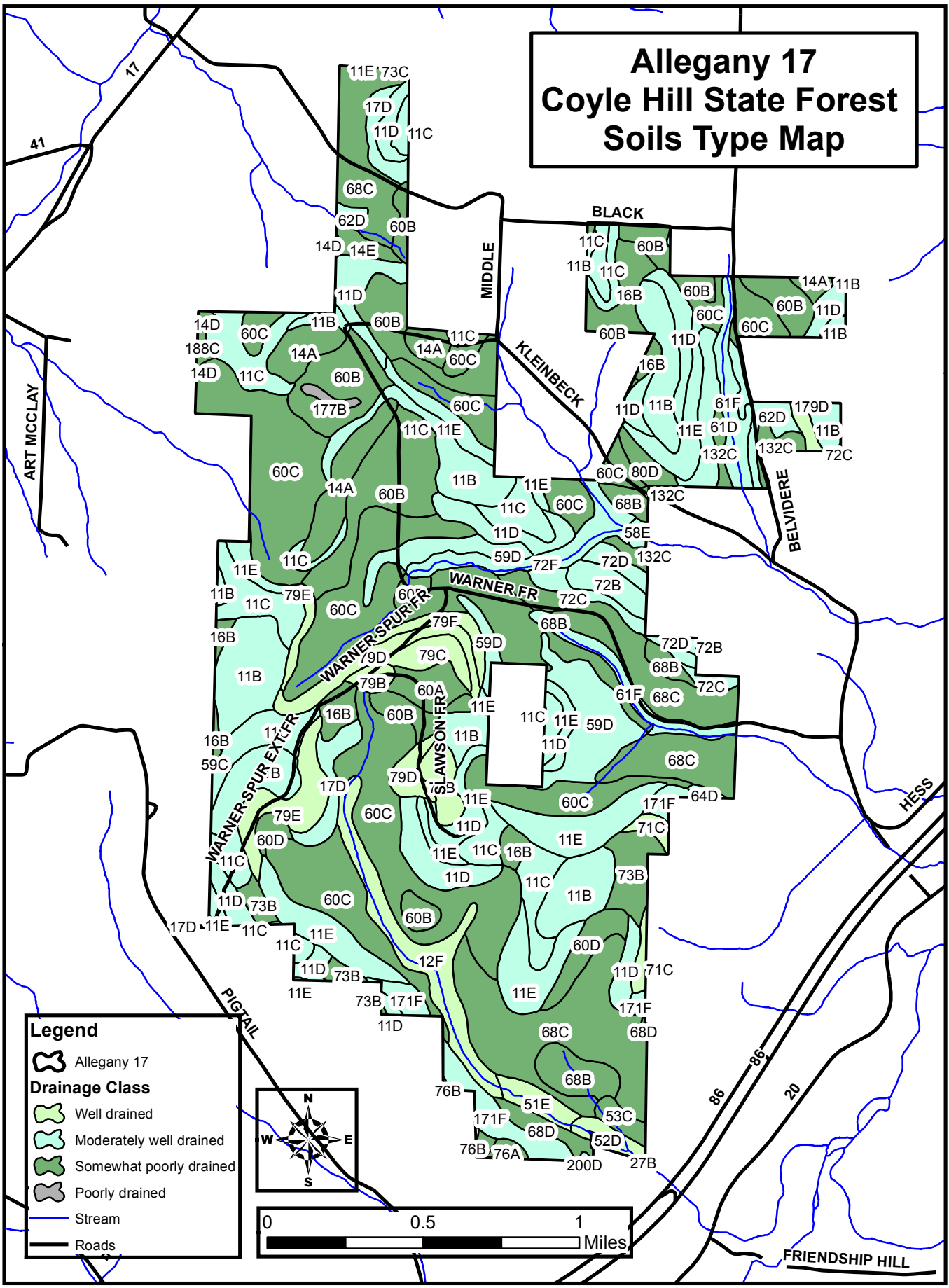
Allegany 16 Crab Hollow State Forest Soils Type Map

Legend

-  Allegany 16
-  W.M.A.
- Drainage Class**
-  Well drained
-  Moderately well drained
-  Somewhat poorly drained
-  Poorly drained
-  Very poorly drained
-  Wetland
-  Stream
-  Roads

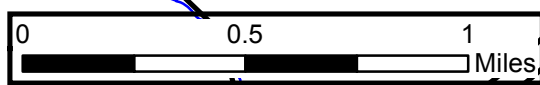
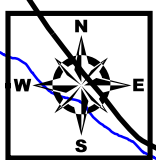


Allegany 17 Coyle Hill State Forest Soils Type Map

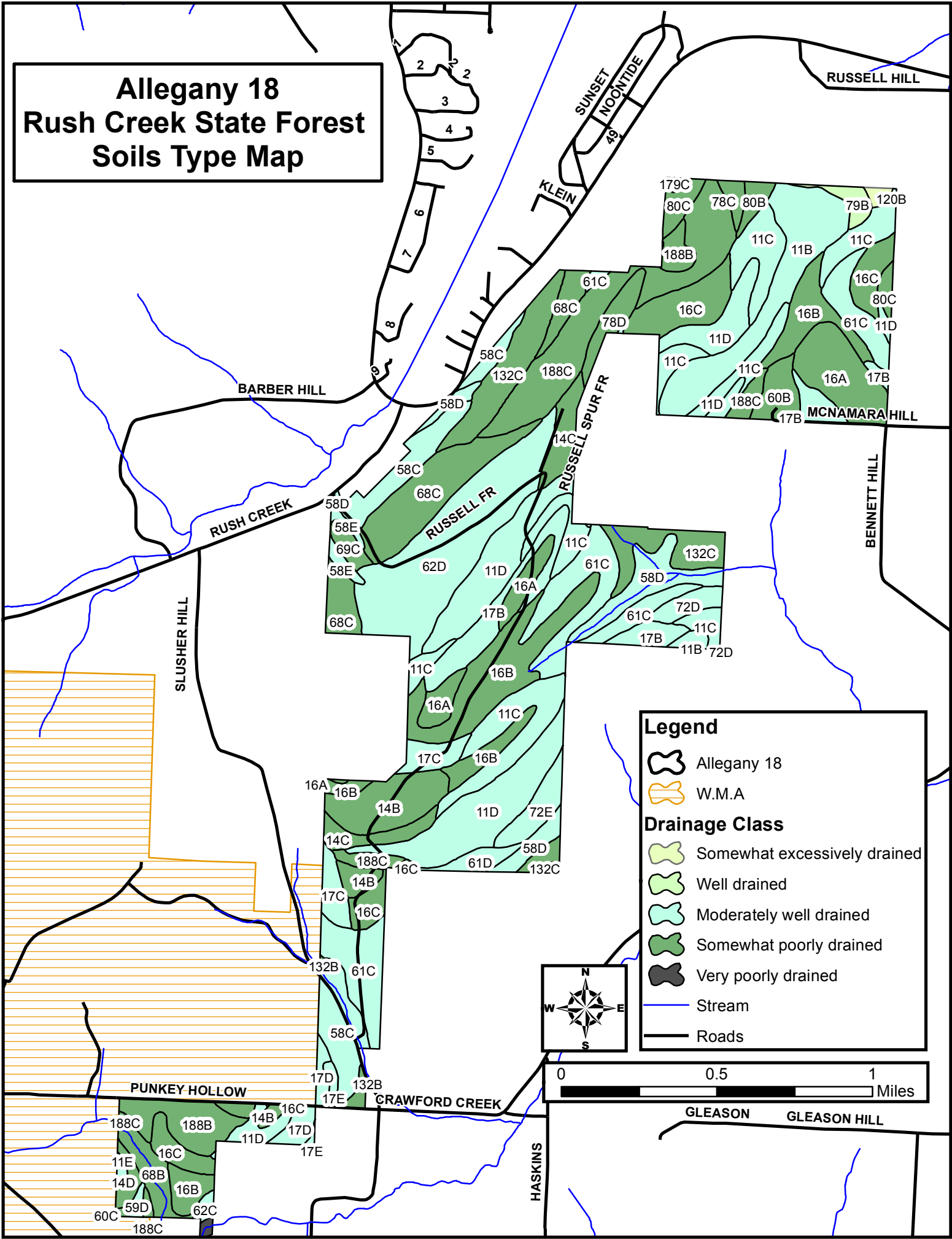


Legend

- Allegany 17
- Drainage Class**
- Well drained
- Moderately well drained
- Somewhat poorly drained
- Poorly drained
- Stream
- Roads



Allegheny 18 Rush Creek State Forest Soils Type Map

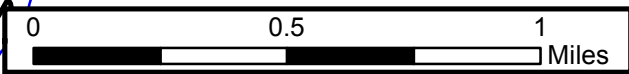
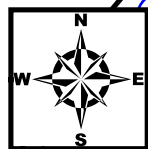


Legend

- Allegheny 18
- W.M.A.

Drainage Class

- Somewhat excessively drained
- Well drained
- Moderately well drained
- Somewhat poorly drained
- Very poorly drained
- Stream
- Roads



PUNKEY HOLLOW

CRAWFORD CREEK

GLEASON GLEASON HILL

HASKINS

188C 188B 14B 16C 11D 17D 17E
11E 16C 14D 68B 16B
60C 59D 62C 188C

16A 16B 14B 11D 72E
14C 188C 16C 61D 132C
17C 14B 16C
132B 61C
58C
17D 132B 17E

132C
58D
61C
72D
11C
17B
11B 72D

16A 16B 11C
17C 16B
11D
16A 16B
17B
11C
62D
11D
16A
17B
61C
58D
68C

179C 78C 80B 79B 120B
80C 11C 11B 11C
188B 16C 16B 61C 11D
11D 11C 11C 16A 17B
11D 188C 60B 17B
17B

2 2 2
3
4
5
6
7
8
9

SUNSET NOONTIDE
KLEIN
RUSSELL FR
RUSSELL SPUR FR

RUSSELL HILL

BARBER HILL

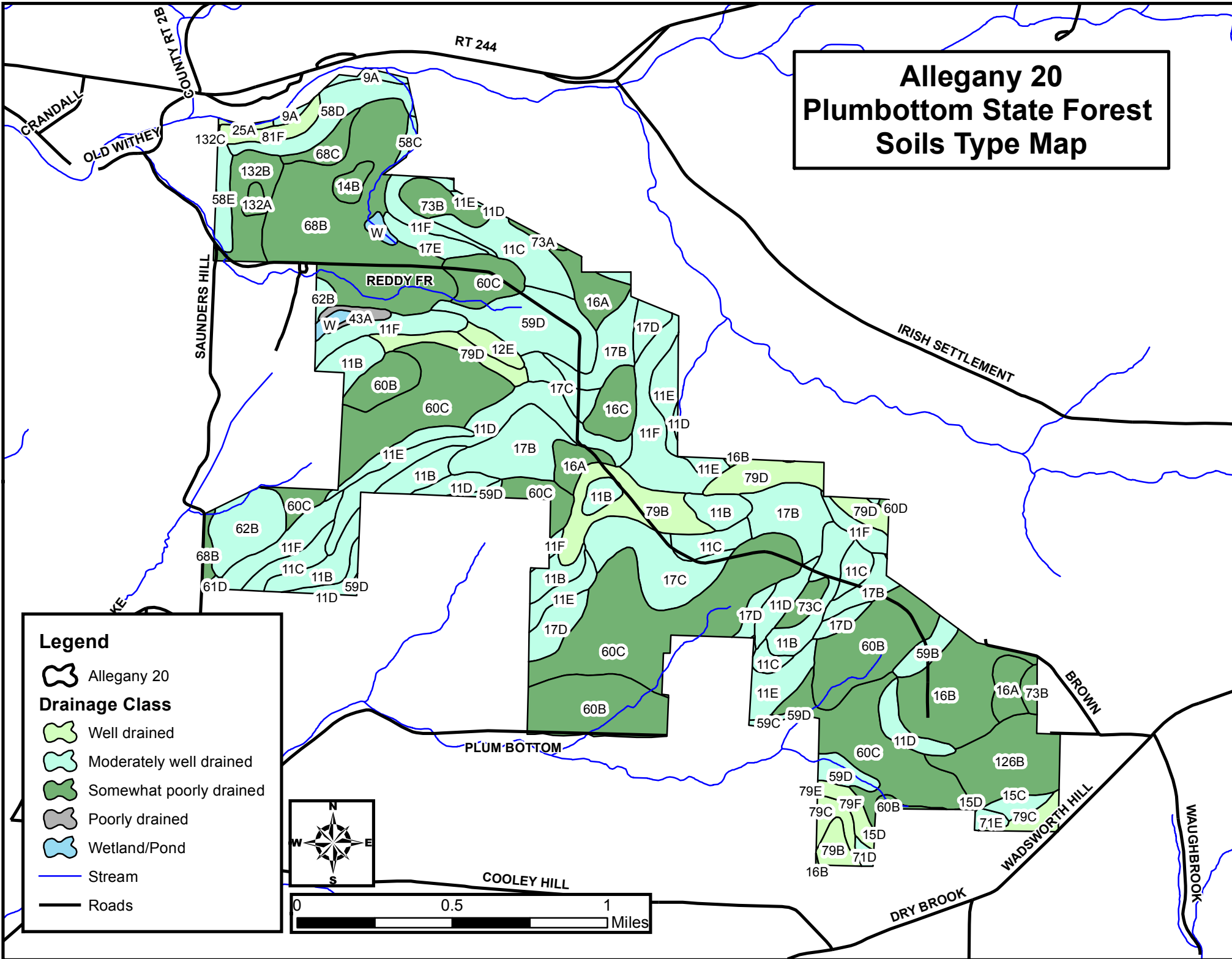
RUSH CREEK

SLUSHER HILL

MCKNAMARA HILL

BENNETT HILL

Allegany 20 Plumbottom State Forest Soils Type Map



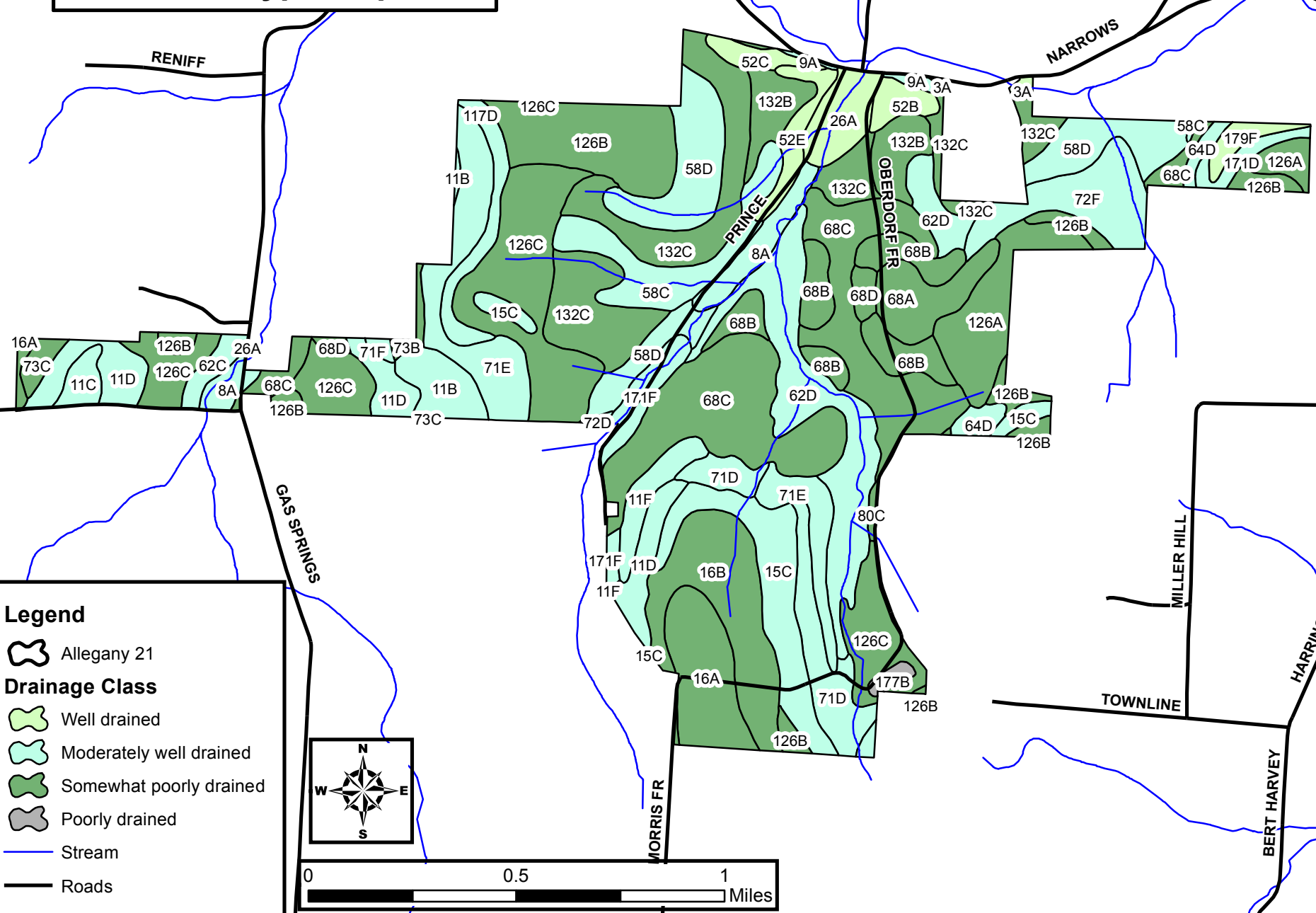
Legend

- Allegany 20
- Drainage Class**
- Well drained
- Moderately well drained
- Somewhat poorly drained
- Poorly drained
- Wetland/Pond
- Stream
- Roads

N
W —+— E
S

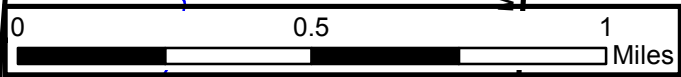
0 0.5 1
Miles

Allegheny 21 Slader Creek State Forest Soils Type Map



Legend

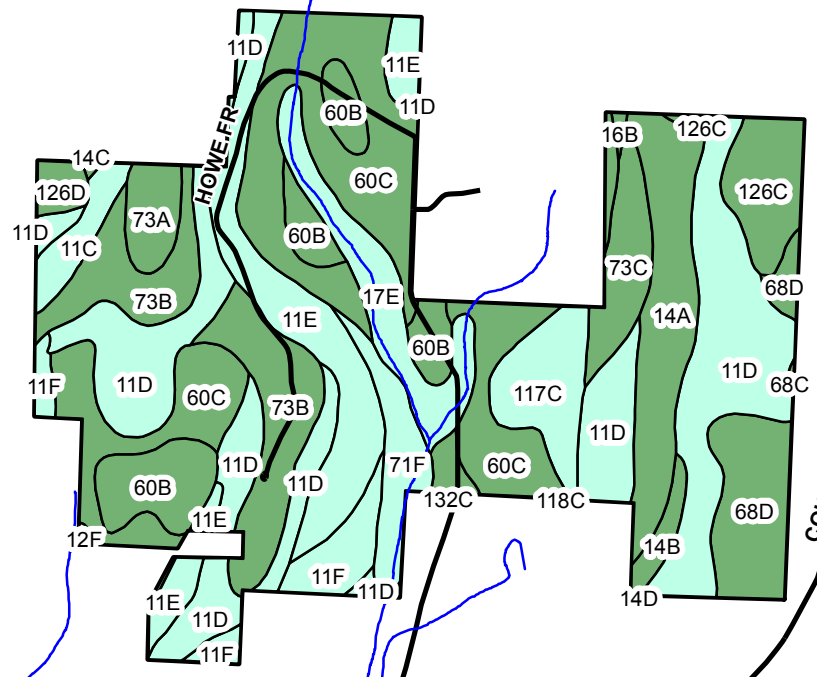
- Allegany 21
- Drainage Class**
 - Well drained
 - Moderately well drained
 - Somewhat poorly drained
 - Poorly drained
- Stream
- Roads



Allegany 22 Bald Mountain State Forest Soils Type Map

COMMON LOGGIN

BREITWESER



DOWD

COUNTY RT. 16

BARDEEN







BUEHRINGS

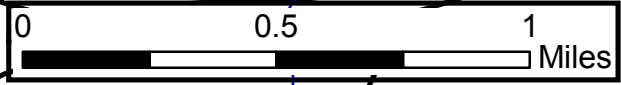
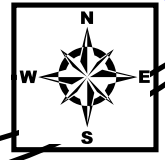
ROSE

SWIFT HILL

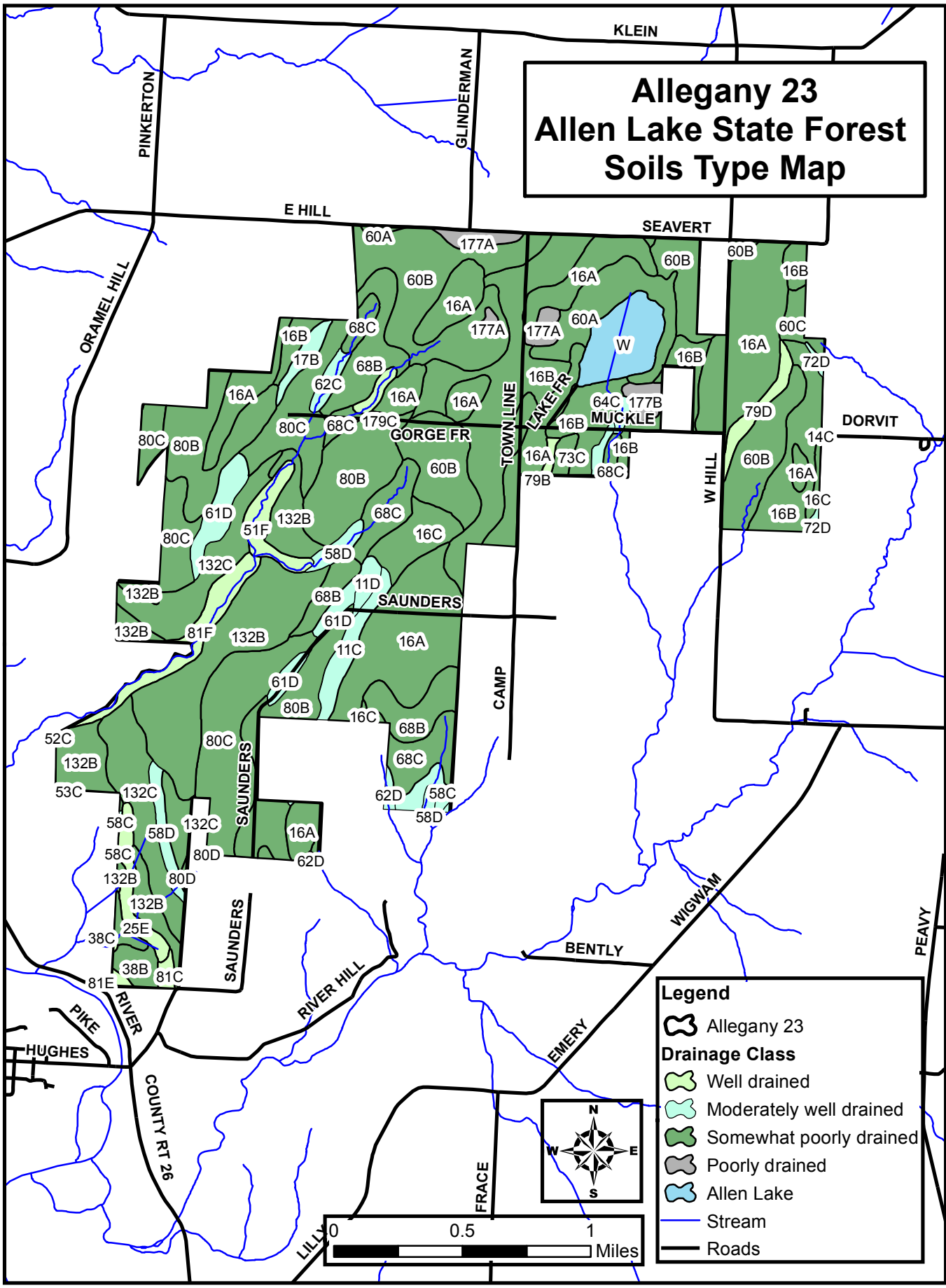
INTERSTATE 86
INTERSTATE 86

Legend









-  Allegany 22
- Drainage Class**
-  Well drained
-  Moderately well drained
-  Somewhat poorly drained
-  Stream
-  Roads



Allegany 23 Allen Lake State Forest Soils Type Map



Legend

-  Allegany 23
- Drainage Class**
-  Well drained
-  Moderately well drained
-  Somewhat poorly drained
-  Poorly drained
-  Allen Lake
-  Stream
-  Roads