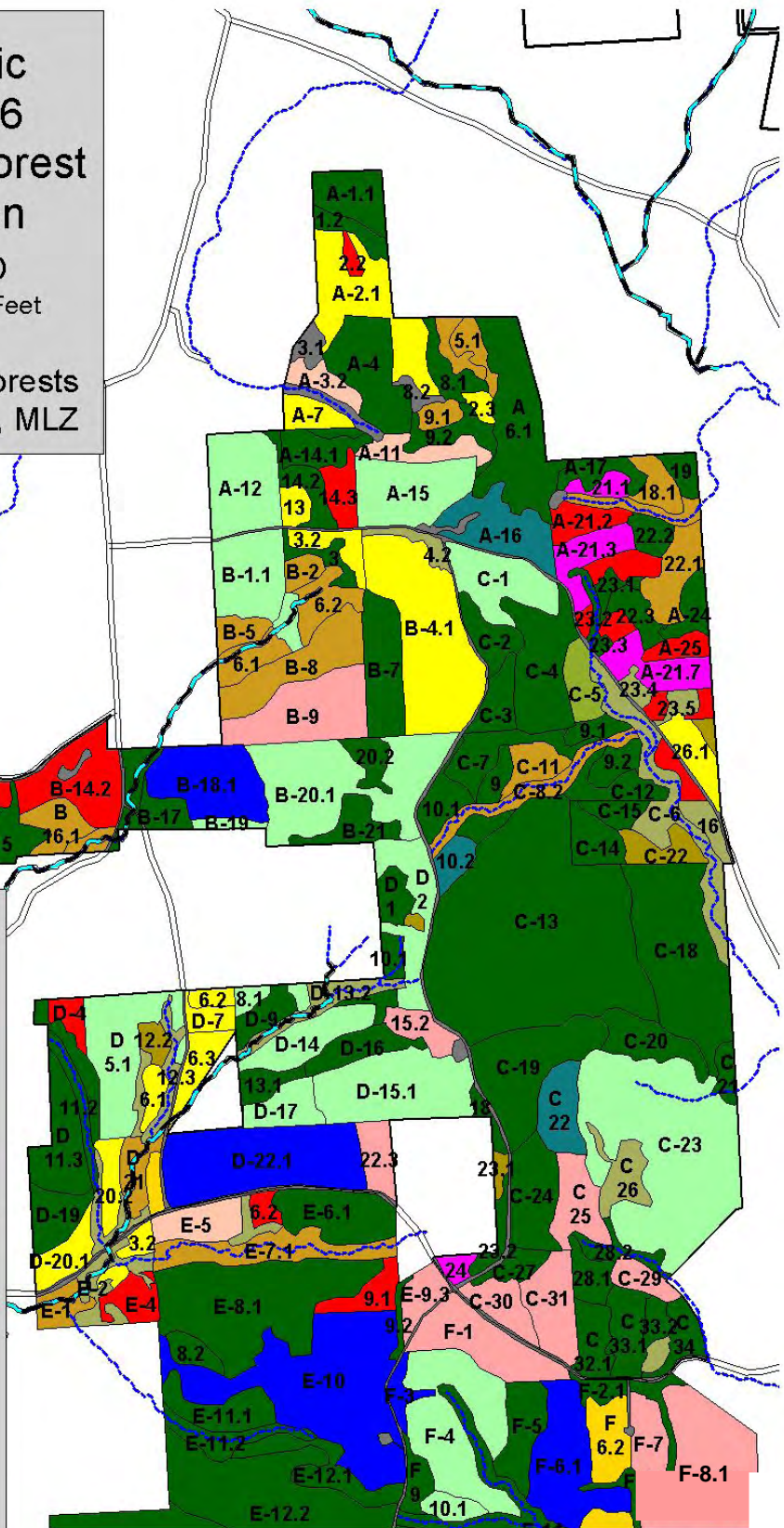


# Inventory Mosaic Cortland R.A. #6 Cuyler Hill State Forest Northern Section

Compartments A-D

700 0 700 Feet

NYS DEC Lands and Forests  
2005 MKA, JMC, MLZ





# Inventory Mosaic Cortland R.A. #6 Cuyler Hill State Forest Southern Section

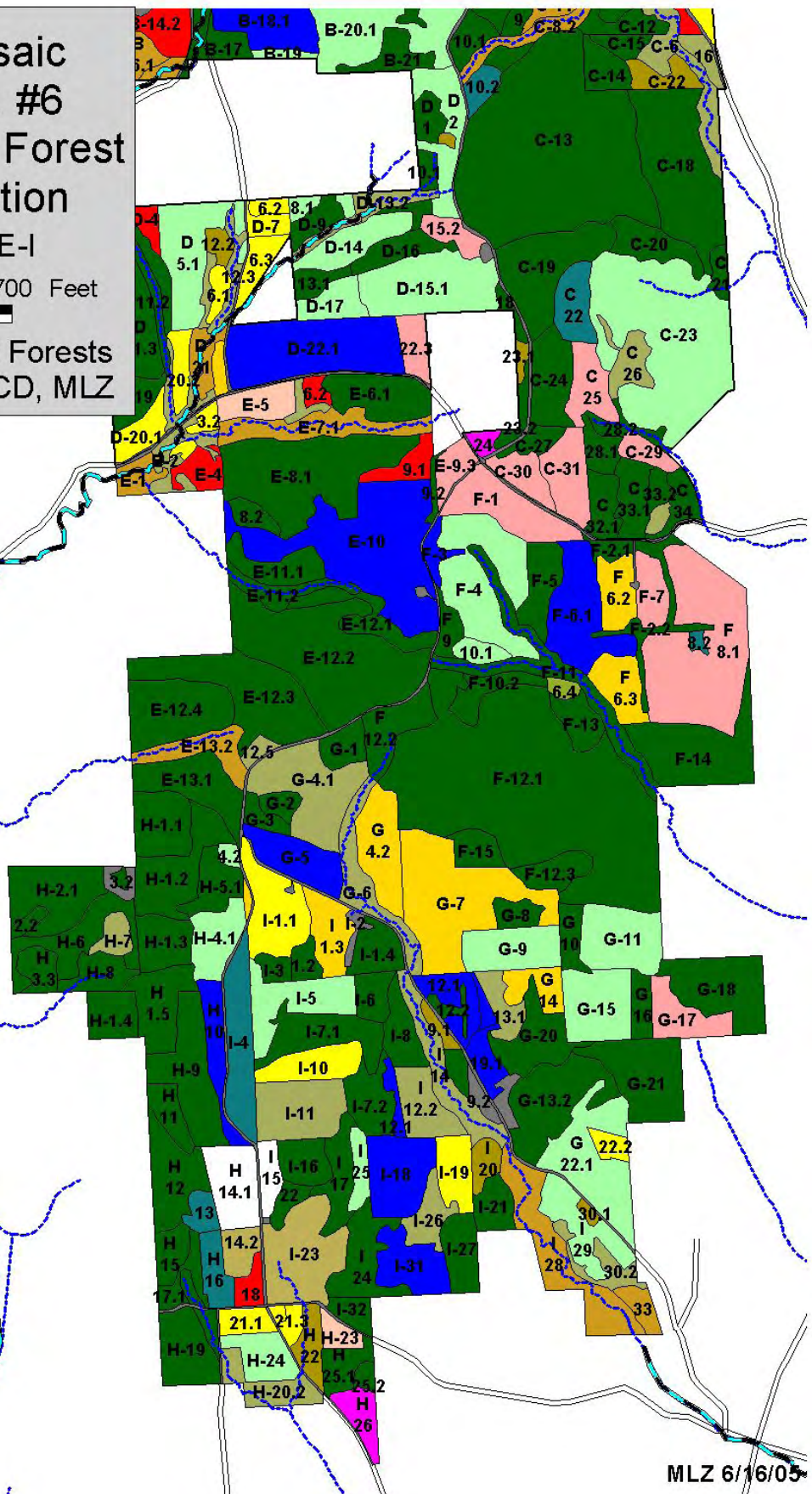
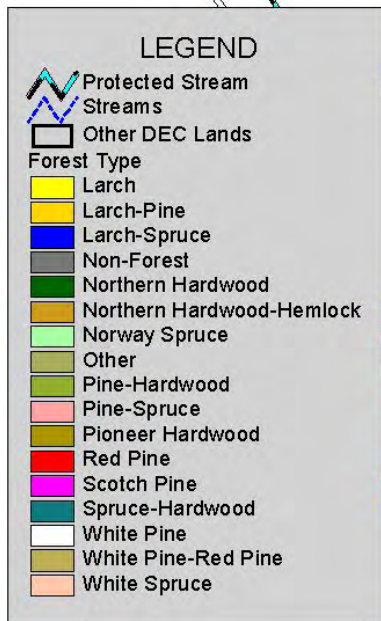
Compartments E-I



700 0 700 Feet

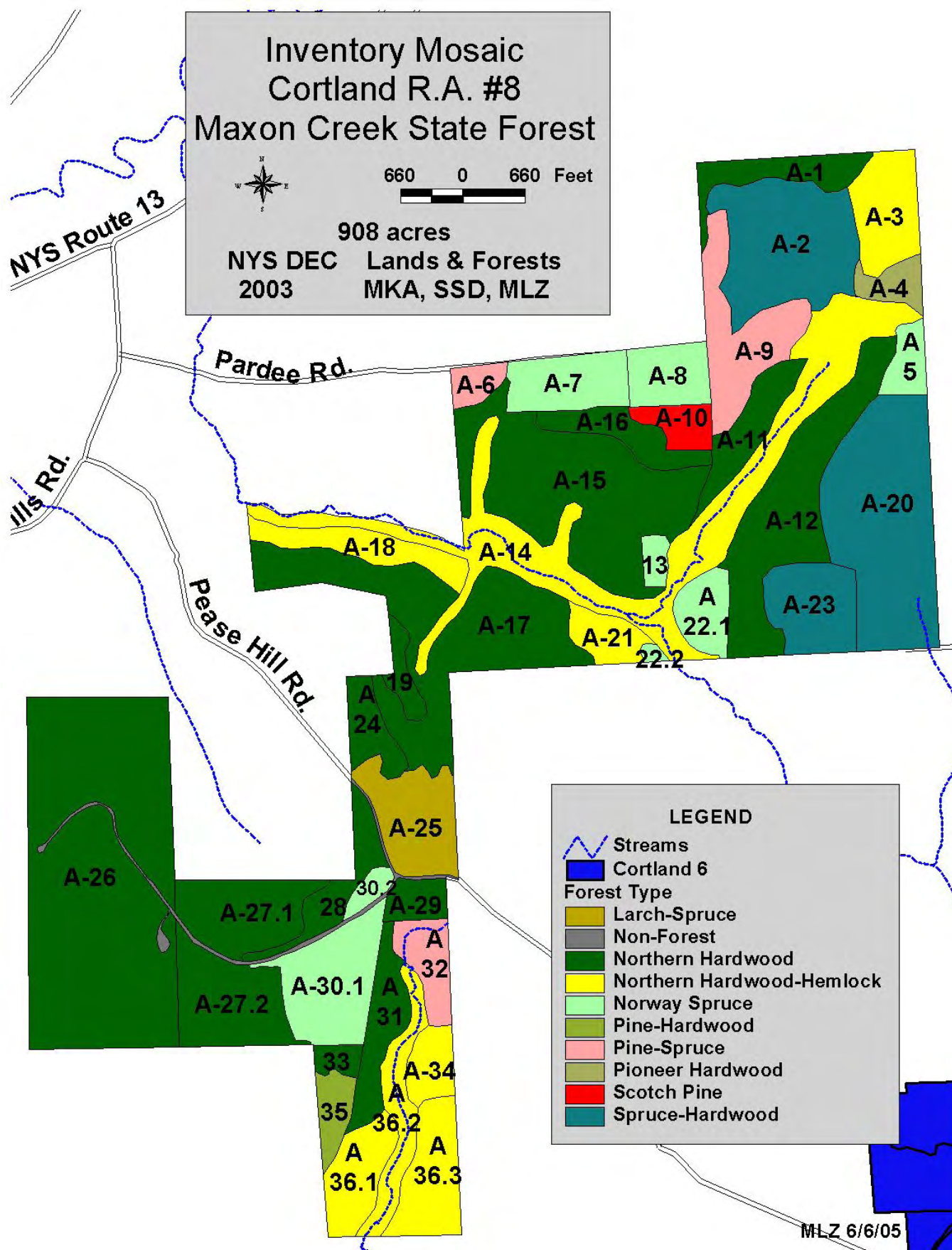


NYS DEC Lands and Forests  
2005 MKA, JMC, HCD, MLZ



MLZ 6/16/05



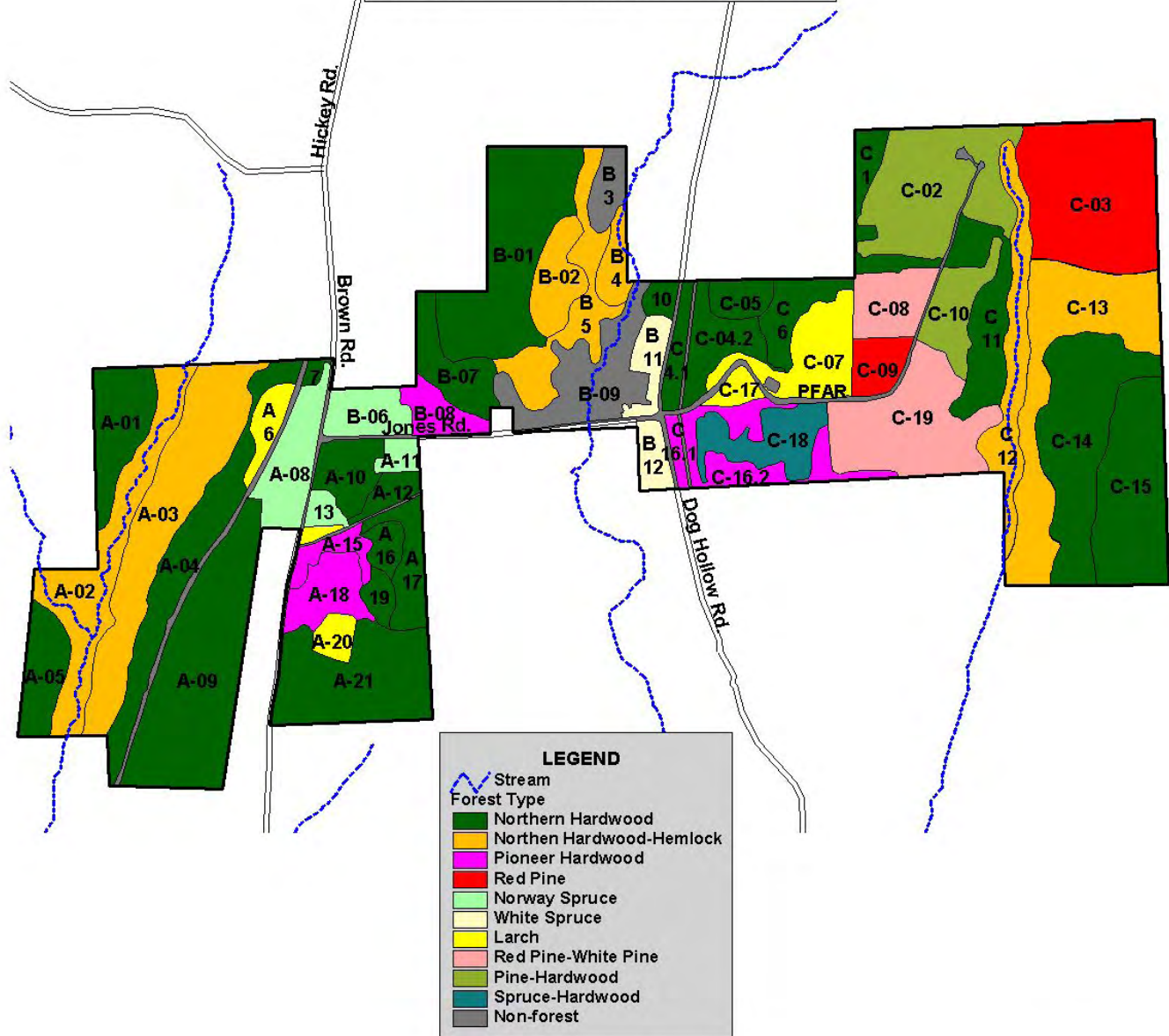


Inventory Mosaic  
Cortland R. A. #16  
Dog Hollow State Forest

723 Acres  
NYS DEC Lands and Forests  
2002 MKA, SSD, MLZ



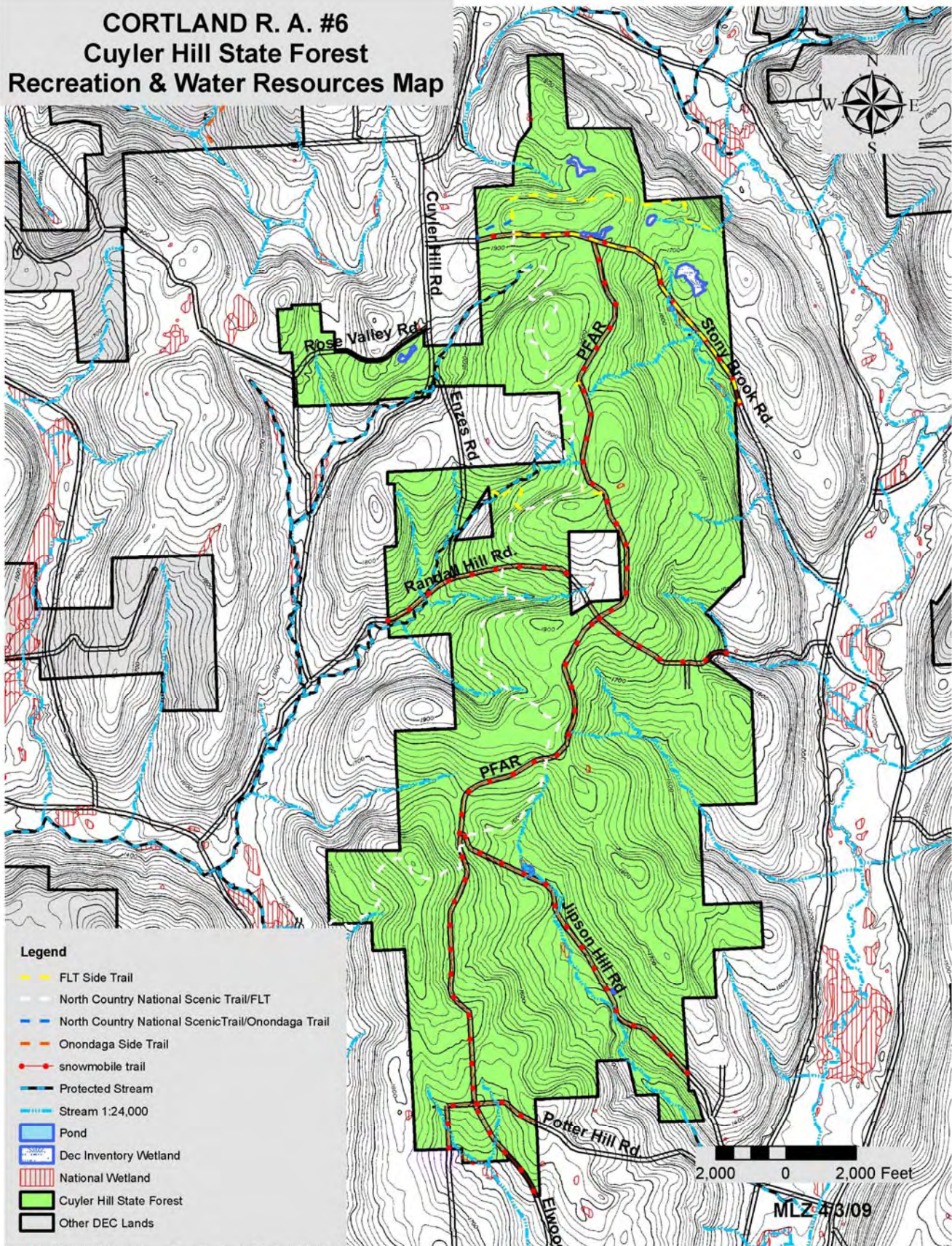
660 0 660 Feet



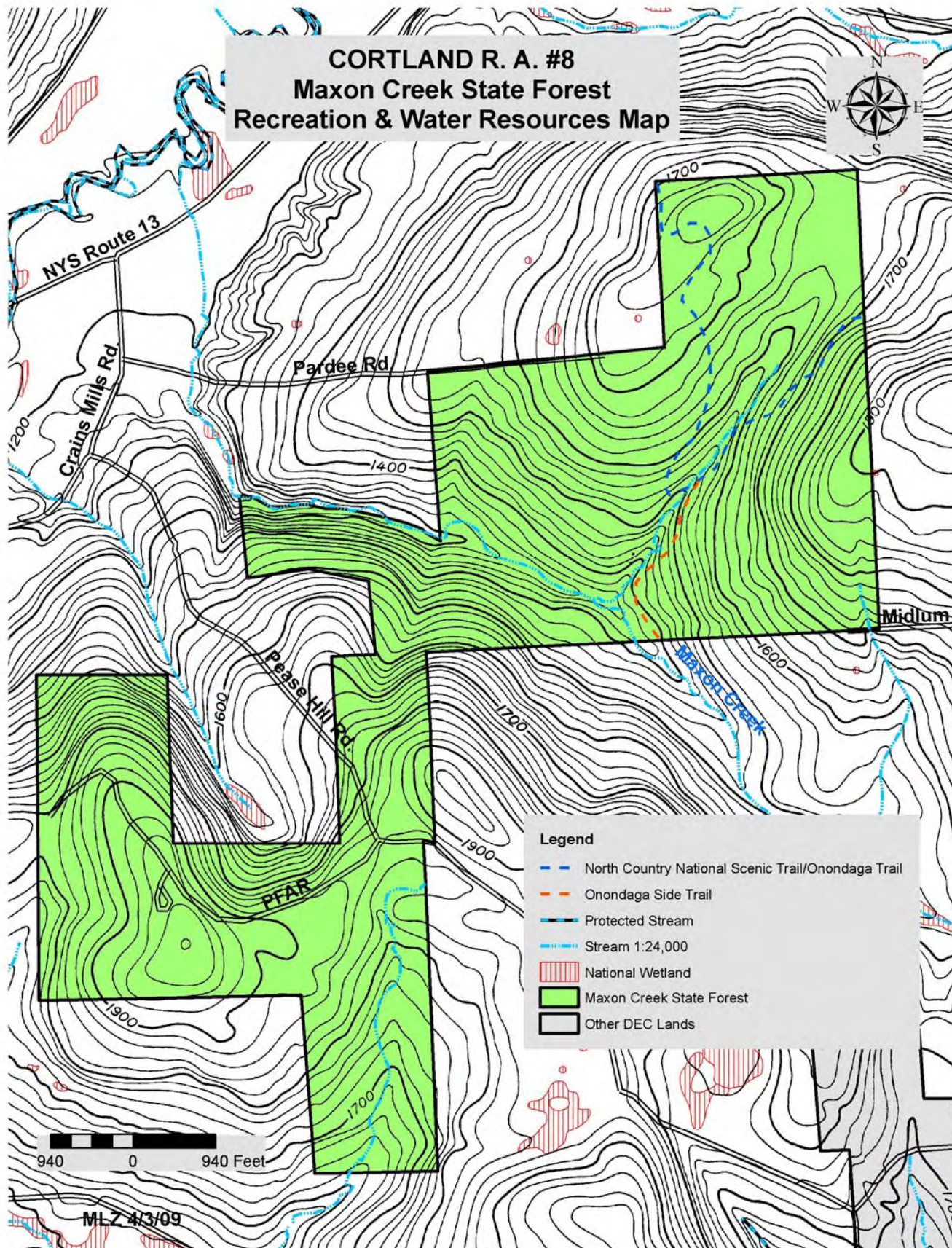
MLZ 6/16/05



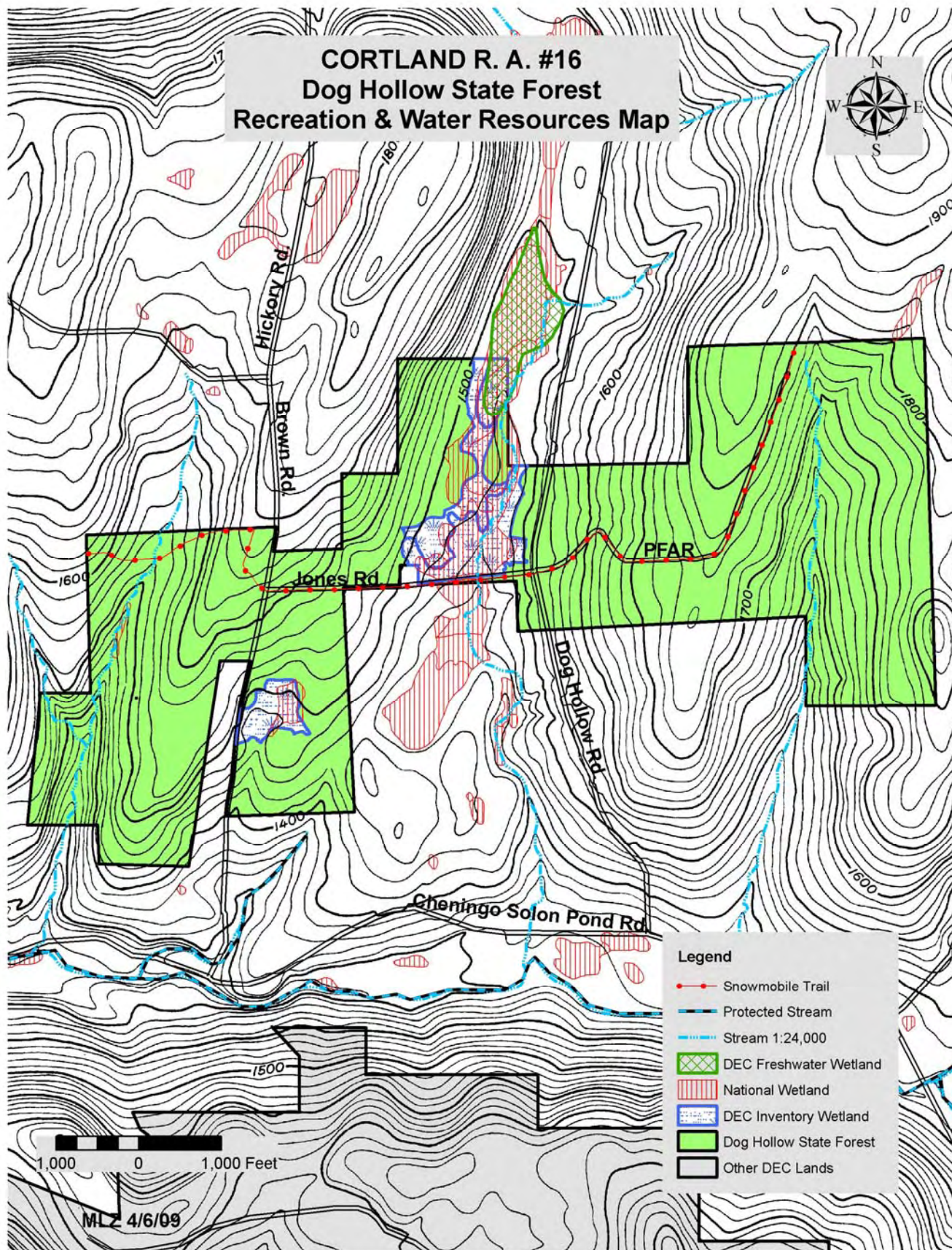
# **CORTLAND R. A. #6** **Cuyler Hill State Forest** **Recreation & Water Resources Map**





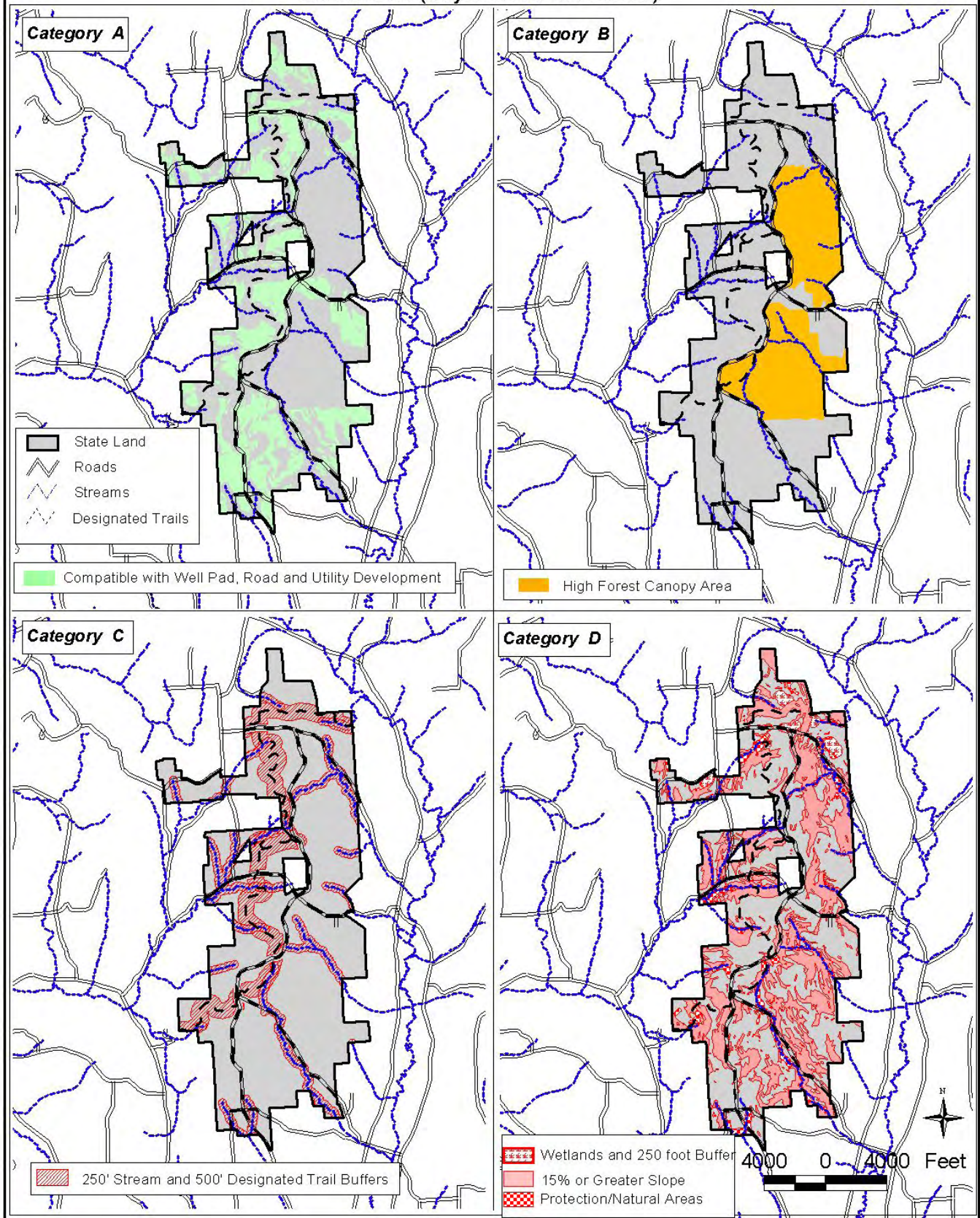






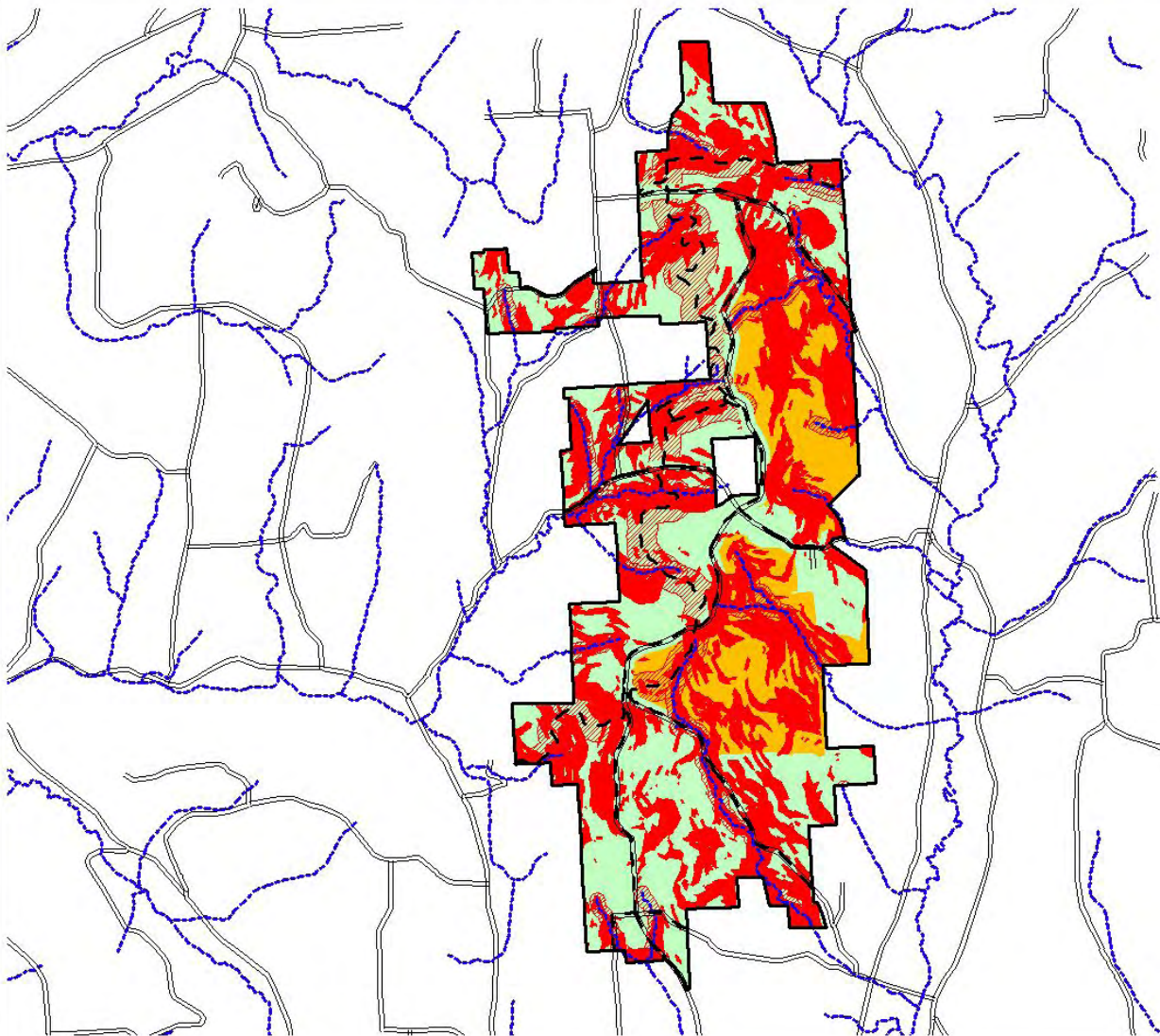


# UMP Oil and Gas Exploration Hierarchy Maps Cortland #6 (Cuyler Hill State Forest)

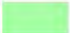





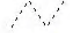





# UMP Comprehensive Oil and Gas Exploration Map Cortland #6 (Cuyler Hill State Forest)



## Oil & Gas Exploration Hierarchy Map Legend

-  Category A - Compatible with well pad, road and utility development.
-  Category B - High Forest Canopy Area - One well pad per State Forest.
-  Category C - 250' Stream & 500' Designated Trail Buffers  
Not compatible with well pad development; compatible with road and utility development.
-  Category D - Protection Areas - Not compatible with well pad, road or utility development.
-  State Boundary
-  Roads
-  Designated Recreational Trails
-  Streams

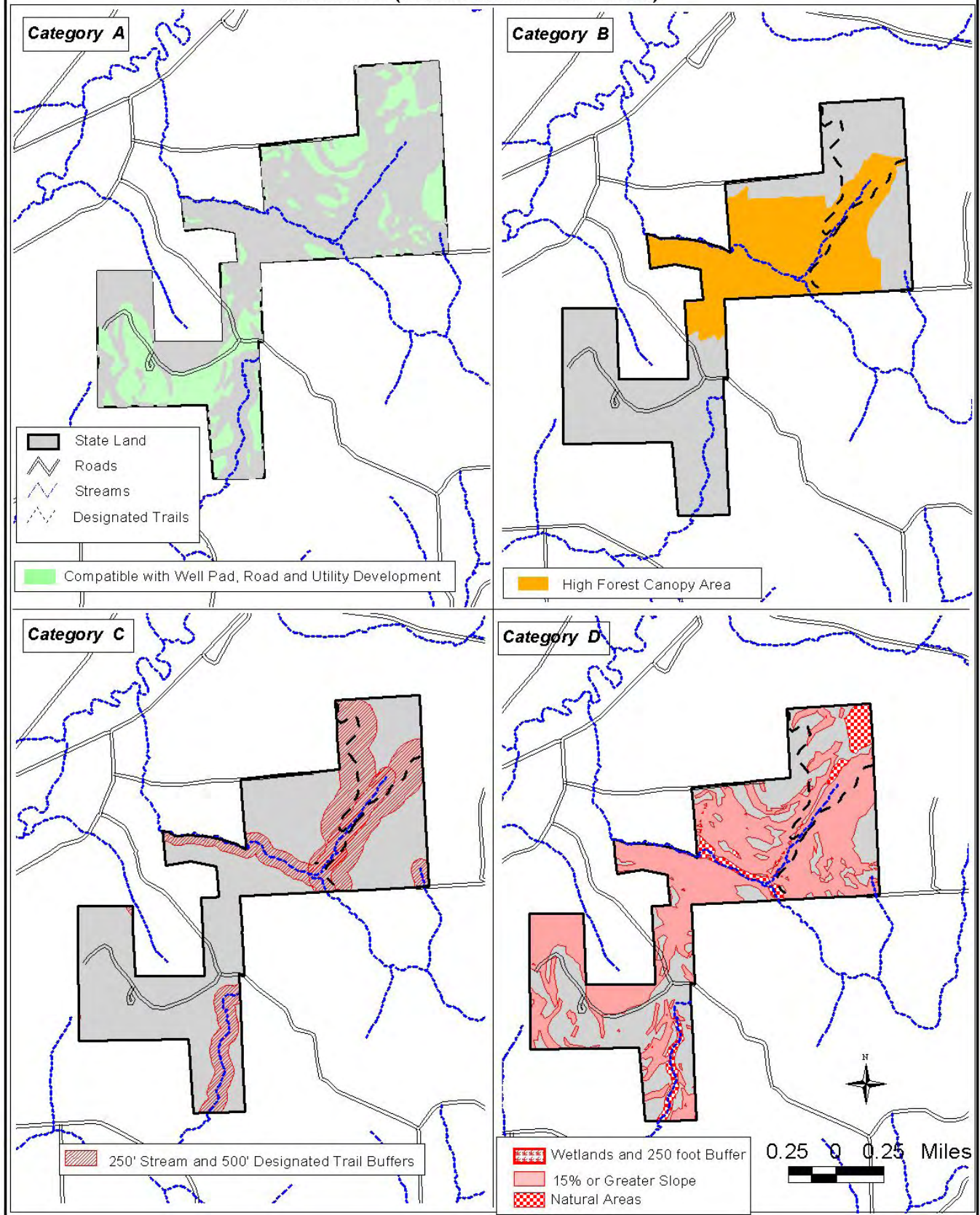


2000 0 2000 4000 Feet



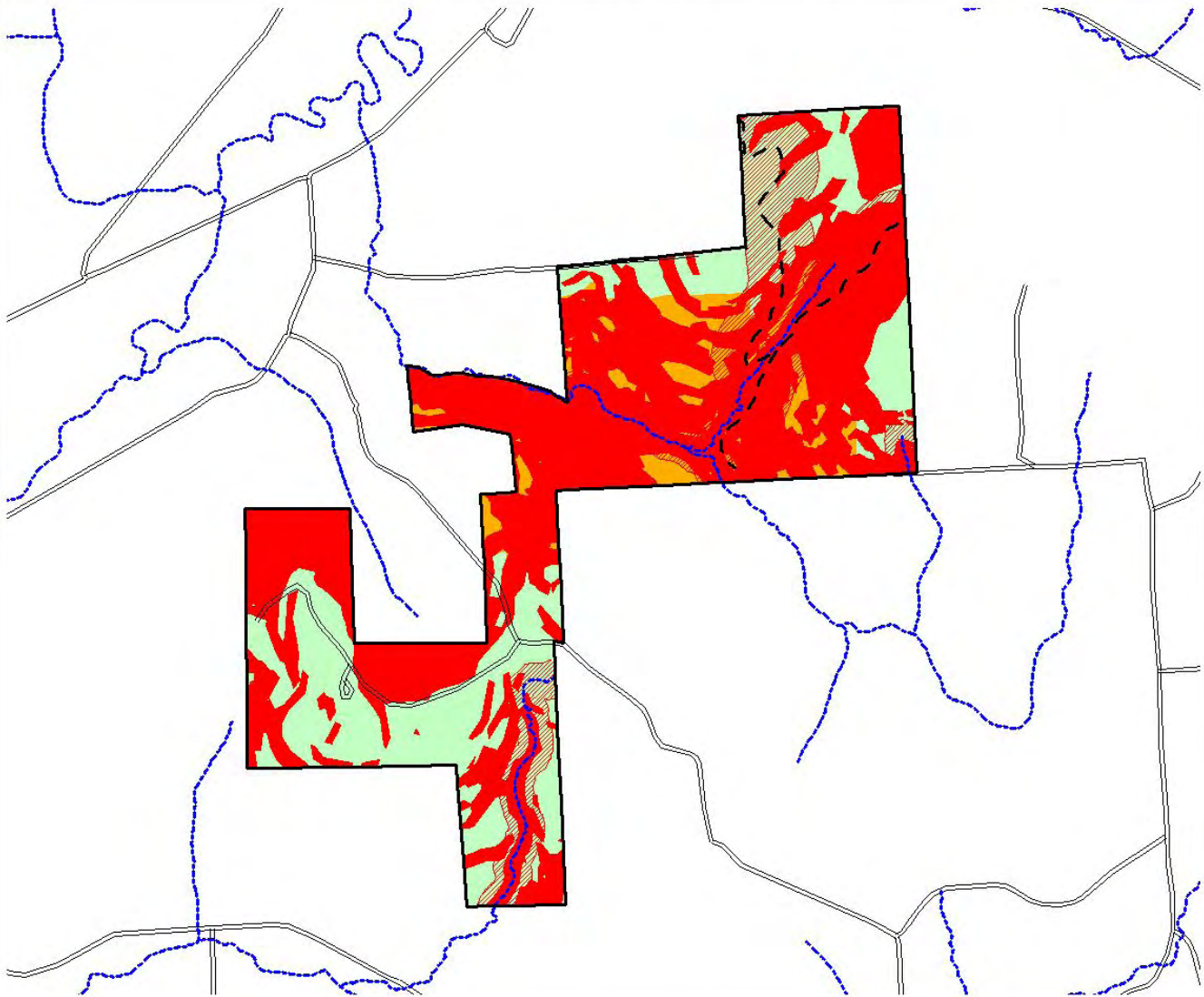


# UMP Oil and Gas Exploration Hierarchy Maps Cortland #8 (Maxon Creek State Forest)

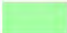






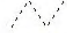






# **UMP Comprehensive Oil and Gas Exploration Map Cortland #8 (Maxon Creek State Forest)**



## ***Oil & Gas Exploration Hierarchy Map Legend***

- |   |   |   |
|---|---|---|
|  | Category A - Compatible with well pad, road and utility development.  |  |
|  | Category B - High Forest Canopy Area - One well pad per State Forest.   |   |
|  | Category C - 250' Stream & 500' Designated Trail Buffers<br>Not compatible with well pad development; compatible with road and utility development. |   |
|  | Category D - Protection Areas - Not compatible with well pad, road or utility development.  |   |
|  | State Boundary  |   |
|  | Roads   |   |
|  | Designated Recreational Trails  |   |
|  | Streams   |   |

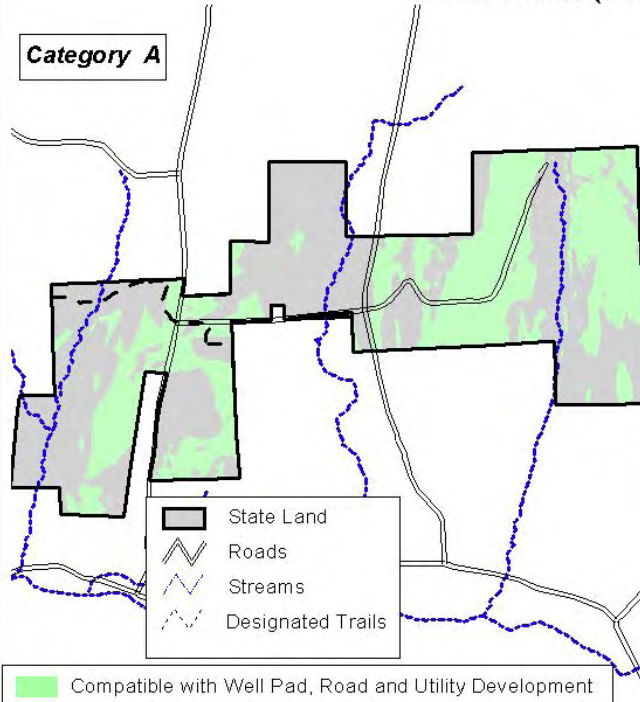
2000      0      2000      4000 Feet



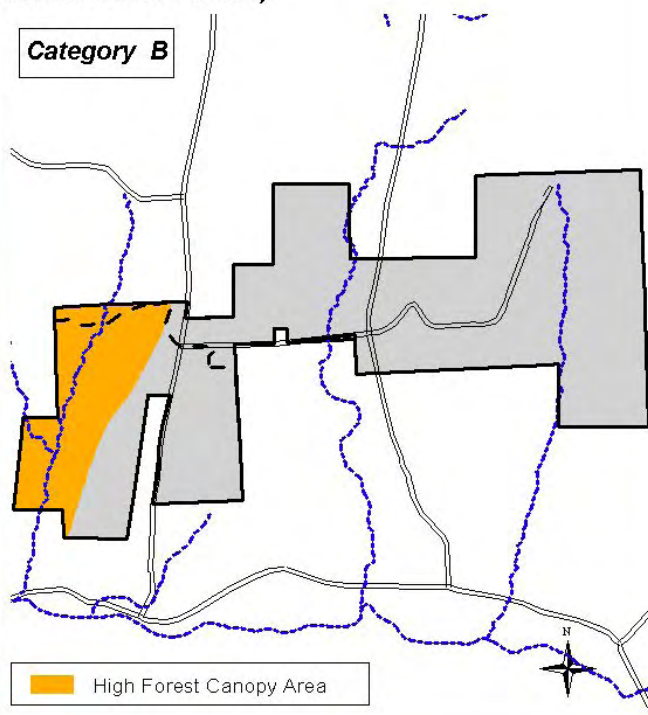


# UMP Oil and Gas Exploration Hierarchy Maps Cortland #16 (Dog Hollow State Forest)

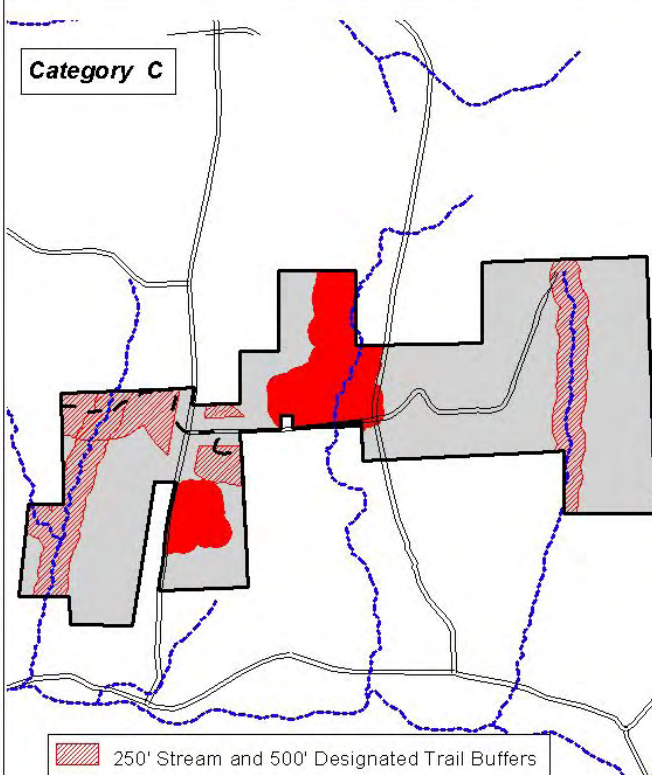
Category A



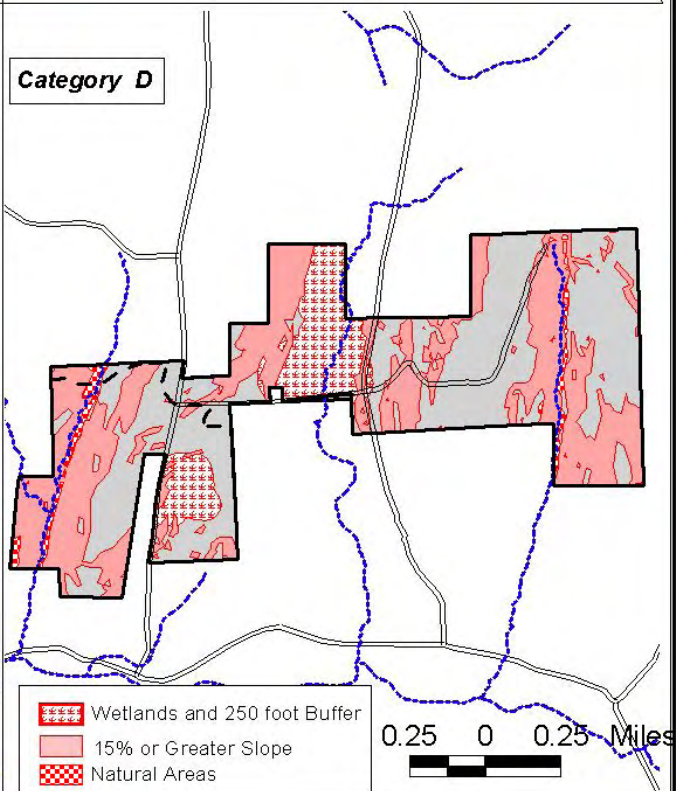
Category B



Category C

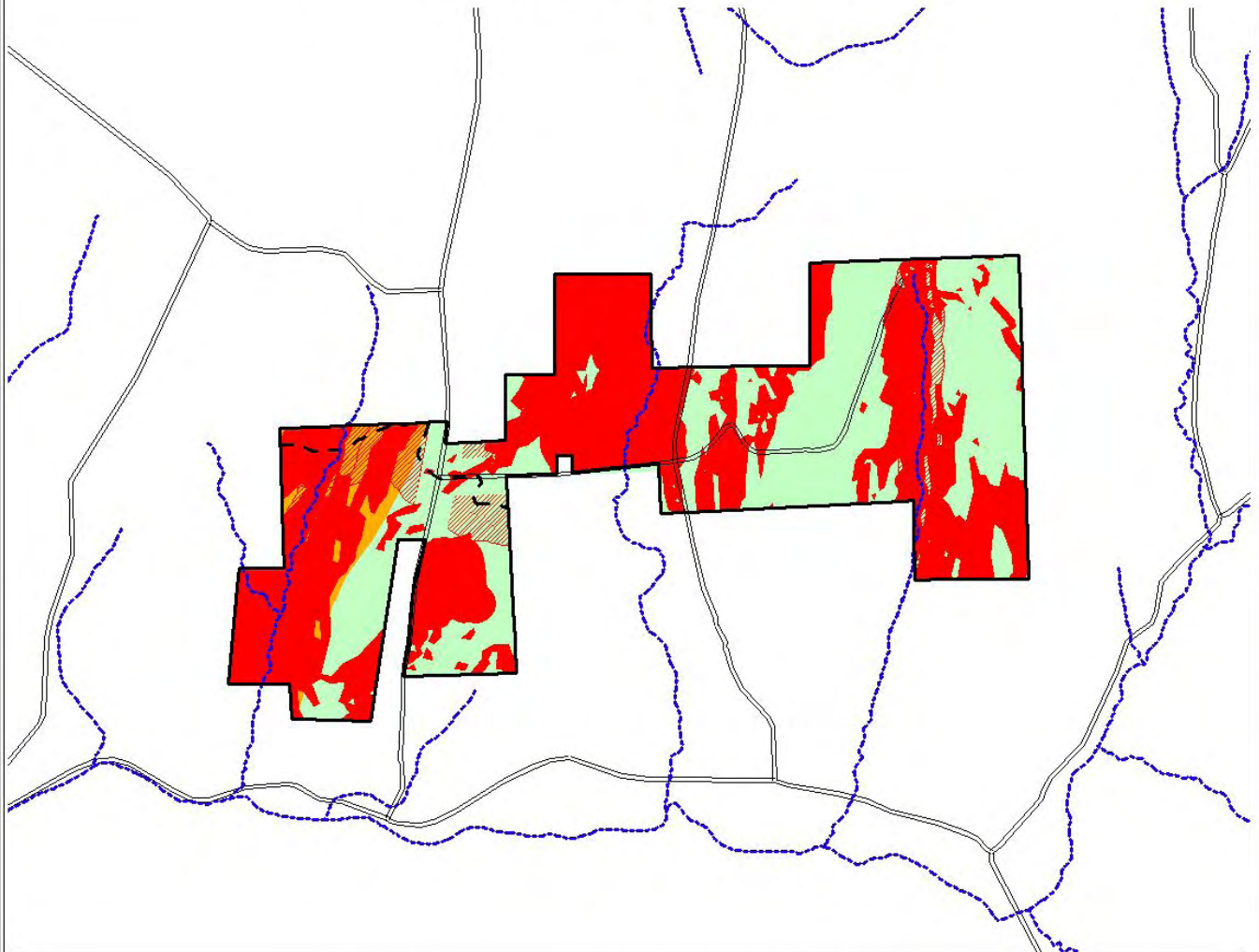


Category D

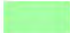






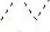





# **UMP Comprehensive Oil and Gas Exploration Map Cortland #16 (Dog Hollow State Forest)**



## ***Oil & Gas Exploration Hierarchy Map Legend***

- |   |   |   |
|---|---|---|
|  | Category A - Compatible with well pad, road and utility development.  |  |
|  | Category B - High Forest Canopy Area - One well pad per State Forest.   |   |
|  | Category C - 250' Stream & 500' Designated Trail Buffers<br>Not compatible with well pad development; compatible with road and utility development. |   |
|  | Category D - Protection Areas - Not compatible with well pad, road or utility development.  |   |
|  | State Boundary  |   |
|  | Roads   |   |
|  | Designated Recreational Trails  |   |
|  | Streams   |   |

2000      0      2000      4000 Feet

