

(Fact Sheet Begins Next)

## Act Now to Continue Receiving Information About This Site!

DEC's Division of Environmental Remediation (DER) now distributes information about contaminated sites *electronically by email*.

If you would like to continue to receive information about the contaminated site featured in this fact sheet:

**You must sign up for the DER email listserv:**

[www.dec.ny.gov/chemical/61092.html](http://www.dec.ny.gov/chemical/61092.html)

DER cannot register your email address - only the email address owner can do so. If you already have signed up for the listserv for the county in which the site is located, you need do nothing.



### **Why You Should Go “Paperless”:**

Get site information faster and share it easily;

Receive information about all sites in a chosen county - read what you want, delete the rest;

It helps the environment and stretches your tax dollars.

**If “paperless” is not an option for you**, call or write to the DER project manager identified in this fact sheet. Indicate that you need to receive paper copies of fact sheets through the Postal Service. Include the site name in your correspondence. The option to receive paper is available to individuals only. Groups, organizations, businesses, and government entities are assumed to have email access.

This page intentionally left blank.



# FACT SHEET

## State Superfund Program

Receive Site Fact Sheets by *Email*. See "For More Information" to Learn How.

**Site Name:** Wurtsboro Lead Mine  
**DEC Site #:** 353013  
**Address:** Wurtsboro Ridge State Forest  
Wurtsboro, NY 12790

Have questions?  
See  
"Who to Contact"  
Below

### Interim Remedial Measure to be Performed

The New York State Department of Environmental Conservation (NYSDEC), in coordination with the United States Environmental Protection Agency (USEPA), will perform an expedited cleanup for a portion of the Wurtsboro Lead Mine site ("site") located in the Wurtsboro Ridge State Forest, Wurtsboro, Sullivan County. Please see the map for the site location. Documents related to the cleanup of this site can be found at the locations identified below under "Where to Find Information."

#### Interim Remedial Measure (IRM) Work Plan

An IRM is a cleanup activity that may be performed when a source of contamination or exposure pathway (the way in which a person may contact contamination) can be effectively addressed without extensive investigation and evaluation.

This IRM, which is expected to begin on or about November 14, 2016, will be performed by USEPA's Emergency Response Program and will take approximately one month to complete. The IRM will place temporary soil or stone covers over areas of contaminated soils to reduce any direct human exposures.

Several areas along the Delaware & Hudson Canal (D&HC) towpath and the lower railroad bed roadway have been shown to have elevated levels of lead and zinc. These areas will be covered with up to one foot of soil or stone to prevent any direct contact with the contaminated soils.

The piping and culverts that drain beneath the lower railroad bed will be cleared of debris to prevent overland flow of waters out of the wetlands and over the railroad bed.

A small deposit of contaminated fine-grained mill tailings has eroded from the ore milling area (OMA) and created a peninsula of sediments within the canal. This deposit will be excavated to prevent people and pets from contacting it. The excavated materials will be moved back to the OMA and covered as outlined below.

The approximately one-acre OMA is located approximately 120 east of the canal towpath and will be covered with soil or stone and graded to prevent direct human exposure to the contaminated materials. Water drainage will be redirected to flow around this area to avoid recontamination.

Additional signage will be added to high traffic areas warning the public of the potential hazards of coming into contact with contaminated soils or drinking lead-contaminated water.

### **Summary of the Investigation**

The site is located on the west side of the Shawangunk Ridge approximately two miles north of the village of Wurtsboro and immediately east of the Wurtsboro airport.

Major mining operations began at the Wurtsboro lead mine in the 1830s and continued intermittently until approximately 1930. Ore and low-grade overburden was extracted from the mine to reach a vein of galena (lead ore) and sphalerite (zinc ore), resulting in the creation of three waste tailings piles near the top of the ridge and a mill tailings pile at the base of the ridge. All of these piles exhibit high levels of both lead and zinc.

The New York State Department of Environmental Conservation, working in cooperation with the United States Environmental Protection Agency, has investigated the hillside below the mine, the tailings piles, wetlands and the Delaware & Hudson Canal at the base of the ridge to define the areas where elevated levels of lead and zinc exist.

NYSDEC will keep the public informed throughout the investigation and cleanup of the site.

Additional site details are available on USEPA's On-Scene Coordinator website at:

[https://www.epaosc.org/site/site\\_profile.aspx?site\\_id=11295](https://www.epaosc.org/site/site_profile.aspx?site_id=11295)

Additional site details are also available on NYSDEC's website at:

<http://www.dec.ny.gov/cfmx/extapps/derexternal/haz/details.cfm?pageid=3&progno=353013>

## **FOR MORE INFORMATION**

### **Where to Find Information**

Project documents are available at the following locations to help the public stay informed.

Mamakating Library  
Director: Greg Wirszyla  
156-158 Sullivan Street  
Wurtsboro, NY  
Phone: (845) 888-8004

<http://mamakatinglibrary.org>

NYSDEC Region 3 Office  
21 South Putt Corners Road  
New Paltz, NY 12561  
Phone: (845) 256-3154  
(Please call for an appointment)

## Who to Contact

Comments and questions are always welcome and should be directed as follows:

### Project Related Questions

Keith Gronwald  
Department of Environmental Conservation  
Division of Environmental Remediation  
625 Broadway  
Albany, NY 12233-7014  
518-402-9667  
keith.gronwald@dec.ny.gov

or

Kiera Thompson  
518-402-9663  
kiera.thompson@dec.ny.gov

### Site-Related Health Questions

Wendy Kuehner  
New York State Department of Health  
Bureau of Environmental Exposure Investigation  
Empire State Plaza, Corning Tower, Room 1787  
Albany, NY 12237  
518-402-7860  
wendy.kuehner@health.ny.gov

### State Forest Use Questions

Jeffrey Wiegert  
NYSDEC  
21 South Putt Corners Rd.  
New Paltz, NY 12561  
(845) 256-3084  
jeffrey.wiegert@dec.ny.gov

**We encourage you to share this fact sheet with neighbors and tenants, and/or post this fact sheet in a prominent area of your building for others to see.**

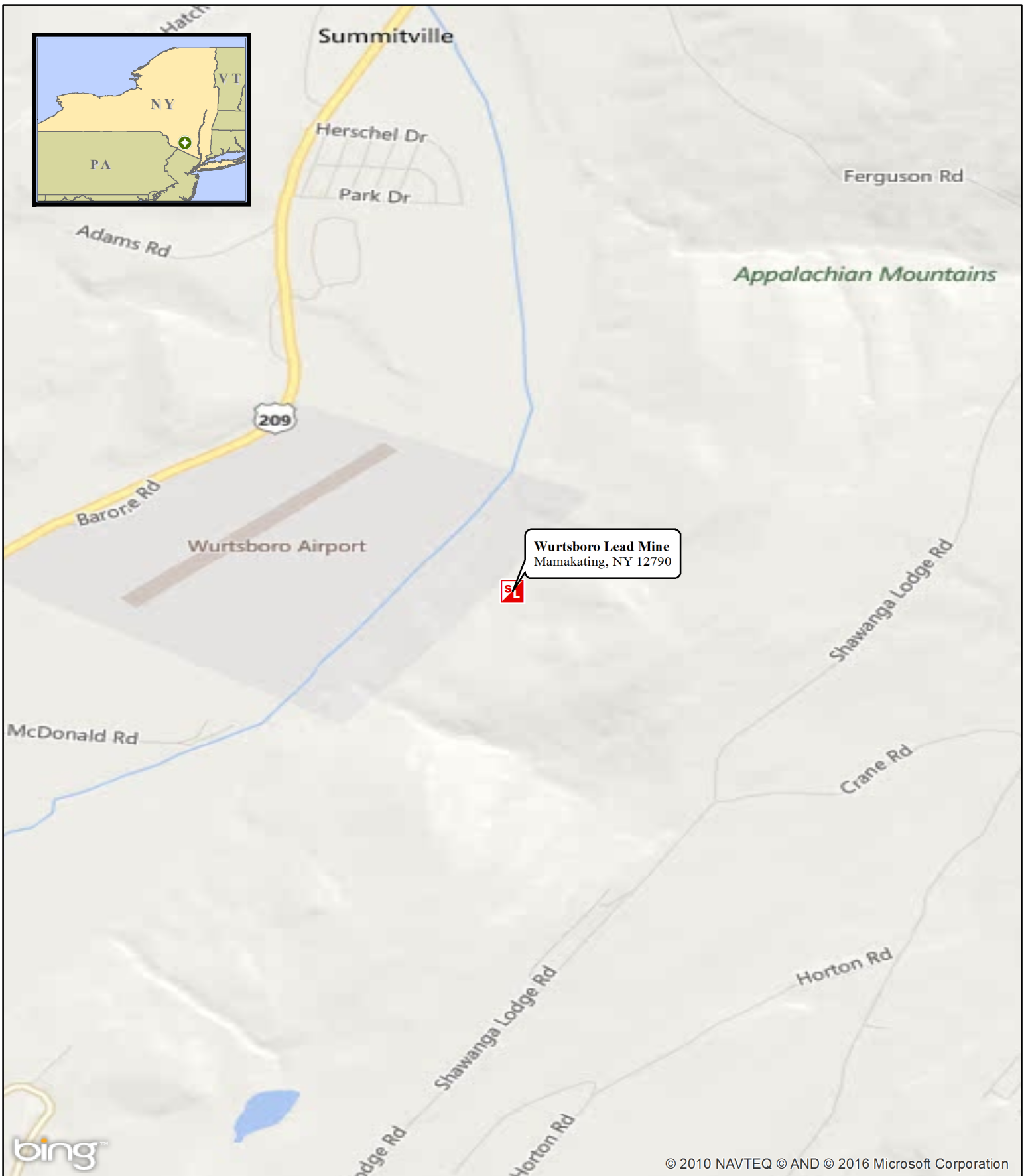
### **Receive Site Fact Sheets by Email**

Have site information such as this fact sheet sent right to your email inbox. NYSDEC invites you to sign up with one or more contaminated sites county email listservs available at the following web page: <http://www.dec.ny.gov/chemical/61092.html>. It's quick, it's free, and it will help keep you *better informed*.



As a listserv member, you will periodically receive site-related information/announcements for all contaminated sites in the county(ies) you select.

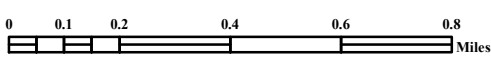
Note: Please disregard if you already have signed up and received this fact sheet electronically.



**Wurtsboro Lead Mine**  
 Mamakating, NY 12790

**Legend**

 Site Location



In Association With Scientific and Environmental Associates, Inc., Environmental Compliance Consultants, Inc., Avatar Environmental, LLC, On-Site Environmental, Inc. and Sovereign Consulting, Inc

<b>Figure 1: Site Location Map</b>	
WURTSBORO LEAD MINE SITE MAMAKATING, NEW YORK	
U.S. ENVIRONMENTAL PROTECTION AGENCY REMOVAL SUPPORT TEAM 3 CONTRACT # EP-S2-14-01	
DATE MODIFIED: 9/21/2016	
GIS ANALYST:	T. BENTON
EPA OSC:	A. CONFORTINI
RST SPM:	M. LANG
FILENAME:	SITE_LOCATION_MAP.MXD



SCALE  
1:2,000

LEGEND

- Delaware & Hudson (D&H) Canal
- Culvert
- EPA Soil Sample Location**
- Lead Result Below 400 mg/kg
- Lead Result Above 400 mg/kg
- Areas of Concern to be Addressed as Part of 2016 Removal Action Work Plan**
- D&H Canal Peninsula Area
- Towpath and Lower Railroad Cap Areas\*
- Ore Milling Area (OMA) Cap Area
- Additional Areas of Concern Identified**
- Drainage Pathway
- Tailing Pile
- Wetland Area
- Smelter Area

Notes:  
 1) D&H = Delaware & Hudson  
 2) OMA = Ore Milling Area  
 3) \* Only the areas directly along the towpath and lower railroad will be capped.  
 4) As part of the 2016 Removal Action to be conducted at the Site, the area of concern located within the D&H Canal will be excavated and the area of concern associated with the OMA, towpath, and lower railroad bed will be capped. Drainage management activities will also be conducted in the OMA and lower roadway areas.

Figure 2: Removal Action Work Plan Area of Concern Map

WURTSBORO LEAD MINE SITE  
MAMAKATING, NEW YORK

UNITED STATES ENVIRONMENTAL PROTECTION AGENCY  
REMOVAL SUPPORT TEAM 3  
CONTRACT # EP-S2-14-01

In Association With  
Scientific and Environmental Associates, Inc.,  
Environmental Compliance Consultants, Inc.,  
Aviate Environmental, LLC, On-Site Environmental,  
Inc., and Sovereign Consulting, Inc.

GIS ANALYST	J. CAMERON
EP/TOC	A. CONNORS
POST/SPC	M. LANG
PROJECT #	000001007000
FIGURE	2
REVISION	
DATE MODIFIED	10/27/2016

