



Department of  
Environmental  
Conservation

# FACT SHEET

State Superfund Program

Taconic

136 Coon Brook Road  
Petersburgh, NY 12138

**SITE No. 442047**

**NYSDEC REGION 4**

**June 2018**

## **Where to Find Information:**

*Project documents are available at these location(s) to help the public stay informed.*

### **Petersburg Town Hall**

65 Main Street  
(518) 658-3777

### **Who to Contact:**

*Comments and questions are always welcome and should be directed as follows:*

#### **Project-Related Questions**

Jason Johnson, Project Manager  
NYSDEC

625 Broadway  
Albany, NY 12233  
(518) 402-9676

[Jason.Johnson@dec.ny.gov](mailto:Jason.Johnson@dec.ny.gov)

#### **Health-Related Questions**

Dawn Hettrick  
NYSDOH

Empire State Plaza – NYSDOH  
Corning Tower Room #1787  
(518) 402-7860

[dawn.hettrick@health.ny.gov](mailto:dawn.hettrick@health.ny.gov)

**For more information about New York's State Superfund Program, visit:**

[www.dec.ny.gov/chemical/8439.html](http://www.dec.ny.gov/chemical/8439.html)

## **Remedial Investigation Update**

Tonoga, Inc. d/b/a/ Taconic has begun a detailed environmental study at the Taconic site ("site") located at 136 Coon Brook Road, Petersburgh, NY, Rensselaer County. Please see the map for the site location. Documents related to the cleanup of this site can be found at the location(s) identified to the left under "Where to Find Information."

**Investigation Work Plan:** The investigation work plan, called a "Remedial Investigation / Feasibility Study Work Plan," was developed by Taconic and submitted to New York State Department of Environmental Conservation (NYSDEC) under New York's State Superfund Program. The site is listed as a Class "2" site in the State Registry of Inactive Hazardous Waste Sites (list of State Superfund sites). A Class 2 site represents a significant threat to public health or the environment; action is required. NYSDEC and the New York State Department of Health (NYSDOH) will oversee the investigation.

**Highlights of the Site Investigation:** The investigation will define the nature and extent of contamination in soil, surface water, groundwater and any other parts of the environment that may be affected. A report describing the data collected as part of this investigation work plan is expected in 2019.

Past sampling at the site has determined that perfluorooctanoic acid (PFOA) contamination exists in the production wells on the site and PFOA contamination in off-site groundwater has also been documented.

Key components of the investigation work include:

- Installing and sampling soil borings to identify possible on-site sources of contamination;
- Sampling for Per- and Polyfluoroalkyl Substances (PFAS) as well as other compounds;
- Collecting surface water, sediment, and geophysical data on- and off-site; and
- Installing and sampling groundwater wells to monitor impacts from areas of concern both on-site and off-site.

Throughout the investigation and feasibility phase of the remedial program, Taconic will continue to perform maintenance of private wells where Point of Entry Treatment (POET) systems have been installed, along with support of the Petersburgh Municipal Well Granulated Activated Carbon treatment system for the purpose of removing PFOA that is in the well water, in accordance with the requirements of the Order on Consent with the NYSDEC.

# STATE SUPERFUND PROGRAM

**Next Steps:** The information collected during the investigation will be summarized in a report. After the site investigation is substantially complete, Taconic, with oversight provided by NYSDEC, will conduct a "Feasibility Study." This study uses information developed during the site investigation to develop and evaluate potential ways to clean up contamination related to the site. The information collected during the site investigation may also support the conclusion that no action, or no further action, is needed to address site-related contamination. NYSDEC will then develop a draft cleanup plan, called a "Proposed Remedial Action Plan." This plan describes the remedy preferred by NYSDEC, or, if warranted, a no action or no further action alternative.

The draft cleanup plan explains the decision that led to the preferred remedy by discussing each alternative and the reasons for choosing or rejecting it. The goal of the plan will be to ensure the protection of public health and the environment. NYSDEC will announce the draft cleanup plan in a future fact sheet, and will present it to the public for its review and comment during a 30-day comment period and at a public meeting.

**Site Description:** The 23.54-acre site is located at the intersection of Coonbrook Road and State Route 22 in Petersburg, Rensselaer County, NY. The site, currently an operating manufacturing facility, features nine structures related to manufacturing and three parking lots. Surrounding parcels are residential or unimproved. There is an unnamed stream that runs through the site, and the remainder of the site consists of green space (lawns) as well as woodlands. The site has been used for manufacturing polytetrafluoroethylene (PTFE) coated fabrics since approximately 1961 through today. PTFE previously contained PFOA as a processing agent.

Additional site details, including environmental and health assessment summaries, are available on NYSDEC's Environmental Site Remediation Database (by entering the Site ID, 442047) at:

<http://www.dec.ny.gov/cfm/externalapps/derexternal/index.cfm?pageid=3>

**State Superfund Program Overview:** New York's State Superfund Program (SSF) identifies and characterizes suspected inactive hazardous waste disposal sites. Sites that pose a significant threat to public health and/or the environment go through a process of investigation, evaluation, cleanup and monitoring.

NYSDEC attempts to identify parties responsible for site contamination and require cleanup before committing State funds.

For more information about the SSF, visit:

<http://www.dec.ny.gov/chemical/8439.html>

---

*We encourage you to share this fact sheet with neighbors and tenants, and/or post this fact sheet in a prominent area of your building for others to see.*

---

## Receive Site Fact Sheets by Email

Have site information such as this fact sheet sent right to your email inbox. NYSDEC invites you to sign up with one or more contaminated sites county email listservs at:

[www.dec.ny.gov/chemical/61092.html](http://www.dec.ny.gov/chemical/61092.html)

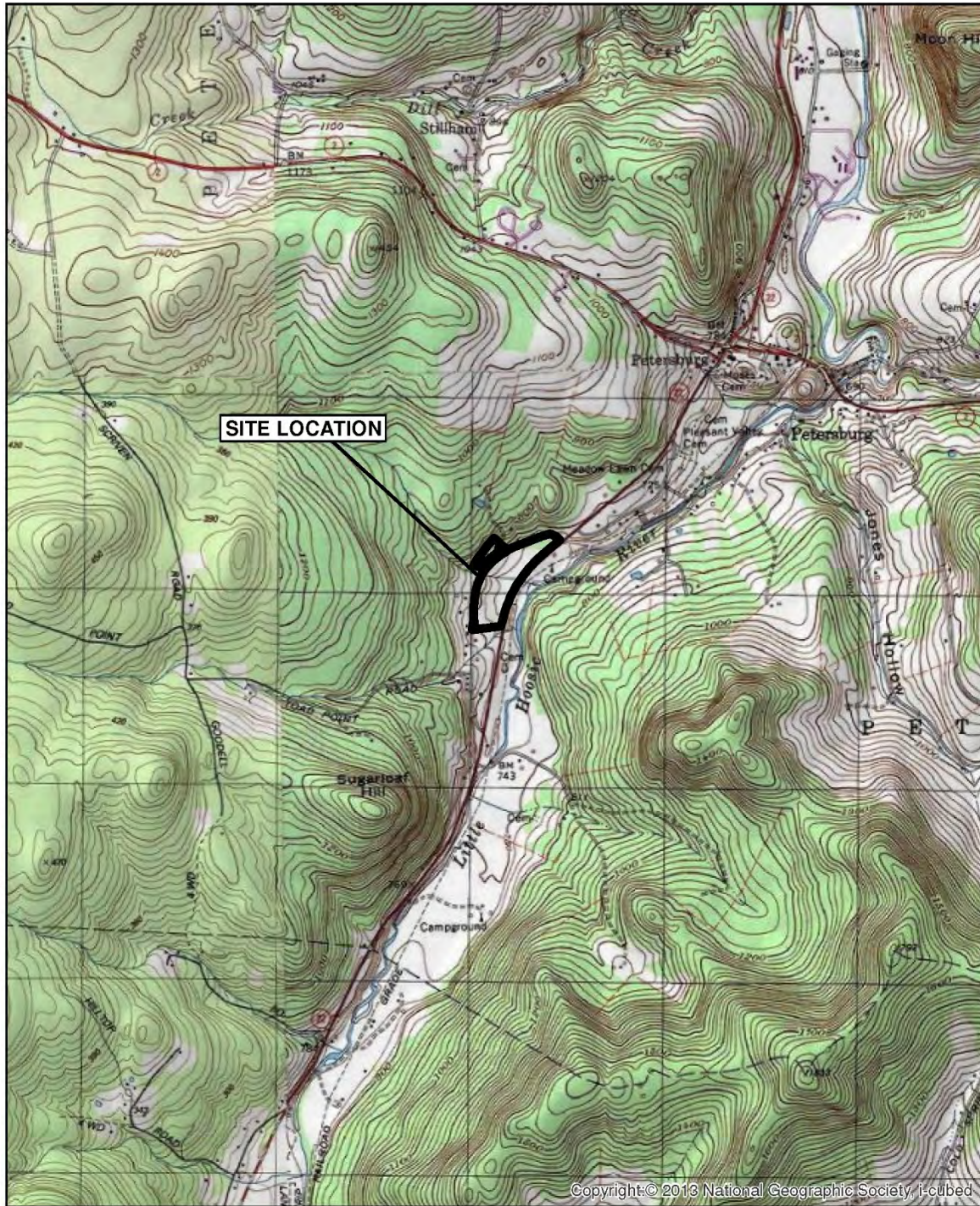
It's quick, it's free, and it will help keep you better informed. As a listserv member, you will periodically receive site-related information/ announcements for all contaminated sites in the county(ies) you select.

Note: Please disregard if you already have signed up and received this fact sheet electronically.

# STATE SUPERFUND PROGRAM

PLOTDATE: 12/14/16 3:05:07 PM Gardneme

I:\Sichenzia-Ross.27400\63716\_RI-Fs-Work-Plan\Docs\Reports\RIFS Work Plan\Figures\Figure 1 Site Location.mxd



MAP LOCATION

PETERSBURG, NEW YORK

SITE LOCATION

