



**Department of
Environmental
Conservation**

Saranac Lake Gas Co. Inc. Pontiac Bay and Brandy Brook Cleanup Remedial Construction Activities

Site No. 516008

March 13, 2017

Project Team

NYSDEC

- Sarah Saucier, P.E.
- Michael Mason, P.E.



NYSDOH

- Wendy Kuehner, P.E.



AMEC

- Mark Stelmack, P.E.



Land Remediation

- Lisa Gorton, P.E.



Saranac Lake Gas Company

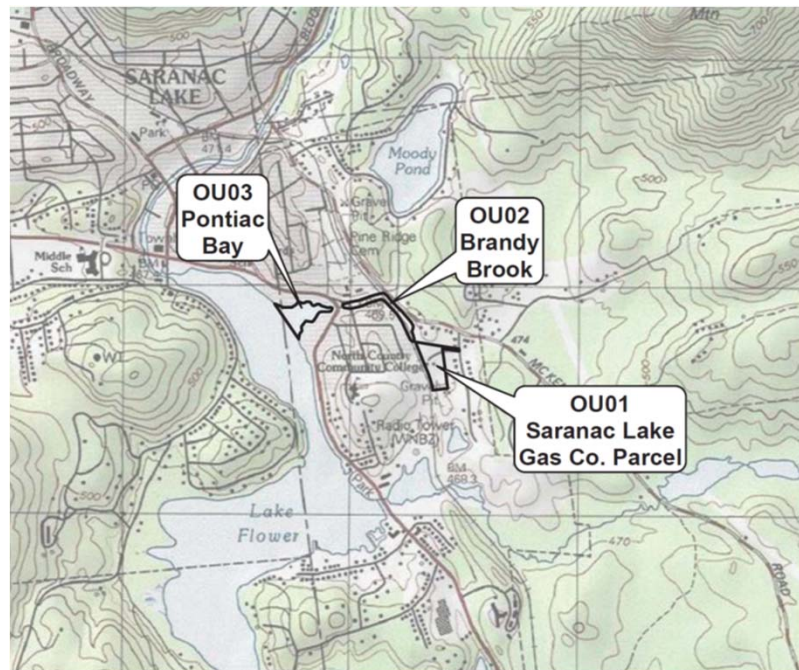
- Former Manufactured Gas Plant (MGP) operated at the site from late 1800s to 1940s
- Plant located on Payeville Lane, adjacent to the Adirondack Scenic Railroad



- Used coal to manufacture gas for the village of Saranac
- Condensed tar (coal tar), pictured left, produced as a by-product
- Coal tar migrated into Brandy Brook and Lake Flower

Operable Units

Represents a portion of the site that for technical reasons can be addressed separately to investigate, eliminate, or mitigate a release



Selected Cleanup Remedy – OU2 Brandy Brook

- Excavate an estimated 5,800 cubic yards of contaminated sediment/soil within and along Brandy Brook to an anticipated depth of 4.5 feet.
- Restoration of excavated area using a Department-approved Wetland Restoration Plan

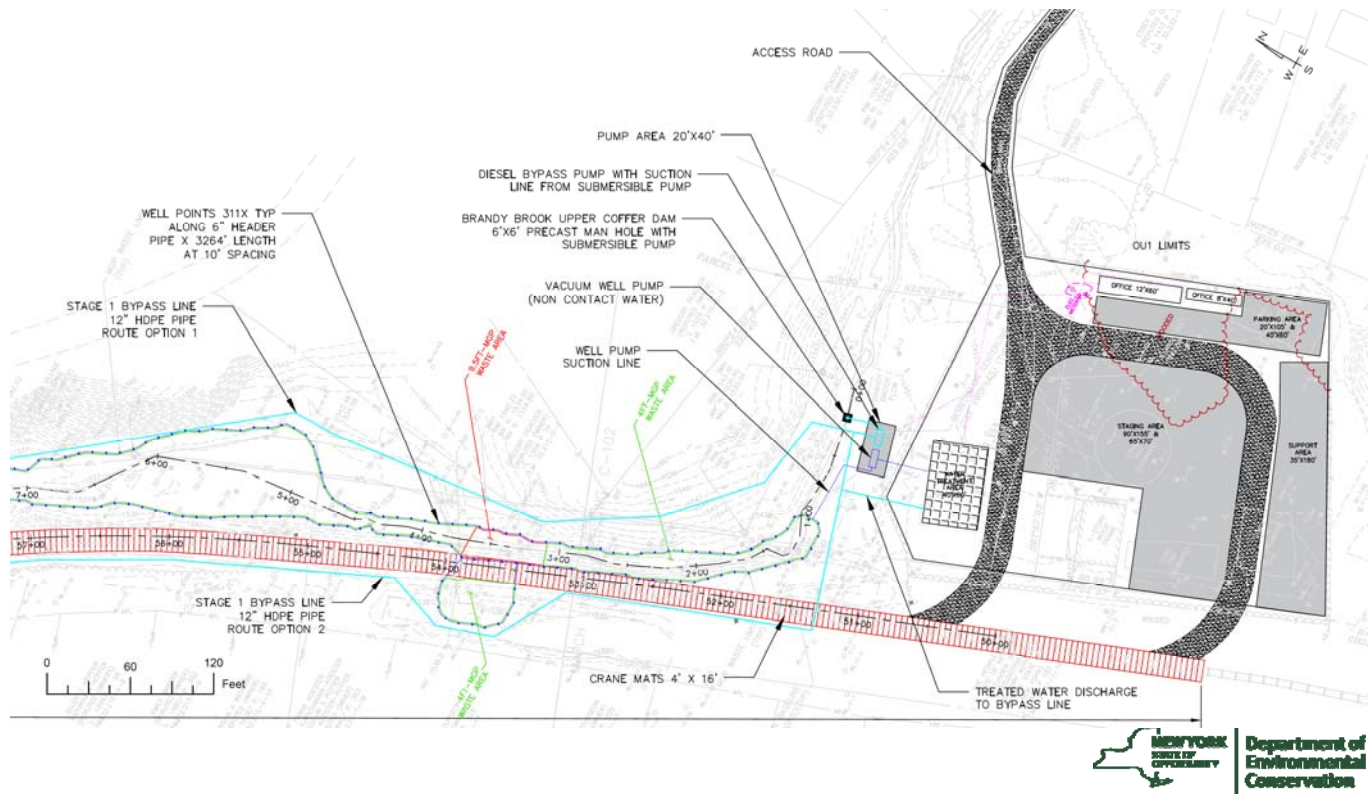


Remedial Construction Process – OU2 Brandy Brook

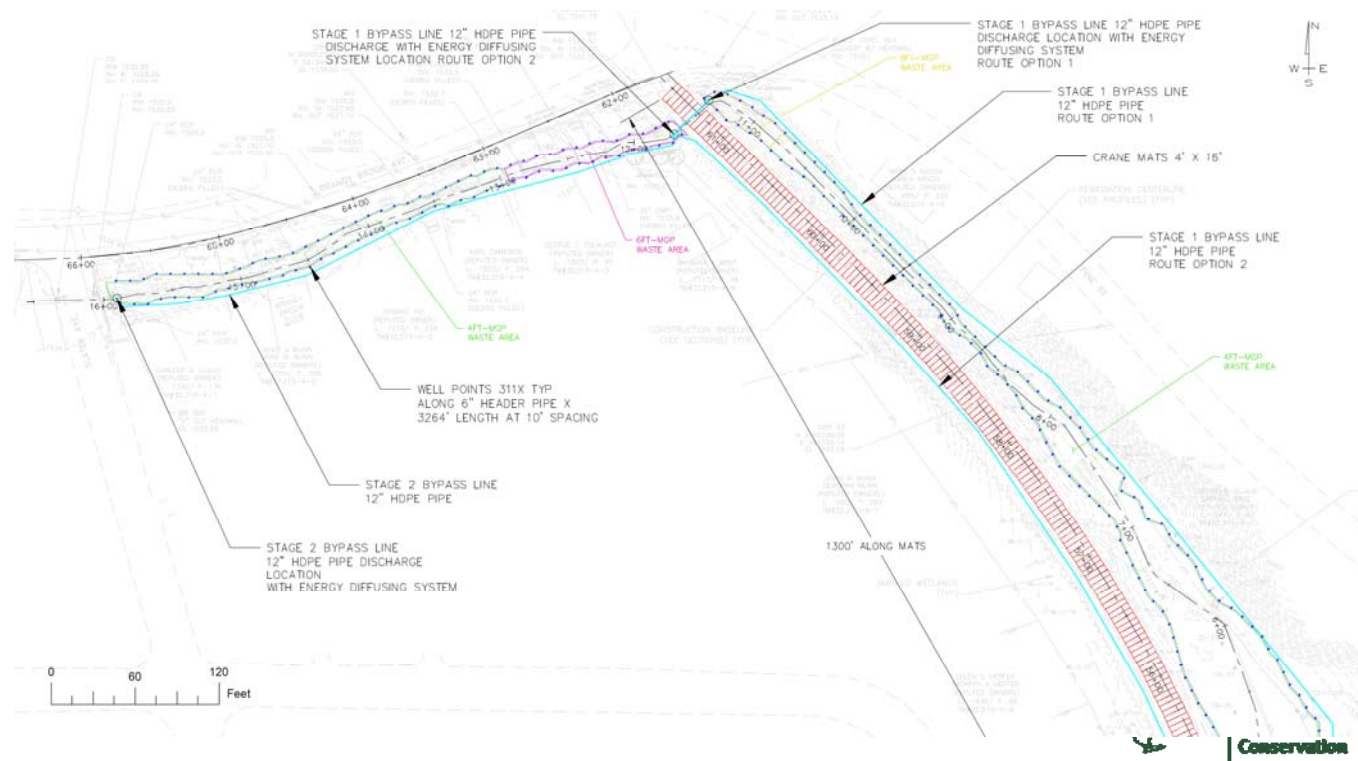
Prime contractor: Land Remediation ***Oversight:*** Mactec

- Excavation per remedial design plans, following safe practices
- Areas of the brook will be dewatered to allow for excavation
- Following excavation, areas will backfilled with approved clean fill
- Disturbed areas will be restored via an approved Restoration Plan and monitored to confirm reestablishment

Brandy Brook – Remedial Construction



Brandy Brook – Remedial Construction



Selected Cleanup Remedy – OU3 Pontiac Bay

March 2015 ROD

- Dewater and isolate Pontiac Bay to allow use of excavator to mechanically remove 16,900 cubic yards of contaminated sediment for off-site disposal
- Restoration of excavated area using a Department-approved Wetland Restoration Plan

DEC has decided not to dewater Pontiac Bay based on disruption to the local community and difficulties handling large volumes of water

Selected Cleanup Remedy – OU3 Pontiac Bay

2018 Modification

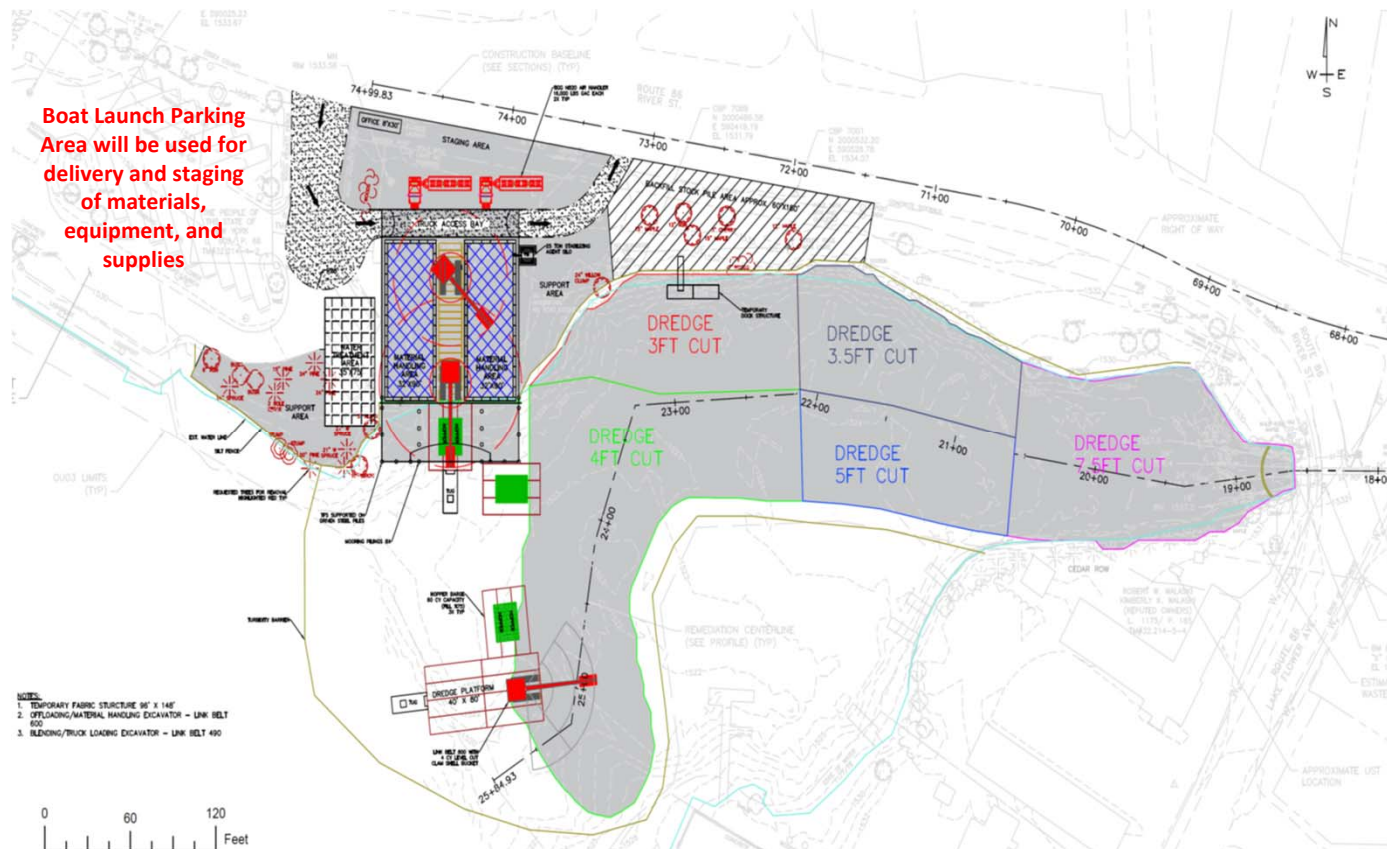
- Remedy is being modified using an “Explanation of Significant Difference,” which will be issued by DEC prior to start of work
- Pontiac Bay will no longer be dewatered
- Sediment excavation will be performed using an excavator equipped with a clamshell bucket placed on a floating platform
- Same amount and areas of contaminated sediment being removed and disposed of as the originally selected remedy

Remedial Construction Process – OU3 Pontiac Bay

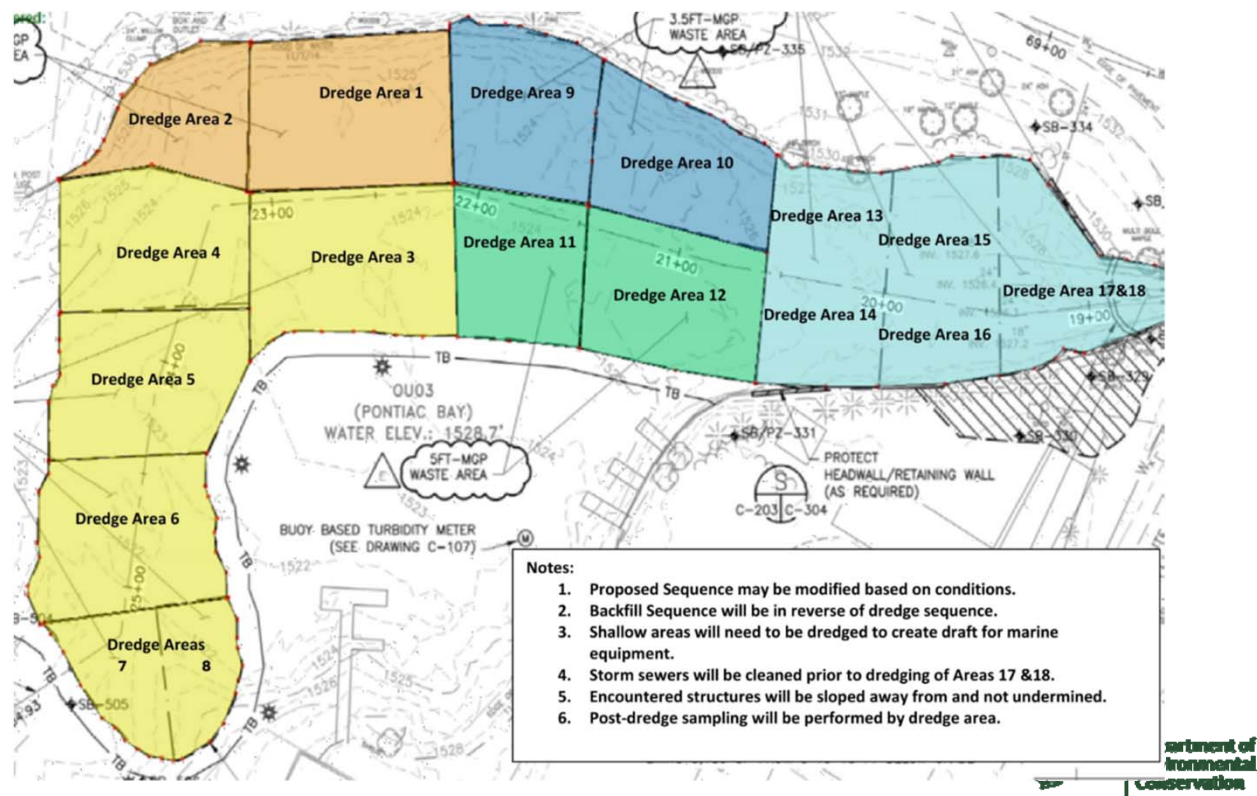
Prime contractor: Land Remediation ***Oversight:*** Mactec

- Excavation of impacted sediment in bay using an excavator and clamshell bucket, will be placed on a floating platform
- Sediment will need to be dewatered prior to disposal
- Trucks will be loaded in a sprung structure to lessen odors, noise, and visual impacts
- Excavated area will be backfilled with clean soil, restored in accordance with an approved Restoration Plan, and monitored to confirm reestablishment

Pontiac Bay – Remedial Construction



Pontiac Bay – Remedial Construction



Typical Equipment Setup



Typical Setup

The turbidity curtain prevents disturbed sediment from distributing beyond the work area. A floating platform is used as a base for the excavator.



Excavator

An excavator will be used with a clamshell bucket to minimize the dispersion of contaminated sediments outside of the work area..

Sprung Structure



The dredged material will be loaded onto trucks in a sprung structure with an air filtration system. This controls odors, dust, and other nuisances from leaving the site.



What to Expect during Construction

- Typical schedule: Monday to Friday, 7:30 a.m. to 6:00 p.m.
- Clean loading practices and standard decontamination procedures for project equipment.
- Construction noise from equipment such as small excavators and small dump trucks.
- Occasional temporary road closures; flagman directing traffic as needed.

What to Expect during Construction

- Efforts will be made to minimize impacts, including but not limited to:
 - Loading trucks underneath a tent with an air filtration system
 - Covering loads with tarps prior to leaving the site
 - Using odor control foam on the excavation sediment
 - Storm water management and erosion controls to prevent runoff from the site and recontamination
 - Noise and vibration monitoring

DEC Lake Flower Boat Launch

DEC Lake Flower Boat launch will remain open for launching and retrieving boats, but parking will not be available

- Boat launch property will be used for receiving boats, but parking will not be available
- Ice Palace parcel will be used for loading and unloading barges, processing dredged sediments; and loading and unloading trucks
- Individuals launching boats during construction hours should take care when accessing the boat launch since there may be conflicts with construction related traffic

DEC Lake Flower Boat Launch

Alternate parking will be required after launching boat

- Paddlers and others with car-top boats are encouraged to use the DEC Ampersand Bay Hand Launch
- Boaters may use the DEC Second Pond Boat Launch but this is a heavily used boat launch and parking may be limited, especially on weekends
- DEC is working with the Village of Saranac Lake to identify possible parking alternatives

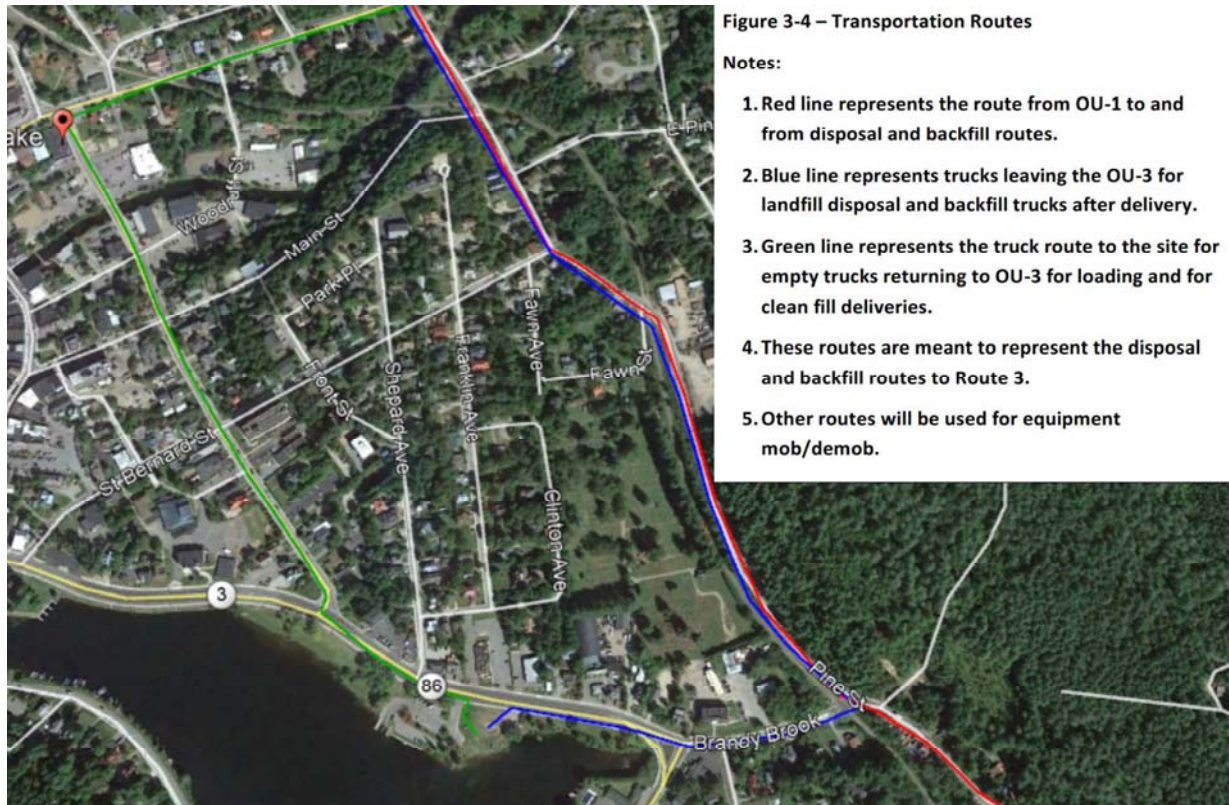
Traffic Control

Anticipated Traffic Flow Rates:

- Pontiac Bay: 14 trucks per day with contaminated material to landfill
- Brandy Brook: 8 trucks per day with contaminated material to landfill
8 trucks per day with clean material for restoration



Transportation Routes



Traffic Control Measures



- Flaggers will be used to direct traffic when work is taking place within the street or on a shoulder
- Signage, barrels, and barricades will be utilized to direct traffic and create a safe work zone
- To control flow of traffic at the boat launch, cones and temporary fencing will be established to direct recreational traffic flow
- Access will be maintained to residential properties during all phases of the project

Upcoming 2018 Activities

Contract is currently being processed for award.
Anticipated timeframes of upcoming activities are below

Spring 2018 – Mobilization and Pontiac Bay Area Preparation
Late Spring 2018 and Summer: Pontiac Bay Dredging
Summer 2018 – Brandy Brook Excavation Activities
Late Fall 2018 – Demobilize Equipment
Spring 2019 – Restoration

Role of the NYS DOH

- Work with NYSDEC to collect information needed to evaluate potential human exposures to environmental contamination
- Evaluate data that is collected during the investigation
- Make recommendations to address any potential exposures and evaluate the need for additional information
- Ensure that remedy selected is protective of public health



**Department
of Health**



**Department of
Environmental
Conservation**

What Is Exposure?

- Physical contact with a chemical or substance
 - Direct contact (touching)
 - Ingestion (eating/drinking)
 - Inhalation (breathing)
- One or more of these physical contacts must occur before a chemical has the *potential* to cause a health problem
- Exposure does not necessarily mean that health effects will occur



Department
of Health



Department of
Environmental
Conservation

Potential Exposure Pathways

Direct Contact

- Potentially complete exposure pathways include direct contact with soil and sediment associated with Brandy Brook and Pontiac Bay, that will be addressed by this remediation.

Ingestion

- Public water is supplied to the surrounding area that meets drinking water requirements.

Inhalation

- A Community Air Monitoring Plan and Odor Control Measures will be in place during remediation.

NO CONTACT = NO EXPOSURE



Department
of Health



Department of
Environmental
Conservation

Keep Informed

- Visit DEC's Region 5 Website:
<http://www.dec.ny.gov/chemical/37562.html>
- Receive Fact Sheets by Email:
Sign up for Essex County Listserv:
<http://www.dec.ny.gov/chemical/61092.html>
- Read Reports at Saranac Lake Free Library

109 Main Street
Saranac Lake, NY 12983
518-891-4190

Thank You

Sarah Saucier, NYSDEC

625 Broadway

Albany, New York 12233

sarah.saucier@dec.ny.gov

Wendy Kuehner, NYSDOH

NYSDOH

Empire State Plaza, Corning Tower

Rm #1787

Albany, NY 12237

BEEI@health.ny.gov

Connect with us:

Facebook: www.facebook.com/NYSDEC

Twitter: twitter.com/NYSDEC

Flickr: www.flickr.com/photos/nysdec

