

LEGEND:

- TEST PIT LOCATION
- FENCE
- RAILROAD
- PROPERTY BOUNDARY
- UTILITY POLE W/ GUY
- POWER POLE
- LIGHT POLE
- POST, SIGN
- HYDRANT
- FORMER MGP STRUCTURE
- MANHOLE

NOTE:

- BASE MAP BASED ON SURVEYS COMPLETED BY NYSEG ON DECEMBER 14, 2005 AND OCTOBER 2006. ELEVATIONS IN REFERENCE TO NGVD 1929, HORIZONTAL DATUM IS NAD 83 STATEPLANE, NEW YORK CENTRAL.
- ALL LOCATIONS ARE APPROXIMATE.
- PROPERTY BOUNDARIES WERE DIGITIZED FROM CITY OF GENEVA, ONTARIO COUNTY, NEW YORK TAX MAP [104.35], DATED MAY 1, 2008.

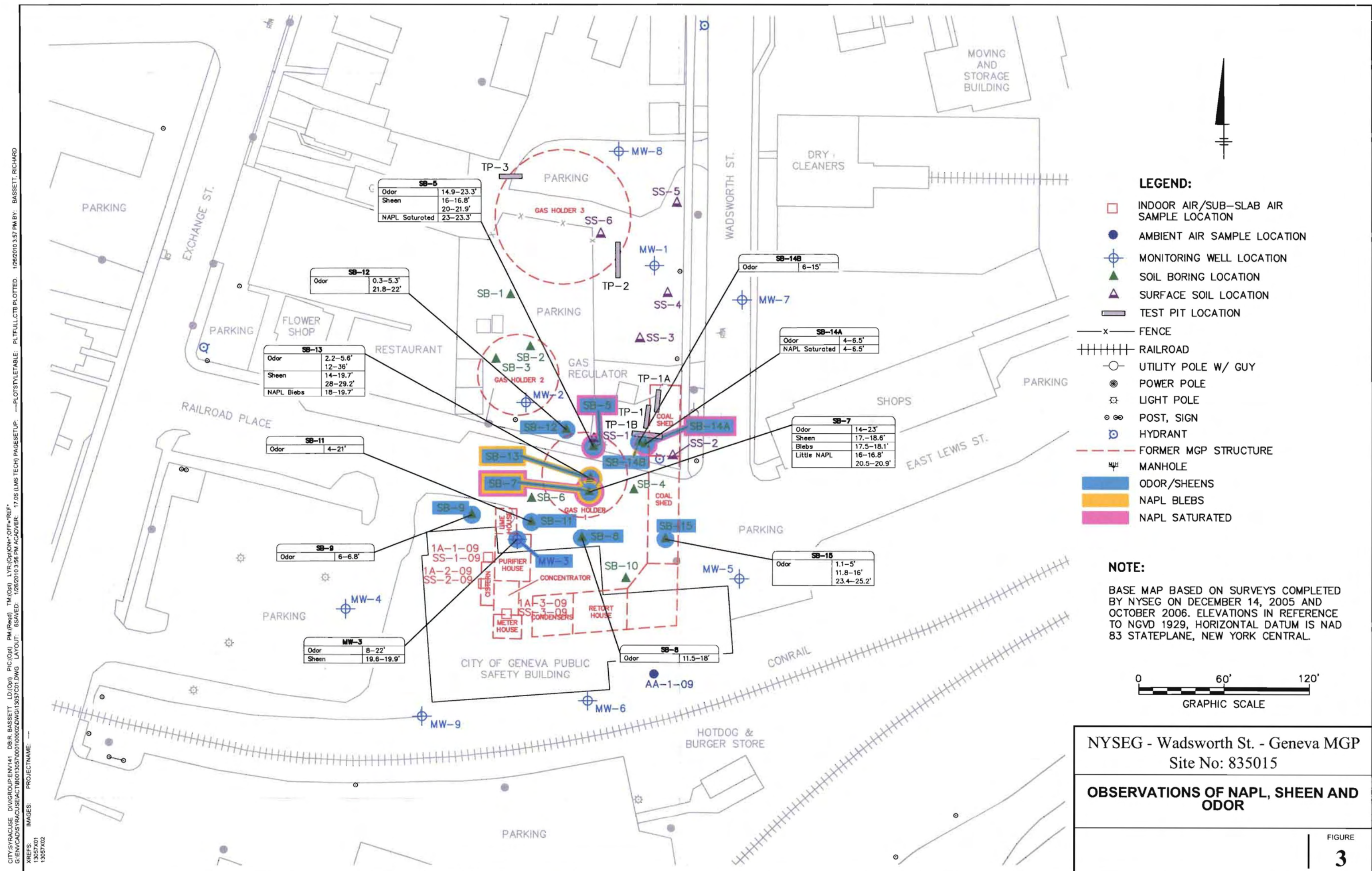


NYSEG - Wadsworth St. - Geneva MGP
Site No: 835015

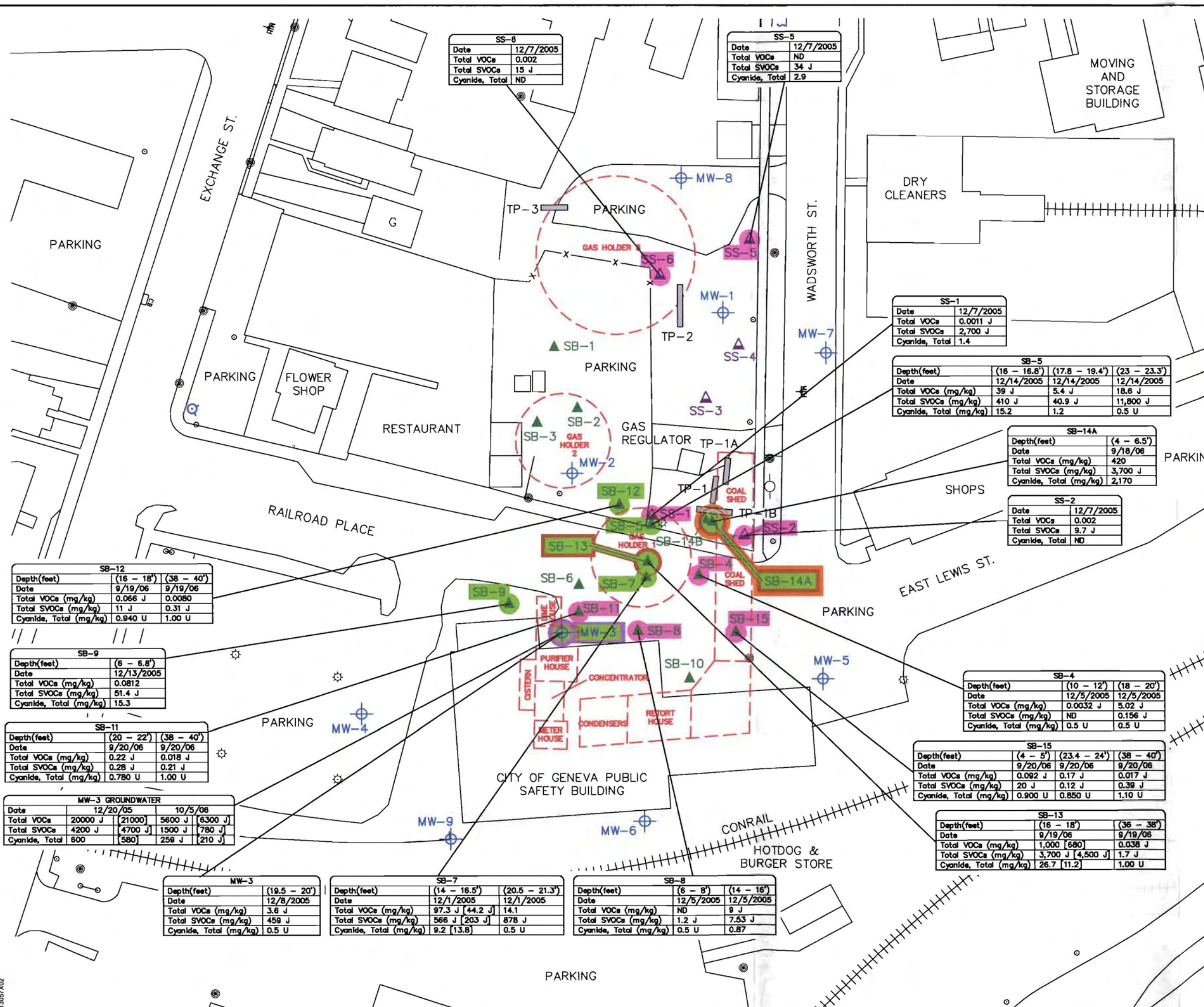
Historic Structures

FIGURE

2



CITY: Syracuse GROUP: ENV-141 DB: R BASSETT PM: A. FAZARANO LVR: ON=OFF=REF (FRZ
G:\ENV\CAD\SYRACUSE\ACT\B0013057\0001\00002\DWG\13057C02.DWG LAYOUT: 4\$AVED: 1/27/2010 8:59 AM ACADVER: 17.0\$ (LMS TECH) PAGES: 17 OF 17 PLOT: 1/27/2010 8:59 AM BY: POSENAUER, LISA
XREFS: IMAGES: PROJECTNAME: 13057X01 13057X02



LEGEND:

- MONITORING WELL LOCATION
- SOIL BORING LOCATION
- TEST PIT LOCATION
- FENCE
- RAILROAD
- UTILITY POLE W/ GUY
- POWER POLE
- LIGHT POLE
- POST, SIGN
- HYDRANT
- FORMER MGP STRUCTURE
- MANHOLE
- SURFACE SOIL SAMPLING LOCATION
- SOIL SAMPLE ONLY EXCEEDED PART 375 RESTRICTED USE SCOs (COMMERCIAL) FOR ONE OR MORE CONTAMINANTS
- SUBSURFACE SOIL SAMPLE EXCEEDED PART 375 RESTRICTED USE SCOs (COMMERCIAL) FOR ONE OR MORE SVOCs
- SUBSURFACE SOIL SAMPLE EXCEEDED PART 375 RESTRICTED USE SCOs (COMMERCIAL) FOR ONE OR MORE VOCs
- SUBSURFACE SOIL SAMPLE EXCEEDED PART 375 RESTRICTED USE SCOs (COMMERCIAL) FOR TOTAL CYANIDE
- GROUNDWATER SAMPLE EXCEEDS THE NYSDEC CLASS GA GROUNDWATER STANDARD OR GUIDANCE VALUE (TOGS 1,1,1,) FOR ONE OR MORE VOC/SVOC CONSTITUENTS AND/OR TOTAL CYANIDE.

ANALYTICAL NOTES:

GROUNDWATER UNITS GIVEN IN ug/L

U= THE COMPOUND WAS NOT DETECTED AT THE INDICATED CONCENTRATION.

ND= NOT DETECTED.

J= DATA INDICATE THE PRESENCE OF A COMPOUND THAT MEETS THE IDENTIFICATION CRITERIA. THE CONCENTRATION GIVEN IS AN APPROXIMATE VALUE.

[]= DUPLICATE SAMPLE.

NOTES:

- BASE MAP BASED ON SURVEYS COMPLETED BY NYSEG ON DECEMBER 14, 2005 AND OCTOBER 2006. ELEVATIONS IN REFERENCE TO NGVD 1929, HORIZONTAL DATUM IS NAD 83 STATEPLANE, NEW YORK CENTRAL.
- ALL LOCATIONS ARE APPROXIMATE.

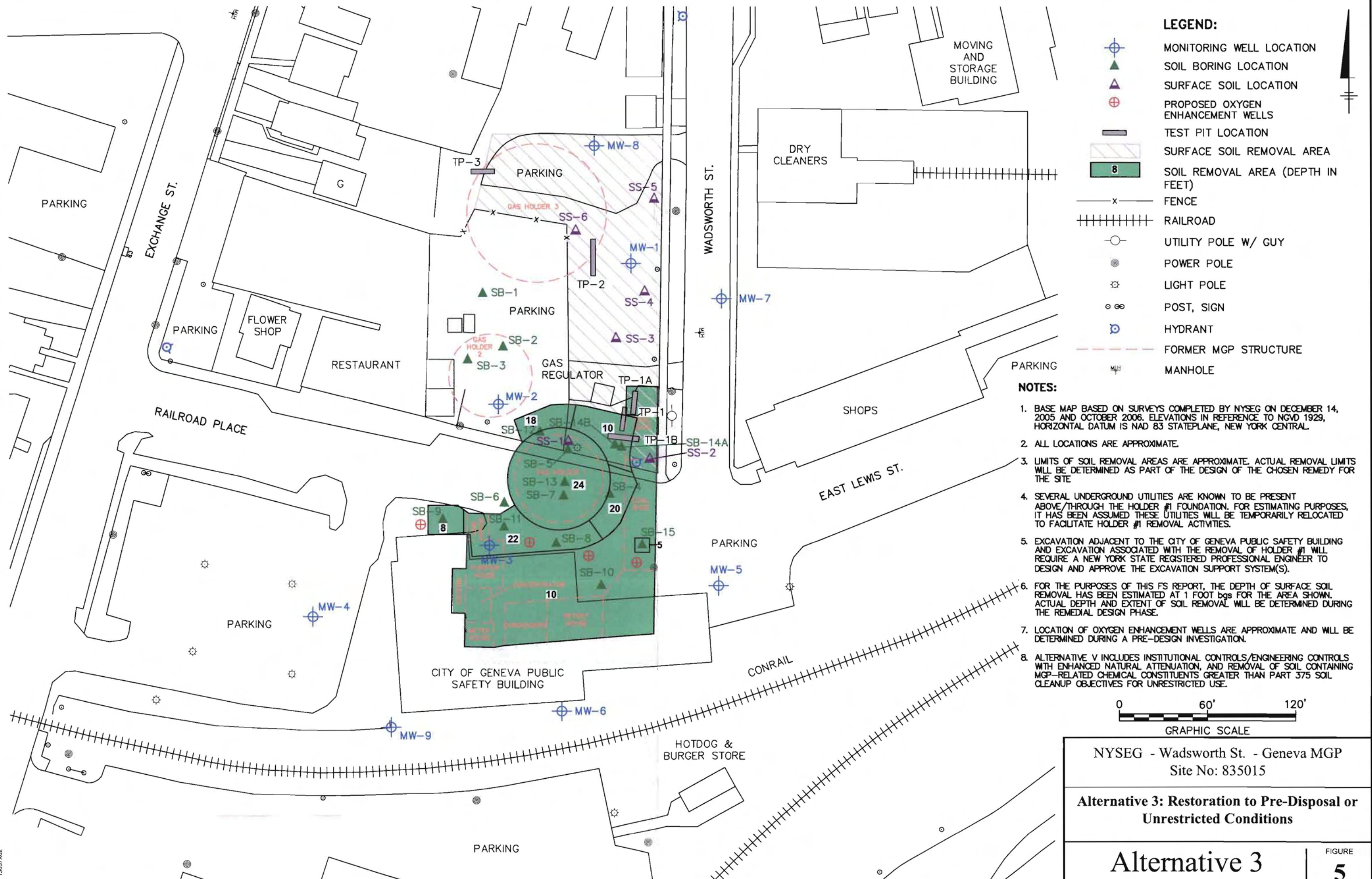
GRAPHIC SCALE
0 60' 120'

NYSEG - Wadsworth St. - Geneva MGP
Site No: 835015

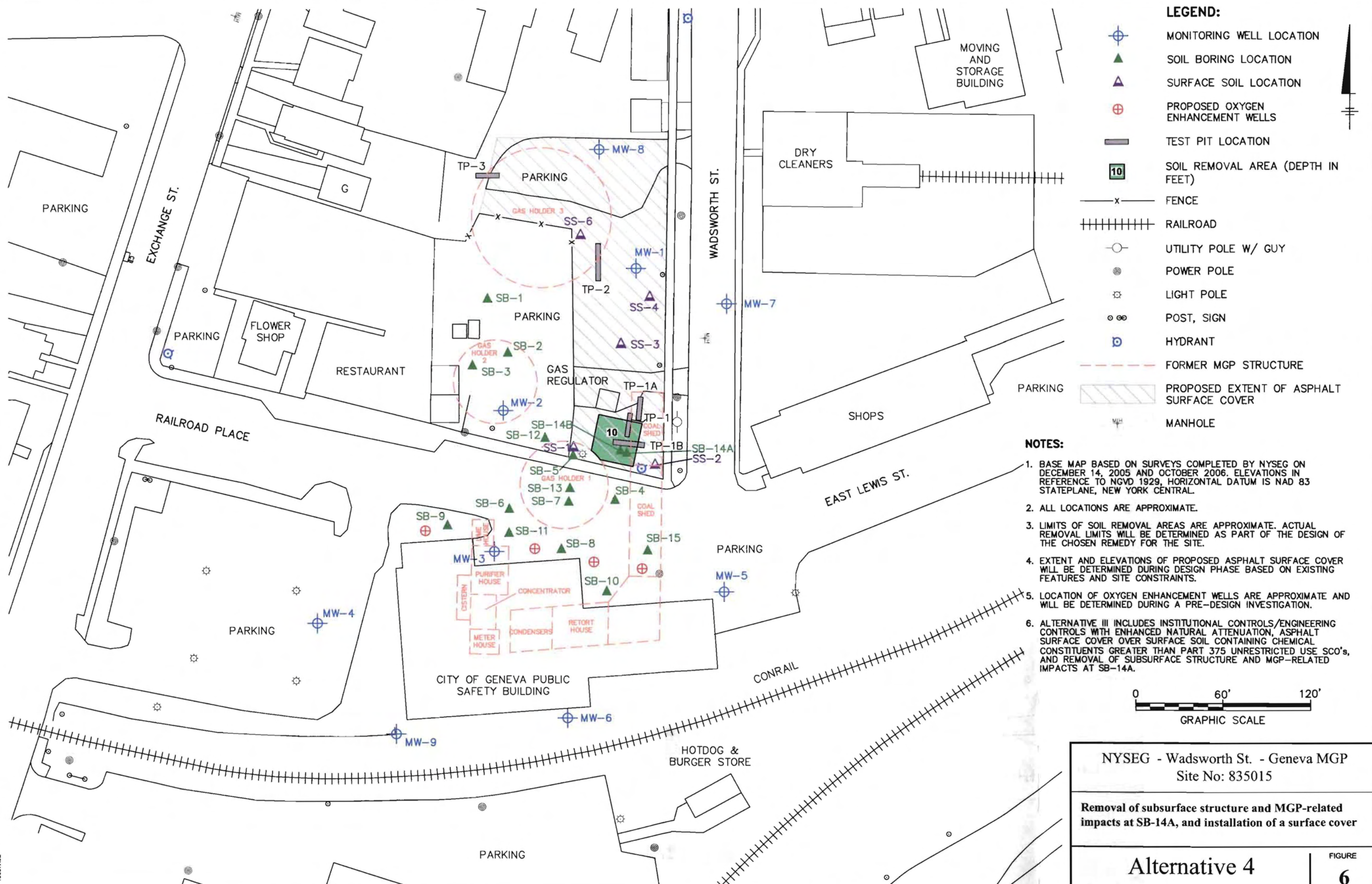
Groundwater and Soil Analytical Results

FIGURE 4

CITY: Syracuse GROUP: ENV-141 DB: AMS PGL A.Schilling PM: LVR ON=OFF=REF (FRZ G:\ENVCAD\SYRACUSE\ACT\13057\0001\00001\DWG\13057B01.DWG LAYOUT: 8 SAVED: 10/19/2009 9:45 AM ACADVER: 17.05 (LMS TECH) PAGES: 17.05 (LMS TECH) PLOTSETUP: --- PLOTSTYLETABLE: PLT\FULL.CTB PLOTTED: 10/19/2008 9:45 AM BY: SCHILLING, ADAM
XREFS: 13057X01 13057X02
IMAGES: PROJECTNAME: ---



CITY: Syracuse GROUP: ENV-141 DB: AMS PCL PM: A. FALZARANO LVR: ON*OFF=REF (FRZ
G:\CADD\ACT1800130570001\DWG\13057B04.DWG LAYOUT: 6 SAVED: 7/8/2008 11:45 AM ACADVER: 17.05 (LMS TECH) PLOTSETUP: --- PLOTSTYLETABLE: PLT\FULL.CTB PLOTTED: 7/15/2008 2:41 PM BY: JONES, WENDY
XREFS: PROJECTNAME: ---
IMAGES: 13057X01
13057X02



CITY: Syracuse GROUP: ENV-141 DB: AMS PGL PM: A. FALZARANO LVR: ONI-OFF-REF. (FRZ
G:\CADD\ACT\B001\30570001\DWG\13057B11.DWG LAYOUT: 7C SAVED: 7/15/2008 1:54 PM ACADVER: 17.05 (LMS TECH) PAGES: 17 OF 17 PLOT: 7/15/2008 1:54 PM BY: JONES, WENDY
XREFS: 13057X01 13057X02
IMAGES: PROJECTNAME: -

