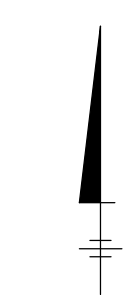
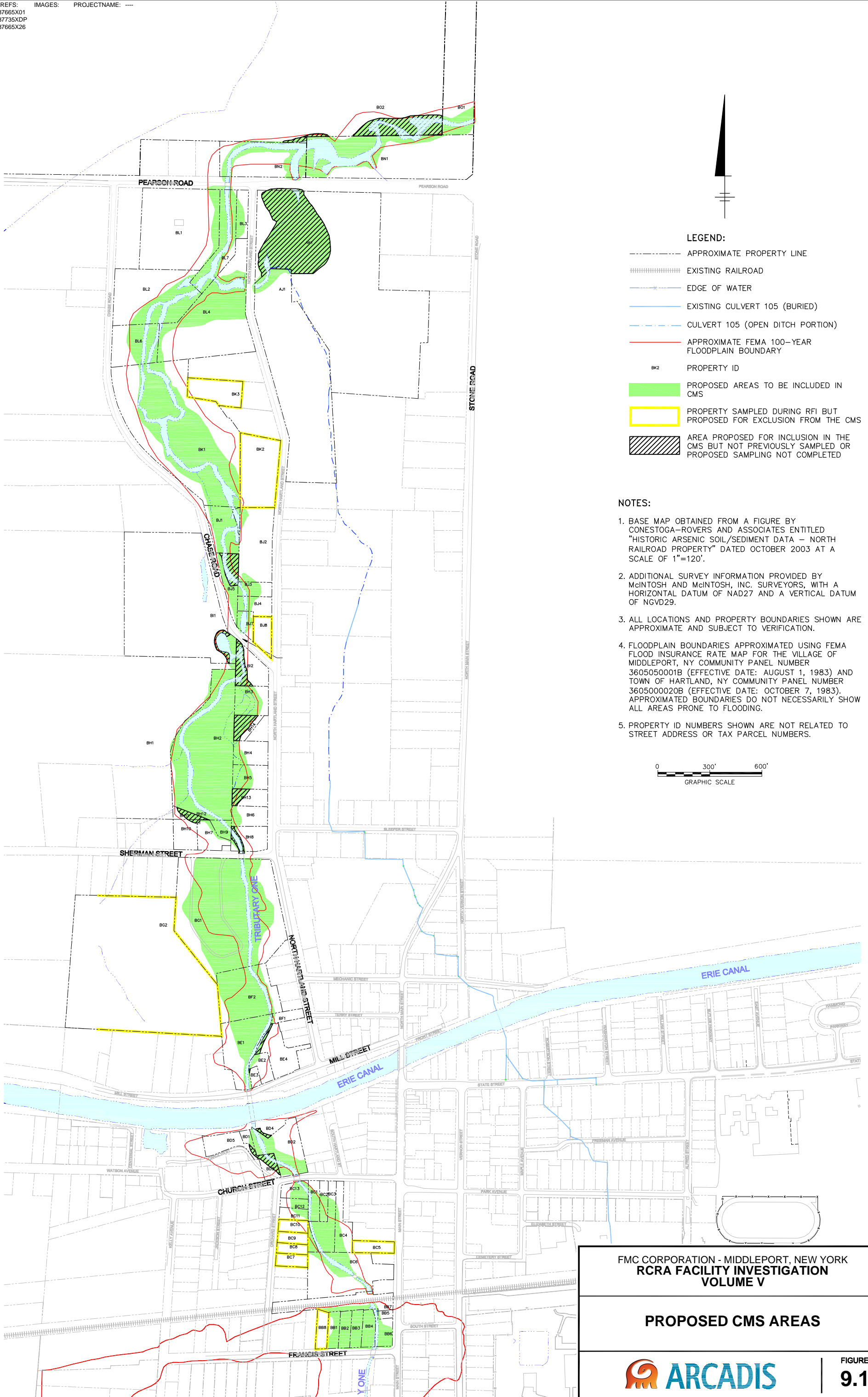
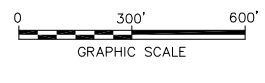


XREFS: IMAGES: PROJECTNAME: ---
 37865X01
 37735XDP
 37865X26



- LEGEND:**
- APPROXIMATE PROPERTY LINE
 - ===== EXISTING RAILROAD
 - *--- EDGE OF WATER
 - EXISTING CULVERT 105 (BURIED)
 - CULVERT 105 (OPEN DITCH PORTION)
 - APPROXIMATE FEMA 100-YEAR FLOODPLAIN BOUNDARY
 - BK2 PROPERTY ID
 - PROPOSED AREAS TO BE INCLUDED IN CMS
 - PROPERTY SAMPLED DURING RFI BUT PROPOSED FOR EXCLUSION FROM THE CMS
 - AREA PROPOSED FOR INCLUSION IN THE CMS BUT NOT PREVIOUSLY SAMPLED OR PROPOSED SAMPLING NOT COMPLETED

- NOTES:**
1. BASE MAP OBTAINED FROM A FIGURE BY CONESTOGA-ROVERS AND ASSOCIATES ENTITLED "HISTORIC ARSENIC SOIL/SEDIMENT DATA - NORTH RAILROAD PROPERTY" DATED OCTOBER 2003 AT A SCALE OF 1"=120'.
 2. ADDITIONAL SURVEY INFORMATION PROVIDED BY McINTOSH AND McINTOSH, INC. SURVEYORS, WITH A HORIZONTAL DATUM OF NAD27 AND A VERTICAL DATUM OF NGVD29.
 3. ALL LOCATIONS AND PROPERTY BOUNDARIES SHOWN ARE APPROXIMATE AND SUBJECT TO VERIFICATION.
 4. FLOODPLAIN BOUNDARIES APPROXIMATED USING FEMA FLOOD INSURANCE RATE MAP FOR THE VILLAGE OF MIDDLEPORT, NY COMMUNITY PANEL NUMBER 3605050001B (EFFECTIVE DATE: AUGUST 1, 1983) AND TOWN OF HARTLAND, NY COMMUNITY PANEL NUMBER 3605000020B (EFFECTIVE DATE: OCTOBER 7, 1983). APPROXIMATED BOUNDARIES DO NOT NECESSARILY SHOW ALL AREAS PRONE TO FLOODING.
 5. PROPERTY ID NUMBERS SHOWN ARE NOT RELATED TO STREET ADDRESS OR TAX PARCEL NUMBERS.

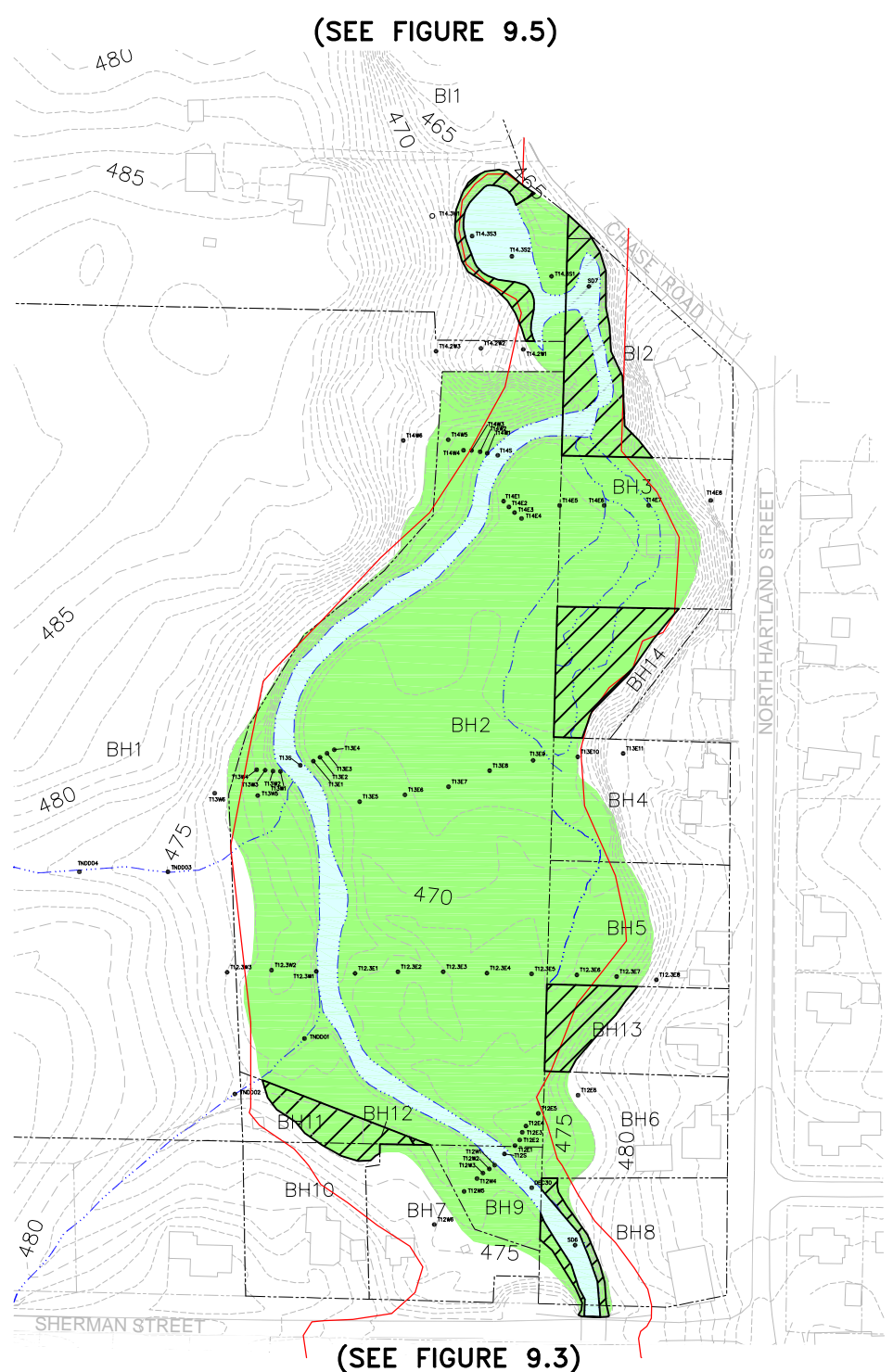


FMC CORPORATION - MIDDLEPORT, NEW YORK
 RCRA FACILITY INVESTIGATION
 VOLUME V

PROPOSED CMS AREAS

FIGURE
9.1

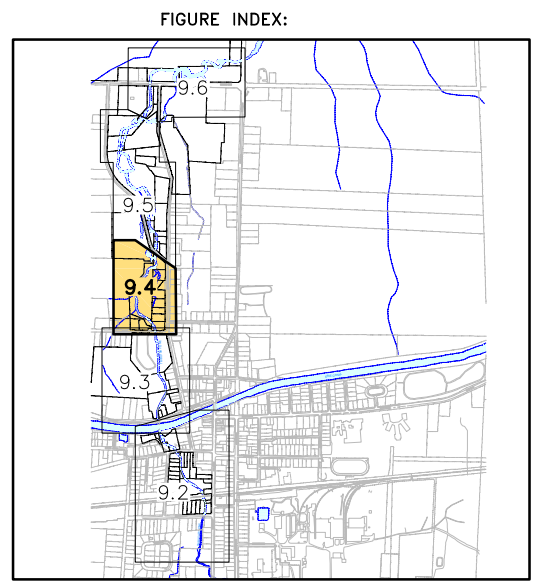
CITY: SYRACUSE, NY GROUP: ENVCAD DB: P. LISTER PM: M. S. COX TR: D. WRIGHT LYS: ON=OFF=REF (FRZ)
 G:\ENVCAD\SYRACUSE\ACT\B0037795\000\0005\DWG\GIVOLUME-V37795\026.DWG LAYOUT: 9.4SAVED: 11/18/2009 1:31 PM ACADVER: 17.05 (LMS TECH)\PAGESETUP: ---PLOTSTYLETABLE: PLT\FULL.CTB PLOTTED: 11/30/2009 12:58 PM BY: LISTER, PAUL
 XREFS: 37665X01 37735X01 37665X02 37665X26
 IMAGES: CATALOG: B0037685\000\XREF



SOIL AND SEDIMENT ARSENIC RESULTS (mg/kg):

Sample ID	Reach T3					
	0-3"	3-6"	6-12"	12-18"	18-24"	24-30"
Transect T12						
T12E1	722	253	189			
T12E2	217	476	428	459		
T12E3	286	313	302	129	188	
T12E4	239	459	344	420		
T12E5	400	491	462	68.7	74.5	51.2 (24-28)
T12E6	8.3	7.4	6.7	3.7	2.9	2.6
T12E7	193					
T12W1	221	396	282			
T12W2	203	363	462	361		
T12W3	230	310	344	361		
T12W4	54.2	134	58.5			
T12W5	180	187	13.8			
T12W6	11.6	10.7	4.7	1.7	1.9	3.3 (24-28)
Transect T12.3						
T12.3E1	36.9	40.4	701			
T12.3E2	160	118	12.4	6.9	6.4	18.9
T12.3E3	273	311	12.4	13.7	7.7	
T12.3E4	122	127	11.2	6.0	4.8 (18-20)	
T12.3E5	97	97	30.6 (6-10)			
T12.3E6	198	125	9.5	12.2		
T12.3E7	37.3	29.2	5.5	3.2	1.3	2.4
T12.3E8	13.8	12.9	11.3	8.9	6.5	3.8
T12.3W1	171	166	7.7	4.8	4.5	10.1
T12.3W2	122	196	46.6	7.0	5.8	2.9
T12.3W3	20.8	23.6	4.8	2.3	2.0	2.0
Transect T13						
T13E1	111	308	282	1,020	327	
T13E2	178	375	831	1,760		
T13E3	69.5	102	595	4,090	26.8	
T13E4	377	631	1,480	294	52.6	
T13E5	47.3	117	204	137	5.6	10.3
T13E6	300	208	251	7.2	10.1	7.9
T13E7	213	396	369	7.9	5.4	
T13E8	153	40.6	17.5	11.4	10.8	11.2
T13E9	211	606	422	32.9	27	6.7
T13E10	13.0	6.9	8.0	2.2		
T13E11	6.1	6.2	4.4	3.2	2.6	3.3
T13E12	23.8					
T13W1	72.2	113	46.5	14.3		
T13W2	204	183	13.4	6.4		
T13W3	229	249	99.1	4.5	3.0	
T13W4	51.6	44.5	45.6	27.1	18.1	
T13W5	62.5	48.0	6.7	3.5	1.7	1.8
T13W6	12.2	15.8 (3-5)	3.1	2.3	2.6	2.2
Transect T14						
T14E1	52.5	132	210	420	329	
T14E2	122	175	297	491	450	
T14E3	63.2	265	369	195	849	
T14E4	154	826	376	664	463	
T14E5	186	248	178			
T14E6	204	219	90.1 (6-10)			
T14E7	184	184	203			
T14E8	9.4	7.6	4.0	2.8	3.8	
T14E9	901	1,080	1,200	314		
T14W1	72.5	140	660	855	55.6	
T14W2	109	202	352	350	811	
T14W3	56.8	66.1	229	438		
T14W4	52	29.3	237	60.0		
T14W5	79.8	67.5	23.3	8.1	12.7	3.3
T14W6	6.1	6.4	3.4	1.8	1.8	1.3
T14W7	11.6					
Transect T14.2						
T14.2E1	8.4	9.1	11.1	4.3	2.1	1.8
T14.2E2	8.0					
T14.2E3	4.9	5.8	1.7	1.4	1.3	1.5
Transect T14.3						
T14.3E1	14.7	233	219	43.8	266 (18-23)	
T14.3E2	32.7	43.4	203	453	993 (18-22)	
T14.3E3	55.0	74.7	351	357	426	839
Other Sample Locations						
DE030	69.2					
S06	62.9					
S07	65.7					
TN0001	5.2	5.6	7.0	4.3 (12-15)		
TN0002	11.4	11.6	2.2	2.1		
TN0003	44.3	67.6	23.5	6.7		
TN0004	8.0	7.4	5.0	4.3		

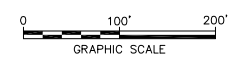
Notes for Tables:
 1. Sample depths are presented in inches.
 2. Numbers in parentheses represent the actual sample depth interval if different than the sample interval indicated for that column.
 3. Arsenic concentration in milligrams per kilogram (mg/kg), equivalent to parts-per-million (ppm).



LEGEND:

- TSE1 ● SAMPLE LOCATIONS
- 2004 PROPOSED SAMPLE LOCATION (ACCESS PERMISSION NOT GRANTED)
- SWAMP/WETLANDS
- APPROXIMATE FEMA 100-YEAR FLOODPLAIN BOUNDARY
- 475 — EDGE OF WATER
- 475 --- EXISTING ELEVATION CONTOUR LINE (CONTOUR INTERVAL 1 FOOT)
- PROPERTY LINE
- PROPERTY LINE OF PROPERTY INCLUDED IN THE RFI STUDY AREA AND/OR PROPOSED FOR INCLUSION IN THE CMS
- BH2 PROPERTY ID
- PROPOSED AREAS TO BE INCLUDED IN CMS
- ▨ AREA PROPOSED FOR INCLUSION IN THE CMS BUT PROPERTY NOT PREVIOUSLY SAMPLED OR PROPOSED SAMPLING NOT COMPLETED (BH8, BH10, BH11, BH12, BH13, BH14, B11, AND B12)

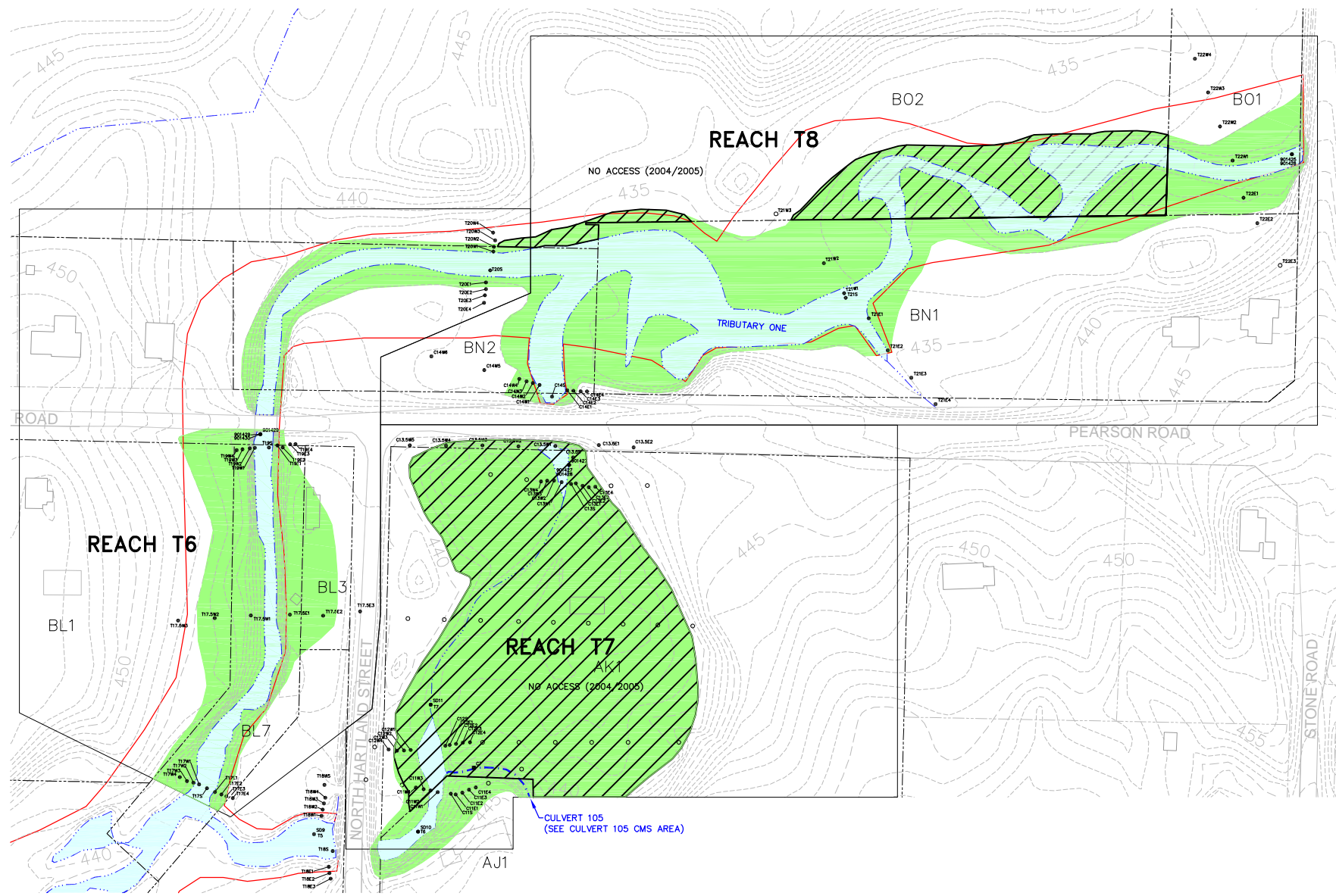
- GENERAL NOTES:**
- BASE MAP OBTAINED FROM A FIGURE BY CONESTOGA-ROVERS AND ASSOCIATES ENTITLED "HISTORIC ARSENIC SOIL/SEDIMENT DATA - NORTH RAILROAD PROPERTY" DATED OCTOBER 2003 AT A SCALE OF 1"=120'.
 - ADDITIONAL SURVEY INFORMATION PROVIDED BY McINTOSH AND McINTOSH, INC. SURVEYORS, WITH A HORIZONTAL DATUM OF NAD27 AND A VERTICAL DATUM OF NGVD29.
 - ALL LOCATIONS AND PROPERTY BOUNDARIES SHOWN ARE APPROXIMATE AND SUBJECT TO VERIFICATION.
 - FLOODPLAIN BOUNDARIES APPROXIMATED USING FEMA FLOOD INSURANCE RATE MAP FOR THE VILLAGE OF MIDDLEPORT, NY COMMUNITY PANEL NUMBER 3605050001B (EFFECTIVE DATE: AUGUST 1, 1983) AND TOWN OF HARTLAND, NY COMMUNITY PANEL NUMBER 3605000020B (EFFECTIVE DATE: OCTOBER 7, 1983). APPROXIMATED BOUNDARIES DO NOT NECESSARILY SHOW ALL AREAS PRONE TO FLOODING.
 - PROPERTY ID NUMBERS SHOWN ARE NOT RELATED TO STREET ADDRESS OR TAX PARCEL NUMBERS.



FMC CORPORATION - MIDDLEPORT, NEW YORK
 RCRA FACILITY INVESTIGATION
 VOLUME V

PROPOSED CMS AREA - REACH T3

FIGURE 9.4



(SEE FIGURE 9.5)

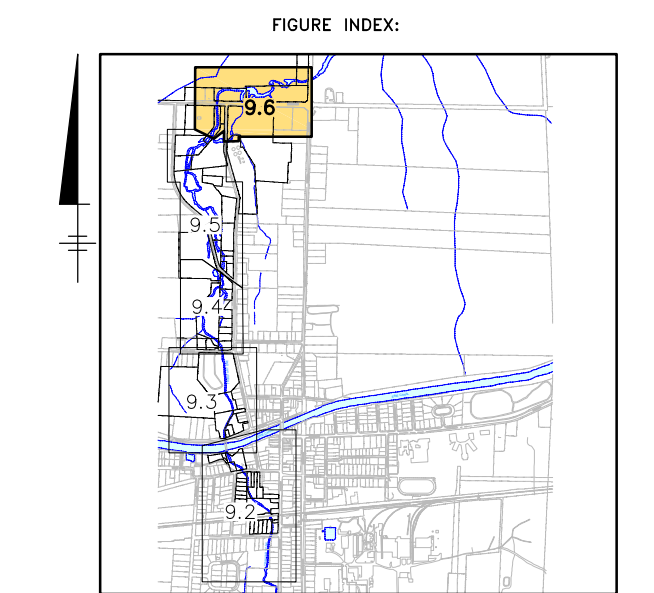
SOIL AND SEDIMENT ARSENIC RESULTS (mg/kg):

Sample ID	Reach T6				
	0-3"	3-6"	6-12"	12-18"	18-24" 24-30"
Transect T17					
T17E1	25.0	20.2	15.0	92.8	22.3
T17E2	13.8	7.0	3.2	2.7	20.1
T17E3	11.4	10.1	7.4	3.2	4.1
T17E4	4.8	4.9	3.1	2.9	1.8
T17E5	29.7				
T17E6	7.0	5.1	6.9	2.7	3.4
T17E7	10.1	6.6	3.8	1.9	1.8
T17E8	10.0	10.8	4.7	3.0	3.0
T17E9	12.1	9.0	3.2	3.8	2.2
Transect T17.5					
T17.5E1	74.9	73.5	6.8	4.0	3.0
T17.5E2	282	338	75.0	9.0	3.6
T17.5E3	2.3	2.2	19.9	20.2	6.8
T17.5E4	3.5	3.0	2.4	2.7	3.0
T17.5E5	60.3	56.5	39.6	14.0	3.0
T17.5E6	19.0	35.0	19.3	8.7	4.1
Transect T19					
T19E1	81.7	177	249	70.5	264
T19E2	31.0	29.3	34.6	33.8	23.2
T19E3	7.1	4.1	3.0	3.4	3.5
T19E4	6.3	8.5	8.3	3.9	1.1
T19E5	16.7	36.0	27.7	24.5	21.8
T19E6	3.0	3.2	3.4	2.7	3.9
T19E7	22.4	27.6	18.5	3.5	3.0
T19E8	35.5	25.4	9.7	4.2	3.0
Transect T20					
T20E1	33.8	5.2	3.3	3.1	2.8
T20E2	4.8	5.2	2.9	3.5	4.4
T20E3	7.0	5.3	4.5	6.3	5.9
T20E4	6.5	6.1	4.4	4.7	3.1
T20E5	19.9	16.8			
T20E6	13.3	18.9	25.6	17.5	4.1
T20E7	10.1	6.9	3.5	2.3	2.1
T20E8	6.2	6.9	3.8	1.7	1.2
T20E9	6.2	5.7	5.1	4.7	ND
Other Sample Locations					
90149/901430	94.4 (0-2)	348 (2-6)			

Sample ID	Reach T7										
	0-3"	3-6"	6-12"	12-18"	18-24" 24-30"	48-54"	54-60"	60-66"	66-72"	72-78"	78-84"
Transect C11											
C11E1	58.0	45.3	13.5	9.1	4.3						
C11E2	59.7	59.3	68.6	128							
C11E3	35.3	30.8	10.2	2.8							
C11E4	16.8	19.7	36.9	45.3							
C11E5	60.8										
C11E6	301	847	81.4	57.9							
C11E7	190	234	290	29.8	24.6						
C11E8	235	120	3.3	8.1							
C11E9	88.4	95.4	35.1	2.2							
Transect C12											
C12E1	47.8	238	62.2	4.8	3.1						
C12E2	75.6	123	20.0	22.7	11.7						
C12E3	297	250	84.1	6.2	9.8						
C12E4	70.2	173	124	17.2	4.9						
C12E5	23.0	17.9	8.2	4.0	4.9						
C12E6	76.3	25.9	5.2	4.2	1.8						
C12E7	14.8	14.4	3.1	2.8							
C12E8	12.3	12.9	4.2	4.8							
C12E9	18.4	7.5	4.8	3.5	2.9						
Transect C13											
C13E1	70.5	34.7	51.5	249	861						
C13E2	69.1	94.0	233	507	442						
C13E3	64.5	72.0	31.9	233	262						
C13E4	182	88.6	16.5	22.5	10.4						
C13E5	31.1	35.5	74.3								
C13E6	46.7	10.3	199	294	947						
C13E7	82.8	278	490	406	6.4						
C13E8	81.0	297	130	11.0	18.1						
C13E9	33.3	68.3	399	83.0	13.2						
Transect C13.5											
C13.5E1	6.1	6.0	4.3	3.2	2.7	2.0					
C13.5E2	4.8	4.5	2.7	2.3	2.3	2.2					
C13.5E3	44.7	171	172	151.8 (12-15)							
C13.5E4	122	289	1110	716	143	14.5					
C13.5E5	25.7	70.6	18.4	3.8	2.9	1.7 (24-27)					
C13.5E6	23.1	4.4	18.0	4.5	2.2						
C13.5E7	5.2	21.0	3.4	6.6	15.0						
C13.5E8	3.9	4.9	5.3	12.0	6.3	3.2	1.7	3.5	2.0	1.3	1.1
Other Sample Locations											
S018	38.8										
S011	30.1										
S6	48.3										
S7	184										
S02	35.7										
901427/901428	60.2 (0-2)	7.1 (2-6)									

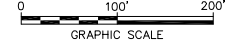
Notes for Tables:
 1. Sample depths are presented in inches.
 2. Numbers in parentheses represent the actual sample depth interval if different than the sample interval indicated for that column.
 3. Arsenic concentrations in milligrams per kilogram (mg/kg), equivalent to parts-per-million (ppm).
 4. ND = Not detected.

Sample ID	Reach T8									
	0-3"	3-6"	6-12"	12-18"	18-24" 24-30"	36-42"				
Transect C14										
C14E1	63.2	17.7	53.6	13.0						
C14E2	56.7	62.4	65.4	12.3	10.7					
C14E3	9.0	8.1	4.6	3.6	2.3					
C14E4	6.7	7.0	5.7	3.4	2.5					
C14E5	40.7	42.9								
C14E6	247	167	180	290	374					
C14E7	21.1	19.3	14.0	50.0	190					
C14E8	6.0	4.5	2.5	4.0	3.4					
C14E9	3.6	3.3	3.4	2.3	1.57					
C14E10	2.3	2.7	2.2	5.6	3.7	6.0				
C14E11	3.4	2.9	2.6	2.5	5.5	4.0				
Transect T21										
T21E1	23.4	45.1	81.7	165	26.9	4.8 (24-29)				
T21E2	6.6	6.3	1.7	1.7	1.8	1.4 (24-29)				
T21E3	8.4	9.0	6.1	3.3	1.0	1.8 (24-29)				
T21E4	4.0	3.5	3.9	2.9	3.2	1.3 (24-29)				
T21E5	15.7									
T21E6	20.2	48.4	59.8							
T21E7	42.8	85.3	9.9	3.2	4.1					
Transect T22										
T22E1	99.0	291	237	118	4.2	6.4 (24-29)				
T22E2	12.3	13.0	5.3	3.4	3.4	5.4				
T22E3	30.8	19.8	4.1	2.3	8.8	21.3 (24-29)				
T22E4	12.8	11.4	5.8	4.1	3.5	3.6				
T22E5	5.3	5.5	5.5	3.6	3.1	1.5				
T22E6	4.2	3.6	3.4	2.6	1.7	1.5				
Other Sample Locations										
901425/901426	35.8 (0-2)	38.3 (2-4)								



- LEGEND:**
- C14W5 ● SAMPLE LOCATIONS
 - 2004 PROPOSED SAMPLE LOCATION (ACCESS PERMISSION NOT GRANTED)
 - APPROXIMATE FEMA 100-YEAR FLOODPLAIN BOUNDARY
 - EDGE OF WATER
 - 445 — EXISTING ELEVATION CONTOUR LINE (CONTOUR INTERVAL 1 FOOT)
 - PROPERTY LINE
 - PROPERTY LINE OF PROPERTY INCLUDED IN THE RFI STUDY AREA AND/OR PROPOSED FOR INCLUSION IN THE CMS
 - AK1 PROPERTY ID
 - PROPOSED AREAS TO BE INCLUDED IN CMS
 - AREA PROPOSED FOR INCLUSION IN THE CMS BUT PROPERTY NOT PREVIOUSLY SAMPLED OR PROPOSED SAMPLING NOT COMPLETED (AK1 AND B02)

- GENERAL NOTES:**
1. BASE MAP OBTAINED FROM A FIGURE BY CONESTOGA-ROVERS AND ASSOCIATES ENTITLED "HISTORIC ARSENIC SOIL/SEDIMENT DATA - NORTH RAILROAD PROPERTY" DATED OCTOBER 2003 AT A SCALE OF 1"=120'.
 2. ADDITIONAL SURVEY INFORMATION PROVIDED BY McINTOSH AND McINTOSH, INC. SURVEYORS, WITH A HORIZONTAL DATUM OF NAD27 AND A VERTICAL DATUM OF NGVD29.
 3. ALL LOCATIONS AND PROPERTY BOUNDARIES SHOWN ARE APPROXIMATE AND SUBJECT TO VERIFICATION.
 4. FLOODPLAIN BOUNDARIES APPROXIMATED USING FEMA FLOOD INSURANCE RATE MAP FOR THE VILLAGE OF MIDDLEPORT, NY COMMUNITY PANEL NUMBER 3605050001B (EFFECTIVE DATE: AUGUST 1, 1983) AND TOWN OF HARTLAND, NY COMMUNITY PANEL NUMBER 3605000020B (EFFECTIVE DATE: OCTOBER 7, 1983). APPROXIMATED BOUNDARIES DO NOT NECESSARILY SHOW ALL AREAS PRONE TO FLOODING.
 5. PROPERTY ID NUMBERS SHOWN ARE NOT RELATED TO STREET ADDRESS OR TAX PARCEL NUMBERS.



FMC CORPORATION - MIDDLEPORT, NEW YORK
**RCRA FACILITY INVESTIGATION
 VOLUME V**

**PROPOSED CMS AREA -
 REACHES T6, T7, AND T8**

**FIGURE
 9.6**