



FACT SHEET

Brownfield Cleanup Program

*Receive site fact sheets by *email*. See **For More Information** to learn how.

Site Name: Former Roblin Steel Site (Dunkirk)

November 2012

DEC Site #: B00173

Site Address: 320 South Roberts Road; Dunkirk, NY 14048

Roblin Steel Update: Cleanup Requirements Achieved!



Historic Uses: Artist rendering of inside of Roblin Steel building when operated by ALCO



Before remediation: Northwest side of building



After remediation: ready for development

Former Roblin Steel By the Numbers:

Brownfield Numbers:

- 12** acres – area of inactive industrial park
- 20** – # of years site was abandoned
- 583.26** tons – non-hazardous contaminated subsurface soil/fill excavated from site
- 5,772.76** tons – surface soil/fill, debris/fill piles and wood block flooring excavated from site
- 19,000** cubic yards – soil cover imported into site
- 88,500** SF – area of vacant building demolished on site
- 126,000** pounds – granular iron deposited into subsurface to address groundwater contamination

Cleaned Facility Numbers:

- 0.5** tons – of PCB contaminated equipment
- 20** cubic yards – of K061 debris
- 55** gallons – of pesticide
- 55** gallons – of Carbon Disulfide
- 110** gallons – of acids
- 165** gallons – of flammable liquid
- 275** gallons – of asbestos (solid)
- 330** gallons – of PCB oil
- 688** empty drums
- 1,865** gallons – of K061 oils
- 3,544** gallons – of K061 liquids

New York State Department of Environmental Conservation (DEC) has determined that the cleanup requirements to address contamination related to Former Roblin Steel Site (Dunkirk) (“site”) located at 320 South Roberts Road, Dunkirk, Chautauqua County under New York State's Environmental Restoration Program have been or will be met. Please see **Site Location** for the map.

DEC has issued a Certificate of Completion regarding the site. A copy of the Certificate of Completion is available at the locations identified below under **Where to Find Information**.

The cleanup activities were performed with oversight provided by DEC.

Institutional and Engineering Controls

Institutional controls and engineering controls generally are designed to reduce or eliminate exposure to contaminants of concern. An *institutional control* is a non-physical restriction on use of the site, such as a deed restriction, when contamination left over after the cleanup action makes the site suitable for some, but not all uses. An *engineering control* is a physical barrier or method to manage contamination such as a cap or vapor barrier.

The following institutional controls have been put in place on the site:

- Environmental Easement
- Soil Management Plan
- Local Groundwater Restriction
- IC/EC Plan
- Site Management Plan



Before remediation: Northeast corner of Roblin site



During remediation: Southwest corner after building demolition

- Monitoring Plan
- Land use Restriction

The following engineering controls have been put in place on the site:

- Cover System with demarcation layer

Next Steps

DEC issued the Certificate of Completion based on review and approval of a Final Engineering Report. The Final Engineering Report includes:

- 1) A description of the cleanup activities completed;
- 2) Certification that cleanup requirements have been or will be achieved for the site;
- 3) a description of any institutional/engineering controls to be used; and
- 4) A certification that a site management plan for any engineering controls used at the site has been approved by DEC.

A Certificate of Completion may be modified or revoked if, for example, there is a failure to comply with the terms of the order or agreement with DEC.

Background

Site Location

The site's address is 320 South Roberts Road (County Road 136) in the City of Dunkirk. The site is actually located approximately 500 feet northeast of the road.

The 12-acre site is roughly triangular in shape and bounded to north and east by an active rail yard and railroad tracks respectively. The site is also bounded by two other brownfield sites; the former Alumax Extrusions facility (site #V00589) to the south and to the west the Edgewood Warehouse site (#E907032). Lake Erie is located approximately 4,000 feet to the northwest.

Historic Uses

The site was initially developed as part of a larger industrial complex operated by the American Locomotive Company in the early 1900s for the manufacture of locomotives. Operations were later converted to the manufacture of process equipment (e.g. heat exchangers, pressure vessels, steel pipe, fittings and conduits). Roblin Steel acquired the property and operated a steel reclamation business until the 1980's; scrap steel was forged in electric arc furnaces into steel rods. The facility included dust collection baghouses, mills, a compressor house, an electrical

Former Roblin Steel Site Timeline:

1910

Site developed, original contamination

1990's

Site abandoned

2002

August: Site Investigation/ Remedial Alternatives Report (SI/RAR) Work Plan

2003

May: SI/RAR

2005

March: Record of Decision (ROD)

2006

February: Remedial Action Work Plan (RAWP)

November: Phase I Remedial Activities

2010

March: Phase II Remedial Activities

substation and a variety of other process equipment. Prior site uses and operations that appear to have led to the site contamination include metal plating, machining, the use of metal cleaning solvents and the storage of fuel oil.

Previous investigations identified soil and groundwater contamination (including chlorinated solvents, heavy metals petroleum and PCBs) and asbestos containing materials in the building. An EPA removal action was completed in 1994 to remove over 700 drums of hazardous waste, piles of hazardous emission control dust, and other hazardous materials. A second EPA removal action was completed in 2004 that included the delineation, excavation and off-site disposal of PCB-impacted concrete and surface soils.

In 2001, Chautauqua County took ownership of the property and applied to New York State for funding to further investigate and remediate the site under the Environmental Restoration Program.

Site Features

As part of the completed site remediation, all of the buildings on site were demolished and the entire site covered with a one foot layer of clean soil; the site remains vacant. Vegetation on site is limited to grass. Hyde Creek passes within approximately one hundred feet of the site's northeastern corner.

Current Zoning

The site is located in an area zoned for industrial use. Land use in the site vicinity is characterized by a mixture of commercial, industrial and residential uses.

Residential properties are situated to the northwest and south of the site, beyond the adjoining properties; the nearest home lies approximately 200 feet from the site's southern corner. Mixed commercial and light industrial properties are located further to the north and west of the site, while an undeveloped wooded area to the east.

Additional Details

Additional site details, including environmental and health assessment summaries, are available on DEC's website at: <http://www.dec.ny.gov/chemical/63354.html> and <http://www.dec.ny.gov/cfm/external/haz/details.cfm?pageid=3&progno=B00173>

Where to Find Information

Project documents are available at the following locations to help the public stay informed. For more information about the BCP, visit: <http://www.dec.ny.gov/chemical/8450.html>.

City of Dunkirk

Attn: Dunkirk City Hall
342 Central Avenue
Dunkirk, NY 14048
(716) 366-0452



During remediation: Concrete crushing during Phase II remedial activities



During remediation: Southwest side of building during demolition

Who to Contact

Comments and questions are always welcome and should be directed as follows:

Project Related Questions:

David Locey
NYS DEC, DER
270 Michigan Ave
Buffalo, NY 14203-2915
716-851-7220
dplocey@gw.dec.state.ny.us

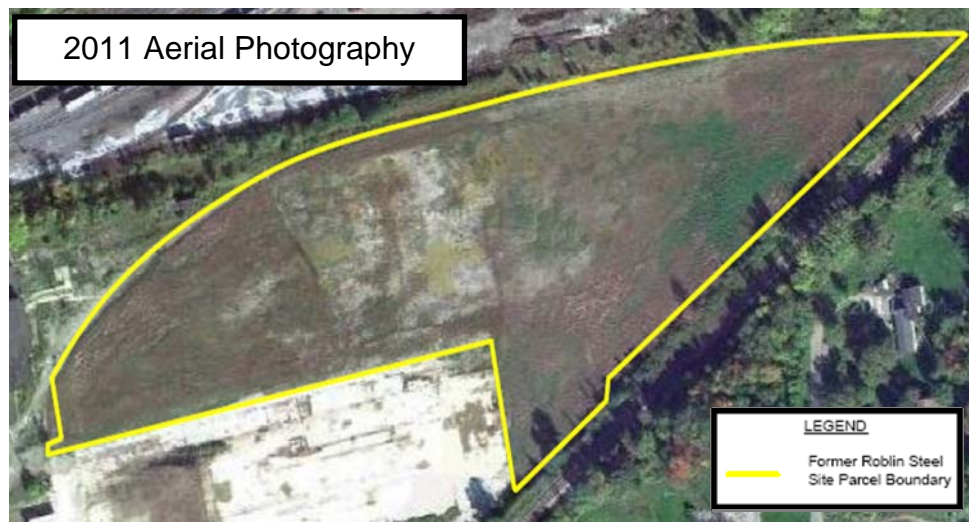
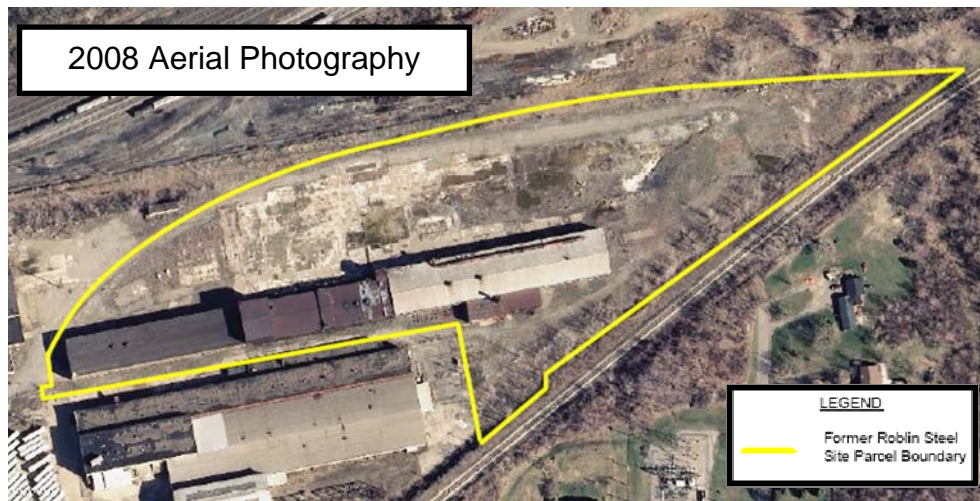
Site-Related Health Questions:

Matthew Forcucci
NYS DOH
584 Delaware Ave
Buffalo, NY 14202-1295
716-847-4501
beei@health.state.ny.us

Site-Development Questions:

James Manzella
TVGA Consultants
620 Main Street
Buffalo, NY 14202
716-849-8739
jmanzella@tvga.com

Site Location



For More Information

We encourage you to share this fact sheet with neighbors and tenants, and/or post this fact sheet in a prominent area of your building for others to see.



***Receive Site Fact Sheets by Email**

Have site information such as this fact sheet sent right to your email inbox. DEC invites you to sign up with one or more contaminated sites county email listservs available at the following web page: <http://www.dec.ny.gov/chemical/61092.html>. It's *quick*, it's *free*, and it will help keep you *better informed*.

As a listserv member, you will periodically receive site-related information/announcements for all contaminated sites in the county(ies) you select. You may continue also to receive paper copies of site information for a time after you sign up with a county listserv, until the transition to electronic distribution is complete.

Note: Please disregard if you already have signed up and received this fact sheet electronically.