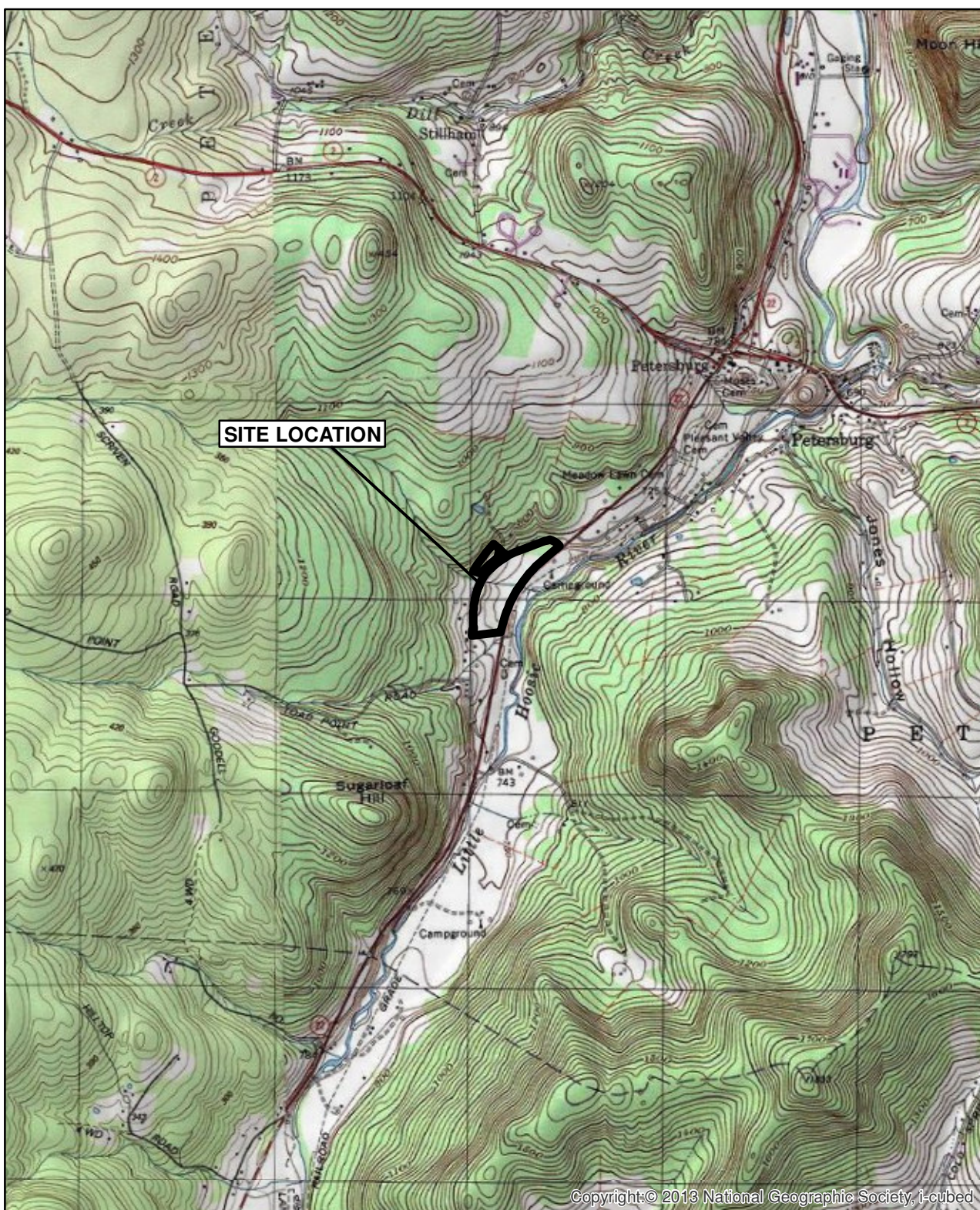


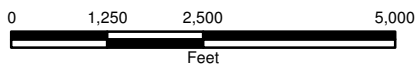
PLOTDATE: 12/14/16 3:05:07 PM Gardheme

I:\Sichenzia-Ross\27400\63716.Rt-Fs-Work-Plan\Docs\Reports\Rt-Fs-Work-Plan\Figures\Figure 1 Site Location.mxd



PETERSBURG, NEW YORK

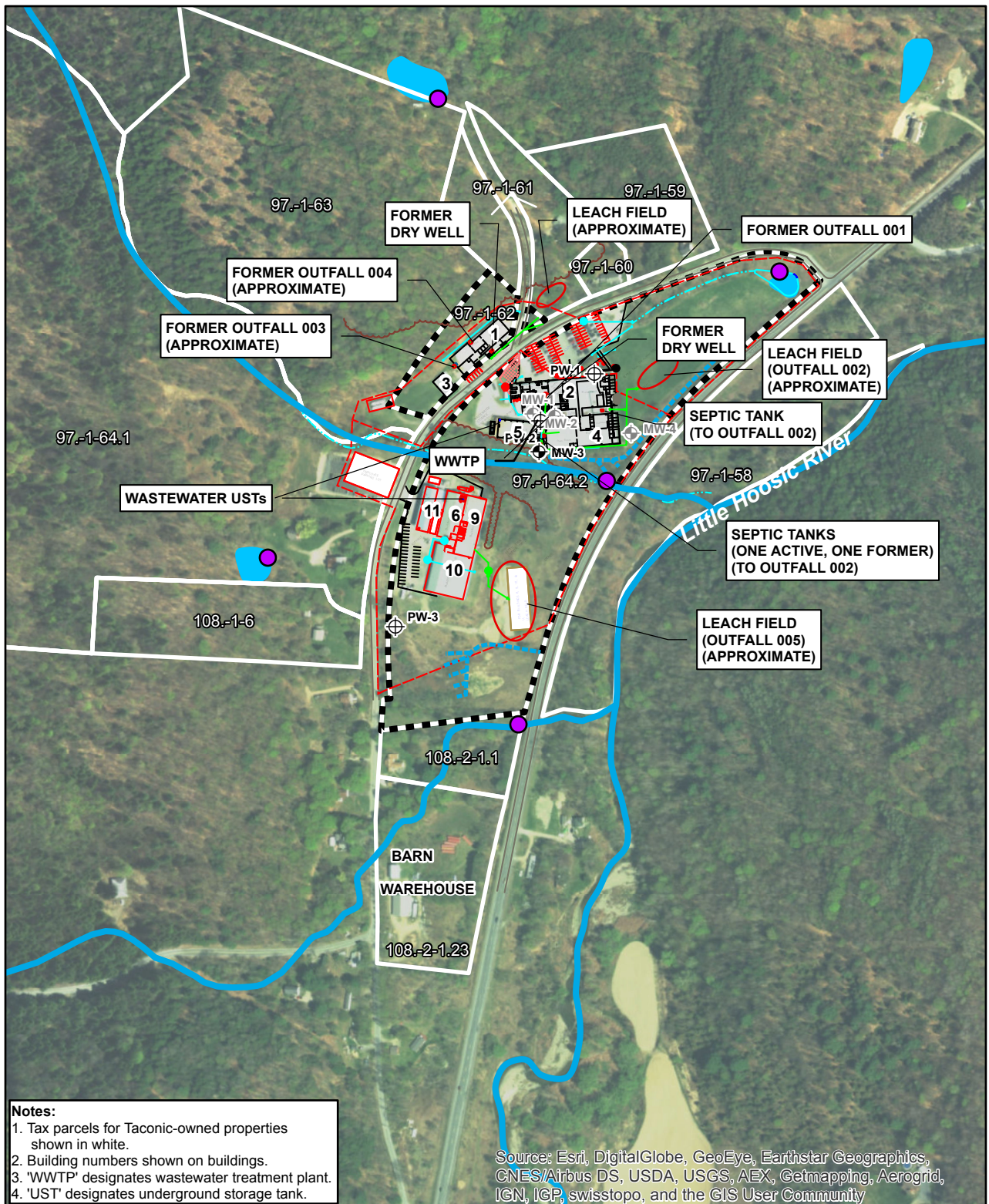
SITE LOCATION





PLOTDATE: 12/14/16 10:56:19 AM Gardneme

I:\Schenzia-Ross.27400\63716\_Rt-Fs-Work-Plan\Docs\Reports\RIFS Work Plan\Figures\Figure 2 Site Plan & Site Features.mxd



## LEGEND

- Site Outline
- Stream (Dashed where Intermittent)
- Pond
- Production Well
- Surface Water Sample Location (Sampled 12/9/16)
- Existing Overburden Monitoring Well
- Abandoned Overburden Monitoring Well

PETERSBURG, NEW YORK

## SITE PLAN AND SITE FEATURES

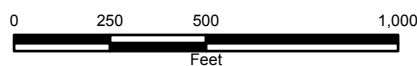
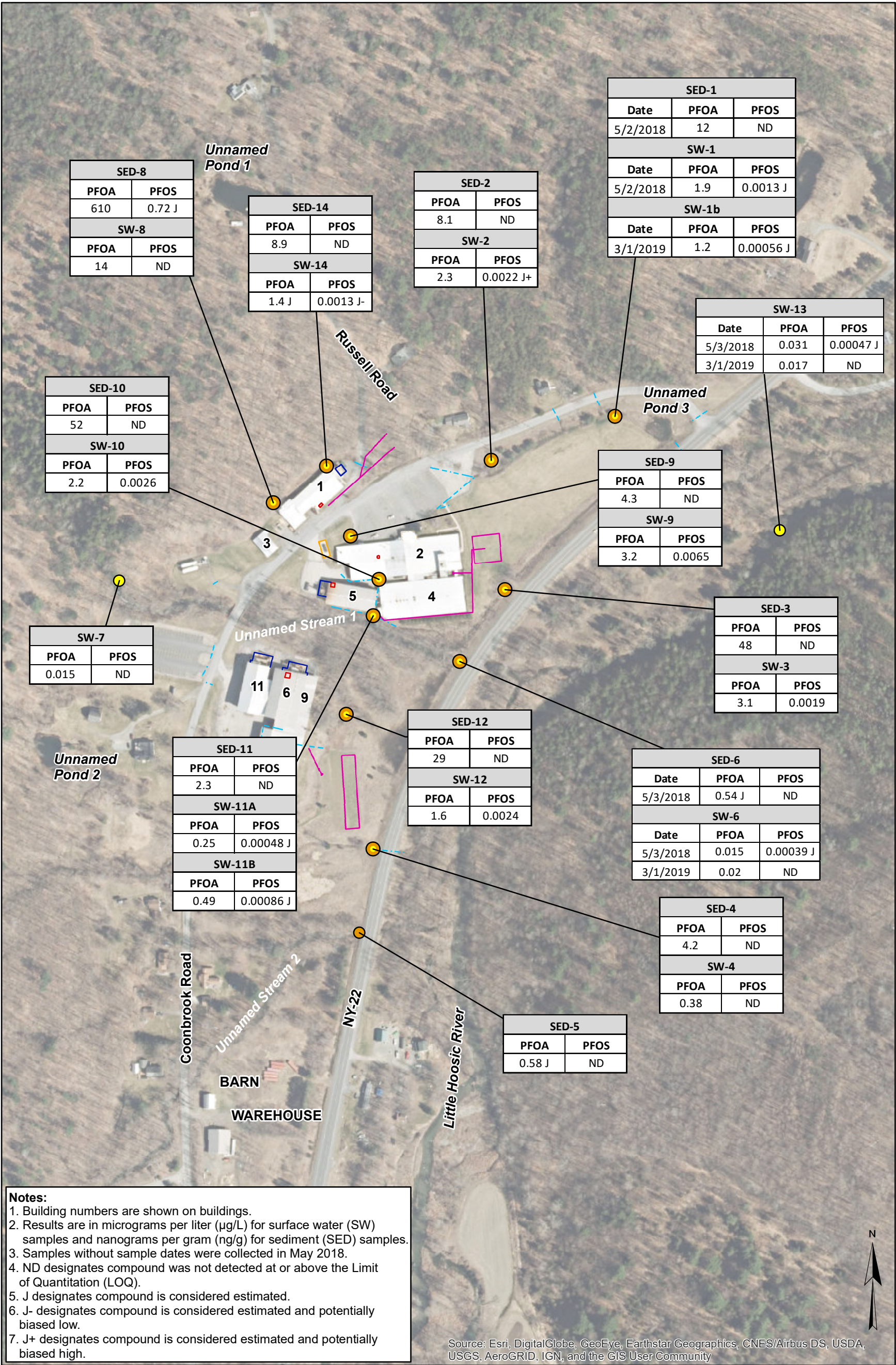




FIGURE 3



LEGEND

- Sediment
- Surface Water
- Surface Water and Sediment
- Sludge Roll-Off Storage Pad
- Air Pollution Control System
- UST and Drywell
- Storm Water
- Sanitary Lines and Leach Fields

PETERSBURGH, NEW YORK

PFOA/PFOS RESULTS  
SURFACE WATER AND SEDIMENT  
MAY 2018 AND MARCH 2019

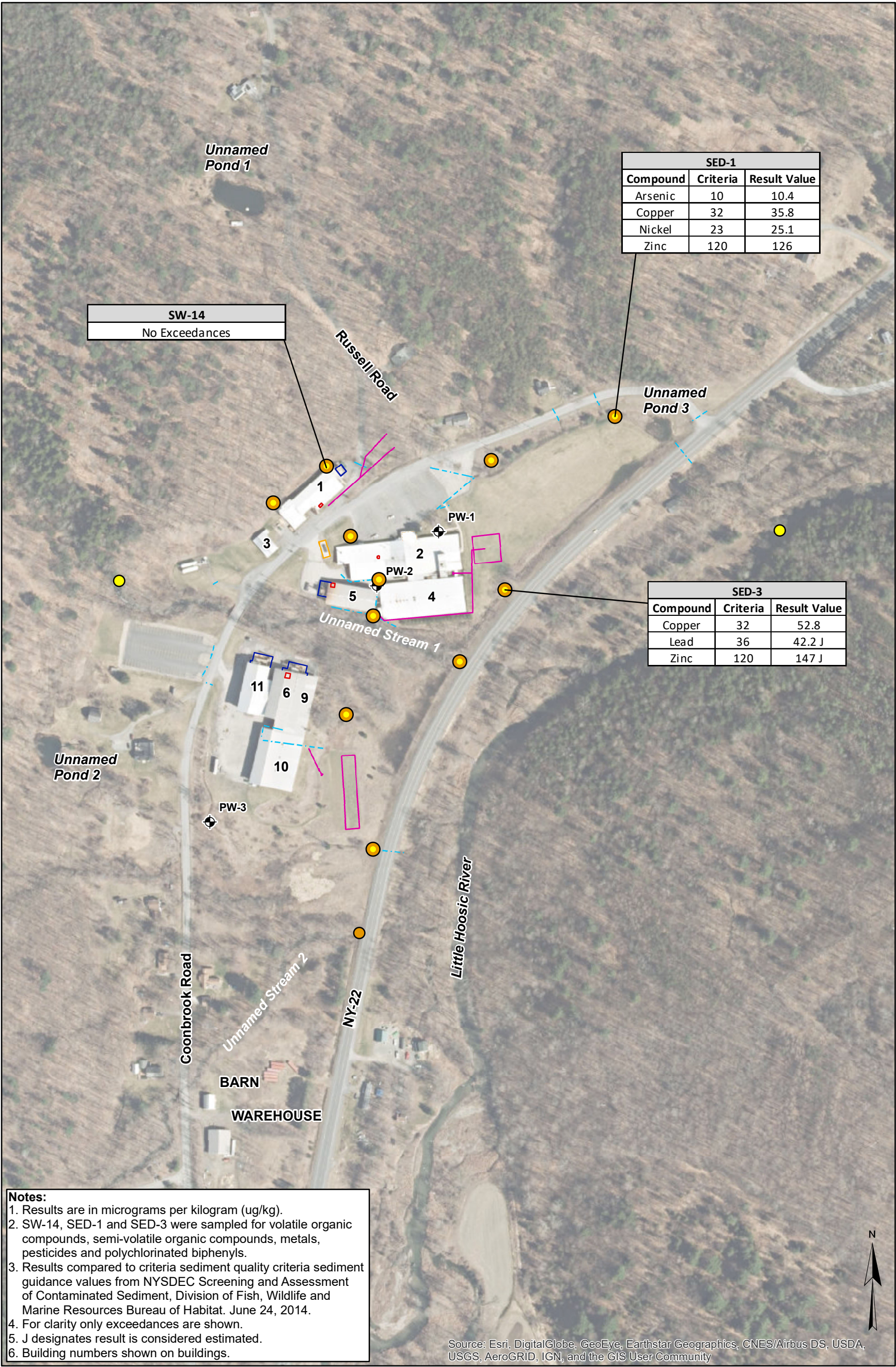


70557  
OCTOBER 2019

O'BRIEN & GERE ENGINEERS, INC.



FIGURE 4



LEGEND

- Sediment
- Surface Water
- Surface Water and Sediment
- Sludge Roll-Off Storage Pad
- Air Pollution Control System
- UST and Drywell
- Storm Water
- Sanitary Lines and Leach Fields
- Well Location



PETERSBURGH, NEW YORK

TCL/TAL RESULTS  
SURFACE WATER AND SEDIMENT  
MAY 2018

70557  
FEBRUARY 2019



O'BRIEN & GERE ENGINEERS, INC.

This document was developed in color. Reproduction in B/W may not represent the data as intended.



FIGURE 5

