



CORNING & PAINTED POST FLOOD DAMAGE REDUCTION PROJECT



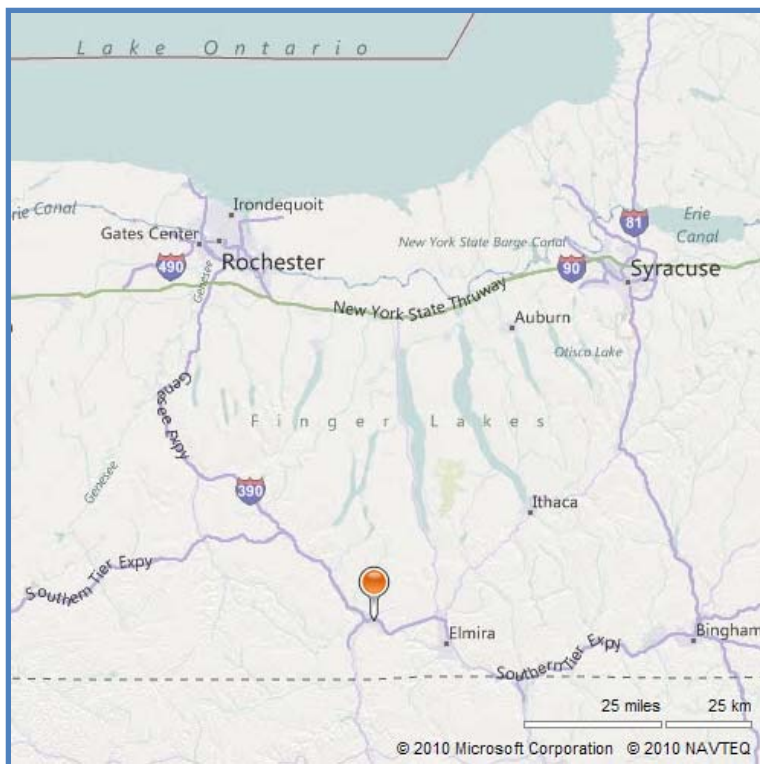
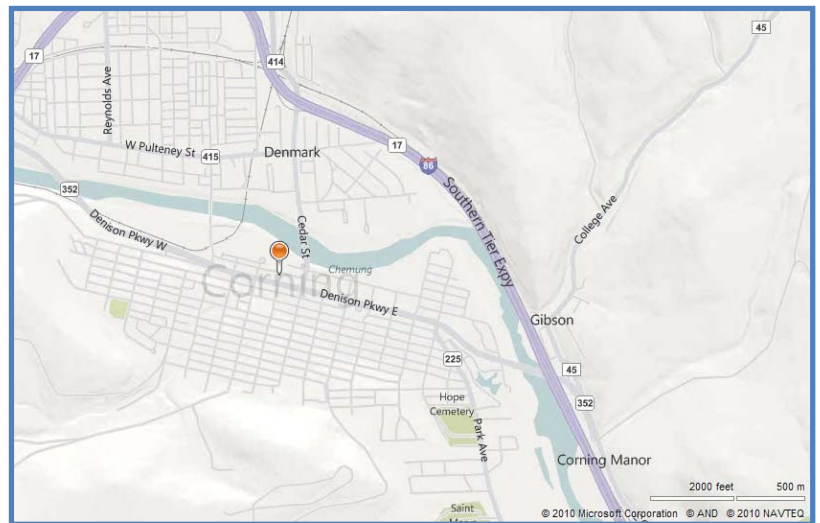
*Department of
Environmental Conservation*

Operated and Maintained by: New York State

*Region 8 Counties: Chemung,
Genesee, Livingston, Monroe,
Ontario, Orleans, Schuyler,
Seneca, Steuben, Wayne, Yates*

PROJECT LOCATION

Corning is located in Steuben County, in southern New York, on both banks of the Chemung River 45 miles above its junction with the Susquehanna River.



Painted Post is located on the left, or north bank of the Cohocton River at its junction with the Tioga River. Several minor tributaries join the main stream in this area. Post Creek enters the Chemung River from the north along the east side of Corning, New York. Monkey Run enters the Chemung River from the south after flowing through Corning. Cutler Creek with its tributary, Bill Smith Creek enters the Chemung River from the north along the west side of Corning. Hodgman Creek flows along the western side of Painted Post to enter the Cohocton River from the north, or left bank.

PROJECT DESCRIPTION

The protective works extend intermittently from Hodgman Creek above Painted Post to South Corning. They consist of a relocation of the Cohocton River channel, levees, and flood walls with appurtenant drainage structures on the Cohocton and Chemung Rivers; and Hodgman, Cutler, and Post Creeks. The realignment of the Cutler Creek channel south of Hornby Road, and the realignment and confinement of Monkey Run within a concrete flume and conduit within the city limits of Corning was performed, with a pump station near the mouth of Cutler Creek.

These improvements consist of the following major units:

- Channel Improvement:
 - Riverside on Cutler Creek 3,500 feet
 - Painted Post on the Cohocton River 6,000 feet
- Levee:
 - South Corning 5,100 feet
 - Corning 28,800 feet (a)
 - Riverside 9,000 feet
 - Painted Post 9,700 feet (b)
 - Cohocton River (right bank) 5,000 feet (c)
 - Corning (Monkey Run) 110 feet
- Flood Wall:
 - Corning 3,300 feet
- Conduit or Pressure Culvert
 - Riverside on Cutler Creek 420 feet
 - Corning on Monkey Run 2,320 feet
- Flume:
 - Corning on Monkey Run 2,010 feet
- Pumping Station:
 - Corning on Cutler Creek One, with 3 pumps

NOTES:

- (a) Includes 3,800 feet built by local interests.
- (b) Includes 4,300 feet built by the New York State Department of Transportation.
- (c) Built by the New York State Department of Transportation

AUTHORIZATION

By enactment of the Flood Control Act approved June 22nd, 1936 (Public Law No. 738, 74th Congress, H.R. 8455), Congress authorized “construction of detention reservoirs and related flood-control works for protection of Binghamton, Hornell, Corning, and other towns in New York and Pennsylvania in accordance with plans approved by the Chief of Engineers...” The flood protective works at Corning and Painted Post, New York, were constructed under the authority cited above as amended by the Flood Control Act approved June 28th, 1938 (Public Law No. 761, 75th Congress, third session, H.R. 10618).

A further modification by the Flood Control Act approved May 17th, 1950 (Public Law No. 516, 81st Congress, second session, H.R. 5472) authorized flood protection on Monkey Run at Corning, New York. All these works constitute a part of the comprehensive plan for flood protection in the upper Susquehanna River in southern New York and eastern Pennsylvania. The general scope of these projects is described in House Document No. 702, 77th Congress, second session and House Document No. 305, 81st Congress, first session for the Monkey Run addition.

PROTECTION PROVIDED

The improvement provides protection to the City of Corning and the adjacent Villages of Painted Post, Riverside, and South Corning, against a flood discharge slightly greater than the maximum flood of record which occurred in May 1946. On Monkey Run the channel capacity is approximately two-thirds greater than the maximum flood of record which occurred in July 1935. On the tributaries, Hodgman, Post, and Cutler Creeks, protection is provided against flood substantially greater than the largest floods or record.

CONSTRUCTION

Prior to initiation of the Federal project, local interests constructed 1,500 feet of flood walls and approximately 24,100 feet of earth levees. These works were completed prior to 1918.

The Federal development occurred in five units.

- The first unit was the Painted Post improvement, constructed with Government plant and hired labor during 1937 and 1938.
- The second unit was called Corning, Section No. 1, and was constructed under contract between June 1940 and May 1942.
- The third unit, Corning, Section No. 2, also constructed by contract, began in September 1941 and was completed in August 1943.

- Work on the fourth unit, a pumping plant on the left bank of the Chemung River upstream from the mouth of Cutler Creek, was by contract, begun in August 1941 and completed in June 1942.
- The fifth unit was the channel improvement of Monkey Run in three contracts. The State of New York contracted for work which began in August 1953 and was completed in June 1954.

The two Federal contracts for Monkey Run covered a construction period from September 1953 to Jun 1955. Modifications including the relocation of the Cohocton River and its confinement between levees on both banks for a distance of about one mile near Painted Post, New York were constructed later (by contract) by the New York State Department of Transportation.

COST

Painted Post

- The Federal cost of new work was \$414,181, of which \$402,948 was for construction and \$11,233 was for lands and damages. The reported cost to local interest, prior to construction of the dual highway, was \$50,800 for lands, rights-of-way, and utility changes.

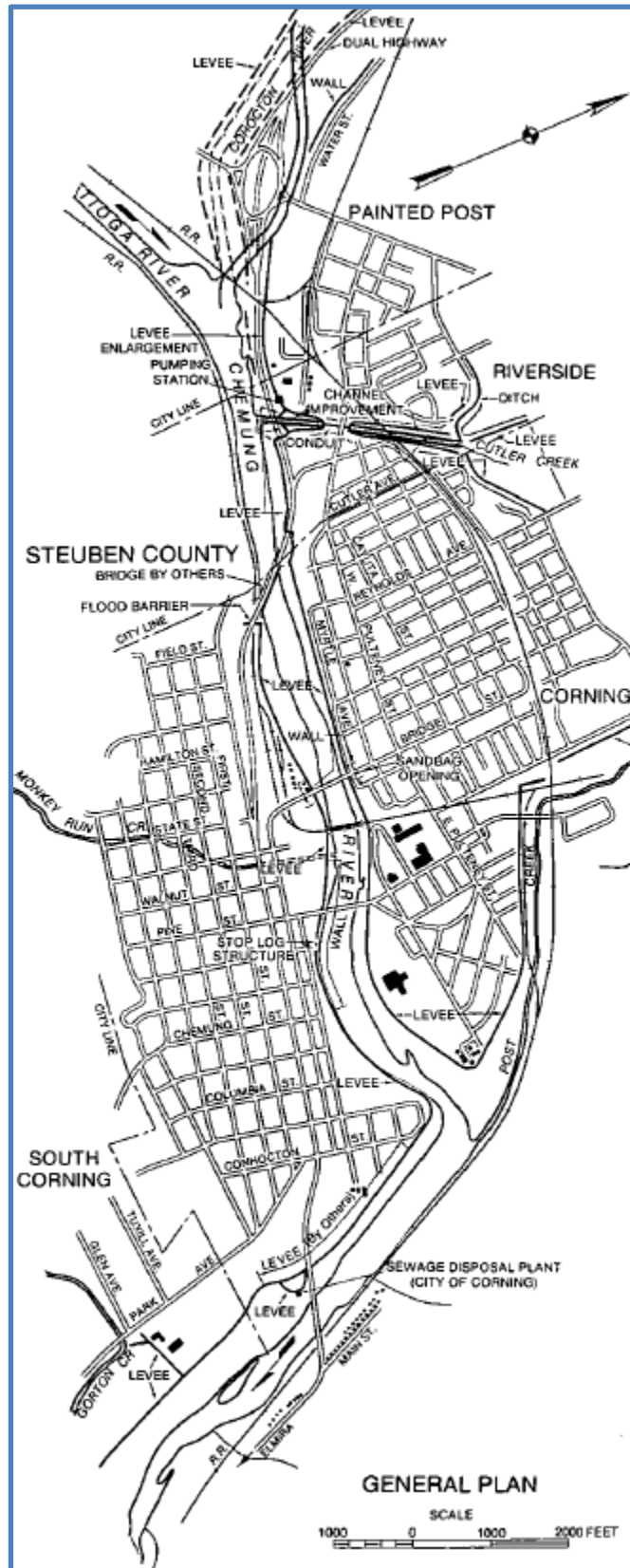
Corning

- The Federal cost of new work, completed in 1956, was \$2,204,900, of which \$2,046,900 was for construction and \$158,000 was for lands and damages. The cost to local interests was \$265,000 for lands and damages.

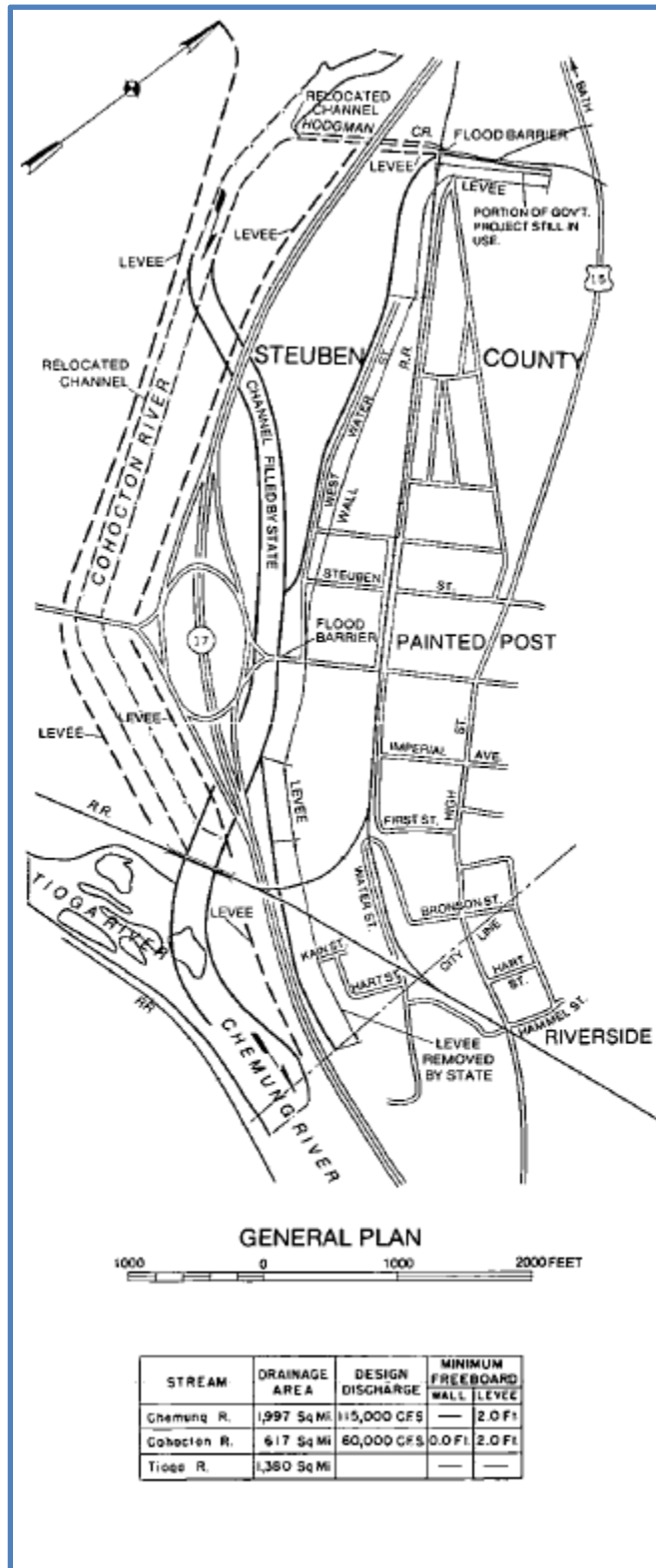
Corning – Monkey Run

- The Federal cost of new work, completed in 1956, was \$1,117,100 for construction. The cost to local interests was \$706,200 for lands, easements, rights-of-way, utility changes, and includes \$34,729 contributed by the city of Corning for local work accomplished under Federal contract and \$250,000 for construction accomplished under the State of New York in lieu of a cash contribution.

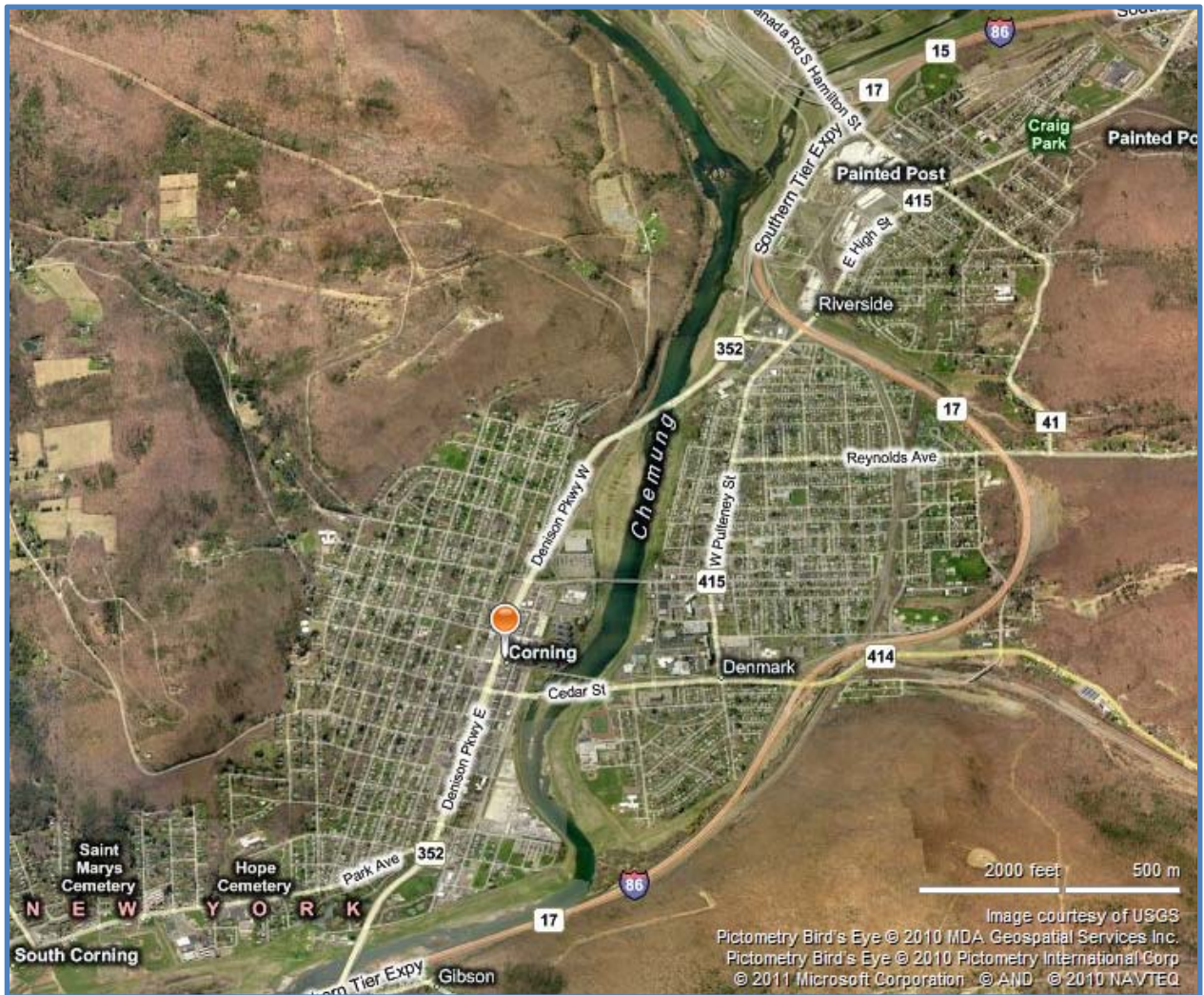
CORNING - GENERAL PLAN



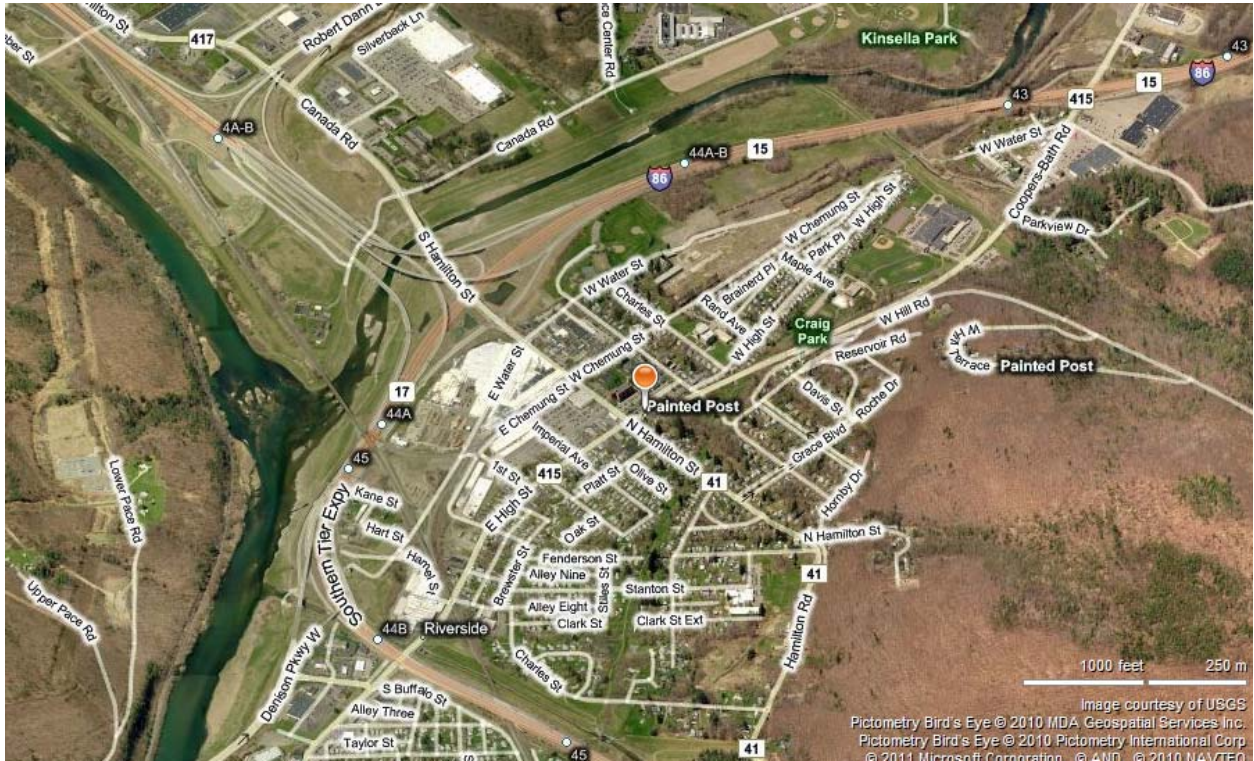
PAINTED POST - GENERAL PLAN



CORNING – BIRD’S EYE VIEW



PAINTED POST – BIRD’S EYE VIEW



CORNING – GENERAL PLAN AND AERIAL MAP OVERLAY



PAINTED POST – GENERAL PLAN AND AERIAL MAP OVERLAY

