



OXFORD FLOOD DAMAGE REDUCTION PROJECT



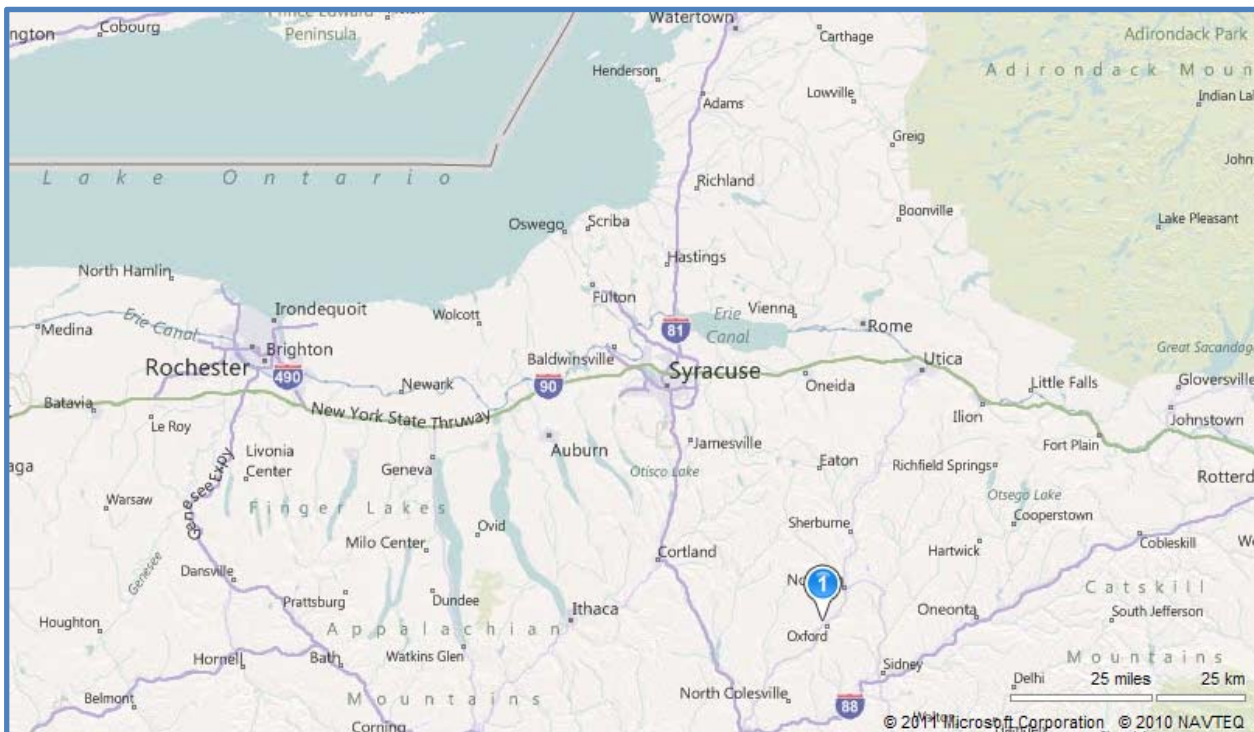
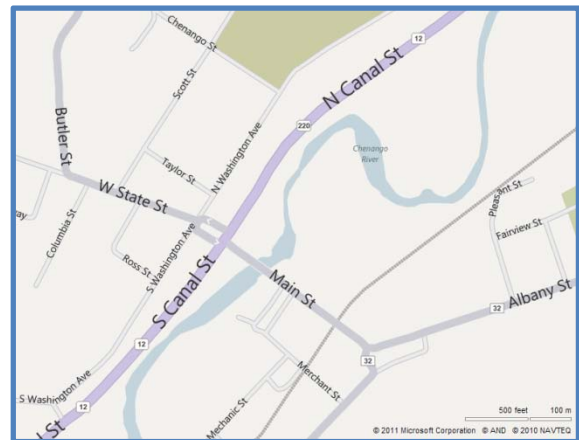
*Department of
Environmental Conservation*

Operated and Maintained by: New York State

Region 7 Counties: Broome, Cayuga, **Chenango**, Cortland, Madison, Onondaga, Oswego, Tioga, Tompkins

PROJECT LOCATION

The village of Oxford, Chenango County, New York, is situated on both banks of the Chenango River, 40 miles above its confluence with the Susquehanna River at Binghamton, New York.



PROJECT DESCRIPTION

The improvement consists of the following work:

- Construction of about 2,100 feet of earth levee on the left bank of the Chenango River extending from high ground near Main Street and running mostly along the railroad to high ground near Cemetery Drive.
- Removal of the dam and island below Main Street.
- Raising of the railroad over the levee.
- A sandbag closure across the tracks.
- Construction of appurtenant structures.

AUTHORIZATION

By enactment of the Flood Control Act approved June 22nd, 1936 (Public Law No. 738, 74th Congress), Congress authorized “Construction of detention reservoirs and related flood-control works for protection of Binghamton, Hornell, Corning, and other towns in New York and Pennsylvania in accordance with plans approved by the Chief of Engineers...” The flood-protection works at Lisle, Whitney Point Village, and Oxford, New York, constructed under that authority, as amended by the Flood Control Act approved June 28th, 1938 (Public Law No 761, 75th Congress, 3rd session), are a part of the comprehensive plan for flood control in the upper Susquehanna River watershed in southern New York and eastern Pennsylvania. The general scope of this project is described in House Document No. 702, 77th Congress, 2nd session.

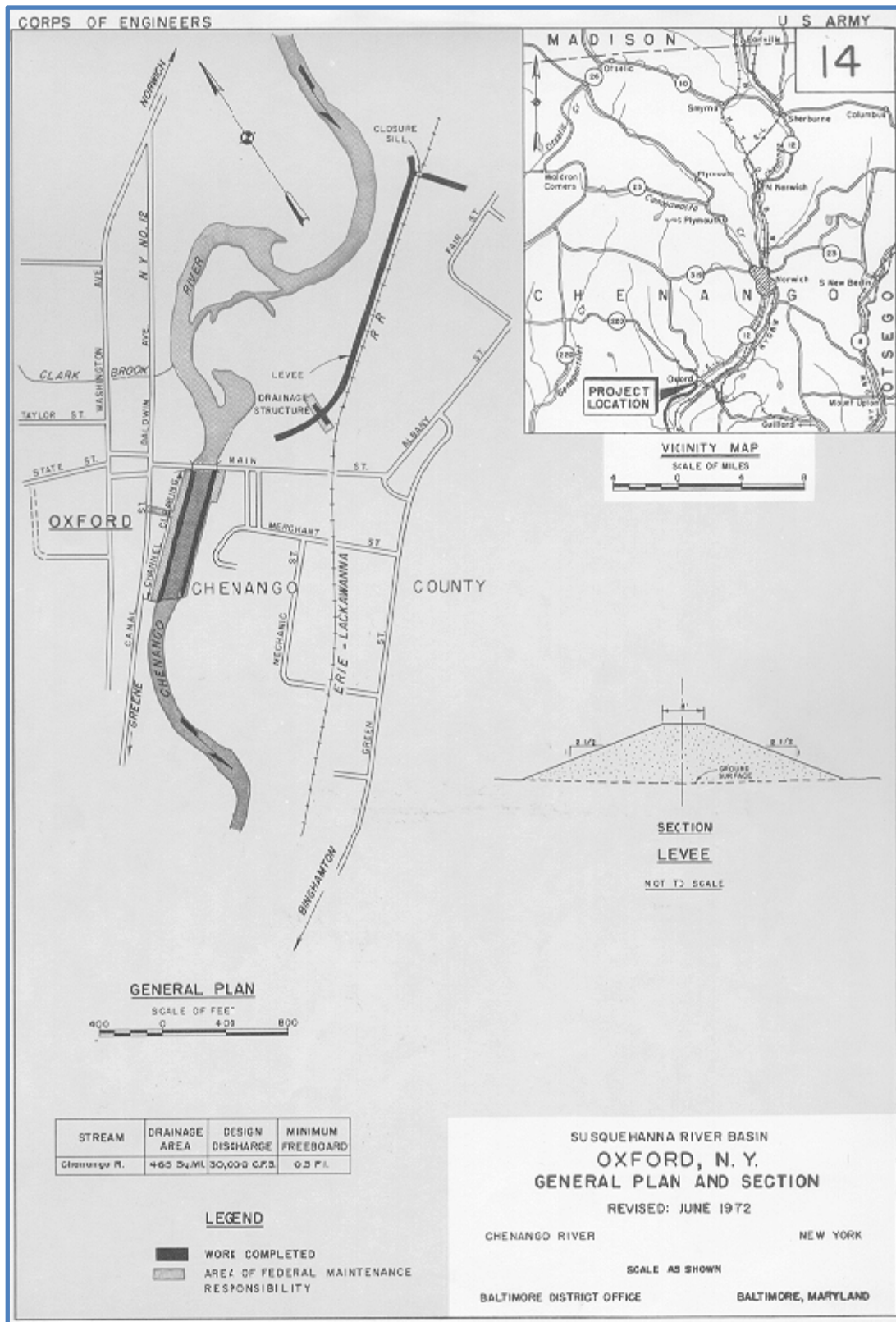
PROTECTION PROVIDED

The improvement provides protection for the village of Oxford on the left bank of the Chenango River against a flood approximately double the maximum flood of record, which occurred in July 1935.

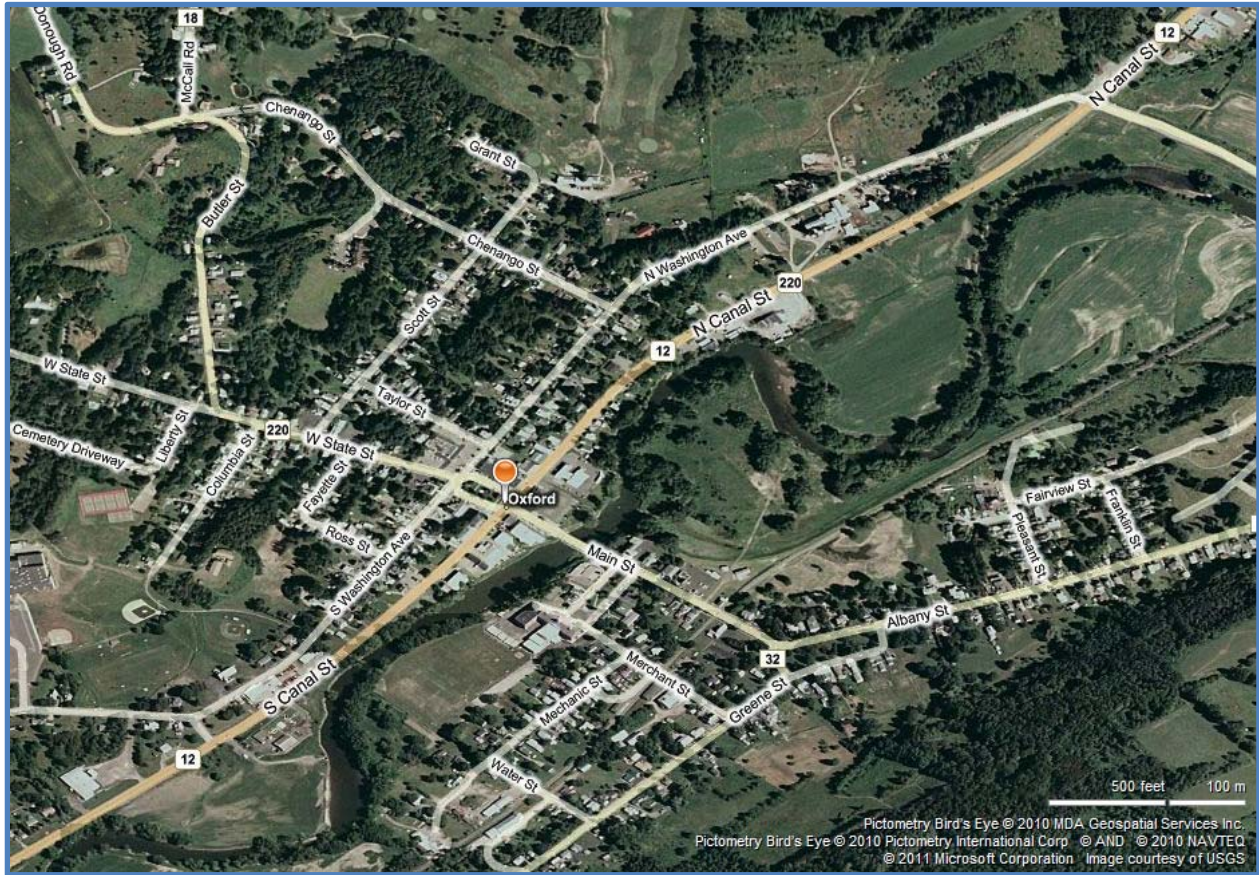
CONSTRUCTION

The protective works include an earth levee on the left bank of the Chenango River, clearing of Chenango River, removal of dam and island below Main Street, appurtenant structures, and raising of the railroad tracks where they intersect the levee. The project was constructed during the period from April 1937 to July 1938 by Government hired labor; track raising was performed by the railroad.

OXFORD - GENERAL PLAN



OXFORD – BIRD'S EYE VIEW



OXFORD – GENERAL PLAN AND AERIAL MAP OVERLAY

