



Department of
Environmental
Conservation

VLOMAN KILL

Biological Stream Assessment

April 16, 2015

STREAM BIOMONITORING UNIT

425 Jordan Rd, Troy, NY 12180
P: (518) 285-5627 | F: (518) 285-5601 | alexander.smith@dec.ny.gov

www.dec.ny.gov



Department of
Environmental
Conservation

BIOLOGICAL STREAM ASSESSMENT

Vloman Kill
Albany County, New York
Lower Hudson River Basin

Survey date: June 11, 2014
Report date: April 16, 2015

Alexander J. Smith
Elizabeth A. Mosher
Jeff L. Lojpersberger
Diana L. Heitzman
Brian T. Duffy
Margaret A. Novak

Stream Biomonitoring Unit
Bureau of Water Assessment and Management
Division of Water
NYS Department of Environmental Conservation
Albany, New York

For additional information regarding this report please contact:

Alexander J. Smith, PhD
New York State Department of Environmental Conservation
Stream Biomonitoring Unit
425 Jordan Road, Troy, NY 12180
alexander.smith@dec.ny.gov
ph 518-285-5627
fx 518-285-5601

Table of Contents

Stream	1
River Basin.....	1
Reach.....	1
Background.....	1
Results and Conclusions	1
Literature Cited	2
Figure 1. Images of Saprolegina sp. growth	3
Figure 2. Overview map, Vloman Kill watershed and 2014 sampling locations	1
Figure 3. Site location map, Vloman Kill, Station 16.2.....	2
Figure 3a. Site location map, Vloman Kill, Stations 14.8, 14.7.	3
Table 1. Survey locations on Vloman Kill, 2014.....	4
Figure 4. Biological Assessment Profile (BAP) of index values, Vloman Kill, 2014.....	5
Table 2. Summary of Impact Source Determination (ISD) results for Vloman Kill, 2014.....	5
Table 3. Macroinvertebrate species collected in Vloman Kill, 2014.....	6
Table 4. Summary of physical attributes	7
Appendix I. Biological Methods for Kick Sampling	8
Appendix II. Macroinvertebrate Community Parameters.....	9
Appendix III. Levels of Water Quality Impact in Streams.....	10
Appendix IV-A. Biological Assessment Profile:.....	11
Appendix IV-B. Biological Assessment Profile: Plotting Values	12
Appendix V. Water Quality Assessment Criteria	13
Appendix VI. The Traveling Kick Sample	14
Appendix VII-A. Aquatic Macroinvertebrates Usually Indicative of Good Water Quality	15
Appendix VII-B. Aquatic Macroinvertebrates Usually Indicative of Poor Water Quality	16
Appendix VIII. The Rationale of Biological Monitoring	17
Appendix IX. Glossary	18
Appendix X. Impact Source Determination Methods and Community Models.....	19

Stream: Vloman Kill

River Basin: Lower Hudson River

Reach: Delmar, NY, New Scotland Road to Five Rivers Environmental Education Center

Background

The Stream Biomonitoring Unit (SBU) conducted a biological assessment of water quality at three locations on the Vloman Kill, in Delmar, NY on April 16, 2015 (Figures 2, 3, and 3a; Table 1). The survey was conducted at the request of Department of Environmental Conservation (NYSDEC) Five Rivers Environmental Education Center. Five Rivers staff were interested in having benthic macroinvertebrate communities in the Vloman Kill surveyed after finding an abundance of stoneflies (Figure 1A-B) and one creek chub in the stream were covered in an unusual growth, often referred to as water mold (*Saprolegnia* sp.) (Figure 1C-F). This genus of water mold is ubiquitous throughout freshwater systems and is often responsible for substantial infections of fish and their eggs. Infections of *Saprolegnia* sp. often occur on organisms that are stressed or have weakened immune systems (Mayer 2005). Therefore it is not improbable that water quality disturbance in the Vloman Kill could be a partial stressor on biological communities making them susceptible to infection. This survey was intended to document the extent of this growth and whether the macroinvertebrate community was negatively affected by it.

To assess any impacts to aquatic life, benthic macroinvertebrate communities were collected via traveling kick sample from riffle areas at each location. Methods used are described in the Standard Operating Procedure: Biological Monitoring of Surface Waters in New York State (NYSDEC, 2014) and summarized in the appendices of this document. The contents of each sample were field-inspected to determine major groups of organisms present, and then preserved in alcohol for laboratory inspection of 100-specimen subsamples from each site. Biological assessment of water quality was conducted through calculation of benthic macroinvertebrate community metrics including the Biological Assessment Profile (BAP) score for riffle communities. Expected variability in the results of benthic macroinvertebrate community samples is presented in Smith and Bode (2004).

Results and Conclusions

The Vloman Kill watershed is approximately 31 mi² and enters the Lower Hudson River in Cedar Hill, NY just south of Albany. A developed watershed, only 44% of land use is classified as natural, forest cover. The remaining land area is a mix of low intensity developed and agricultural land.

During the survey of the Vloman Kill the contents of each macroinvertebrate sample were observed in the field in an attempt to find specimens covered in *Saprolegnia* sp.. However, after multiple collections from various sites at each sampling location, no specimens exhibiting this growth were collected. The benthic macroinvertebrate communities of the two sites on the Five Rivers property (VLOM 14.8 and 14.7) appeared healthy with a diverse mixture of insects and invertebrates, some of considerable sensitivity to pollution. As a result, we can only speculate that the growth of *Saprolegnia* sp. observed was an isolated and ephemeral occurrence. Staff of Five Rivers conduct regular volunteer and educational stream monitoring programs at these two locations on the Vloman Kill. Future incidents of this growth on macroinvertebrates at

these sites should be easily observed if it happens again. It will be useful to continue biological and water quality monitoring in this reach of the Vloman Kill to detect additional early signs of biological community stress such as the growth of *Saprolegnia* sp.

Results of the water quality survey indicate water quality in this reach of the Vloman Kill is slightly impacted suggesting conditions are sufficient to fully support aquatic life. However, the two sampling locations VLOM 14.8 and 14.7 showed some improvement over conditions at the upstream location at New Scotland Road (VLOM-16.2) (Figure 4). Although within the same assessment category, slightly impacted, the difference in BAP scores between these sites is likely the result of disparity in mayfly communities among other more sensitive groups of taxa. This is evident in the species list (Table 3) which shows the addition of four mayfly and one stonefly taxa at VLOM-14.8 and -14.7. These additional taxa improve the overall condition assessment by improving the scores for richness of sensitive Ephemeroptera, Plecoptera, Trichoptera (EPT) taxa (Figure 4). These improvements may partially be a result of increased forest cover in the immediate vicinity of the Five Rivers sampling locations (52%) compared to the upstream site (34%).

Results of Impact Source Determination (ISD) suggest possible sources of impact are either from toxic inputs, in the case of VLOM 16.2, or nutrients at VLOM 14.8 and -14.7 (Table 2). Low Nutrient Biotic Index (NBI) scores at both the downstream sites support ISD in its indication of nutrients as possible source of impact. The Colonie Golf and Country Club is located just upstream of VLOM-16.2 and runoff from golf course grounds management activities may influence the ISD results for this site. Habitat assessments were not conducted as part of this survey. Basic field parameters are summarized in Table 4. Specific conductance levels on the day of the survey were elevated but still below 800 umhos/cm which has been associated with impaired biological condition in NYS (Table 4). The SBU will continue to retain the Vloman Kill on its cycle of surface water quality monitoring in the Hudson River watershed. Continued monitoring will ensure detection of water quality and habitat disturbance in the watershed which may result in alterations of the biological communities present.

Literature Cited

Mayer, K. 2005. *Saprolegnia*: There's a fungus among us. Oregon State University, Department of Fisheries and Wildlife. Technical Report, 10 pages.

http://www.tnfish.org/FishDiseasesParasites_TWRA/files/Saprolegnia.pdf

NYSDEC, 2014. Standard Operating Procedure: Biological Monitoring of Surface Waters in New York State. NYSDEC SOP #208-14. Division of Water, New York State Department of Environmental Conservation, 625 Broadway, Albany, New York, 171 pages.

Smith, A. J., and R. W. Bode. 2004. Analysis of Variability in New York State Benthic Macroinvertebrate Samples. Division of Water, New York State Department of Environmental Conservation, 625 Broadway, Albany, New York, Technical Report, 43 pages.

Figure 1. Images of *Saprolegnia* sp. growth on a stonefly specimen (A and B) collected from the Vroman Kill, 2014. Images C-F show magnified filaments of the water mold.

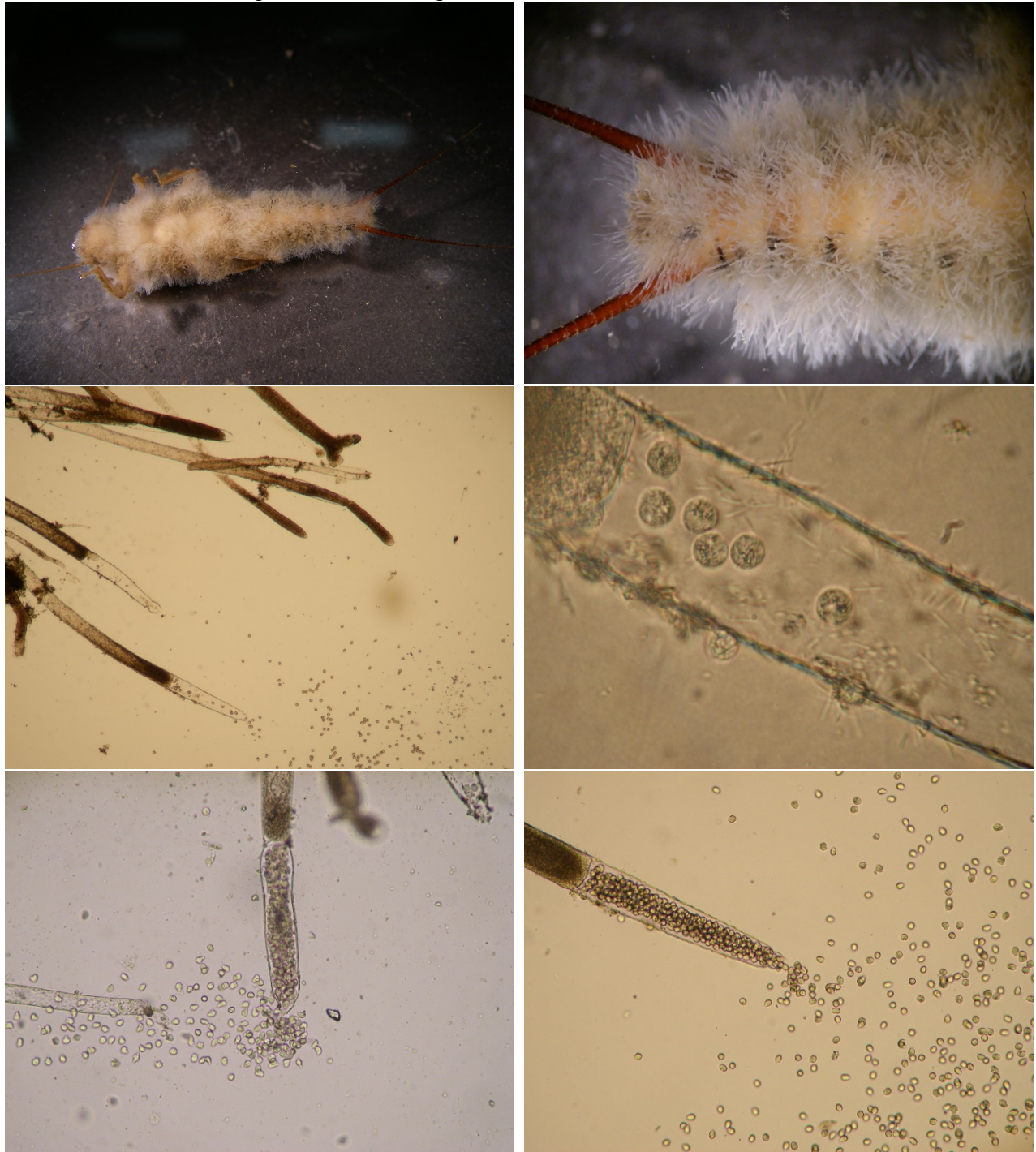


Figure 2. Overview map, Vroman Kill watershed and 2014 sampling locations.

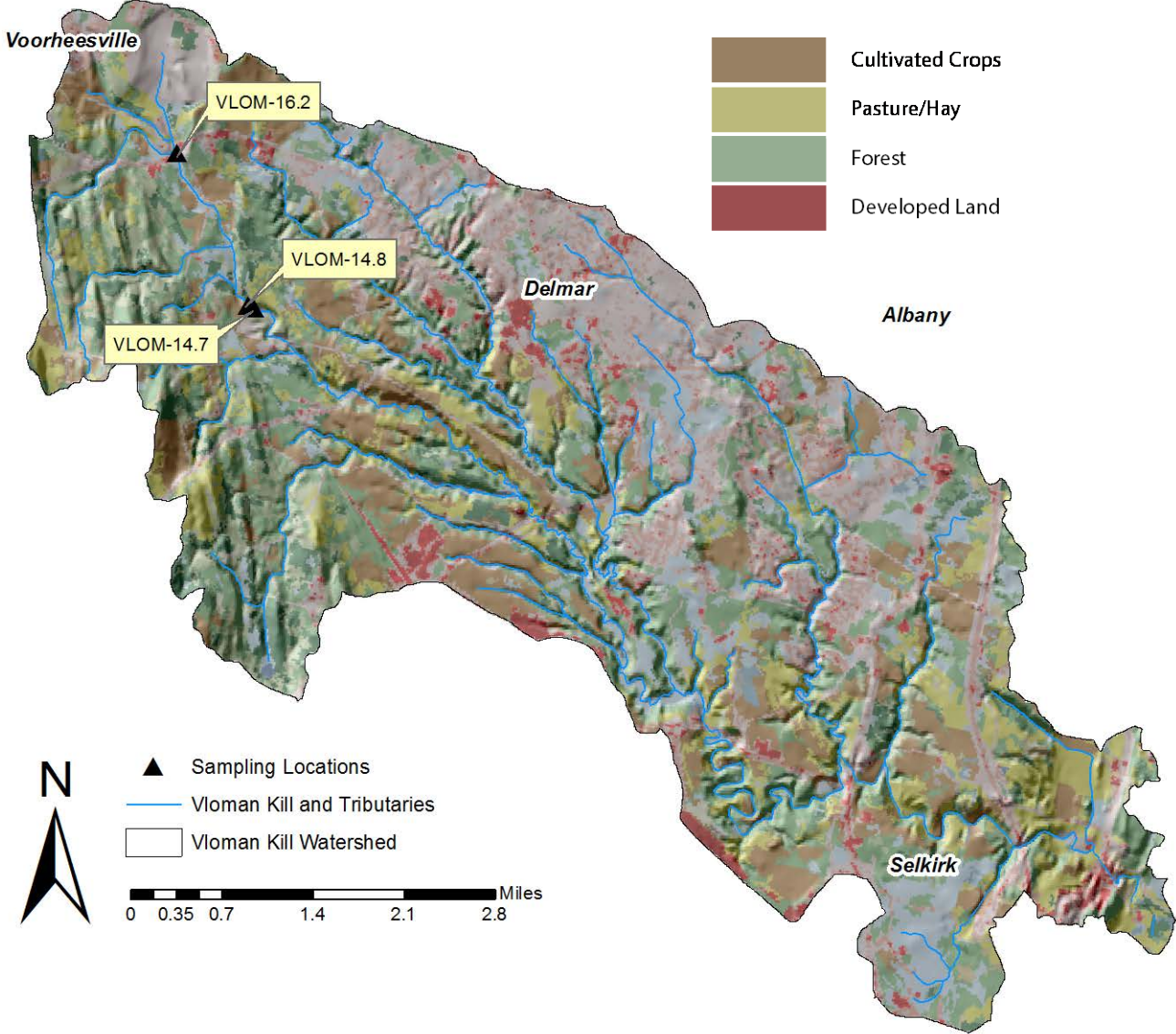


Figure 3. Site location map, Vroman Kill, Station 16.2.

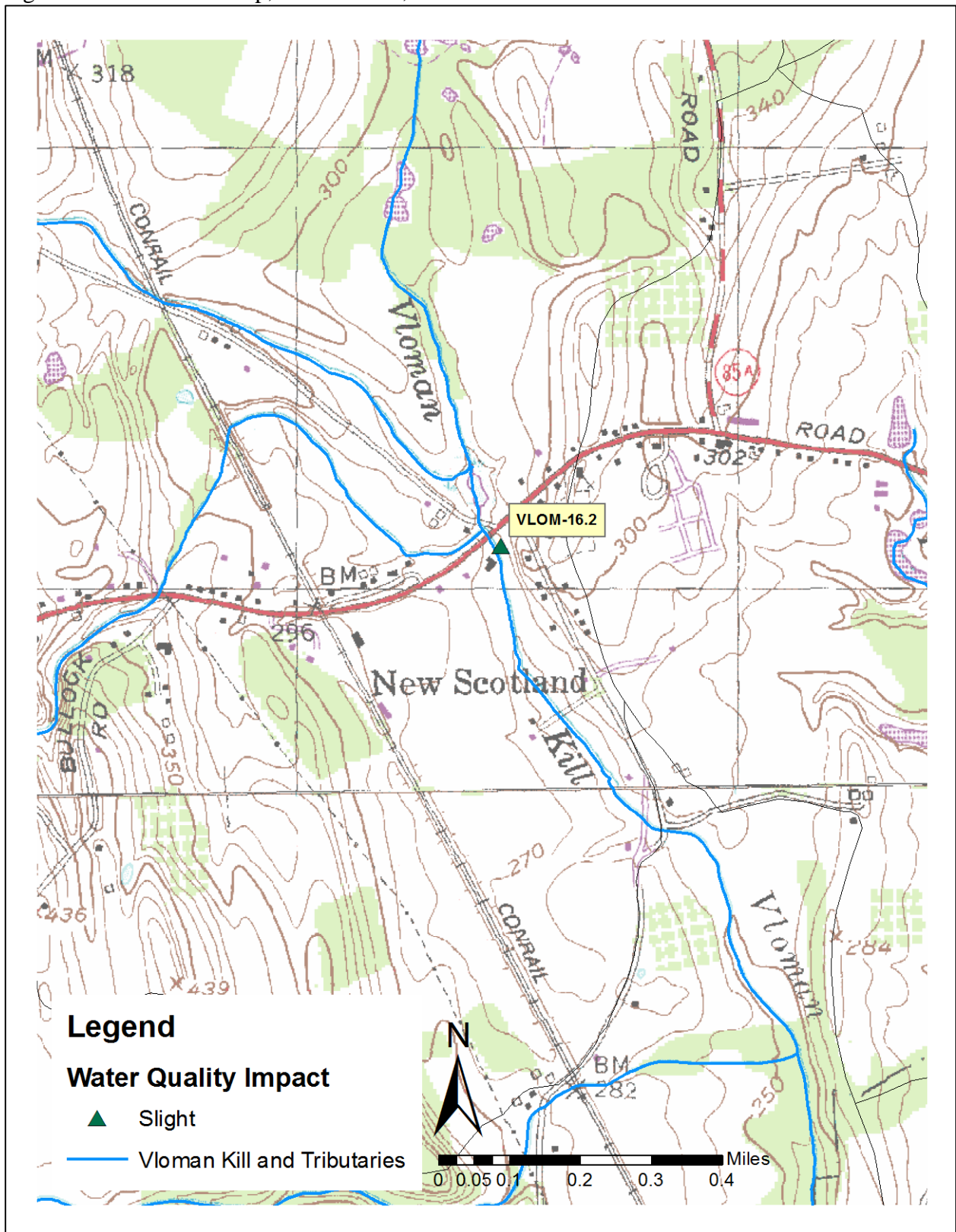


Figure 3a. Site location map, Vroman Kill, Stations 14.8, 14.7.

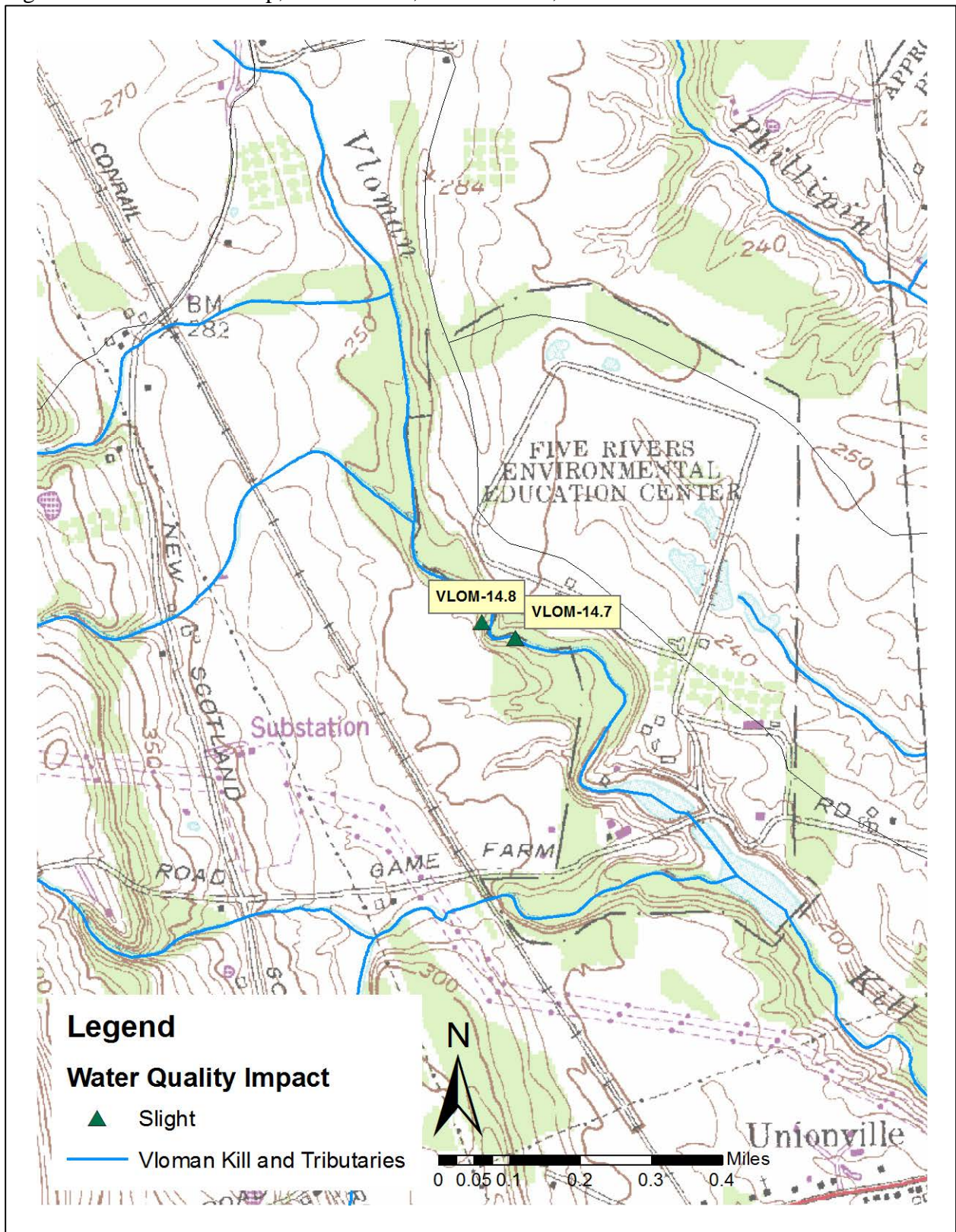


Table 1. Survey locations on Vloman Kill, 2014.

VL0M-16.2 Delmar, NY
New Scotland Rd. Bridge, Upstream
Latitude: 42.630098
Longitude: -73.908525



VL0M-14.8 Delmar, NY
Five Rivers Educational Site two
Latitude: 42.612855
Longitude: -73.898075



VL0M-14.7 Delmar, NY
Five Rivers Educational Site one
Latitude: 42.612528
Longitude: -73.897138

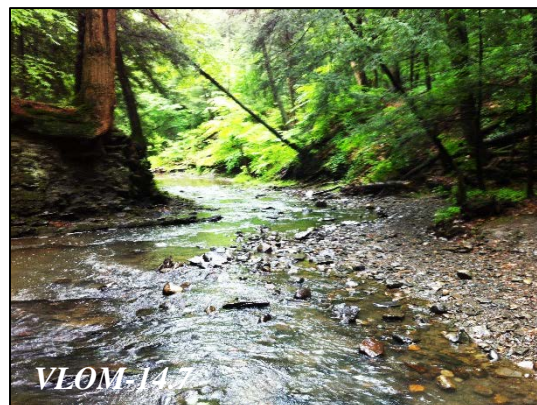


Figure 4. Biological Assessment Profile (BAP) of index values, Vloman Kill, 2014. Values are plotted on a normalized scale of water quality. The BAP represents the mean of the five values for each site, representing species richness (Spp), Ephemeroptera, Plecoptera, Trichoptera richness (EPT), Hilsenhoff’s Biotic Index (HBI), Percent Model Affinity (PMA), and the Nutrient Biotic Index for phosphorus (NBI-P). See Appendix IV for a more complete explanation.

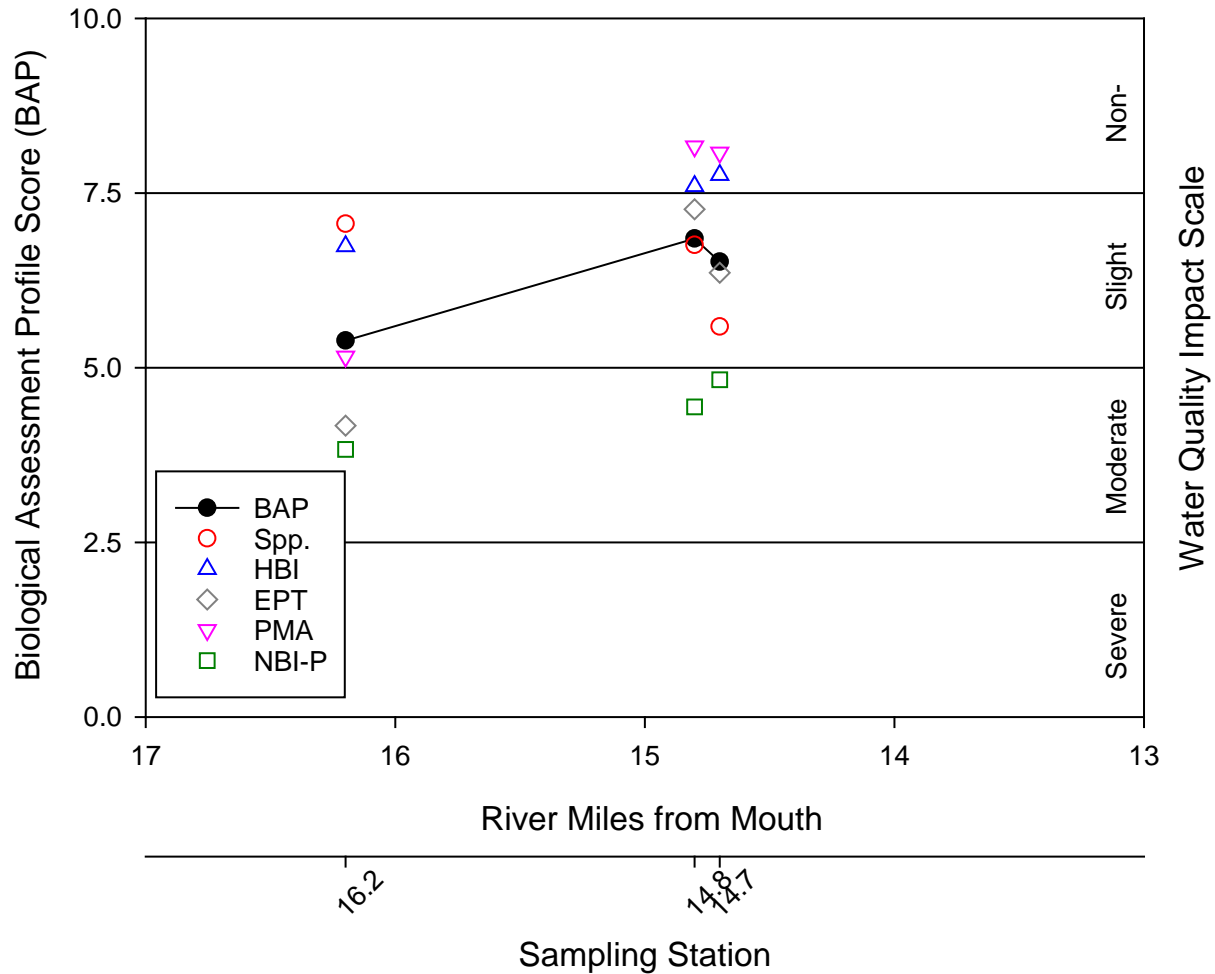


Table 2. Summary of Impact Source Determination (ISD) results for Vloman Kill, 2014. Category abbreviations are Mun./Ind.= Municipal/Industrial sources, Non-point = Non-point source nutrient runoff, Sew./An. Wastes = Sewage effluent and animal waste sources. Further detail on ISD is found in Appendix X. Shaded values represent $\geq 50\%$ similarity to ISD model communities indicating a significant result. Values $\leq 50\%$ represent inconclusive results.

Station	Mun./Ind.	Non-point	Sew./An. Wastes	Siltation	Toxic
VLOM-16.2	29	49	33	45	53
VLOM-14.8	22	62	39	44	33
VLOM-14.7	23	49*	27	35	32

* This value is less than the minimum reporting limit of 50% similarity but is worth noting that it is the highest similarity to a model community for this location and is similar to the upstream location.

Table 3. Macroinvertebrate species collected in Vloman Kill, 2014.

Genus species	Location - Station		
	VLOM-16.2	VLOM-14.8	VLOM-14.7
<i>Agneta capitata</i>		3	3
<i>Amphinemura</i> sp.		1	
<i>Baetis flavistriga</i>		13	13
<i>Baetis intercalaris</i>		4	3
<i>Baetis pluto</i>		1	5
<i>Baetis tricaudatus</i>	2	5	5
<i>Brillia flavifrons</i>	1		
<i>Caecidotea</i> sp.	1		
<i>Ceratopsyche slossonae</i>		1	
<i>Cheumatopsyche</i> sp.	9		
<i>Chimarra</i> sp.	1		
<i>Cricotopus bicinctus</i>	1		
<i>Cricotopus tremulus</i> gr.	2		
<i>Dicranota</i> sp.	2	4	3
<i>Dipheter</i> sp.			1
<i>Dubiraphia</i> sp.	1		
<i>Heterotrissocladius</i> sp.	1		
<i>Hexatoma</i> sp.		3	
<i>Maccaffertium terminatum</i>		2	2
<i>Micropsectra</i> sp.	5	1	2
<i>Microtendipes pedellus</i> gr.	6		
<i>Nanocladius</i> sp.		1	
<i>Optioservus</i> sp.	1		
<i>Paraleptophlebia</i> sp.		1	5
<i>Parametriocnemus</i> sp.	3		1
<i>Polypedilum aviceps</i>	12	22	31
<i>Polypedilum flavum</i>	1		
<i>Polypedilum illinoense</i>	1	2	1
<i>Psephenus herricki</i>	2	3	4
<i>Rheocricotopus robacki</i>	1	1	
<i>Rheotanytarsus</i> sp.		1	1
<i>Simulium</i> sp.	4		5
<i>Stenelmis</i> sp.	35	16	1
<i>Thienemanniella xena</i>			2
<i>Thienemannimyia</i> gr. spp.	2	2	
<i>Tvetenia bavarica</i> gr.		9	11
<i>Tvetenia vitracies</i>	2		1

Genus species	Location - Station		
	VLOM-16.2	VLOM-14.8	VLOM-14.7
Undet. Tubificidae w/o cap. setae		1	
Undetermined Curculionidae		1	
Undetermined Hydropsychidae		2	
Undetermined Leptophlebiidae	1		
Undetermined Orthocladiinae	3		

Table 4. Summary of physical attributes measured at each sampling location on Vloman Kill, 2014.

Station	Depth (m)	Width (m)	Embed. (%)	Temp. (°C)	Conduct. (µmhos)	pH	DO (mg/L)	DO Sat. (%)
VLOM-16.2	0.1	5	25	17	587	6.7	8.5	89
VLOM-14.8	0.1	5	25	17	585	8	8.7	90
VLOM-14.7	0.2	3	50	16	585	7.4	8.1	90

Appendix I. Biological Methods for Kick Sampling

A. Rationale: The use of the standardized kick sampling method provides a biological assessment technique that lends itself to rapid assessments of stream water quality.

B. Site Selection: Sampling sites are selected based on these criteria: (1) The sampling location should be a riffle with a substrate of rubble, gravel and sand; depth should be one meter or less, and current speed should be at least 0.4 meter per second. (2) The site should have comparable current speed, substrate type, embeddedness, and canopy cover to both upstream and downstream sites to the degree possible. (3) Sites are chosen to have a safe and convenient access.

C. Sampling: Macroinvertebrates are sampled using the standardized traveling kick method. An aquatic net is positioned in the water at arms' length downstream and the stream bottom is disturbed by foot, so that organisms are dislodged and carried into the net. Sampling is continued for a specified time and distance in the stream. Rapid assessment sampling specifies sampling for five minutes over a distance of five meters. The contents of the net are emptied into a pan of stream water. The contents are then examined, and the major groups of organisms are recorded, usually on the ordinal level (e.g., stoneflies, mayflies, caddisflies). Larger rocks, sticks, and plants may be removed from the sample if organisms are first removed from them. The contents of the pan are poured into a U.S. No. 30 sieve and transferred to a quart jar. The sample is then preserved by adding 95% ethyl alcohol.

D. Sample Sorting and Subsampling: In the laboratory, the sample is rinsed with tap water in a U.S. No. 40 standard sieve to remove any fine particles left in the residues from field sieving. The sample is transferred to an enamel pan and distributed homogeneously over the bottom of the pan. A small amount of the sample is randomly removed with a spatula, rinsed with water, and placed in a petri dish. This portion is examined under a dissecting stereomicroscope and 100 organisms are randomly removed from the debris. As they are removed, they are sorted into major groups, placed in vials containing 70 percent alcohol, and counted. The total number of organisms in the sample is estimated by weighing the residue from the picked subsample and determining its proportion of the total sample weight.

E. Organism Identification: All organisms are identified to the species level whenever possible. Chironomids and oligochaetes are slide-mounted and viewed through a compound microscope; most other organisms are identified as whole specimens using a dissecting stereomicroscope. The number of individuals in each species and the total number of individuals in the subsample are recorded on a data sheet. All organisms from the subsample are archived (either slide-mounted or preserved in alcohol). If the results of the identification process are ambiguous, suspected of being spurious, or do not yield a clear water quality assessment, additional subsampling may be required.

Appendix II. Macroinvertebrate Community Parameters

1. Species Richness: the total number of species or taxa found in a sample. For subsamples of 100-organisms each that are taken from kick samples, expected ranges in most New York State streams are: greater than 26, non-impacted; 19-26, slightly impacted; 11-18, moderately impacted, and less than 11, severely impacted.
2. EPT Richness: the total number of species of mayflies (Ephemeroptera), stoneflies (Plecoptera), and caddisflies (Trichoptera) found in an average 100-organisms subsample. These are considered to be clean-water organisms, and their presence is generally correlated with good water quality (Lenat, 1987). Expected assessment ranges from most New York State streams are: greater than 10, non-impacted; 6-10, slightly impacted; 2-5, moderately impacted, and 0-1, severely impacted.
3. Hilsenhoff Biotic Index: a measure of the tolerance of organisms in a sample to organic pollution (sewage effluent, animal wastes) and low dissolved oxygen levels. It is calculated by multiplying the number of individuals of each species by its assigned tolerance value, summing these products, and dividing by the total number of individuals. On a 0-10 scale, tolerance values range from intolerant (0) to tolerant (10). For the purpose of characterizing species' tolerance, intolerant = 0-4, facultative = 5-7, and tolerant = 8-10. Tolerance values are listed in Hilsenhoff (1987). Additional values are assigned by the NYS Stream Biomonitoring Unit. The most recent values for each species are listed in Quality Assurance document, Bode et al. (2002). Impact ranges are: 0-4.50, non-impacted; 4.51-6.50, slightly impacted; 6.51-8.50, moderately impacted, and 8.51-10.00, severely impacted.
4. Percent Model Affinity: a measure of similarity to a model, non-impacted community based on percent abundance in seven major macroinvertebrate groups (Novak and Bode, 1992). Percentage abundances in the model community are: 40% Ephemeroptera; 5% Plecoptera; 10% Trichoptera; 10% Coleoptera; 20% Chironomidae; 5% Oligochaeta; and 10% Other. Impact ranges are: greater than 64, non-impacted; 50-64, slightly impacted; 35-49, moderately impacted, and less than 35, severely impacted.
5. Nutrient Biotic Index: a measure of stream nutrient enrichment identified by macroinvertebrate taxa. It is calculated by multiplying the number of individuals of each species by its assigned tolerance value, summing these products, and dividing by the total number of individuals with assigned tolerance values. Tolerance values ranging from intolerant (0) to tolerant (10) are based on nutrient optima for Total Phosphorus (listed in Smith, 2005). Impact ranges are: 0-5.00, non-impacted; 5.01-6.00, slightly impacted; 6.01-7.00, moderately impacted, and 7.01-10.00, severely impacted.

Appendix III. Levels of Water Quality Impact in Streams

The description of overall stream water quality based on biological parameters uses a four-tiered system of classification. Level of impact is assessed for each individual parameter and then combined for all parameters to form a consensus determination. Four parameters are used: species richness, EPT richness, biotic index, and percent model affinity (see Appendix II). The consensus is based on the determination of the majority of the parameters. Since parameters measure different aspects of the macroinvertebrate community, they cannot be expected to always form unanimous assessments. The assessment ranges given for each parameter are based on subsamples of 100-organisms each that are taken from macroinvertebrate riffle kick samples. These assessments also apply to most multiplate samples, with the exception of percent model affinity.

1. *Non-impacted*: Indices reflect very good water quality. The macroinvertebrate community is diverse, usually with at least 27 species in riffle habitats. Mayflies, stoneflies, and caddisflies are well represented; EPT richness is greater than 10. The biotic index value is 4.50 or less. Percent model affinity is greater than 64. Nutrient Biotic Index is 5.00 or less. Water quality should not be limiting to fish survival or propagation. This level of water quality includes both pristine habitats and those receiving discharges which minimally alter the biota.

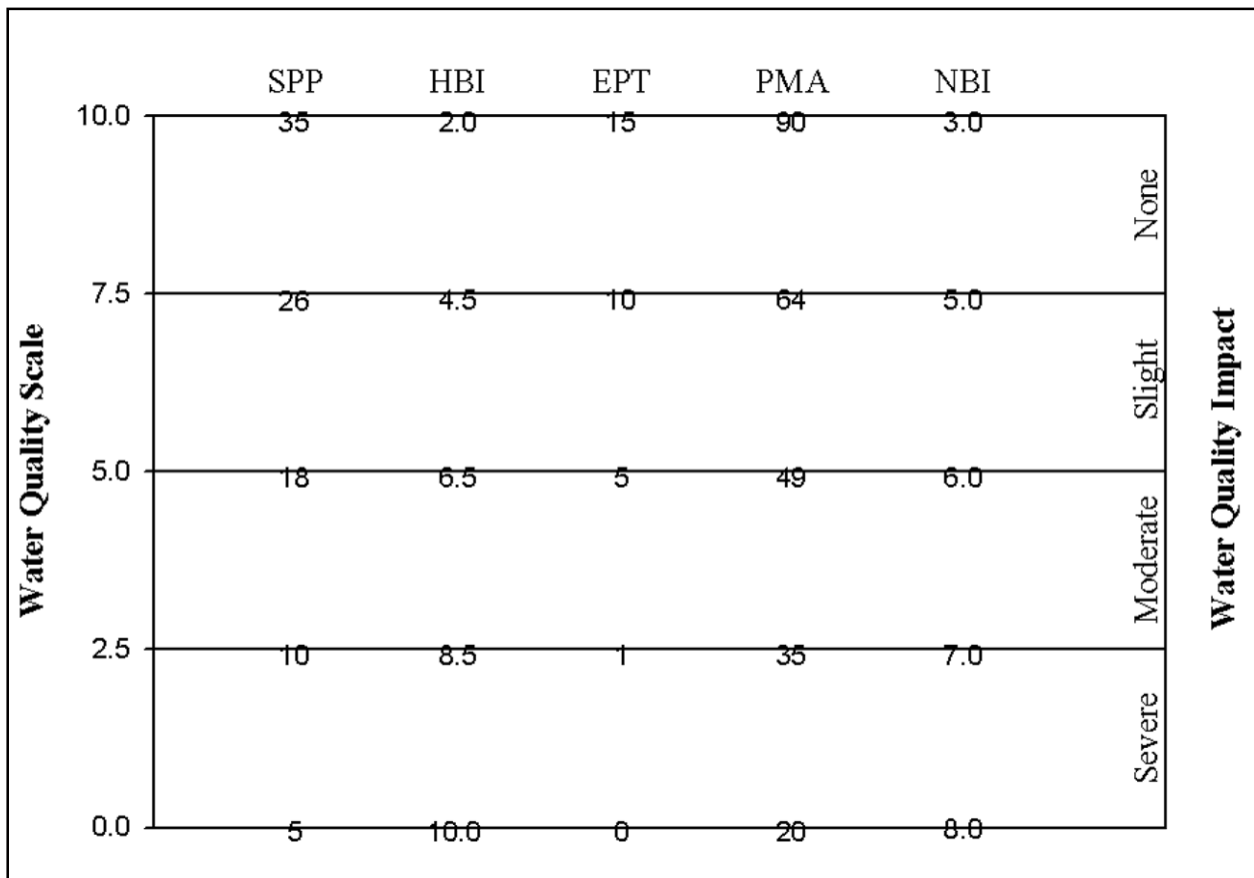
2. *Slightly impacted*: Indices reflect good water quality. The macroinvertebrate community is slightly but significantly altered from the pristine state. Species richness is usually 19-26. Mayflies and stoneflies may be restricted, with EPT richness values of 6-10. The biotic index value is 4.51-6.50. Percent model affinity is 50-64. Nutrient Biotic Index is 5.01-6.00. Water quality is usually not limiting to fish survival, but may be limiting to fish propagation.

3. *Moderately impacted*: Indices reflect poor water quality. The macroinvertebrate community is altered to a large degree from the pristine state. Species richness is usually 11-18 species. Mayflies and stoneflies are rare or absent, and caddisflies are often restricted; the EPT richness is 2-5. The biotic index value is 6.51-8.50. Percent model affinity is 35-49. Nutrient Biotic Index is 6.01-7.00. Water quality often is limiting to fish propagation, but usually not to fish survival.

4. *Severely impacted*: Indices reflect very poor water quality. The macroinvertebrate community is limited to a few tolerant species. Species richness is 10 or fewer. Mayflies, stoneflies and caddisflies are rare or absent; EPT richness is 0-1. The biotic index value is greater than 8.50. Percent model affinity is less than 35. Nutrient Biotic Index is greater than 7.00. The dominant species are almost all tolerant, and are usually midges and worms. Often, 1-2 species are very abundant. Water quality is often limiting to both fish propagation and fish survival.

Appendix IV-A. Biological Assessment Profile: Conversion of Index Values to a 10-Scale

The Biological Assessment Profile (BAP) of index values, developed by Phil O'Brien, Division of Water, NYSDEC, is a method of plotting biological index values on a common scale of water quality impact. Values from the five indices -- species richness (SPP), EPT richness (EPT), Hilsenhoff Biotic Index (HBI), Percent Model Affinity (PMA), and Nutrient Biotic Index (NBI) - defined in Appendix II are converted to a common 0-10 scale using the formulae in the Quality Assurance document (Bode, et al., 2002), and as shown in the figure below.



Appendix IV-B. Biological Assessment Profile: Plotting Values

To plot survey data:

1. Position each site on the x-axis according to miles or tenths of a mile upstream of the mouth.
2. Plot the values of the four indices for each site as indicated by the common scale.
3. Calculate the mean of the four values and plot the result. This represents the assessed impact for each site.

Example data:

	Station 1		Station 2	
	metric value	10-scale value	metric value	10-scale value
Species richness	20	5.59	33	9.44
Hilsenhoff Biotic Index	5.00	7.40	4.00	8.00
EPT richness	9	6.80	13	9.00
Percent Model Affinity	55	5.97	65	7.60
Nutrient Biotic Index	6.0	5.0	6.0	5.0
Average		6.152 (slight)		7.8 (non-)

Appendix V. Water Quality Assessment Criteria

Non-Navigable Flowing Waters

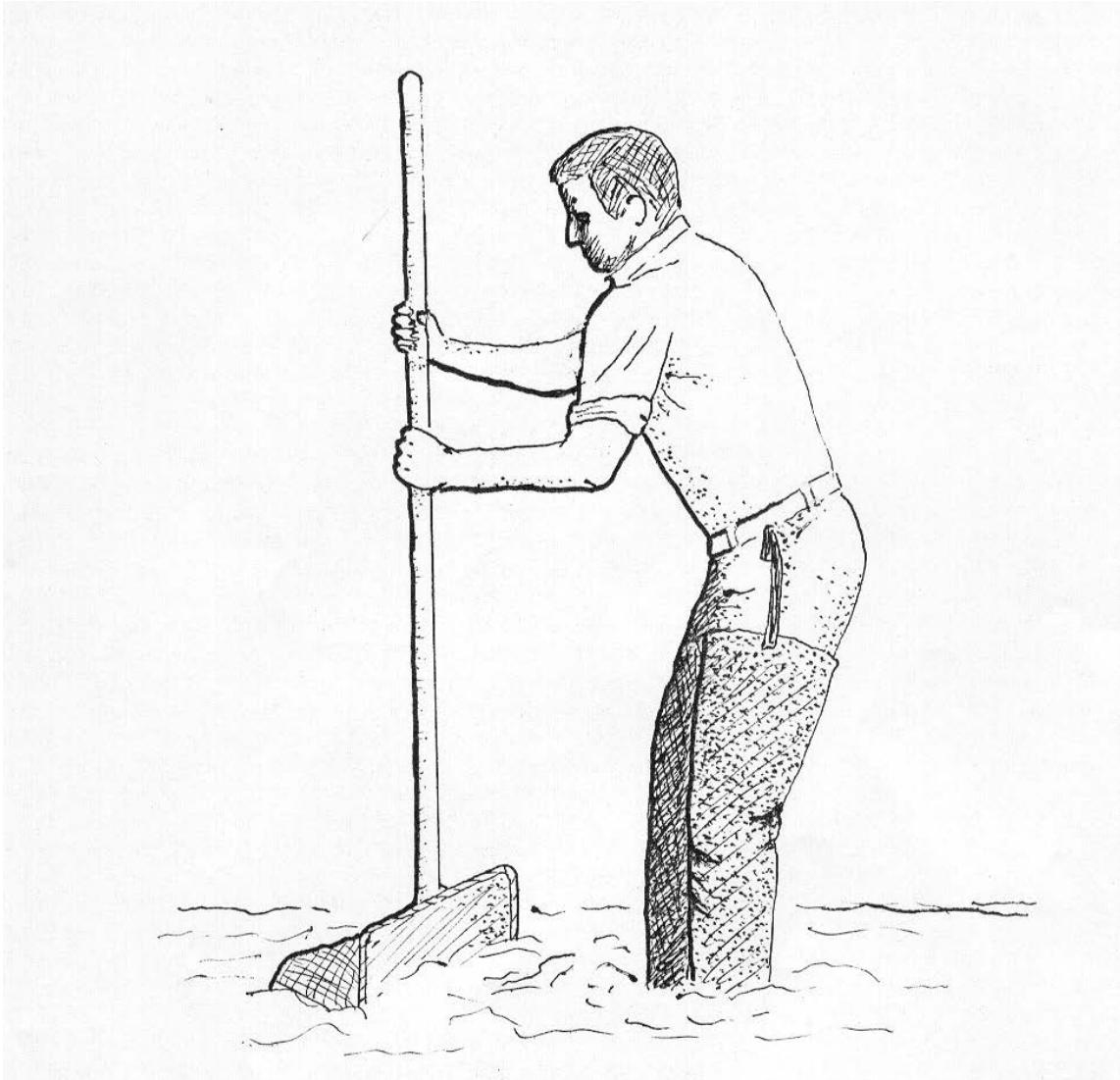
	Species Richness	Hilsenhoff Biotic Index	EPT Value	Percent Model Affinity*	Nutrient Biotic Index
Non-Impacted	>26	0.00-4.50	>10	>64	<5.00
Slightly Impacted	19-26	4.51-6.50	6-10	50-64	5.01-6.00
Moderately Impacted	11-18	6.51-8.50	2-5	35-49	6.01-7.00
Severely Impacted	0-10	8.51-10.00	0-1	<35	>7.01

* Percent model affinity criteria used for traveling kick samples but not for multiplate samples.

Navigable Flowing Waters

	Species Richness	Hilsenhoff Biotic Index	EPT Richness	Species Diversity
Non-Impacted	>21	0.00-7.00	>5	>3.00
Slightly Impacted	17-21	7.01-8.00	4-5	2.51-3.00
Moderately Impacted	12-16	8.01-9.00	2-3	2.01-2.50
Severely Impacted	0-11	9.01-10.00	0-1	0.00-2.00

Appendix VI. The Traveling Kick Sample



Rocks and sediment in a riffle are dislodged by foot upstream of a net. Dislodged organisms are

← current

carried by the current into the net. Sampling continues for five minutes, as the sampler gradually moves downstream to cover a distance of five meters

Appendix VII-A. Aquatic Macroinvertebrates Usually Indicative of Good Water Quality

Mayfly nymphs are often the most numerous organisms found in clean streams. They are sensitive to most types of pollution, including low dissolved oxygen (less than 5 ppm), chlorine, ammonia, metals, pesticides, and acidity. Most mayflies are found clinging to the undersides of rocks.



MAYFLIES

Stonefly nymphs are mostly limited to cool, well-oxygenated streams. They are sensitive to most of the same pollutants as mayflies, except acidity. They are usually much less numerous than mayflies. The presence of even a few stoneflies in a stream suggests that good water quality has been maintained for several months.



STONEFLIES

Caddisfly larvae often build a portable case of sand, stones, sticks, or other debris. Many caddisfly larvae are sensitive to pollution, although a few are tolerant. One family spins nets to catch drifting plankton, and is often numerous in nutrient-enriched stream segments.



CADDISFLIES

The most common beetles in streams are riffle beetles (adult and larva pictured) and water pennies (not shown). Most of these require a swift current and an adequate supply of oxygen, and are generally considered clean-water indicators.



BEETLES



Appendix VII-B. Aquatic Macroinvertebrates Usually Indicative of Poor Water Quality

Midges are the most common aquatic flies. The larvae occur in almost any aquatic situation. Many species are very tolerant to pollution. Large, red midge larvae called “bloodworms” indicate organic enrichment. Other midge larvae filter plankton, indicating nutrient enrichment when numerous.



MIDGES

Black fly larvae have specialized structures for filtering plankton and bacteria from the water, and require a strong current. Some species are tolerant of organic enrichment and toxic contaminants, while others are intolerant of pollutants.



BLACK FLIES



The segmented worms include the leeches and the small aquatic worms. The latter are usually unnoticed. They burrow in the substrate and feed on bacteria in the sediment. They can thrive under conditions of severe pollution and very low oxygen levels, and are thus valuable pollution indicators. Many leeches are also tolerant of poor water quality.



WORMS

more common, though



Aquatic sowbugs are crustaceans that are often numerous in situations of high organic content and low oxygen levels. They are classic indicators of sewage pollution, and can also thrive in toxic situations.

Digital images by Larry Abele, New York State Department of Environmental Conservation, Stream Biomonitoring Unit.



SOWBUGS

Appendix VIII. The Rationale of Biological Monitoring

Biological monitoring refers to the use of resident benthic macroinvertebrate communities as indicators of water quality. Macroinvertebrates are larger-than-microscopic invertebrate animals that inhabit aquatic habitats; freshwater forms are primarily aquatic insects, worms, clams, snails, and crustaceans.

Concept:

Nearly all streams are inhabited by a community of benthic macroinvertebrates. The species comprising the community each occupy a distinct niche defined and limited by a set of environmental requirements. The composition of the macroinvertebrate community is thus determined by many factors, including habitat, food source, flow regime, temperature, and water quality. The community is presumed to be controlled primarily by water quality if the other factors are determined to be constant or optimal. Community components which can change with water quality include species richness, diversity, balance, abundance, and presence/absence of tolerant or intolerant species. Various indices or metrics are used to measure these community changes. Assessments of water quality are based on metric values of the community, compared to expected metric values.

Advantages:

The primary advantages to using macroinvertebrates as water quality indicators are that they:

- are sensitive to environmental impacts
- are less mobile than fish, and thus cannot avoid discharges
- can indicate effects of spills, intermittent discharges, and lapses in treatment
- are indicators of overall, integrated water quality, including synergistic effects
- are abundant in most streams and are relatively easy and inexpensive to sample
- are able to detect non-chemical impacts to the habitat, e.g. siltation or thermal changes
- are vital components of the aquatic ecosystem and important as a food source for fish
- are more readily perceived by the public as tangible indicators of water quality
- can often provide an on-site estimate of water quality
- can often be used to identify specific stresses or sources of impairment
- can be preserved and archived for decades, allowing for direct comparison of specimens
- bioaccumulate many contaminants, so that analysis of their tissues is a good monitor of toxic substances in the aquatic food chain

Limitations:

Biological monitoring is not intended to replace chemical sampling, toxicity testing, or fish surveys. Each of these measurements provides information not contained in the others. Similarly, assessments based on biological sampling should not be taken as being representative of chemical sampling. Some substances may be present in levels exceeding ambient water quality criteria, yet have no apparent adverse community impact.

Appendix IX. Glossary

Anthropogenic: caused by human actions

Assessment: a diagnosis or evaluation of water quality

Benthos: organisms occurring on or in the bottom substrate of a waterbody

Bioaccumulate: accumulate contaminants in the tissues of an organism

Biomonitoring: the use of biological indicators to measure water quality

Community: a group of populations of organisms interacting in a habitat

Drainage basin: an area in which all water drains to a particular waterbody; watershed

Electrofishing: sampling fish by using electric currents to temporarily immobilize them, allowing capture

EPT richness: the number of taxa of mayflies (Ephemeroptera), stoneflies (Plecoptera), and caddisflies (Trichoptera) in a sample or subsample

Eutrophic: high nutrient levels normally leading to excessive biological productivity

Facultative: occurring over a wide range of water quality; neither tolerant nor intolerant of poor water quality

Fauna: the animal life of a particular habitat

Impact: a change in the physical, chemical, or biological condition of a waterbody

Impairment: a detrimental effect caused by an impact

Index: a number, metric, or parameter derived from sample data used as a measure of water quality

Intolerant: unable to survive poor water quality

Longitudinal trends: upstream-downstream changes in water quality in a river or stream

Macroinvertebrate: a larger-than-microscopic invertebrate animal that lives at least part of its life in aquatic habitats

Mesotrophic: intermediate nutrient levels (between oligotrophic and eutrophic) normally leading to moderate biological productivity

Multiplate: multiple-plate sampler, a type of artificial substrate sampler of aquatic macroinvertebrates

Non Chironomidae/Oligochaeta (NCO) richness: the number of taxa neither belonging to the family Chironomidae nor the subclass Oligochaeta in a sample or subsample

Oligotrophic: low nutrient levels normally leading to unproductive biological conditions

Organism: a living individual

PAHs: Polycyclic Aromatic Hydrocarbons, a class of organic compounds that are often toxic or carcinogenic.

Rapid bioassessment: a biological diagnosis of water quality using field and laboratory analysis designed to allow assessment of water quality in a short turn-around time; usually involves kick sampling and laboratory subsampling of the sample

Riffle: wadeable stretch of stream usually with a rubble bottom and sufficient current to have the water surface broken by the flow; rapids

Species richness: the number of macroinvertebrate taxa in a sample or subsample

Station: a sampling site on a waterbody

Survey: a set of samplings conducted in succession along a stretch of stream

Synergistic effect: an effect produced by the combination of two factors that is greater than the sum of the two factors

Tolerant: able to survive poor water quality

Trophic: referring to productivity

Appendix X. Impact Source Determination Methods and Community Models

Definition: Impact Source Determination (ISD) is the procedure for identifying types of impacts that exert deleterious effects on a waterbody. While the analysis of benthic macroinvertebrate communities has been shown to be an effective means of determining severity of water quality impacts, it has been less effective in determining what kind of pollution is causing the impact. ISD uses community types or models to ascertain the primary factor influencing the fauna.

Development of methods: The method found to be most useful in differentiating impacts in New York State streams was the use of community types based on composition by family and genus. It may be seen as an elaboration of Percent Model Affinity (Novak and Bode, 1992), which is based on class and order. A large database of macroinvertebrate data was required to develop ISD methods. The database included several sites known or presumed to be impacted by specific impact types. The impact types were mostly known by chemical data or land use. These sites were grouped into the following general categories: agricultural nonpoint, toxic-stressed, sewage (domestic municipal), sewage/toxic, siltation, impoundment, and natural. Each group initially contained 20 sites. Cluster analysis was then performed within each group, using percent similarity at the family or genus level. Within each group, four clusters were identified. Each cluster was usually composed of 4-5 sites with high biological similarity. From each cluster, a hypothetical model was then formed to represent a model cluster community type; sites within the cluster had at least 50 percent similarity to this model. These community type models formed the basis for ISD (see tables following). The method was tested by calculating percent similarity to all the models and determining which model was the most similar to the test site. Some models were initially adjusted to achieve maximum representation of the impact type. New models are developed when similar communities are recognized from several streams.

Use of the ISD methods: Impact Source Determination is based on similarity to existing models of community types (see tables following). The model that exhibits the highest similarity to the test data denotes the likely impact source type, or may indicate "natural," lacking an impact. In the graphic representation of ISD, only the highest similarity of each source type is identified. If no model exhibits a similarity to the test data of greater than 50 percent, the determination is inconclusive. The determination of impact source type is used in conjunction with assessment of severity of water quality impact to provide an overall assessment of water quality.

Limitations: These methods were developed for data derived from subsamples of 100-organisms each that are taken from traveling kick samples of New York State streams. Application of these methods for data derived from other sampling methods, habitats, or geographical areas would likely require modification of the models.

ISD Models

	NATURAL												
	A	B	C	D	E	F	G	H	I	J	K	L	M
PLATYHELMINTHES	-	-	-	-	-	-	-	-	-	-	-	-	-
OLIGOCHAETA	-	-	5	-	5	-	5	5	-	-	-	5	5
HIRUDINEA	-	-	-	-	-	-	-	-	-	-	-	-	-
GASTROPODA	-	-	-	-	-	-	-	-	-	-	-	-	-
SPHAERIIDAE	-	-	-	-	-	-	-	-	-	-	-	-	-
ASELLIDAE	-	-	-	-	-	-	-	-	-	-	-	-	-
GAMMARIDAE	-	-	-	-	-	-	-	-	-	-	-	-	-
Isonychia	5	5	-	5	20	-	-	-	-	-	-	-	-
BAETIDAE	20	10	10	10	10	5	10	10	10	10	5	15	40
HEPTAGENIIDAE	5	10	5	20	10	5	5	5	5	10	10	5	5
LEPTOPHLEBIIDAE	5	5	-	-	-	-	-	-	5	-	-	25	5
EPHEMERELLIDAE	5	5	5	10	-	10	10	30	-	5	-	10	5
Caenis/Tricorythodes	-	-	-	-	-	-	-	-	-	-	-	-	-
PLECOPTERA	-	-	-	5	5	-	5	5	15	5	5	5	5
Psephenus	5	-	-	-	-	-	-	-	-	-	-	-	-
Optioservus	5	-	20	5	5	-	5	5	5	5	-	-	-
Promoresia	5	-	-	-	-	-	25	-	-	-	-	-	-
Stenelmis	10	5	10	10	5	-	-	-	10	-	-	-	5
PHILOPOTAMIDAE	5	20	5	5	5	5	5	-	5	5	5	5	5
HYDROPSYCHIDAE	10	5	15	15	10	10	5	5	10	15	5	5	10
HELICOPSYCHIDAE/ BRACHYCENTRIDAE/													
RHYACOPHILIDAE	5	5	-	-	-	20	-	5	5	5	5	5	-
SIMULIIDAE	-	-	-	5	5	-	-	-	-	5	-	-	-
Simulium vittatum	-	-	-	-	-	-	-	-	-	-	-	-	-
EMPIDIDAE	-	-	-	-	-	-	-	-	-	-	-	-	-
TIPULIDAE	-	-	-	-	-	-	-	-	5	-	-	-	-
CHIRONOMIDAE													
Tanypodinae	-	5	-	-	-	-	-	-	5	-	-	-	-
Diamesinae	-	-	-	-	-	-	5	-	-	-	-	-	-
Cardiocladius	-	5	-	-	-	-	-	-	-	-	-	-	-
Cricotopus/ Orthocladius	5	5	-	-	10	-	-	5	-	-	5	5	5
Eukiefferiella/ Tvetenia	5	5	10	-	-	5	5	5	-	5	-	5	5
Parametricnemus	-	-	-	-	-	-	-	5	-	-	-	-	-
Chironomus	-	-	-	-	-	-	-	-	-	-	-	-	-
Polypedilum aviceps	-	-	-	-	-	20	-	-	10	20	20	5	-
Polypedilum (all others)	5	5	5	5	5	-	5	5	-	-	-	-	-
Tanytarsini	-	5	10	5	5	20	10	10	10	10	40	5	5
TOTAL	100	100	100	100	100	100	100	100	100	100	100	100	100

ISD Models (cont'd)

NONPOINT NUTRIENTS, PESTICIDES										
	A	B	C	D	E	F	G	H	I	J
PLATYHELMINTHES	-	-	-	-	-	-	-	-	-	-
OLIGOCHAETA	-	-	-	5	-	-	-	-	-	15
HIRUDINEA	-	-	-	-	-	-	-	-	-	-
GASTROPODA	-	-	-	-	-	-	-	-	-	-
SPHAERIIDAE	-	-	-	5	-	-	-	-	-	-
ASELLIDAE	-	-	-	-	-	-	-	-	-	-
GAMMARIDAE	-	-	-	5	-	-	-	-	-	-
Isonychia	-	-	-	-	-	-	-	5	-	-
BAETIDAE	5	15	20	5	20	10	10	5	10	5
HEPTAGENIIDAE	-	-	-	-	5	5	5	5	-	5
LEPTOPHLEBIIDAE	-	-	-	-	-	-	-	-	-	-
EPHEMERELLIDAE	-	-	-	-	-	-	-	5	-	-
Caenis/Tricorythodes	-	-	-	-	5	-	-	5	-	5
PLECOPTERA	-	-	-	-	-	-	-	-	-	-
Psephenus	5	-	-	5	-	5	5	-	-	-
Optioservus	10	-	-	5	-	-	15	5	-	5
Promoresia	-	-	-	-	-	-	-	-	-	-
Stenelmis	15	15	-	10	15	5	25	5	10	5
PHILOPOTAMIDAE	15	5	10	5	-	25	5	-	-	-
HYDROPSYCHIDAE	15	15	15	25	10	35	20	45	20	10
HELICOPSYCHIDAE/ BRACHYCENTRIDAE/ RHYACOPHILIDAE	-	-	-	-	-	-	-	-	-	-
SIMULIIDAE	5	-	15	5	5	-	-	-	40	-
Simulium vittatum	-	-	-	-	-	-	-	-	5	-
EMPIDIDAE	-	-	-	-	-	-	-	-	-	-
TIPULIDAE	-	-	-	-	-	-	-	-	-	5
CHIRONOMIDAE										
Tanypodinae	-	-	-	-	-	-	5	-	-	5
Cardiocladius	-	-	-	-	-	-	-	-	-	-
Cricotopus/ Orthocladius	10	15	10	5	-	-	-	-	5	5
Eukiefferiella/ Tvetenia	-	15	10	5	-	-	-	-	5	-
Parametrioctenemus	-	-	-	-	-	-	-	-	-	-
Microtendipes	-	-	-	-	-	-	-	-	-	20
Polypedilum aviceps	-	-	-	-	-	-	-	-	-	-
Polypedilum (all others)	10	10	10	10	20	10	5	10	5	5
Tanytarsini	10	10	10	5	20	5	5	10	-	10
TOTAL	100	100	100	100	100	100	100	100	100	100

ISD Models (cont'd)

	MUNICIPAL/INDUSTRIAL								TOXIC					
	A	B	C	D	E	F	G	H	A	B	C	D	E	F
PLATYHELMINTHES	-	40	-	-	-	5	-	-	-	-	-	-	5	-
OLIGOCHAETA	20	20	70	10	-	20	-	-	-	10	20	5	5	15
HIRUDINEA	-	5	-	-	-	-	-	-	-	-	-	-	-	-
GASTROPODA	-	-	-	-	-	5	-	-	-	5	-	-	-	5
SPHAERIIDAE	-	5	-	-	-	-	-	-	-	-	-	-	-	-
ASELLIDAE	10	5	10	10	15	5	-	-	10	10	-	20	10	5
GAMMARIDAE	40	-	-	-	15	-	5	5	5	-	-	-	5	5
Isonychia	-	-	-	-	-	-	-	-	-	-	-	-	-	-
BAETIDAE	5	-	-	-	5	-	10	10	15	10	20	-	-	5
HEPTAGENIIDAE	5	-	-	-	-	-	-	-	-	-	-	-	-	-
LEPTOPHLEBIIDAE	-	-	-	-	-	-	-	-	-	-	-	-	-	-
EPHEMERELLIDAE	-	-	-	-	-	-	-	-	-	-	-	-	-	-
Caenis/Tricorythodes	-	-	-	-	-	-	-	-	-	-	-	-	-	-
PLECOPTERA	-	-	-	-	-	-	-	-	-	-	-	-	-	-
Psephenus	-	-	-	-	-	-	-	-	-	-	-	-	-	-
Optioservus	-	-	-	-	-	-	-	-	-	-	-	-	-	-
Promoresia	-	-	-	-	-	-	-	-	-	-	-	-	-	-
Stenelmis	5	-	-	10	5	-	5	5	10	15	-	40	35	5
PHILOPOTAMIDAE	-	-	-	-	-	-	-	40	10	-	-	-	-	-
HYDROPSYCHIDAE	10	-	-	50	20	-	40	20	20	10	15	10	35	10
HELICOPSYCHIDAE/ BRACHYCENTRIDAE/	-	-	-	-	-	-	-	-	-	-	-	-	-	-
RHYACOPHILIDAE	-	-	-	-	-	-	-	-	-	-	-	-	-	-
SIMULIIDAE	-	-	-	-	-	-	-	-	-	-	-	-	-	-
Simulium vittatum	-	-	-	-	-	-	20	10	-	20	-	-	-	5
EMPIDIDAE	-	5	-	-	-	-	-	-	-	-	-	-	-	-
CHIRONOMIDAE														
Tanypodinae	-	10	-	-	5	15	-	-	5	10	-	-	-	25
Cardiocladius	-	-	-	-	-	-	-	-	-	-	-	-	-	-
Cricotopus/ Orthocladius	5	10	20	-	5	10	5	5	15	10	25	10	5	10
Eukiefferiella/ Tvetenia	-	-	-	-	-	-	-	-	-	-	20	10	-	-
Parametricnemus	-	-	-	-	-	-	-	-	-	-	-	5	-	-
Chironomus	-	-	-	-	-	-	-	-	-	-	-	-	-	-
Polypedilum aviceps	-	-	-	-	-	-	-	-	-	-	-	-	-	-
Polypedilum (all others)	-	-	-	10	20	40	10	5	10	-	-	-	-	5
Tanytarsini	-	-	-	10	10	-	5	-	-	-	-	-	-	5
TOTAL	100	100	100	100	100	100	100	100	100	100	100	100	100	100

ISD Models (cont'd)

	SEWAGE EFFLUENT, ANIMAL WASTES									
	A	B	C	D	E	F	G	H	I	J
PLATYHELMINTHES	-	-	-	-	-	-	-	-	-	-
OLIGOCHAETA	5	35	15	10	10	35	40	10	20	15
HIRUDINEA	-	-	-	-	-	-	-	-	-	-
GASTROPODA	-	-	-	-	-	-	-	-	-	-
SPHAERIIDAE	-	-	-	10	-	-	-	-	-	-
ASELLIDAE	5	10	-	10	10	10	10	50	-	5
GAMMARIDAE	-	-	-	-	-	10	-	10	-	-
Isonychia	-	-	-	-	-	-	-	-	-	-
BAETIDAE	-	10	10	5	-	-	-	-	5	-
HEPTAGENIIDAE	10	10	10	-	-	-	-	-	-	-
LEPTOPHLEBIIDAE	-	-	-	-	-	-	-	-	-	-
EPHEMERELLIDAE	-	-	-	-	-	-	-	-	5	-
Caenis/Tricorythodes	-	-	-	-	-	-	-	-	-	-
PLECOPTERA	-	-	-	-	-	-	-	-	-	-
Psephenus	-	-	-	-	-	-	-	-	-	-
Optioservus	-	-	-	-	-	-	-	-	5	-
Promoresia	-	-	-	-	-	-	-	-	-	-
Stenelmis	15	-	10	10	-	-	-	-	-	-
PHILOPOTAMIDAE	-	-	-	-	-	-	-	-	-	-
HYDROPSYCHIDAE	45	-	10	10	10	-	-	10	5	-
HELICOPSYCHIDAE/ BRACHYCENTRIDAE/ RHYACOPHILIDAE	-	-	-	-	-	-	-	-	-	-
SIMULIIDAE	-	-	-	-	-	-	-	-	-	-
Simulium vittatum	-	-	-	25	10	35	-	-	5	5
EMPIDIDAE	-	-	-	-	-	-	-	-	-	-
CHIRONOMIDAE										
Tanypodinae	-	5	-	-	-	-	-	-	5	5
Cardiocladius	-	-	-	-	-	-	-	-	-	-
Cricotopus/ Orthocladus	-	10	15	-	-	10	10	-	5	5
Eukiefferiella/ Tvetenia	-	-	10	-	-	-	-	-	-	-
Parametrioctenemus	-	-	-	-	-	-	-	-	-	-
Chironomus	-	-	-	-	-	-	10	-	-	60
Polypedilum aviceps	-	-	-	-	-	-	-	-	-	-
Polypedilum (all others)	10	10	10	10	60	-	30	10	5	5
Tanytarsini	10	10	10	10	-	-	-	10	40	-
TOTAL	100	100	100	100	100	100	100	100	100	100

ISD Models (cont'd)

	SILTATION				
	A	B	C	D	E
PLATYHELMINTHES	-	-	-	-	-
OLIGOCHAETA	5	-	20	10	5
HIRUDINEA	-	-	-	-	-
GASTROPODA	-	-	-	-	-
SPHAERIIDAE	-	-	-	5	-
ASELLIDAE	-	-	-	-	-
GAMMARIDAE	-	-	-	10	-
Isonychia	-	-	-	-	-
BAETIDAE	-	10	20	5	-
HEPTAGENIIDAE	5	10	-	20	5
LEPTOPHLEBIIDAE	-	-	-	-	-
EPHEMERELLIDAE	-	-	-	-	-
Caenis/Tricorythodes	5	20	10	5	15
PLECOPTERA	-	-	-	-	-
Psephenus	-	-	-	-	-
Optioservus	5	10	-	-	-
Promoresia	-	-	-	-	-
Stenelmis	5	10	10	5	20
PHILOPOTAMIDAE	-	-	-	-	-
HYDROPSYCHIDAE	25	10	-	20	30
HELICOPSYCHIDAE/ BRACHYCENTRIDAE/ RHYACOPHILIDAE	-	-	-	-	-
SIMULIIDAE	5	10	-	-	5
EMPIDIDAE	-	-	-	-	-
CHIRONOMIDAE					
Tanypodinae	-	-	-	-	-
Cardiocladius	-	-	-	-	-
Cricotopus/ Orthocladius	25	-	10	5	5
Eukiefferiella/ Tvetenia	-	-	10	-	5
Parametrioctenus	-	-	-	-	-
Chironomus	-	-	-	-	-
Polypedilum aviceps	-	-	-	-	-
Polypedilum (all others)	10	10	10	5	5
Tanytarsini	10	10	10	10	5
TOTAL	100	100	100	100	100