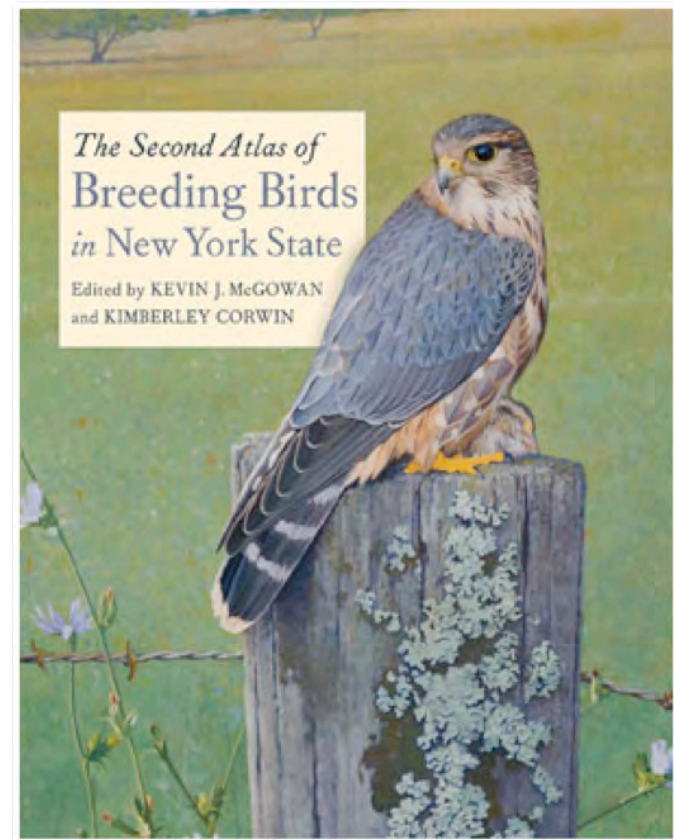


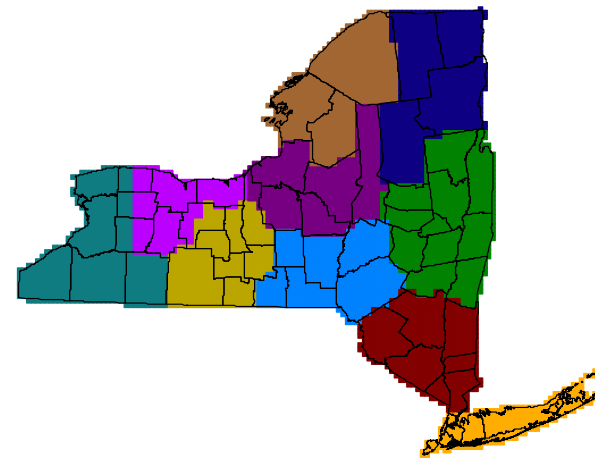
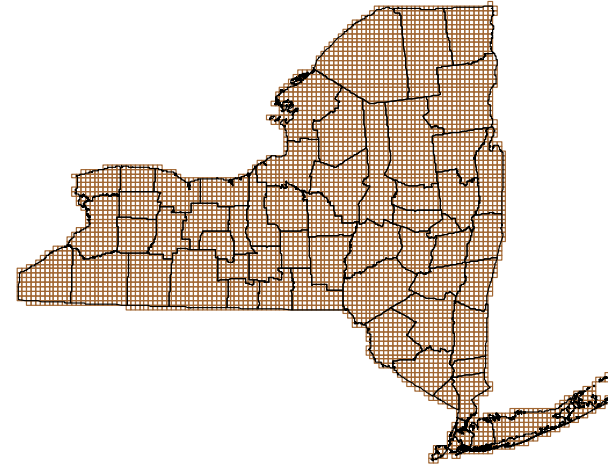
The Breeding Bird Atlas (BBA) of New York State

- The New York BBA provides a comprehensive guide to the geographical distribution of the breeding grounds of avian species
 - The 1st survey was conducted from 1980 to 1985
 - The 2nd survey was conducted from 2000 to 2005

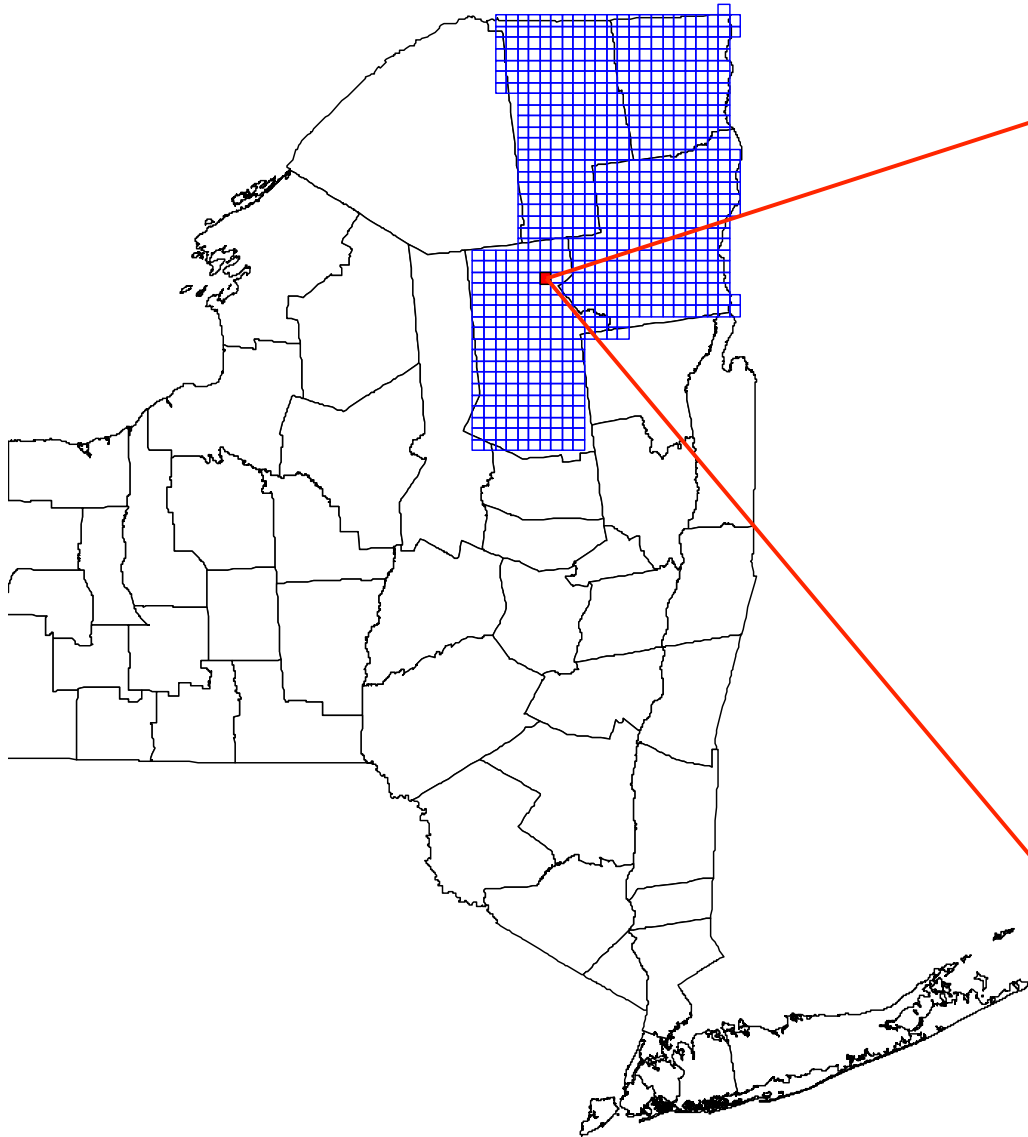


The Breeding Bird Atlas (BBA)

- State divided into about 1,300 squares of 49,576 square miles and assigned numbers
- Each square was split in four 5 km by 3 km blocks and lettered A through D
- State split into 10 regions with a regional coordinator delegated to organize and work with volunteers



Atlas Region 7: 690 blocks



Breeding Bird Atlas Block 5486A



Atlas Block 5486A

Breeding Bird Atlas (BBA) Protocol

- Asked to identify and record breeding status of the first 76 birds in a block

1980-85

- 1,100 observers
- 140,803 hours
- 361,000 records
- 245 species
- 12 blocks unvisited

2000-05

- 1,400 observers
- 155,000 hours
- 383,000 records
- 251 species
- 1 block unvisited



Breeding Status Codes

Possible

bird seen in likely habitat

Probable

territory, courtship, nest building

Confirmed

eggs, incubation, feeding young,
fledglings



Most Common Species

First Atlas

Song Sparrow

American Robin

Common Yellowthroat

Blue Jay

Black-capped Chickadee

Second Atlas

American Robin

Black-capped Chickadee

Blue Jay

Common Yellowthroat

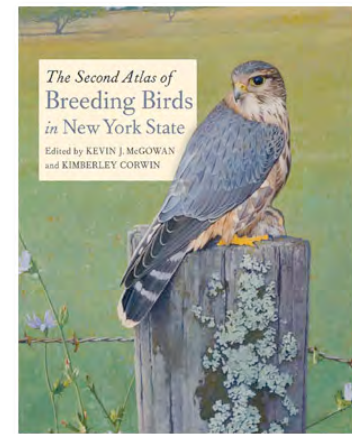
Song Sparrow



Access To BBA Data

- **In Print:**

McGowan, K.J., & Corwin, K. (2008). *The Second Atlas of Breeding Birds in New York State*. Ithaca, NY: Cornell University Press.



- **Online:**

New York State Department of Environmental Conservation website

- Online data and maps:

<http://www.dec.ny.gov/animals/51030.html>

- Downloadable data for Google Earth:

<http://www.dec.ny.gov/pubs/42978.html>



Using the Online Database

- BBA Database

Several options for looking at the data

- If the number of the block of interest is known, a species listing is available at the top

Breeding Bird Atlas - Species List

Species List Inquiry

Enter a block number to see the list of species that have been reported.
Choose from the 2nd or 1st atlas.

Block Number:
5770D

2nd Atlas: 2000-2005

1st Atlas: 1980-1985

Submit

Breeding Bird Atlas - Maps By Species

Species Distribution

Taxonomic Order	1980-1985	2000-2005
Alphabetic Order	1980-1985	2000-2005
Compare Maps	Taxonomic Order	Alphabetic Order

Breeding Bird Atlas - Atlas Block Maps

[Find An Atlas Block](#) [Field Map Application](#)

- Species distribution maps are available:
 - by year (1st atlas or 2nd)
 - by Taxonomic or Alphabetic species order
 - for comparison between first and second atlas
- Search for an atlas block on a topographic map

<http://www.dec.ny.gov/animals/51030.html>

Using the Online Database

- Google Earth

- BBA data can also be accessed through Google Earth
 - Google Earth Tutorial provided by DEC on right side of webpage.
 - Link to download Google Earth if needed
- Scroll down to find the BBA data for Google Earth
 - Split into 3 regions: Eastern & Southern NY, Northern NY, and Western & Central NY
 - To access the desired data set, click on the “Google Earth” symbol next to the title

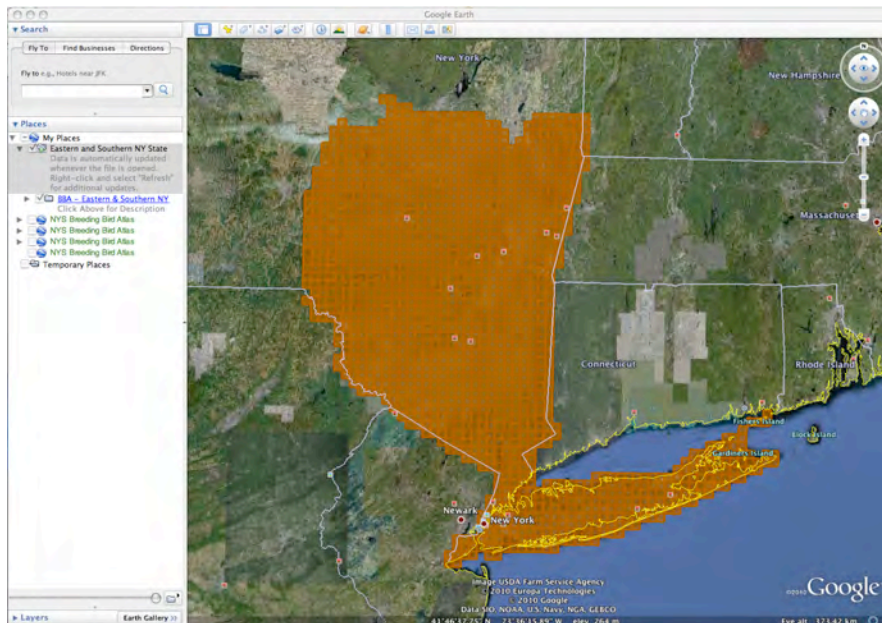
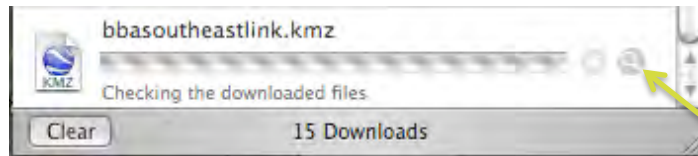
Environmental Maps

Data Set	Google Earth	Description
Breeding Bird Atlas: Eastern & Southern NY		This file shows lists of birds recorded in Eastern and Southern New York State (DEC Regions 1, 2, 3, and 4) during the 2000 - 2005 Breeding Bird Atlas Survey.
Breeding Bird Atlas: Northern NY		This file shows lists of birds recorded in Northern New York State (DEC Regions 5 and 6) during the 2000 - 2005 Breeding Bird Atlas Survey.
Breeding Bird Atlas: Western & Central NY		This file shows lists of birds recorded in Western and Central New York State (DEC Regions 7, 8, and 9) during the 2000 - 2005 Breeding Bird Atlas Survey.
Breeding Bird Atlas: Species Distributions		This file shows the statewide distributions of all bird species studied during the 2000 - 2005 Breeding Bird Atlas survey.

<http://www.dec.ny.gov/pubs/42978.html>

Using the Online Database

- Google Earth

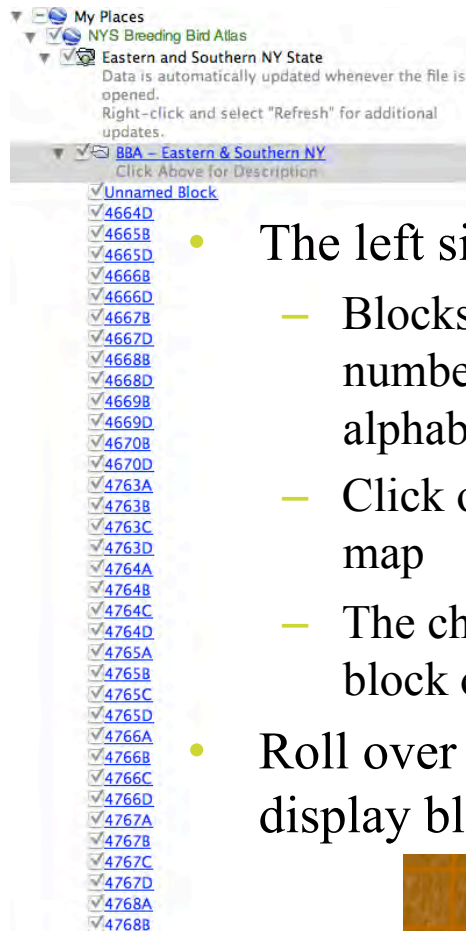


- The map will download as a zipped Keyhole Markup Language file (kmz)
- Locate the file and open it with Google Earth
- Upon opening the file, the map will automatically zoom to focus on the area of focus, in this case, Southern and Eastern New York

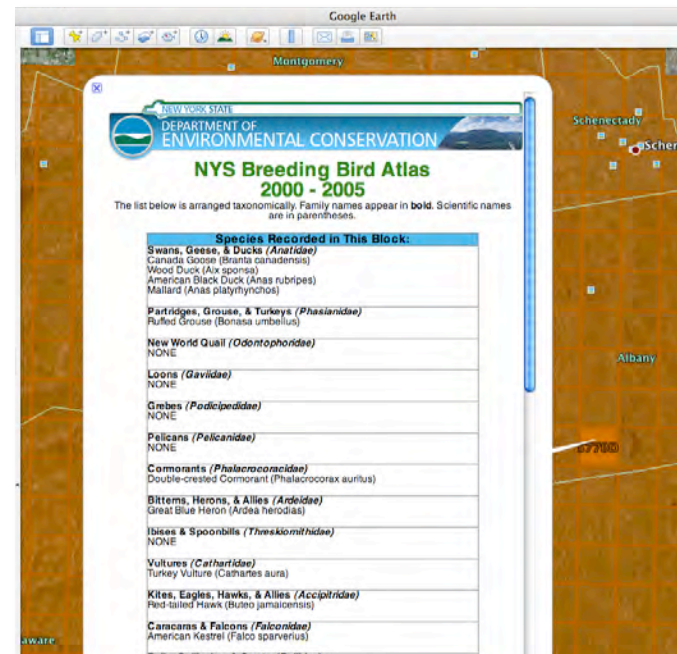
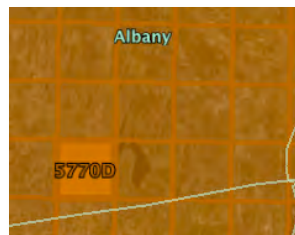
<http://www.dec.ny.gov/pubs/42978.html>

Using the Online Database

- Google Earth



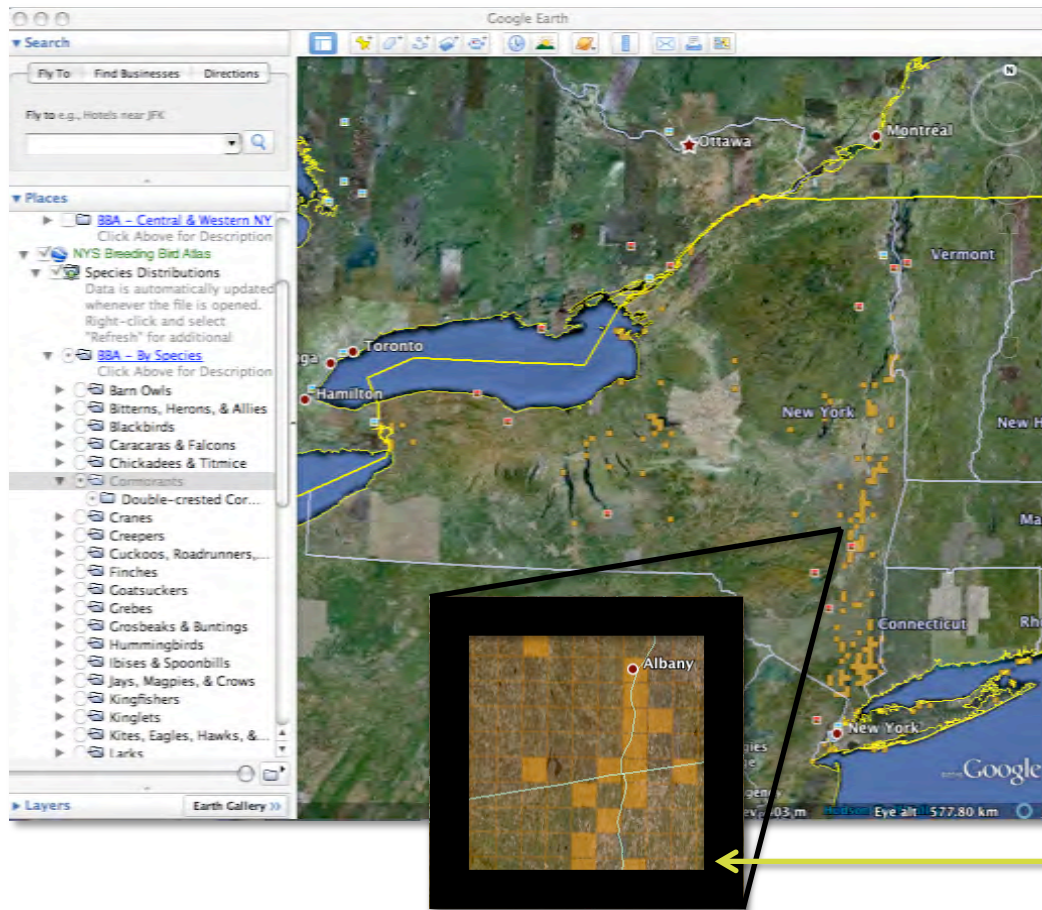
- The left sidebar lists each block
 - Blocks are categorized by number and then alphabetically
 - Click on a block to zoom in on map
 - The checkbox highlights the block orange
- Roll over the orange squares to display block number



- Click on any block on the map to access a list of species recorded in that block
- Open up all three Maps to cover the entire state

Using the Online Database

- Google Earth



- Open the Species Distribution Map to look at the distribution of individual bird species
 - Choose to view bird distribution by family or species
 - Zoom in on any point of the map to see distribution
- Use Species Distribution Map with the maps of bird listings to identify other species living near a species of interest