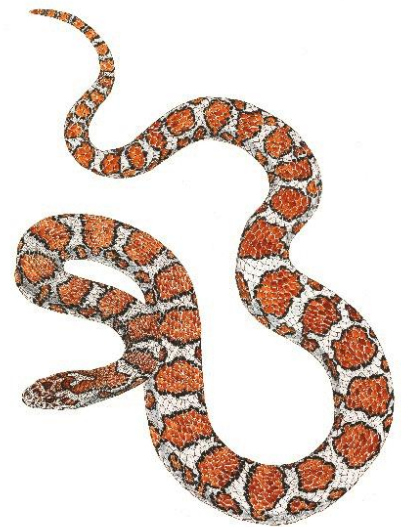


**CHECKLIST OF  
AMPHIBIANS, REPTILES, BIRDS AND MAMMALS  
OF NEW YORK STATE**

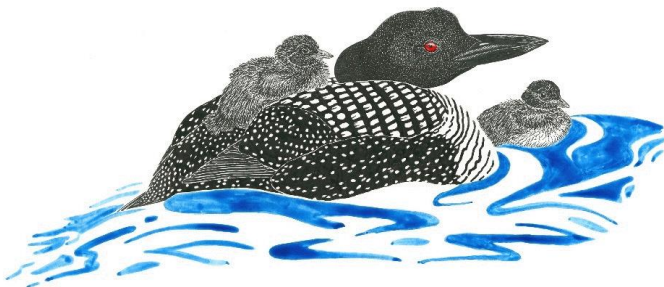
*Including Their Legal Status*



Moose



Eastern Milk Snake



Common Loon



Blue-spotted Salamander

Artwork by Jean Gawalt

New York State  
Department of Environmental Conservation  
Division of Fish and Wildlife  
February 2019



New York State Department of Environmental Conservation  
Division of Fish and Wildlife  
Wildlife Diversity Group  
625 Broadway  
Albany, New York 12233-4754

This web version is based upon an original hard copy version of *Checklist of the Amphibians, Reptiles, Birds and Mammals of New York, Including Their Protective Status* which was first published in 1985 and revised and reprinted in 1987. This version has had substantial revision in content and form.

First printing - 1985  
Second printing (rev.) - 1987  
Third revision - 2001  
Fourth revision - 2003  
Fifth revision - 2005  
Sixth revision - December 2005  
Seventh revision - November 2006  
Eighth revision - September 2007  
Ninth revision - April 2010  
Tenth revision – February 2019

## Introduction

The following list of amphibians (34 species), reptiles (38), birds (474) and mammals (93) indicates those vertebrate species believed to be part of the fauna of New York and the present legal status of these species in New York State. Common and scientific nomenclature is as according to: Crother (2008) for amphibians and reptiles; the American Ornithologists' Union (1983 and 2009) for birds; and Wilson and Reeder (2005) for mammals. Expected occurrence in New York State is based on: Conant and Collins (1991) for amphibians and reptiles; Levine (1998) and the New York State Ornithological Association (2009) for birds; and New York State Museum records for terrestrial mammals. Species are listed in taxonomic order, a system of arranging animals into related groups. Within this order, common groups have been identified for ease of reading (e.g. Woodpeckers, Turtles, etc.).

The following considerations were applied in compiling this checklist:

1. Gray wolf and lynx formerly existed in the State, but are now considered extirpated. Both species are included in this checklist under rarely encountered species because there are existing populations within dispersal distance of New York. Eastern cougar are extinct, but cougar are included on this list because of the potential for cougars dispersing from Midwest states to enter New York.
2. Introduced exotic species (deliberate or inadvertent) are listed if there are persistent records of their occurrence for at least ten years and if there is satisfactory evidence of the species maintaining a reasonably stable or increasing population through successful reproduction. In addition, several species native to North America but not previously considered native to New York State are included because they have become established or are now seen with some degree of regularity (see #3 below).
3. Museum records of "rare" occurrences for all species were omitted from this checklist (e.g. wolverine). Birds for which 10 or more records are known (Levine 1998) have been included. Inclusion of marine mammals was based on their occurrence within the 30-fathom limit. Some species of reptiles, birds and mammals are listed separately at the end of the checklist under **Rarely Encountered Species** because they are not considered regularly occurring components of New York's fauna. They are rare visitors to New York or infrequently occur within or near New York's coastal waters.
4. **This checklist is not meant to be a complete list of all species of wildlife protected under New York State law.** Invertebrates and fish, for instance, are not included on this checklist. It is meant to provide a list of species occurring in the state according to the parameters described above. In addition, New York State law protects all species designated as endangered or threatened by the U.S. Department of the Interior if they occur naturally in the state.

## Federal Definitions

- E** **Endangered Species** are determined by the U.S. Department of the Interior to be in danger of extinction throughout all or a significant portion of their range, as defined in the Endangered Species Act of 1973, and as amended. All such species are fully protected, including their habitat. Note that piping plover is designated End/Thr because it is listed as endangered in one portion of its range within New York State and threatened in another portion.
- T** **Threatened Species** are determined by the U.S. Department of the Interior as likely to become endangered within the foreseeable future throughout all or a significant portion of their range, as defined in the Endangered Species Act of 1973, and as amended. All such species are fully protected.
- MBTA** **Migratory Bird Treaty Act** of 1918, and as amended. The MBTA, including amendments, implements conventions between Canada, Mexico, the United States, Russia, and Japan for the protection of migratory birds.
- MMPA** **Marine Mammal Protection Act** of 1972, and as amended, was enacted for the protection, conservation, and management of all marine mammals to maintain the health and stability of the marine ecosystem.
- Un** **Unprotected** under Federal law.

### CA1, CA2, CA3

Indicates species listed in Appendices 1 or 2 under the **Convention on International Trade in Endangered Species (CITES)**, whose purpose is to protect certain species of flora and fauna against overexploitation in international trade. CITES lists species in three categories (appendices). Appendix 1 includes species threatened with extinction. Appendix 2 includes those species not currently endangered but which may become so if unrestricted trade occurs. Appendix 3 includes species identified by a country as needing protection. The appendices can be found on the CITES website at <https://www.cites.org/eng/disc/species.php>.

## State Definitions

- E** **Endangered Species** are determined by the New York State Department of Environmental Conservation (DEC) to be in imminent danger of extinction or extirpation in New York State, or are federally listed as endangered. All such species are fully protected under New York State ECL 11-0535.
- T** **Threatened Species** are determined by the DEC as likely to become endangered within the foreseeable future in New York State, or are federally listed as threatened. All such species are fully protected under the New York State ECL 11-0535.
- SC** **Special Concern Species** are those native species which are not yet recognized as endangered or threatened, but for which documented evidence exists relating to their continued welfare in New York State. Legislation passed 4 October 2005 gave Protected Wildlife status under ECL 11-0103 to all species listed as Special Concern. Special Concern species may also be protected under other laws.
- GS, GN** **Game** species are defined as “big game”, “small game”, or “game bird” species in ECL 11-0103. In the checklist, **GS** indicates that there are seasons set for the species when they may be legally hunted. **GN** indicates that, while classified under the law as a game species, there are no seasons set and the species may not be hunted or taken at any time in New York.
- PB** **Protected Birds** are defined in ECL 11-0103 as all wild birds except those named as unprotected. Some of these birds, such as waterfowl and gallinaceous birds, are also listed as game species with seasons set, while others may not be taken at any time.
- P** **Protected Wildlife** - species besides birds protected under ECL 11-0103. This now includes all Special Concern (SC) species.
- Un** **Unprotected** means that the species may be taken at any time without limit. However, a license to take may be required.
- SR** **Special Regulations** - This designation is used only for harbor seal. Protection for harbor seal comes via specific inclusion in ECL 11-0107.
- C** **Complex**- Jefferson and blue-spotted salamanders hybridize in some parts of the state and these hybrids are considered part of a “complex”. This complex is not counted as a separate species in this list.
- \*** **Non-native** species whether introduced or naturally established.

## References

- American Ornithologists' Union. 1998. *Check-list of North American birds, Seventh edition*. Lawrence, KS: Allen Press. 829 pp.
- American Ornithologists Union. 2018. Fifty-ninth supplement to the American Ornithologists' Union Check-list of North American Birds. *Auk* 135: 798-813.
- Conant, R. and J. T. Collins. 1991. *A field guide to reptiles and amphibians of eastern and central North America, Third Ed.* Boston: Houghton Mifflin Co. 450 pp.
- Connor, P. F. 1966. The mammals of the Tug Hill Plateau, New York. *New York State Museum and Science Service Bulletin No. 406*. Albany: State University of New York. 82 pp.
- Connor, P. F. 1971. The mammals of Long Island, New York. *New York State Museum and Science Service Bulletin No. 416*. Albany: State University of New York. 78 pp.
- Crother, B. I., ed. 2008. Scientific and standard English names of amphibians and reptiles of North America north of Mexico. *SSAR Herpetological Circular* 37: 1–84.
- Jones, J. K. Jr., D. C. Carter, H. H. Genoways, R. S. Hoffman and D. W. Rice. 1982. Revised checklist of North American mammals north of Mexico, 1982. *Occasional Papers No. 80*. Lubbock, TX: The Museum, Texas Tech. Univ. 22 pp.
- Koepfli, K.P., K.A. Deere, G.J. Slater, C. Begg, K. Begg, L. Grassman, M. Lucherini, G. Veron, and R.K. Wayne. 2008. Multigene phylogeny of the Mustelidae: Resolving relationships, tempo and biogeographic history of a mammalian adaptive radiation. *BMC Biology* 6:1-22.
- Leatherwood, S., D. K. Caldwell and H. E. Winn. 1976. Whales, dolphins and porpoises of the western North Atlantic. N.O.A.A. Tech. Rep. *National Marine Fisheries Serv. CIRC-396*. 176 pp.
- Levine, Emanuel, ed. 1998. *Bull's birds of New York State*. Ithaca, NY: Cornell University Press
- Newman, C. E., J. A. Fienberg, L. J. Rissler, J. Berger and H. Bradley Schaffer. 2012. A new species of leopard frog (Anura: Ranidae) from the urban northeastern US. *Molecular Phylogenetics and Evolution* 63:445–455.
- New York State Ornithological Association. 2018. *Checklist of the birds of New York State*. Available online at <https://nybirds.org/Publications/ChecklistNYS.htm>.
- Lagueux K, Wikgren B, Kenney RD. 2010. Technical report for the spatial characterization of marine turtles, mammals, and large pelagic fish to support coastal and marine spatial planning in New York, Prepared for Stone Environmental, Inc., and the State of New York's Ocean Planning and Coastal Management Program.

Whitaker, J. O., Jr. and W.J. Hamilton, Jr. 1998. *Mammals of the eastern United States, Third Edition*. Ithaca, NY: Cornell University Press.

Wilson, Don E. and Dee Ann M. Reeder, eds. 2005. *Mammal species of the world. A Taxonomic and Geographic Reference, Third ed.* Johns Hopkins University Press, 2,142 pp.

## AMPHIBIANS

COMMON NAME	SCIENTIFIC NAME	LEGAL STATUS	
		FEDERAL	STATE
<b>Hellbender, Mudpuppy and Salamanders</b>			
Hellbender	<i>Cryptobranchus alleganiensis</i>	Un	GN-SC
Common Mudpuppy	<i>Necturus maculosus</i>	Un	GN
Marbled Salamander	<i>Ambystoma opacum</i>	Un	GN-SC
Jefferson Salamander <sup>C</sup>	<i>Ambystoma jeffersonianum</i>	Un	GN-SC
Blue-spotted Salamander <sup>C</sup>	<i>Ambystoma laterale</i>	Un	GN-SC
Spotted Salamander	<i>Ambystoma maculatum</i>	Un	GN
Eastern Tiger Salamander	<i>Ambystoma tigrinum</i>	Un	GN-E
Eastern Red-spotted Newt	<i>Notophthalmus viridescens</i>	Un	GN
Northern Dusky Salamander	<i>Desmognathus fuscus</i>	Un	GN
Allegheny Mountain Dusky Salamander	<i>Desmognathus ochrophaeus</i>	Un	GN
Eastern Red-backed Salamander	<i>Plethodon cinereus</i>	Un	GN
Northern Slimy Salamander	<i>Plethodon glutinosus</i>	Un	GN
Wehrle's Salamander	<i>Plethodon wehrlei</i>	Un	GN
Four-toed Salamander	<i>Hemidactylium scutatum</i>	Un	GN
Northern Spring Salamander	<i>Gyrinophilus porphyriticus</i>	Un	GN
Northern Red Salamander	<i>Pseudotriton ruber</i>	Un	GN
Northern Two-lined Salamander	<i>Eurycea bislineata</i>	Un	GN
Long-tailed Salamander	<i>Eurycea longicauda</i>	Un	GN-SC

## Toads and Frogs

Eastern Spadefoot	<i>Scaphiopus holbrookii</i>	Un	GN-SC
Eastern American Toad	<i>Anaxyrus americanus</i>	Un	GS
Fowler's Toad	<i>Anaxyrus fowleri</i>	Un	GS
Eastern (Northern) Cricket Frog	<i>Acris crepitans</i>	Un	GN-E
Gray Treefrog	<i>Hyla versicolor</i>	Un	GS
Spring Peeper	<i>Pseudacris crucifer</i>	Un	GS
Boreal Chorus Frog	<i>Pseudacris maculata</i>	Un	GS
Western Chorus Frog	<i>Pseudacris triseriata</i>	Un	GS
American Bullfrog	<i>Lithobates catesbeianus</i>	Un	GS
Northern Green Frog	<i>Lithobates clamitans</i>	Un	GS
Mink Frog	<i>Lithobates septentrionalis</i>	Un	GS
Wood Frog	<i>Lithobates sylvaticus</i>	Un	GS
Atlantic Coast Leopard Frog	<i>Lithobates kauffeldi</i>	Un	GN-SC
Northern Leopard Frog	<i>Lithobates pipiens</i>	Un	GS
Southern Leopard Frog	<i>Lithobates sphenoccephala</i>	Un	GS-SC
Pickerel Frog	<i>Lithobates palustris</i>	Un	GS

E = Endangered  
T = Threatened  
SC = Special Concern  
Un = Unprotected

MBTA = Migratory Bird Treaty Act  
MMPA = Marine Mammal Protection Act  
P = Protected Wildlife  
PB = Protected Bird

GN = Game (No Season)  
GS = Game (Season Set)  
SR = Special Regulations  
C = Complex

CA1 = CITES Appendix 1  
CA2 = CITES Appendix 2  
CA3 = CITES Appendix 3  
\* = Non-native



## REPTILES

<u>COMMON NAME</u>	<u>SCIENTIFIC NAME</u>	<u>LEGAL STATUS</u>	
		<u>FEDERAL</u>	<u>STATE</u>
<b>Turtles</b>			
Snapping Turtle	<i>Chelydra serpentina</i>	Un	GS
Eastern Musk Turtle	<i>Sternotherus odoratus</i>	Un	GN
Eastern Mud Turtle	<i>Kinosternon subrubrum</i>	Un	GN-E
Spotted Turtle	<i>Clemmys guttata</i>	Un	GN-SC
Bog Turtle	<i>Glyptemys muhlenbergii</i>	T-CA1	GN-E
Wood Turtle	<i>Glyptemys insculpta</i>	Un-CA2	GN-SC
Eastern Box Turtle	<i>Terrapene carolina</i>	Un	GN-SC
Northern Diamond-backed Terrapin	<i>Malaclemys terrapin</i>	Un	GN
Northern Map Turtle	<i>Graptemys geographica</i>	Un	GN
Red-eared Slider*	<i>Trachemys scripta</i>	Un	GN
Painted Turtle	<i>Chrysemys picta</i>	Un	GN
Blanding's Turtle	<i>Emydoidea blandingii</i>	Un	GN-T
<b>Sea Turtles</b>			
Green Sea Turtle	<i>Chelonia mydas</i>	T-CA1	GN-T
Loggerhead Sea Turtle	<i>Caretta caretta</i>	T-CA1	GN-T
Kemp's Ridley Sea Turtle	<i>Lepidochelys kempii</i>	E-CA1	GN-E
Leatherback Sea Turtle	<i>Dermochelys coriacea</i>	E-CA1	GN-E
<b>Softshell Turtles</b>			
Eastern Spiny Softshell	<i>Apalone spinifera</i>	Un	GN-SC
<b>Lizards</b>			
Northern Fence Lizard	<i>Sceloporus undulatus</i>	Un	GN-T
Italian Wall Lizard*	<i>Podarcis sicula</i>	Un	Un
Common Five-lined Skink	<i>Plestiodon fasciatus</i>	Un	GN
Northern Coal Skink	<i>Plestiodon anthracinus</i>	Un	GN
<b>Snakes</b>			
Common Watersnake	<i>Nerodia sipedon</i>	Un	GN
Queensnake	<i>Regina septemvittata</i>	Un	GN-E
Northern Brownsnake	<i>Storeria dekayi</i>	Un	GN
Northern Red-bellied Snake	<i>Storeria occipitomaculata</i>	Un	GN
Eastern Gartersnake	<i>Thamnophis sirtalis</i>	Un	GN
Short-headed Gartersnake	<i>Thamnophis brachystoma</i>	Un	GN

E = Endangered  
T = Threatened  
SC = Special Concern  
Un = Unprotected

MBTA = Migratory Bird Treaty Act  
MMPA = Marine Mammal Protection Act  
P = Protected Wildlife  
PB = Protected Bird

GN = Game (No Season)  
GS = Game (Season Set)  
SR = Special Regulations  
C = Complex

CA1 = CITES Appendix 1  
CA2 = CITES Appendix 2  
CA3 = CITES Appendix 3  
\* = Non-native

## REPTILES

<u>COMMON NAME</u>	<u>SCIENTIFIC NAME</u>	<u>LEGAL STATUS</u>	
		<u>FEDERAL</u>	<u>STATE</u>
Common Ribbonsnake	<i>Thamnophis sauritus</i>	Un	GN
Eastern Hog-nosed Snake	<i>Heterodon platirhinos</i>	Un	GN-SC
Northern Ring-necked Snake	<i>Diadophis punctatus</i>	Un	GN
Eastern Wormsnake	<i>Carphophis amoenus</i>	Un	GN-SC
Northern Black Racer	<i>Coluber constrictor</i>	Un	GN
Smooth Greensnake	<i>Opheodrys vernalis</i>	Un	GN
Eastern Ratsnake	<i>Pantherophis alleghaniensis</i>	Un	GN
Eastern Milk Snake	<i>Lampropeltis triangulum</i>	Un	GN
Northern Copperhead	<i>Agkistrodon contortrix</i>	Un	GN
Eastern Massasauga	<i>Sistrurus catenatus</i>	Un	GN-E
Timber Rattlesnake	<i>Crotalus horridus</i>	Un	GN-T

E = Endangered  
 T = Threatened  
 SC = Special Concern  
 Un = Unprotected

MBTA = Migratory Bird Treaty Act  
 MMPA = Marine Mammal Protection Act  
 P = Protected Wildlife  
 PB = Protected Bird

GN = Game (No Season)  
 GS = Game (Season Set)  
 SR = Special Regulations  
 C = Complex

CA1 = CITES Appendix 1  
 CA2 = CITES Appendix 2  
 CA3 = CITES Appendix 3  
 \* = Non-native

# BIRDS

<u>COMMON NAME</u>	<u>SCIENTIFIC NAME</u>	<u>LEGAL STATUS</u>	
		<u>FEDERAL</u>	<u>STATE</u>
<b>Swans, Geese, and Ducks</b>			
Snow Goose	<i>Anser caerulescens</i>	MBTA	PB-GS
Brant	<i>Branta bernicla</i>	MBTA	PB-GS
Canada Goose	<i>Branta canadensis</i>	MBTA	PB-GS
Mute Swan*	<i>Cygnus olor</i>	Un	PB-GN
Trumpeter Swan	<i>Cygnus buccinators</i>	MBTA	PB-GN
Tundra Swan	<i>Cygnus columbianus</i>	MBTA	PB-GN
Wood Duck	<i>Aix sponsa</i>	MBTA	PB-GS
Blue-winged Teal	<i>Spatula discors</i>	MBTA	PB-GS
Northern Shoveler	<i>Spatula clypeata</i>	MBTA	PB-GS
Gadwall	<i>Mareca strepera</i>	MBTA	PB-GS
Eurasian Wigeon*	<i>Mareca penelope</i>	MBTA	PB-GS
American Wigeon	<i>Mareca americana</i>	MBTA	PB-GS
Mallard	<i>Anas platyrhynchos</i>	MBTA	PB-GS
American Black Duck	<i>Anas rubripes</i>	MBTA	PB-GS
Northern Pintail	<i>Anas acuta</i>	MBTA	PB-GS
Green-winged Teal	<i>Anas crecca</i>	MBTA	PB-GS
Canvasback	<i>Aythya valisineria</i>	MBTA	PB-GS
Redhead	<i>Aythya americana</i>	MBTA	PB-GS
Ring-necked Duck	<i>Aythya collaris</i>	MBTA	PB-GS
Greater Scaup	<i>Aythya marila</i>	MBTA	PB-GS
Lesser Scaup	<i>Aythya affinis</i>	MBTA	PB-GS
King Eider	<i>Somateria spectabilis</i>	MBTA	PB-GS
Common Eider	<i>Somateria mollissima</i>	MBTA	PB-GS
Harlequin Duck	<i>Histrionicus histrionicus</i>	MBTA	PB-GN
Surf Scoter	<i>Melanitta perspicillata</i>	MBTA	PB-GS
White-winged Scoter	<i>Melanitta fusca</i>	MBTA	PB-GS
Black Scoter	<i>Melanitta americana</i>	MBTA	PB-GS
Long-tailed Duck	<i>Clangula hyemalis</i>	MBTA	PB-GS
Bufflehead	<i>Bucephala albeola</i>	MBTA	PB-GS
Common Goldeneye	<i>Bucephala clangula</i>	MBTA	PB-GS
Barrow's Goldeneye	<i>Bucephala islandica</i>	MBTA	PB-GS
Hooded Merganser	<i>Lophodytes cucullatus</i>	MBTA	PB-GS
Common Merganser	<i>Mergus merganser</i>	MBTA	PB-GS
Red-breasted Merganser	<i>Mergus serrator</i>	MBTA	PB-GS
Ruddy Duck	<i>Oxyura jamaicensis</i>	MBTA	PB-GS

## Quail

Northern Bobwhite	<i>Colinus virginianus</i>	Un	PB-GS
-------------------	----------------------------	----	-------

E = Endangered  
 T = Threatened  
 SC = Special Concern  
 Un = Unprotected

MBTA = Migratory Bird Treaty Act  
 MMPA = Marine Mammal Protection Act  
 P = Protected Wildlife  
 PB = Protected Bird

GN = Game (No Season)  
 GS = Game (Season Set)  
 SR = Special Regulations  
 C = Complex

CA1 = CITES Appendix 1  
 CA2 = CITES Appendix 2  
 CA3 = CITES Appendix 3  
 \* = Non-native

## BIRDS (cont.)

<u>COMMON NAME</u>	<u>SCIENTIFIC NAME</u>	<u>LEGAL STATUS</u>	
		<u>FEDERAL</u>	<u>STATE</u>
<b>Partridges, Grouse, and Turkeys</b>			
Gray Partridge*	<i>Perdix perdix</i>	Un	PB-GN
Ring-necked Pheasant*	<i>Phasianus colchicus</i>	Un	PB-GS
Ruffed Grouse	<i>Bonasa umbellus</i>	Un	PB-GS
Spruce Grouse	<i>Falcapennis canadensis</i>	Un	PB-GN-E
Wild Turkey	<i>Meleagris gallopavo</i>	Un	PB-GS
<b>Grebes</b>			
Pied-billed Grebe	<i>Podilymbus podiceps</i>	MBTA	PB-T
Horned Grebe	<i>Podiceps auritus</i>	MBTA	PB
Red-necked Grebe	<i>Podiceps grisegena</i>	MBTA	PB
Eared Grebe	<i>Podiceps nigricollis</i>	MBTA	PB
<b>Pigeons and Doves</b>			
Rock Pigeon*	<i>Columba livia</i>	Un	Un
Mourning Dove	<i>Zenaida macroura</i>	MBTA	PB
<b>Cuckoos</b>			
Yellow-billed Cuckoo	<i>Coccyzus americanus</i>	MBTA	PB
Black-billed Cuckoo	<i>Coccyzus erythrophthalmus</i>	MBTA	PB
<b>Nightjars</b>			
Common Nighthawk	<i>Chordeiles minor</i>	MBTA	PB-SC
Chuck-will's-widow	<i>Antrostomus carolinensis</i>	MBTA	PB
Eastern Whip-poor-will	<i>Antrostomus vociferus</i>	MBTA	PB-SC
<b>Swifts</b>			
Chimney Swift	<i>Chaetura pelagica</i>	MBTA	PB
<b>Hummingbirds</b>			
Ruby-throated Hummingbird	<i>Archilochus colubris</i>	MBTA-CA2	PB
<b>Rails, Gallinules, and Coots</b>			
Yellow Rail	<i>Coturnicops noveboracensis</i>	MBTA	PB-GN
Black Rail	<i>Laterallus jamaicensis</i>	MBTA-T	PB-GN-E
Clapper Rail	<i>Rallus crepitans</i>	MBTA	PB-GN
King Rail	<i>Rallus elegans</i>	MBTA	PB-GN-T

E = Endangered  
T = Threatened  
SC = Special Concern  
Un = Unprotected

MBTA = Migratory Bird Treaty Act  
MMPA = Marine Mammal Protection Act  
P = Protected Wildlife  
PB = Protected Bird

GN = Game (No Season)  
GS = Game (Season Set)  
SR = Special Regulations  
C = Complex

CA1 = CITES Appendix 1  
CA2 = CITES Appendix 2  
CA3 = CITES Appendix 3  
\* = Non-native

## BIRDS (cont.)

<u>COMMON NAME</u>	<u>SCIENTIFIC NAME</u>	<u>LEGAL STATUS</u>	
		<u>FEDERAL</u>	<u>STATE</u>
Virginia Rail	<i>Rallus limicola</i>	MBTA	PB-GS
Sora	<i>Porzana carolina</i>	MBTA	PB-GS
Purple Gallinule	<i>Porphyrio martinicus</i>	MBTA	PB-GS
Common Gallinule	<i>Gallinula galeata</i>	MBTA	PB-GS
American Coot	<i>Fulica americana</i>	MBTA	PB-GS
<b>Oystercatchers</b>			
American Oystercatcher	<i>Haematopus palliatus</i>	MBTA	PB-GN
<b>Plovers</b>			
Black-bellied Plover	<i>Pluvialis squatarola</i>	MBTA	PB-GN
American Golden-Plover	<i>Pluvialis dominica</i>	MBTA	PB-GN
Semipalmated Plover	<i>Charadrius semipalmatus</i>	MBTA	PB-GN
Piping Plover	<i>Charadrius melodus</i>	MBTA-E/T	PB-GN-E
Killdeer	<i>Charadrius vociferus</i>	MBTA	PB-GN
<b>Sandpipers</b>			
Upland Sandpiper	<i>Bartramia longicauda</i>	MBTA	PB-GN-T
Whimbrel	<i>Numenius phaeopus</i>	MBTA	PB-GN
Hudsonian Godwit	<i>Limosa haemastica</i>	MBTA	PB-GN
Marbled Godwit	<i>Limosa fedoa</i>	MBTA	PB-GN
Ruddy Turnstone	<i>Arenaria interpres</i>	MBTA	PB-GN
Red Knot	<i>Calidris canutus</i>	MBTA-T	PB-GN-T
Ruff	<i>Calidris pugnax</i>	MBTA	PB-GN
Stilt Sandpiper	<i>Calidris himantopus</i>	MBTA	PB-GN
Sanderling	<i>Calidris alba</i>	MBTA	PB-GN
Dunlin	<i>Calidris alpina</i>	MBTA	PB-GN
Purple Sandpiper	<i>Calidris maritima</i>	MBTA	PB-GN
Baird's Sandpiper	<i>Calidris bairdii</i>	MBTA	PB-GN
Least Sandpiper	<i>Calidris minutilla</i>	MBTA	PB-GN
White-rumped Sandpiper	<i>Calidris fuscicollis</i>	MBTA	PB-GN
Buff-breasted Sandpiper	<i>Calidris subruficollis</i>	MBTA	PB-GN
Pectoral Sandpiper	<i>Calidris melanotos</i>	MBTA	PB-GN
Semipalmated Sandpiper	<i>Calidris pusilla</i>	MBTA	PB-GN
Western Sandpiper	<i>Calidris mauri</i>	MBTA	PB-GN
Short-billed Dowitcher	<i>Limnodromus griseus</i>	MBTA	PB-GN
Long-billed Dowitcher	<i>Limnodromus scolopaceus</i>	MBTA	PB-GN
American Woodcock	<i>Scolopax minor</i>	MBTA	PB-GS
Wilson's Snipe	<i>Gallinago delicata</i>	MBTA	PB-GS
Spotted Sandpiper	<i>Actitis macularius</i>	MBTA	PB-GN

E = Endangered  
T = Threatened  
SC = Special Concern  
Un = Unprotected

MBTA = Migratory Bird Treaty Act  
MMPA = Marine Mammal Protection Act  
P = Protected Wildlife  
PB = Protected Bird

GN = Game (No Season)  
GS = Game (Season Set)  
SR = Special Regulations  
C = Complex

CA1 = CITES Appendix 1  
CA2 = CITES Appendix 2  
CA3 = CITES Appendix 3  
\* = Non-native

## BIRDS (cont.)

<u>COMMON NAME</u>	<u>SCIENTIFIC NAME</u>	<u>LEGAL STATUS</u>	
		<u>FEDERAL</u>	<u>STATE</u>
Solitary Sandpiper	<i>Tringa solitaria</i>	MBTA	PB-GN
Lesser Yellowlegs	<i>Tringa flavipes</i>	MBTA	PB-GN
Willet	<i>Tringa semipalmata</i>	MBTA	PB-GN
Greater Yellowlegs	<i>Tringa melanoleuca</i>	MBTA	PB-GN
Wilson's Phalarope	<i>Phalaropus tricolor</i>	MBTA	PB-GN
Red-necked Phalarope	<i>Phalaropus lobatus</i>	MBTA	PB-GN
Red Phalarope	<i>Phalaropus fulicarius</i>	MBTA	PB-GN

### Jaegers

Pomarine Jaeger	<i>Stercorarius pomarinus</i>	MBTA	PB
Parasitic Jaeger	<i>Stercorarius parasiticus</i>	MBTA	PB

### Murres, Puffins, and Allies

Dovekie	<i>Alle alle</i>	MBTA	PB
Razorbill	<i>Alca torda</i>	MBTA	PB

### Gulls, Terns, and Skimmers

Black-legged Kittiwake	<i>Rissa tridactyla</i>	MBTA	PB
Bonaparte's Gull	<i>Chroicocephalus philadelphia</i>	MBTA	PB
Black-headed Gull	<i>Chroicocephalus ridibundus</i>	MBTA	PB
Little Gull	<i>Hydrocoloeus minutus</i>	MBTA	PB
Laughing Gull	<i>Leucophaeus atricilla</i>	MBTA	PB
Franklin's Gull	<i>Leucophaeus pipixcan</i>	MBTA	PB
Ring-billed Gull	<i>Larus delawarensis</i>	MBTA	PB
Herring Gull	<i>Larus argentatus</i>	MBTA	PB
Iceland Gull	<i>Larus glaucoides</i>	MBTA	PB
Lesser Black-backed Gull	<i>Larus fuscus</i>	MBTA	PB
Glaucous Gull	<i>Larus hyperboreus</i>	MBTA	PB
Great Black-backed Gull	<i>Larus marinus</i>	MBTA	PB
Least Tern	<i>Sternula antillarum</i>	MBTA	PB-T
Gull-billed Tern	<i>Gelochelidon nilotica</i>	MBTA	PB
Caspian Tern	<i>Hydroprogne caspia</i>	MBTA	PB
Black Tern	<i>Chlidonias niger</i>	MBTA	PB-E
Roseate Tern	<i>Sterna dougallii</i>	MBTA-E	PB-E
Common Tern	<i>Sterna hirundo</i>	MBTA	PB-T
Forster's Tern	<i>Sterna forsteri</i>	MBTA	PB
Royal Tern	<i>Thalasseus maximus</i>	MBTA	PB
Sandwich Tern	<i>Thalasseus sandvicensis</i>	MBTA	PB
Black Skimmer	<i>Rynchops niger</i>	MBTA	PB-SC

E = Endangered  
 T = Threatened  
 SC = Special Concern  
 Un = Unprotected

MBTA = Migratory Bird Treaty Act  
 MMPA = Marine Mammal Protection Act  
 P = Protected Wildlife  
 PB = Protected Bird

GN = Game (No Season)  
 GS = Game (Season Set)  
 SR = Special Regulations  
 C = Complex

CA1 = CITES Appendix 1  
 CA2 = CITES Appendix 2  
 CA3 = CITES Appendix 3  
 \* = Non-native

## BIRDS (cont.)

<u>COMMON NAME</u>	<u>SCIENTIFIC NAME</u>	<u>LEGAL STATUS</u>	
		<u>FEDERAL</u>	<u>STATE</u>
<b>Loons</b>			
Red-throated Loon	<i>Gavia stellata</i>	MBTA	PB
Common Loon	<i>Gavia immer</i>	MBTA	PB-SC
<b>Storm-Petrels</b>			
Wilson's Storm-Petrel	<i>Oceanites oceanicus</i>	MBTA	PB
<b>Shearwaters and Petrels</b>			
Northern Fulmar	<i>Fulmarus glacialis</i>	MBTA	PB
Cory's Shearwater	<i>Calonectris diomedea</i>	MBTA	PB
Sooty Shearwater	<i>Ardenna grisea</i>	MBTA	PB
Great Shearwater	<i>Ardenna gravis</i>	MBTA	PB
Manx Shearwater	<i>Puffinus puffinus</i>	MBTA-T	PB
<b>Gannets</b>			
Northern Gannet	<i>Morus bassanus</i>	MBTA	PB
<b>Cormorants</b>			
Double-crested Cormorant	<i>Phalacrocorax auritus</i>	MBTA	PB
<b>Pelicans</b>			
American White Pelican	<i>Pelecanus erythrorhynchos</i>	MBTA	PB
Brown Pelican	<i>Pelecanus occidentalis</i>	MBTA	PB
<b>Bitterns, Herons, and Egrets</b>			
American Bittern	<i>Botaurus lentiginosus</i>	MBTA	PB-SC
Least Bittern	<i>Ixobrychus exilis</i>	MBTA	PB-T
Great Blue Heron	<i>Ardea herodias</i>	MBTA	PB
Great Egret	<i>Ardea alba</i>	MBTA	PB
Snowy Egret	<i>Egretta thula</i>	MBTA	PB
Little Blue Heron	<i>Egretta caerulea</i>	MBTA	PB
Tricolored Heron	<i>Egretta tricolor</i>	MBTA	PB
Cattle Egret*	<i>Bubulcus ibis</i>	MBTA	PB
Green Heron	<i>Butorides virescens</i>	MBTA	PB
Black-crowned Night-Heron	<i>Nycticorax nycticorax</i>	MBTA	PB
Yellow-crowned Night-Heron	<i>Nyctanassa violacea</i>	MBTA	PB

E = Endangered  
T = Threatened  
SC = Special Concern  
Un = Unprotected

MBTA = Migratory Bird Treaty Act  
MMPA = Marine Mammal Protection Act  
P = Protected Wildlife  
PB = Protected Bird

GN = Game (No Season)  
GS = Game (Season Set)  
SR = Special Regulations  
C = Complex

CA1 = CITES Appendix 1  
CA2 = CITES Appendix 2  
CA3 = CITES Appendix 3  
\* = Non-native

## BIRDS (cont.)

<u>COMMON NAME</u>	<u>SCIENTIFIC NAME</u>	<u>LEGAL STATUS</u>	
		<u>FEDERAL</u>	<u>STATE</u>
<b>Ibises</b>			
Glossy Ibis	<i>Plegadis falcinellus</i>	MBTA	PB
<b>Vultures</b>			
Black Vulture	<i>Coragyps atratus</i>	MBTA	PB
Turkey Vulture	<i>Cathartes aura</i>	MBTA	PB
<b>Osprey</b>			
Osprey	<i>Pandion haliaetus</i>	MBTA-CA2	PB-SC
<b>Eagles and Hawks</b>			
Golden Eagle	<i>Aquila chrysaetos</i>	MBTA-CA2	PB-E
Northern Harrier	<i>Circus hudsonius</i>	MBTA-CA2	PB-T
Sharp-shinned Hawk	<i>Accipiter striatus</i>	MBTA-CA2	PB-SC
Cooper's Hawk	<i>Accipiter cooperii</i>	MBTA-CA2	PB-SC
Northern Goshawk	<i>Accipiter gentilis</i>	MBTA-CA2	PB-SC
Bald Eagle	<i>Haliaeetus leucocephalus</i>	MBTA-T-CA2	PB-T
Red-shouldered Hawk	<i>Buteo lineatus</i>	MBTA-CA2	PB-SC
Broad-winged Hawk	<i>Buteo platypterus</i>	MBTA-CA2	PB
Red-tailed Hawk	<i>Buteo jamaicensis</i>	MBTA-CA2	PB
Rough-legged Hawk	<i>Buteo lagopus</i>	MBTA-CA2	PB
<b>Barn Owls</b>			
Barn Owl	<i>Tyto alba</i>	MBTA-CA2	PB
<b>True Owls</b>			
Eastern Screech-Owl	<i>Megascops asio</i>	MBTA-CA2	PB
Great Horned Owl	<i>Bubo virginianus</i>	MBTA-CA2	PB
Snowy Owl	<i>Bubo scandiacus</i>	MBTA-CA2	PB
Barred Owl	<i>Strix varia</i>	MBTA-CA2	PB
Long-eared Owl	<i>Asio otus</i>	MBTA-CA2	PB
Short-eared Owl	<i>Asio flammeus</i>	MBTA-CA2	PB-E
Northern Saw-whet Owl	<i>Aegolius acadicus</i>	MBTA-CA2	PB
<b>Kingfishers</b>			
Belted Kingfisher	<i>Megaceryle alcyon</i>	MBTA	PB

E = Endangered  
T = Threatened  
SC = Special Concern  
Un = Unprotected

MBTA = Migratory Bird Treaty Act  
MMPA = Marine Mammal Protection Act  
P = Protected Wildlife  
PB = Protected Bird

GN = Game (No Season)  
GS = Game (Season Set)  
SR = Special Regulations  
C = Complex

CA1 = CITES Appendix 1  
CA2 = CITES Appendix 2  
CA3 = CITES Appendix 3  
\* = Non-native



## BIRDS (cont.)

<u>COMMON NAME</u>	<u>SCIENTIFIC NAME</u>	<u>LEGAL STATUS</u>	
		<u>FEDERAL</u>	<u>STATE</u>
<b>Woodpeckers</b>			
Red-headed Woodpecker	<i>Melanerpes erythrocephalus</i>	MBTA	PB-SC
Red-bellied Woodpecker	<i>Melanerpes carolinus</i>	MBTA	PB
Yellow-bellied Sapsucker	<i>Sphyrapicus varius</i>	MBTA	PB
American Three-toed Woodpecker	<i>Picoides dorsalis</i>	MBTA	PB
Black-backed Woodpecker	<i>Picoides arcticus</i>	MBTA	PB
Downy Woodpecker	<i>Dryobates pubescens</i>	MBTA	PB
Hairy Woodpecker	<i>Dryobates villosus</i>	MBTA	PB
Northern Flicker	<i>Colaptes auratus</i>	MBTA	PB
Pileated Woodpecker	<i>Dryocopus pileatus</i>	MBTA	PB
<b>Falcons</b>			
American Kestrel	<i>Falco sparverius</i>	MBTA-CA2	PB
Merlin	<i>Falco columbarius</i>	MBTA-CA2	PB
Peregrine Falcon	<i>Falco peregrinus</i>	MBTA-CA1	PB-E
<b>Parrots</b>			
Monk Parakeet*	<i>Myiopsitta monachus</i>	Un-CA2	Un
<b>Flycatchers</b>			
Great Crested Flycatcher	<i>Myiarchus crinitus</i>	MBTA	PB
Western Kingbird	<i>Tyrannus verticalis</i>	MBTA	PB
Eastern Kingbird	<i>Tyrannus tyrannus</i>	MBTA	PB
Olive-sided Flycatcher	<i>Contopus cooperi</i>	MBTA	PB
Eastern Wood-Pewee	<i>Contopus virens</i>	MBTA	PB
Yellow-bellied Flycatcher	<i>Empidonax flaviventris</i>	MBTA	PB
Acadian Flycatcher	<i>Empidonax virescens</i>	MBTA	PB
Alder Flycatcher	<i>Empidonax alnorum</i>	MBTA	PB
Willow Flycatcher	<i>Empidonax traillii</i>	MBTA	PB
Least Flycatcher	<i>Empidonax minimus</i>	MBTA	PB
Eastern Phoebe	<i>Sayornis phoebe</i>	MBTA	PB
<b>Shrikes</b>			
Loggerhead Shrike	<i>Lanius ludovicianus</i>	MBTA	PB-E
Northern Shrike	<i>Lanius borealis</i>	MBTA	PB

E = Endangered  
T = Threatened  
SC = Special Concern  
Un = Unprotected

MBTA = Migratory Bird Treaty Act  
MMPA = Marine Mammal Protection Act  
P = Protected Wildlife  
PB = Protected Bird

GN = Game (No Season)  
GS = Game (Season Set)  
SR = Special Regulations  
C = Complex

CA1 = CITES Appendix 1  
CA2 = CITES Appendix 2  
CA3 = CITES Appendix 3  
\* = Non-native

## BIRDS (cont.)

<u>COMMON NAME</u>	<u>SCIENTIFIC NAME</u>	<u>LEGAL STATUS</u>	
		<u>FEDERAL</u>	<u>STATE</u>
<b>Vireos</b>			
White-eyed Vireo	<i>Vireo griseus</i>	MBTA	PB
Yellow-throated Vireo	<i>Vireo flavifrons</i>	MBTA	PB
Blue-headed Vireo	<i>Vireo solitarius</i>	MBTA	PB
Philadelphia Vireo	<i>Vireo philadelphicus</i>	MBTA	PB
Warbling Vireo	<i>Vireo gilvus</i>	MBTA	PB
Red-eyed Vireo	<i>Vireo olivaceus</i>	MBTA	PB
<b>Jays, Crows, and Ravens</b>			
Canada Jay	<i>Perisoreus canadensis</i>	MBTA	PB-GN
Blue Jay	<i>Cyanocitta cristata</i>	MBTA	PB-GN
American Crow	<i>Corvus brachyrhynchos</i>	MBTA	PB-GS
Fish Crow	<i>Corvus ossifragus</i>	MBTA	PB-GS
Common Raven	<i>Corvus corax</i>	MBTA	PB-GN
<b>Larks</b>			
Horned Lark	<i>Eremophila alpestris</i>	MBTA	PB-SC
<b>Martins and Swallows</b>			
Purple Martin	<i>Progne subis</i>	MBTA	PB
Tree Swallow	<i>Tachycineta bicolor</i>	MBTA	PB
Northern Rough-winged Swallow	<i>Stelgidopteryx serripennis</i>	MBTA	PB
Bank Swallow	<i>Riparia riparia</i>	MBTA	PB
Cliff Swallow	<i>Petrochelidon pyrrhonota</i>	MBTA	PB
Barn Swallow	<i>Hirundo rustica</i>	MBTA	PB
<b>Chickadees and Titmice</b>			
Black-capped Chickadee	<i>Poecile atricapillus</i>	MBTA	PB
Boreal Chickadee	<i>Poecile hudsonicus</i>	MBTA	PB
Tufted Titmouse	<i>Baeolophus bicolor</i>	MBTA	PB
<b>Nuthatches</b>			
Red-breasted Nuthatch	<i>Sitta canadensis</i>	MBTA	PB
White-breasted Nuthatch	<i>Sitta carolinensis</i>	MBTA	PB
<b>Creepers</b>			
Brown Creeper	<i>Certhia americana</i>	MBTA	PB

E = Endangered  
 T = Threatened  
 SC = Special Concern  
 Un = Unprotected

MBTA = Migratory Bird Treaty Act  
 MMPA = Marine Mammal Protection Act  
 P = Protected Wildlife  
 PB = Protected Bird

GN = Game (No Season)  
 GS = Game (Season Set)  
 SR = Special Regulations  
 C = Complex

CA1 = CITES Appendix 1  
 CA2 = CITES Appendix 2  
 CA3 = CITES Appendix 3  
 \* = Non-native

## BIRDS (cont.)

<u>COMMON NAME</u>	<u>SCIENTIFIC NAME</u>	<u>LEGAL STATUS</u>	
		<u>FEDERAL</u>	<u>STATE</u>
<b>Wrens</b>			
House Wren	<i>Troglodytes aedon</i>	MBTA	PB
Winter Wren	<i>Troglodytes hiemalis</i>	MBTA	PB
Sedge Wren	<i>Cistothorus platensis</i>	MBTA	PB-T
Marsh Wren	<i>Cistothorus palustris</i>	MBTA	PB
Carolina Wren	<i>Thryothorus ludovicianus</i>	MBTA	PB
<b>Gnatcatchers</b>			
Blue-gray Gnatcatcher	<i>Polioptila caerulea</i>	MBTA	PB
<b>Kinglets</b>			
Golden-crowned Kinglet	<i>Regulus satrapa</i>	MBTA	PB
Ruby-crowned Kinglet	<i>Regulus calendula</i>	MBTA	PB
<b>Thrushes</b>			
Eastern Bluebird	<i>Sialia sialis</i>	MBTA	PB
Veery	<i>Catharus fuscescens</i>	MBTA	PB
Gray-cheeked Thrush	<i>Catharus minimus</i>	MBTA	PB
Bicknell's Thrush	<i>Catharus bicknelli</i>	MBTA	PB-SC
Swainson's Thrush	<i>Catharus ustulatus</i>	MBTA	PB
Hermit Thrush	<i>Catharus guttatus</i>	MBTA	PB
Wood Thrush	<i>Hylocichla mustelina</i>	MBTA	PB
American Robin	<i>Turdus migratorius</i>	MBTA	PB
<b>Mockingbirds and Thrashers</b>			
Gray Catbird	<i>Dumetella carolinensis</i>	MBTA	PB
Brown Thrasher	<i>Toxostoma rufum</i>	MBTA	PB
Northern Mockingbird	<i>Mimus polyglottos</i>	MBTA	PB
<b>Starlings</b>			
European Starling*	<i>Sturnus vulgaris</i>	Un	Un
<b>Waxwings</b>			
Bohemian Waxwing	<i>Bombycilla garrulus</i>	MBTA	PB
Cedar Waxwing	<i>Bombycilla cedrorum</i>	MBTA	PB
<b>Old World Sparrows</b>			
House Sparrow*	<i>Passer domesticus</i>	Un	Un

E = Endangered

T = Threatened

SC = Special Concern

Un = Unprotected

MBTA = Migratory Bird Treaty Act

MMPA = Marine Mammal Protection Act

P = Protected Wildlife

PB = Protected Bird

GN = Game (No Season)

GS = Game (Season Set)

SR = Special Regulations

C = Complex

CA1 = CITES Appendix 1

CA2 = CITES Appendix 2

CA3 = CITES Appendix 3

\* = Non-native

## BIRDS (cont.)

<u>COMMON NAME</u>	<u>SCIENTIFIC NAME</u>	<u>LEGAL STATUS</u>	
		<u>FEDERAL</u>	<u>STATE</u>
<b>Pipits</b>			
American Pipit	<i>Anthus rubescens</i>	MBTA	PB
<b>Finches and Crossbills</b>			
Evening Grosbeak	<i>Coccothraustes vespertinus</i>	MBTA	PB
Pine Grosbeak	<i>Pinicola enucleator</i>	MBTA	PB
House Finch	<i>Haemorhous mexicanus</i>	MBTA	PB
Purple Finch	<i>Haemorhous purpureus</i>	MBTA	PB
Common Redpoll	<i>Acanthis flammea</i>	MBTA	PB
Red Crossbill	<i>Loxia curvirostra</i>	MBTA	PB
White-winged Crossbill	<i>Loxia leucoptera</i>	MBTA	PB
Pine Siskin	<i>Spinus pinus</i>	MBTA	PB
American Goldfinch	<i>Spinus tristis</i>	MBTA	PB
<b>Longspurs and Snow Buntings</b>			
Lapland Longspur	<i>Calcarius lapponicus</i>	MBTA	PB
Snow Bunting	<i>Plectrophenax nivalis</i>	MBTA	PB
<b>Sparrows</b>			
Eastern Towhee	<i>Pipilo erythrophthalmus</i>	MBTA	PB
American Tree Sparrow	<i>Spizelloides arborea</i>	MBTA	PB
Chipping Sparrow	<i>Spizella passerina</i>	MBTA	PB
Clay-colored Sparrow	<i>Spizella pallida</i>	MBTA	PB
Field Sparrow	<i>Spizella pusilla</i>	MBTA	PB
Vesper Sparrow	<i>Pooecetes gramineus</i>	MBTA	PB-SC
Lark Sparrow	<i>Chondestes grammacus</i>	MBTA	PB
Savannah Sparrow	<i>Passerculus sandwichensis</i>	MBTA	PB
Grasshopper Sparrow	<i>Ammodramus savannarum</i>	MBTA	PB-SC
Henslow's Sparrow	<i>Centronix henslowii</i>	MBTA	PB-T
Seaside Sparrow	<i>Ammospiza maritimus</i>	MBTA	PB-SC
Nelson's Sparrow	<i>Ammospiza nelsoni</i>	MBTA	PB
Saltmarsh Sparrow	<i>Ammospiza caudacuta</i>	MBTA	PB
Fox Sparrow	<i>Passerella iliaca</i>	MBTA	PB
Song Sparrow	<i>Melospiza melodia</i>	MBTA	PB
Lincoln's Sparrow	<i>Melospiza lincolni</i>	MBTA	PB
Swamp Sparrow	<i>Melospiza georgiana</i>	MBTA	PB
White-throated Sparrow	<i>Zonotrichia albicollis</i>	MBTA	PB
White-crowned Sparrow	<i>Zonotrichia leucophrys</i>	MBTA	PB
Dark-eyed Junco	<i>Junco hyemalis</i>	MBTA	PB

E = Endangered  
T = Threatened  
SC = Special Concern  
Un = Unprotected

MBTA = Migratory Bird Treaty Act  
MMPA = Marine Mammal Protection Act  
P = Protected Wildlife  
PB = Protected Bird

GN = Game (No Season)  
GS = Game (Season Set)  
SR = Special Regulations  
C = Complex

CA1 = CITES Appendix 1  
CA2 = CITES Appendix 2  
CA3 = CITES Appendix 3  
\* = Non-native

## BIRDS (cont.)

<u>COMMON NAME</u>	<u>SCIENTIFIC NAME</u>	<u>LEGAL STATUS</u>	
		<u>FEDERAL</u>	<u>STATE</u>
<b>Yellow-breasted Chats</b>			
Yellow-breasted Chat	<i>Icteria virens</i>	MBTA	PB-SC
<b>Blackbirds, Meadowlarks, and Orioles</b>			
Bobolink	<i>Dolichonyx oryzivorus</i>	MBTA	PB
Eastern Meadowlark	<i>Sturnella magna</i>	MBTA	PB
Western Meadowlark	<i>Sturnella neglecta</i>	MBTA	PB
Orchard Oriole	<i>Icterus spurius</i>	MBTA	PB
Baltimore Oriole	<i>Icterus galbula</i>	MBTA	PB
Red-winged Blackbird	<i>Agelaius phoeniceus</i>	MBTA	PB
Brown-headed Cowbird	<i>Molothrus ater</i>	MBTA	PB
Rusty Blackbird	<i>Euphagus carolinus</i>	MBTA	PB
Brewer's Blackbird	<i>Euphagus cyanocephalus</i>	MBTA	PB
Common Grackle	<i>Quiscalus quiscula</i>	MBTA	PB
Boat-tailed Grackle	<i>Quiscalus major</i>	MBTA	PB
<b>Wood-Warblers</b>			
Ovenbird	<i>Seiurus aurocapilla</i>	MBTA	PB
Worm-eating Warbler	<i>Helmitheros vermivorum</i>	MBTA	PB
Louisiana Waterthrush	<i>Parkesia motacilla</i>	MBTA	PB
Northern Waterthrush	<i>Parkesia noveboracensis</i>	MBTA	PB
Golden-winged Warbler	<i>Vermivora chrysoptera</i>	MBTA	PB-SC
Blue-winged Warbler	<i>Vermivora cyanoptera</i>	MBTA	PB
Black-and-white Warbler	<i>Mniotilta varia</i>	MBTA	PB
Prothonotary Warbler	<i>Protonotaria citrea</i>	MBTA	PB
Tennessee Warbler	<i>Oreothlypis peregrina</i>	MBTA	PB
Orange-crowned Warbler	<i>Oreothlypis celata</i>	MBTA	PB
Nashville Warbler	<i>Oreothlypis ruficapilla</i>	MBTA	PB
Connecticut Warbler	<i>Oporornis agilis</i>	MBTA	PB
Mourning Warbler	<i>Geothlypis philadelphia</i>	MBTA	PB
Kentucky Warbler	<i>Geothlypis formosus</i>	MBTA	PB
Common Yellowthroat	<i>Geothlypis trichas</i>	MBTA	PB
Hooded Warbler	<i>Setophaga citrina</i>	MBTA	PB
American Redstart	<i>Setophaga ruticilla</i>	MBTA	PB
Cape May Warbler	<i>Setophaga tigrina</i>	MBTA	PB
Cerulean Warbler	<i>Setophaga cerulea</i>	MBTA	PB-SC
Northern Parula	<i>Setophaga americana</i>	MBTA	PB
Magnolia Warbler	<i>Setophaga magnolia</i>	MBTA	PB
Bay-breasted Warbler	<i>Setophaga castanea</i>	MBTA	PB
Blackburnian Warbler	<i>Setophaga fusca</i>	MBTA	PB

E = Endangered  
T = Threatened  
SC = Special Concern  
Un = Unprotected

MBTA = Migratory Bird Treaty Act  
MMPA = Marine Mammal Protection Act  
P = Protected Wildlife  
PB = Protected Bird

GN = Game (No Season)  
GS = Game (Season Set)  
SR = Special Regulations  
C = Complex

CA1 = CITES Appendix 1  
CA2 = CITES Appendix 2  
CA3 = CITES Appendix 3  
\* = Non-native

## BIRDS (cont.)

<u>COMMON NAME</u>	<u>SCIENTIFIC NAME</u>	<u>LEGAL STATUS</u>	
		<u>FEDERAL</u>	<u>STATE</u>
Yellow Warbler	<i>Setophaga petechia</i>	MBTA	PB
Chestnut-sided Warbler	<i>Setophaga pensylvanica</i>	MBTA	PB
Blackpoll Warbler	<i>Setophaga striata</i>	MBTA	PB
Black-throated Blue Warbler	<i>Setophaga caerulescens</i>	MBTA	PB
Palm Warbler	<i>Setophaga palmarum</i>	MBTA	PB
Pine Warbler	<i>Setophaga pinus</i>	MBTA	PB
Yellow-rumped Warbler	<i>Setophaga coronata</i>	MBTA	PB
Yellow-throated Warbler	<i>Setophaga dominica</i>	MBTA	PB
Prairie Warbler	<i>Setophaga discolor</i>	MBTA	PB
Black-throated Green Warbler	<i>Setophaga virens</i>	MBTA	PB
Canada Warbler	<i>Cardellina canadensis</i>	MBTA	PB
Wilson's Warbler	<i>Cardellina pusilla</i>	MBTA	PB

### Tanagers, Cardinals, and Allies

Summer Tanager	<i>Piranga rubra</i>	MBTA	PB
Scarlet Tanager	<i>Piranga olivacea</i>	MBTA	PB
Northern Cardinal	<i>Cardinalis cardinalis</i>	MBTA	PB
Rose-breasted Grosbeak	<i>Pheucticus ludovicianus</i>	MBTA	PB
Blue Grosbeak	<i>Passerina caerulea</i>	MBTA	PB
Indigo Bunting	<i>Passerina cyanea</i>	MBTA	PB
Dickcissel	<i>Spiza americana</i>	MBTA	PB

E = Endangered  
 T = Threatened  
 SC = Special Concern  
 Un = Unprotected

MBTA = Migratory Bird Treaty Act  
 MMPA = Marine Mammal Protection Act  
 P = Protected Wildlife  
 PB = Protected Bird

GN = Game (No Season)  
 GS = Game (Season Set)  
 SR = Special Regulations  
 C = Complex

CA1 = CITES Appendix 1  
 CA2 = CITES Appendix 2  
 CA3 = CITES Appendix 3  
 \* = Non-native

## MAMMALS

<u>COMMON NAME</u>	<u>SCIENTIFIC NAME</u>	<u>LEGAL STATUS</u>	
		<u>FEDERAL</u>	<u>STATE</u>
<b>Marsupials</b>			
Virginia Opossum	<i>Didelphis virginiana</i>	Un	GS
<b>Shrews and Moles</b>			
Cinereus Shrew	<i>Sorex cinereus</i>	Un	Un
American Water Shrew	<i>Sorex palustris</i>	Un	Un
Smoky Shrew	<i>Sorex fumeus</i>	Un	Un
Long-tailed Shrew	<i>Sorex dispar</i>	Un	Un
American Pygmy Shrew	<i>Sorex hoyi</i>	Un	Un
Northern Short-tailed Shrew	<i>Blarina brevicauda</i>	Un	Un
North American Least Shrew	<i>Cryptotis parva</i>	Un	Un
Hairy-tailed Mole	<i>Parascalops breweri</i>	Un	Un
Eastern Mole	<i>Scalopus aquaticus</i>	Un	Un
Star-nosed Mole	<i>Condylura cristata</i>	Un	Un
<b>Bats</b>			
Little Brown Myotis	<i>Myotis lucifugus</i>	Un	Un
Northern Myotis	<i>Myotis septentrionalis</i>	T	T
Indiana Myotis	<i>Myotis sodalis</i>	E	E
Eastern Small-footed Myotis	<i>Myotis leibii</i>	Un	P-SC
Silver-haired Bat	<i>Lasionycteris noctivagans</i>	Un	Un
Eastern Pipistrelle	<i>Pipistrellus subflavus</i>	Un	Un
Big Brown Bat	<i>Eptesicus fuscus</i>	Un	Un
Eastern Red Bat	<i>Lasiurus borealis</i>	Un	Un
Hoary Bat	<i>Lasiurus cinereus</i>	Un	Un
<b>Canids</b>			
Coyote	<i>Canis latrans</i>	Un	GS
Red Fox	<i>Vulpes vulpes</i>	Un	GS
Gray Fox	<i>Urocyon cinereoargenteus</i>	Un	GS
<b>Bear</b>			
American Black Bear	<i>Ursus americanus</i>	Un-CA2	GS
<b>Skunk</b>			
Striped Skunk	<i>Mephitis mephitis</i>	Un	GS

E = Endangered  
T = Threatened  
SC = Special Concern  
Un = Unprotected

MBTA = Migratory Bird Treaty Act  
MMPA = Marine Mammal Protection Act  
P = Protected Wildlife  
PB = Protected Bird

GN = Game (No Season)  
GS = Game (Season Set)  
SR = Special Regulations  
C = Complex

CA1 = CITES Appendix 1  
CA2 = CITES Appendix 2  
CA3 = CITES Appendix 3  
\* = Non-native

## MAMMALS (cont.)

<u>COMMON NAME</u>	<u>SCIENTIFIC NAME</u>	<u>LEGAL STATUS</u>	
		<u>FEDERAL</u>	<u>STATE</u>
<b>Raccoon</b>			
Raccoon	<i>Procyon lotor</i>	Un	GS
<b>Mustelids</b>			
American Marten	<i>Martes americana</i>	Un	GS
Fisher	<i>Pekania pennanti</i>	Un	GS
Ermine	<i>Mustela erminea</i>	Un	GS
Long-tailed Weasel	<i>Mustela frenata</i>	Un	GS
American Mink	<i>Neovison vison</i>	Un	GS
North American River Otter	<i>Lontra canadensis</i>	Un-CA2	GS
<b>Felids</b>			
Bobcat	<i>Lynx rufus</i>	Un-CA2	GS
<b>Marine Mammals</b>			
Harbor Seal	<i>Phoca vitulina</i>	MMPA	SR
Harp Seal	<i>Pagophilus groenlandicus</i>	MMPA	Un
Gray Seal	<i>Halichoerus grypus</i>	MMPA	Un
Hooded Seal	<i>Cystophora cristata</i>	MMPA	Un
Short-beaked Common Dolphin	<i>Delphinus delphis</i>	MMPA-CA2	Un
Bottlenose Dolphin	<i>Tursiops truncatus</i>	MMPA-CA2	Un
Atlantic White-sided Dolphin	<i>Lagenorhynchus acutus</i>	MMPA-CA2	Un
Harbor Porpoise	<i>Phocoena phocoena</i>	MMPA-CA2	P-SC
Fin Whale	<i>Balaenoptera physalus</i>	MMPA-E-CA1	E
Sei Whale	<i>Balaenoptera borealis</i>	MMPA-E-CA1	E
Common Minke Whale	<i>Balaenoptera acutorostrata</i>	MMPA-CA1	Un
Humpback Whale (West Indies Distinct Population Segment)	<i>Megaptera novaeangliae</i>	MMPA-CA1	E
North Atlantic Right Whale	<i>Eubalaena glacialis</i>	MMPA-E-CA1	E

E = Endangered  
T = Threatened  
SC = Special Concern  
Un = Unprotected

MBTA = Migratory Bird Treaty Act  
MMPA = Marine Mammal Protection Act  
P = Protected Wildlife  
PB = Protected Bird

GN = Game (No Season)  
GS = Game (Season Set)  
SR = Special Regulations  
C = Complex

CA1 = CITES Appendix 1  
CA2 = CITES Appendix 2  
CA3 = CITES Appendix 3  
\* = Non-native



## MAMMALS (cont.)

<u>COMMON NAME</u>	<u>SCIENTIFIC NAME</u>	<u>LEGAL STATUS</u>	
		<u>FEDERAL</u>	<u>STATE</u>
<b>Ungulates</b>			
White-tailed Deer	<i>Odocoileus virginianus</i>	Un	GS
Moose	<i>Alces americanus</i>	Un	GN
<b>Rodents</b>			
Eastern Chipmunk	<i>Tamias striatus</i>	Un	Un
Woodchuck	<i>Marmota monax</i>	Un	Un
Eastern Gray Squirrel	<i>Sciurus carolinensis</i>	Un	GS
Eastern Fox Squirrel	<i>Sciurus niger</i>	Un	GS
Red Squirrel	<i>Tamiasciurus hudsonicus</i>	Un	Un
Southern Flying Squirrel	<i>Glaucomys volans</i>	Un	Un
Northern Flying Squirrel	<i>Glaucomys sabrinus</i>	Un	Un
American Beaver	<i>Castor canadensis</i>	Un	GS
North American Deermouse	<i>Peromyscus maniculatus</i>	Un	Un
White-footed Deermouse	<i>Peromyscus leucopus</i>	Un	Un
Allegheny Woodrat	<i>Neotoma magister</i>	Un	E
Southern Red-backed Vole	<i>Myodes gapperi</i>	Un	Un
Meadow Vole	<i>Microtus pennsylvanicus</i>	Un	Un
Rock Vole	<i>Microtus chrotorrhinus</i>	Un	Un
Woodland Vole	<i>Microtus pinetorum</i>	Un	Un
Common Muskrat	<i>Ondatra zibethicus</i>	Un	GS
Southern Bog Lemming	<i>Synaptomys cooperi</i>	Un	Un
Roof Rat*	<i>Rattus rattus</i>	Un	Un
Brown Rat*	<i>Rattus norvegicus</i>	Un	Un
House Mouse*	<i>Mus musculus</i>	Un	Un
Meadow Jumping Mouse	<i>Zapus hudsonius</i>	Un	Un
Woodland Jumping Mouse	<i>Napaeozapus insignis</i>	Un	Un
North American Porcupine	<i>Erethizon dorsata</i>	Un	Un
<b>Rabbits and Hares</b>			
Eastern Cottontail	<i>Sylvilagus floridanus</i>	Un	GS
New England Cottontail	<i>Sylvilagus transitionalis</i>	Un	P-SC
Snowshoe Hare	<i>Lepus americanus</i>	Un	GS

E = Endangered  
T = Threatened  
SC = Special Concern  
Un = Unprotected

MBTA = Migratory Bird Treaty Act  
MMPA = Marine Mammal Protection Act  
P = Protected Wildlife  
PB = Protected Bird

GN = Game (No Season)  
GS = Game (Season Set)  
SR = Special Regulations  
C = Complex

CA1 = CITES Appendix 1  
CA2 = CITES Appendix 2  
CA3 = CITES Appendix 3  
\* = Non-native

## RARELY ENCOUNTERED SPECIES

<u>COMMON NAME</u>	<u>SCIENTIFIC NAME</u>	<u>LEGAL STATUS</u>	
		<u>FEDERAL</u>	<u>STATE</u>
<b>Birds</b>			
Black-bellied Whistling-Duck	<i>Dendrocygna autumnalis</i>	MBTA-CA3	PB-GS
Fulvous Whistling-Duck	<i>Dendrocygna bicolor</i>	MBTA-CA3	PB-GS
Ross's Goose	<i>Anser rossii</i>	MBTA	PB-GS
Greater White-fronted Goose	<i>Anser albifrons</i>	MBTA	PB-GS
Pink-footed Goose	<i>Anser brachyrhynchus</i>	MBTA	PB-GS
Barnacle Goose	<i>Branta leucopsis</i>	MBTA	PB-GS
Cackling Goose	<i>Branta hutchinsii</i>	MBTA	PB-GS
Garganey	<i>Spatula querquedula</i>	MBTA	PB-GS
Cinnamon Teal	<i>Spatula cyanoptera</i>	MBTA	PB-GS
Tufted Duck	<i>Aythya fuligula</i>	MBTA	PB-GS
Smew	<i>Mergellus albellus</i>	MBTA	PB
Willow Ptarmigan	<i>Lagopus lagopus</i>	Un	PB-GN
Western Grebe	<i>Aechmophorus occidentalis</i>	MBTA	PB
Clark's Grebe	<i>Aechmophorus clarkia</i>	MBTA	PB
Band-tailed Pigeon	<i>Patagioenas fasciata</i>	MBTA	PB
Eurasian Collared-Dove	<i>Streptopelia decaocto</i>	MBTA	PB
Common Ground-Dove	<i>Columbina passerine</i>	MBTA	PB
White-winged Dove	<i>Zenaida asiatica</i>	MBTA	PB
Anna's Hummingbird	<i>Calypte anna</i>	MBTA-CA2	PB
Rufous Hummingbird	<i>Selasphorus rufus</i>	MBTA-CA2	PB
Calliope Hummingbird	<i>Selasphorus calliope</i>	MBTA-CA2	PB
Broad-billed Hummingbird	<i>Cynanthus latirostris</i>	MBTA-CA2	PB
Corn Crake	<i>Crex crex</i>	MBTA	PB
Sandhill Crane	<i>Antigone canadensis</i>	MBTA-CA2	PB
Black-necked Stilt	<i>Himantopus mexicanus</i>	MBTA	PB-GN
American Avocet	<i>Recurvirostra americana</i>	MBTA	PB-GN
Northern Lapwing	<i>Vanellus vanellus</i>	MBTA	PB-GN
Pacific Golden-Plover	<i>Pluvialis fulva</i>	MBTA	PB-GN
Wilson's Plover	<i>Charadrius wilsonia</i>	MBTA	PB-GN
Common Ringed Plover	<i>Charadrius hiaticula</i>	MBTA	PB-GN
Long-billed Curlew	<i>Numenius americanus</i>	MBTA	PB-GN
Bar-tailed Godwit	<i>Limosa lapponica</i>	MBTA	PB-GN
Black-tailed Godwit	<i>Limosa limosa</i>	MBTA	PB-GN
Broad-billed Sandpiper	<i>Calidris falcinellus</i>	MBTA	PB-GN
Sharp-tailed Sandpiper	<i>Calidris acuminata</i>	MBTA	PB-GN
Curlew Sandpiper	<i>Calidris ferruginea</i>	MBTA	PB-GN
Red-necked Stint	<i>Calidris ruficollis</i>	MBTA	PB-GN
Little Stint	<i>Calidris minuta</i>	MBTA	PB-GN

E = Endangered  
T = Threatened  
SC = Special Concern  
Un = Unprotected

MBTA = Migratory Bird Treaty Act  
MMPA = Marine Mammal Protection Act  
P = Protected Wildlife  
PB = Protected Bird

GN = Game (No Season)  
GS = Game (Season Set)  
SR = Special Regulations  
C = Complex

CA1 = CITES Appendix 1  
CA2 = CITES Appendix 2  
CA3 = CITES Appendix 3  
\* = Non-native

## RARELY ENCOUNTERED SPECIES

<u>COMMON NAME</u>	<u>SCIENTIFIC NAME</u>	<u>LEGAL STATUS</u>	
		<u>FEDERAL</u>	<u>STATE</u>
Spotted Redshank	<i>Tringa erythropus</i>	MBTA	PB-GN
Wood Sandpiper	<i>Tringa glareola</i>	MBTA	PB-GN
Great Skua	<i>Stercorarius skua</i>	MBTA	PB
South Polar Skua	<i>Stercorarius maccormicki</i>	MBTA	PB
Long-tailed Jaeger	<i>Stercorarius longicaudus</i>	MBTA	PB
Common Murre	<i>Uria aalge</i>	MBTA	PB
Thick-billed Murre	<i>Uria lomvia</i>	MBTA	PB
Black Guillemot	<i>Cephus grylle</i>	MBTA	PB
Long-billed Murrelet	<i>Brachyramphus perdix</i>	MBTA	PB
Ancient Murrelet	<i>Synthliboramphus antiquus</i>	MBTA	PB
Atlantic Puffin	<i>Fratercula arctica</i>	MBTA	PB
Ivory Gull	<i>Pagophila eburnea</i>	MBTA	PB
Sabine's Gull	<i>Xema sabini</i>	MBTA	PB
Gray-hooded Gull	<i>Chroicocephalus cirrocephalus</i>	MBTA	PB
Ross's Gull	<i>Rhodostethia rosea</i>	MBTA	PB
Black-tailed Gull	<i>Larus crassirostris</i>	MBTA	PB
Mew Gull	<i>Larus canus</i>	MBTA	PB
Western Gull	<i>Larus occidentalis</i>	MBTA	PB
California Gull	<i>Larus californicus</i>	MBTA	PB
Slaty-backed Gull	<i>Larus schistisagus</i>	MBTA	PB
Sooty Tern	<i>Onychoprion fuscatus</i>	MBTA	PB
Bridled Tern	<i>Onychoprion anaethetus</i>	MBTA	PB
White-winged Tern	<i>Chlidonias leucopterus</i>	MBTA	PB
Arctic Tern	<i>Sterna paradisaea</i>	MBTA	PB
Elegant Tern	<i>Thalasseus elegans</i>	MBTA	PB
White-tailed Tropicbird	<i>Phaethon lepturus</i>	MBTA	PB
Red-billed Tropicbird	<i>Phaethon aethereus</i>	MBTA	PB
Pacific Loon	<i>Gavia pacifica</i>	MBTA	PB
Yellow-billed Loon	<i>Gavia adamsii</i>	MBTA	PB
Yellow-nosed Albatross	<i>Thalassarche chlororhynchos</i>	MBTA	PB
White-faced Storm-Petrel	<i>Pelagodroma marina</i>	MBTA	PB
Leach's Storm-Petrel	<i>Oceanodroma leucorhoa</i>	MBTA	PB
Band-rumped Storm-Petrel	<i>Oceanodroma castro</i>	MBTA-E	PB
Trindade Petrel	<i>Pterodroma arminjoniana</i>	MBTA	PB
Mottled Petrel	<i>Pterodroma inexpectata</i>	MBTA	PB
Black-capped Petrel	<i>Pterodroma hasitata</i>	MBTA	PB
Fea's Petrel	<i>Pterodroma feae</i>	MBTA	PB
Wood Stork	<i>Mycteria americana</i>	MBTA-T	PB
Magnificent Frigatebird	<i>Fregata magnificens</i>	MBTA	PB
Brown Booby	<i>Sula leucogaster</i>	MBTA	PB

E = Endangered  
T = Threatened  
SC = Special Concern  
Un = Unprotected

MBTA = Migratory Bird Treaty Act  
MMPA = Marine Mammal Protection Act  
P = Protected Wildlife  
PB = Protected Bird

GN = Game (No Season)  
GS = Game (Season Set)  
SR = Special Regulations  
C = Complex

CA1 = CITES Appendix 1  
CA2 = CITES Appendix 2  
CA3 = CITES Appendix 3  
\* = Non-native

## RARELY ENCOUNTERED SPECIES

<u>COMMON NAME</u>	<u>SCIENTIFIC NAME</u>	<u>LEGAL STATUS</u>	
		<u>FEDERAL</u>	<u>STATE</u>
Audubon's Shearwater	<i>Puffinus lherminieri</i>	MBTA	PB
Neotropic Cormorant	<i>Phalacrocorax brasilianus</i>	MBTA	PB
Great Cormorant	<i>Phalacrocorax carbo</i>	MBTA	PB
Anhinga	<i>Anhinga anhinga</i>	MBTA	PB
Little Egret	<i>Egretta garzetta</i>	MBTA	PB
Western Reef-Heron	<i>Egretta gularis</i>	MBTA	PB
Reddish Egret	<i>Egretta rufescens</i>	MBTA	PB
White Ibis	<i>Eudocimus albus</i>	MBTA	PB
White-faced Ibis	<i>Plegadis chihi</i>	MBTA	PB
Roseate Spoonbill	<i>Platalea ajaja</i>	MBTA	PB
White-tailed Kite	<i>Elanus leucurus</i>	MBTA	PB
Swallow-tailed Kite	<i>Elanoides forficatus</i>	MBTA	PB
Mississippi Kite	<i>Ictinia mississippiensis</i>	MBTA	PB
Swainson's Hawk	<i>Buteo swainsoni</i>	MBTA-CA2	PB
Northern Hawk Owl	<i>Surnia ulula</i>	MBTA-CA2	PB
Burrowing Owl	<i>Athene cunicularia</i>	MBTA-CA2	PB
Great Gray Owl	<i>Strix nebulosa</i>	MBTA-CA2	PB
Boreal Owl	<i>Aegolius funereus</i>	MBTA-CA2	PB
Lewis's Woodpecker	<i>Melanerpes lewis</i>	MBTA	PB
Williamson's Sapsucker	<i>Sphyrapicus thyroideus</i>	MBTA	PB
Crested Caracara	<i>Caracara cheriway</i>	MBTA	PB
Gyr Falcon	<i>Falco rusticolus</i>	MBTA-CA1	PB
Ash-throated Flycatcher	<i>Myiarchus cinerascens</i>	MBTA	PB
Couch's Kingbird	<i>Tyrannus couchii</i>	MBTA	PB
Cassin's Kingbird	<i>Tyrannus vociferans</i>	MBTA	PB
Gray Kingbird	<i>Tyrannus dominicensis</i>	MBTA	PB
Scissor-tailed Flycatcher	<i>Tyrannus forficatus</i>	MBTA	PB
Fork-tailed Flycatcher	<i>Tyrannus savanna</i>	MBTA	PB
Hammond's Flycatcher	<i>Empidonax hammondii</i>	MBTA	PB
Pacific-slope Flycatcher	<i>Empidonax difficilis</i>	MBTA	PB
Say's Phoebe	<i>Sayornis saya</i>	MBTA	PB
Vermilion Flycatcher	<i>Pyrocephalus rubinus</i>	MBTA	PB
Bell's Vireo	<i>Vireo bellii</i>	MBTA	PB
Cassin's Vireo	<i>Vireo cassinii</i>	MBTA	PB
Black-billed Magpie	<i>Pica hudsonia</i>	MBTA	PB-GN
Cave Swallow	<i>Petrochelidon fulva</i>	MBTA	PB
Rock Wren	<i>Salpinctes obsoletus</i>	MBTA	PB
Northern Wheatear	<i>Oenanthe oenanthe</i>	MBTA	PB
Mountain Bluebird	<i>Sialia currucoides</i>	MBTA	PB
Townsend's Solitaire	<i>Myadestes townsendi</i>	MBTA	PB

E = Endangered  
T = Threatened  
SC = Special Concern  
Un = Unprotected

MBTA = Migratory Bird Treaty Act  
MMPA = Marine Mammal Protection Act  
P = Protected Wildlife  
PB = Protected Bird

GN = Game (No Season)  
GS = Game (Season Set)  
SR = Special Regulations  
C = Complex

CA1 = CITES Appendix 1  
CA2 = CITES Appendix 2  
CA3 = CITES Appendix 3  
\* = Non-native

## RARELY ENCOUNTERED SPECIES (cont.)

<u>COMMON NAME</u>	<u>SCIENTIFIC NAME</u>	<u>LEGAL STATUS</u>	
		<u>FEDERAL</u>	<u>STATE</u>
Varied Thrush	<i>Ixoreus naevius</i>	MBTA	PB
Brambling	<i>Fringilla montifringilla</i>	MBTA	PB
Gray-crowned Rosy-Finch	<i>Leucosticte tephrocotis</i>	MBTA	PB
Hoary Redpoll	<i>Acanthis hornemanni</i>	MBTA	PB
Chestnut-collared Longspur	<i>Calcarius ornatus</i>	MBTA	PB
Smith's Longspur	<i>Calcarius pictus</i>	MBTA	PB
Green-tailed Towhee	<i>Pipilo chlorurus</i>	MBTA	PB
Spotted Towhee	<i>Pipilo maculate</i>	MBTA	PB
Cassin's Sparrow	<i>Peucaea cassinii</i>	MBTA	PB
Lark Bunting	<i>Calamospiza melanocorys</i>	MBTA	PB
LeConte's Sparrow	<i>Ammospiza leconteii</i>	MBTA	PB
Harris's Sparrow	<i>Zonotrichia querula</i>	MBTA	PB
Golden-crowned Sparrow	<i>Zonotrichia atricapilla</i>	MBTA	PB
Yellow-headed Blackbird	<i>Xanthocephalus xanthocephalus</i>	MBTA	PB
Bronzed Cowbird	<i>Molothrus aeneus</i>	MBTA	PB
Bullock's Oriole	<i>Icterus bullockii</i>	MBTA	PB
Scott's Oriole	<i>Icterus parisorum</i>	MBTA	PB
Swainson's Warbler	<i>Limnithlypis swainsonii</i>	MBTA	PB
MacGillivray's Warbler	<i>Geothlypis tolmiei</i>	MBTA	PB
Kirtland's Warbler	<i>Setophaga kirtlandii</i>	MBTA-E	PB
Grace's Warbler	<i>Setophaga graciae</i>	MBTA	PB
Black-throated Gray Warbler	<i>Setophaga nigrescens</i>	MBTA	PB
Townsend's Warbler	<i>Setophaga townsendi</i>	MBTA	PB
Hermit Warbler	<i>Setophaga occidentalis</i>	MBTA	PB
Western Tanager	<i>Piranga ludoviciana</i>	MBTA	PB
Black-headed Grosbeak	<i>Pheucticus melanocephalus</i>	MBTA	PB
Lazuli Bunting	<i>Passerina amoena</i>	MBTA	PB
Painted Bunting	<i>Passerina ciris</i>	MBTA	PB

### Mammals

Cougar	<i>Puma concolor</i>	Un	E
Wolf	<i>Canis lupus</i>	E-CA2	E
Least Weasel	<i>Mustela nivalis</i>	Un	GS
Canadian Lynx	<i>Lynx canadensis</i>	T-CA2	GN-T
Ringed Seal	<i>Pusa hispida</i>	MMPA	Un
Atlantic Spotted Dolphin	<i>Stenella frontalis</i>	MMPA-CA2	Un
Striped Dolphin	<i>Stenella coeruleoalba</i>	MMPA-CA2	Un
Risso's Dolphin	<i>Grampus griseus</i>	MMPA-CA2	Un
White-beaked Dolphin	<i>Lagenorhynchus albirostris</i>	MMPA-CA2	Un
Blainville's Beaked Whale	<i>Mesoplodon densirostris</i>	MMPA-CA2	Un

E = Endangered  
T = Threatened  
SC = Special Concern  
Un = Unprotected

MBTA = Migratory Bird Treaty Act  
MMPA = Marine Mammal Protection Act  
P = Protected Wildlife  
PB = Protected Bird

GN = Game (No Season)  
GS = Game (Season Set)  
SR = Special Regulations  
C = Complex

CA1 = CITES Appendix 1  
CA2 = CITES Appendix 2  
CA3 = CITES Appendix 3  
\* = Non-native

## RARELY ENCOUNTERED SPECIES (cont.)

<u>COMMON NAME</u>	<u>SCIENTIFIC NAME</u>	<u>LEGAL STATUS</u>	
		<u>FEDERAL</u>	<u>STATE</u>
True's Beaked Whale	<i>Mesoplodon mirus</i>	MMPA-CA2	Un
Cuvier's Beaked Whale	<i>Ziphius cavirostris</i>	MMPA-CA2	Un
Blue Whale	<i>Balaenoptera musculus</i>	MMPA-E-CA1	E
Long-finned Pilot Whale	<i>Globicephala melas</i>	MMPA-CA2	Un
Sperm Whale	<i>Physeter catodon</i>	MMPA-E-CA1	E
Pygmy Sperm Whale	<i>Kogia breviceps</i>	MMPA-CA2	Un

E = Endangered  
T = Threatened  
SC = Special Concern  
Un = Unprotected

MBTA = Migratory Bird Treaty Act  
MMPA = Marine Mammal Protection Act  
P = Protected Wildlife  
PB = Protected Bird

GN = Game (No Season)  
GS = Game (Season Set)  
SR = Special Regulations  
C = Complex

CA1 = CITES Appendix 1  
CA2 = CITES Appendix 2  
CA3 = CITES Appendix 3  
\* = Non-native